



## Womens cargo pants

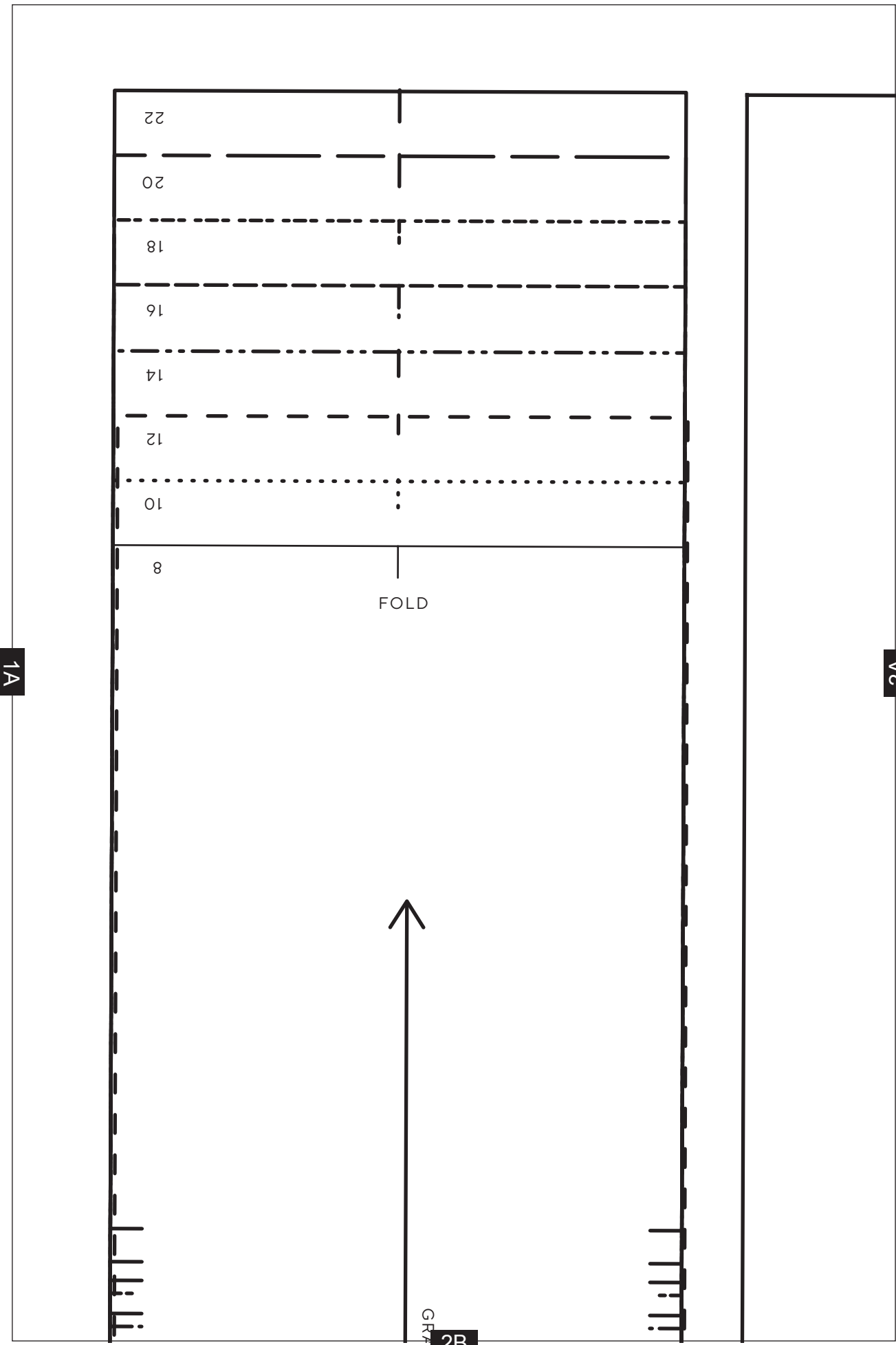
PROJECT DESIGN © LOVE PRODUCTIONS 2024  
THIS DESIGN IS PROTECTED BY COPYRIGHT  
AND MUST NOT BE MADE FOR RESALE.

1.5-CM (5/16-IN.) SEAM ALLOWANCE INCLUDED (UNLESS OTHERWISE STATED)

TEST SQUARE: 10CM x 10CM / 4 INCHES x 4 INCHES

### SIZING KEY

—————	8
.....	10
- - - - -	12
- . - . - .	14
- - - - -	16
- . - . - .	18
- - - - -	20
—————	22



1A

2A

FOLD

GRA

2B

3A

GRAINLINE



# Women's

ZIP GUARD - CUT 1 IN  
+ 1 IN INTERFACING

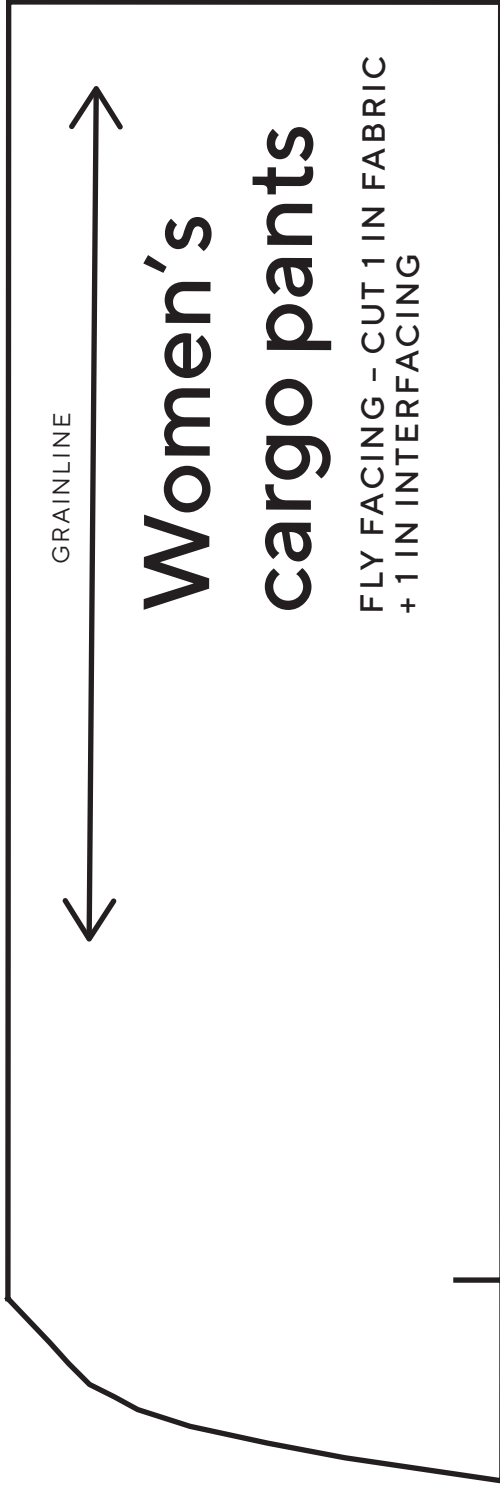
3B

GRAINLINE

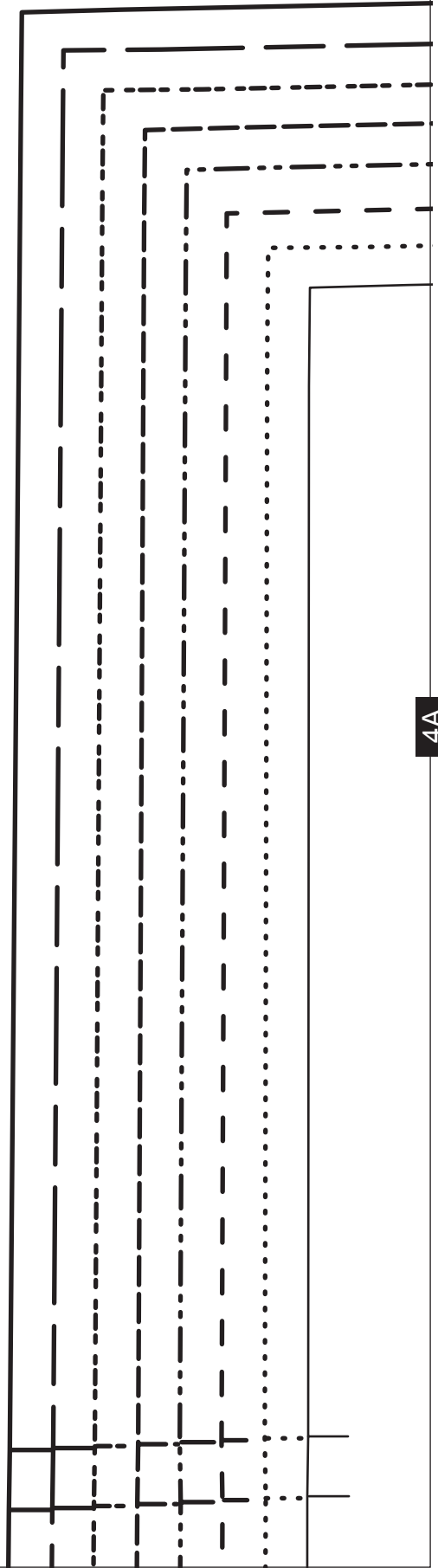


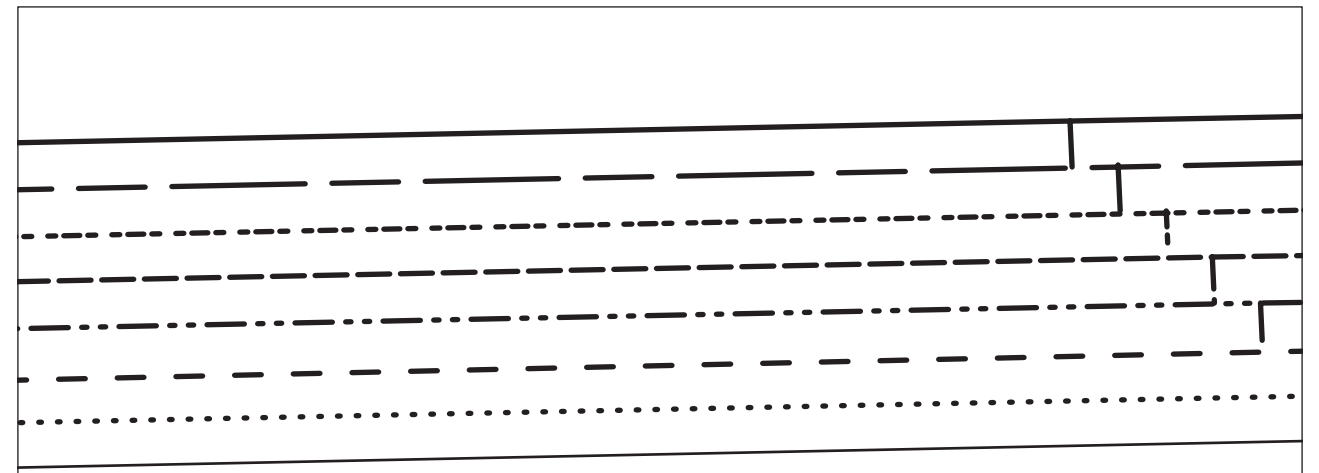
2A

3A



4B





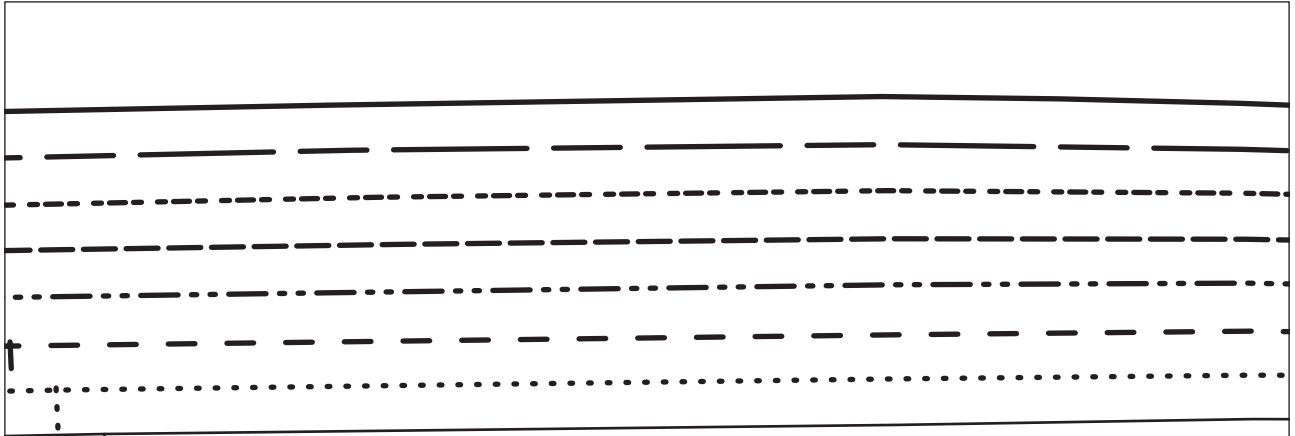
4A

5A

5B

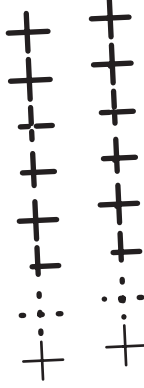
man's cargo pants

5A

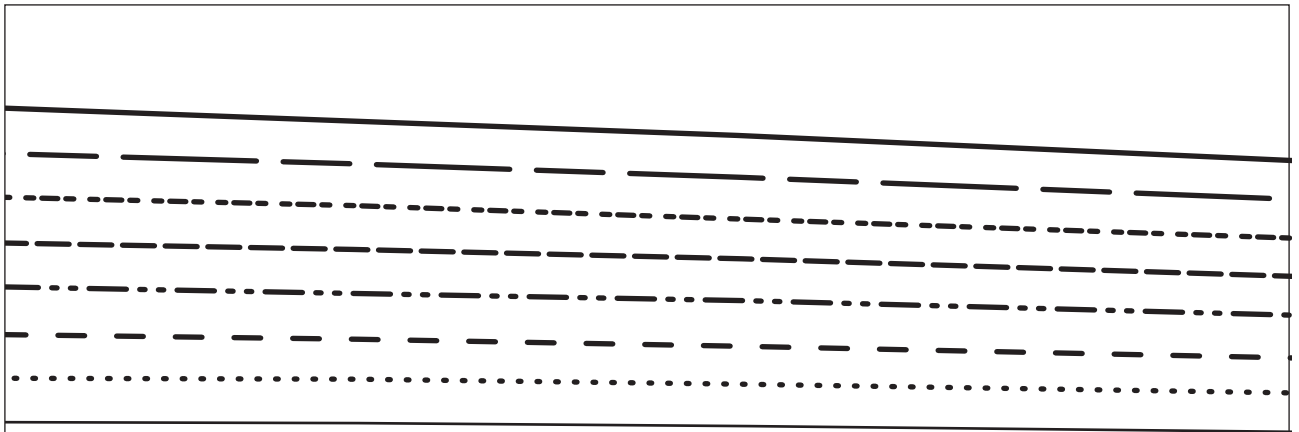


6A

POCKET FLAP  
POCKET POSITION



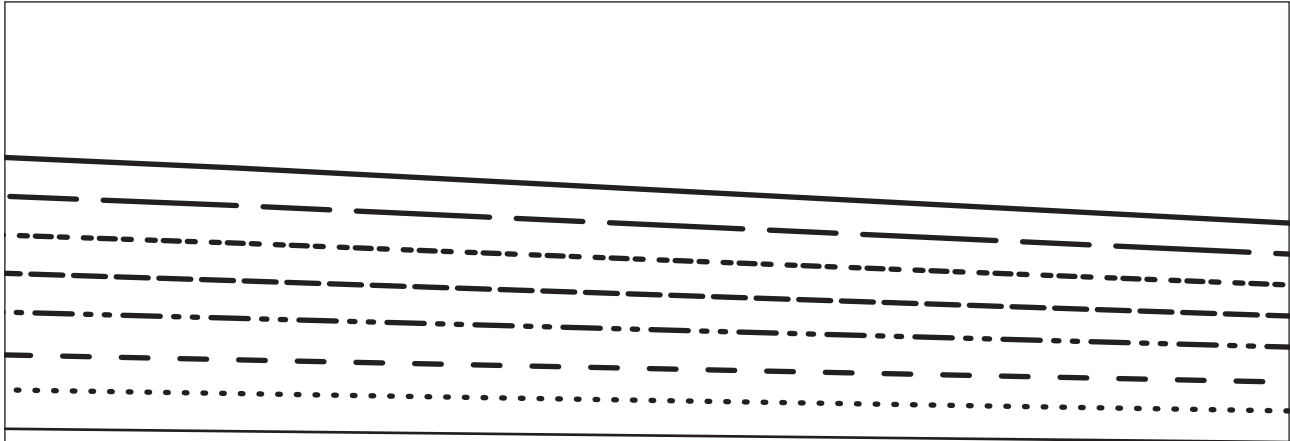
6B



6A

7A

7B

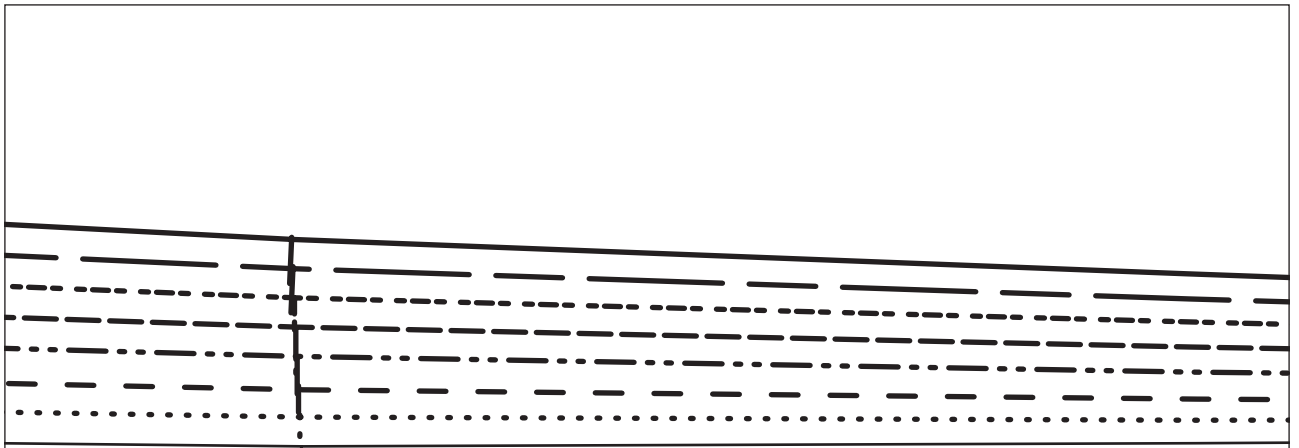


7A

8A

8B FINISH

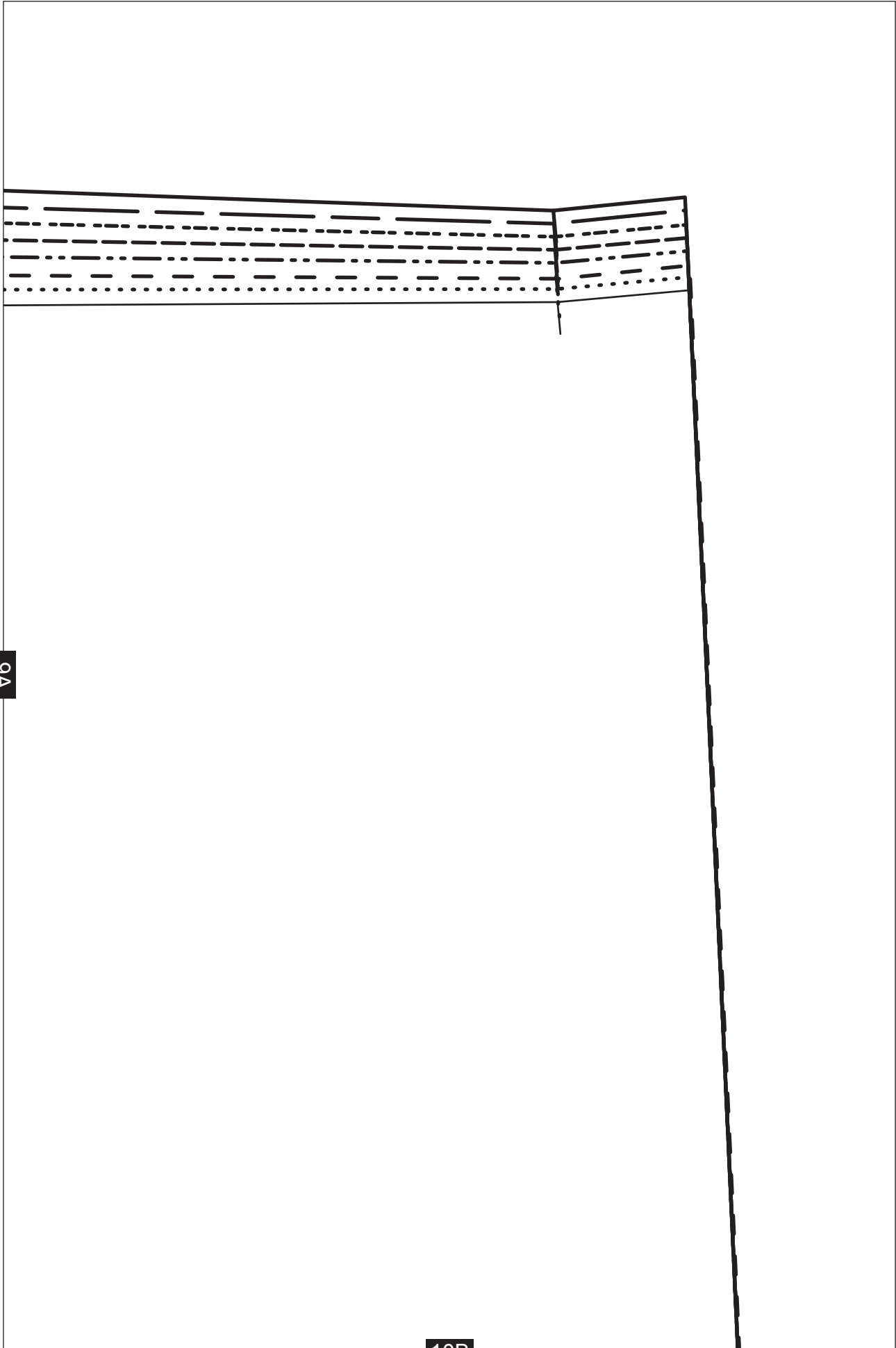




8A

9A

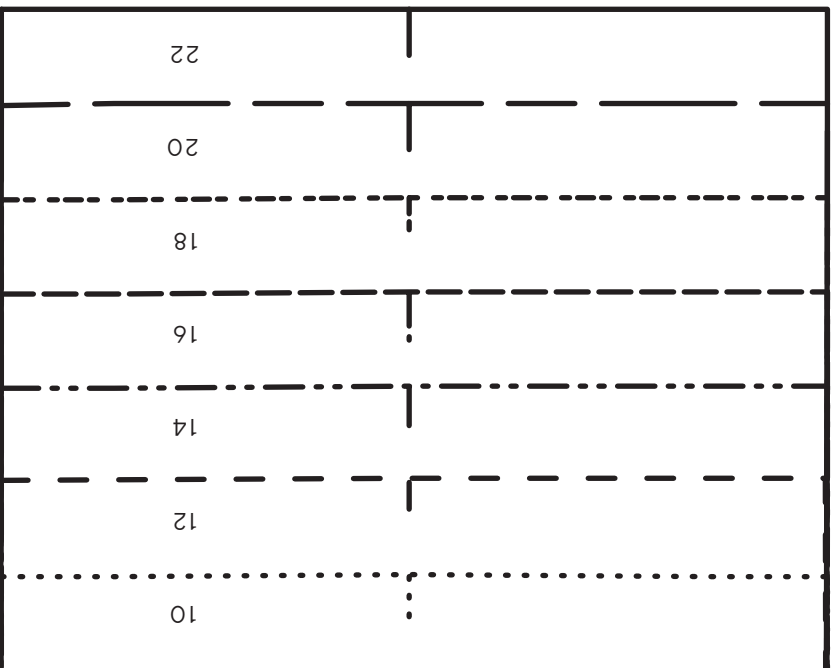
9B



9A

10B

1B



**Women's cargo p**  
 RIGHT FRONT WAISTBAND - CUT 1 IN FA  
 + 1 IN INTERFACING



11B

11A

POCKET SIDE PANEL - CUT 2

121



CENTRE BACK

2B



ONLINE

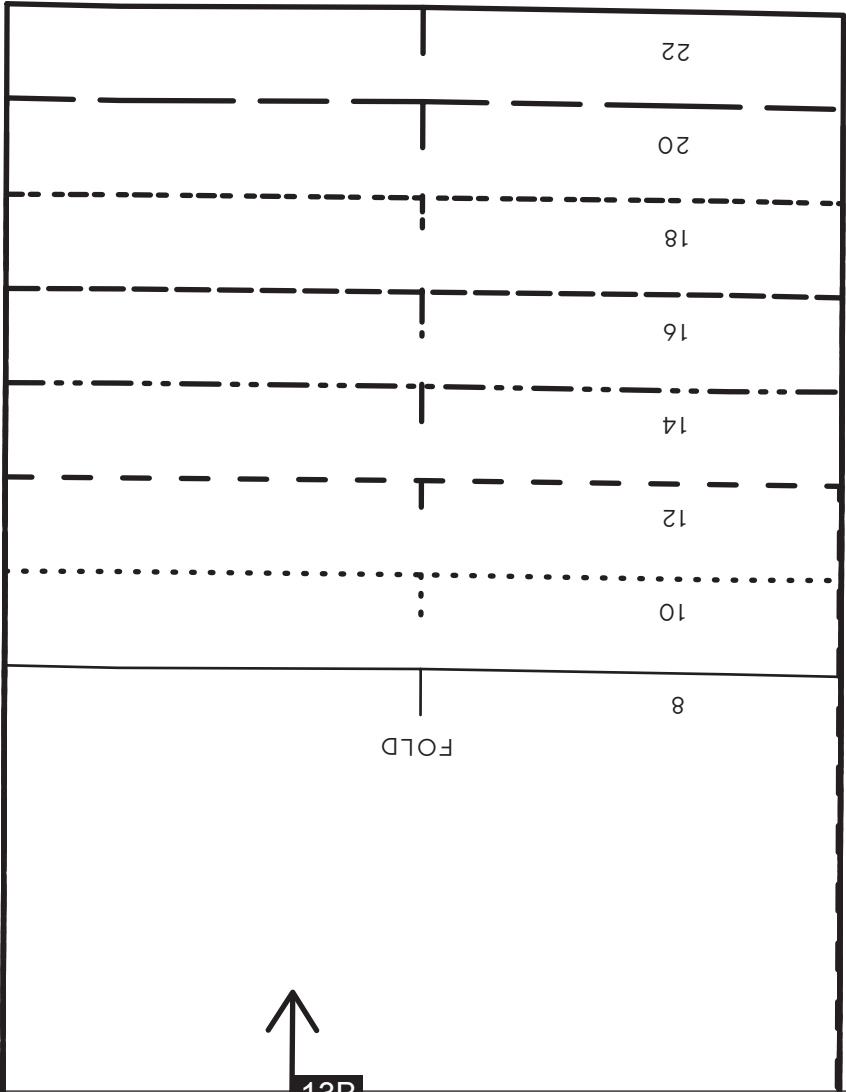
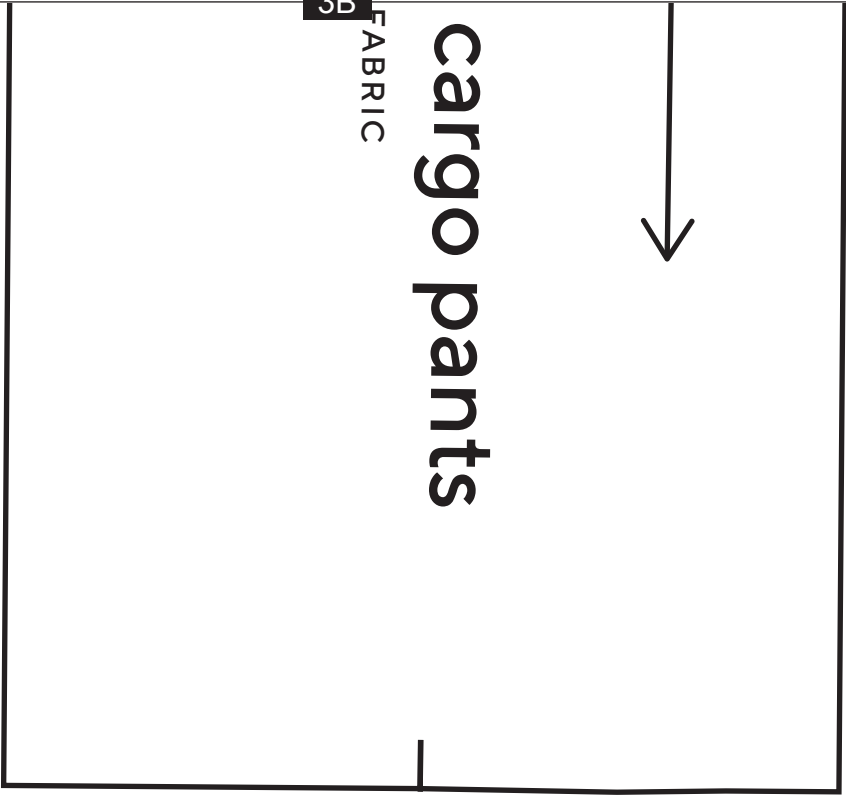
12B

Wom  
BACK WAIST



11A

13A



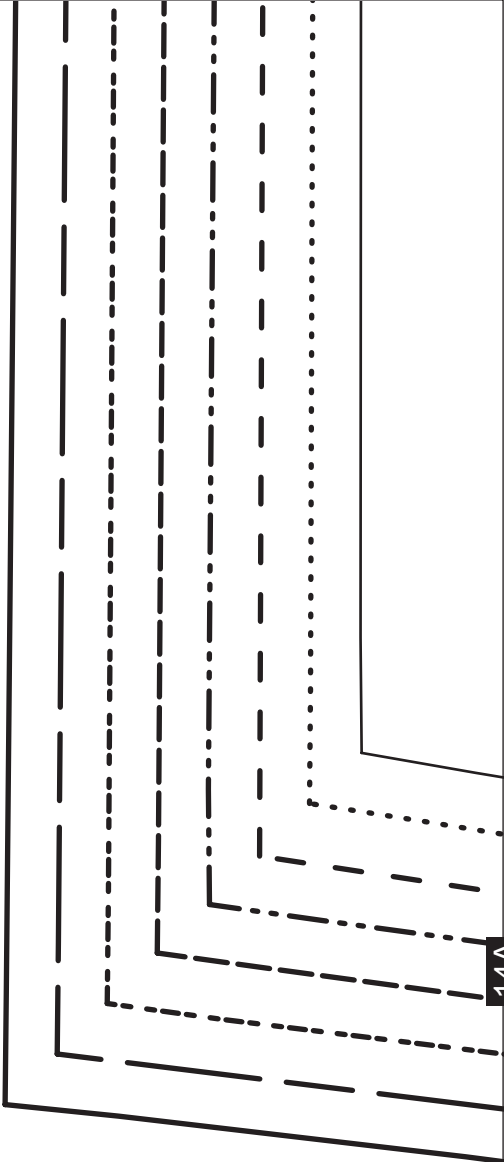
12A Women's cargo pants

4B

13A

14A

14B



# Wome

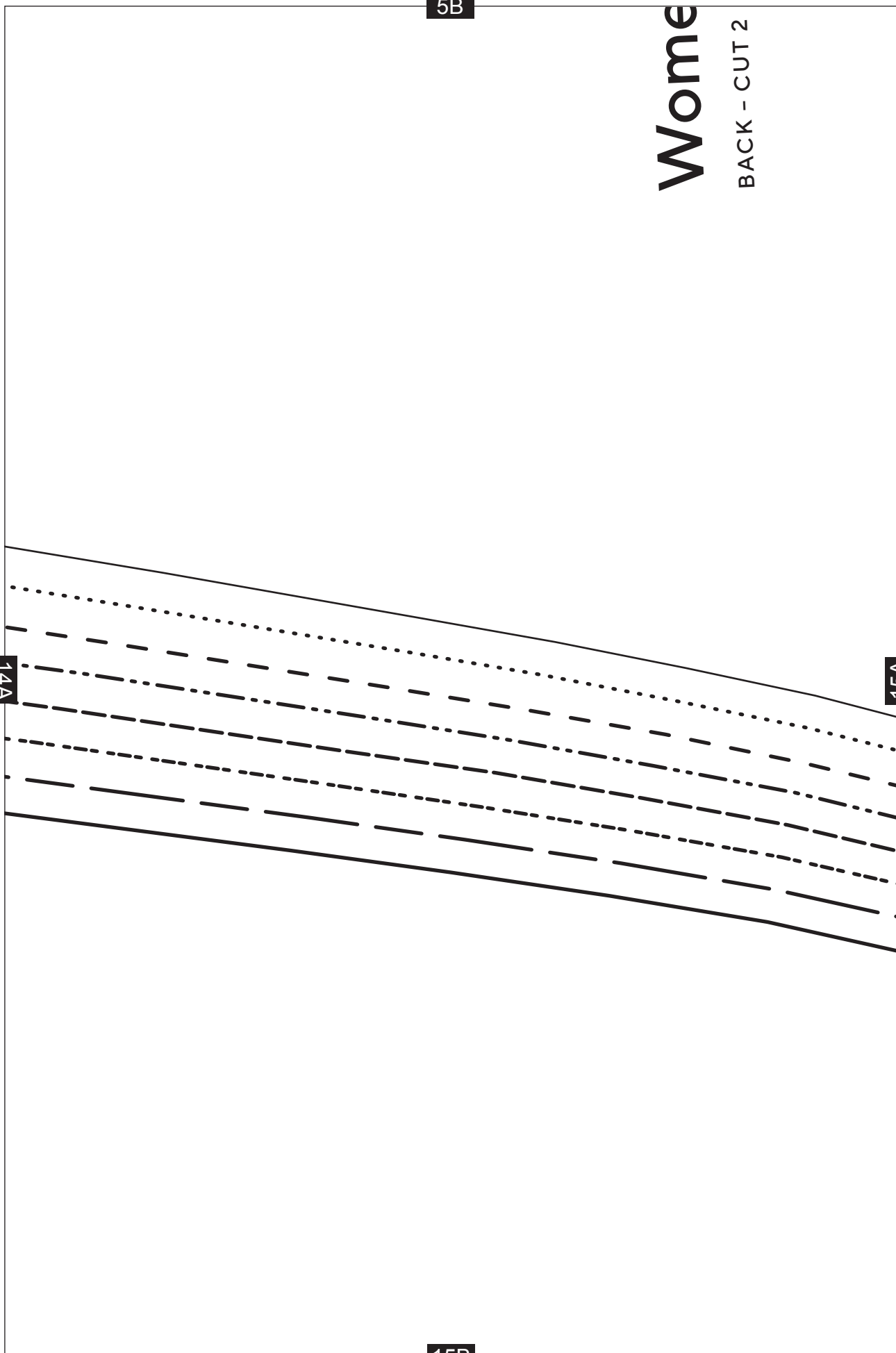
BACK - CUT 2

5B

14A

15A

15B



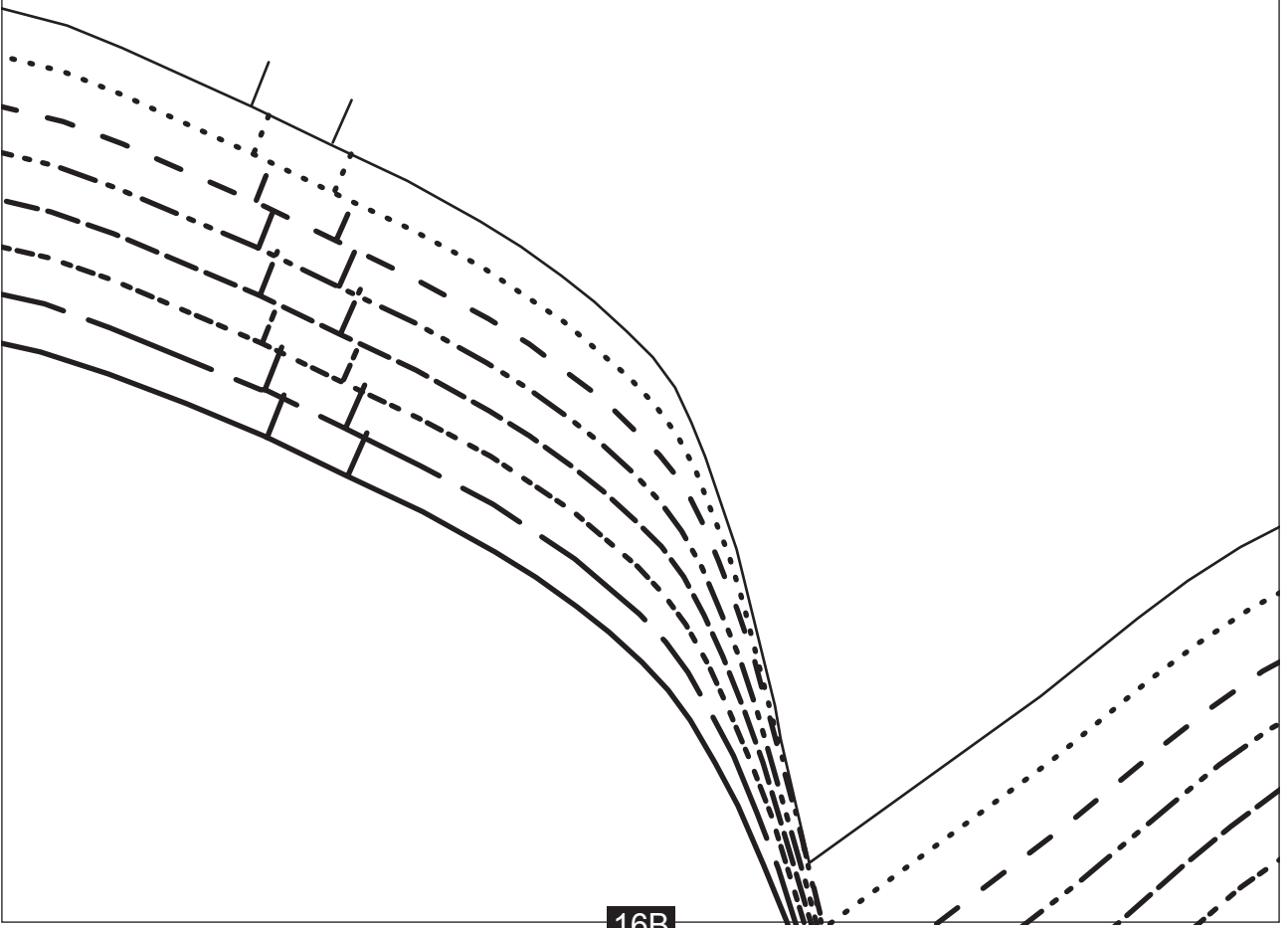
6B



15A

16A

16B



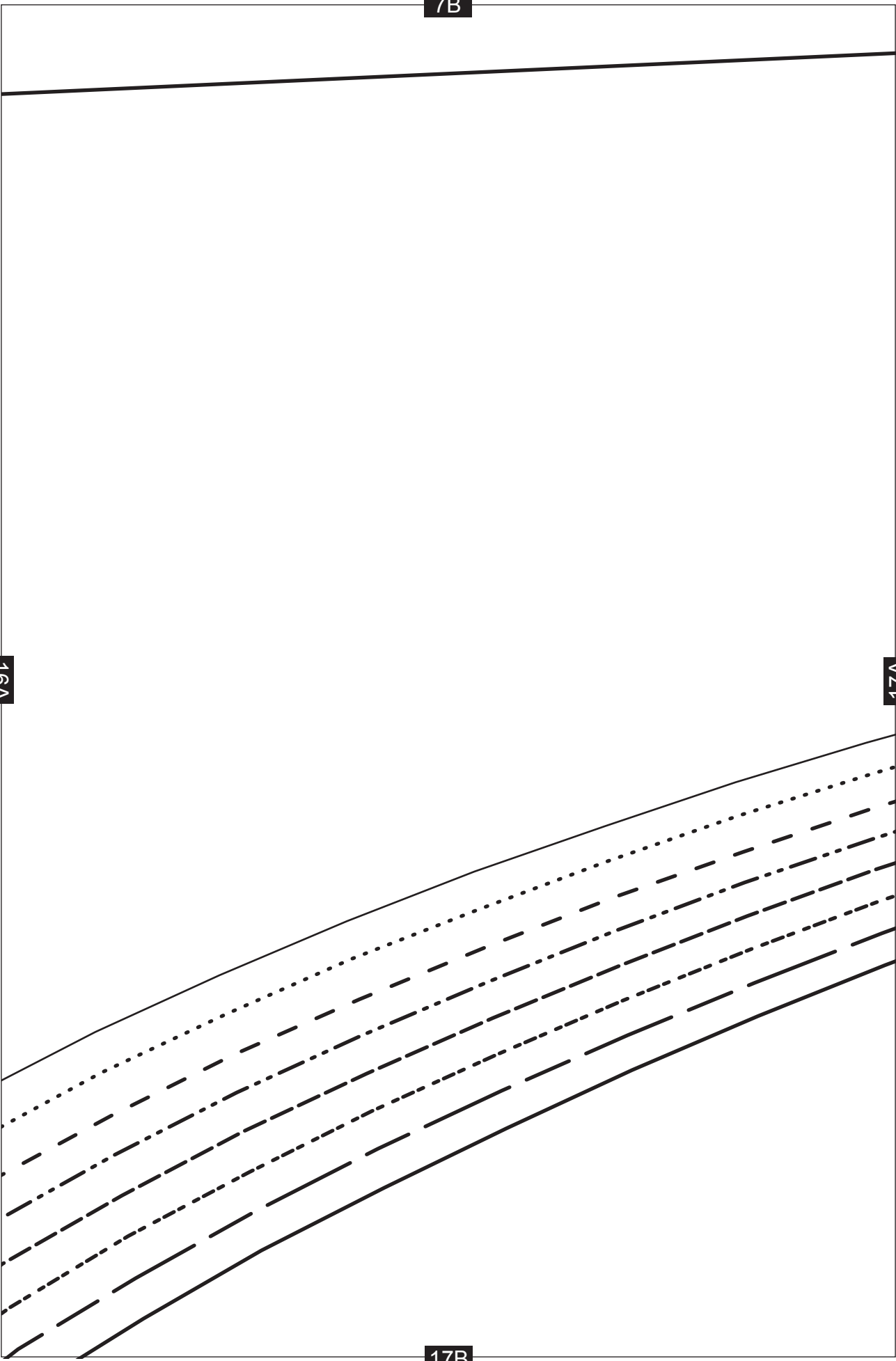


7B

16A

17A

17B



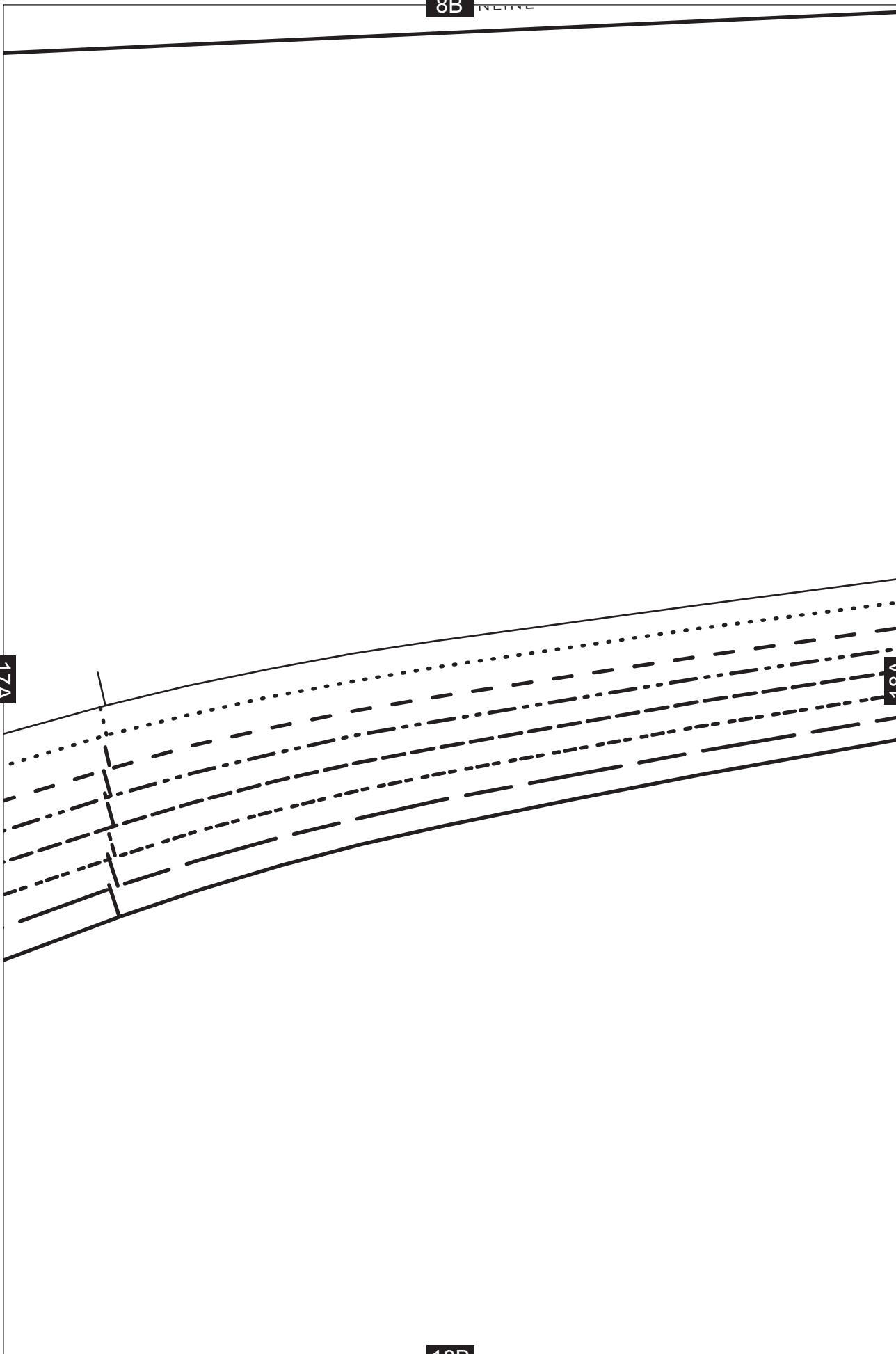
8B

LINE

17A

18A

18B



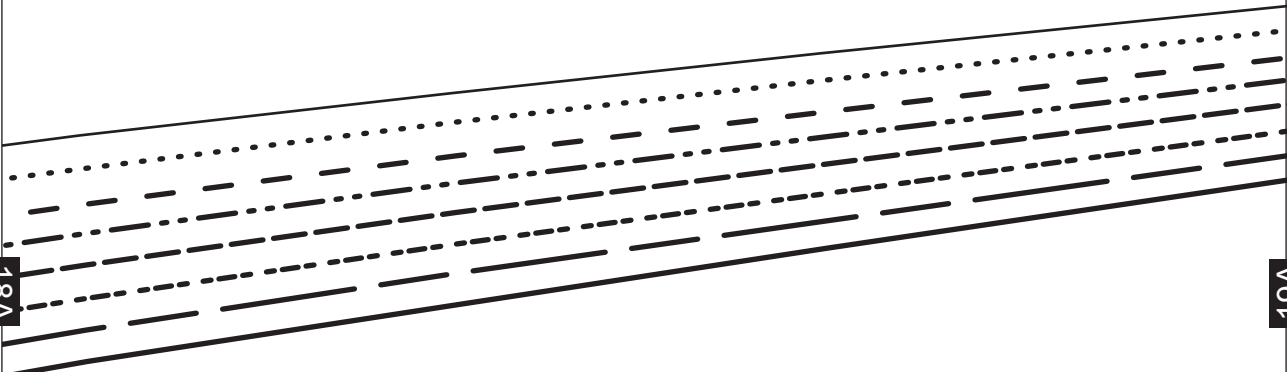
9B



18A

19A

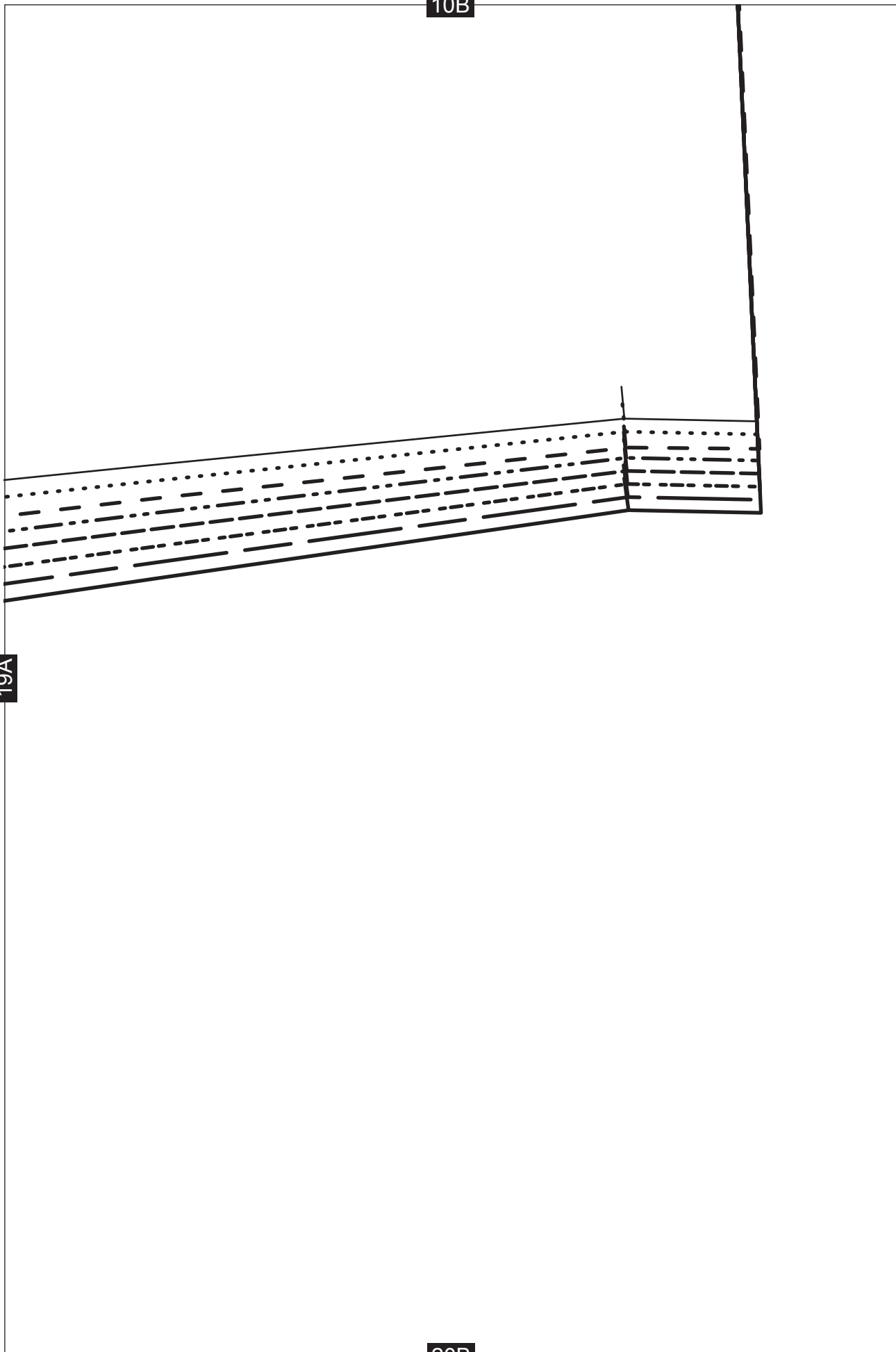
19B



10B

19A

20B



11B

ants

BRIC

GRAINLINE



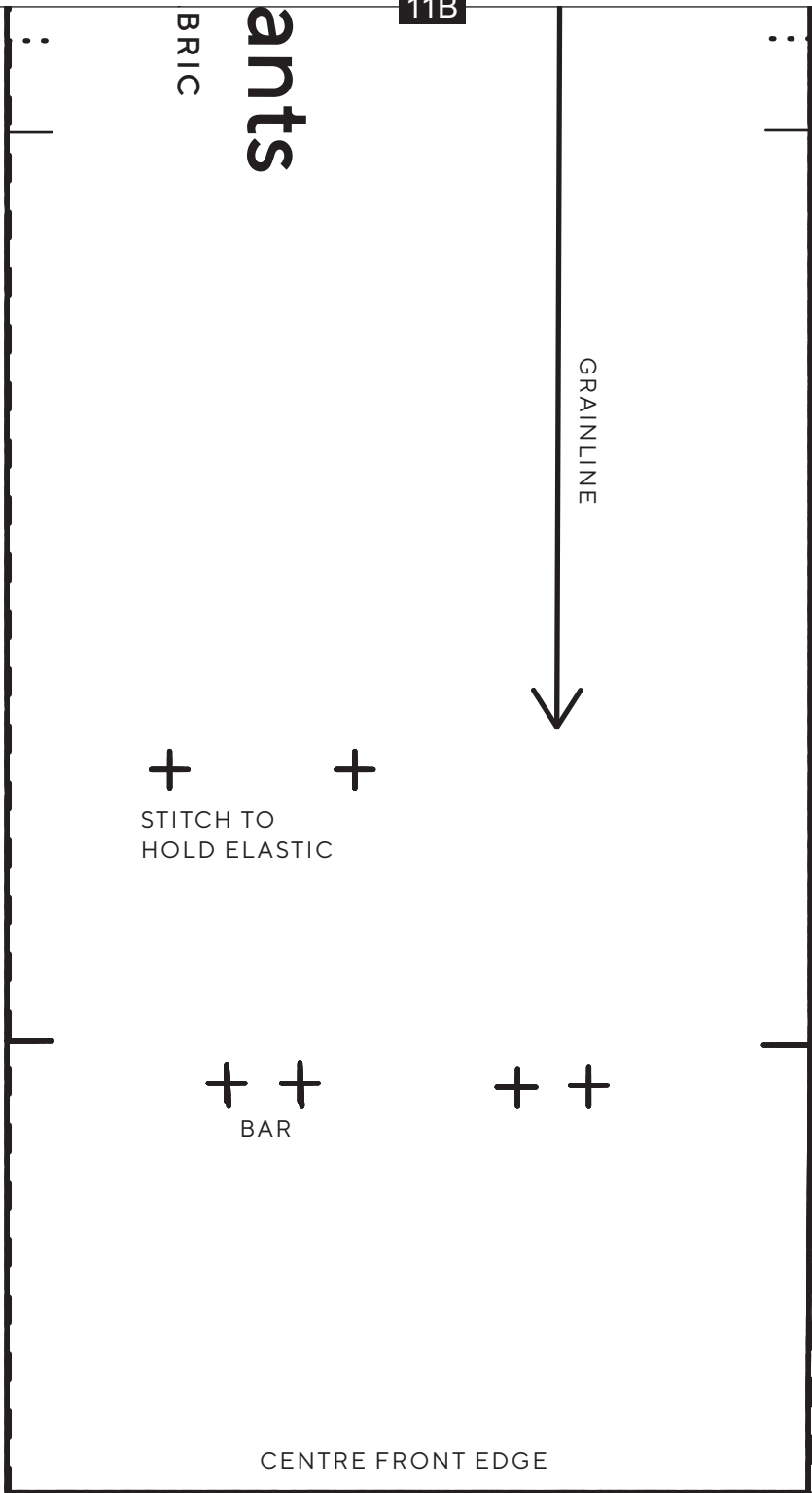
STITCH TO HOLD ELASTIC



BAR



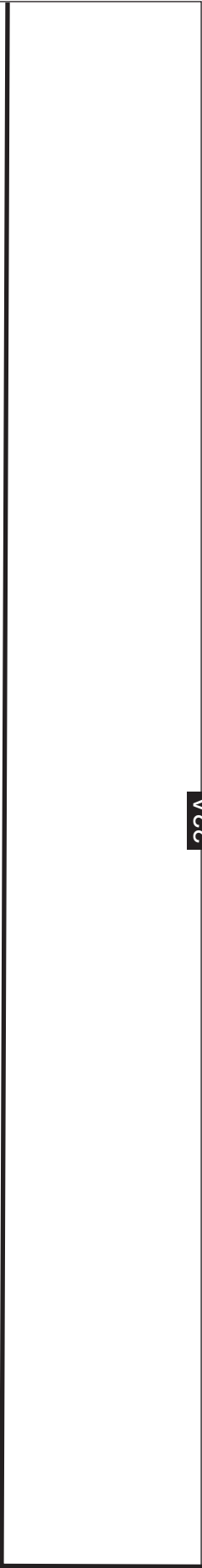
CENTRE FRONT EDGE



21A

21B

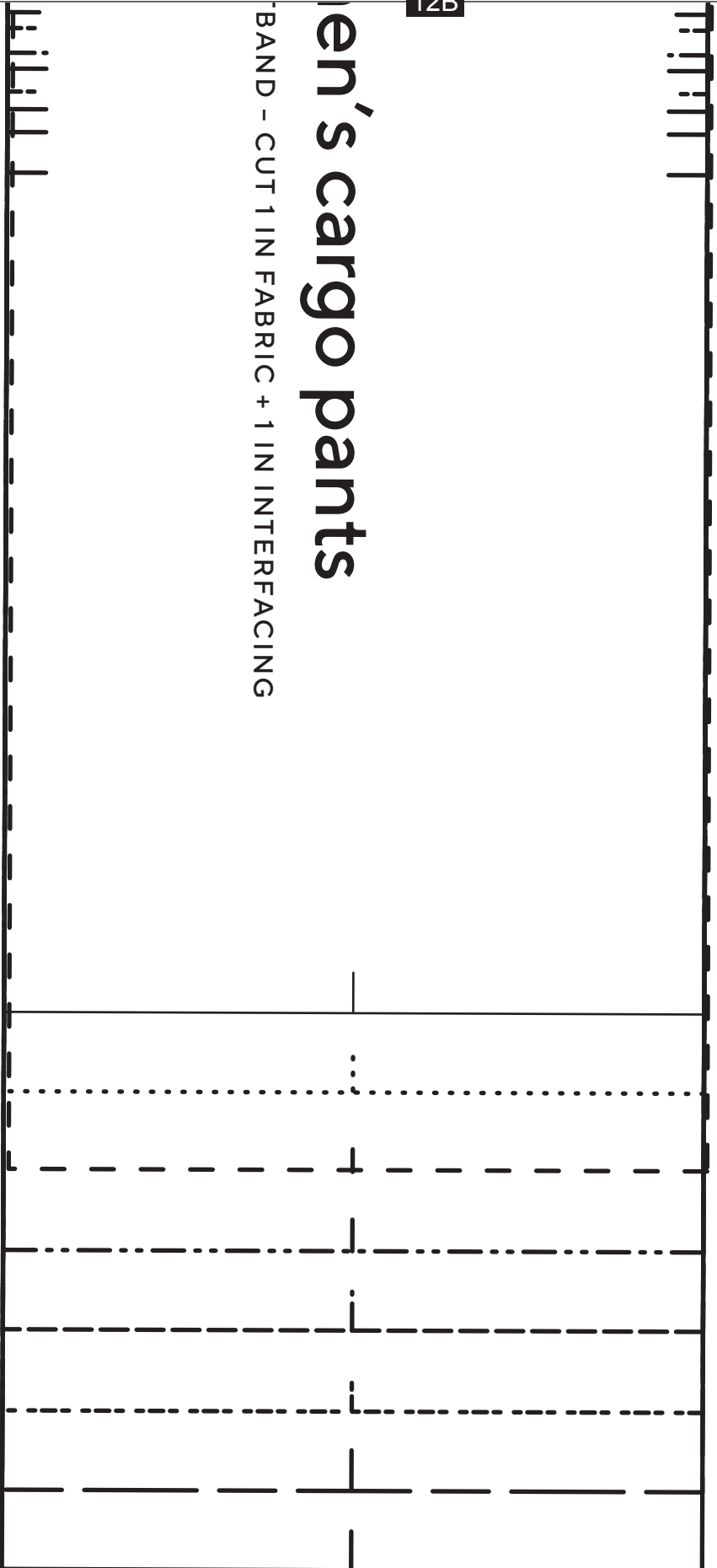
22A



12B

# Men's cargo pants

BAND - CUT 1 IN FABRIC + 1 IN INTERFACING



22B

21A



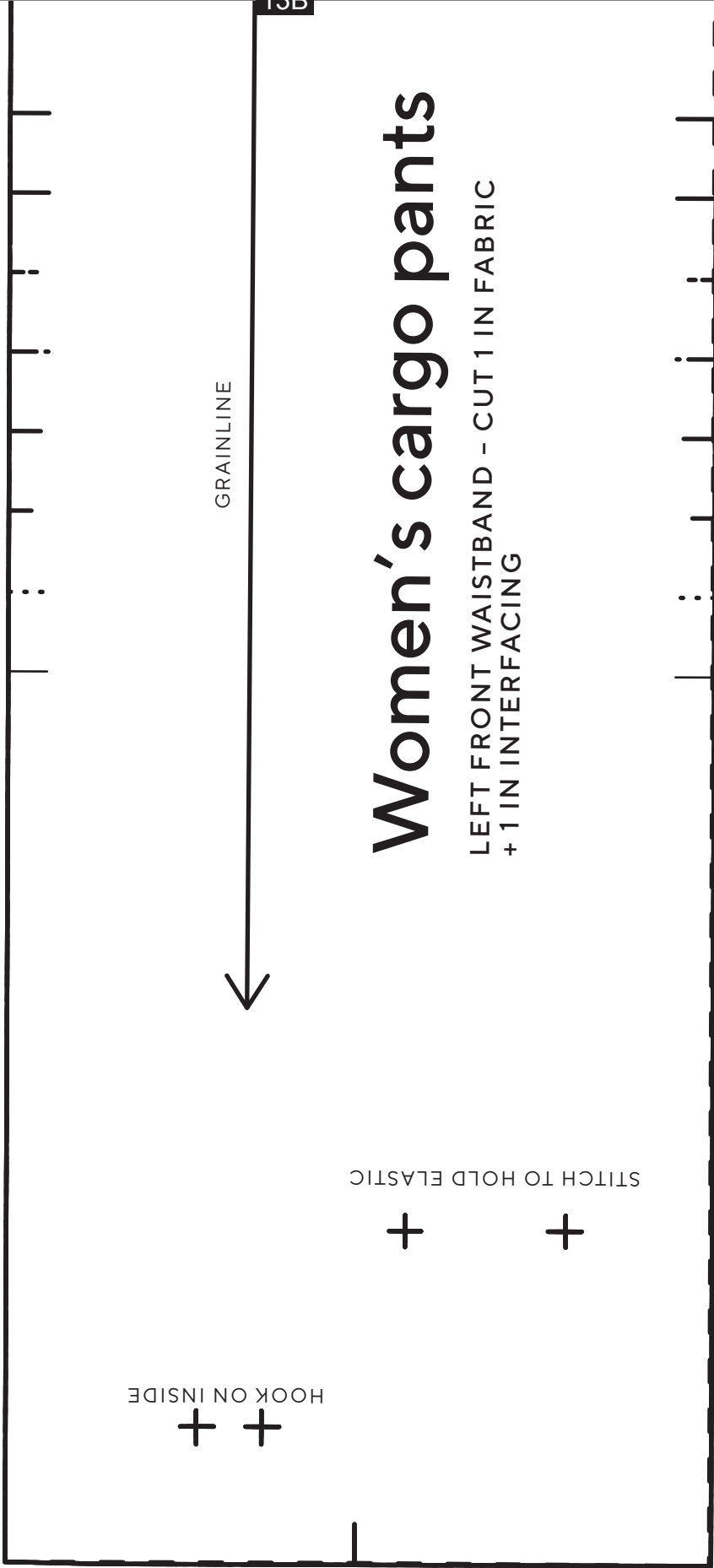
22A

13B

# Women's cargo pants

LEFT FRONT WAISTBAND - CUT 1 IN FABRIC  
+ 1 IN INTERFACING

GRAINLINE



HOOK ON INSIDE



STITCH TO HOLD ELASTIC



23A

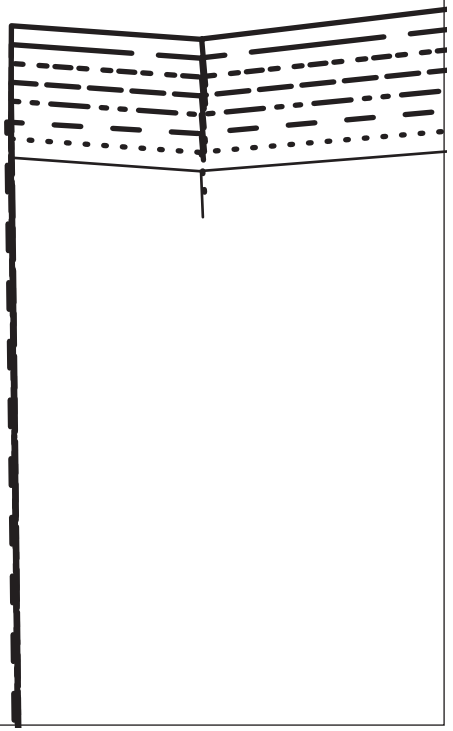
23B

14B

23A

24A

24B

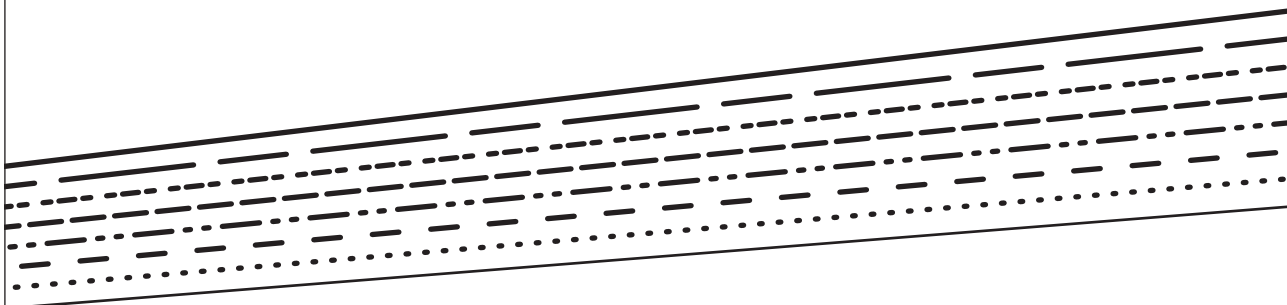




15B

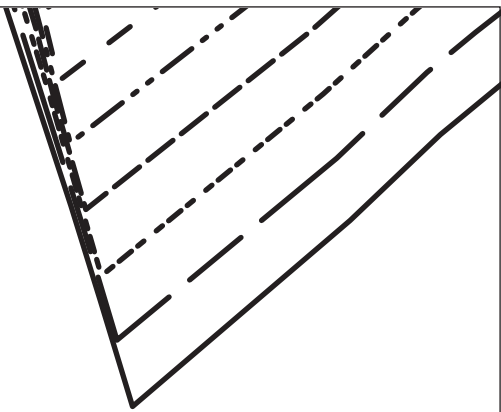
24A

25A

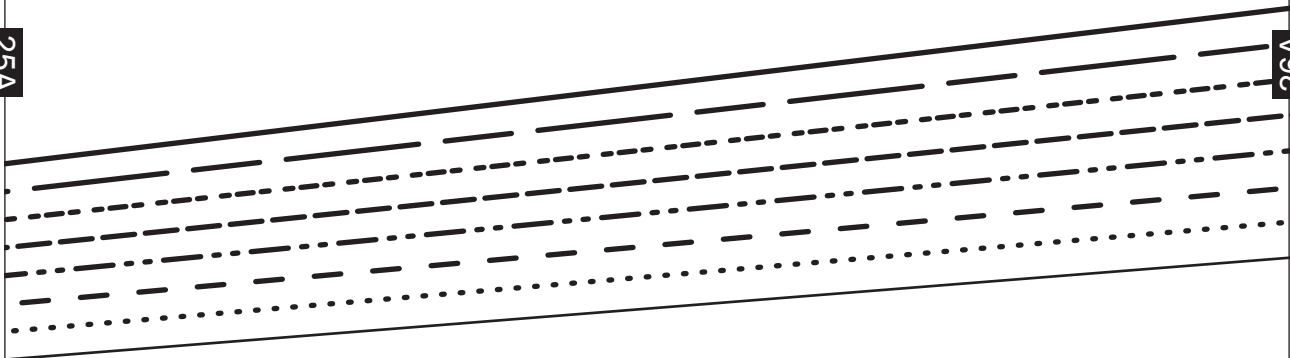


25B

16B



25A



26A

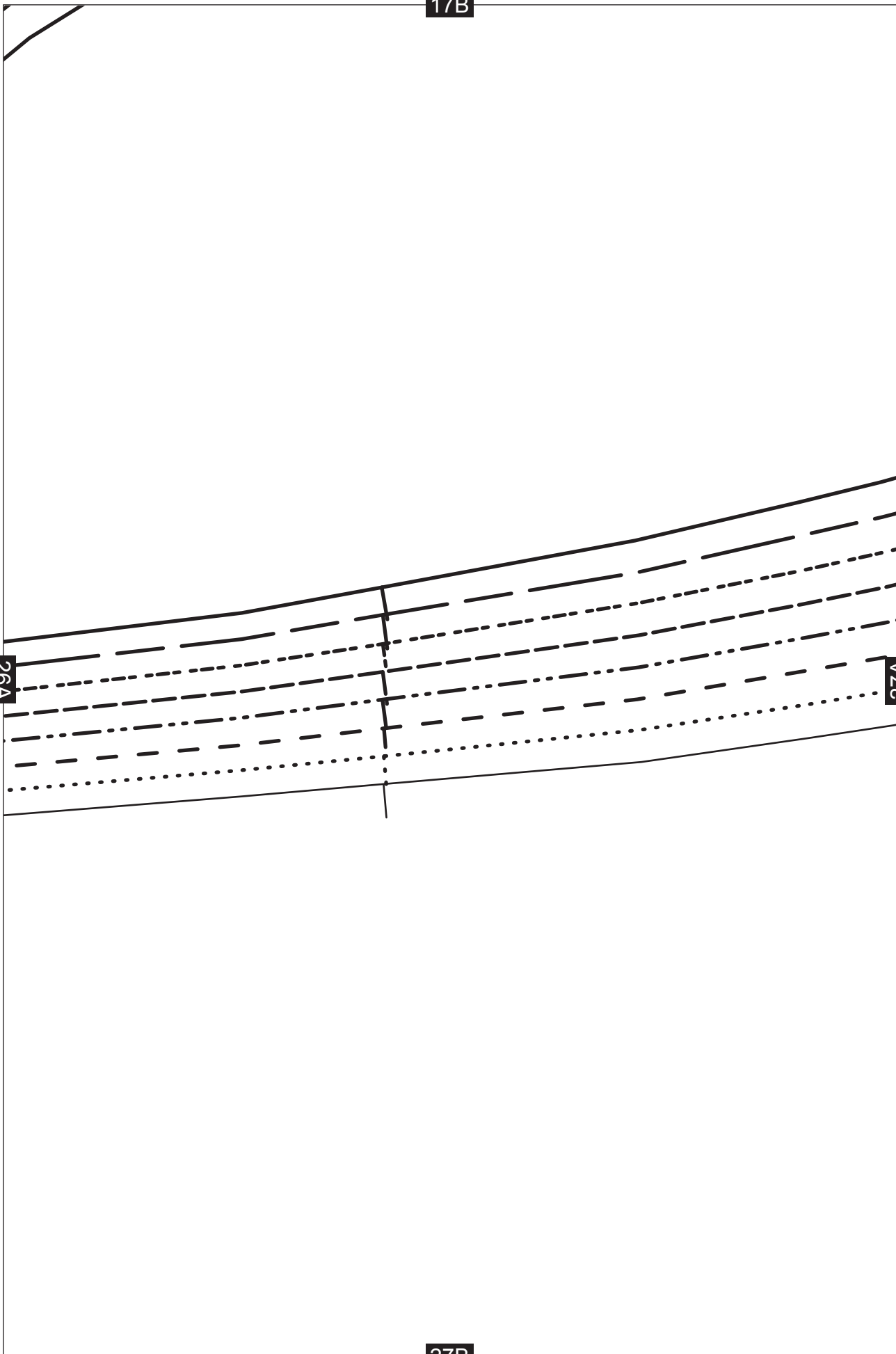
26B

17B

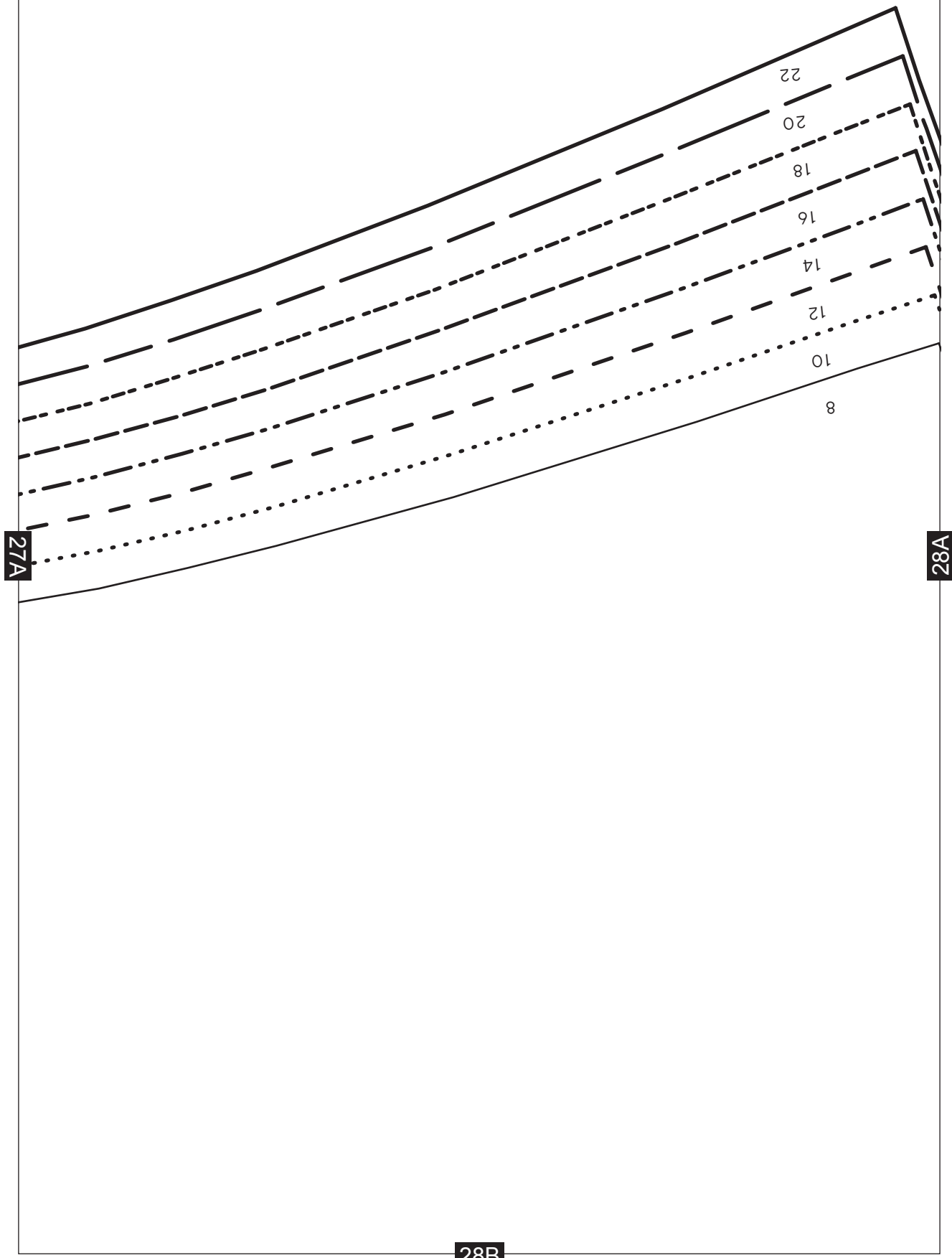
26A

27A

27B



18B

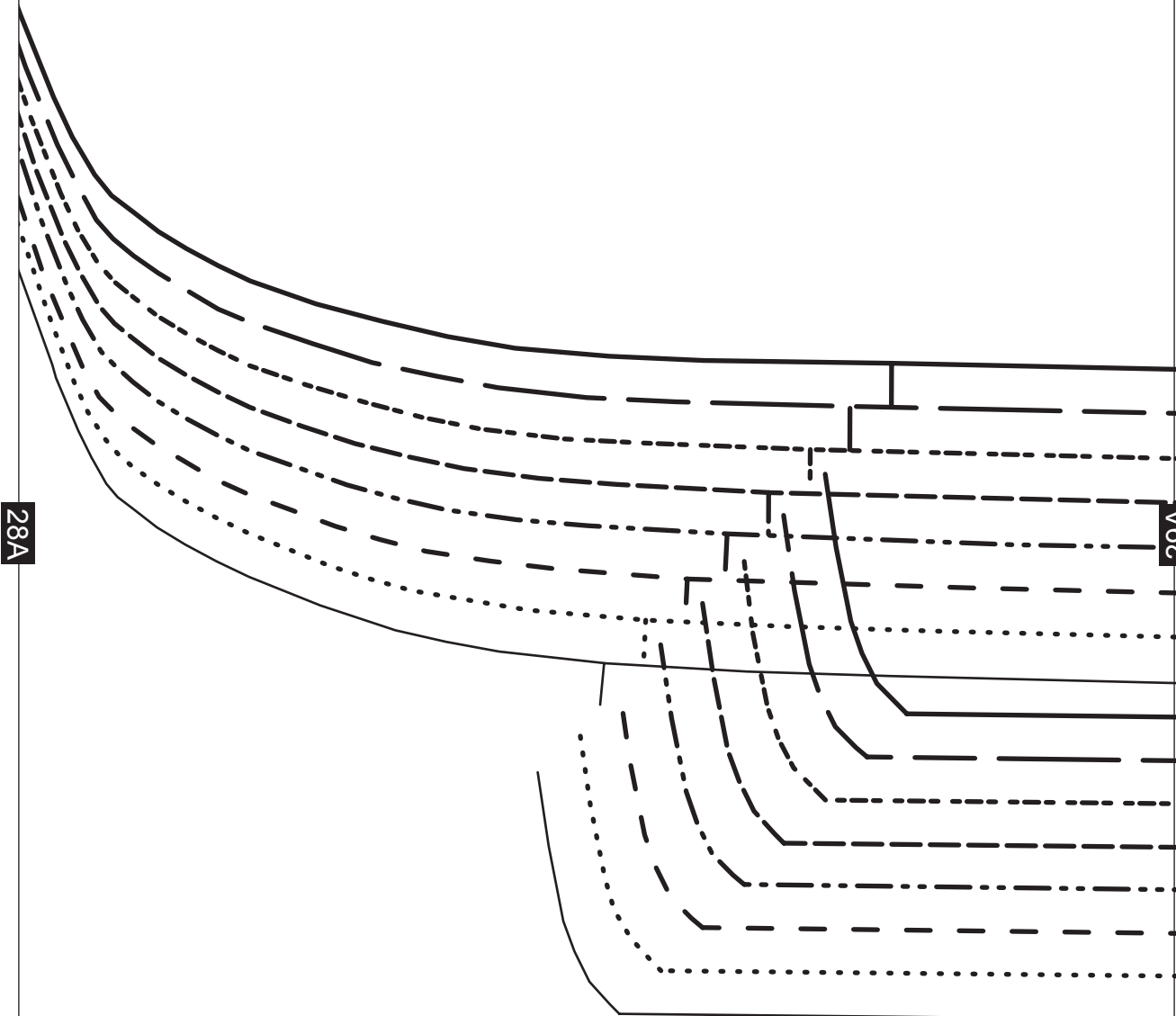


27A

28A

28B

19B



28A

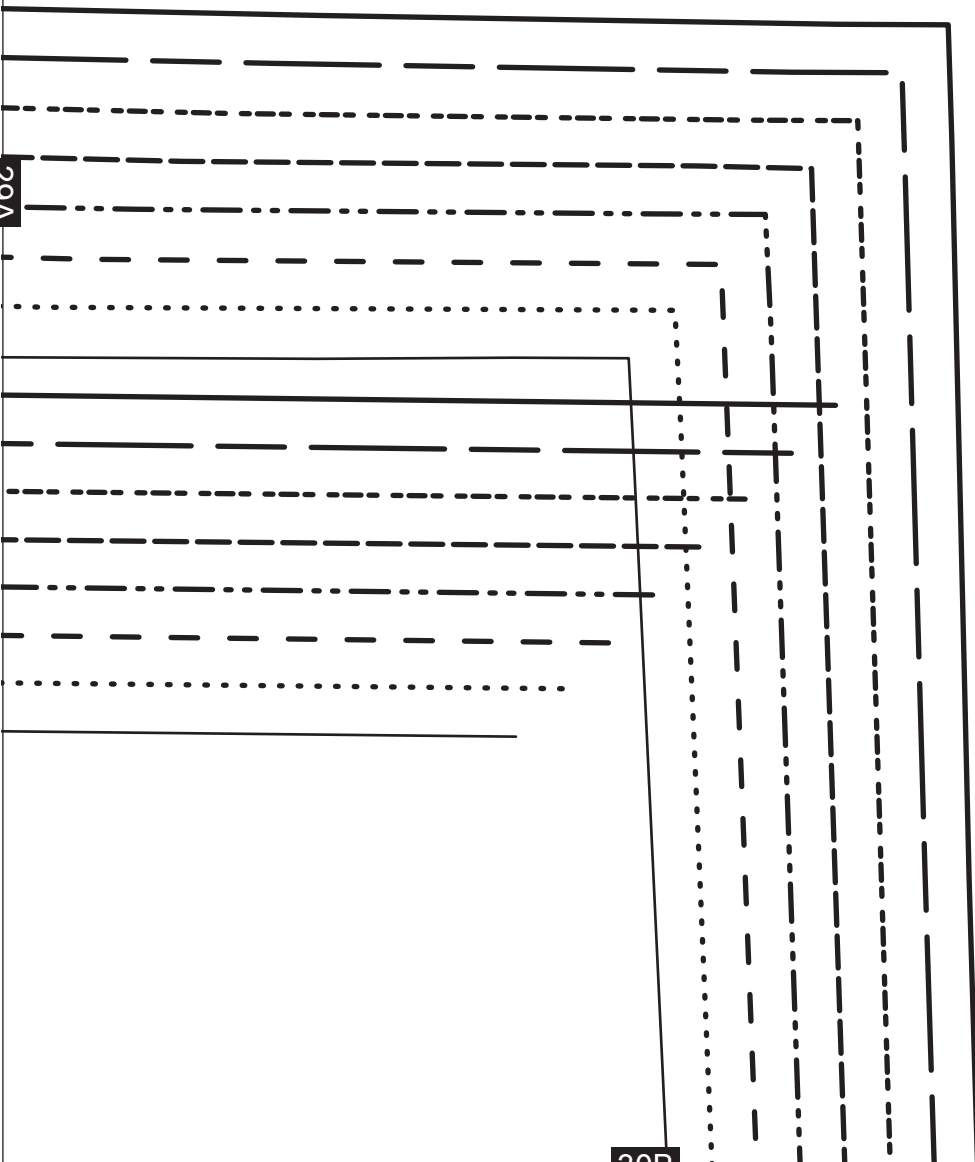
29A

29B

20B

29A

30B



21B

# Women's cargo pants

POCKET FLAP - CUT 4



31A

# Women's cargo pants

PATCH POCKET - CUT 2

31B

22B

FOLD

ts

31A

32A

rgo pants

TOP EDGE

32B



23B

# Women's cargo pant

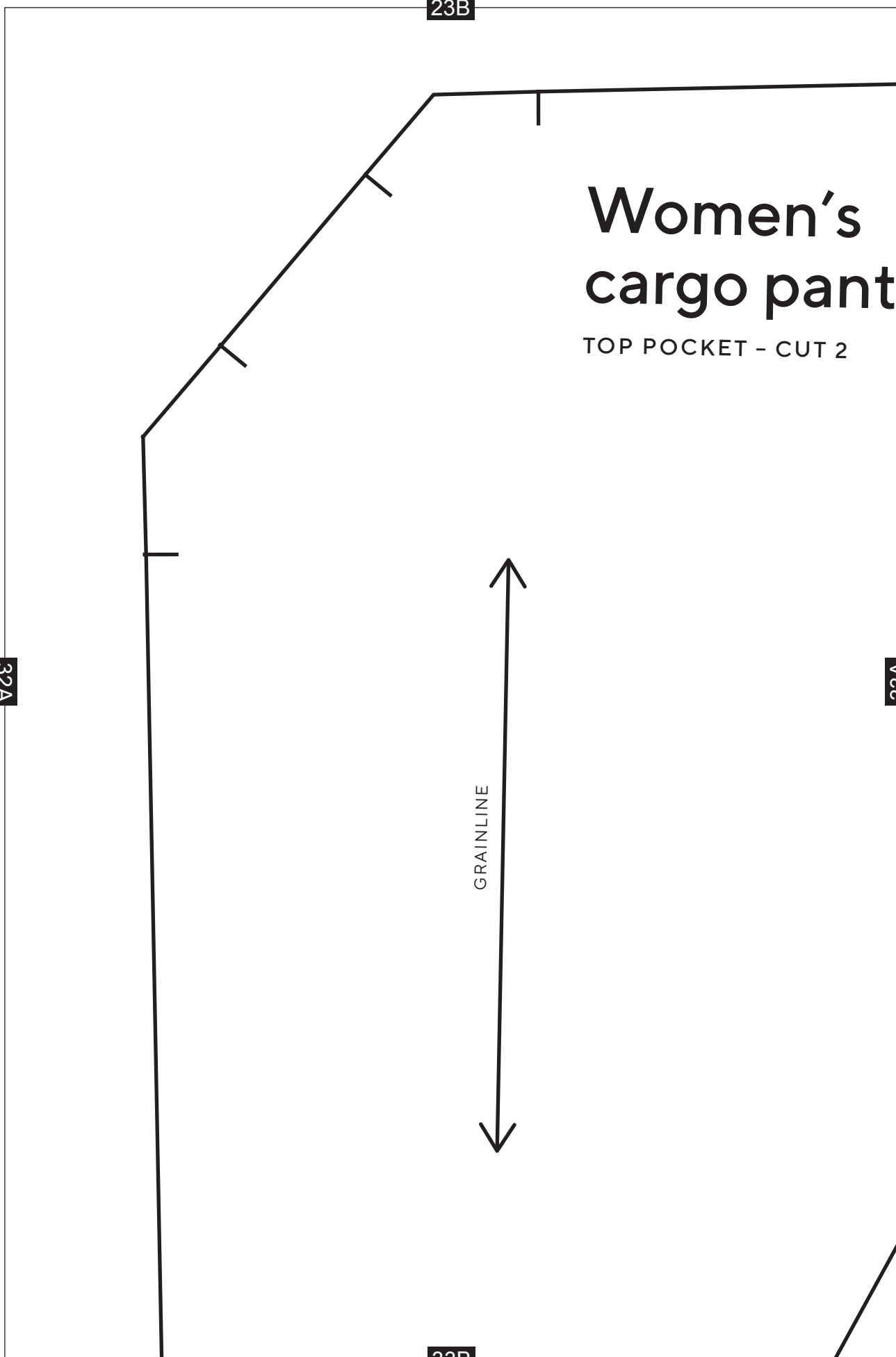
TOP POCKET - CUT 2

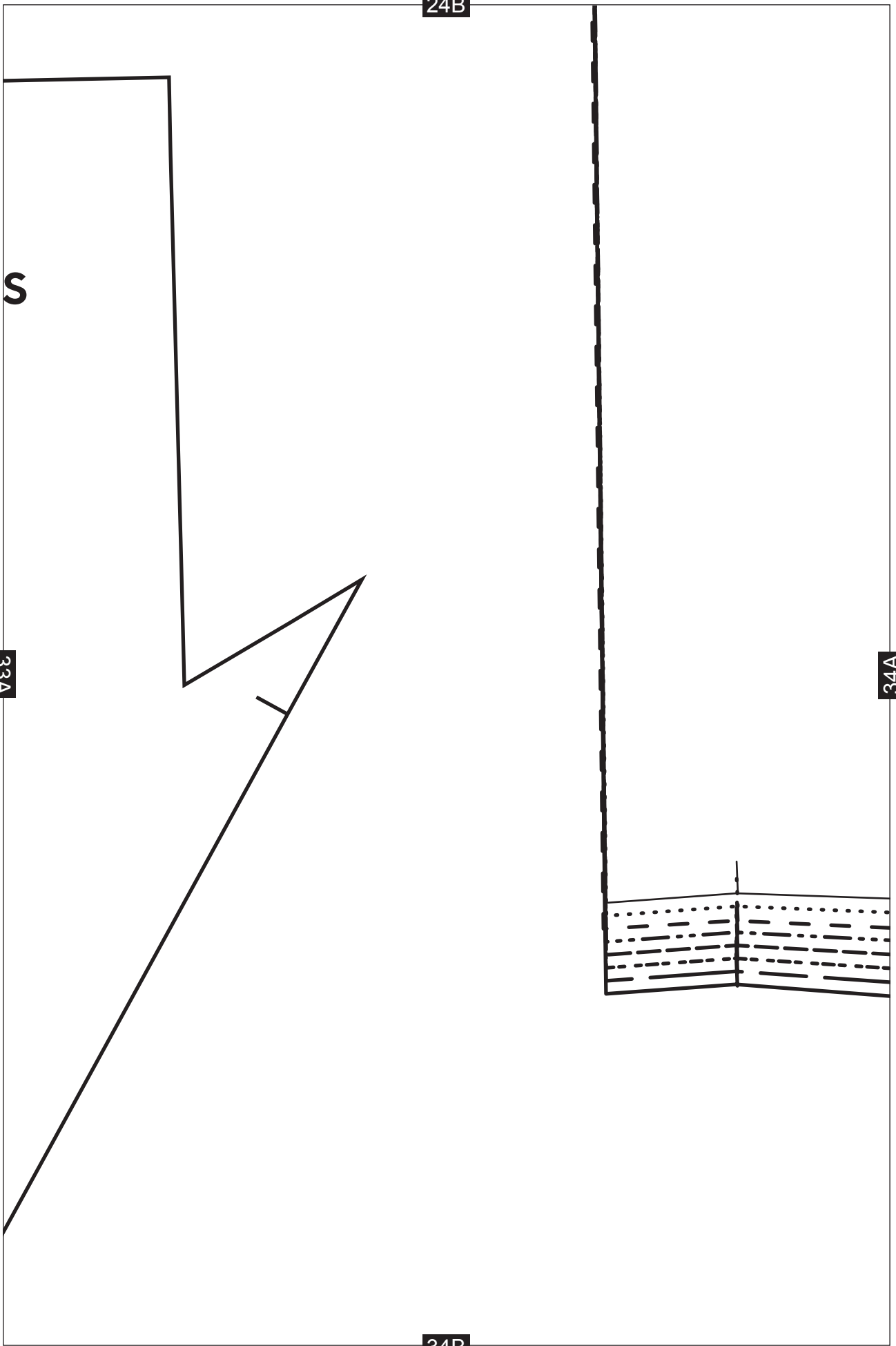
32A

33A

GRAINLINE

33B



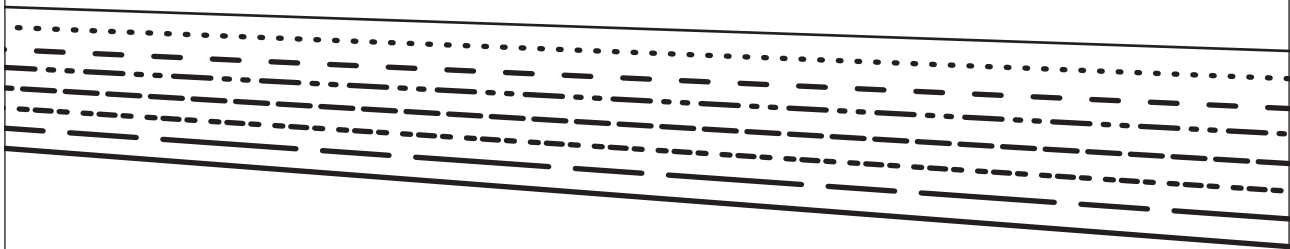


25B



34A

35A



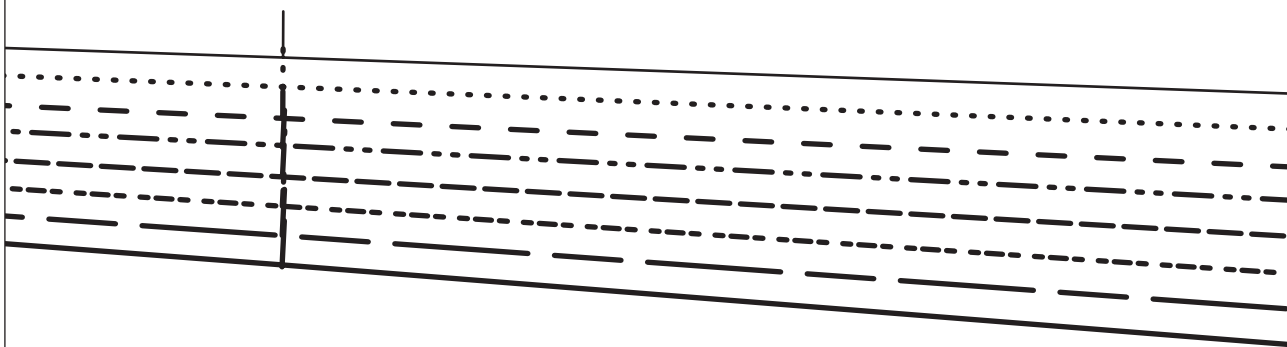
35B

26B

ergo pants

35A

36A



36B

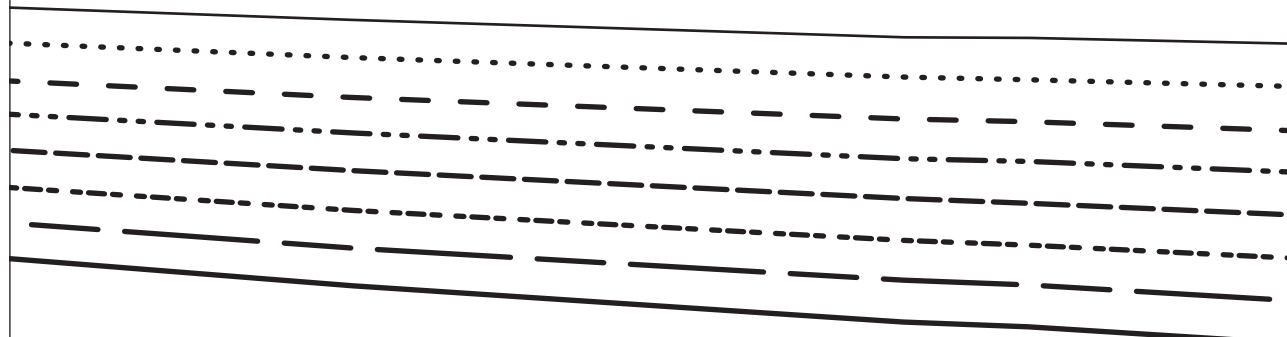
27B

GRAINLINE

Women's ca  
LEFT FRONT - CUT 1

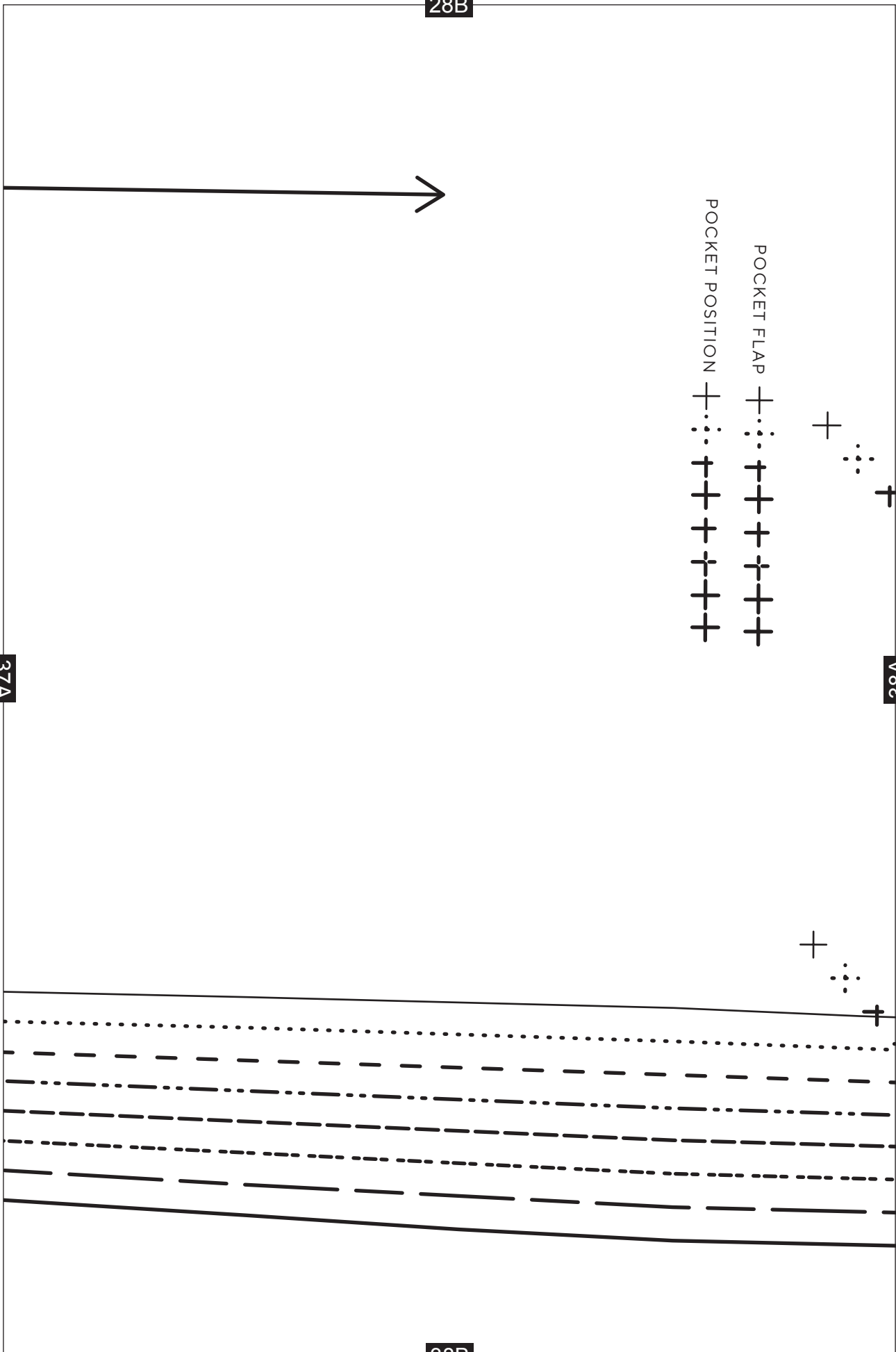
36A

37A



37B

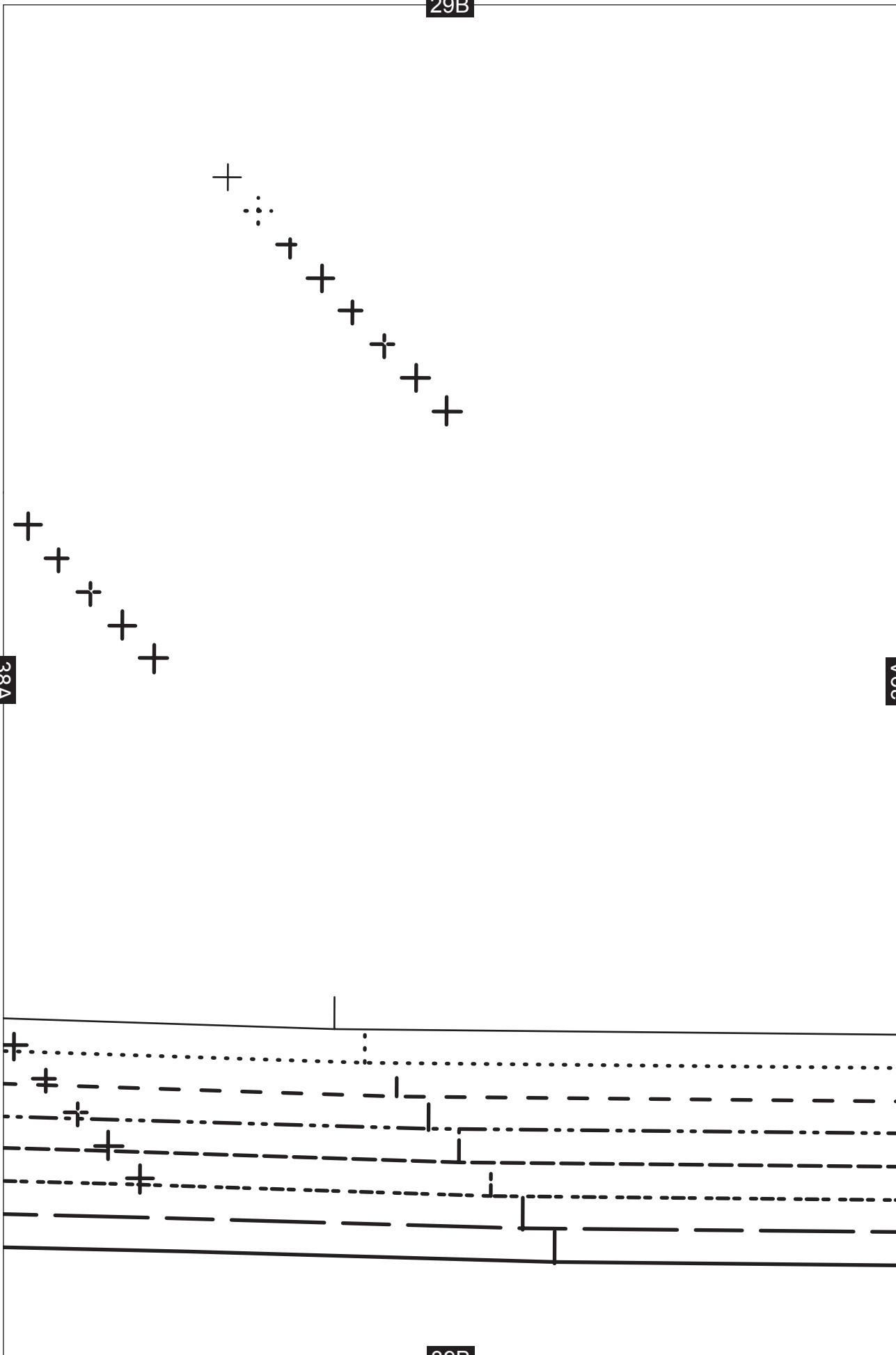
28B



29B

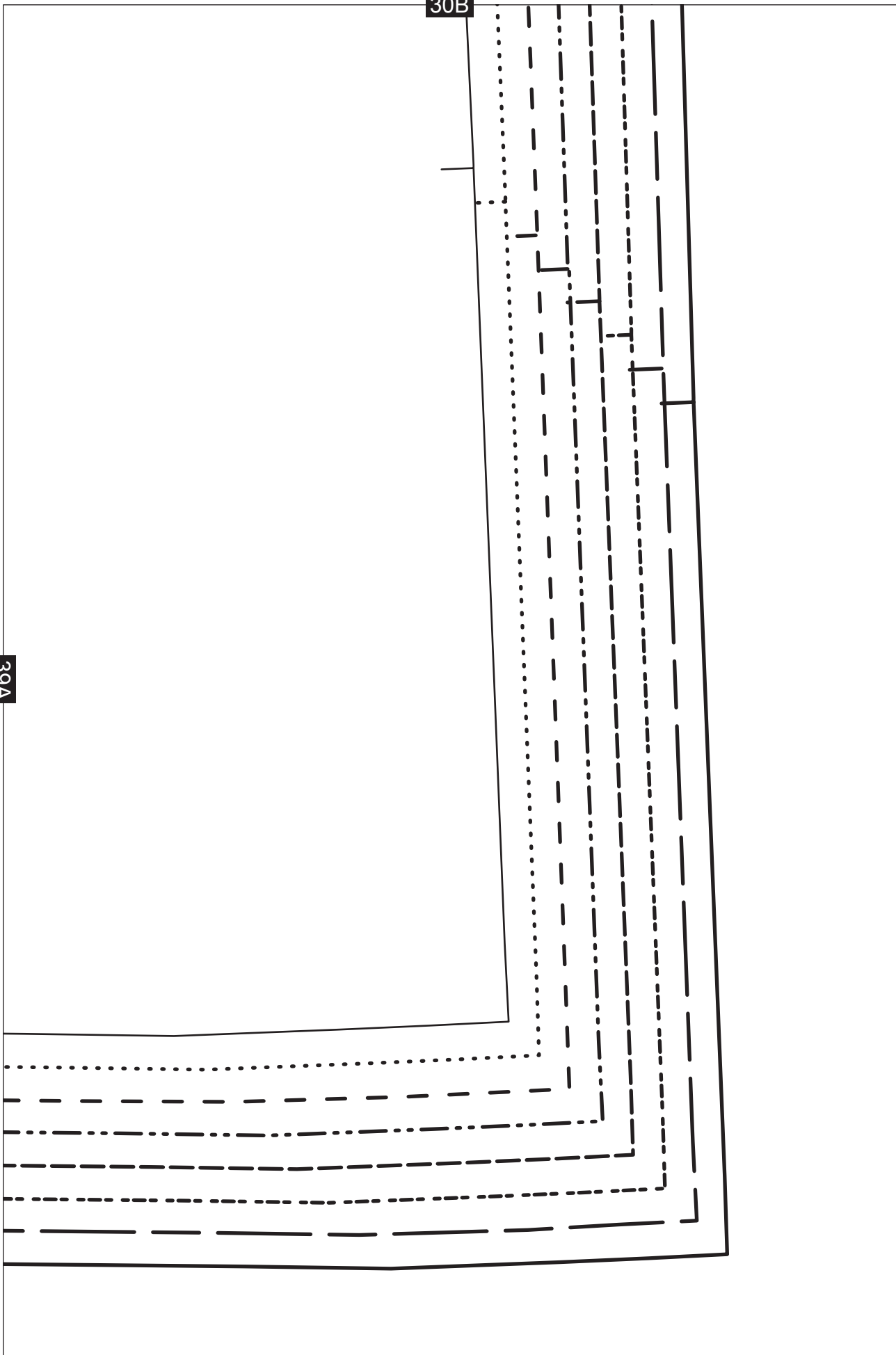
38A

39A



39A

30B





31B

GRAINLINE



+



41A

32B



+ BUTTON +

+



4-1A

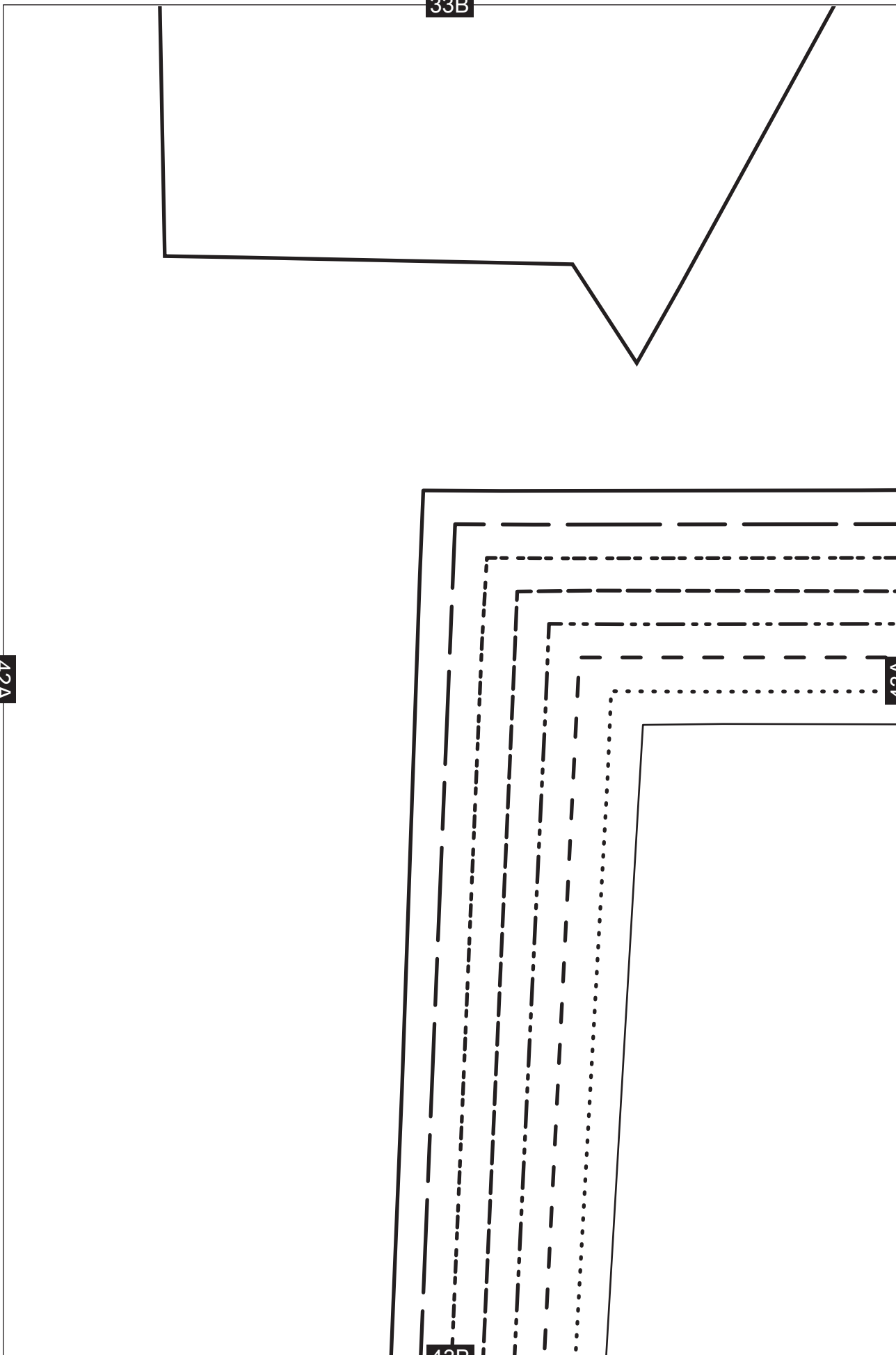
42A

33B

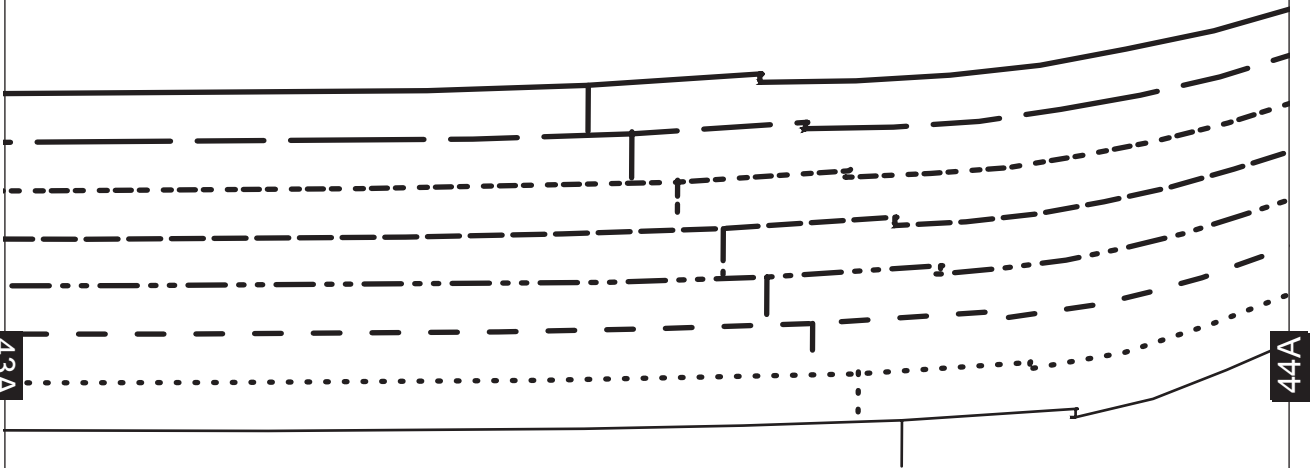
42A

43A

43B



34B

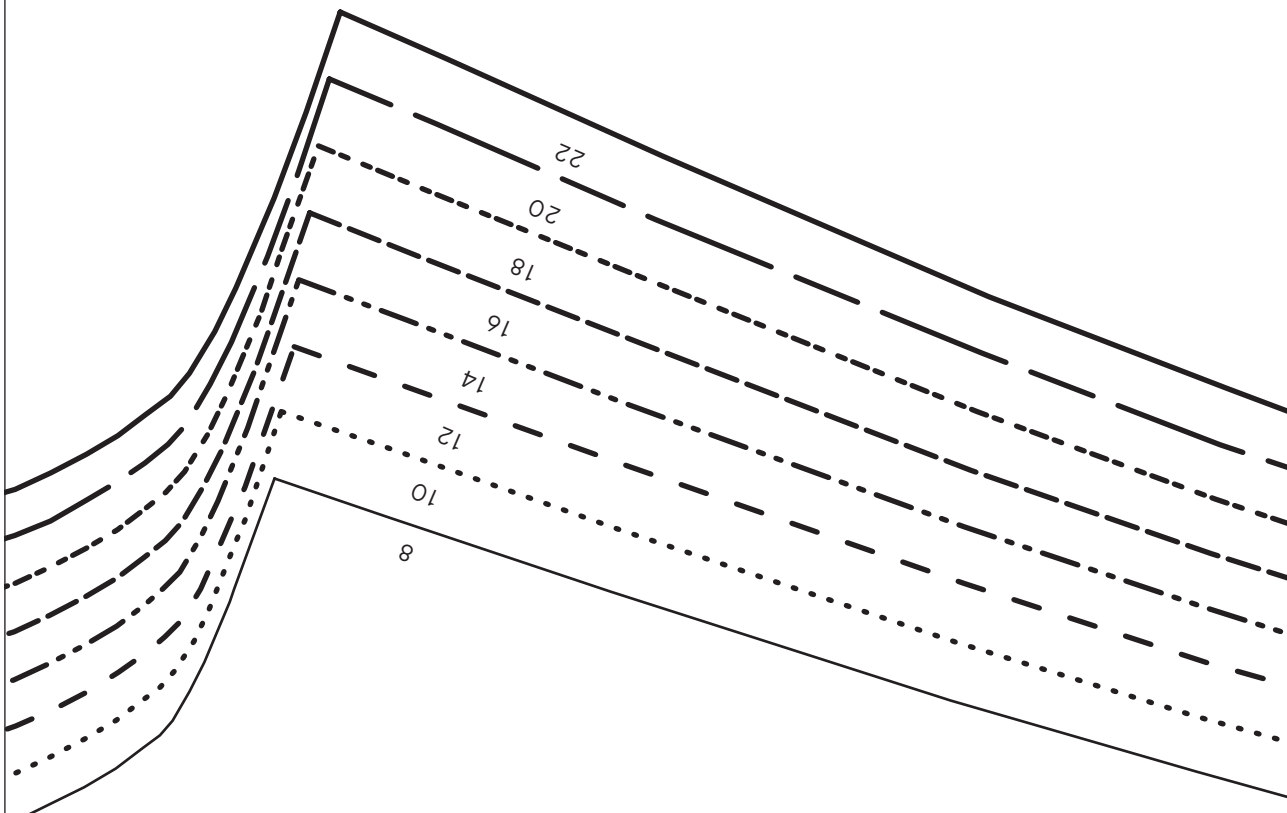


43A

44A

44B

35B

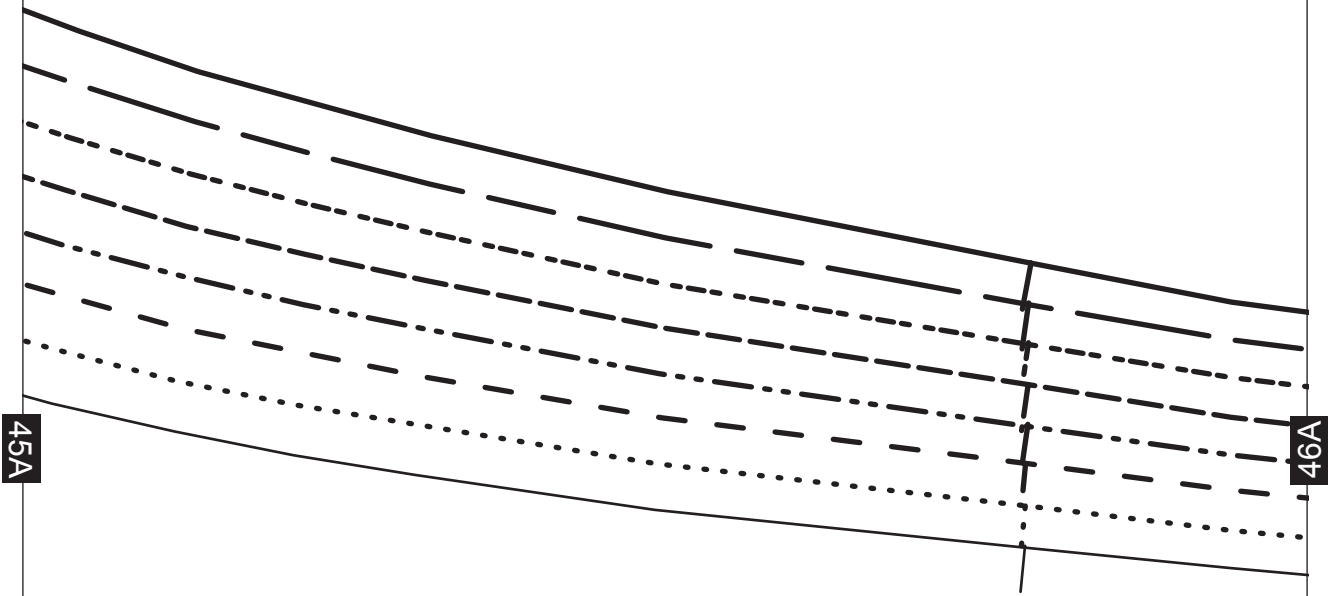


44A

45A

45B

36B

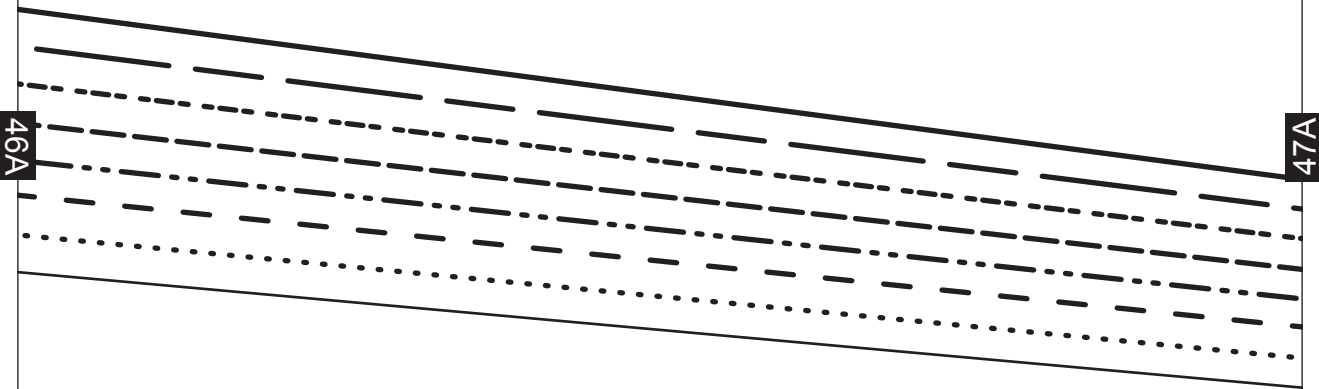


45A

46A

46B

37B

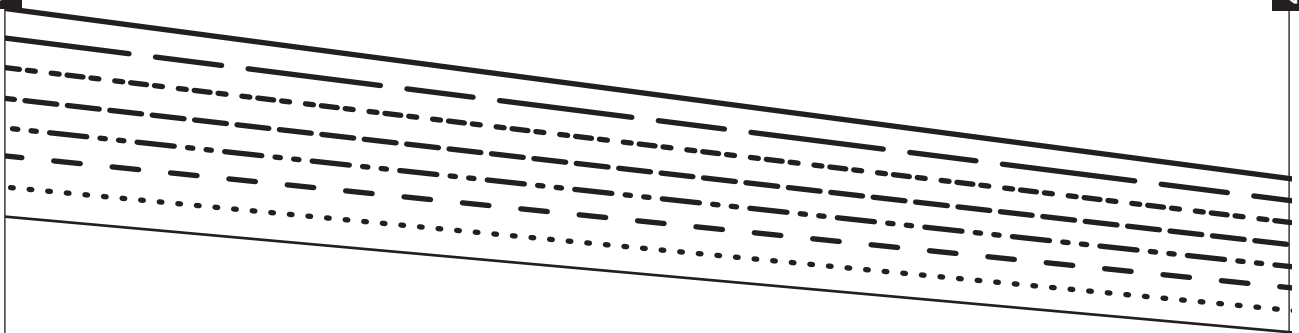


47B

38B

47A

48A

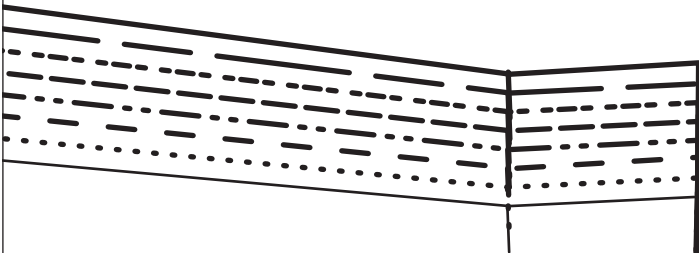


48B



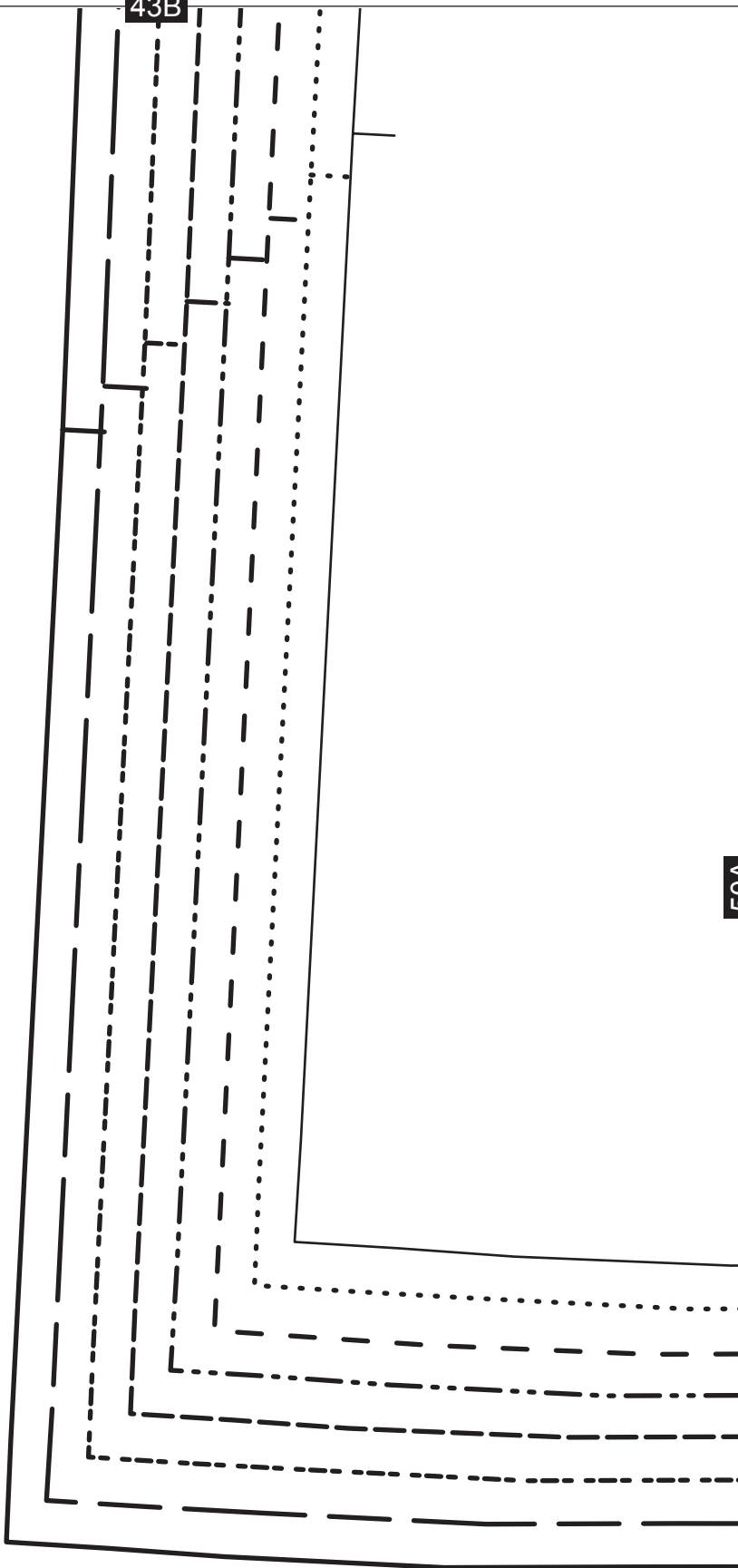
39B

48A



49B

43B

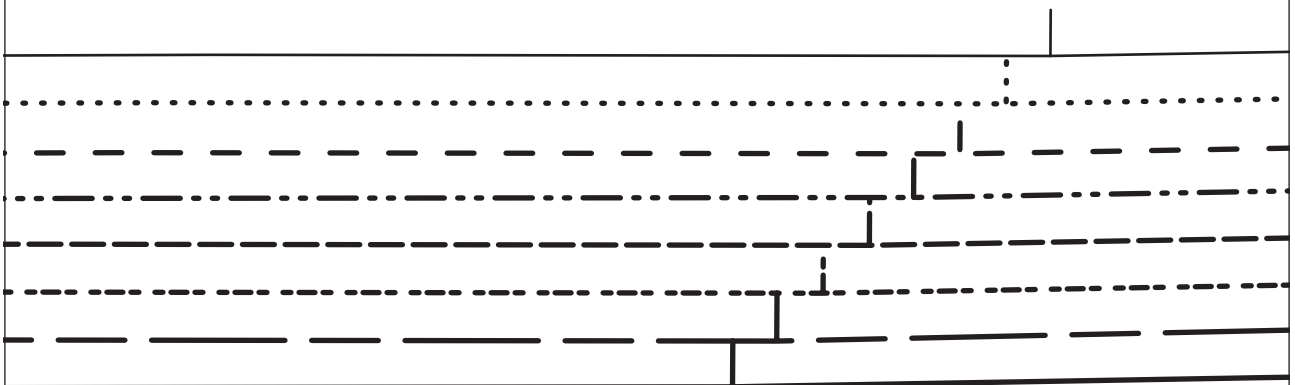
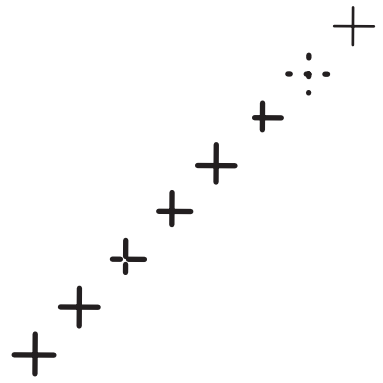


50A

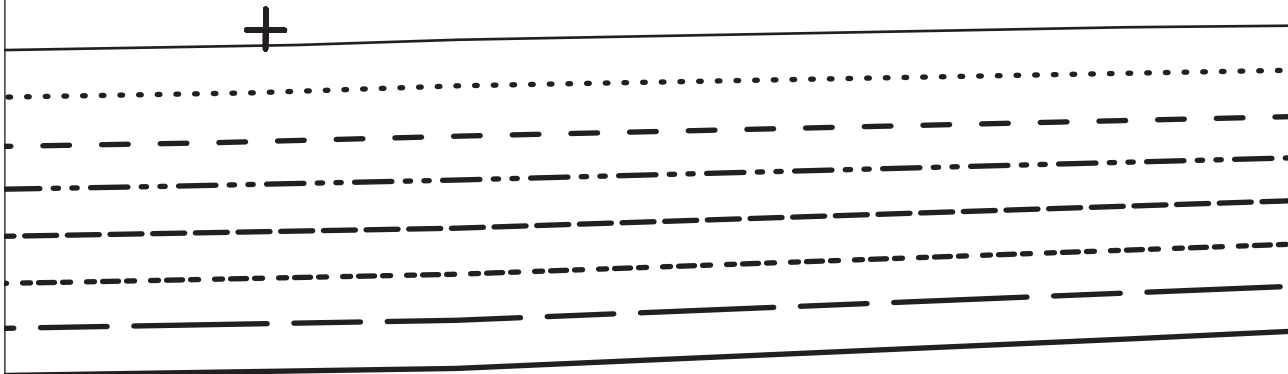
44B

50A

51A



51A



POCKET FLAP



POCKET POSITION

45B



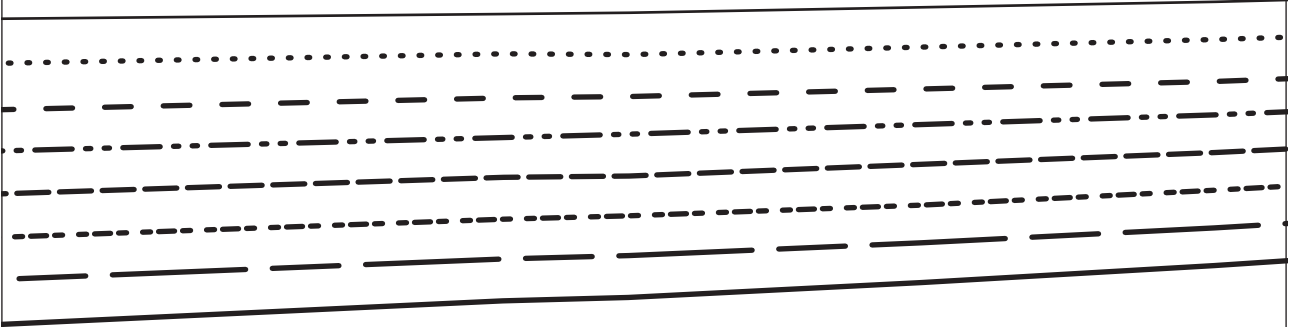
52A

46B

cargo pants

52A

53A



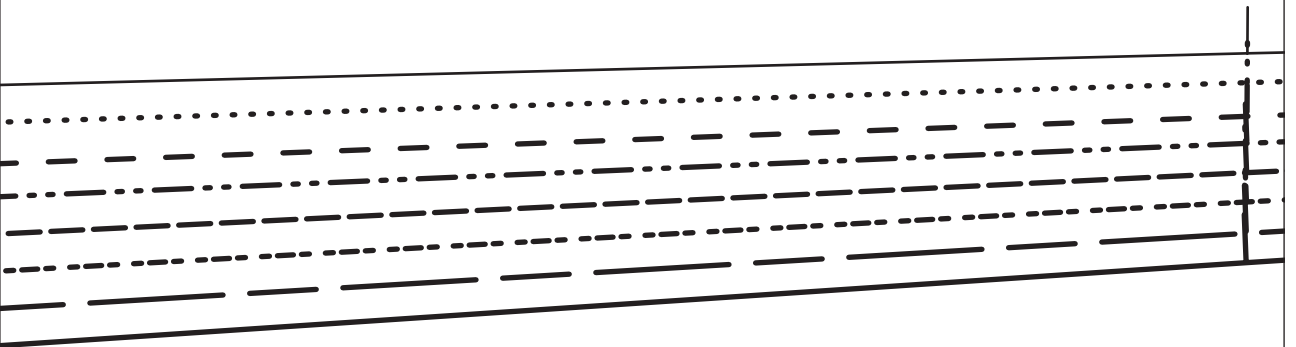
47B

GRAINLINE

Women's  
RIGHT FRONT - CUT 1

53A

54A

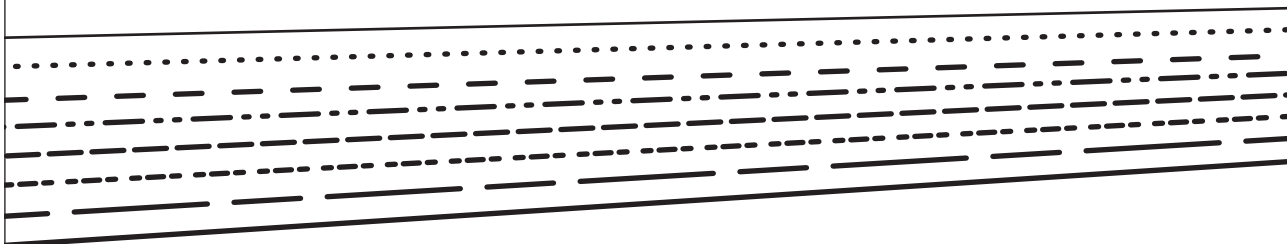


48B



54A

55A



49B

55A

