

THE GREAT BRITISH *Sewing Bee*

Tea Dress pattern

Project design © Love Productions 2013

This design is protected by copyright
and must not be made for resale.



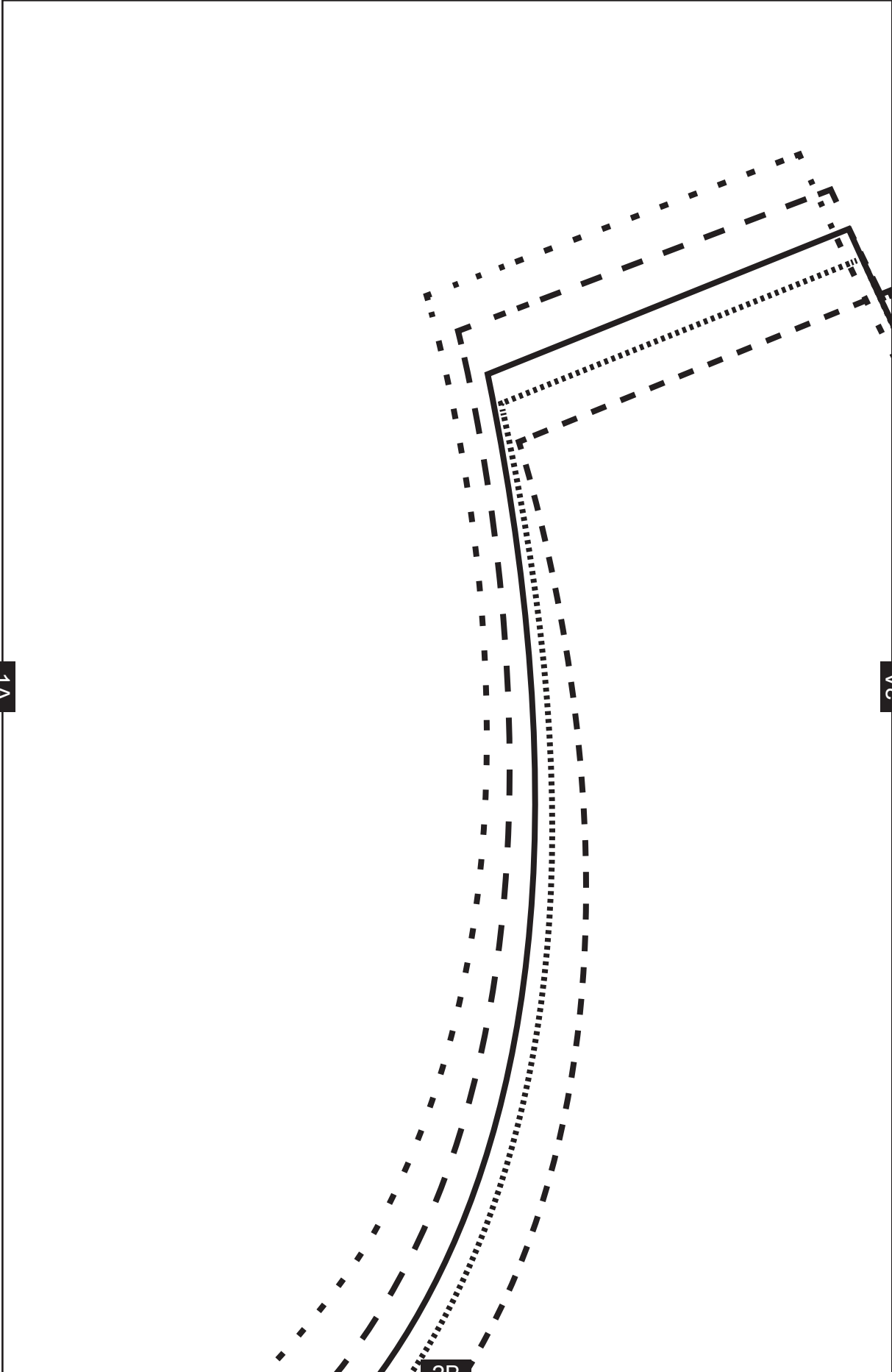
1A

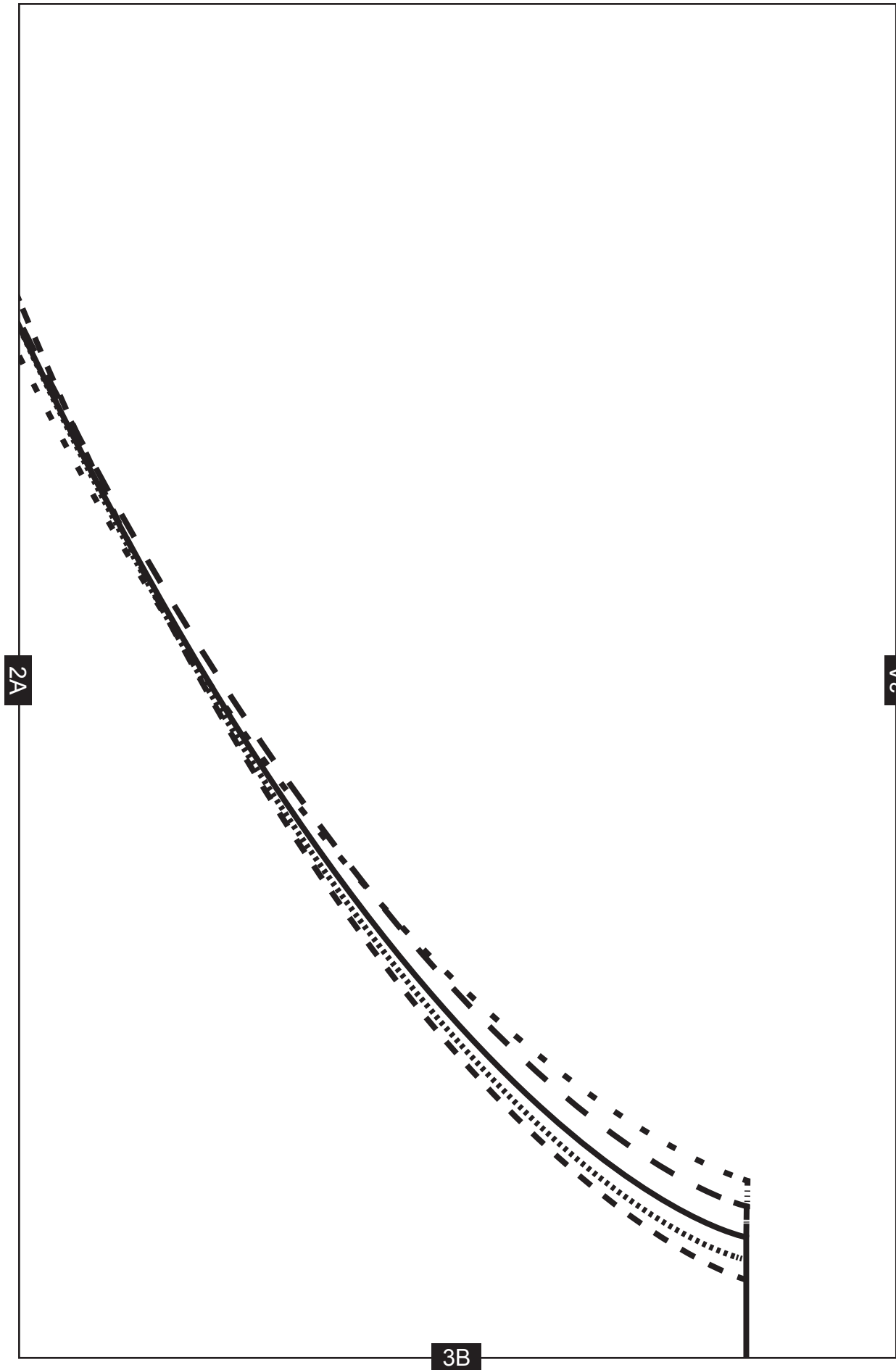
1B

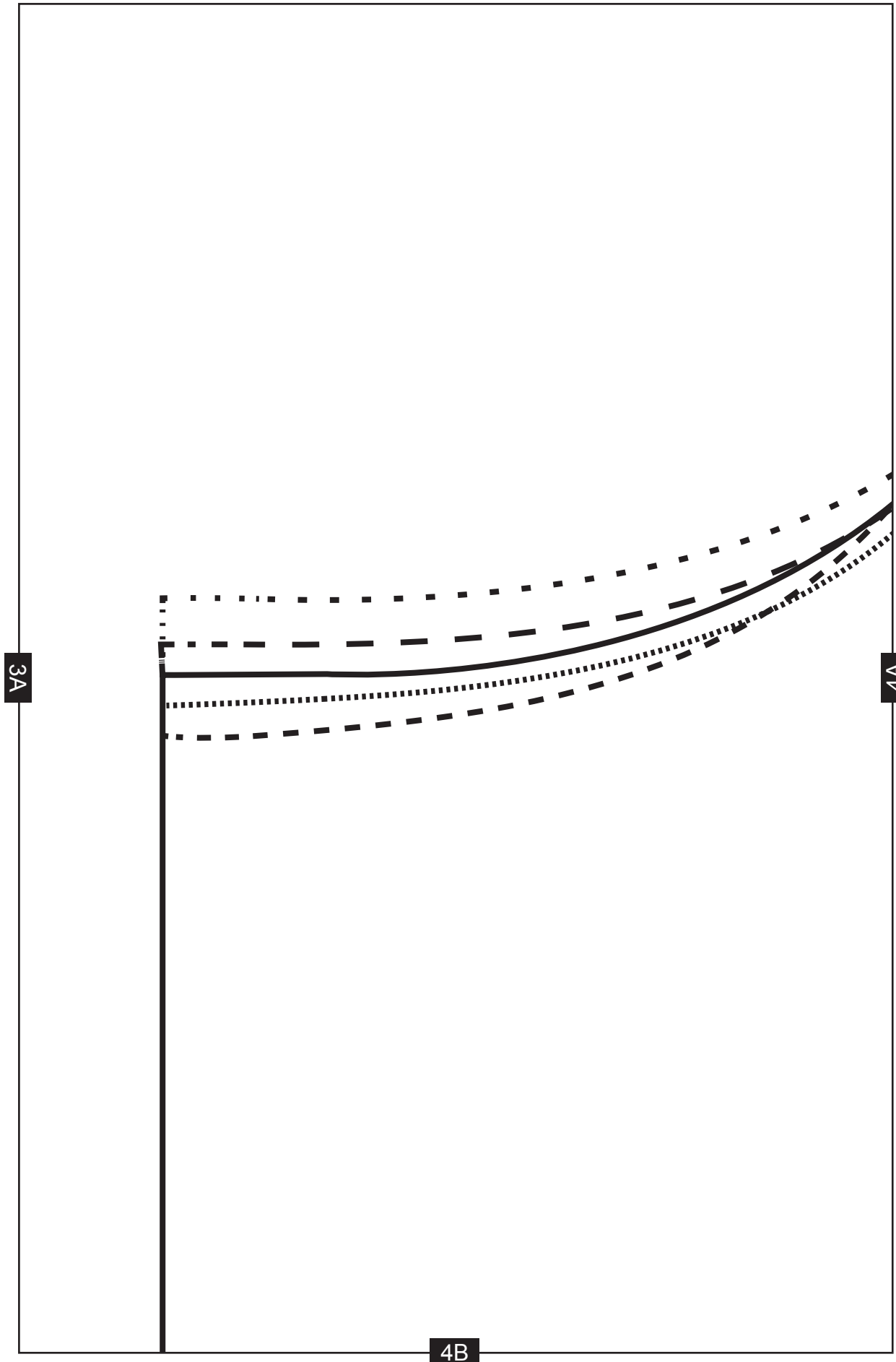
1A

2A

2B



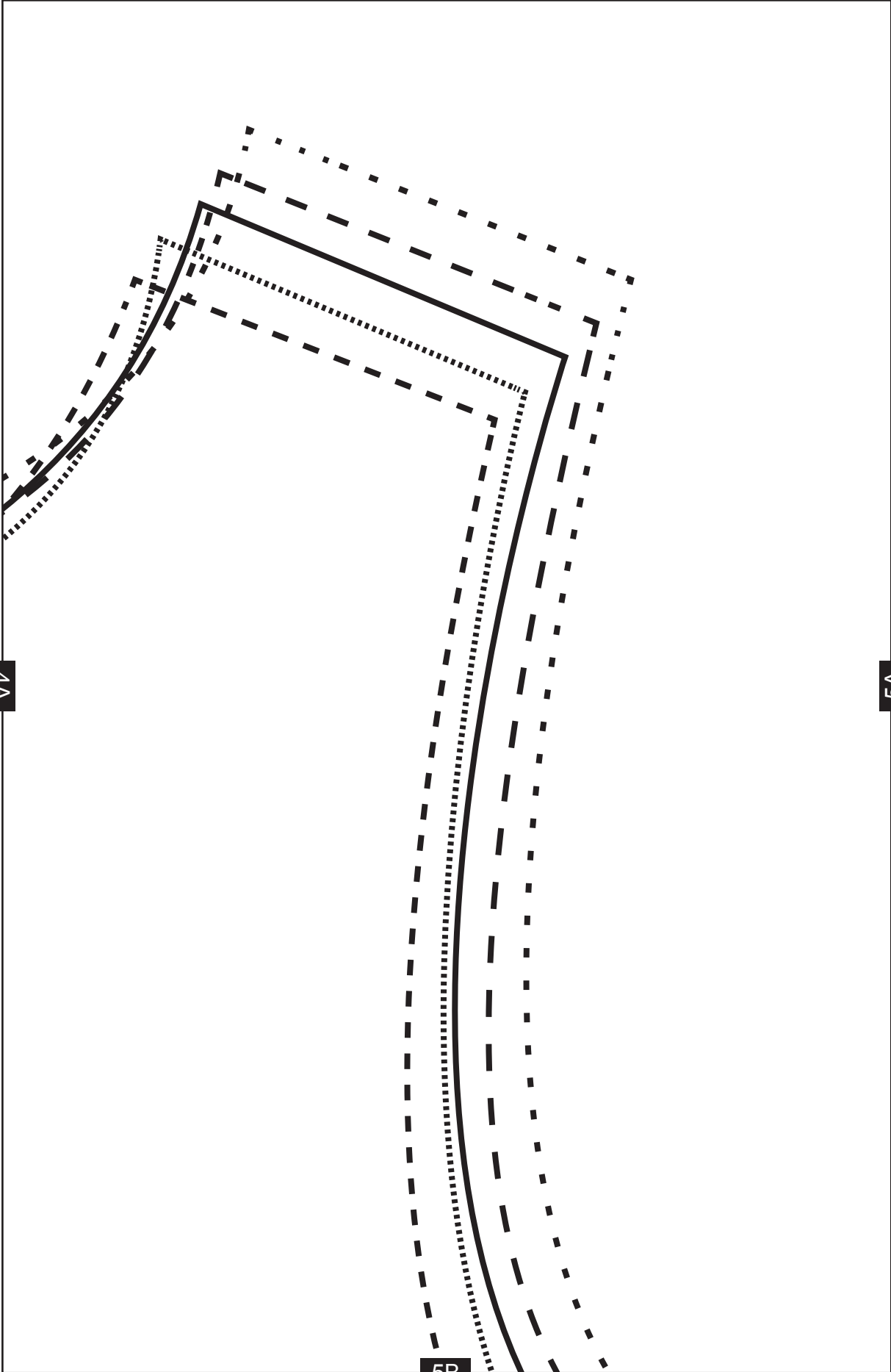




3A

4A

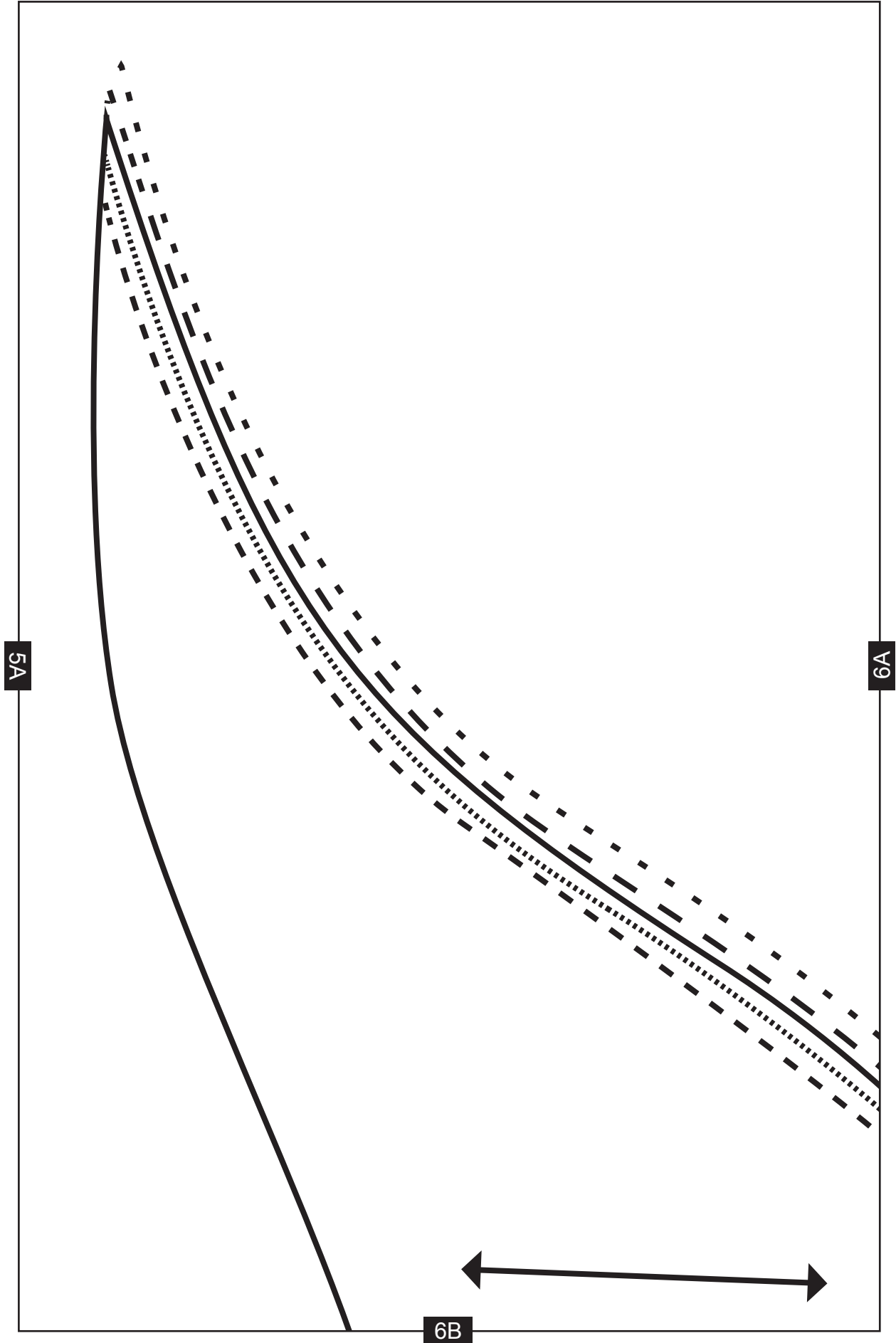
4B



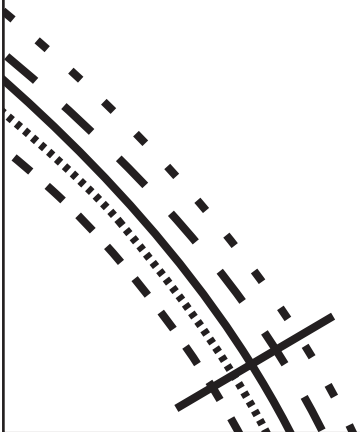
4A

5A

5B

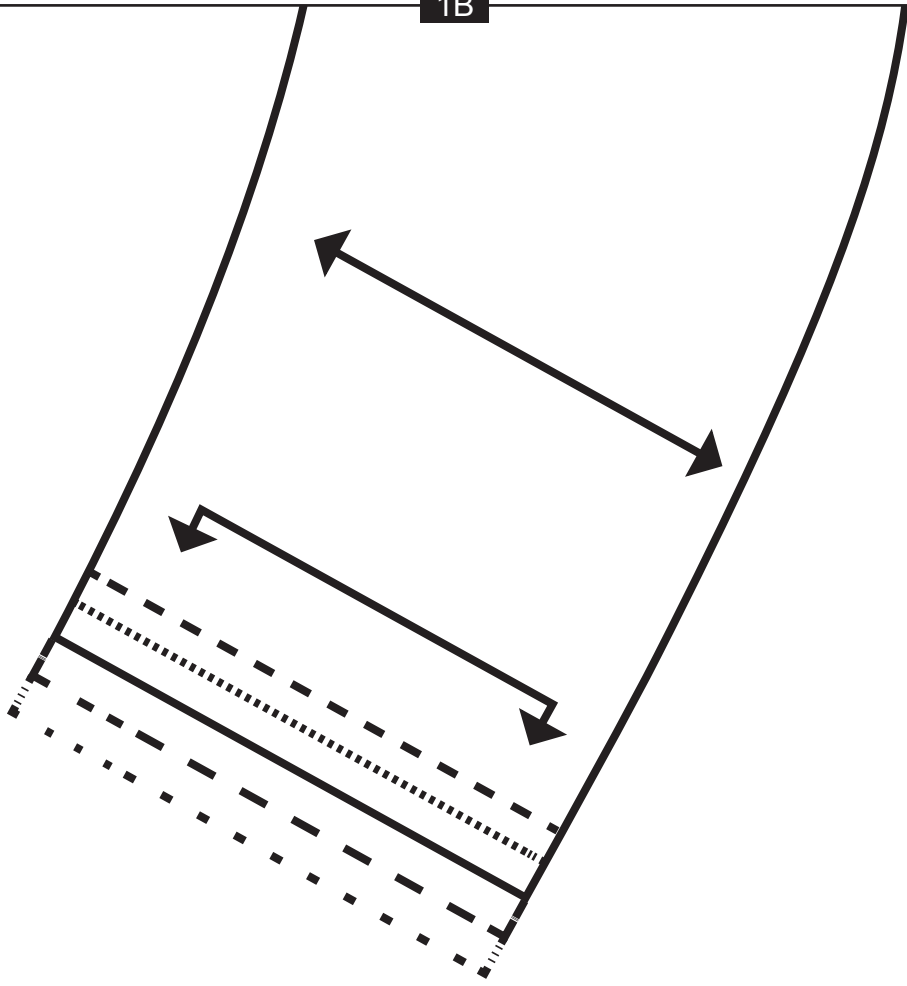


6A



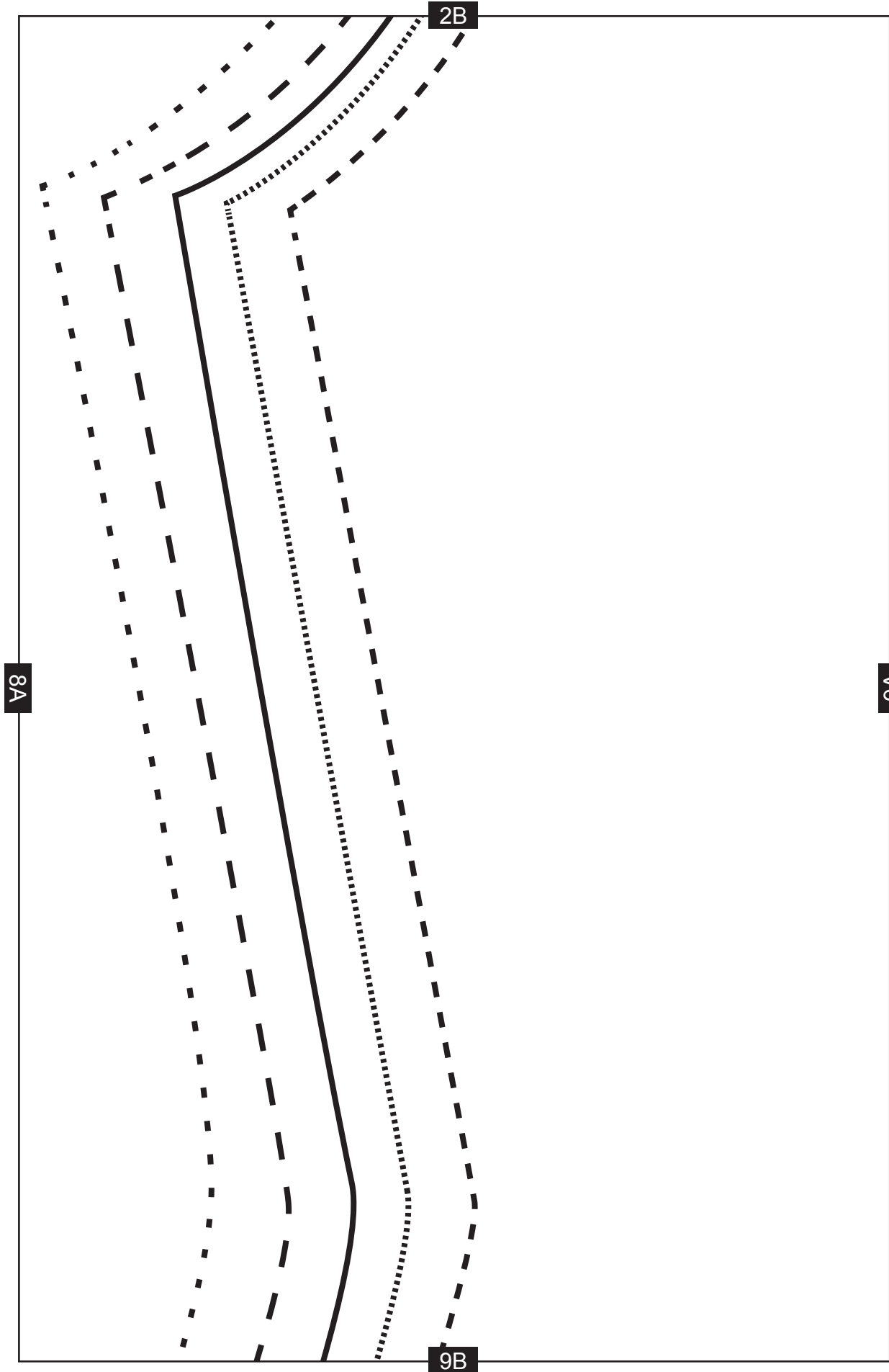
7B

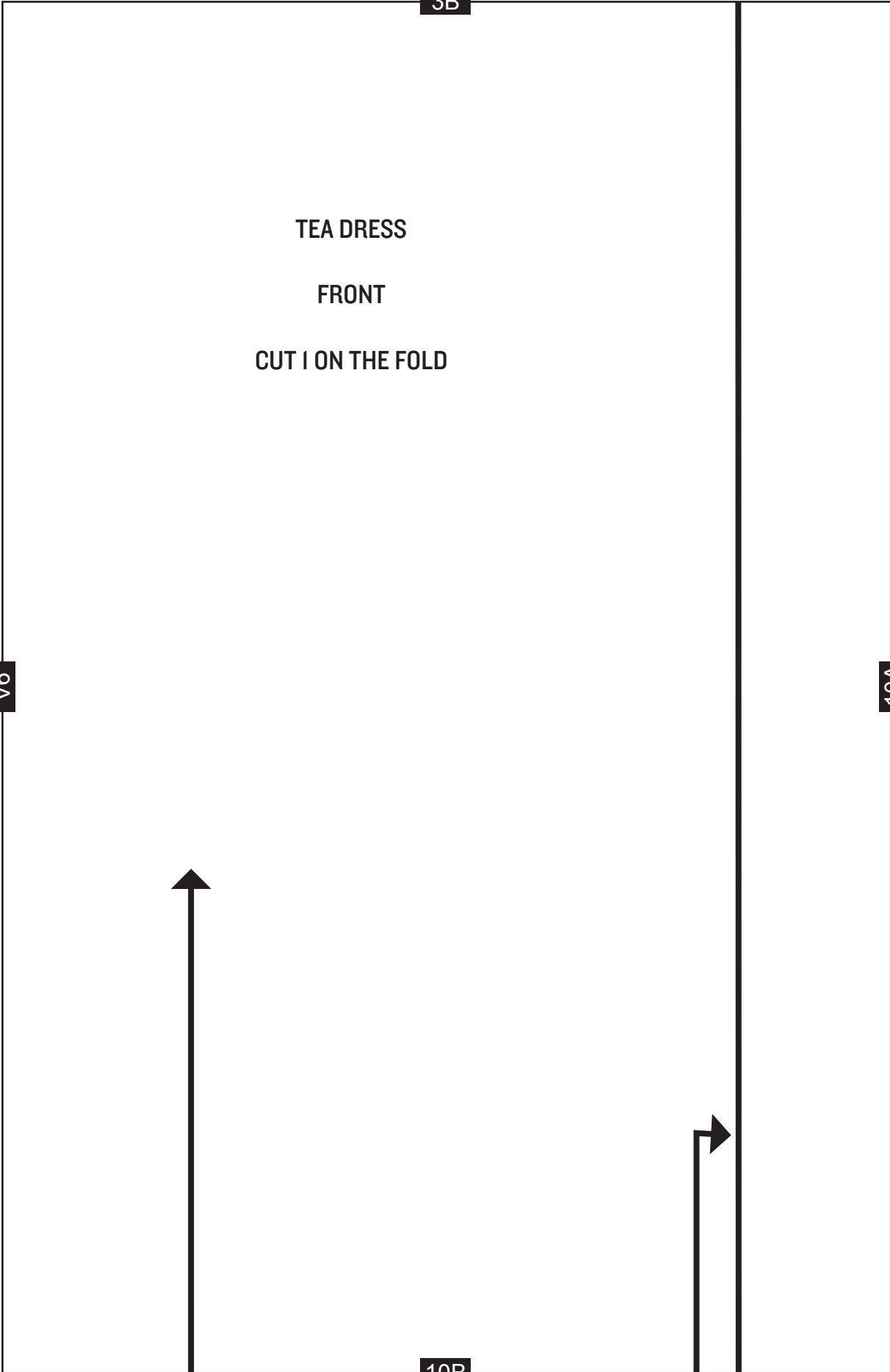
1B



8A

8B





3B

TEA DRESS

FRONT

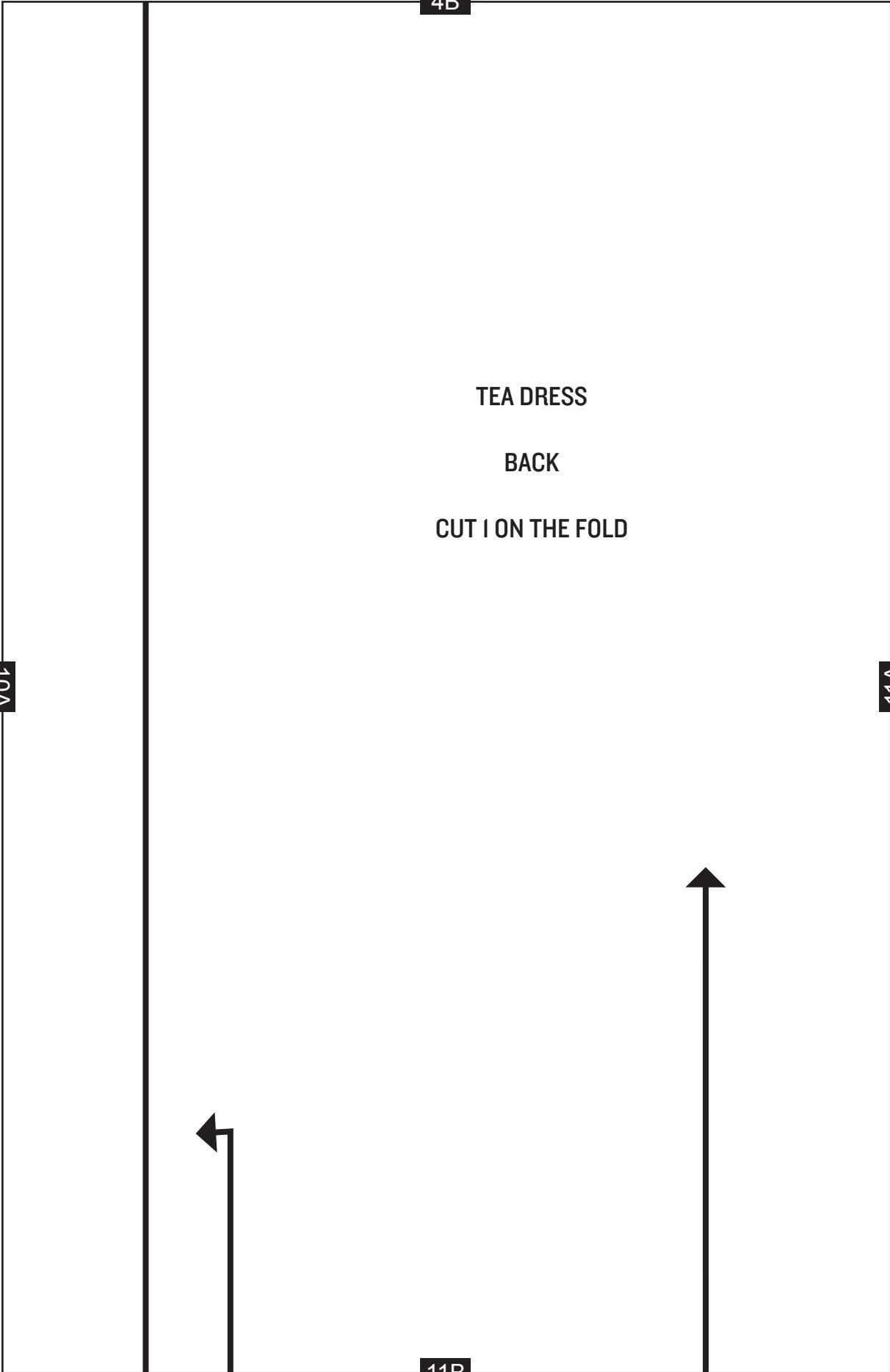
CUT 1 ON THE FOLD

9A

10A

10B





4B

TEA DRESS

BACK

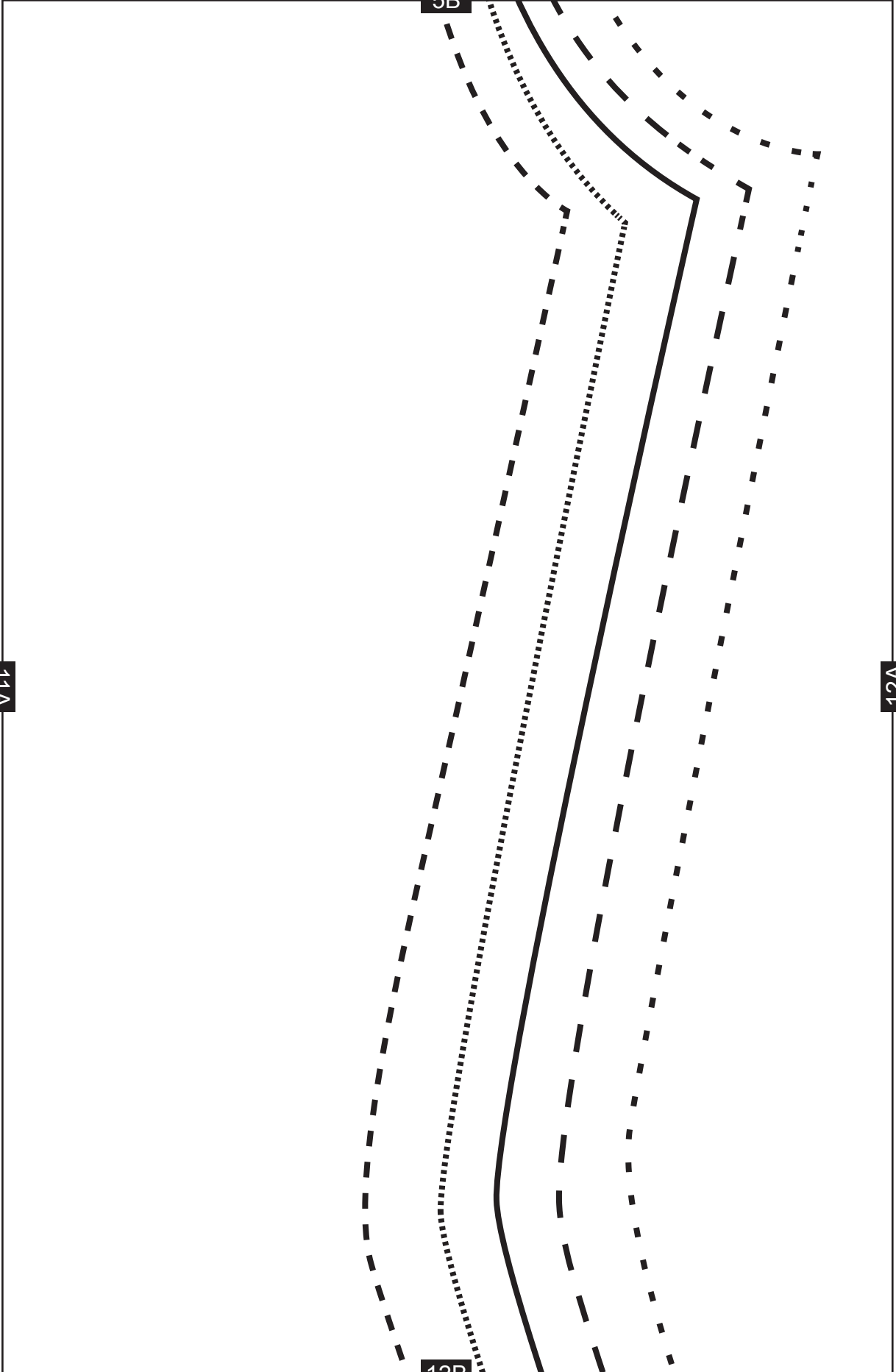
CUT 1 ON THE FOLD

10A

11A

11B

11A



5B

12A

12B

6B

TEA DRESS

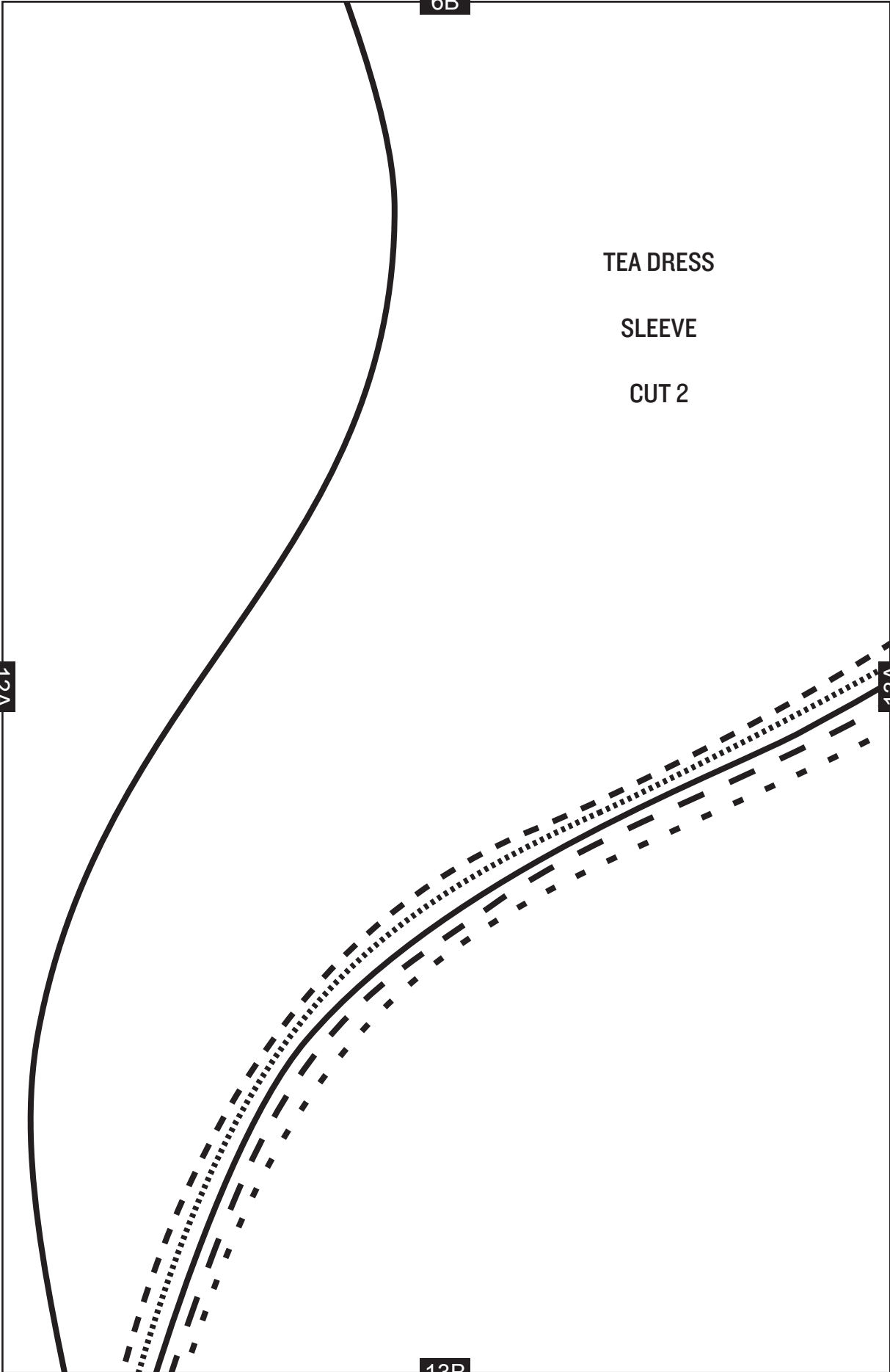
SLEEVE

CUT 2

12A

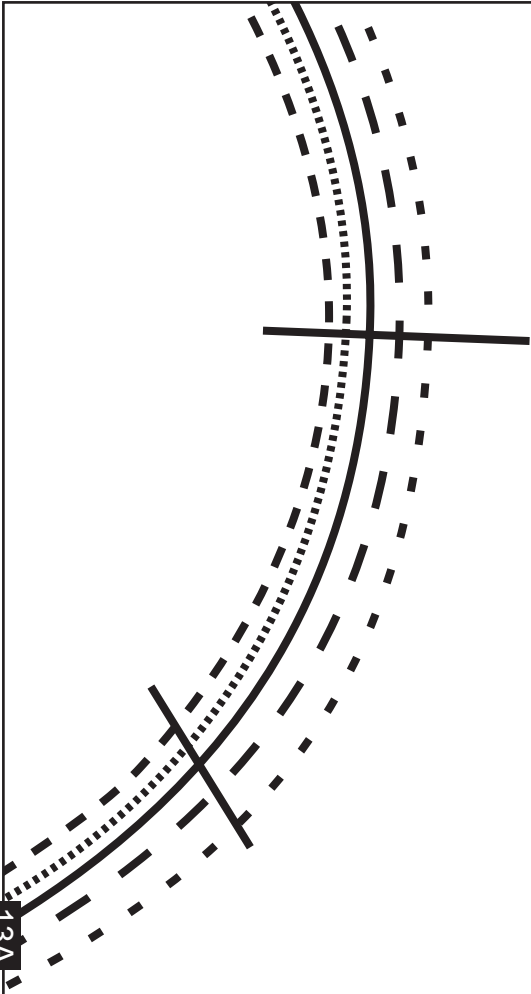
13A

13B



7B

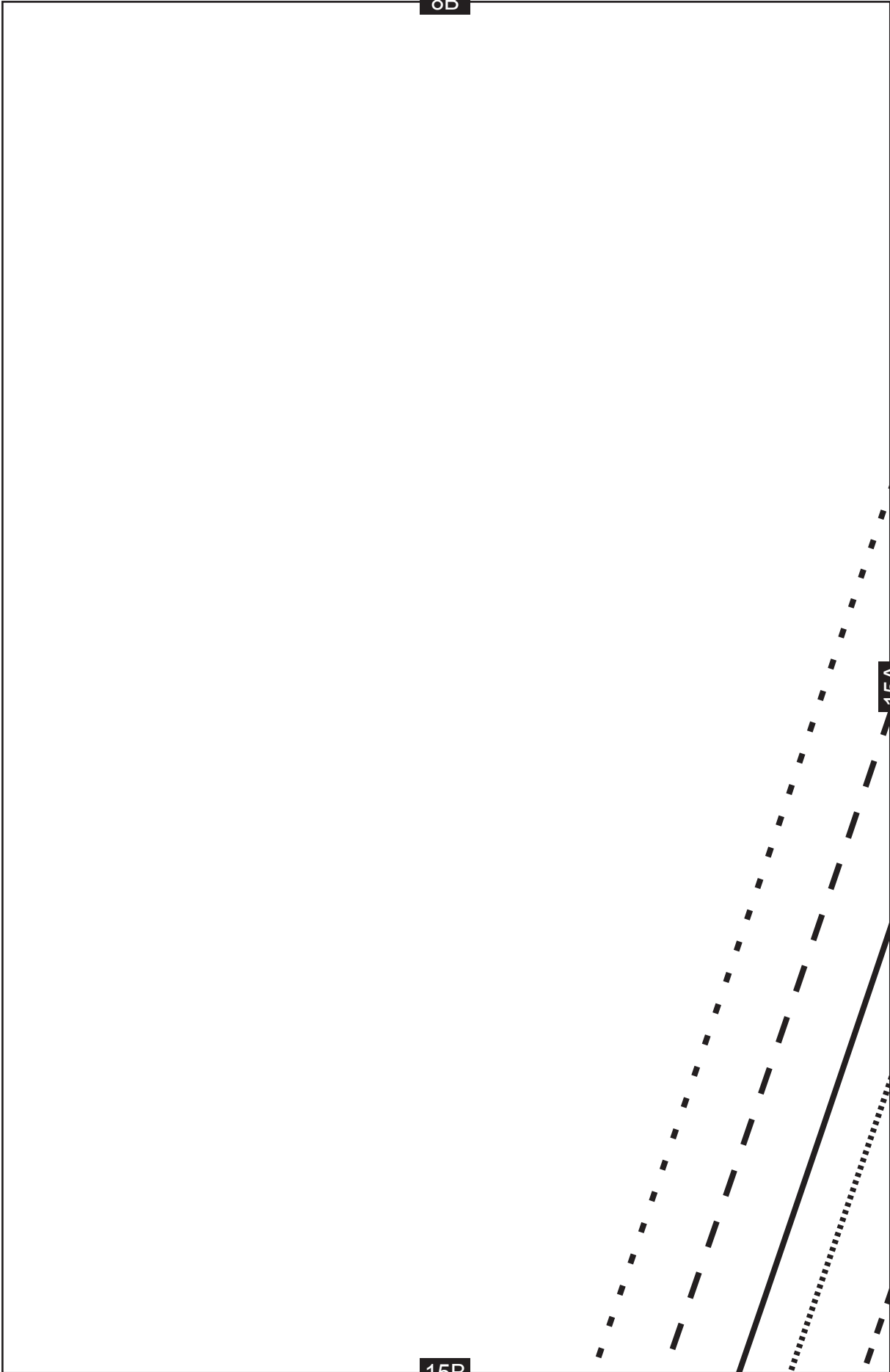
13A

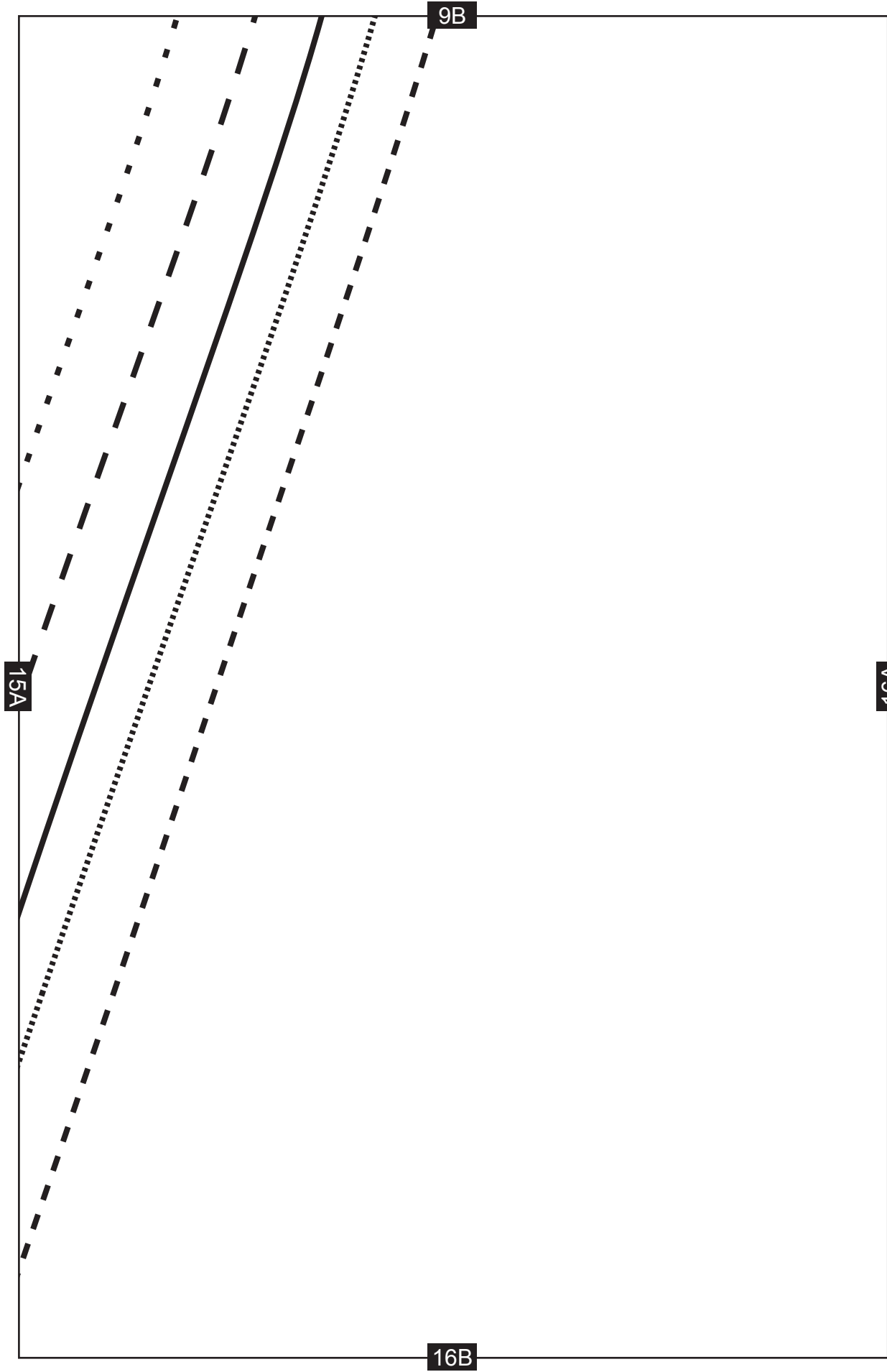


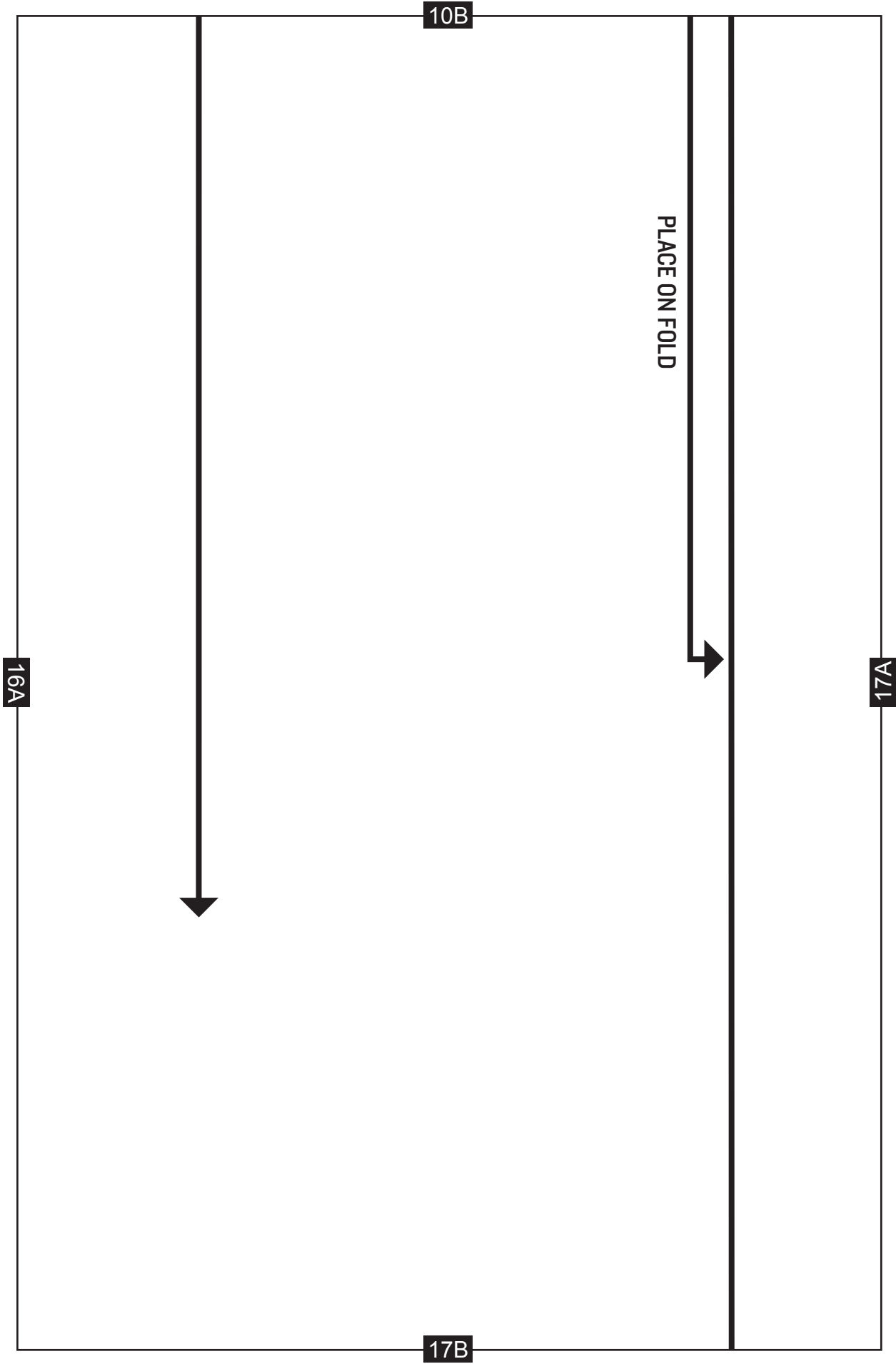
8B

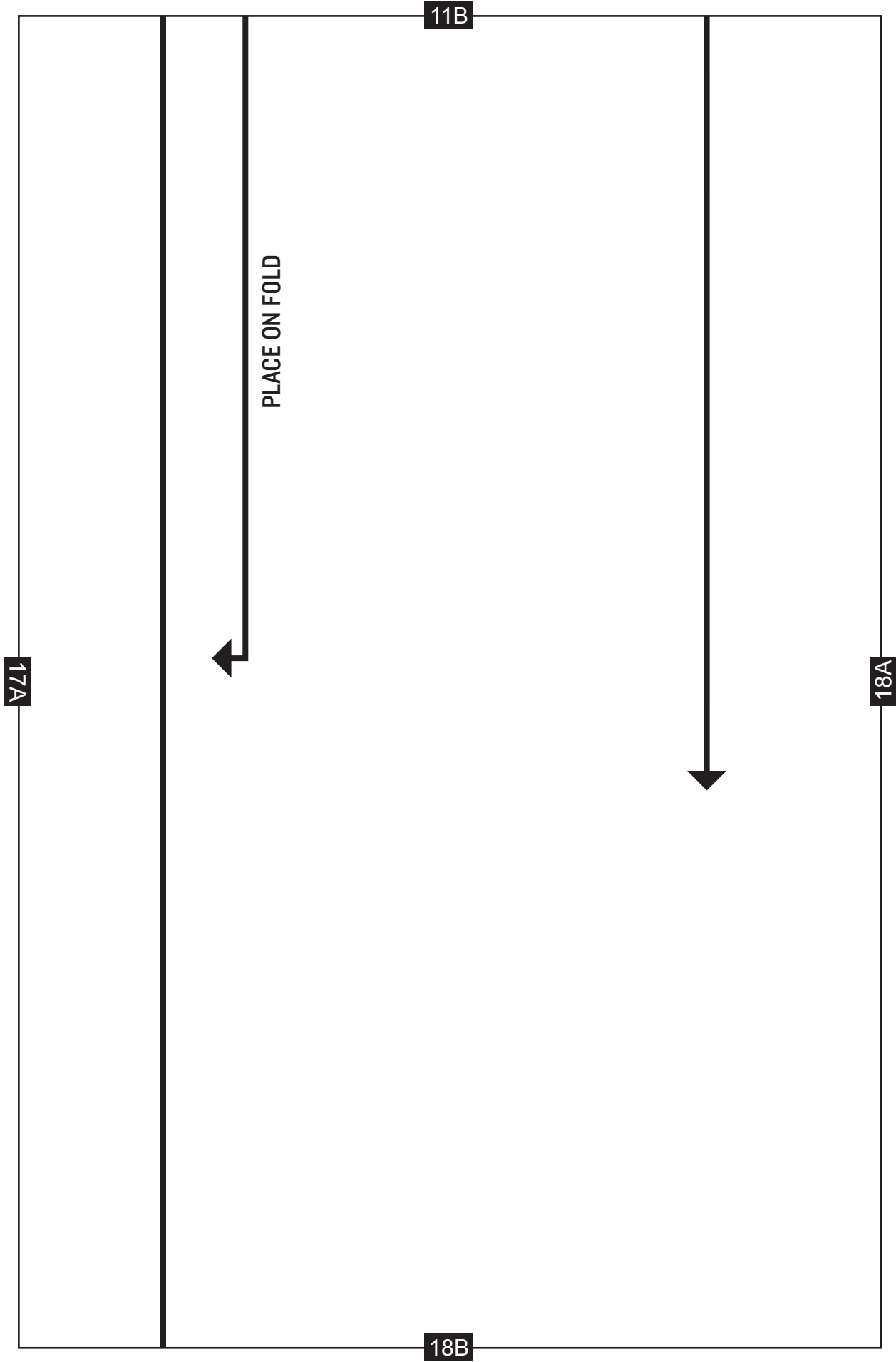
15A

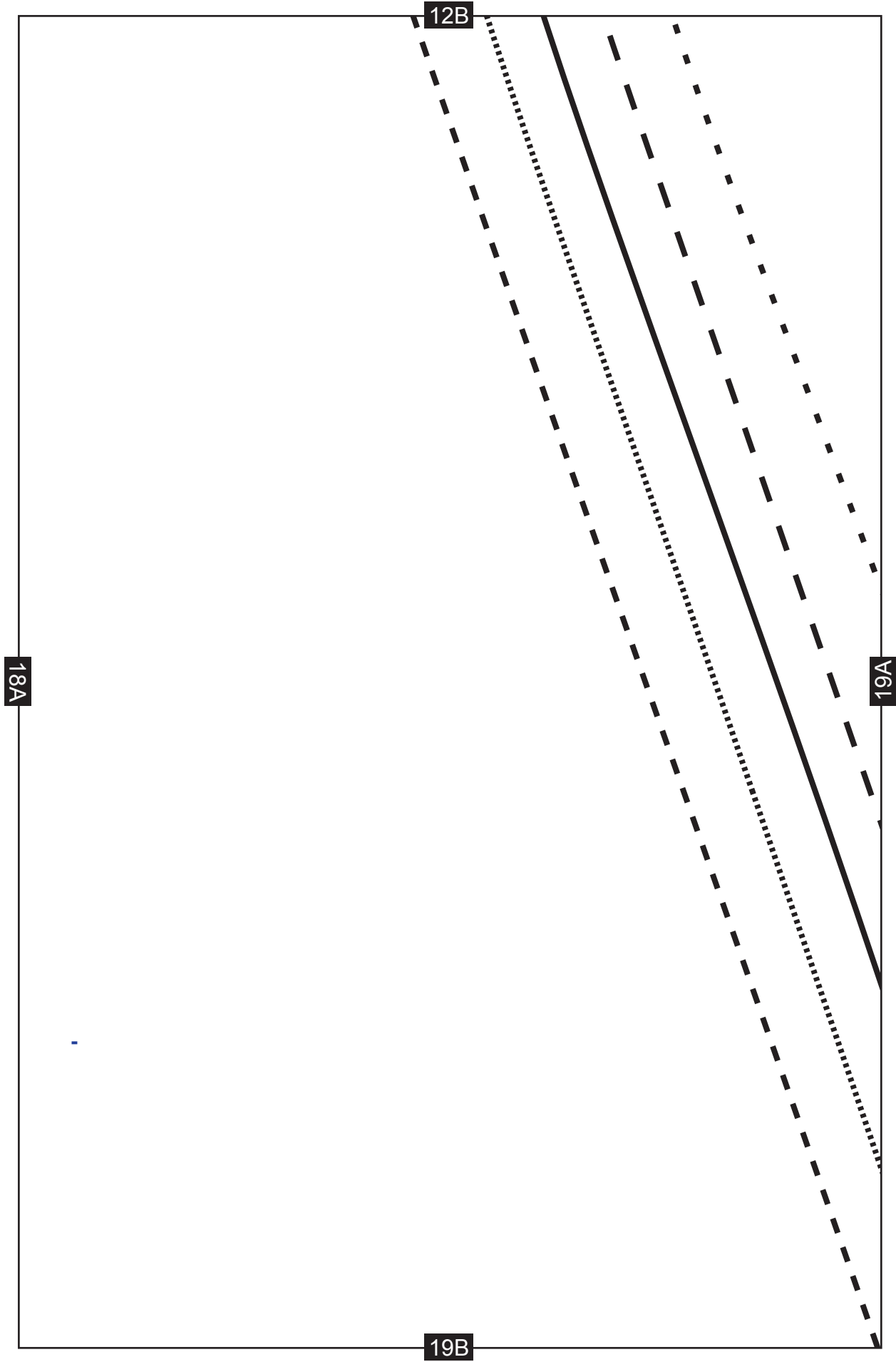
15B



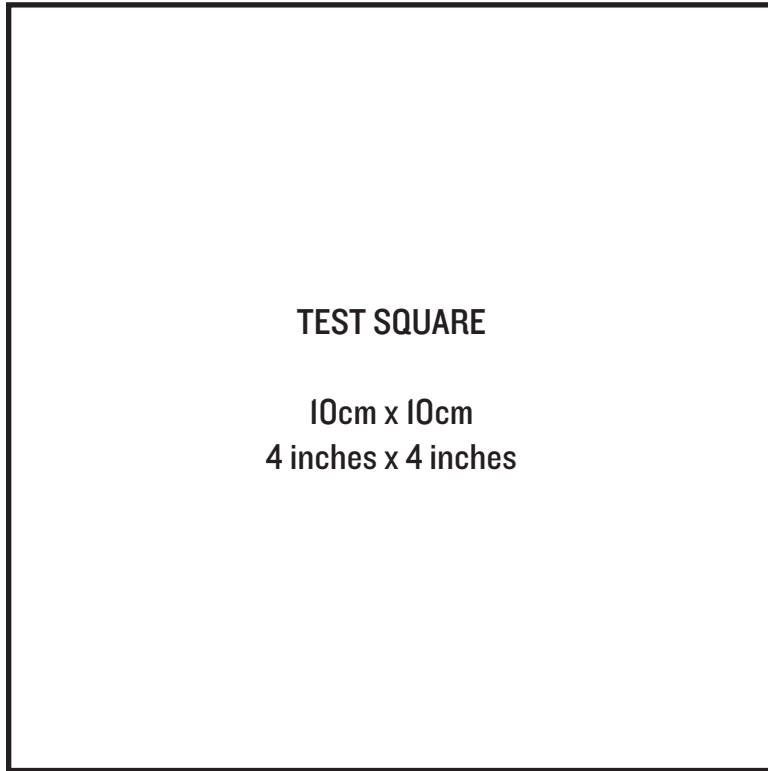








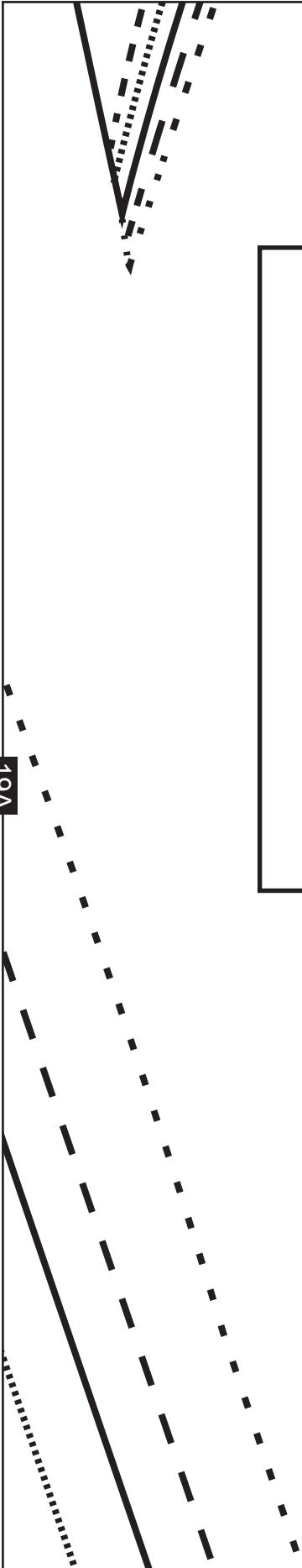
13B



TEST SQUARE

10cm x 10cm
4 inches x 4 inches

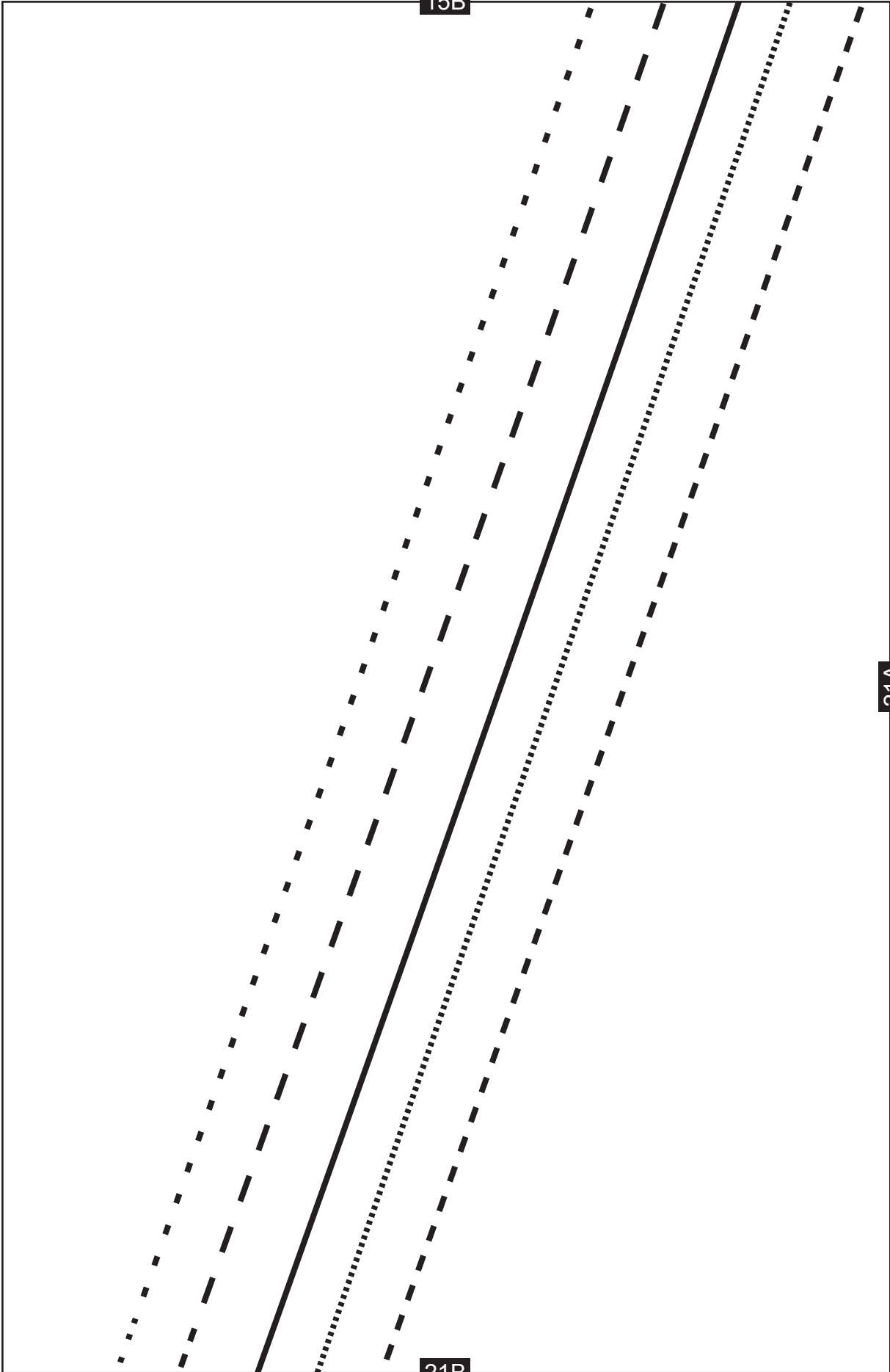
19A



- 8 - - - - -
- 10
- 12 —————
- 14 - - - - -
- 16

20B

15B



21B

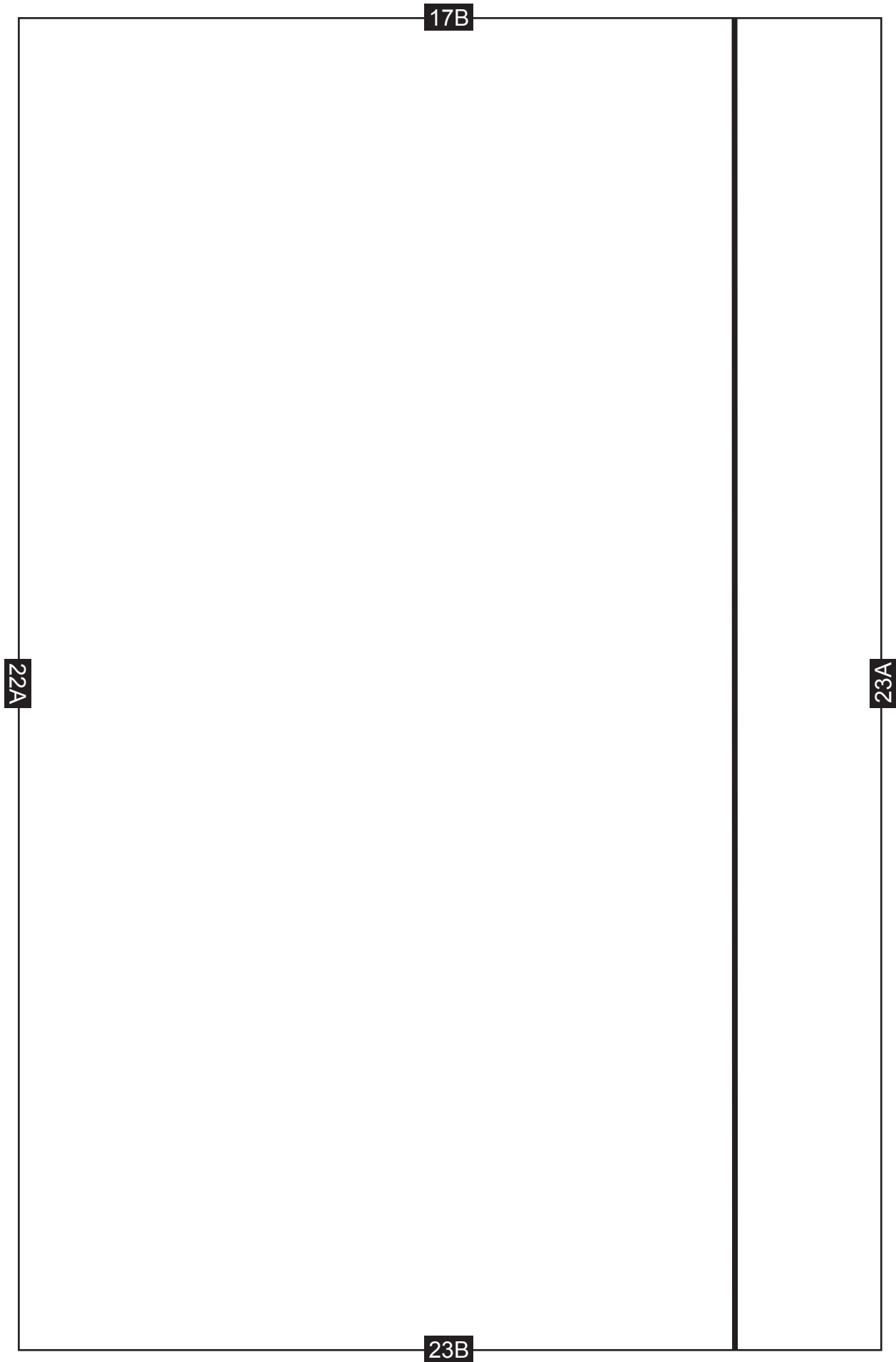
21A

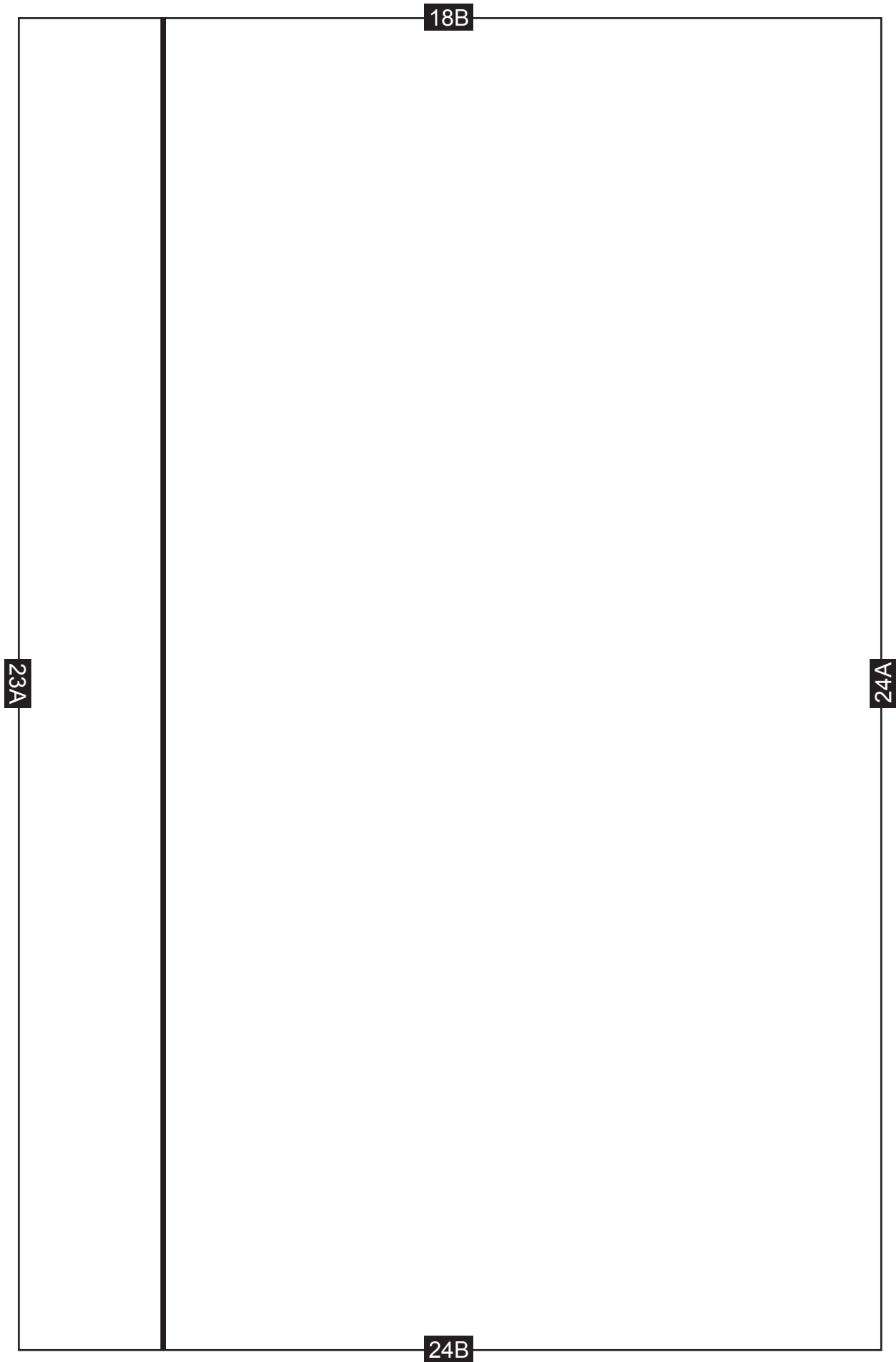
16B

21A

22A

22B



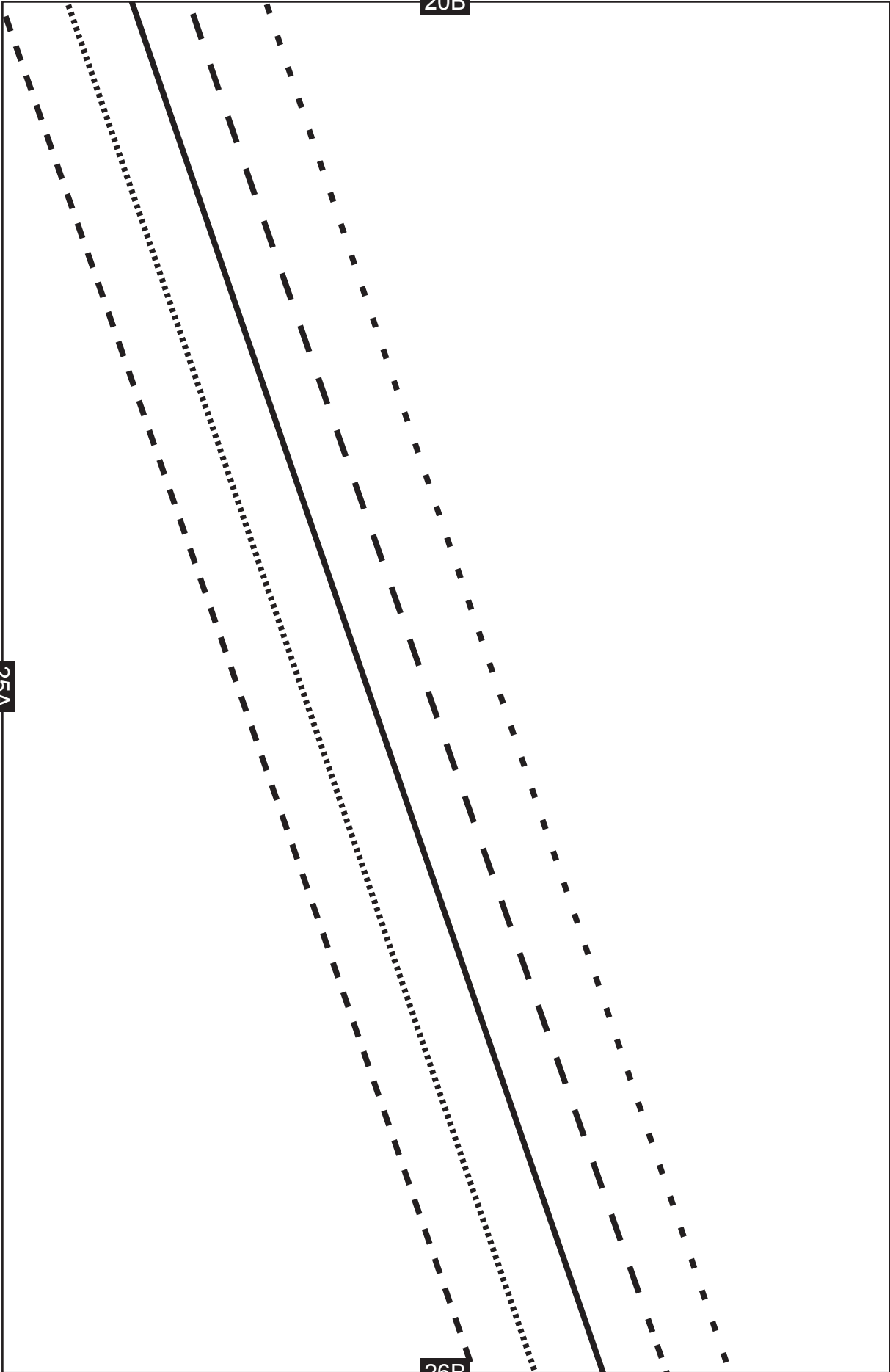


19B

24A

25A

25B

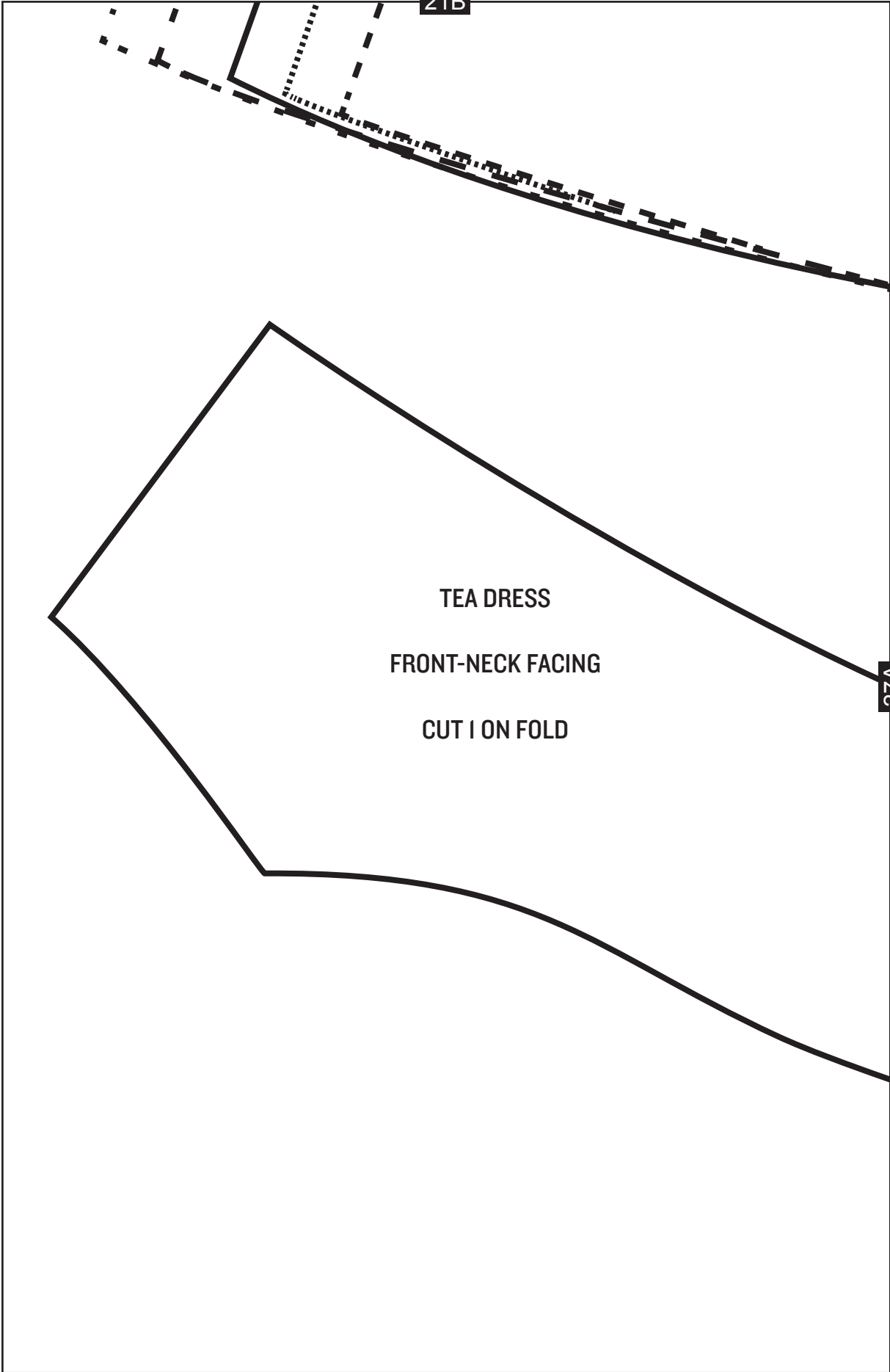


20B

25A

26B

21B



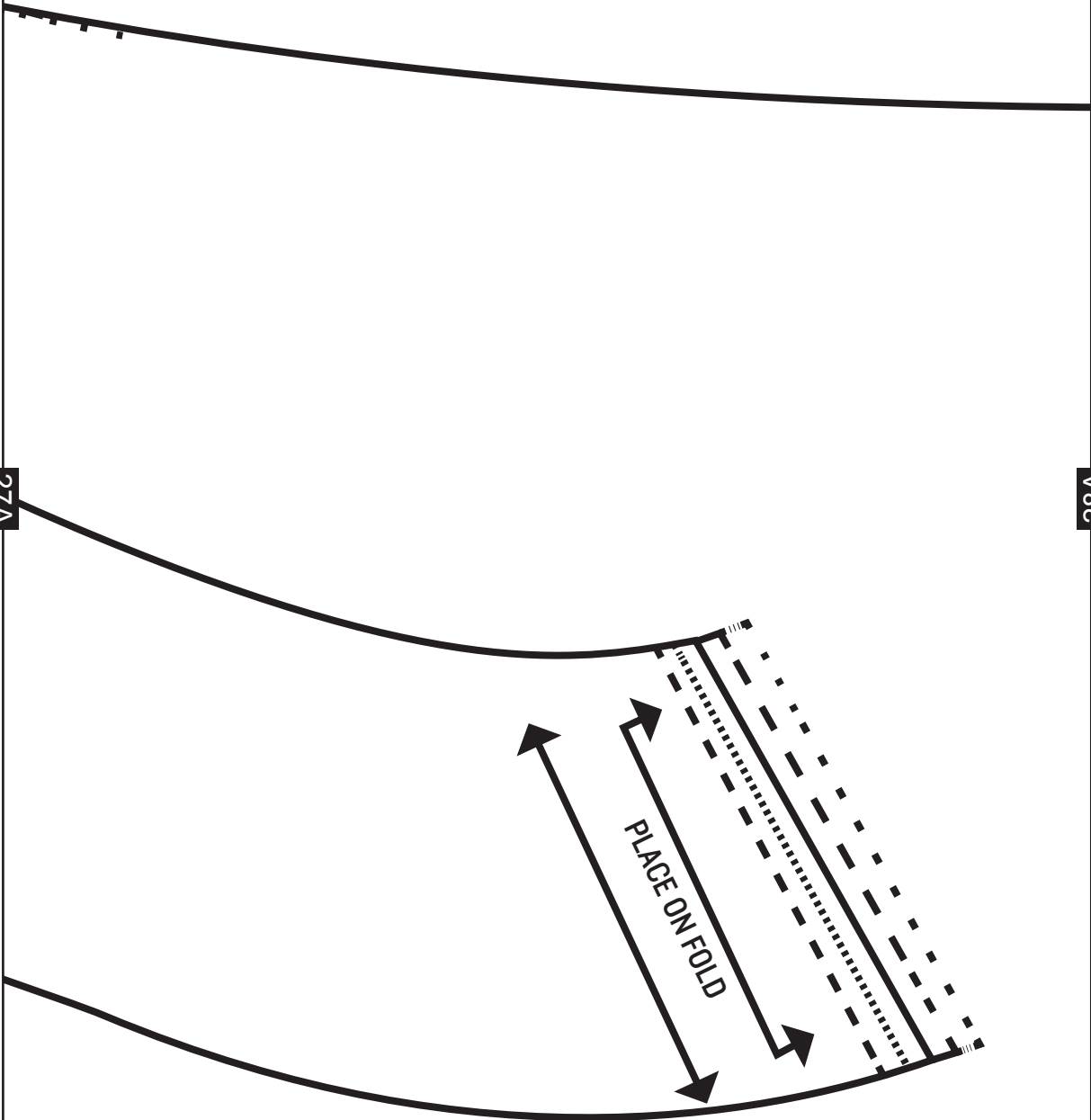
TEA DRESS
FRONT-NECK FACING
CUT 1 ON FOLD

27A

22B

27A

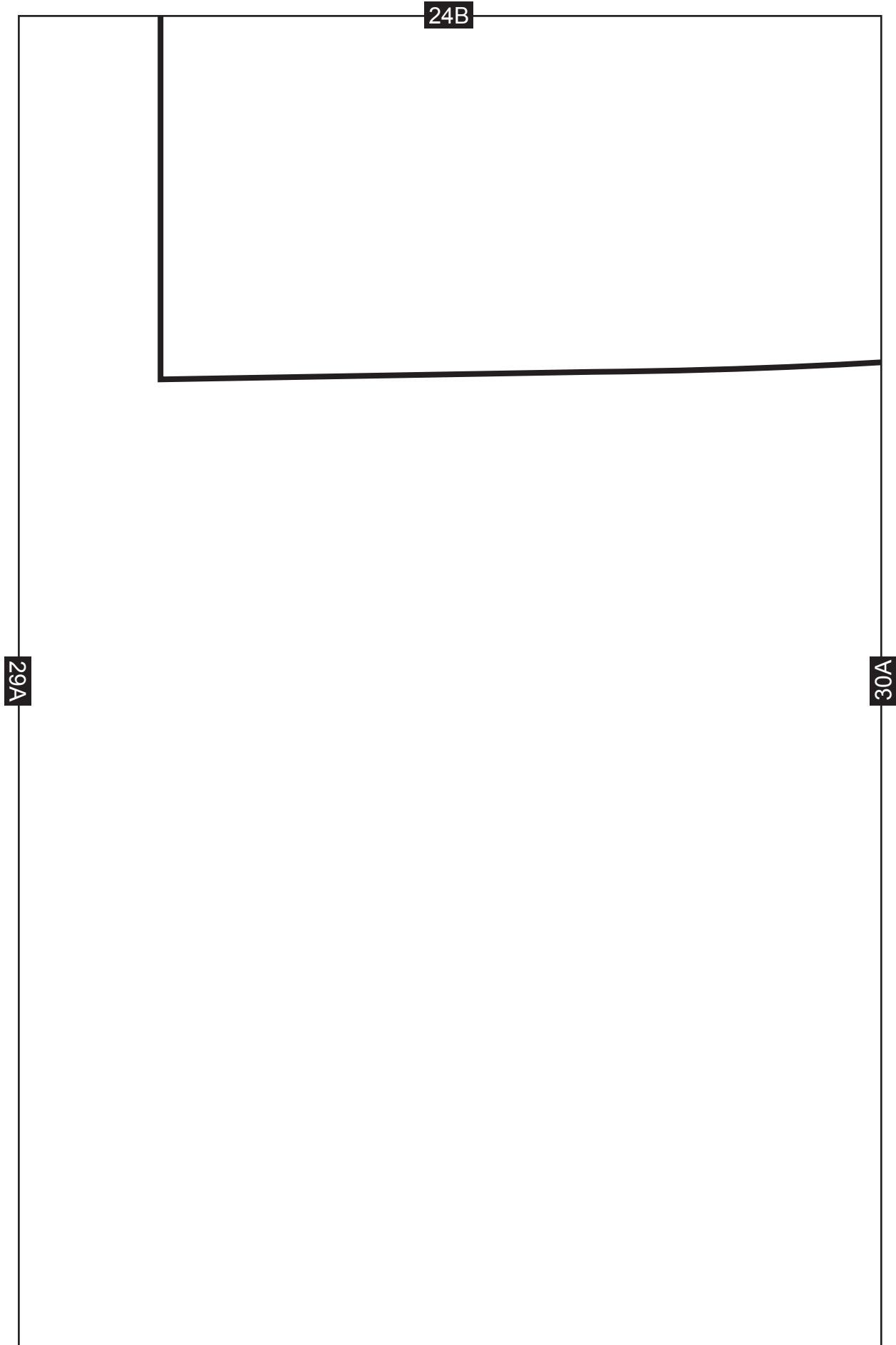
28A



23B

28A

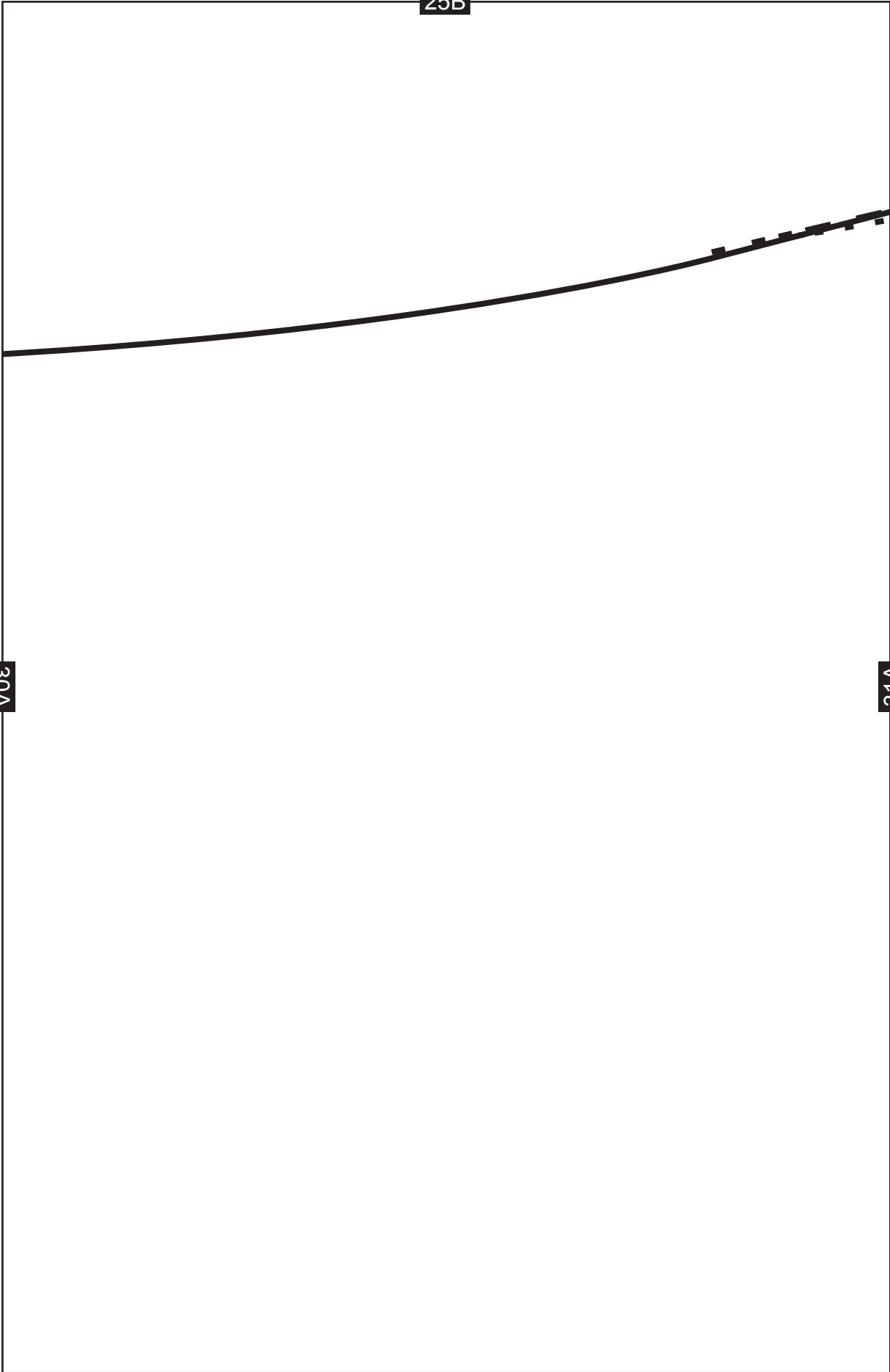
29A



25B

30A

31A



26B

31A

