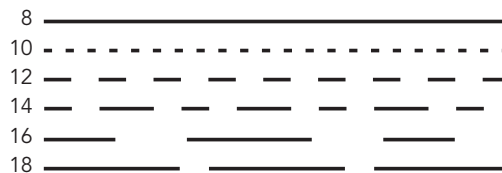


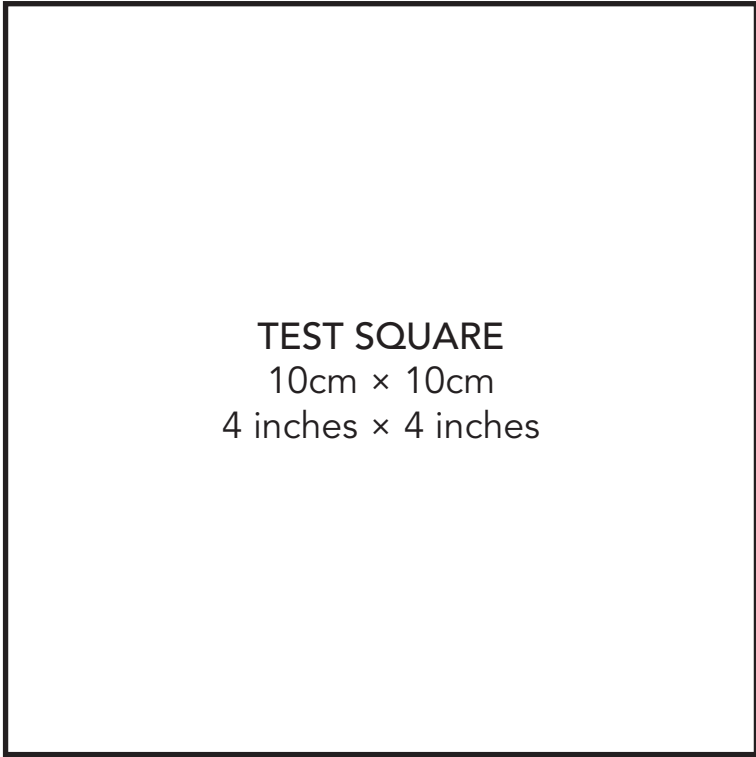
THE GREAT BRITISH *Sewing Bee*

1960S Coat pattern
Project design © Love Productions 2013
This design is protected by copyright
and must not be made for resale.



1A

1B

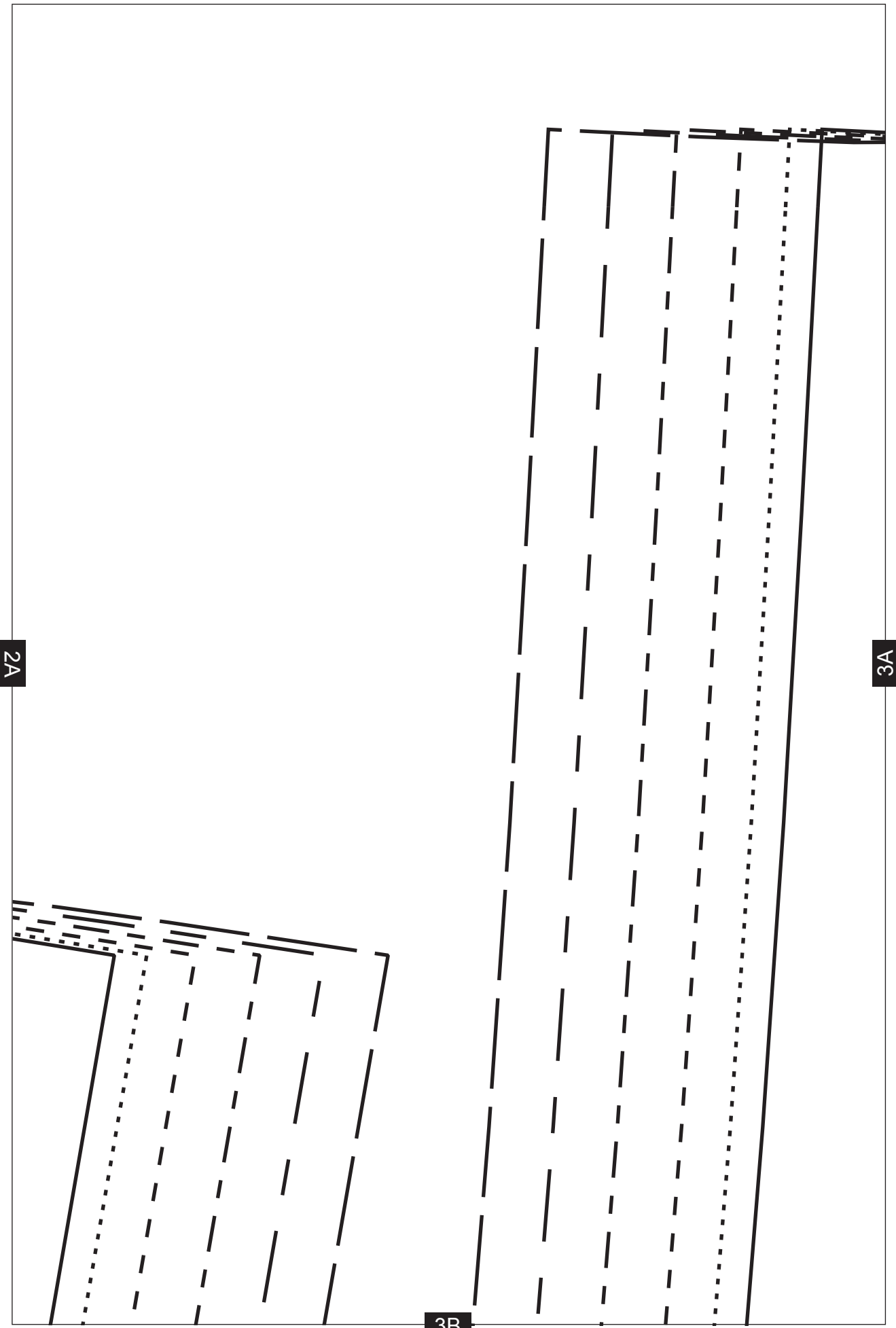


1A

2A



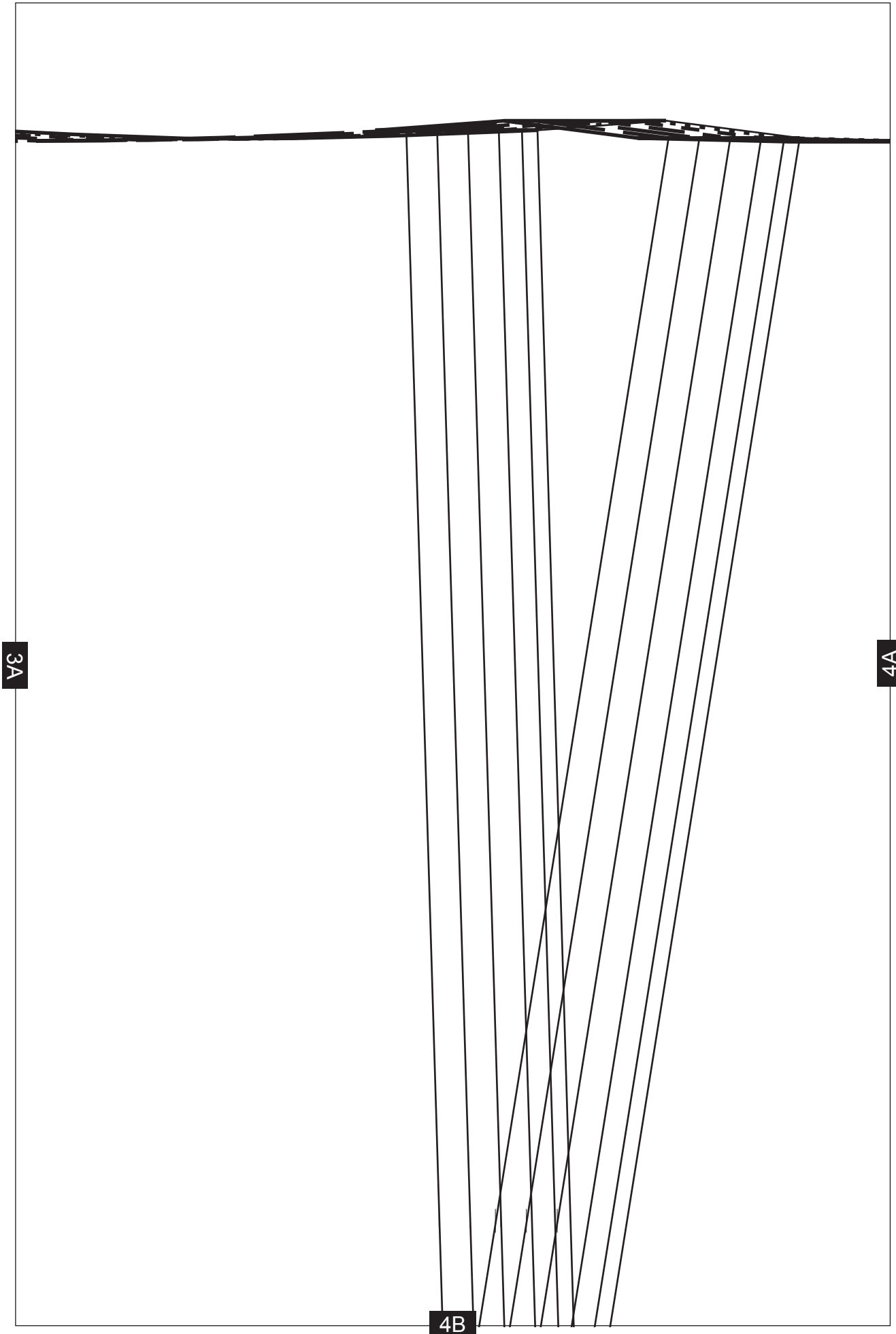
2B

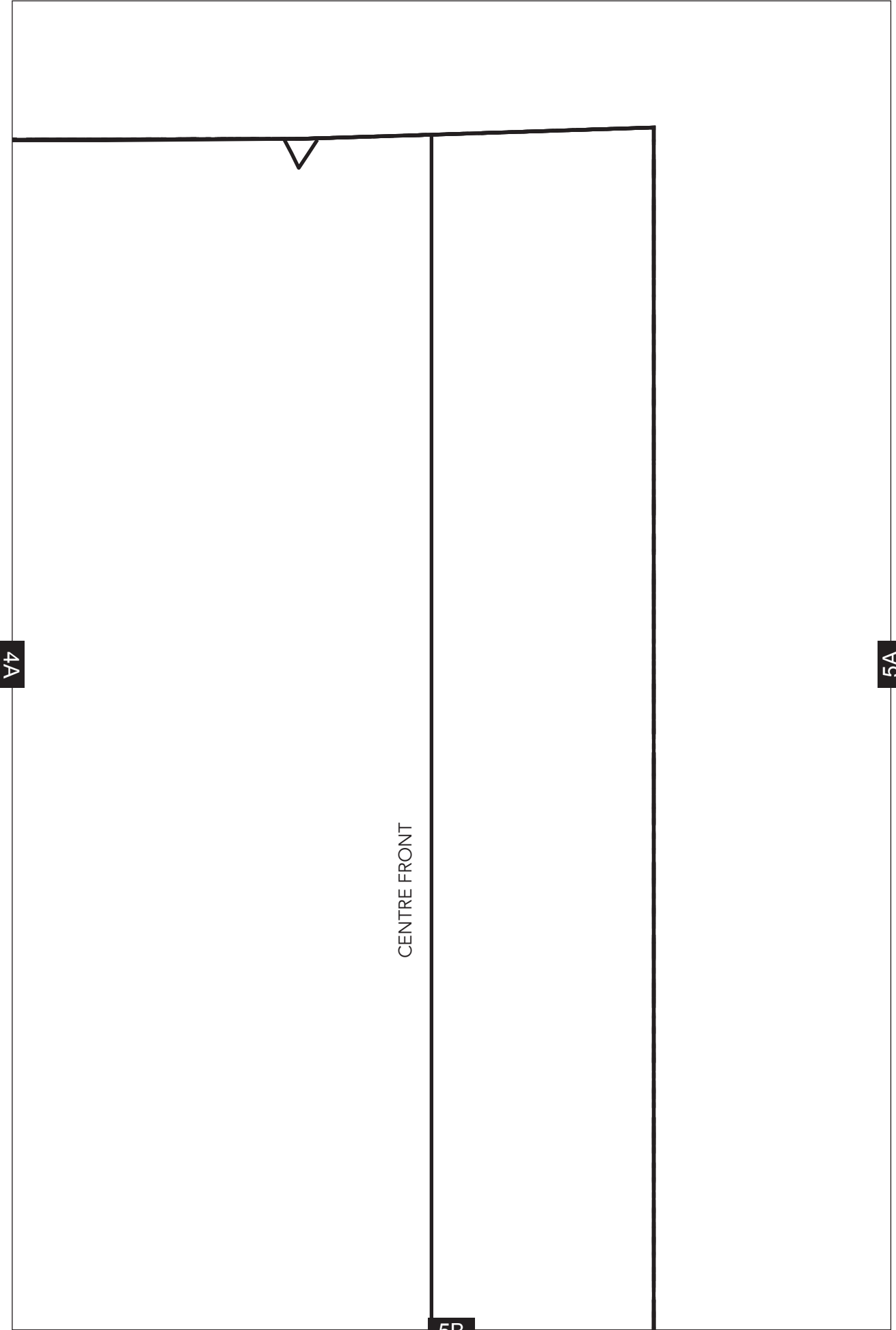


2A

3A

3B



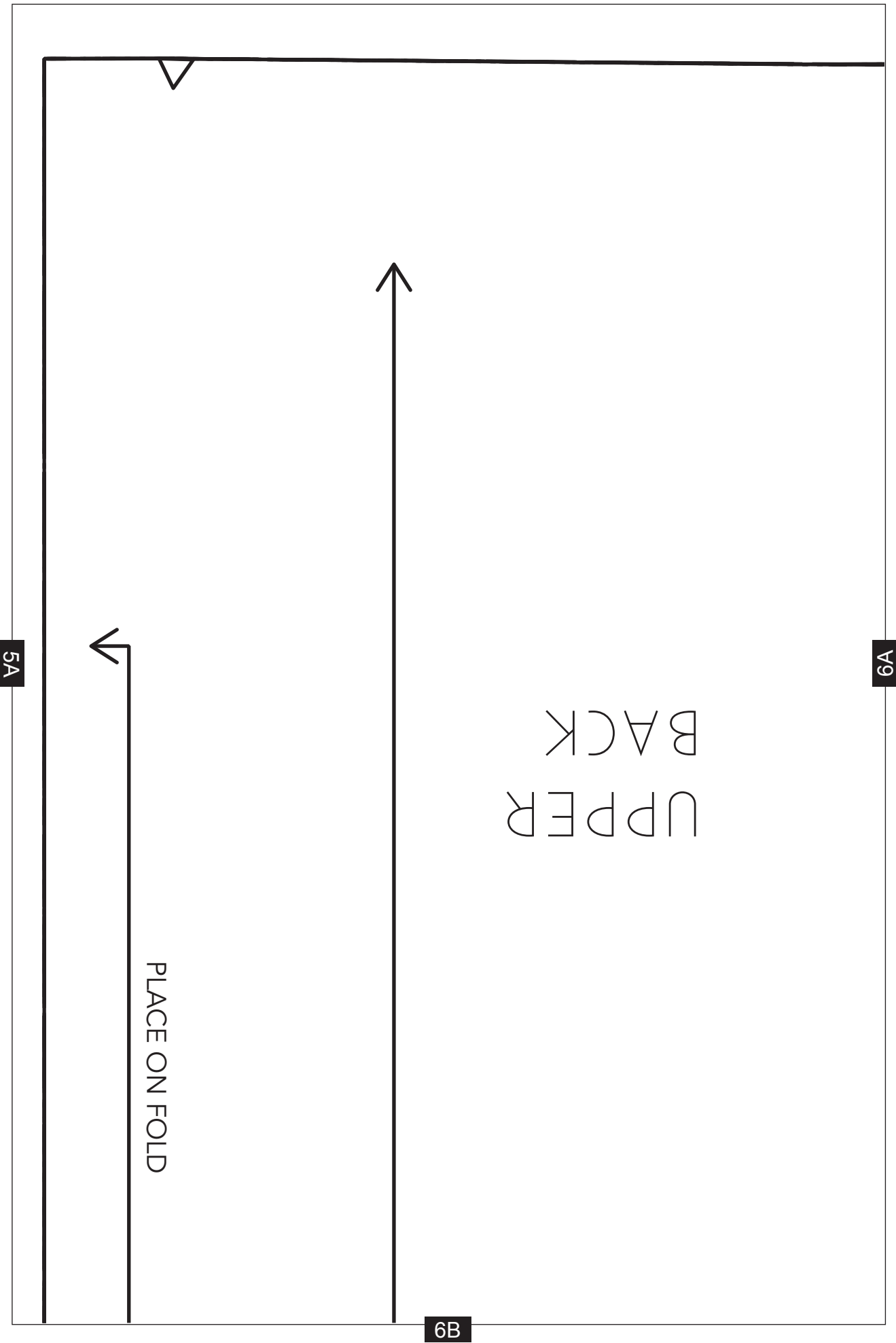


4A

5A

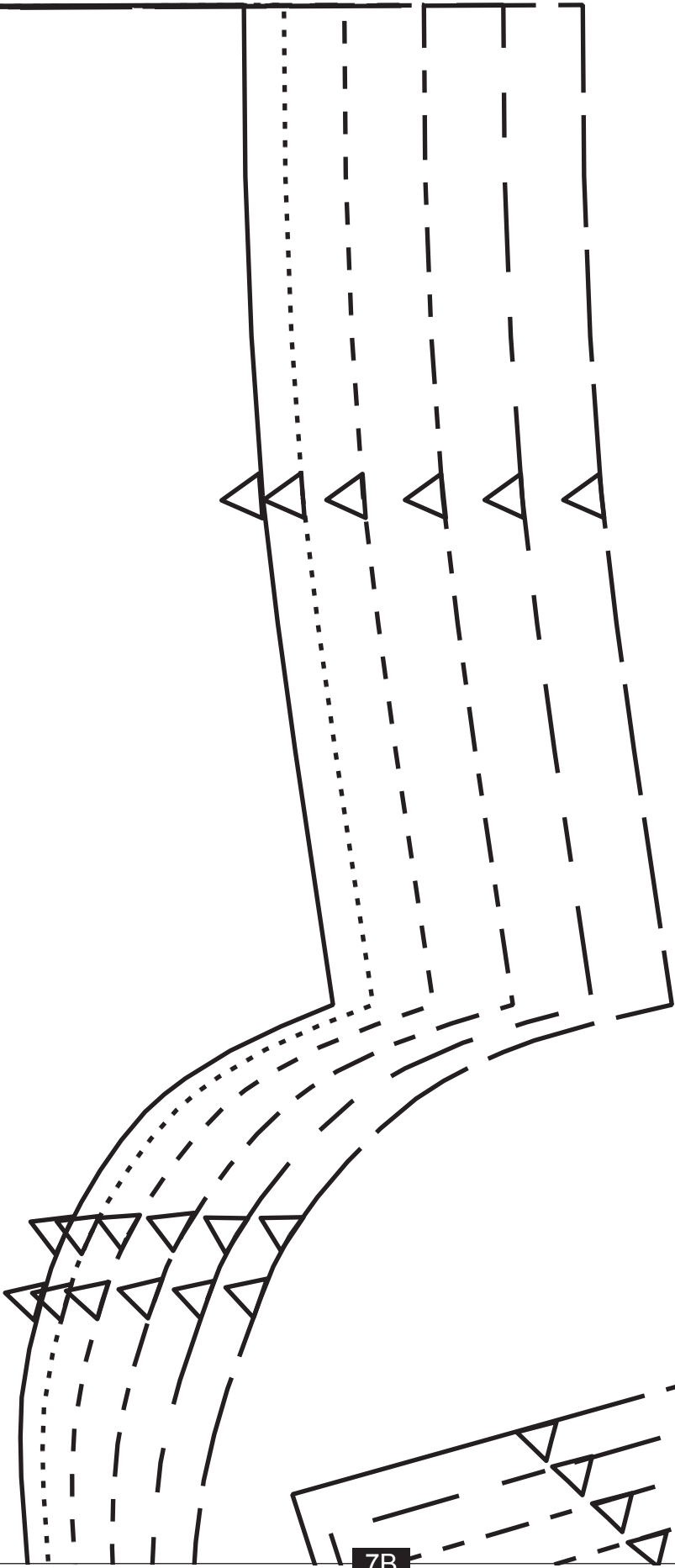
CENTRE FRONT

5B

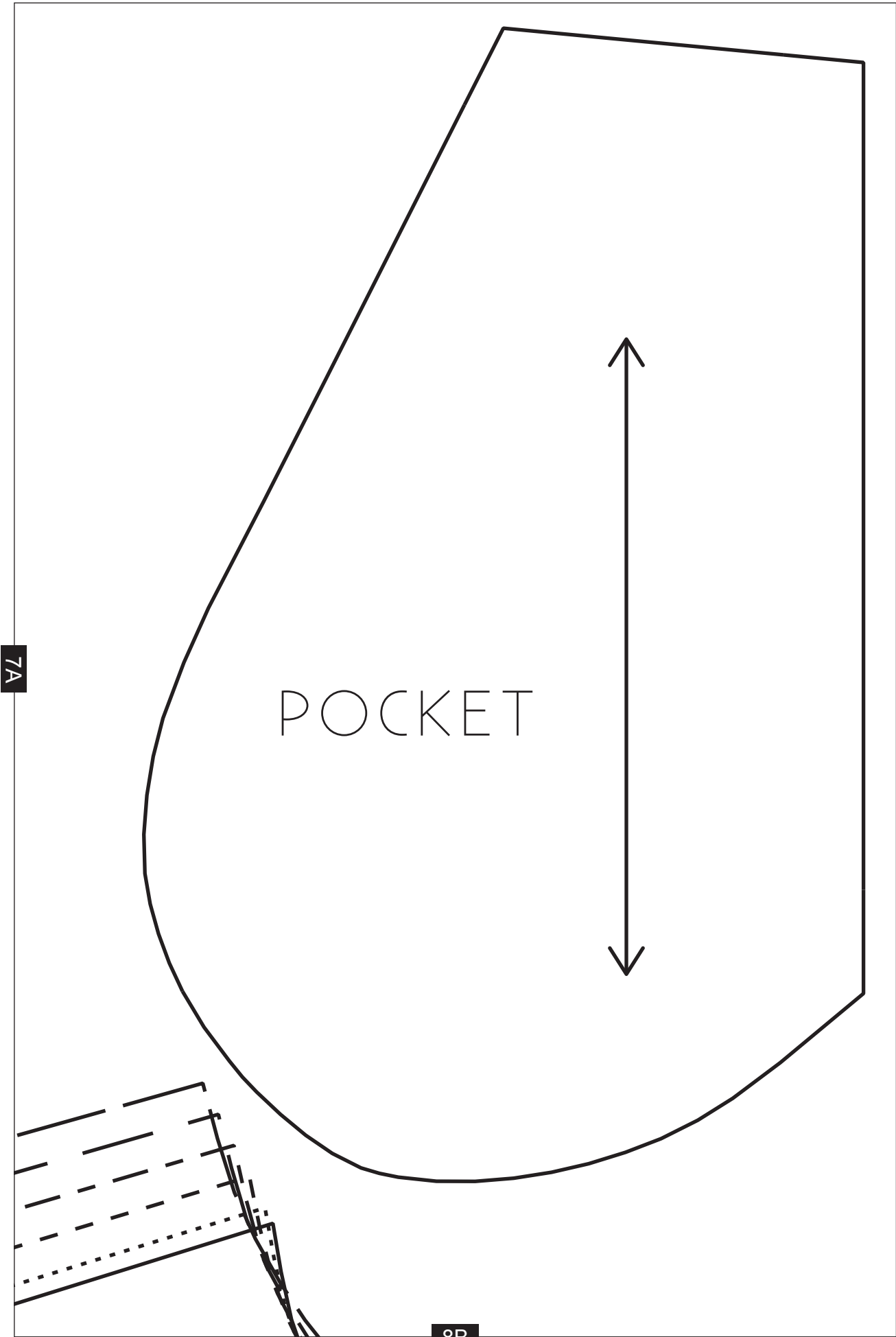


6A

7A



7B



7A

POCKET

8B

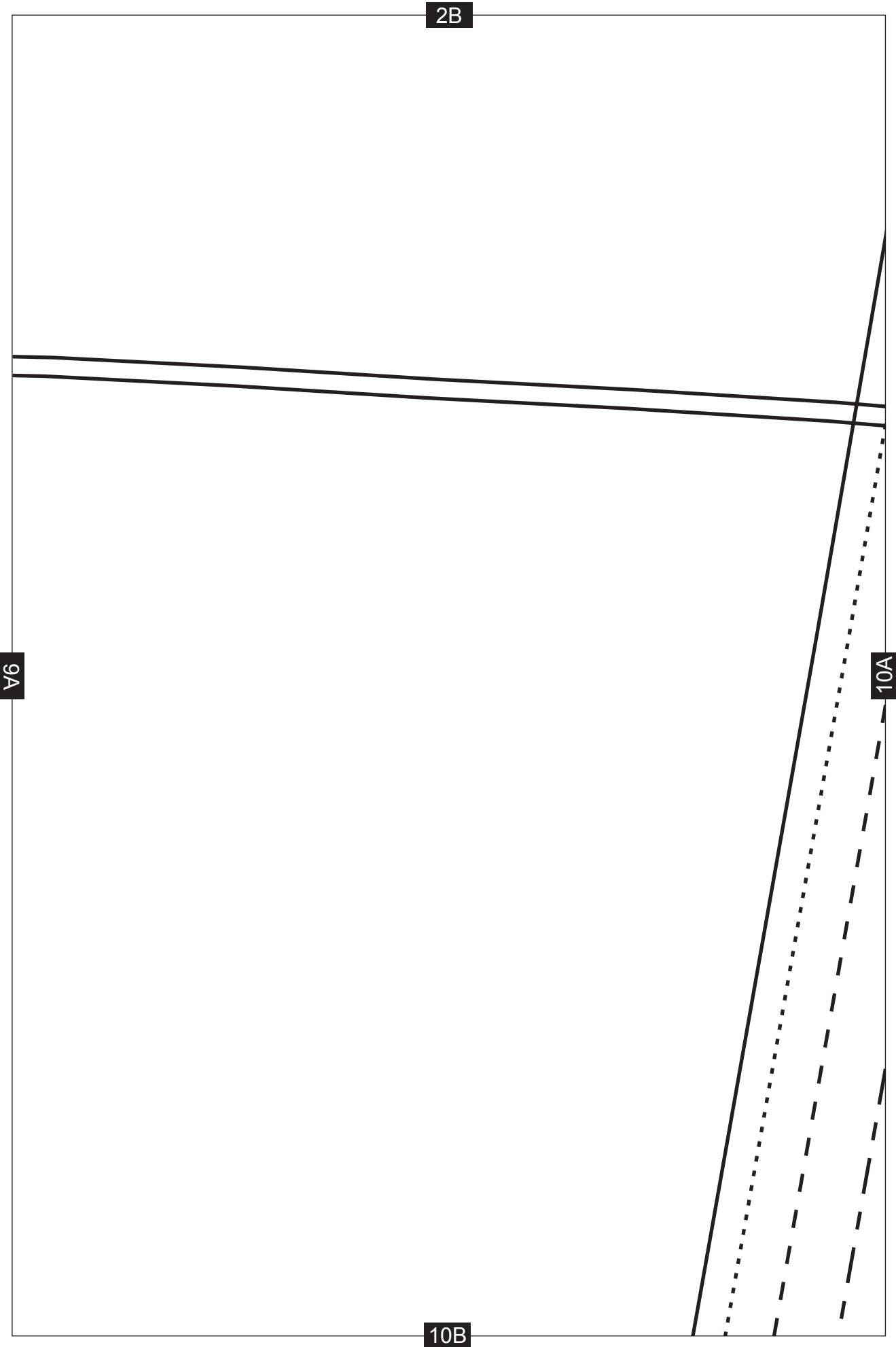
1B

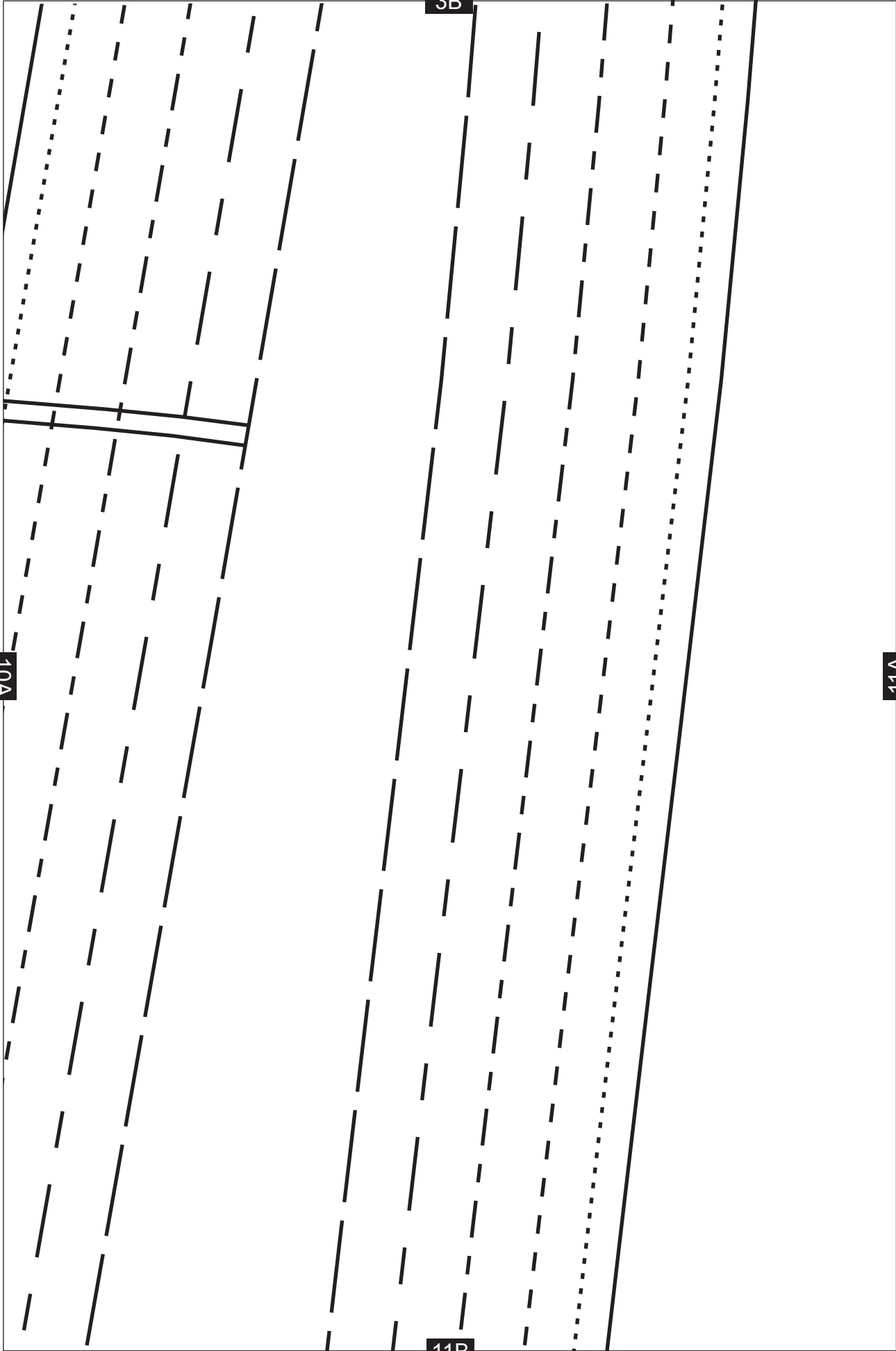
LENGTHEN OR SHORTEN HERE

9A



9B





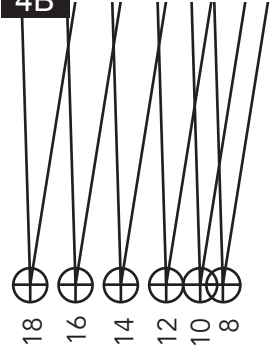
10A

3B

11B

11A

4B

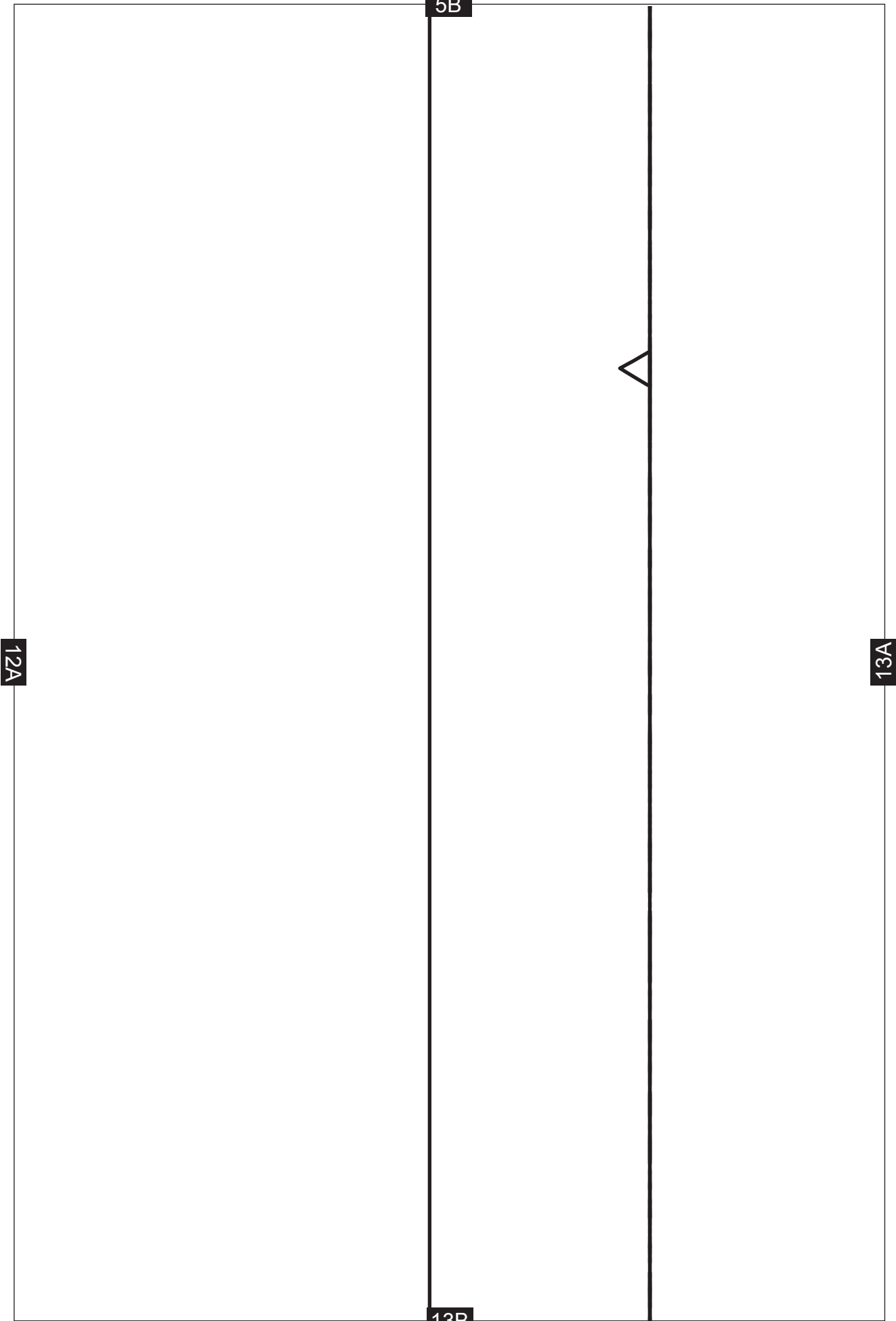


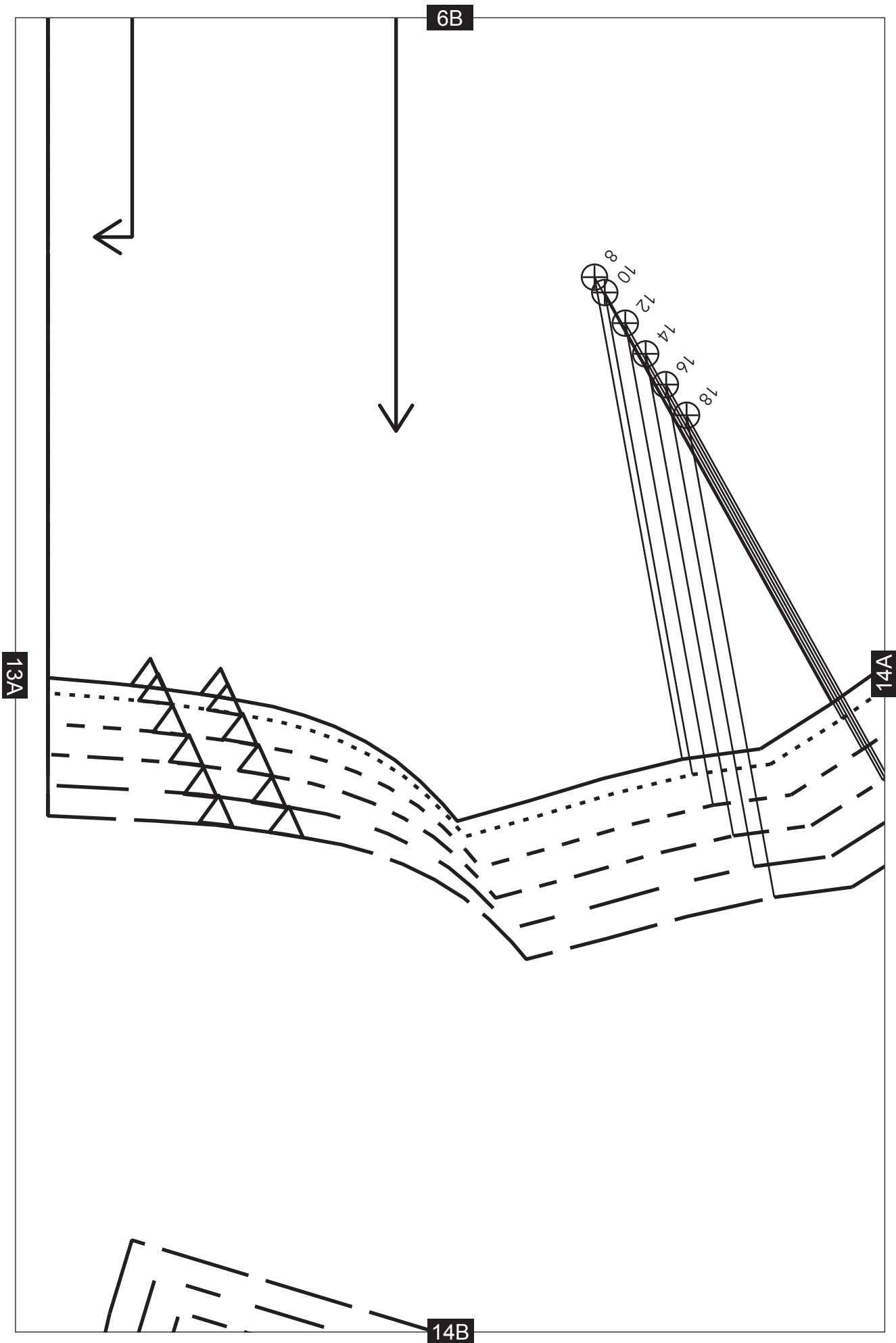
LOWER FRONT

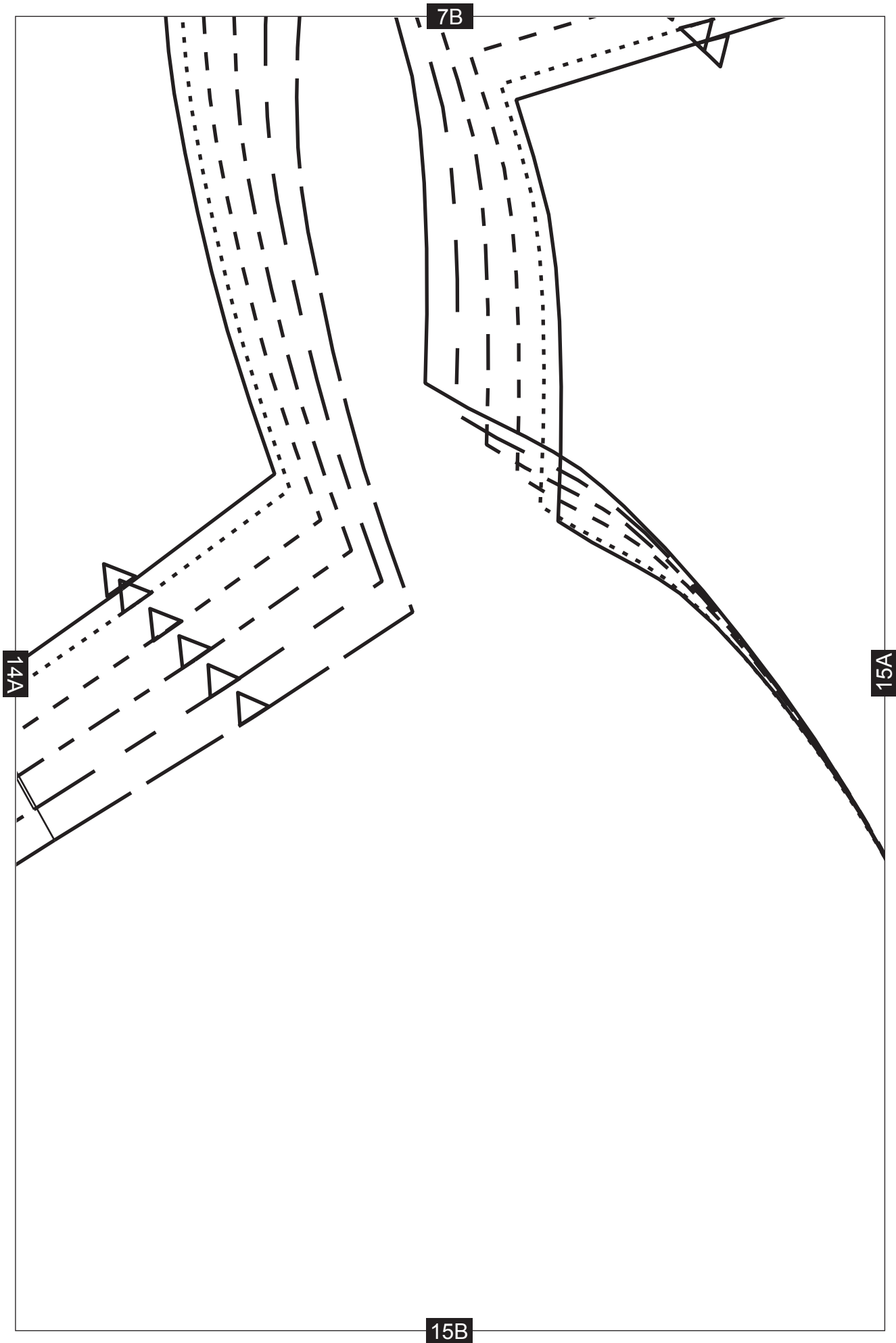
11A

12A

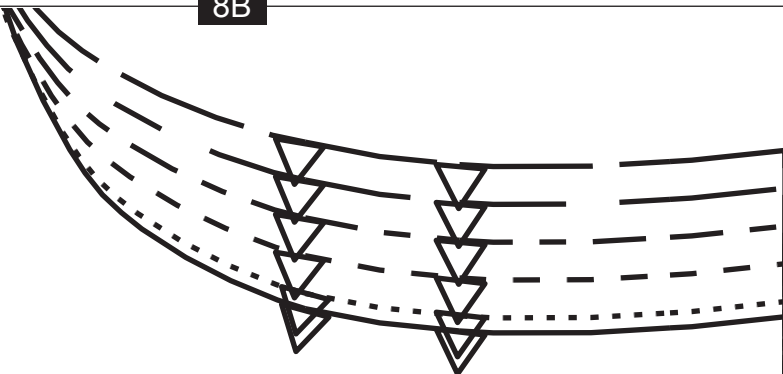
12B





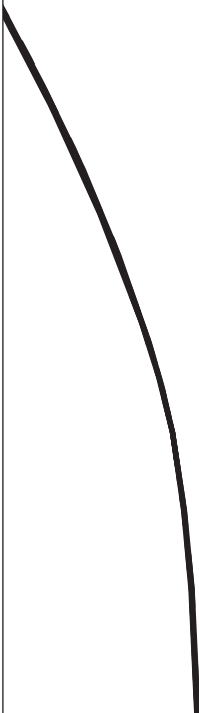


8B



UPPER FRONT
FACING

15A



16B

9B

PLACE ON FOLD

17A

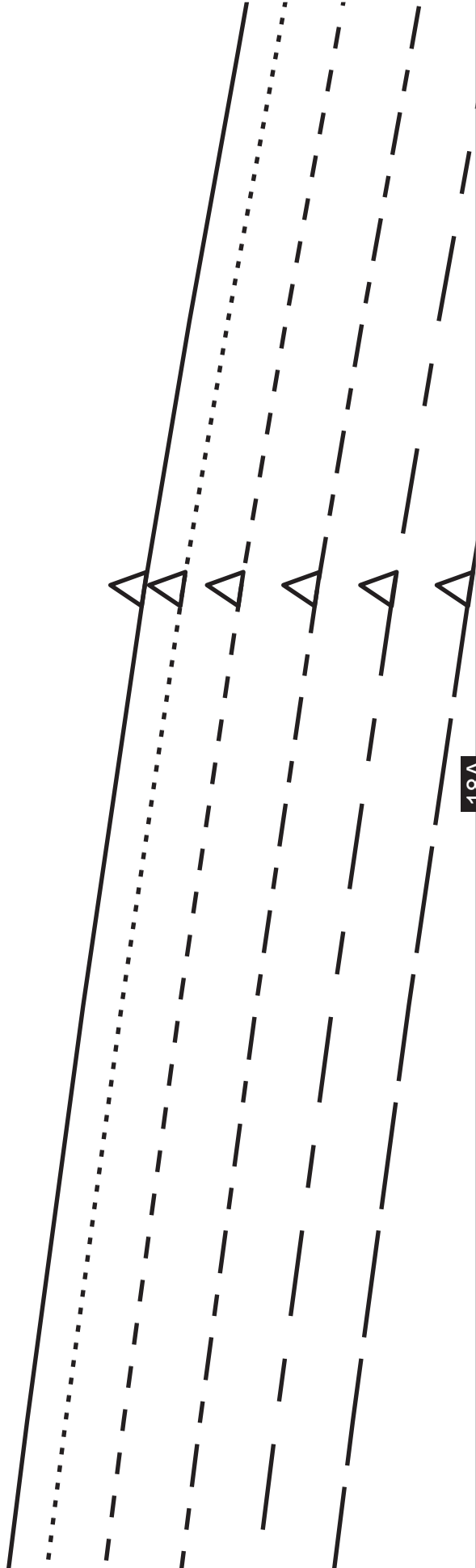
17B

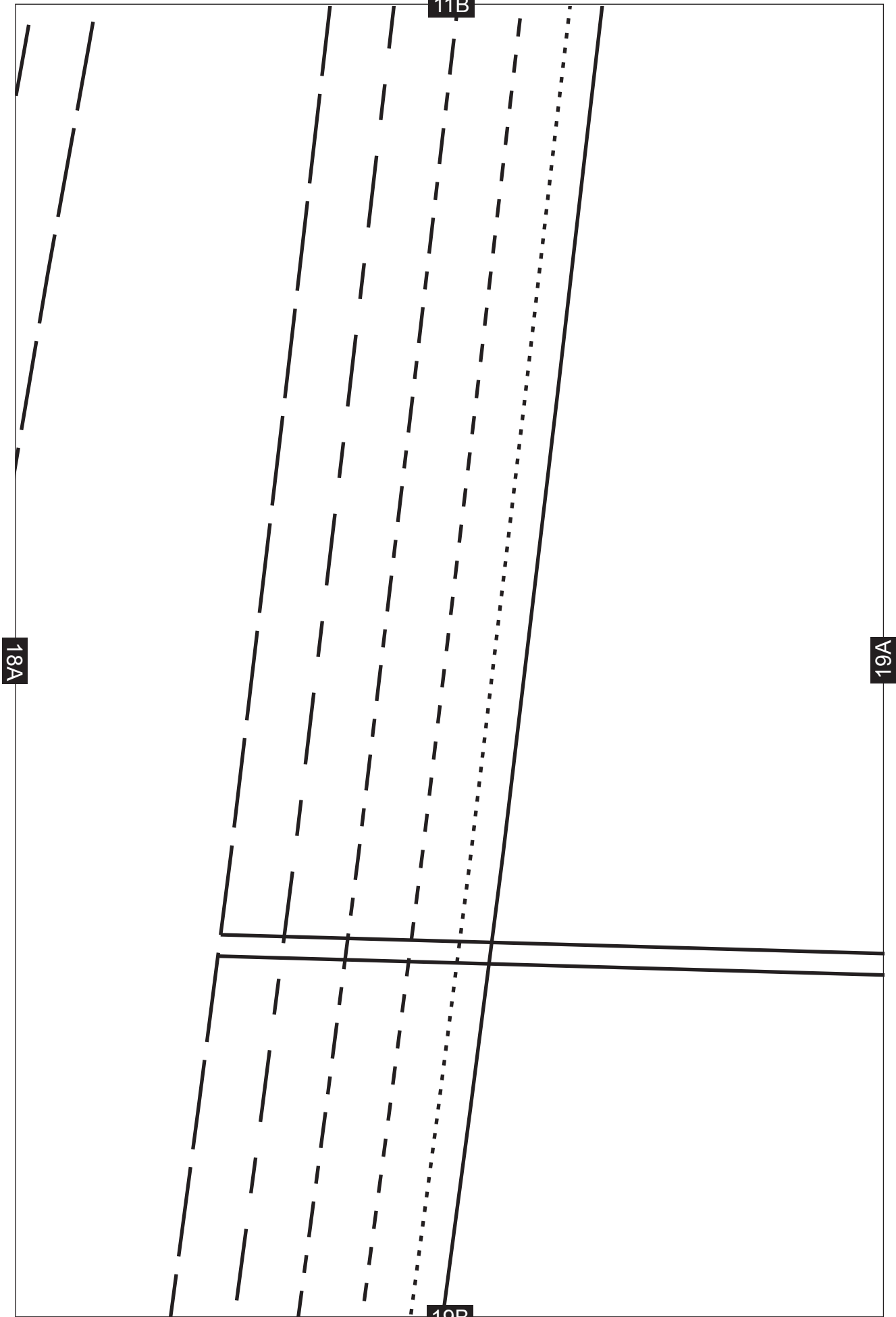
10B

17A

18A

18B





18A

19A

11B

19B

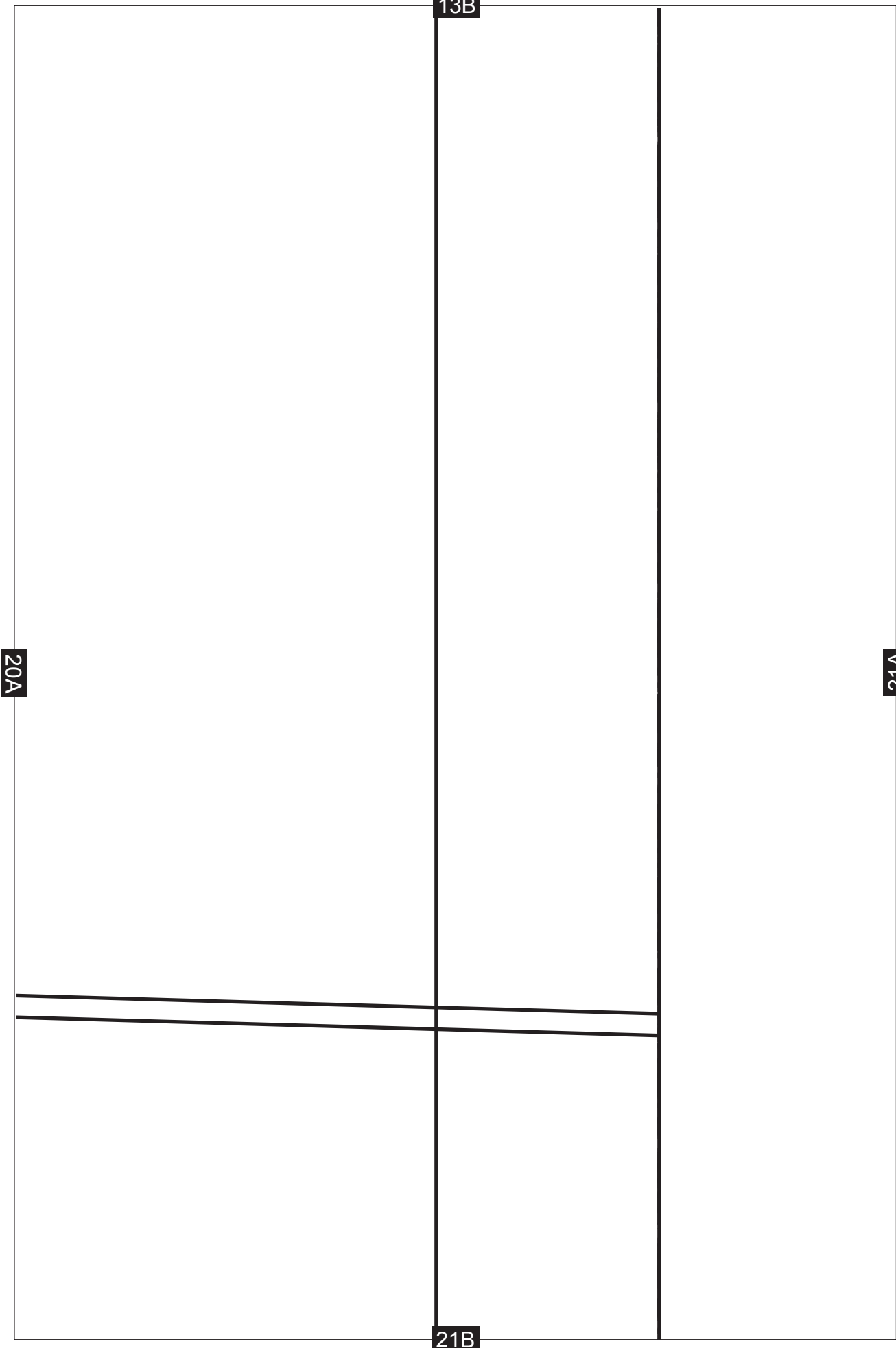
12B

19A

20A

LENGTHEN OR SHORTEN HERE

20B



13B

20A

21A

21B

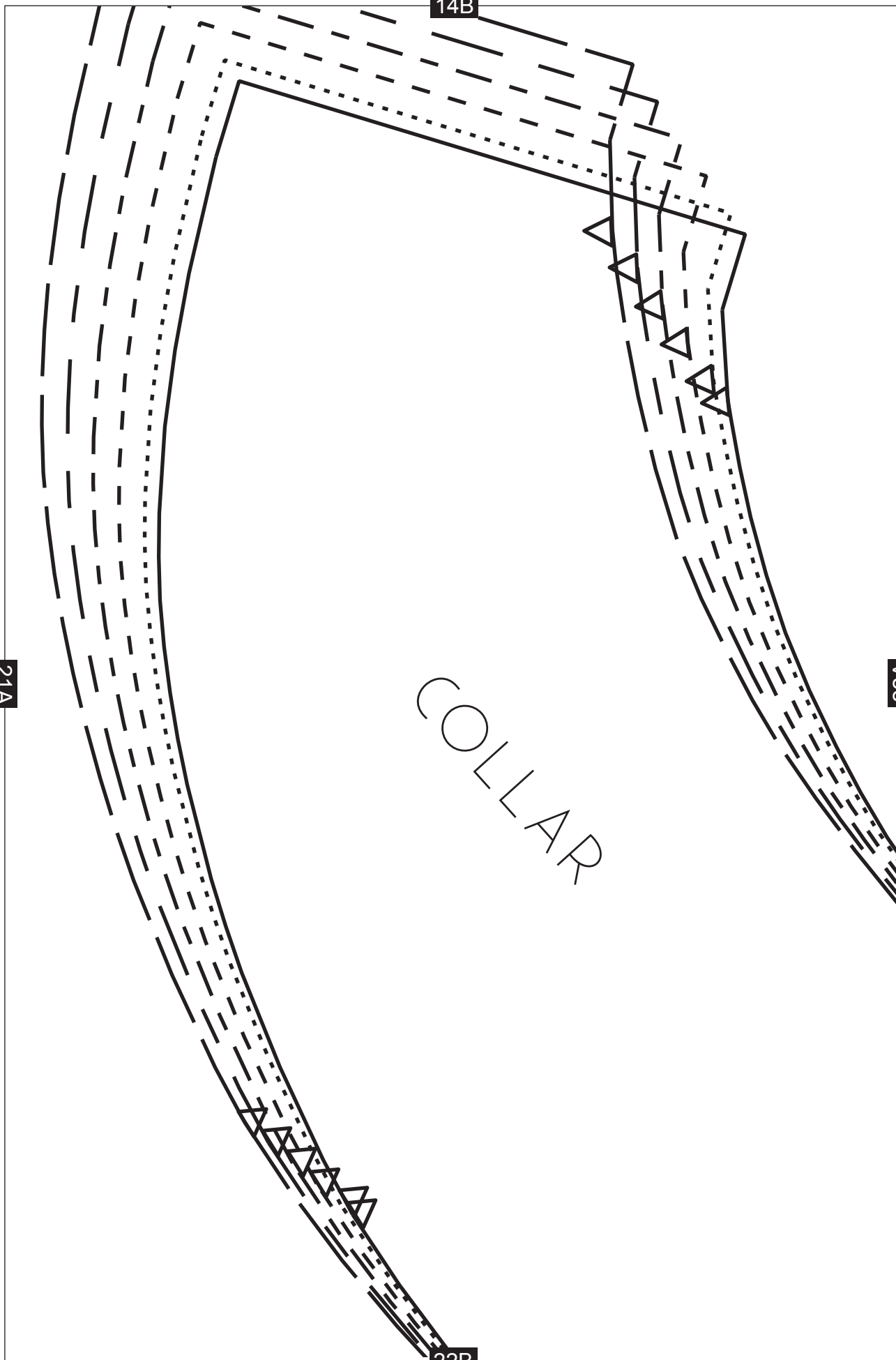
14B

21A

22A

COLLAR

22B

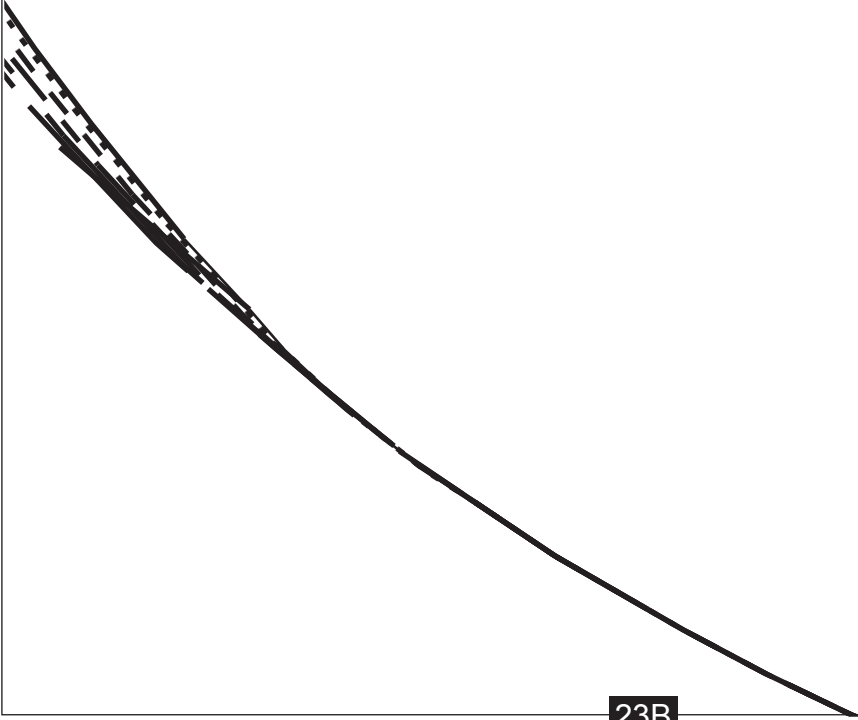


15B

22A

23A

23B



16B



23A

24B

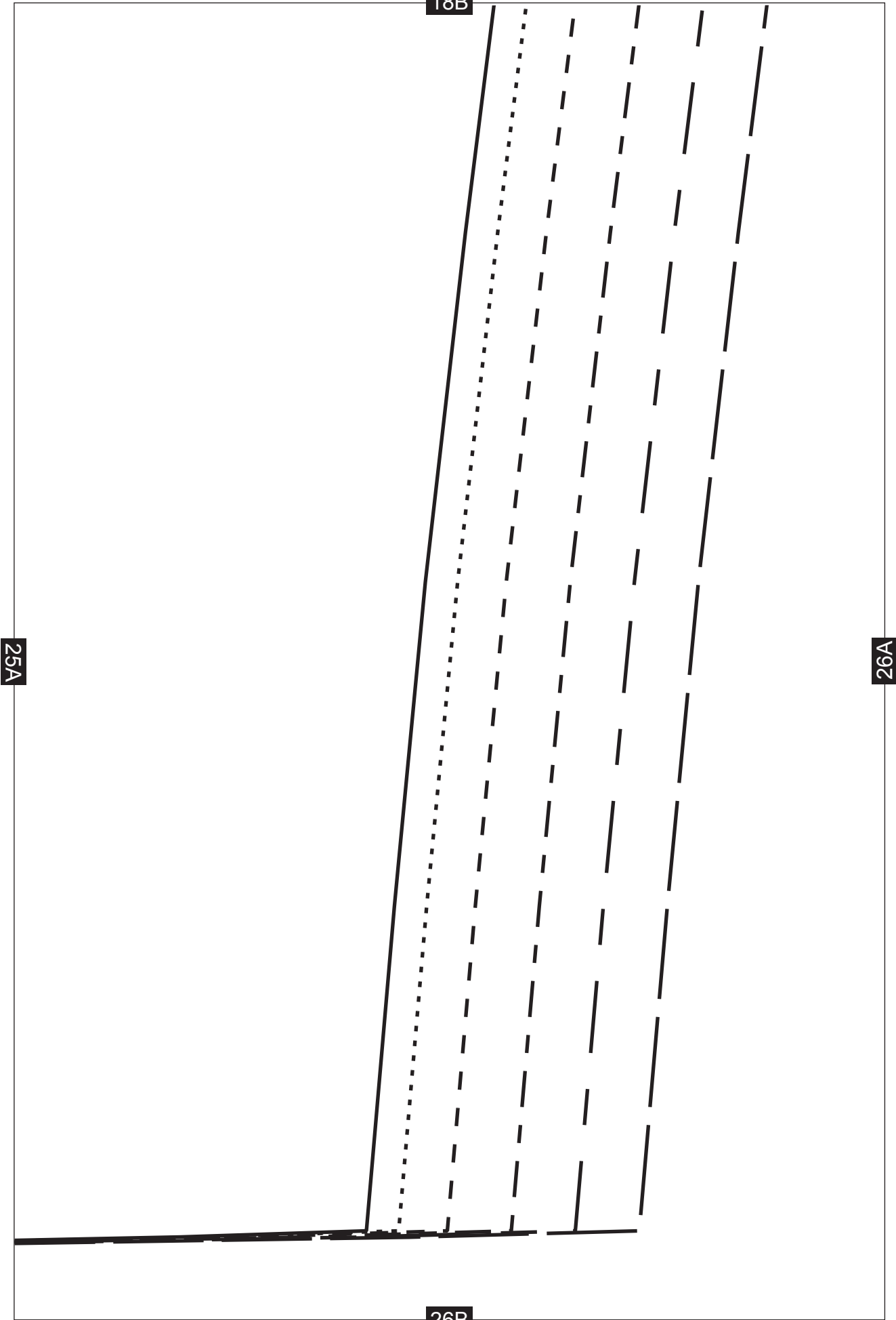
17B

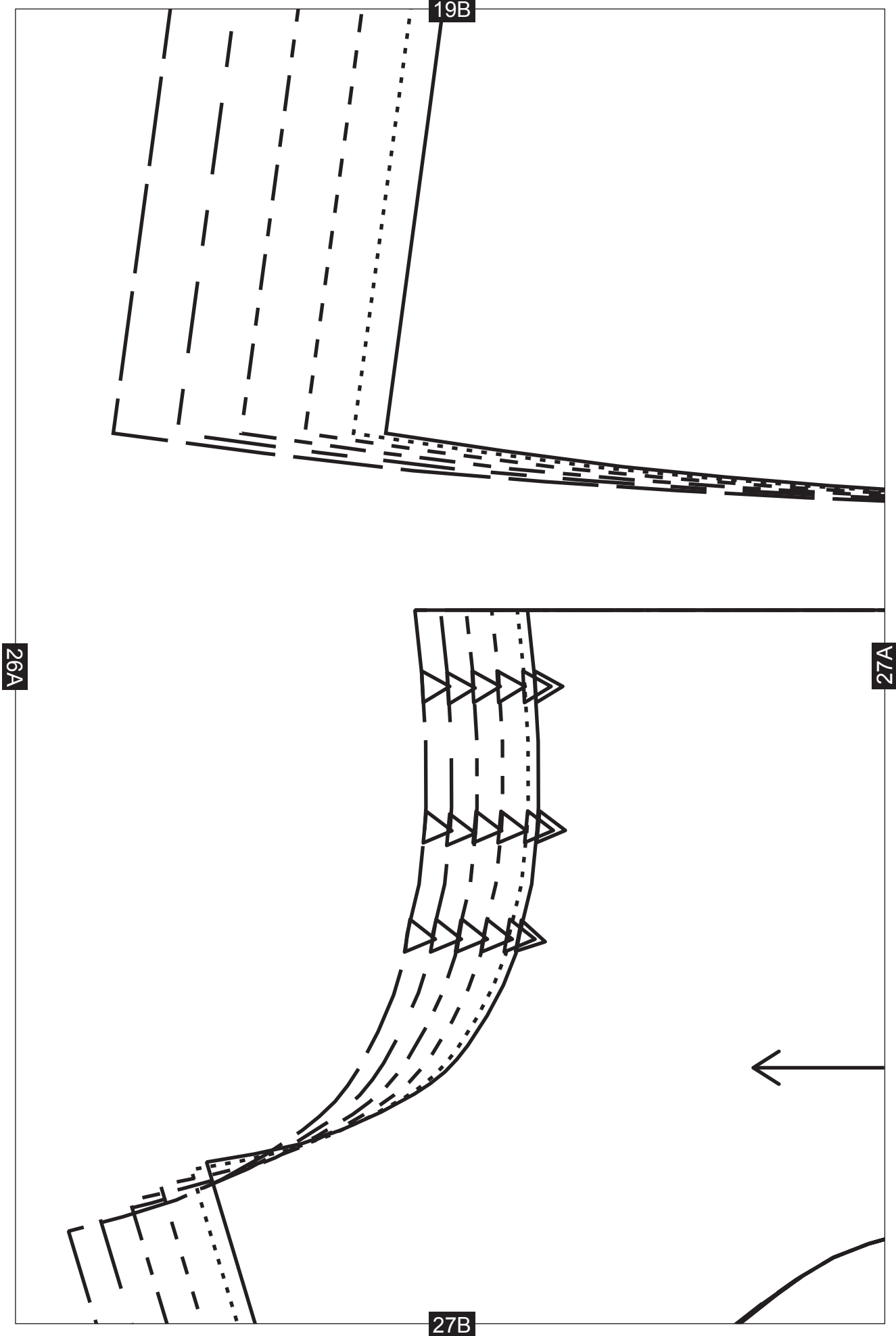


LOWER BACK

25A

25B





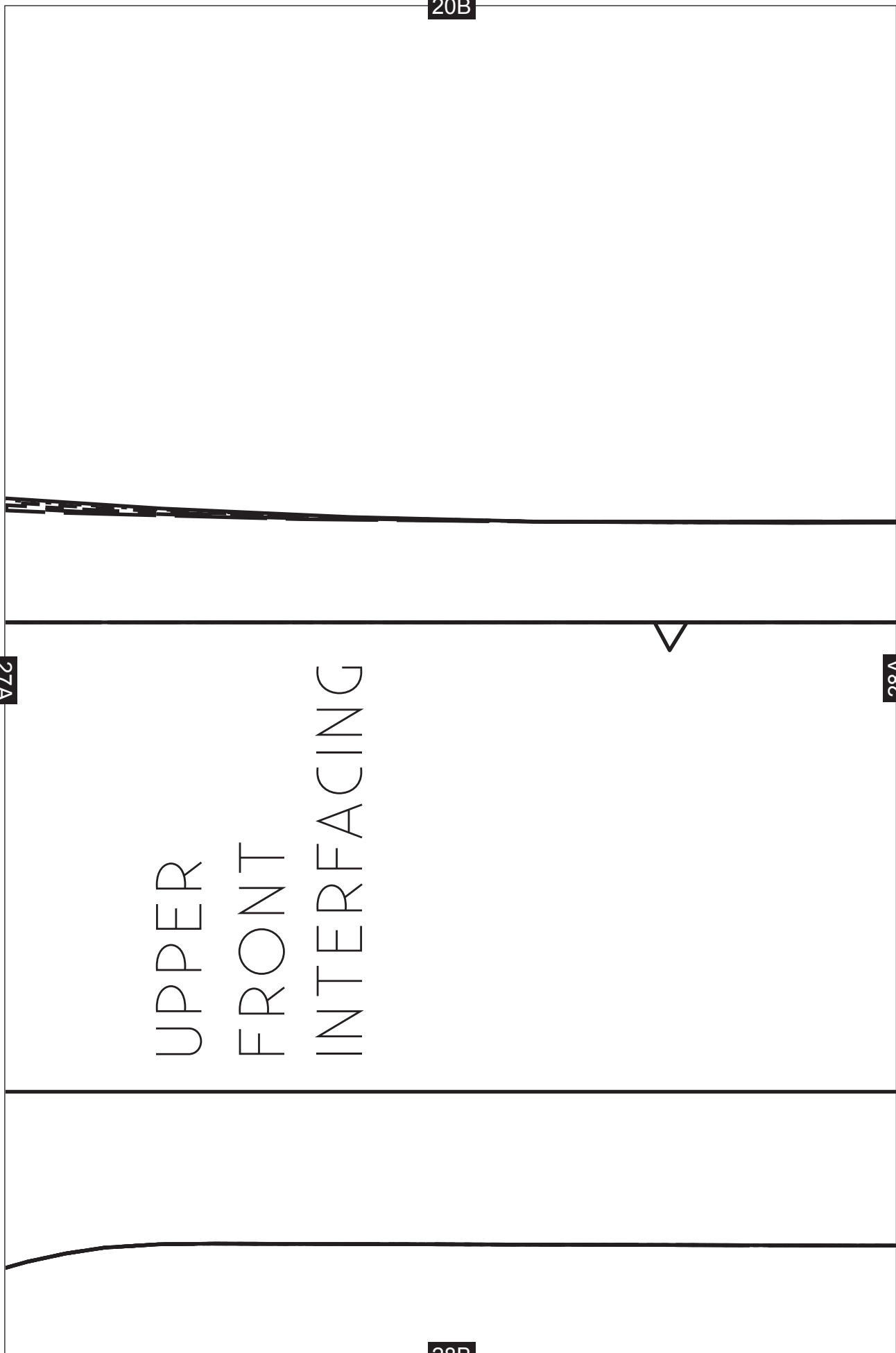
20B

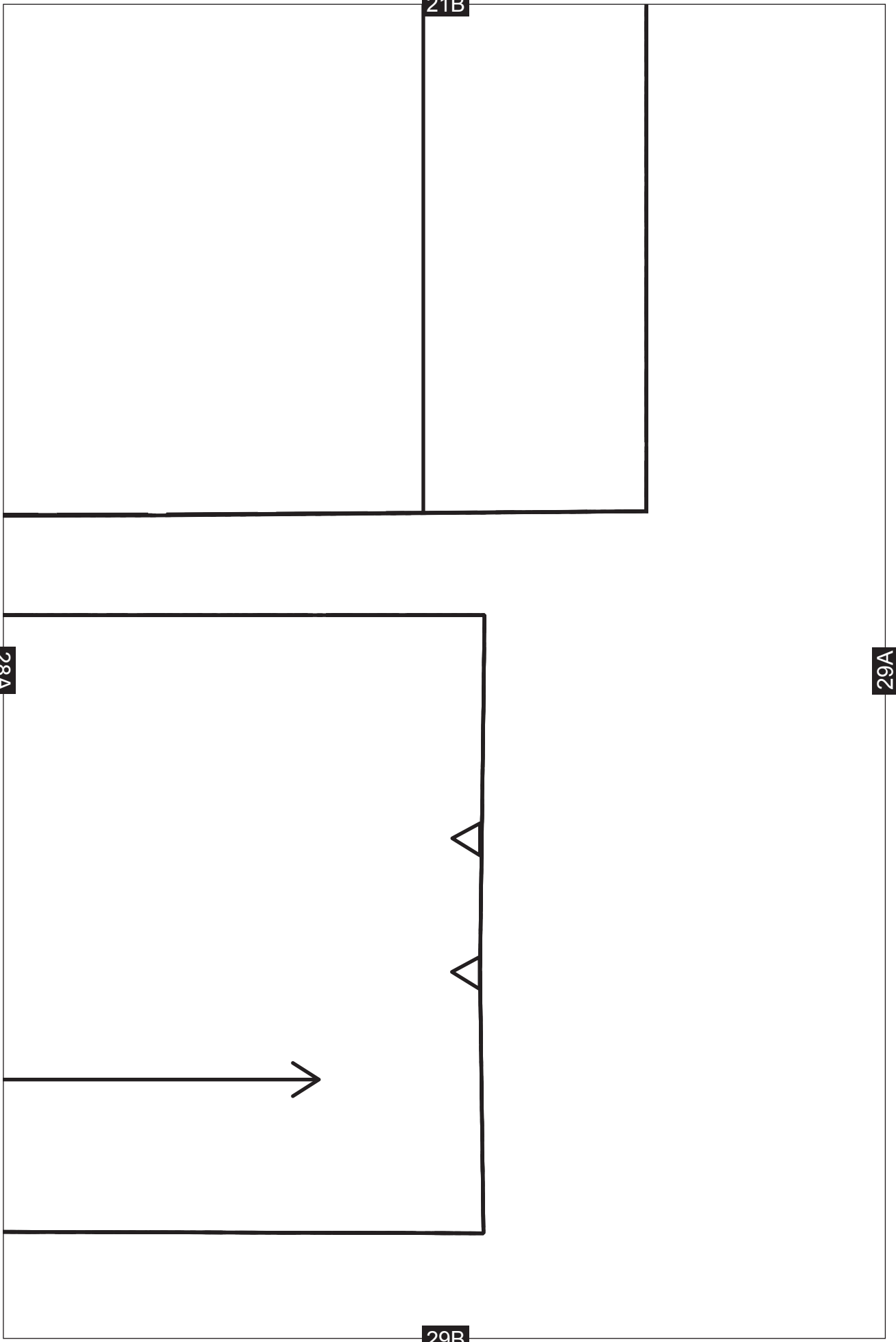
28A

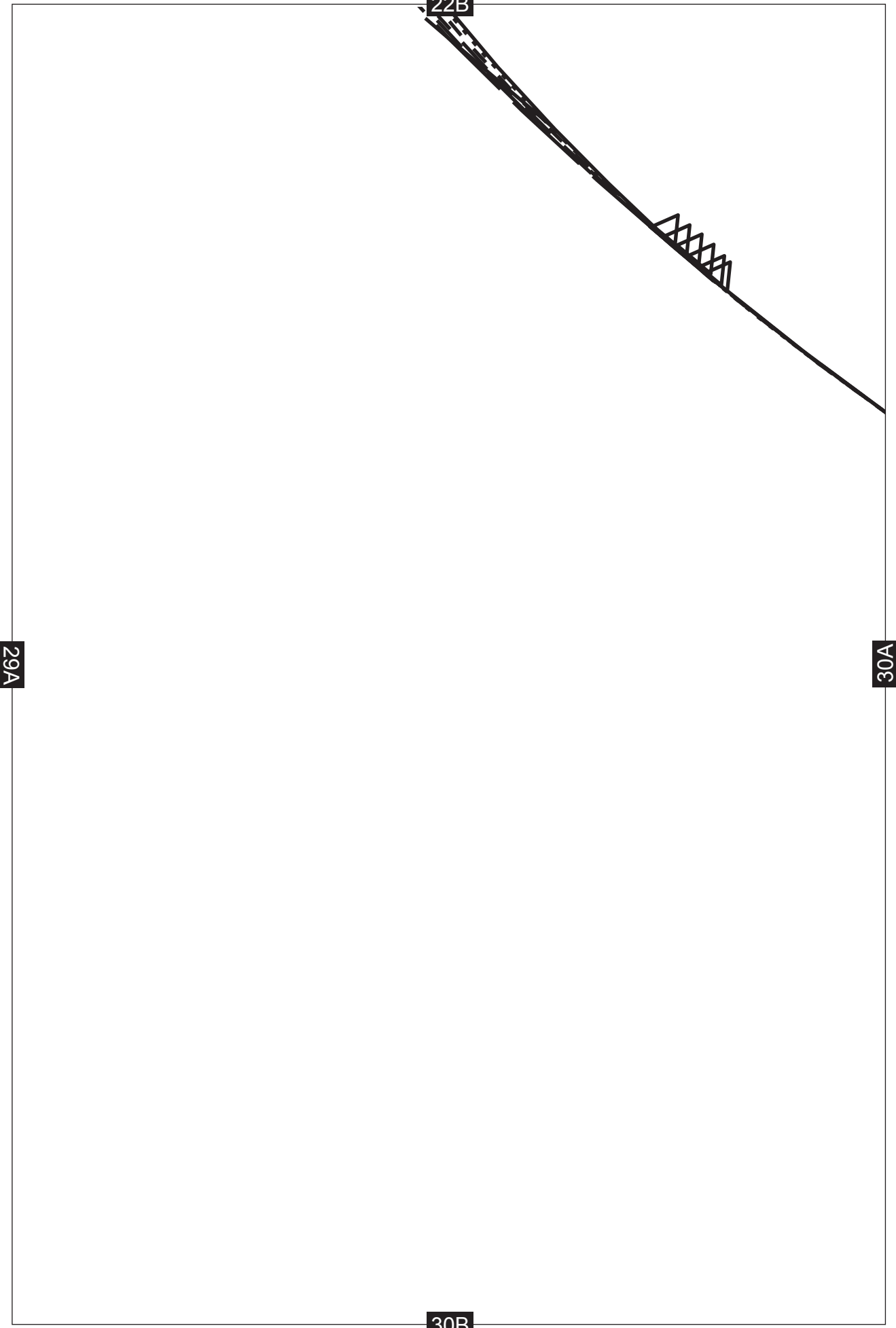
UPPER
FRONT
INTERFACING

27A

28B





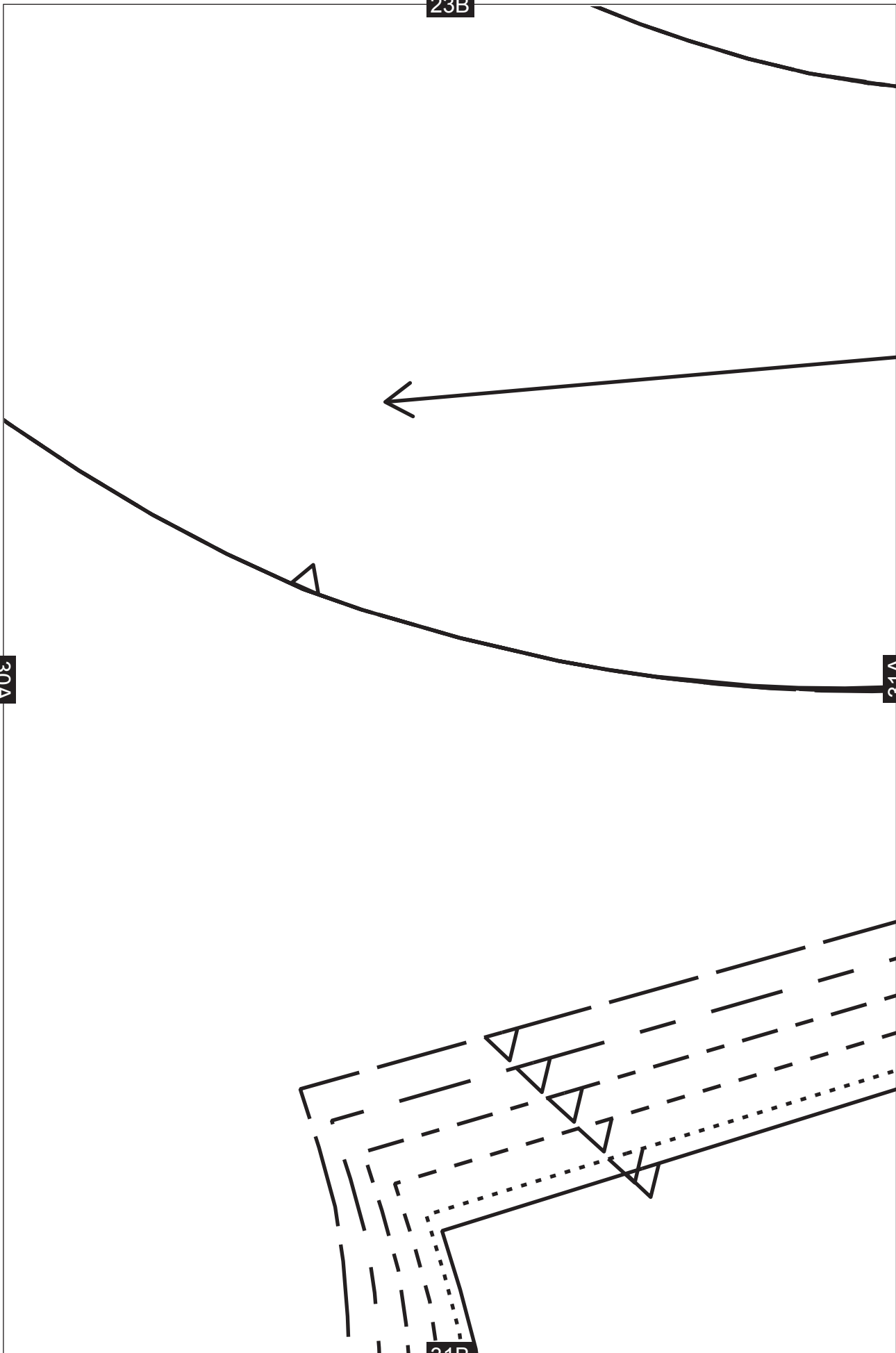


23B

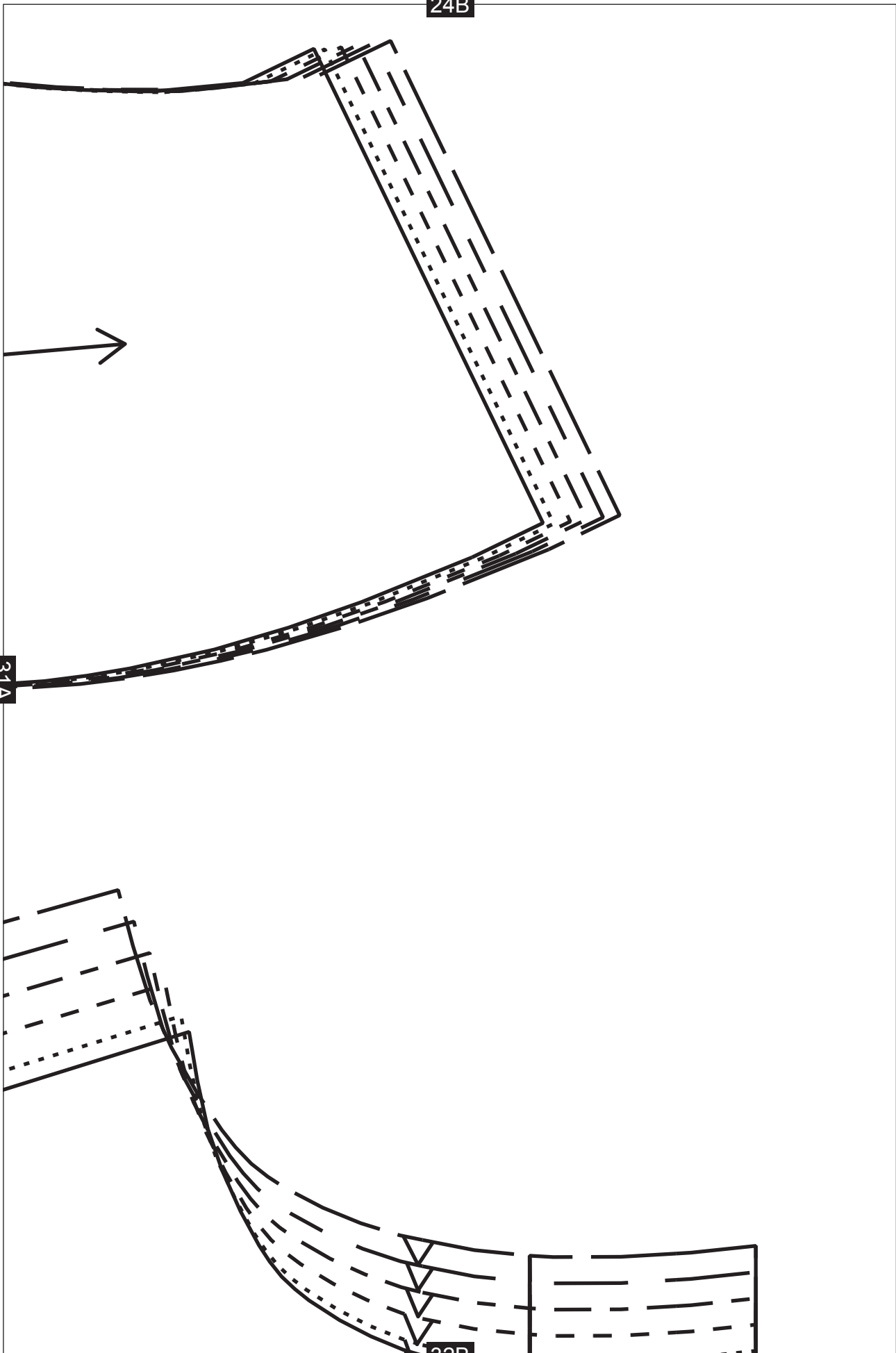
30A

31A

31B



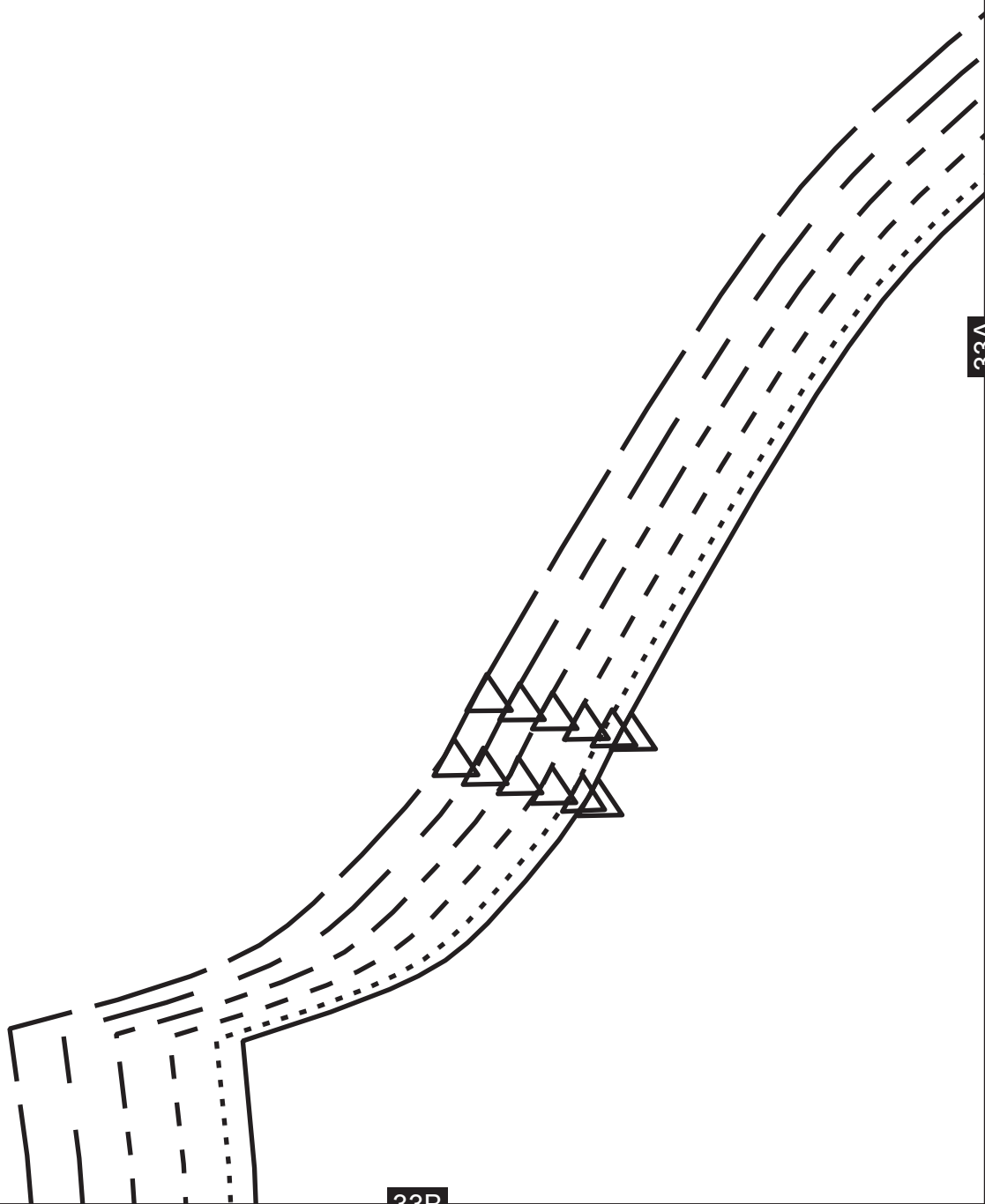
24B



31A

32B

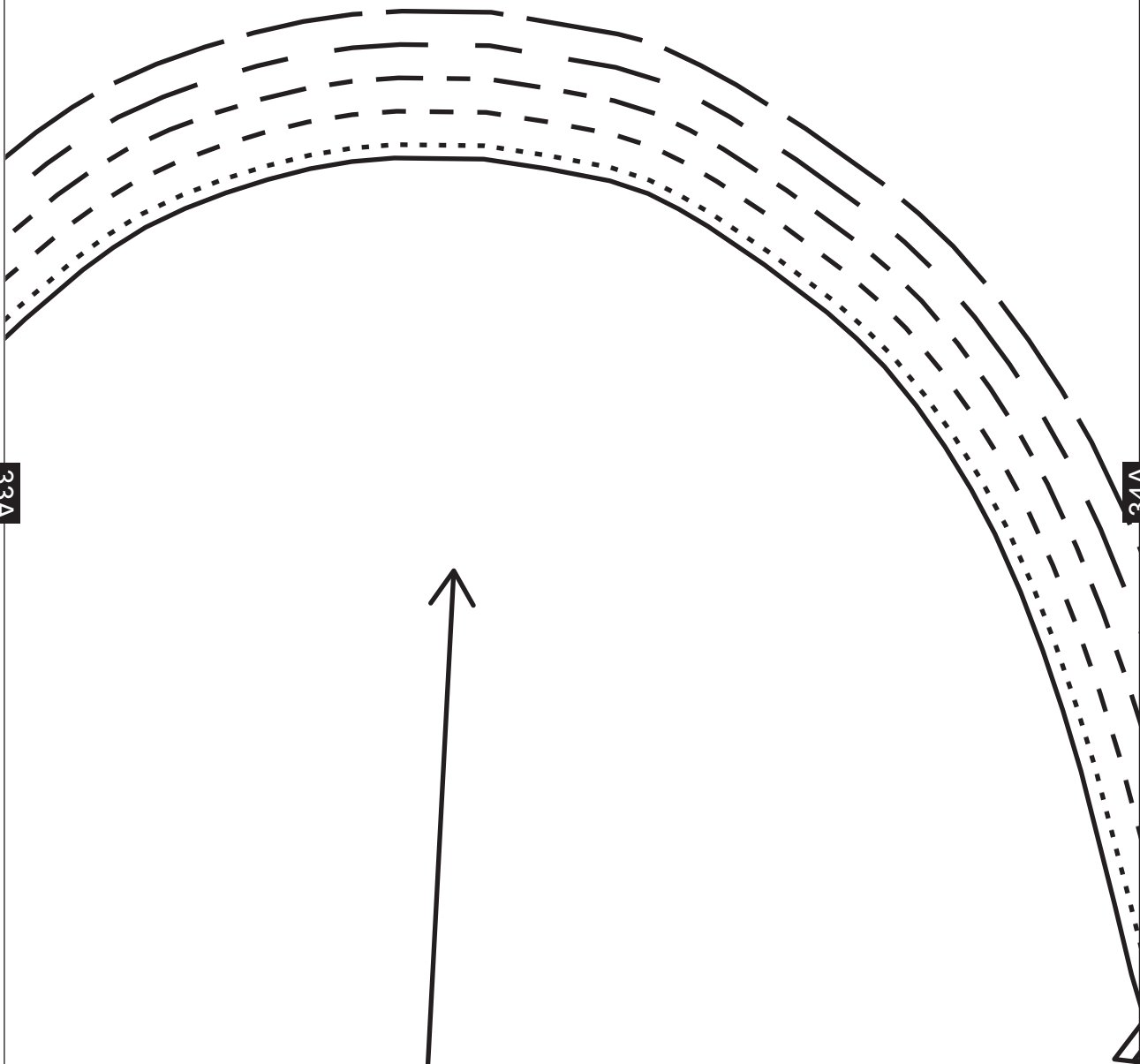
25B



33A

33B

26B



33A

34A

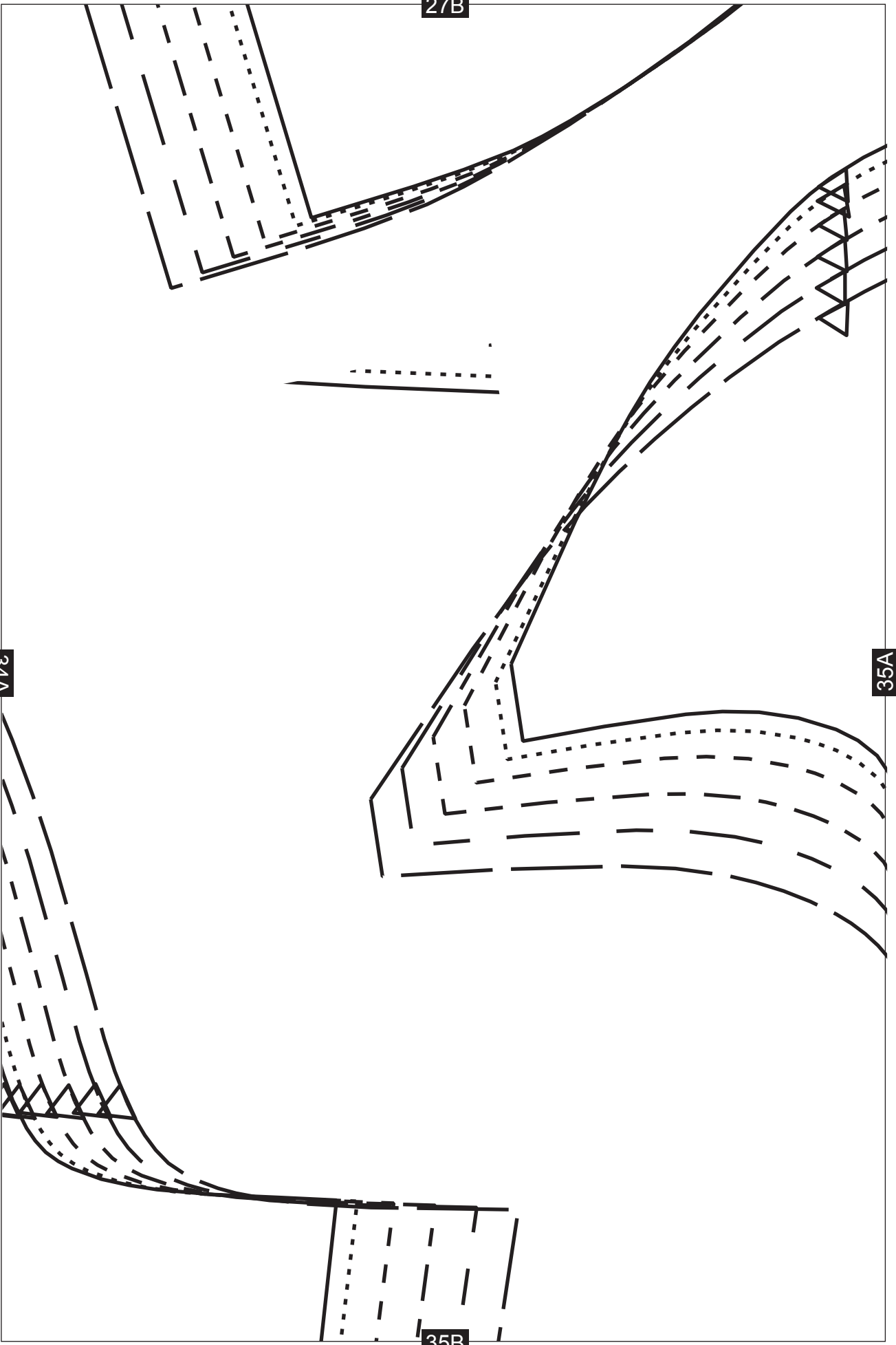
34B

27B

34A

35A

35B



28B

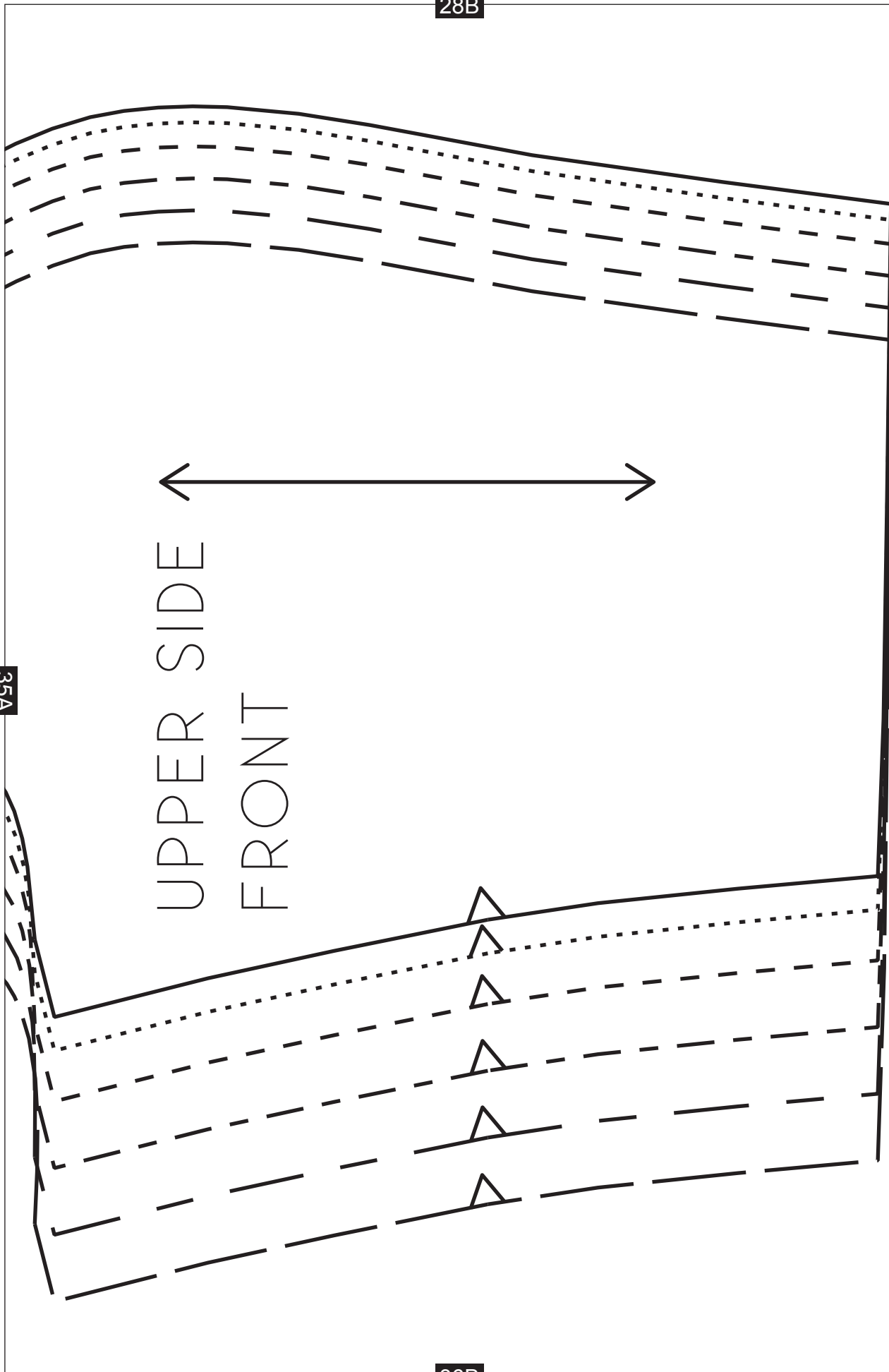
35A

36A

UPPER SIDE
FRONT



36B

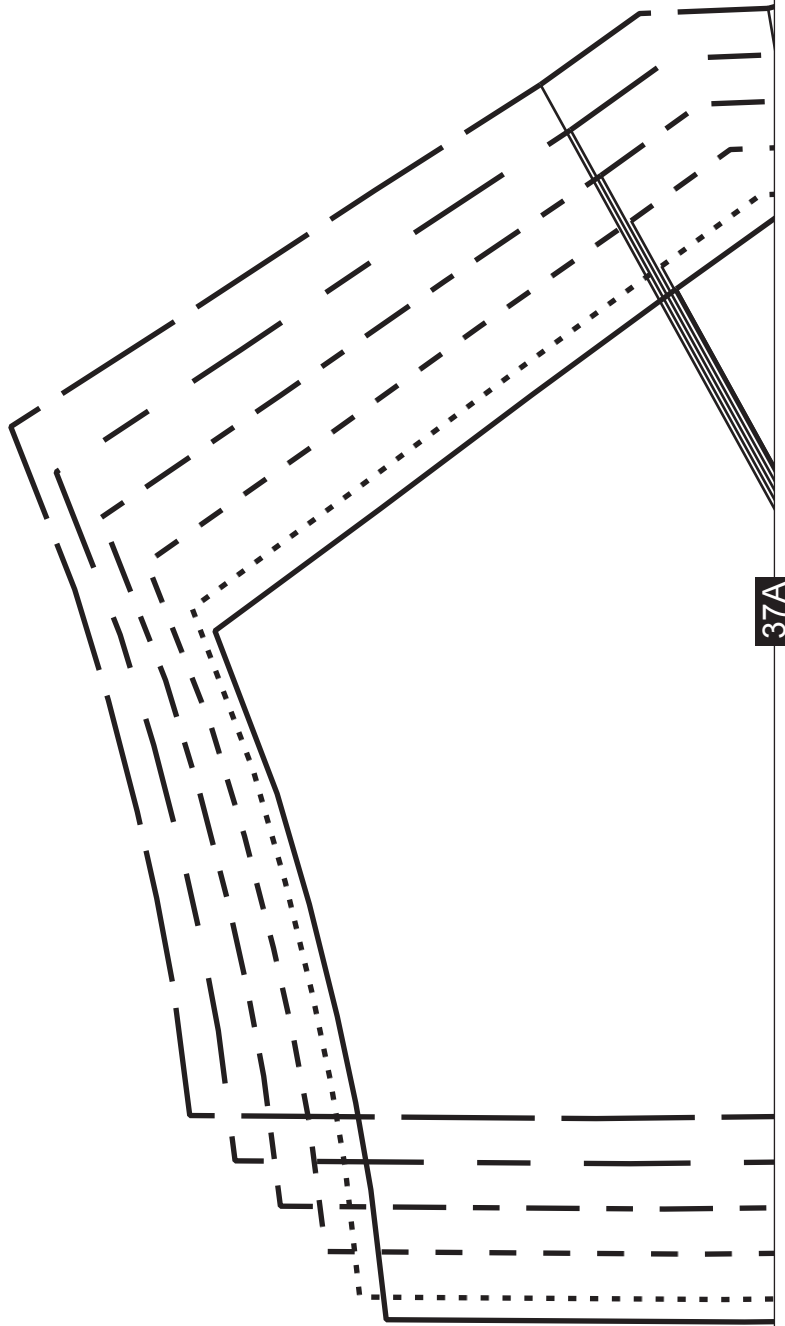


29B

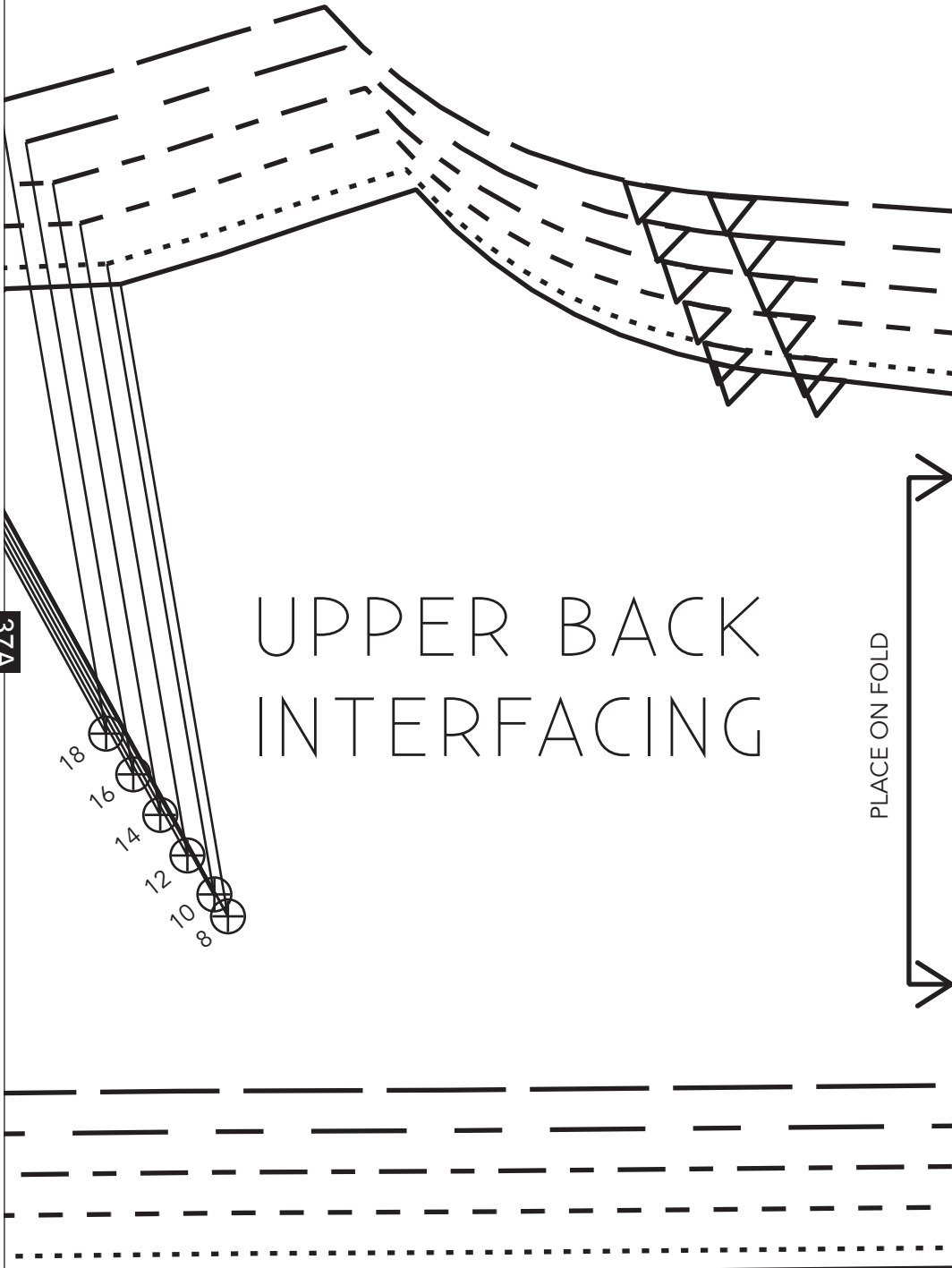
36A

37A

37B



30B



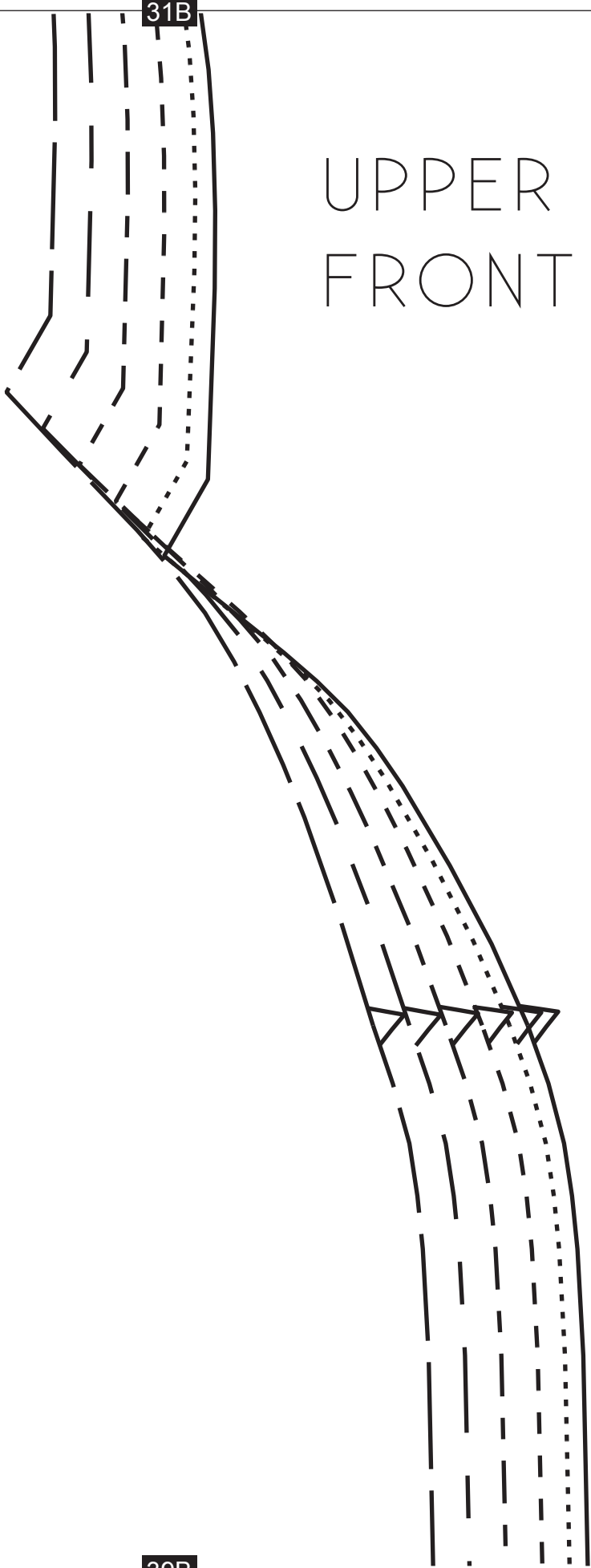
31B

UPPER
FRONT

38A

39A

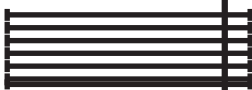
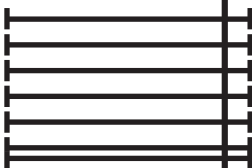
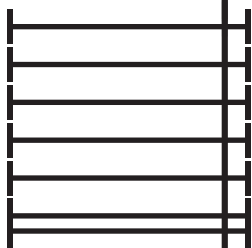
39B



39A



32B

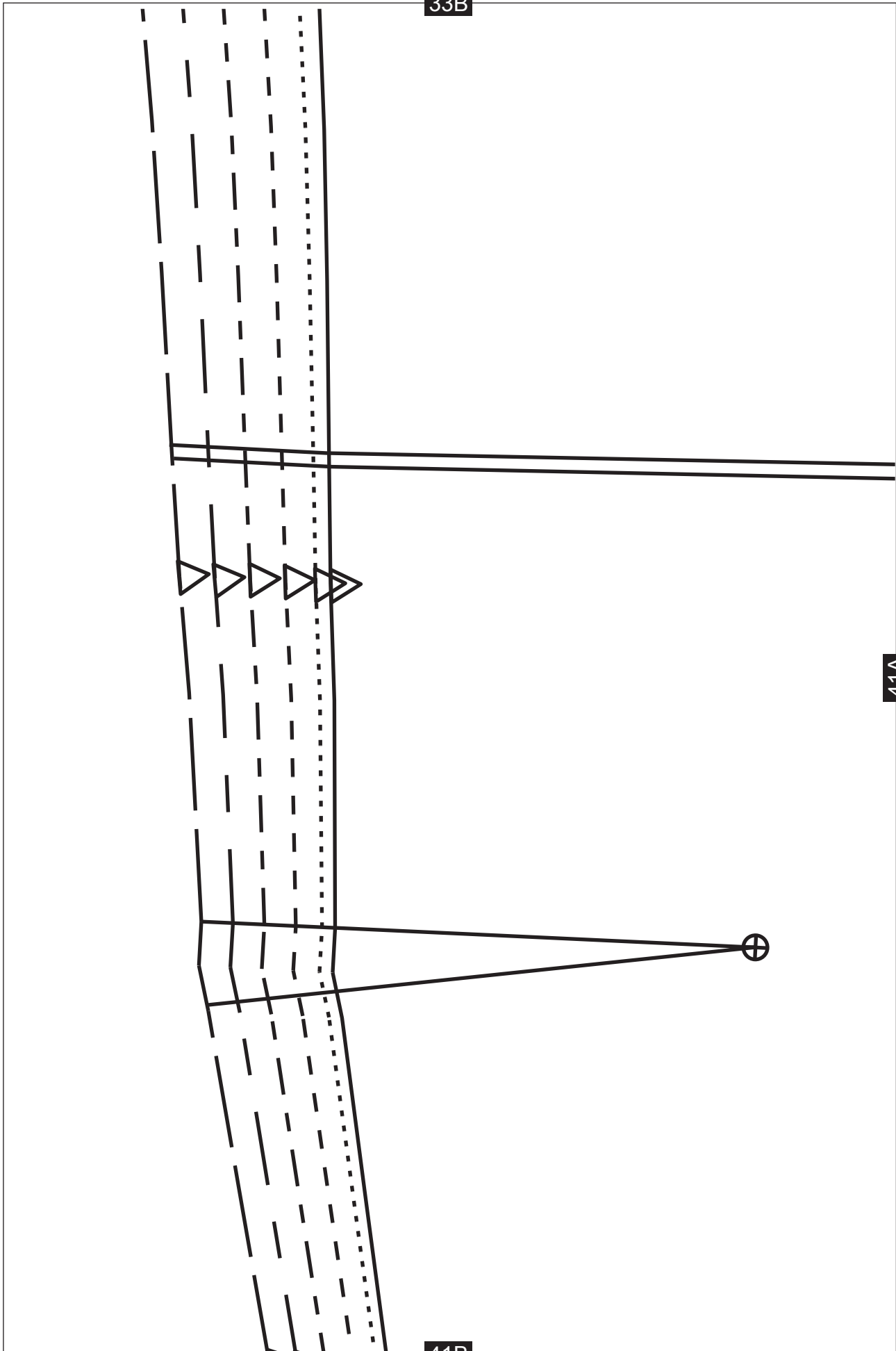


CENTRE FRONT

40B



33B



41A

41B

34B



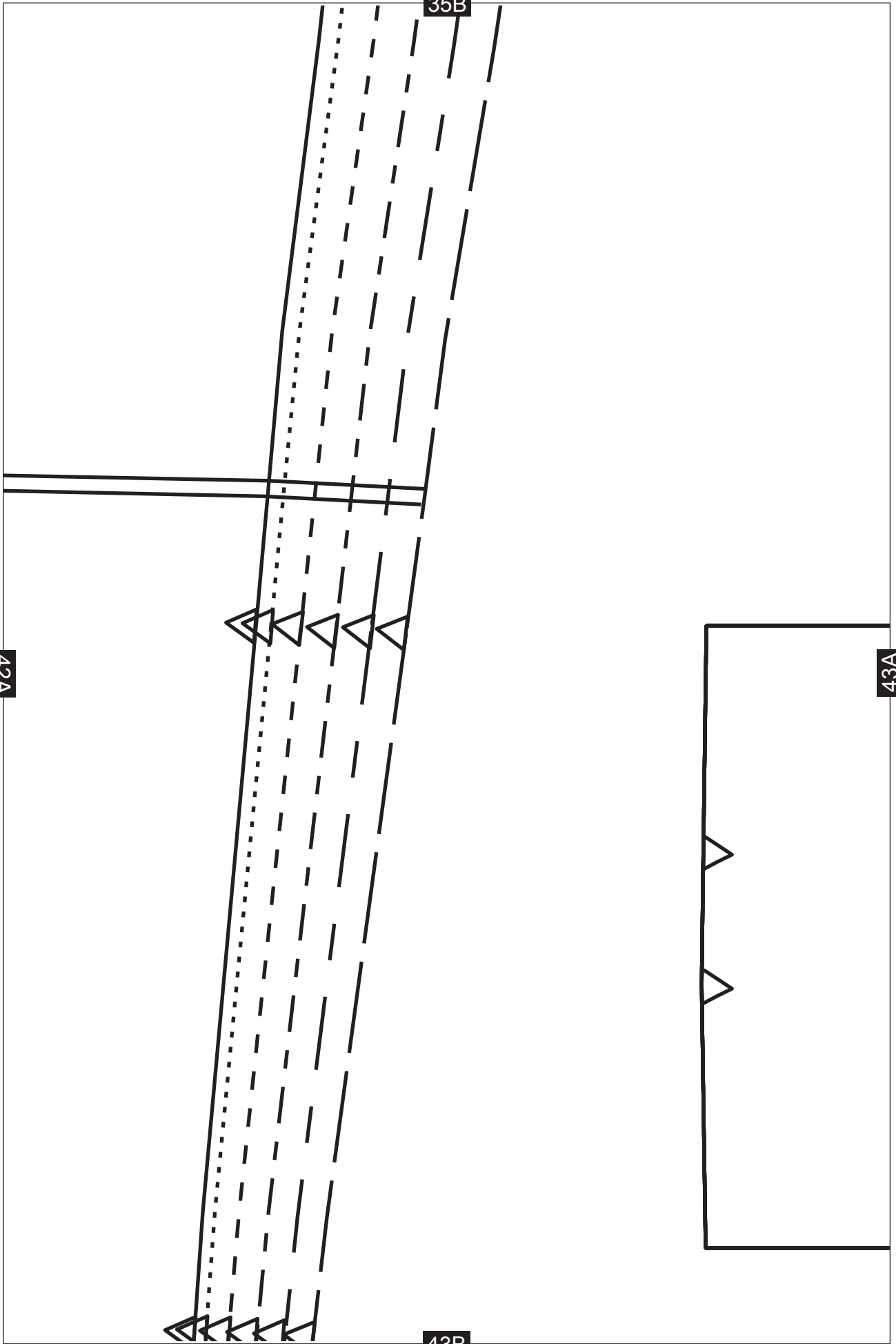
LENGTHEN OR SHORTEN HERE

41A

42A

SLEEVE

42B



36B

43A

44A

LOWER FRONT FACING

44B

37B

44A

45A



45B

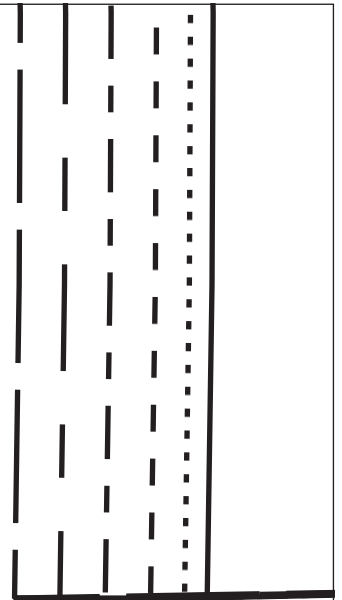
38B

45A

46A

46B

39B



46A

47A



47B

40B



47A

LENGTHEN OR SHORTEN HERE

48B

41B



49A



42B

LENGTHEN OR SHORTEN HERE

49A

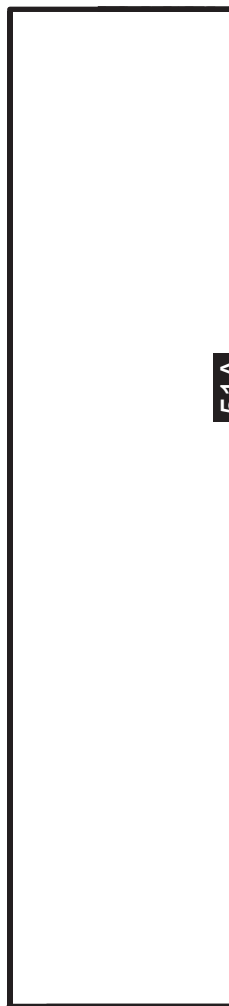
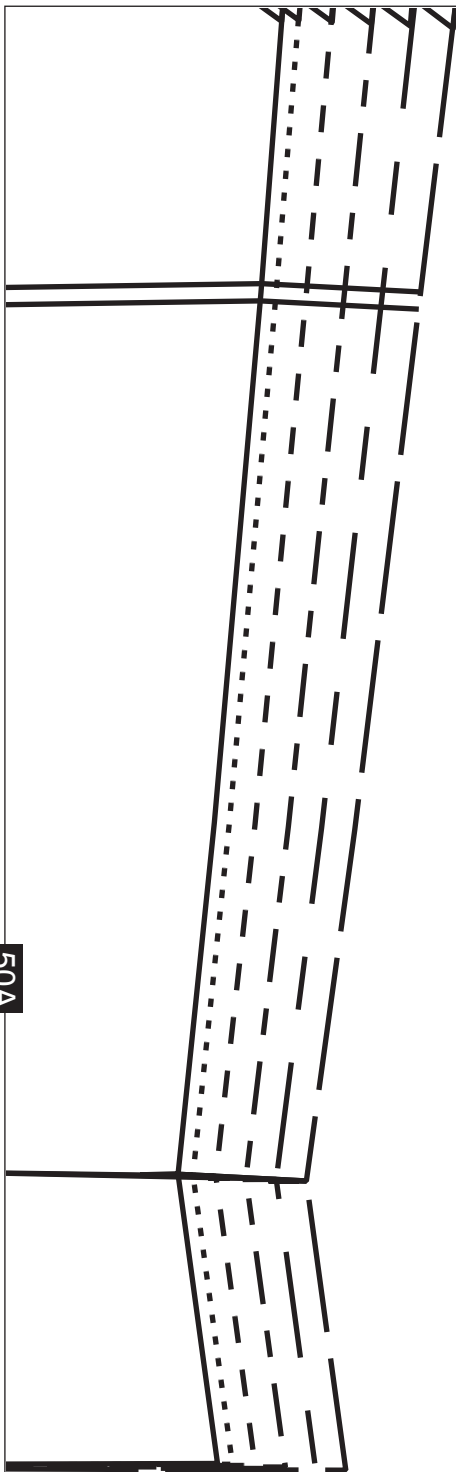
50A

HEMLINE

43B

50A

51A



44B

51A

52A



45B

52A

53A



46B

53A

LOWER FRONT
INTERFACING

54A

47B

54A

LENGTHEN OR SHORTEN HERE

55A

48B

55A

LENGTHEN OR SHORTEN HERE