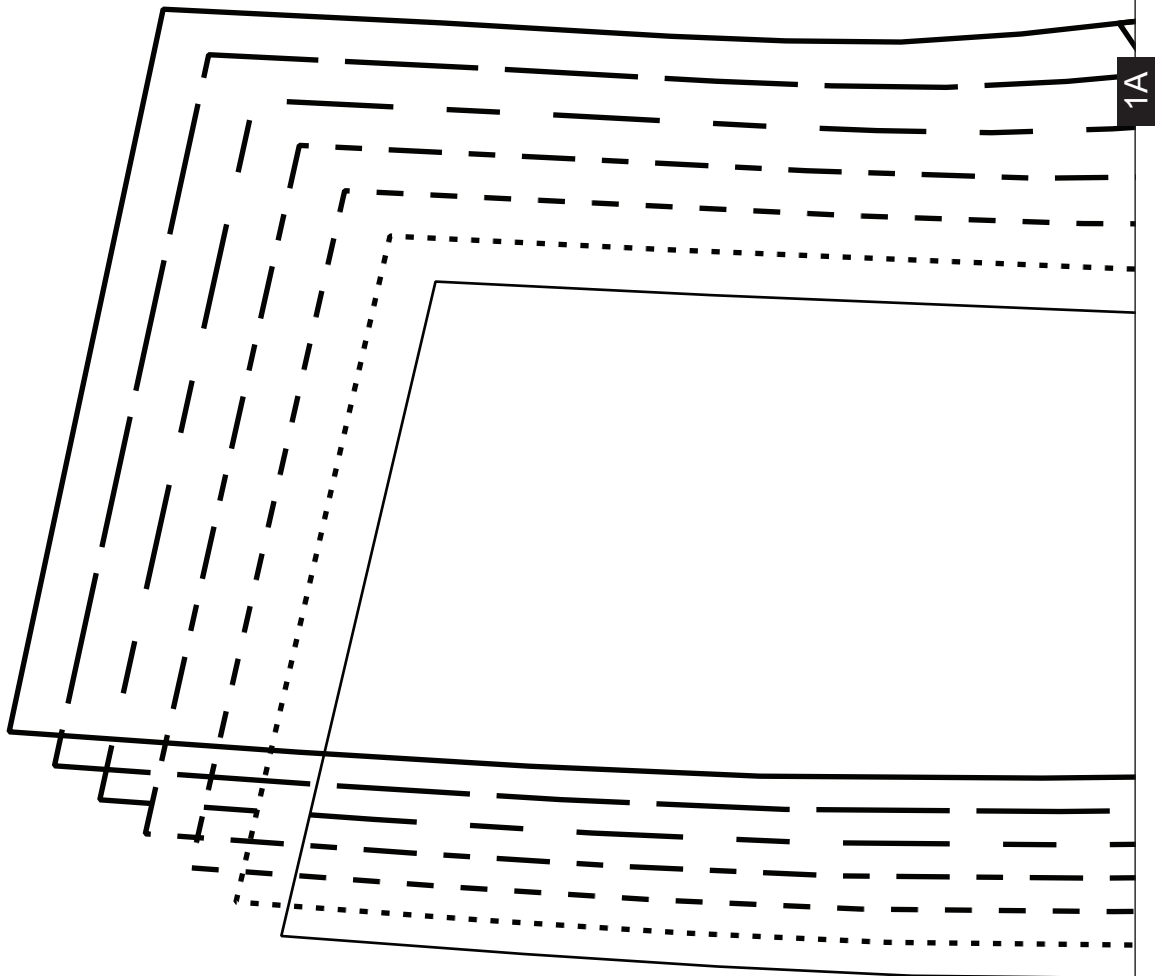
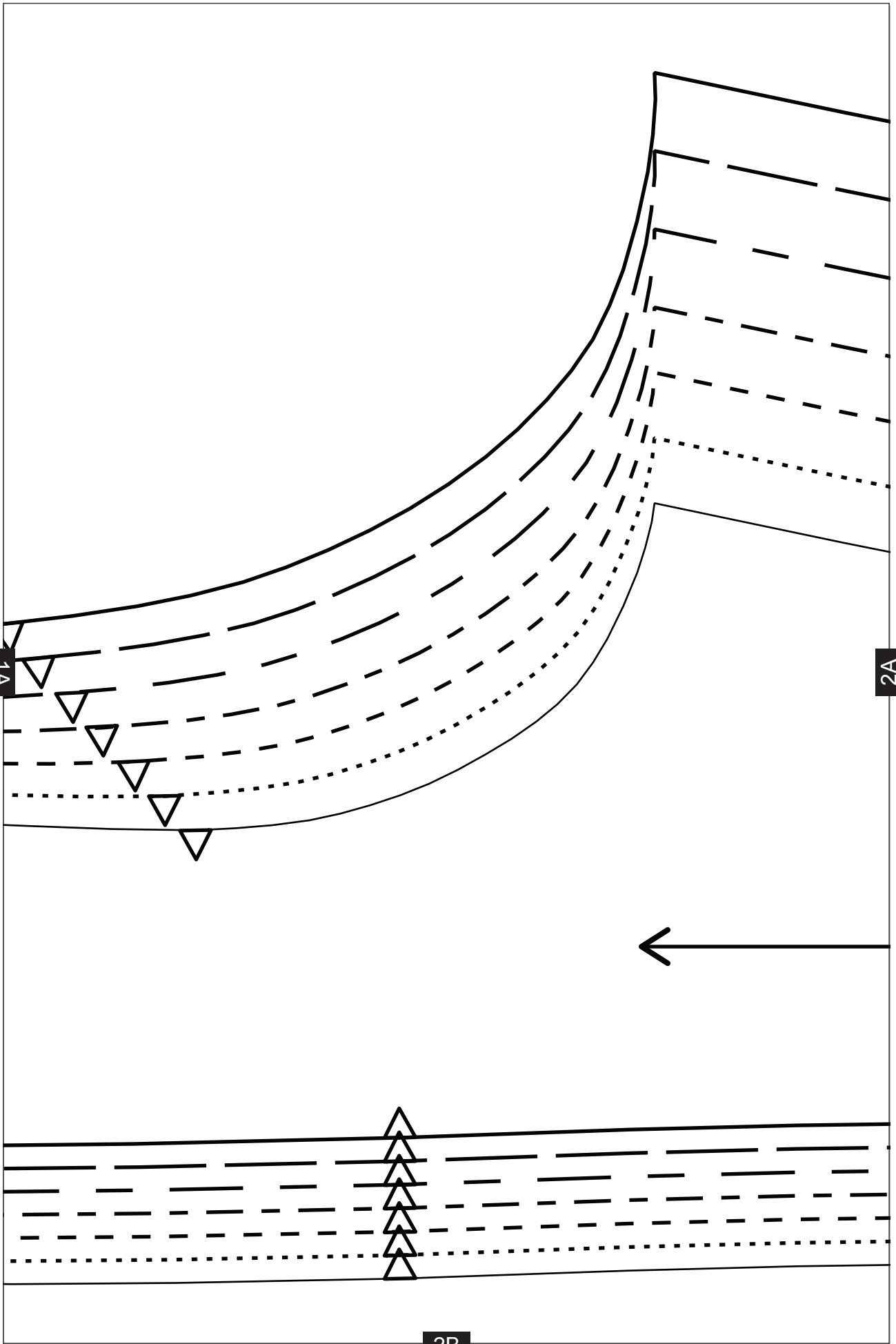


Leather Jacket

Project design © Love Productions 2015
This design is protected by copyright and
must not be made for resale.



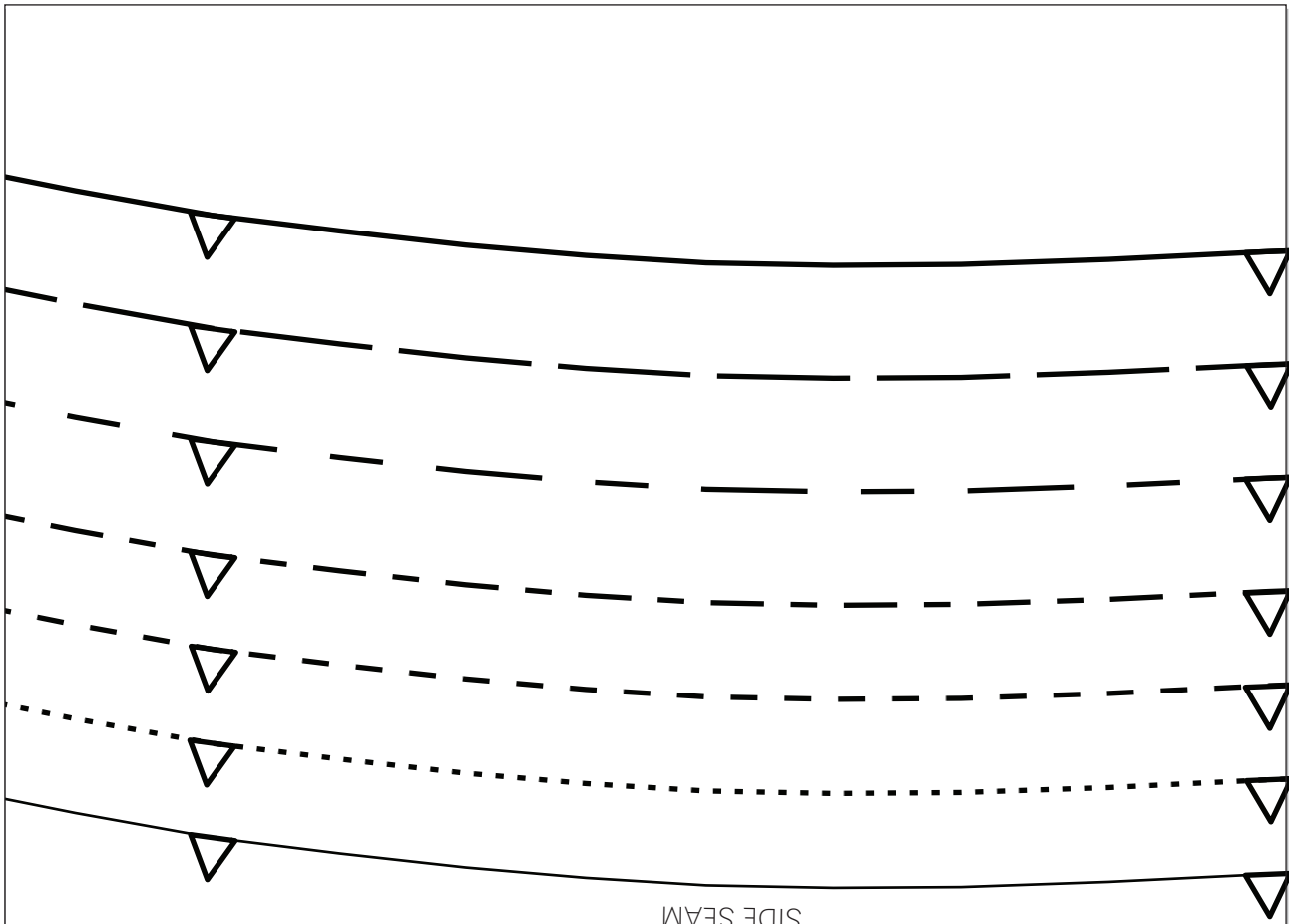
1B



1A

2A

2B

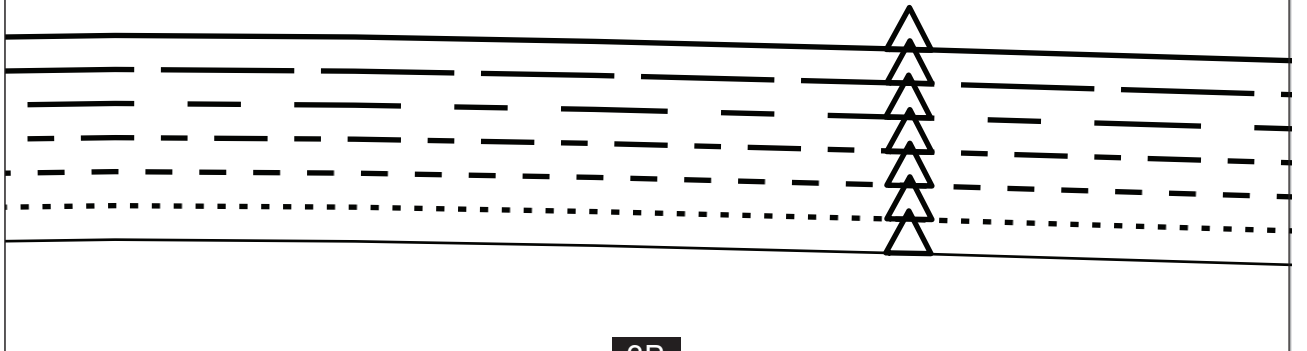


2A

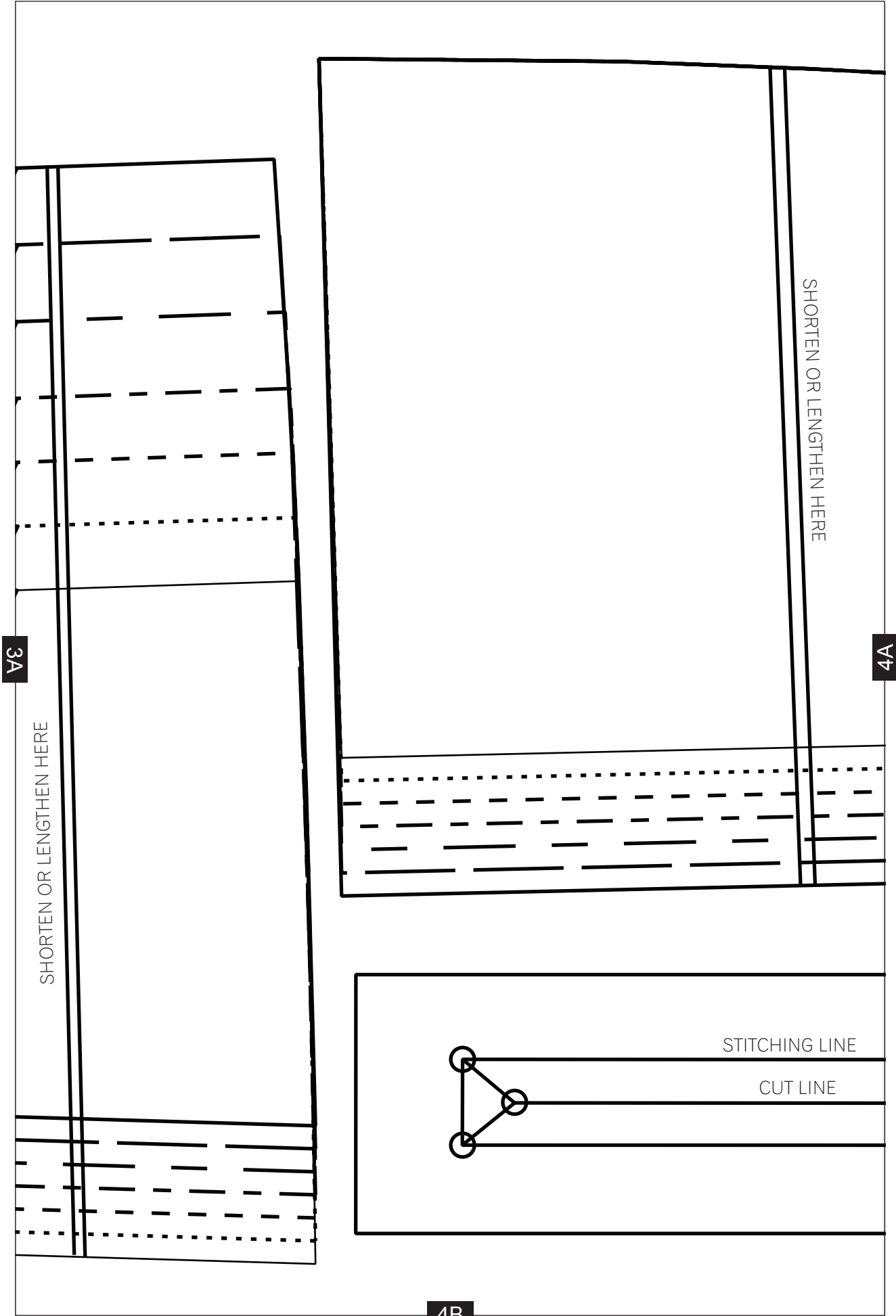
3A

LEATHER JACKET
 SIDE BACK LINING - CUT 2 IN LINING

1-CM (3/8-IN) SEAM ALLOWANCE INCLUDED



3B



CENTRE BACK

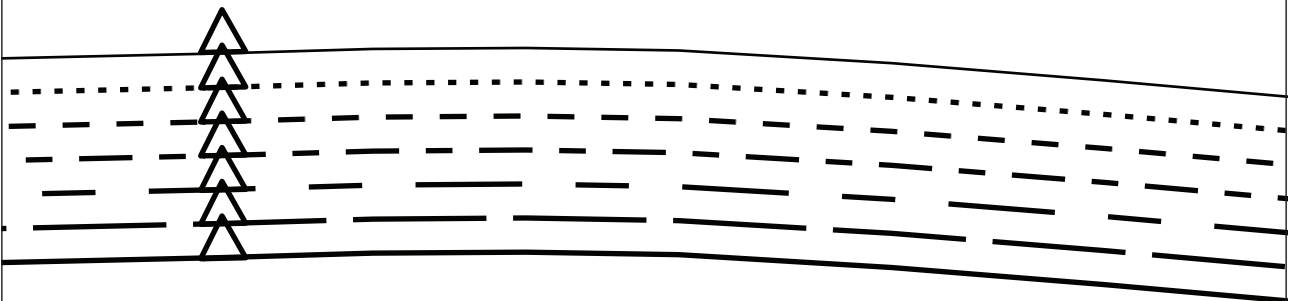
1-CM (3/8-IN) SEAM ALLOWANCE INCLUDED

LEATHER JACKET

CENTRE BACK – CUT 2 IN LEATHER OR FABRIC

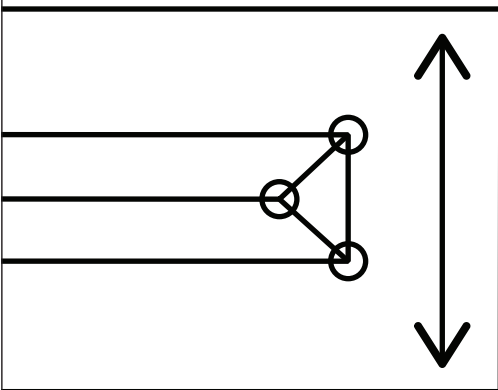
4A

5A

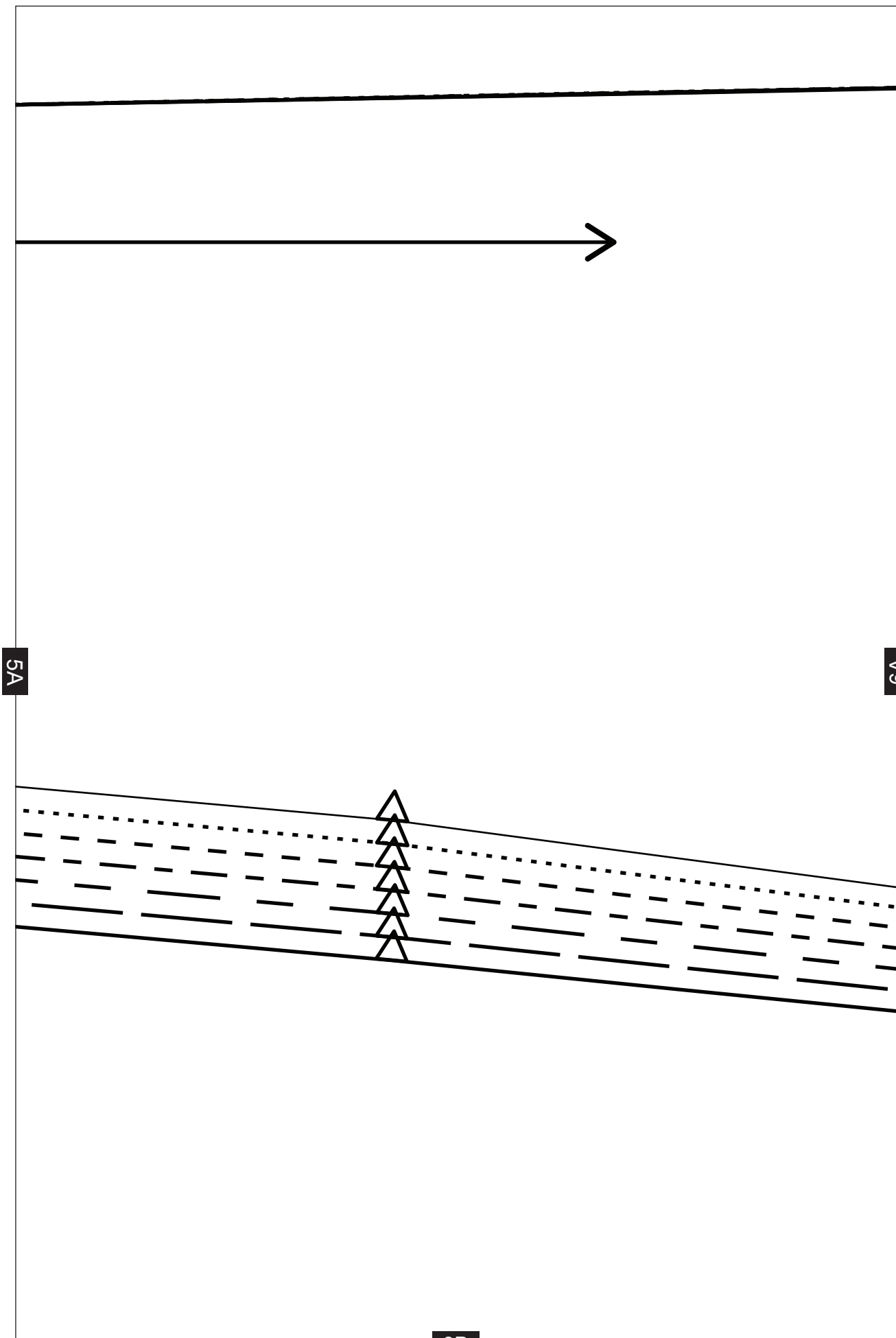


LEATHER JACKET

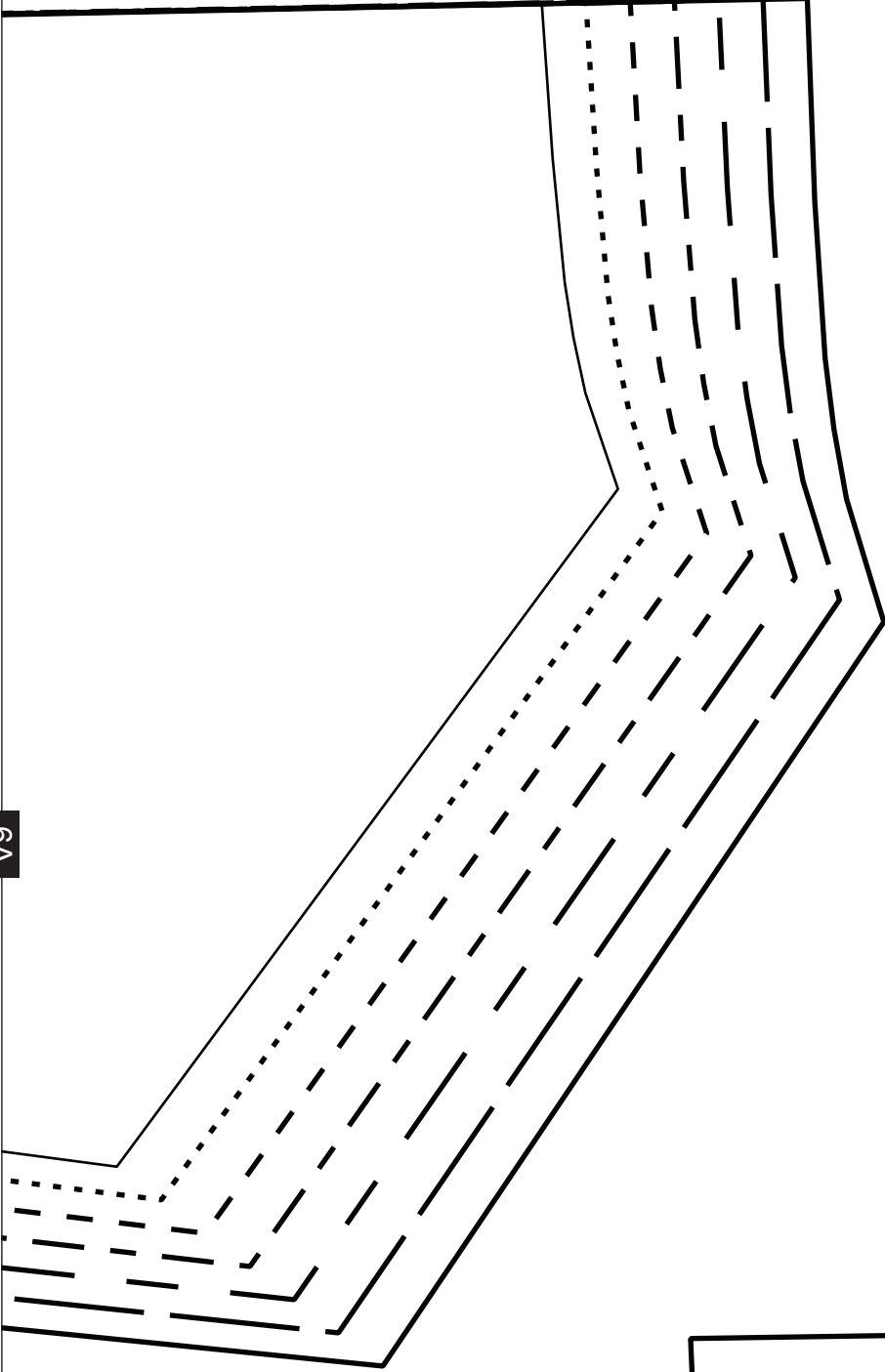
FRONT POCKET FACING –
CUT 2 IN LINING



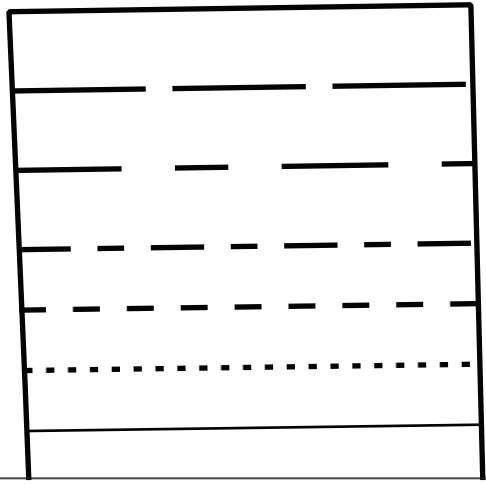
5B



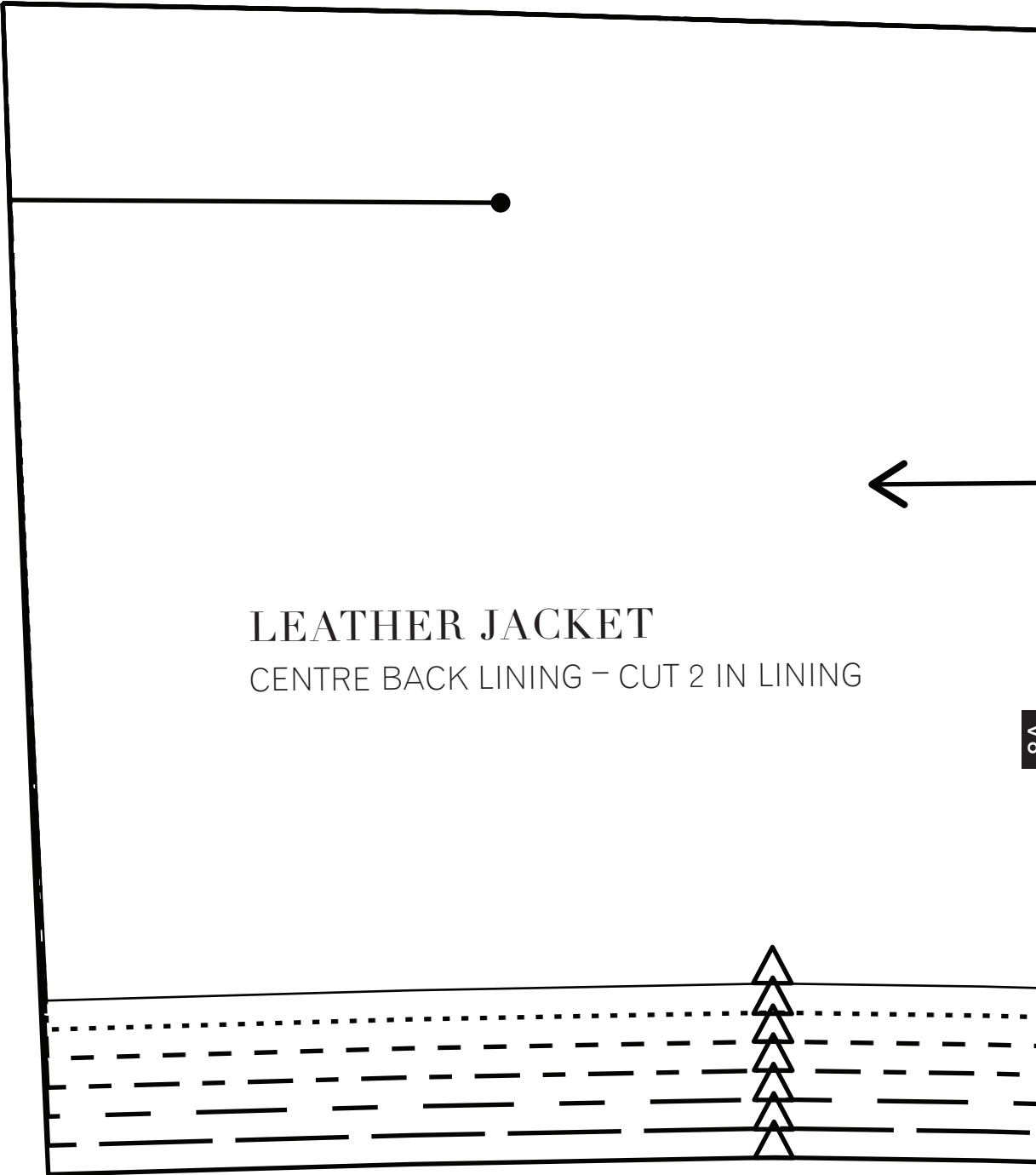
6A



7B



1B



LEATHER JACKET
CENTRE BACK LINING - CUT 2 IN LINING

8A

8B

2B



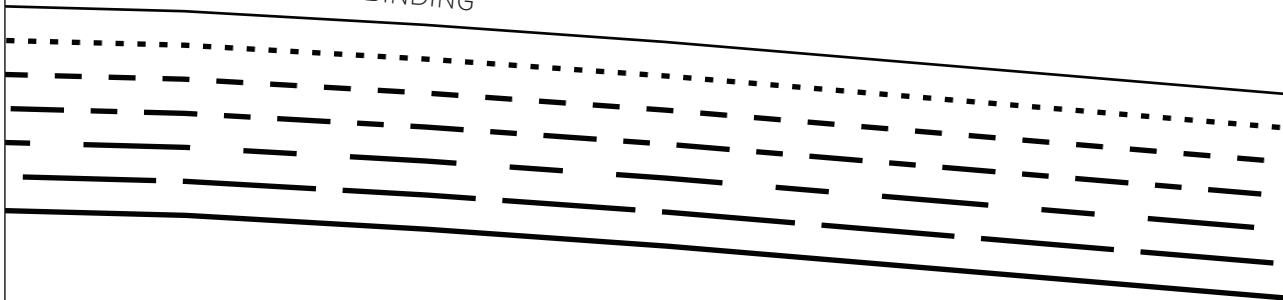
1-CM (3/8-IN) SEAM ALLOWANCE INCLUDED



8A

9A

SIDE BINDING



9B



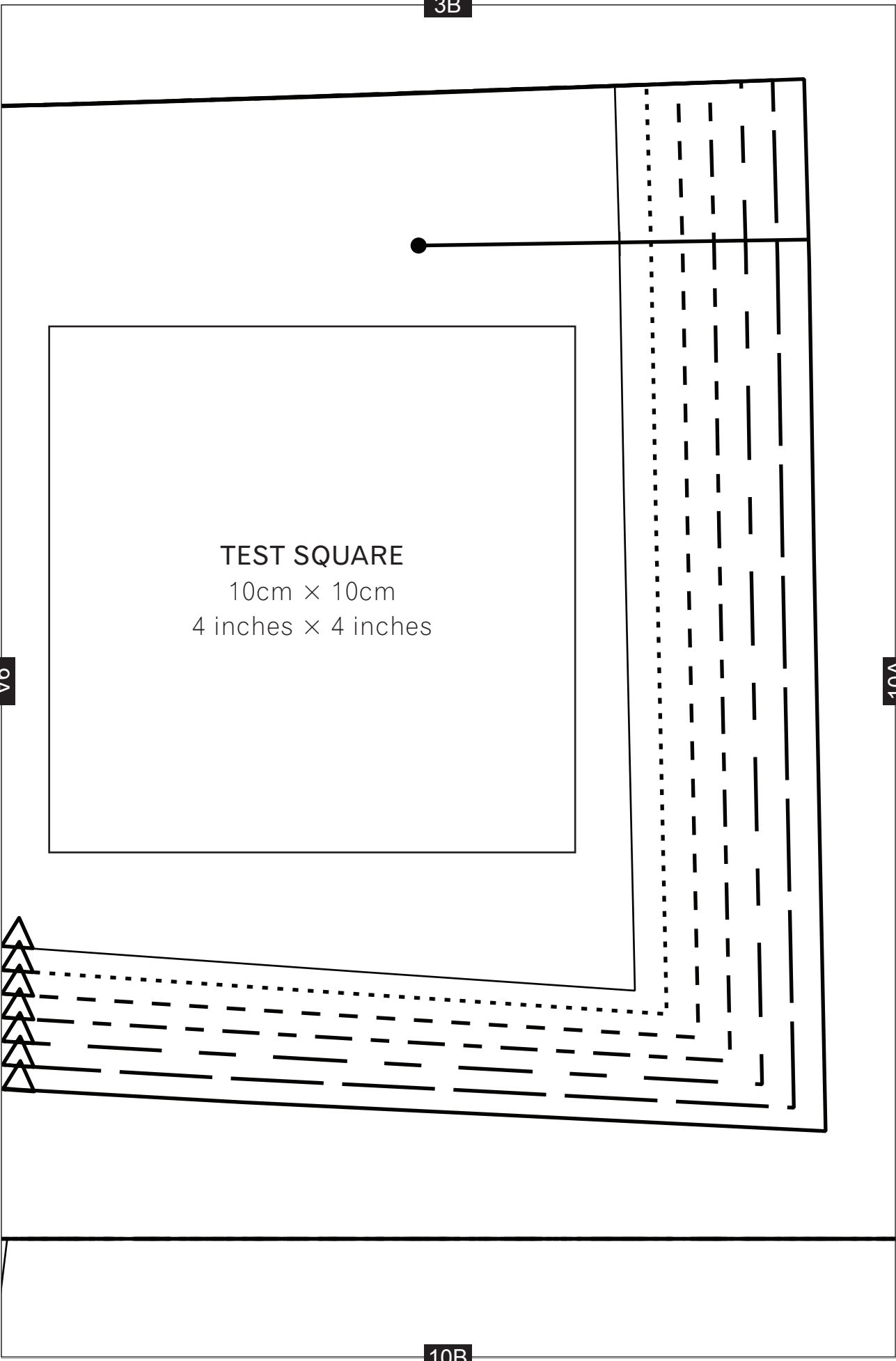
3B

TEST SQUARE
10cm × 10cm
4 inches × 4 inches

9A

10A

10B



4B

10A

CUT LINE FOR LEATHER

CUT LINE FOR LINING

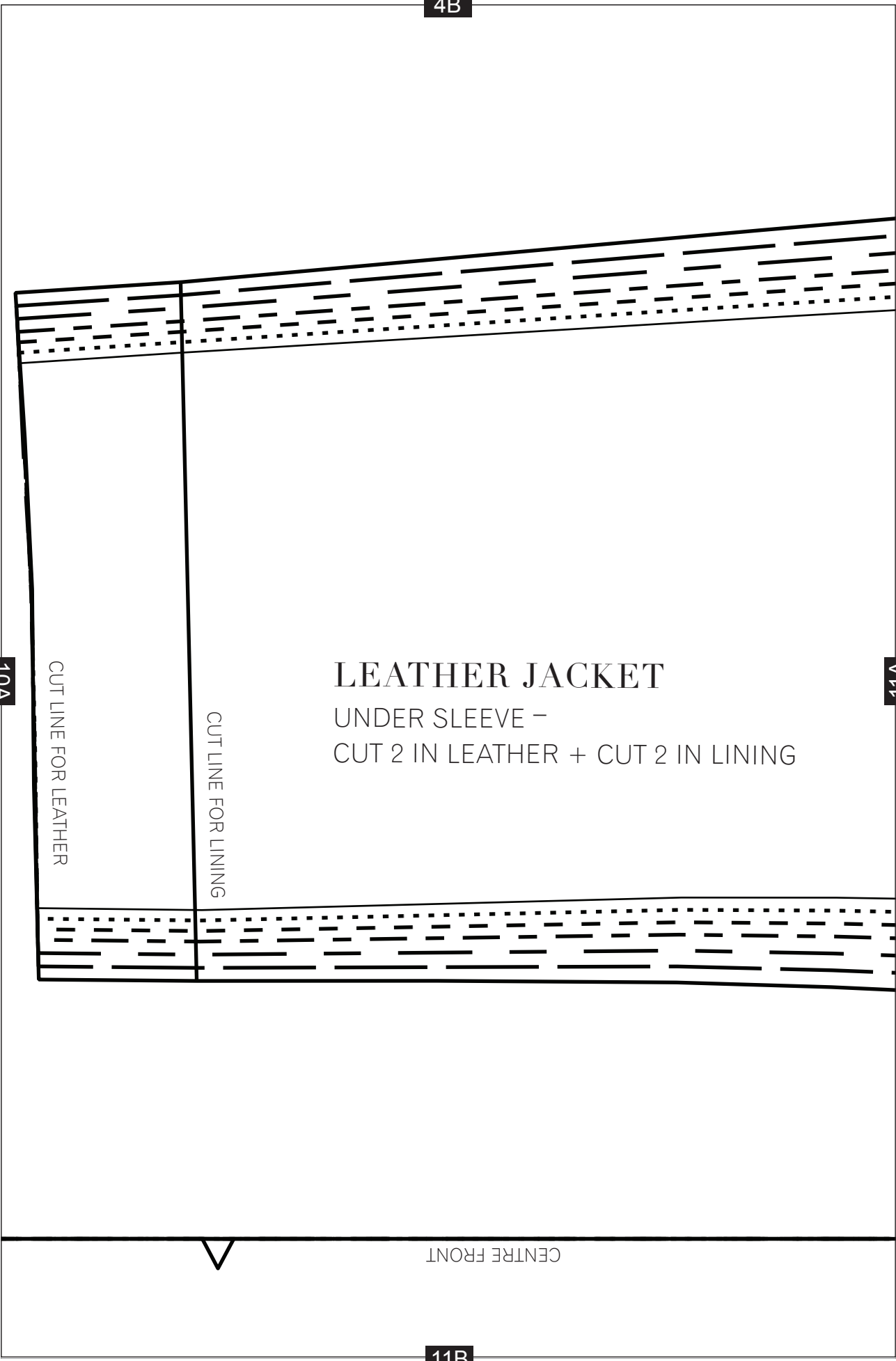
LEATHER JACKET

UNDER SLEEVE -
CUT 2 IN LEATHER + CUT 2 IN LINING

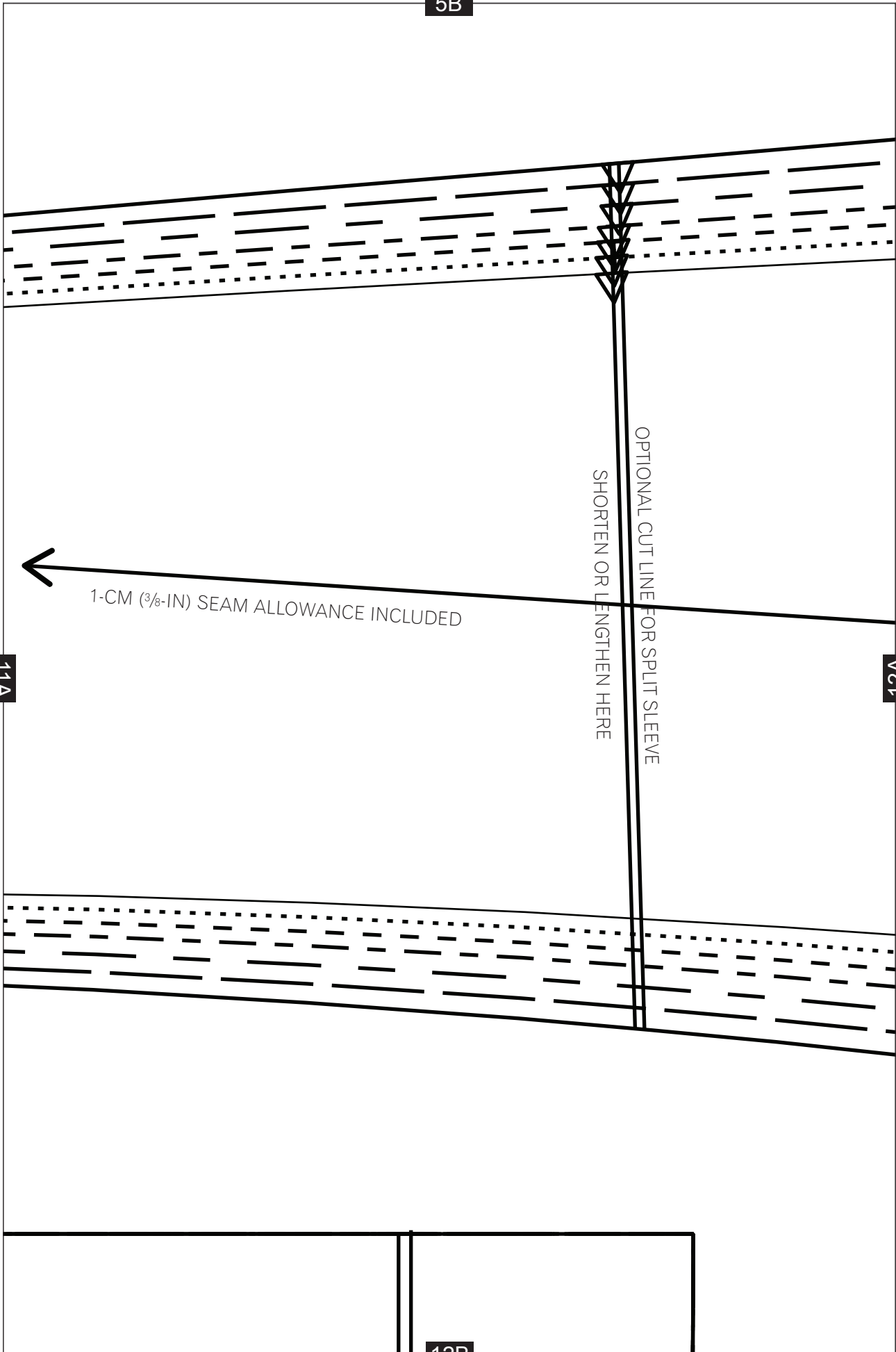
11A

CENTRE FRONT

11B



5B

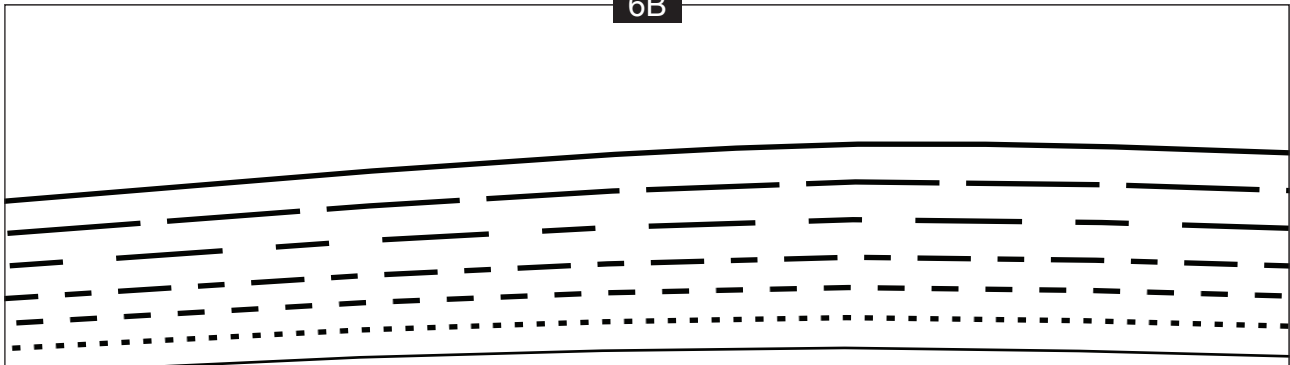


11A

12A

12B

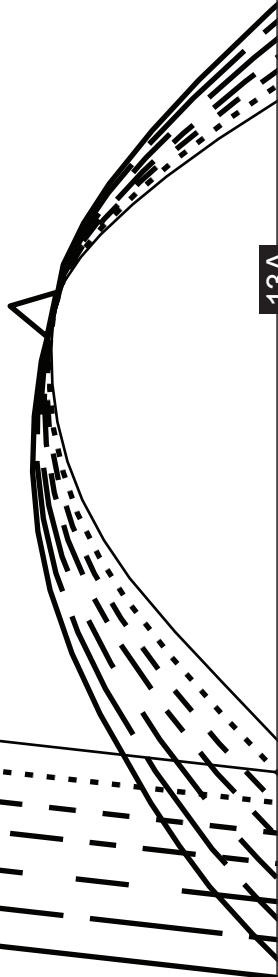
6B



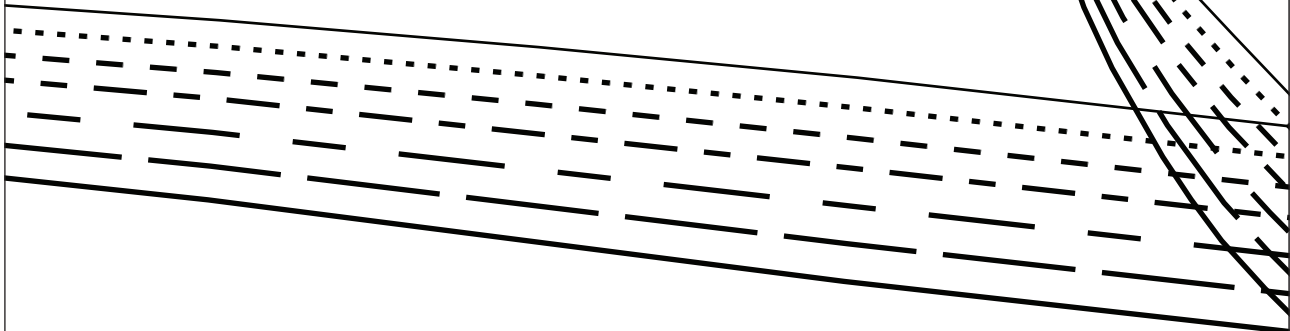
12A



13A



13B



LEATHER JACKET
WAIST FACING – CUT 2 IN LEATHER OR FABRIC
+ CUT 2 IN INTERFACING

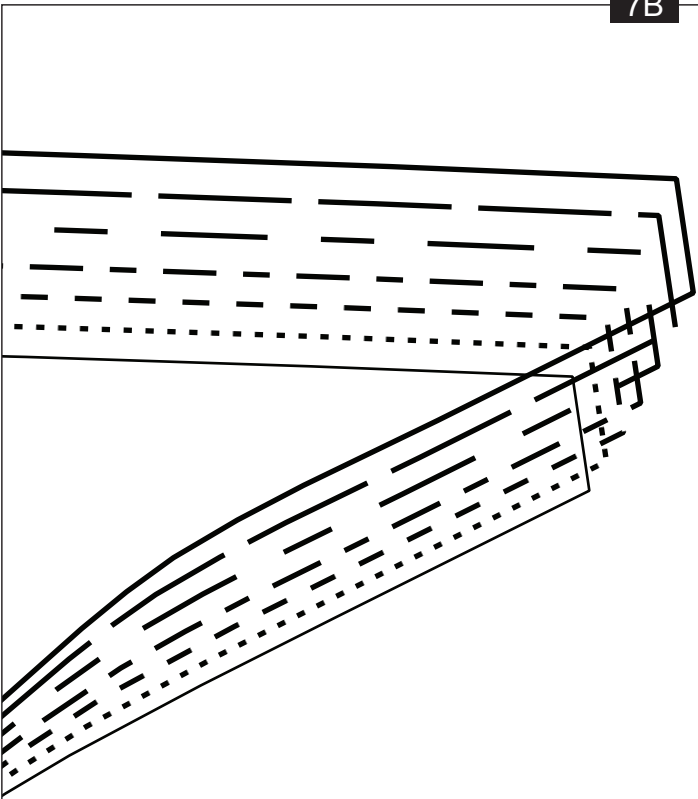
SIDE SEAM

1-CM ($\frac{3}{8}$ -IN) SEAM
ALLOWANCE
INCLUDED



7B

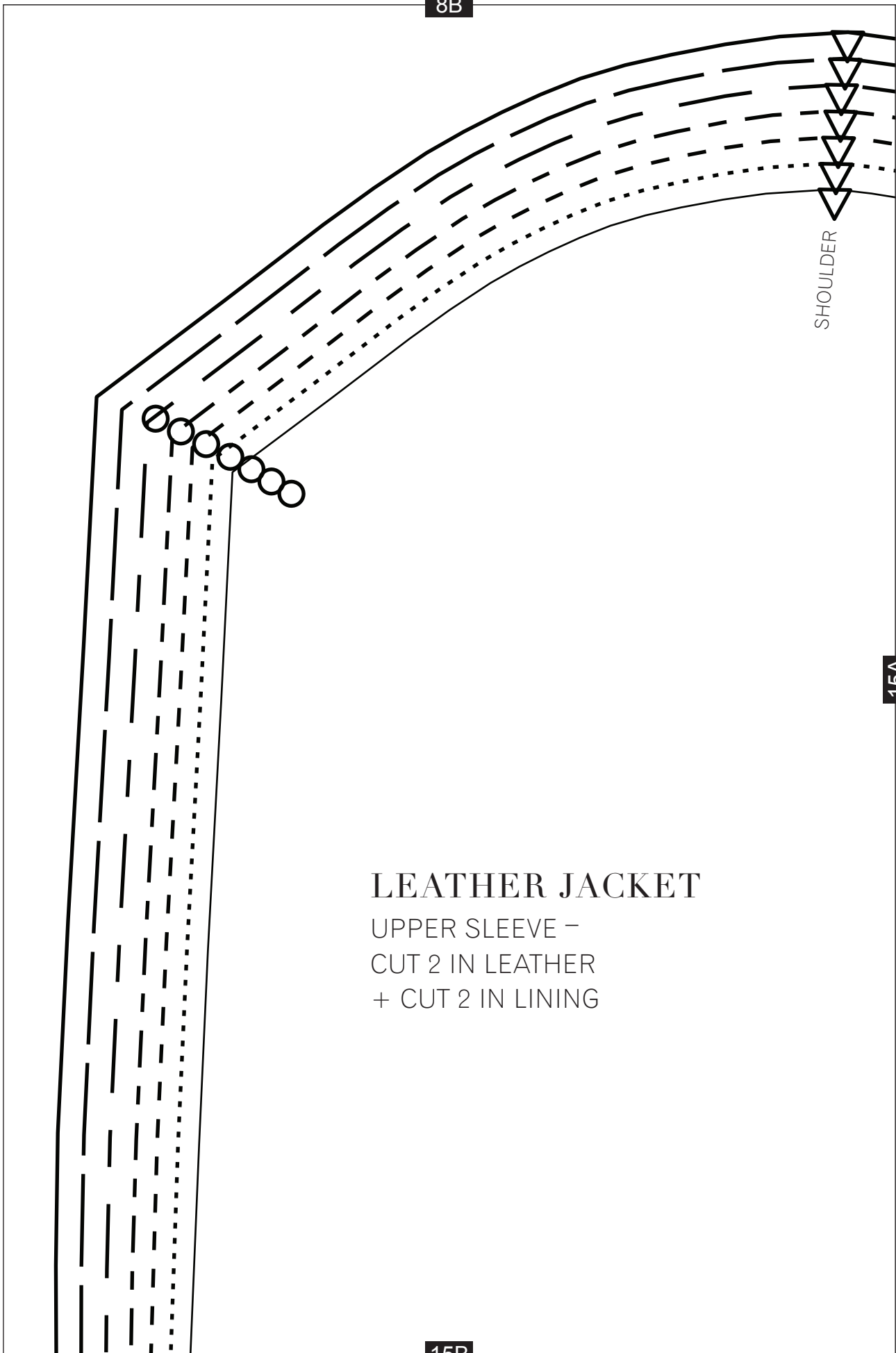
14B



13A



8B



15A

LEATHER JACKET

UPPER SLEEVE -
CUT 2 IN LEATHER
+ CUT 2 IN LINING

15B

9B

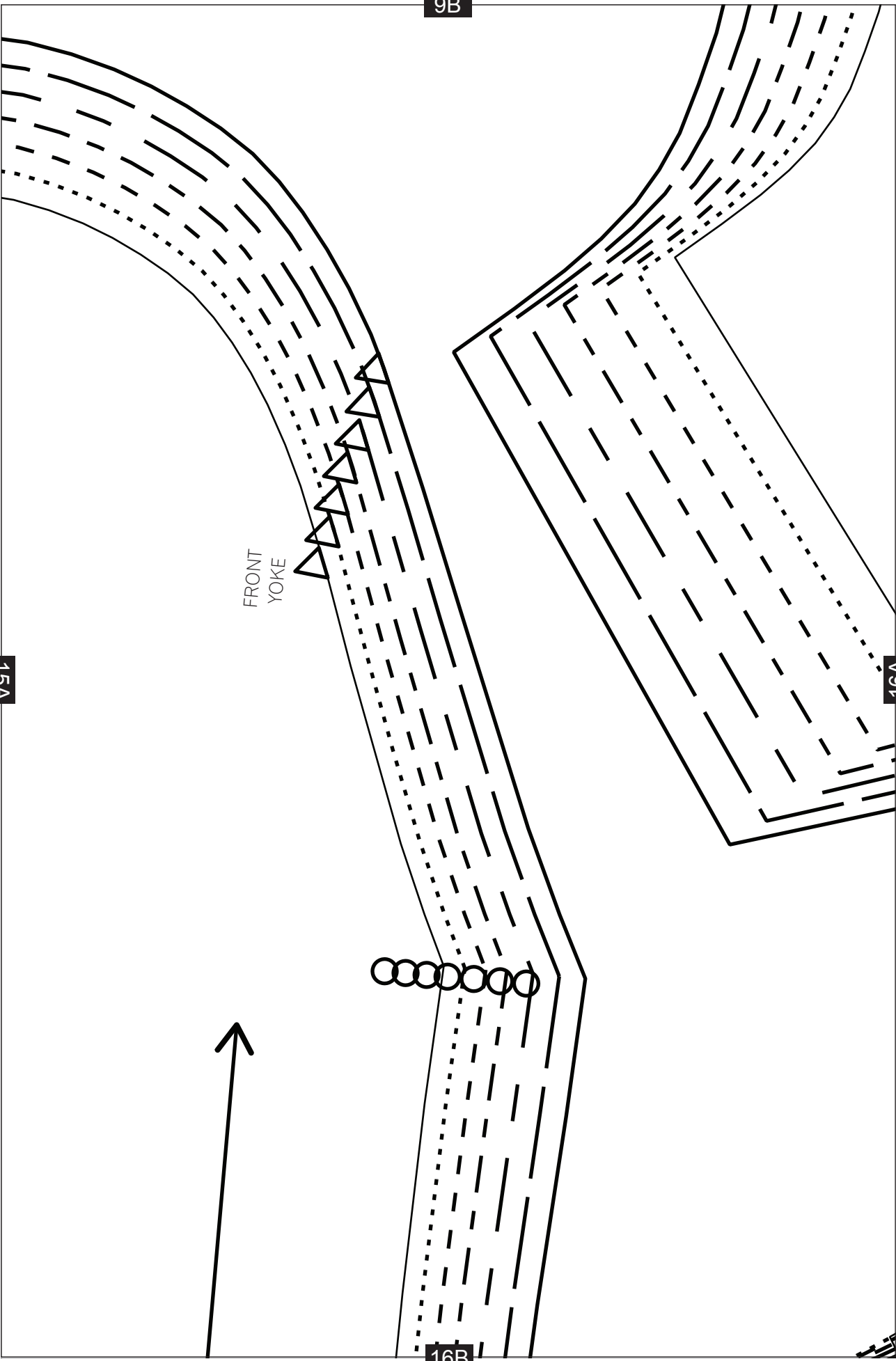
15A

16A

FRONT
YOKE



16B



10B



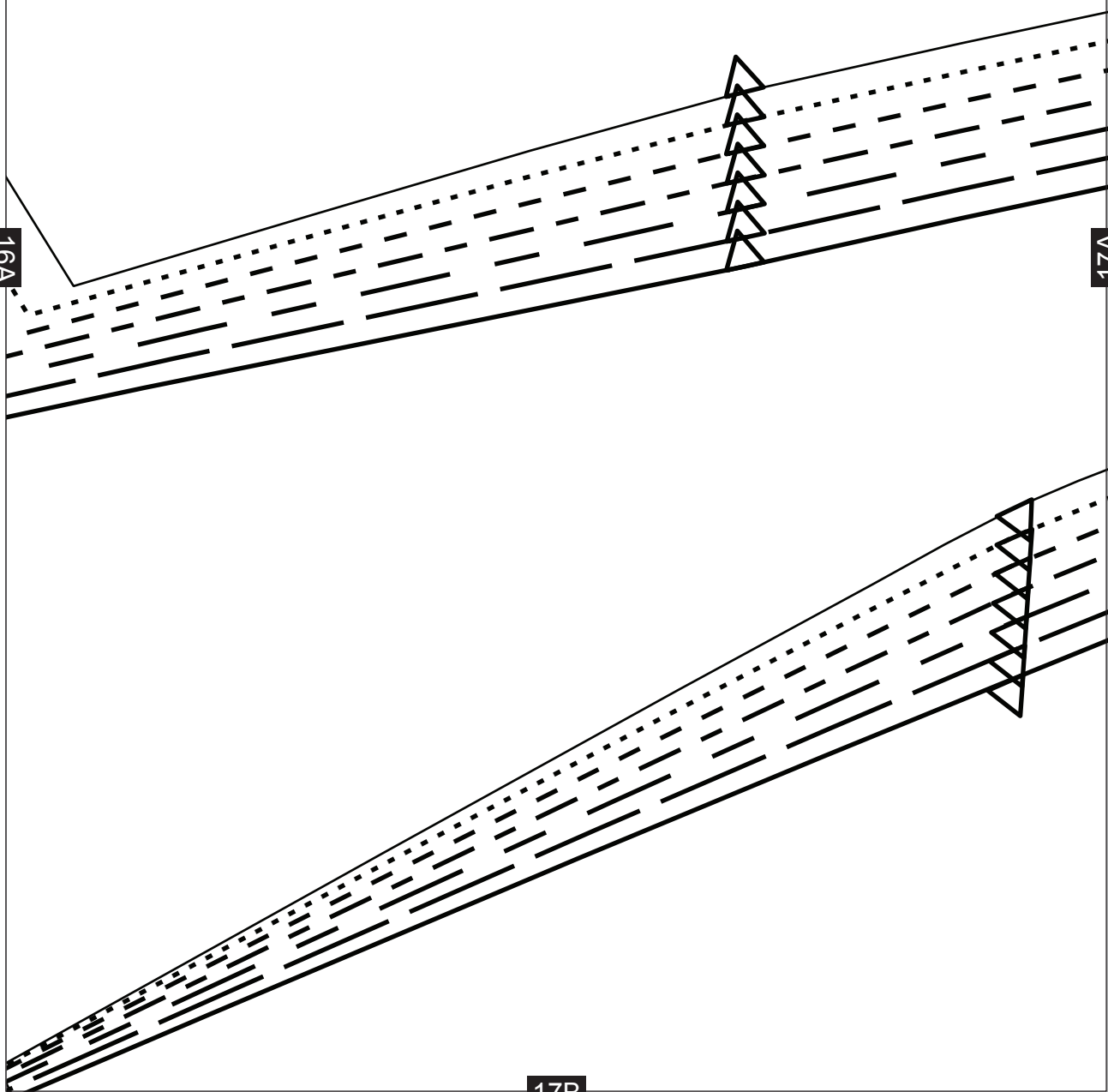
LEATHER JACKET

FRONT - CUT 2 IN LEATHER OR FABRIC

16A

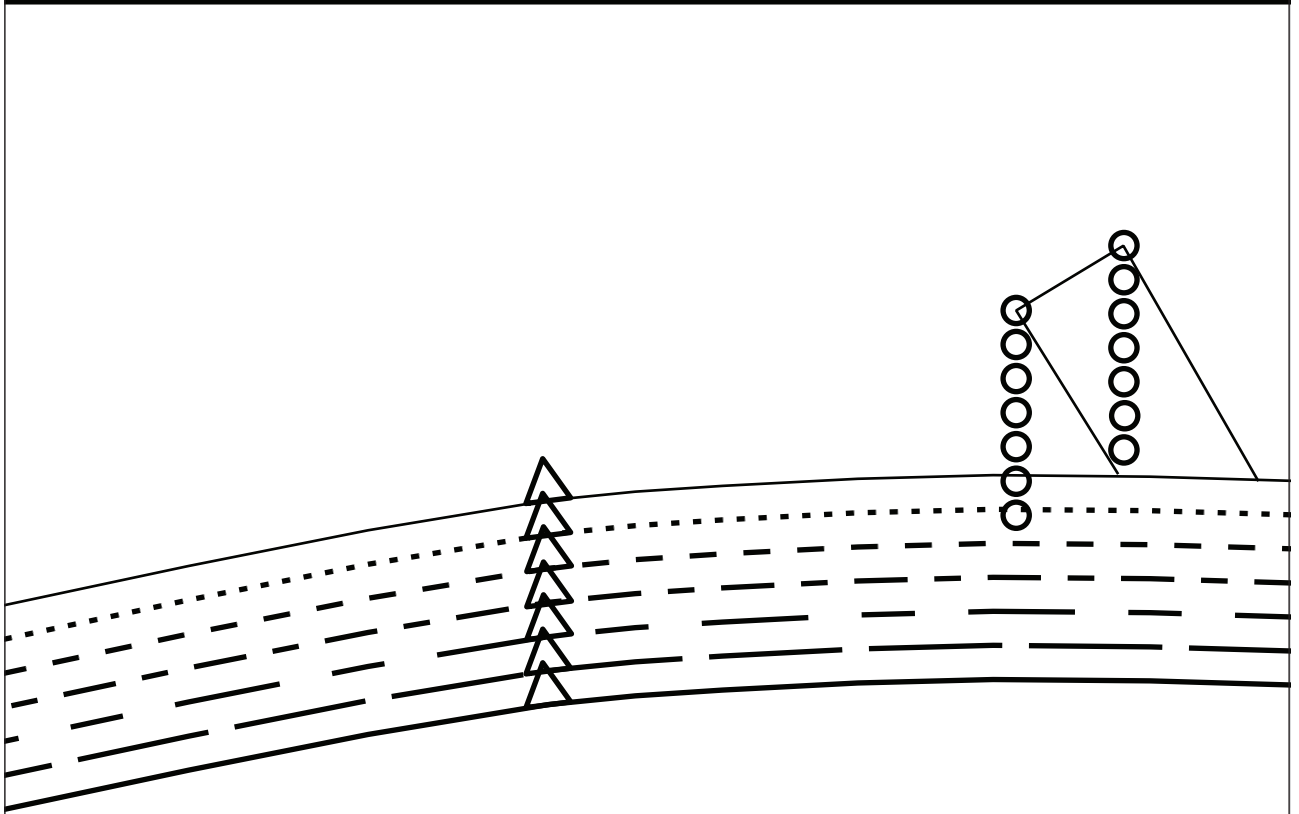
17A

17B



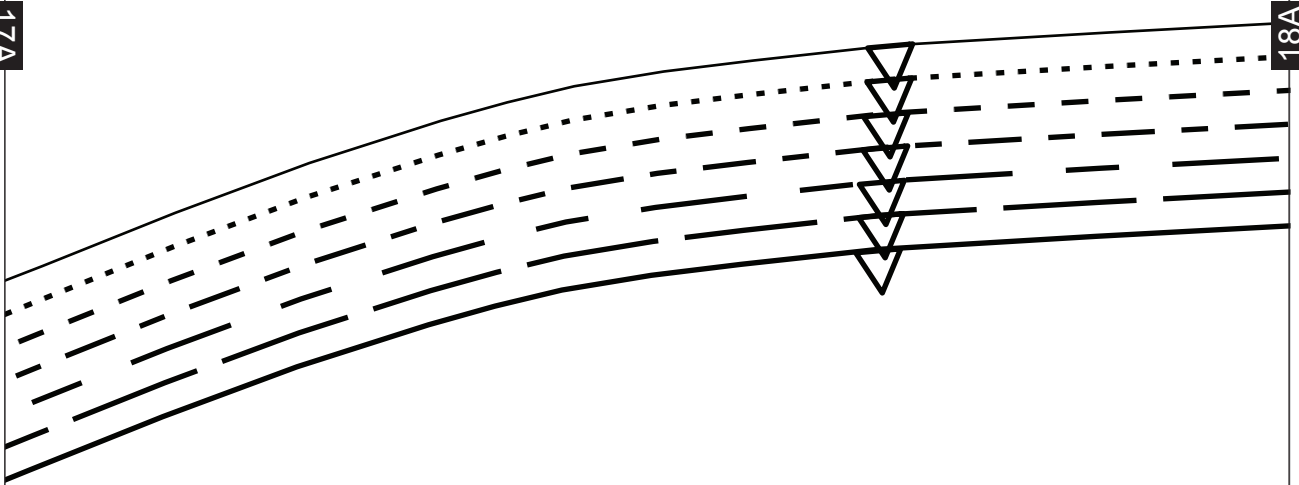
11B

1-CM (3/8-IN) SEAM ALLOWANCE INCLUDED



17A

18A

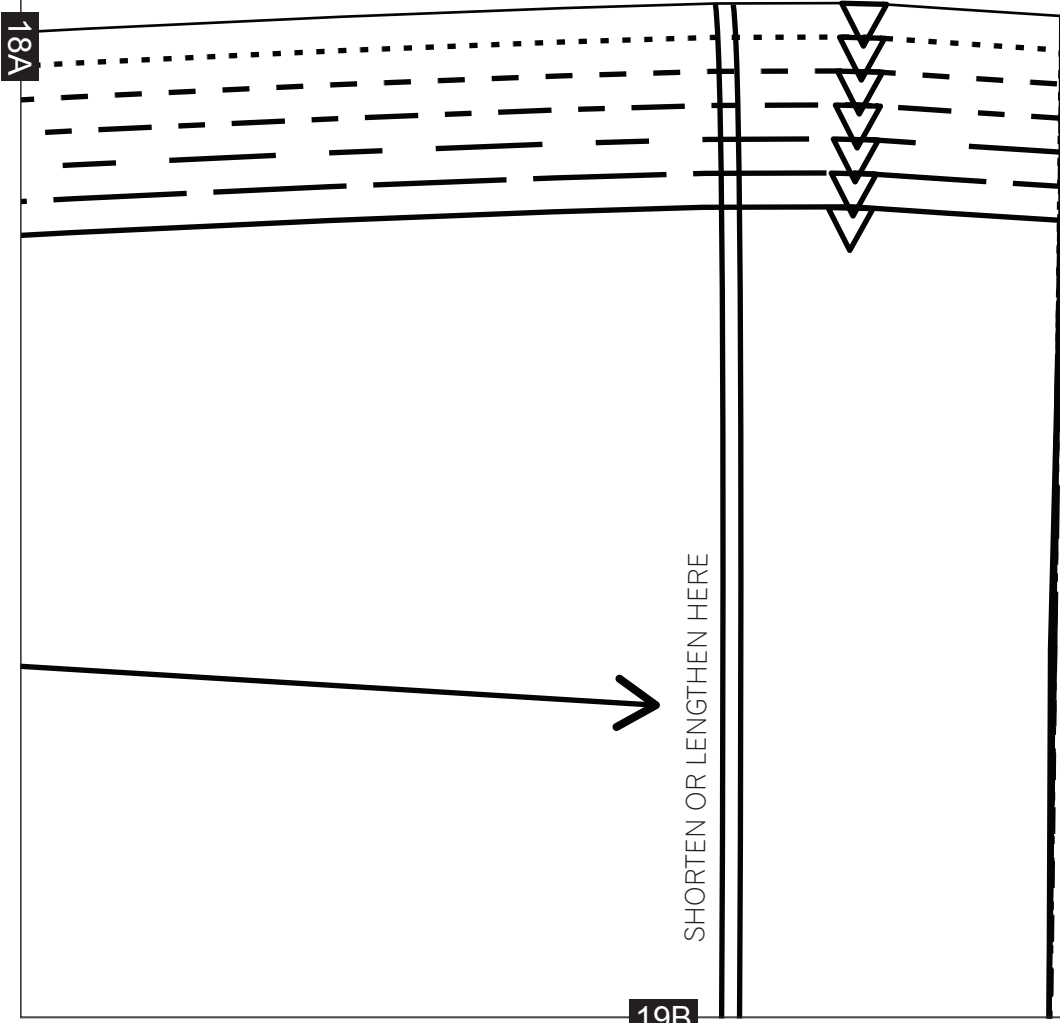
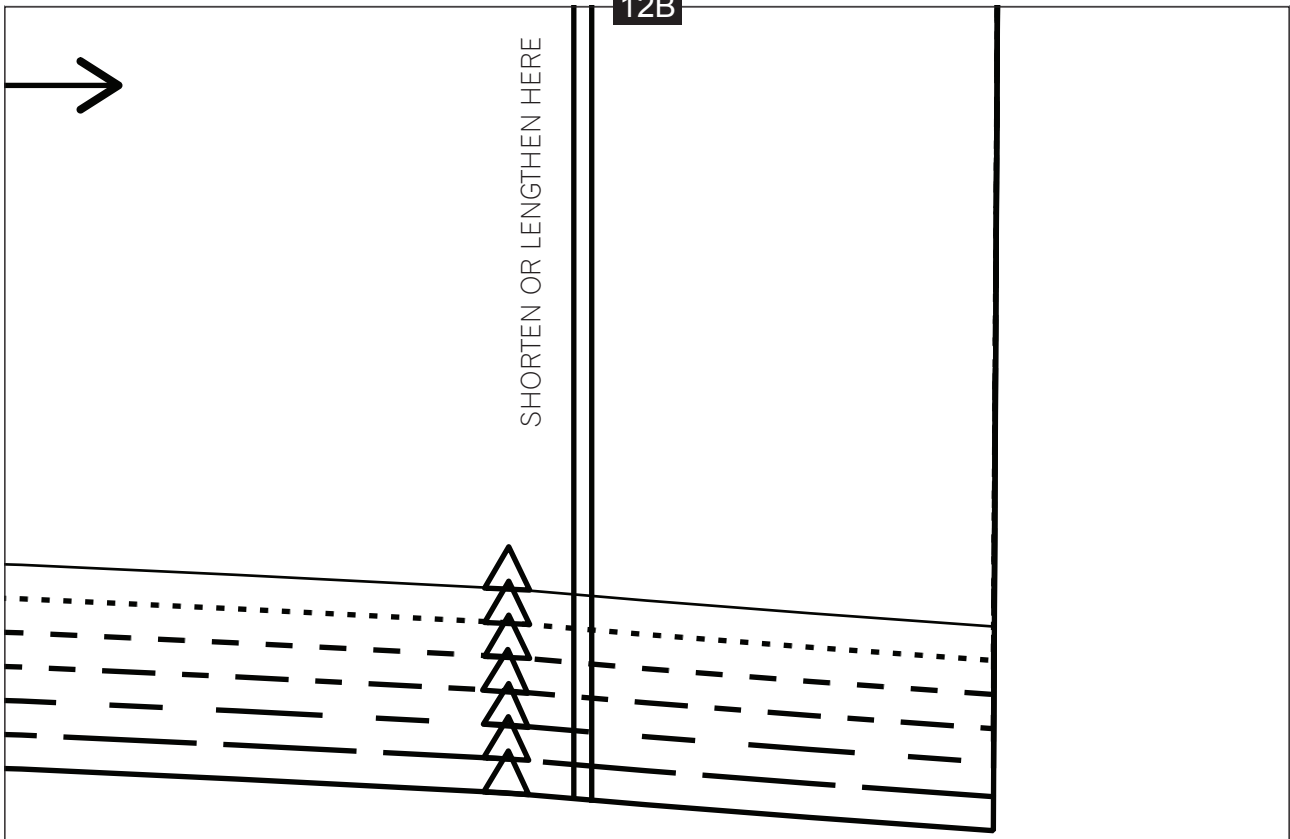


1-CM (3/8-IN) SEAM ALLOWANCE INCLUDED ←

LEATHER JACKET

SIDE FRONT LINING -
CUT 2 IN LINING

18B



13B

SHORTEN OR LENGTHEN HERE

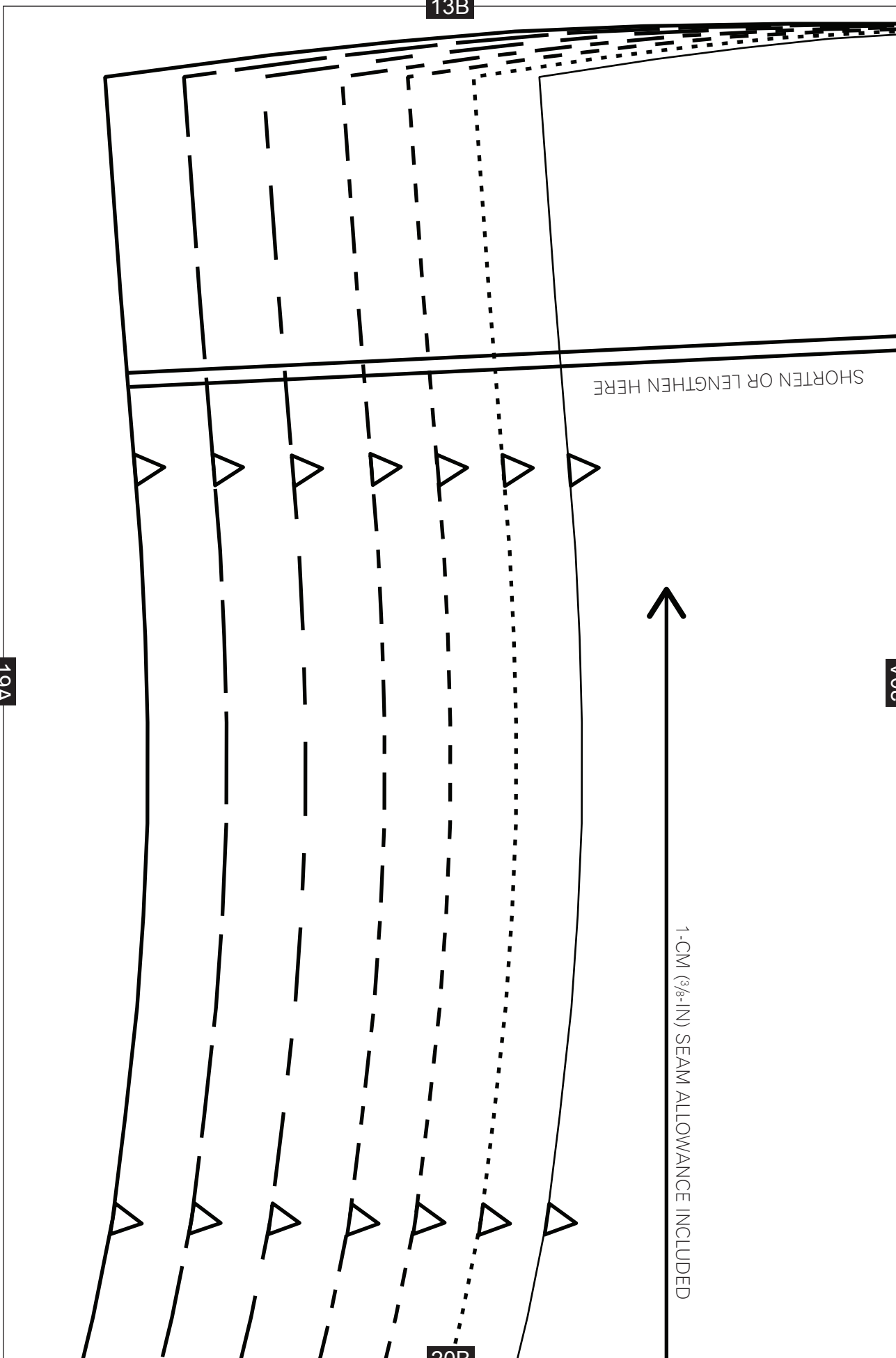
19A

20A

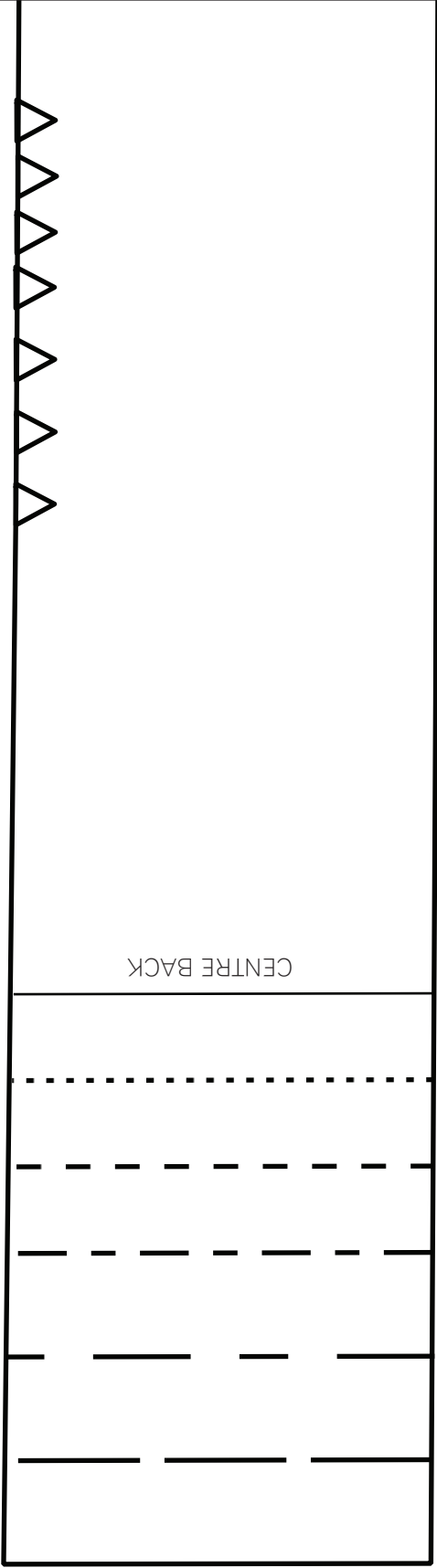


1-CM (3/8-IN) SEAM ALLOWANCE INCLUDED

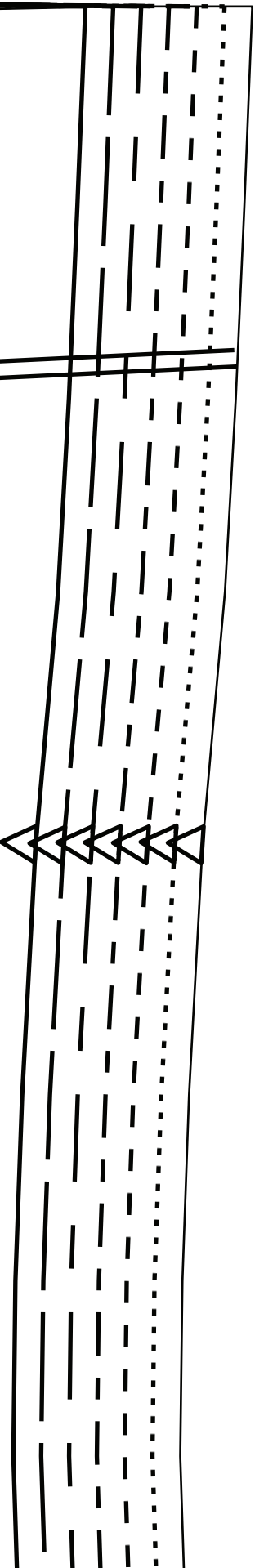
20B



14B



21B



20A

LEATHER JACKET
 SIDE BACK – CUT 2 IN LEATHER OR FABRIC

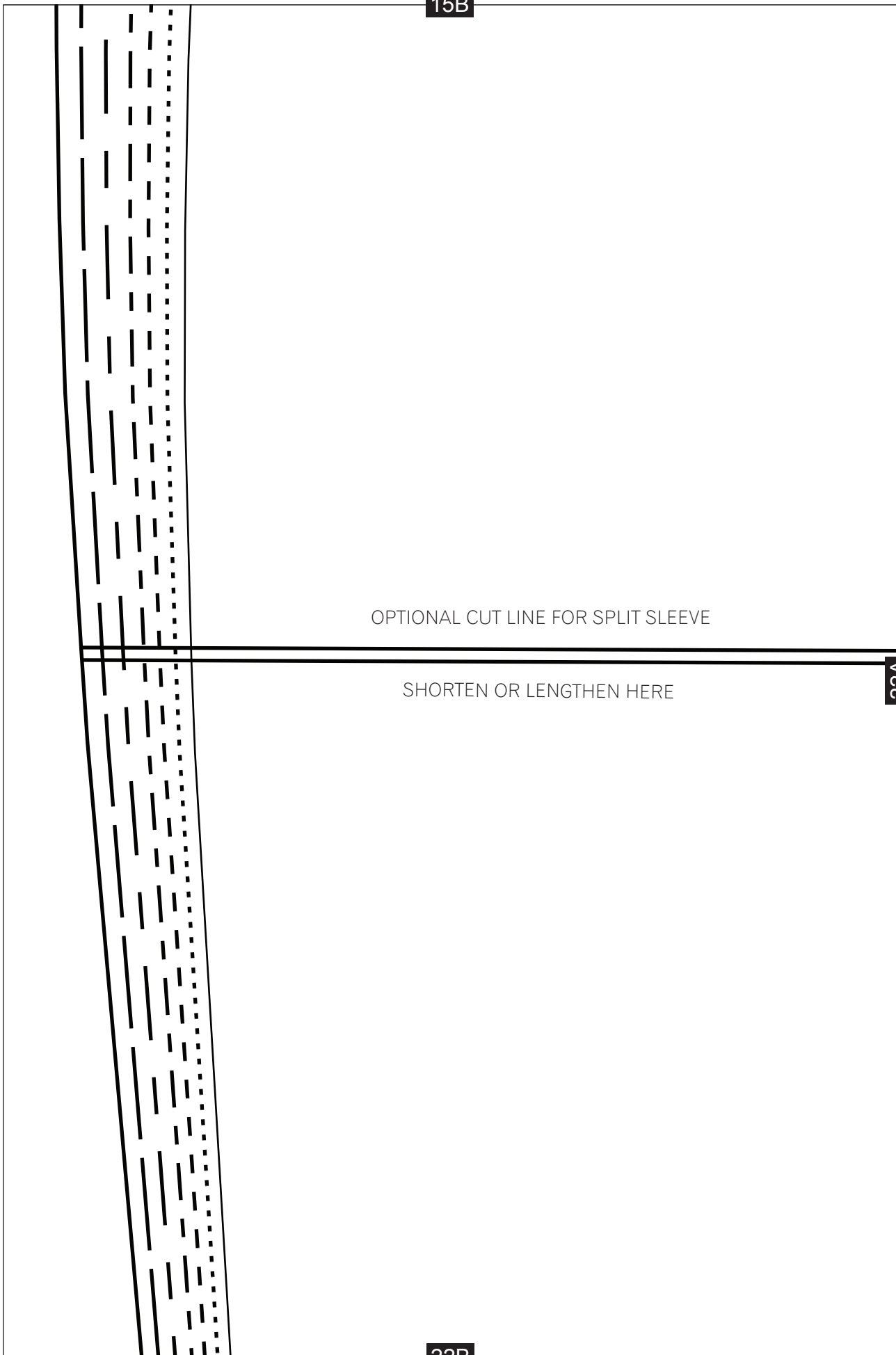
15B

OPTIONAL CUT LINE FOR SPLIT SLEEVE

SHORTEN OR LENGTHEN HERE

22A

22B



16B

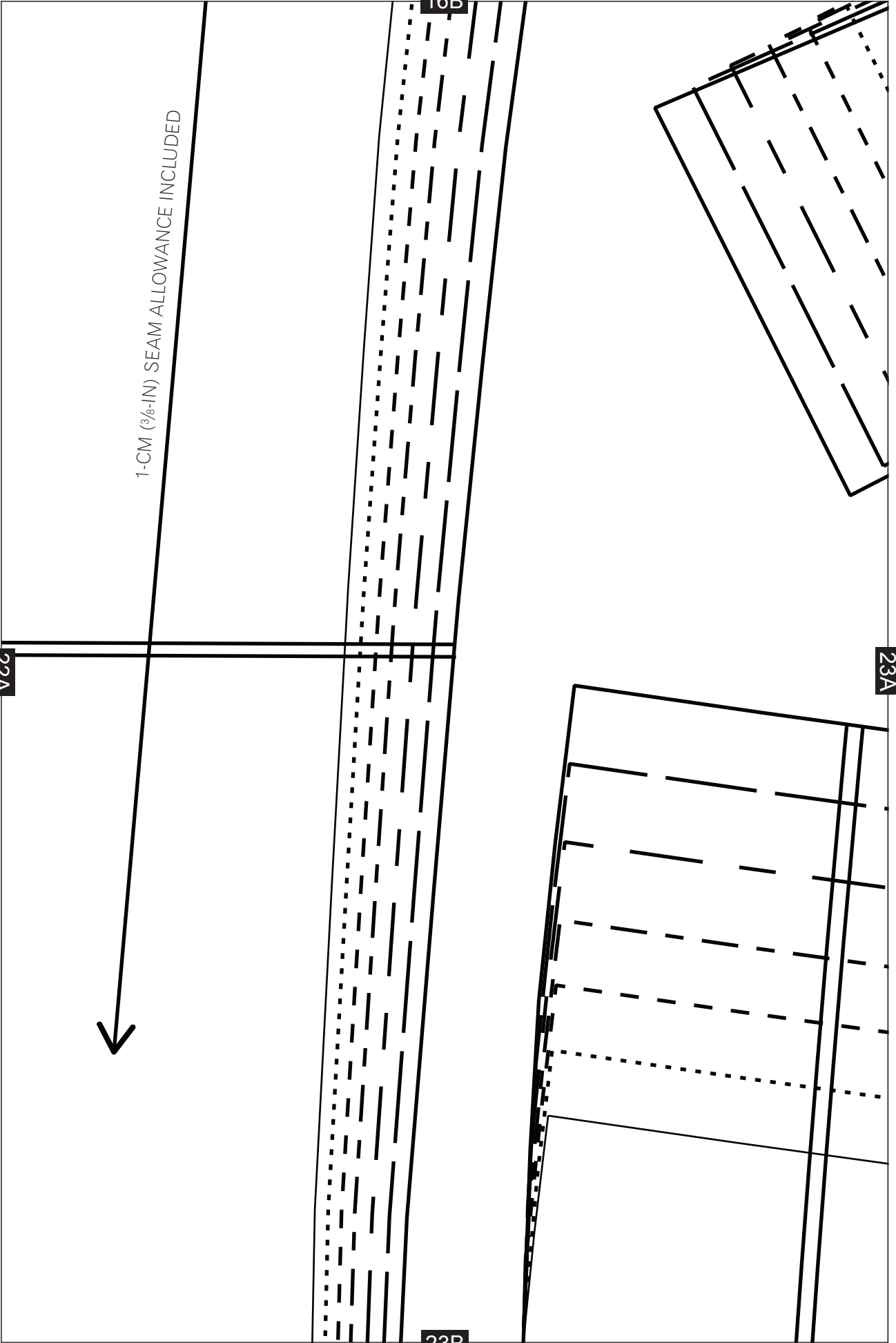
1-CM (3/8-IN) SEAM ALLOWANCE INCLUDED

22A

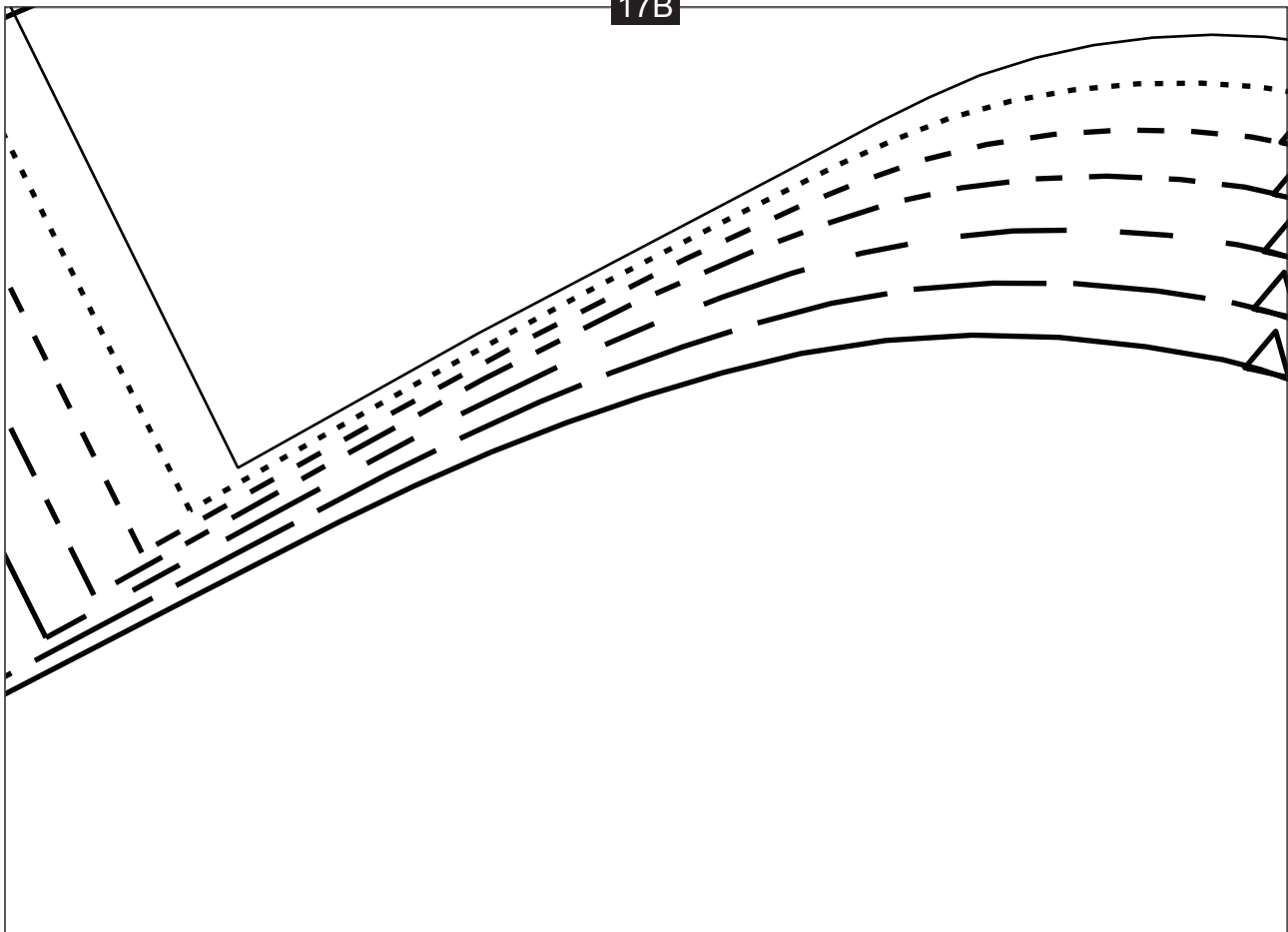


23A

23B

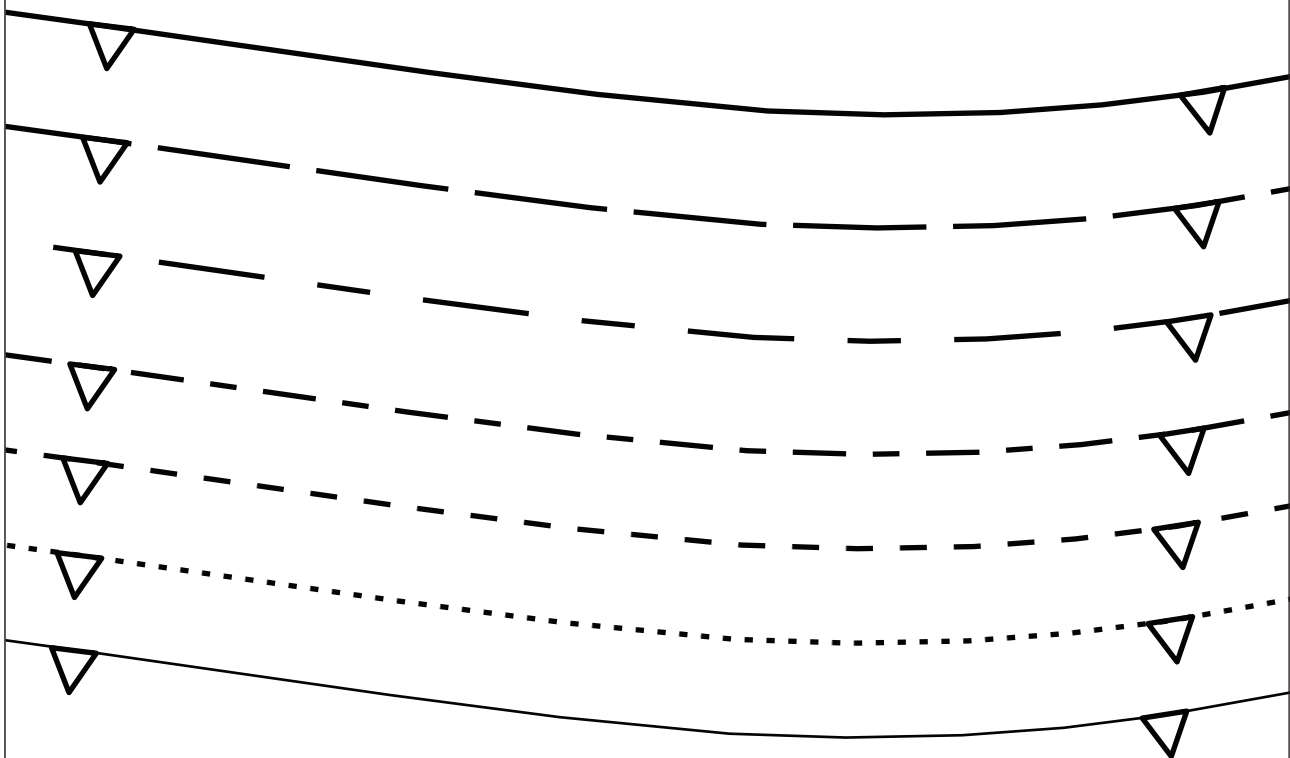


17B



23A

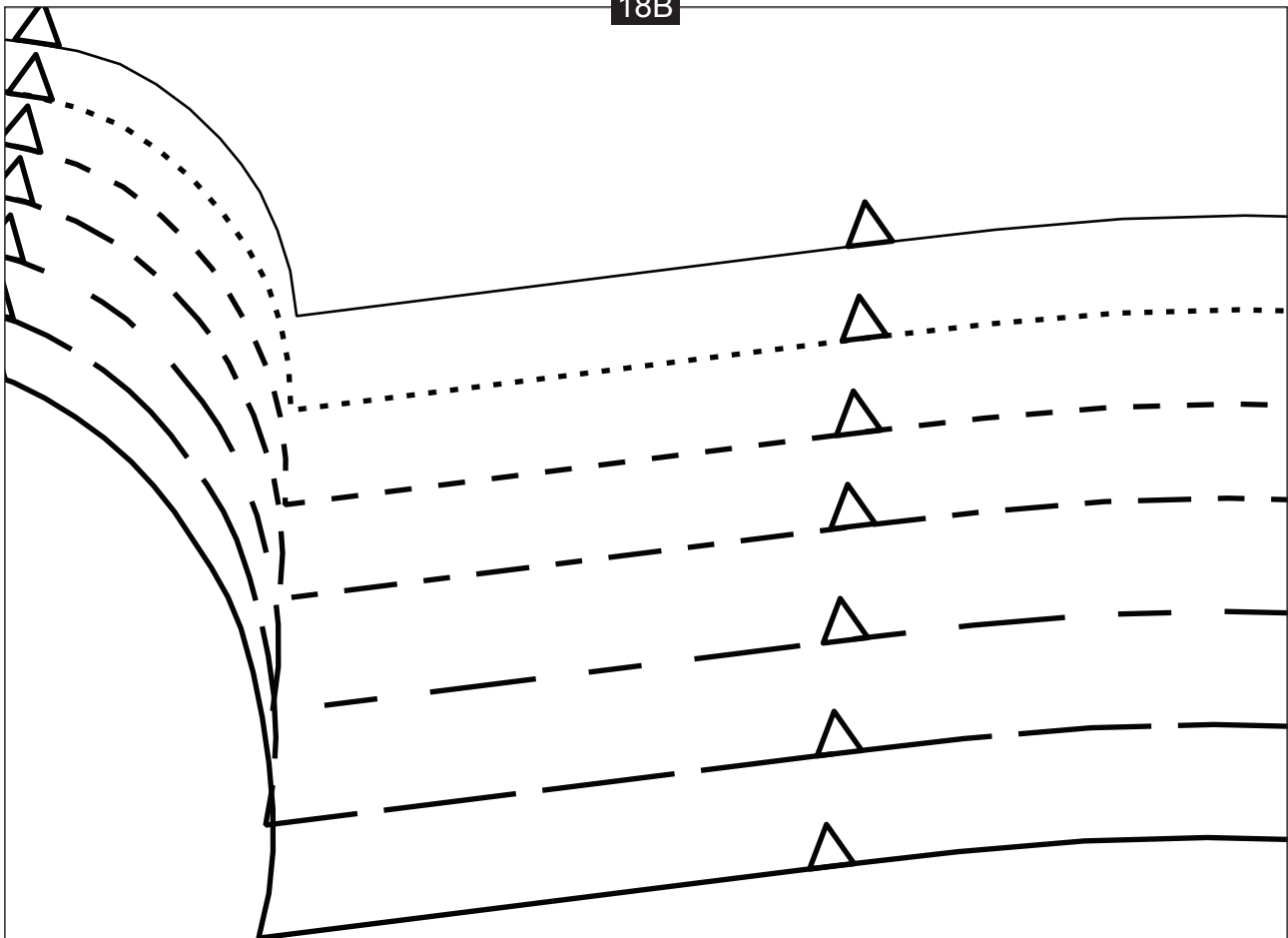
24A



oo
oooo

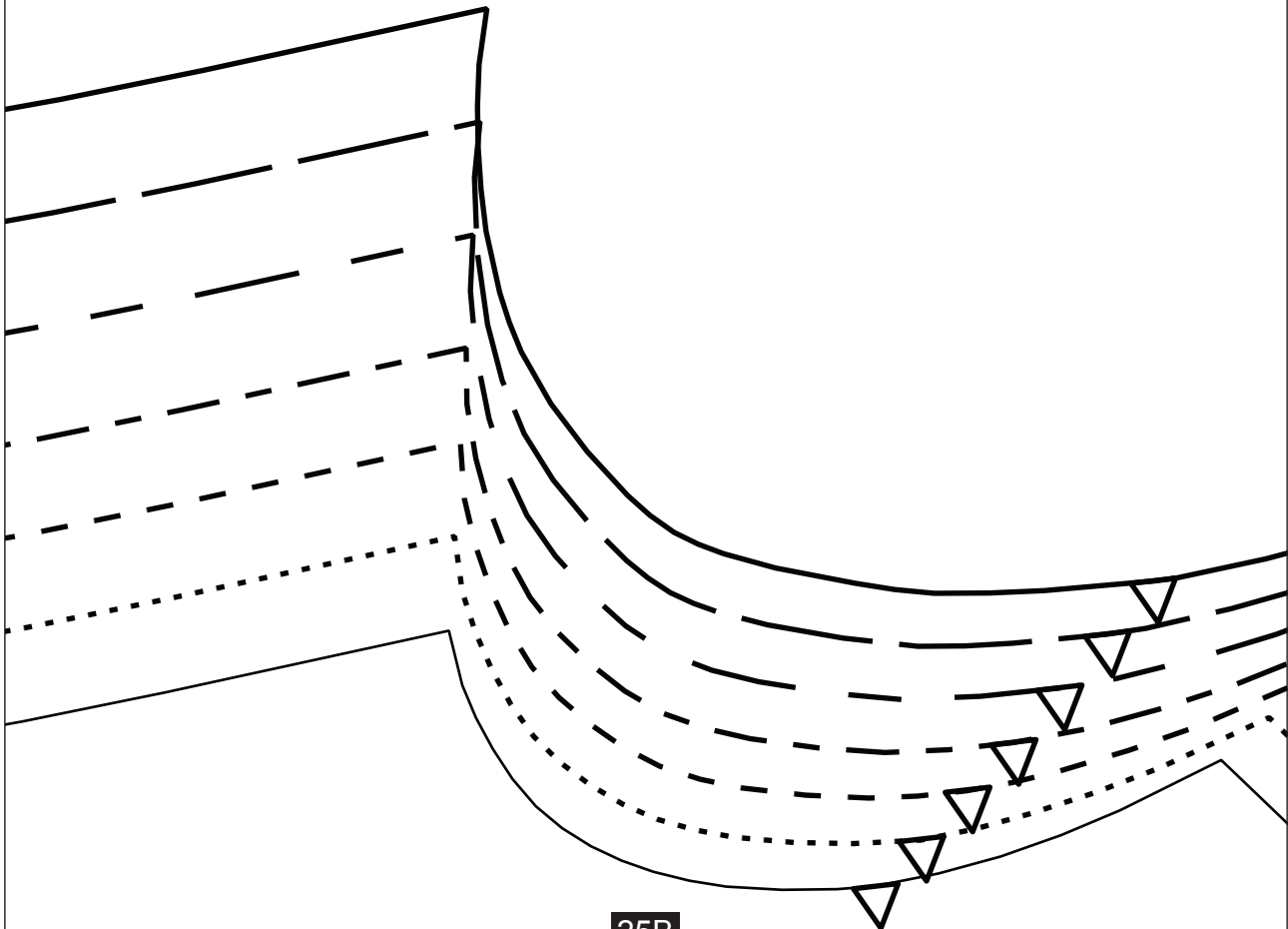
24B

18B



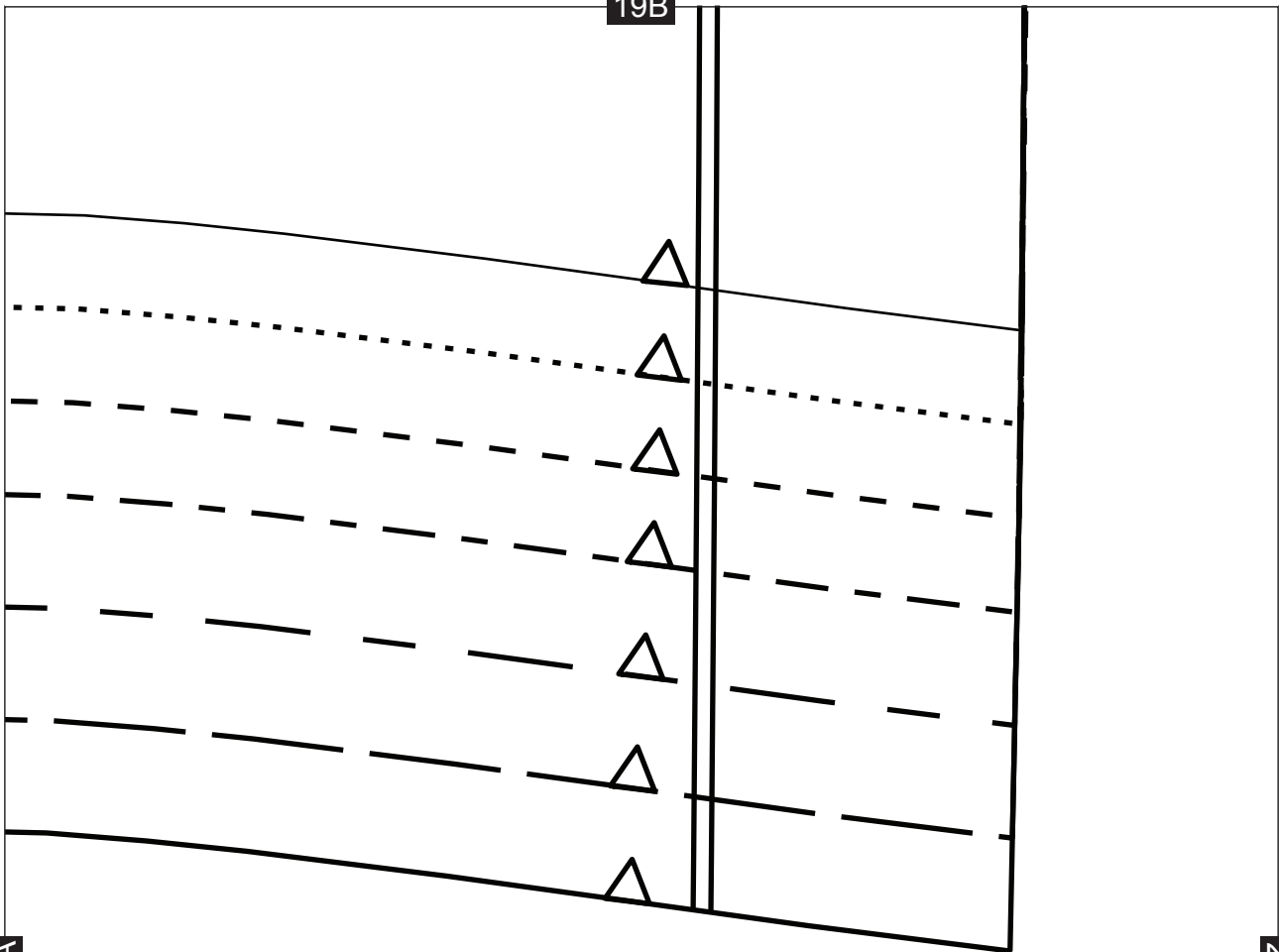
24A

25A



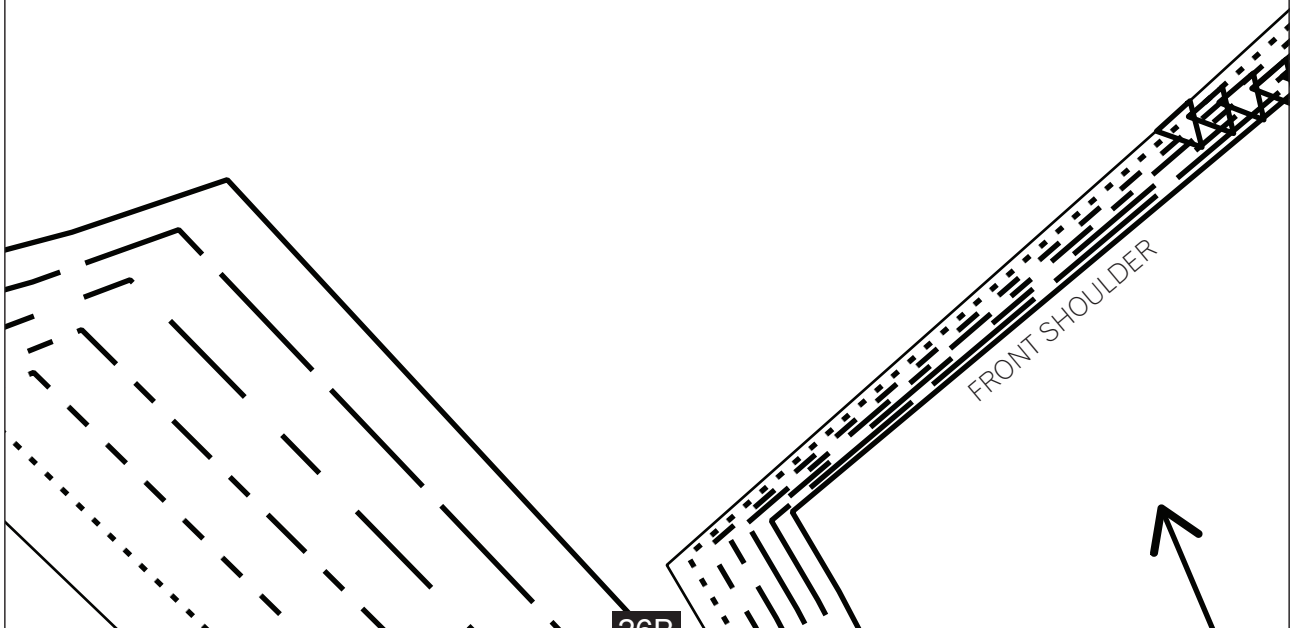
25B

19B



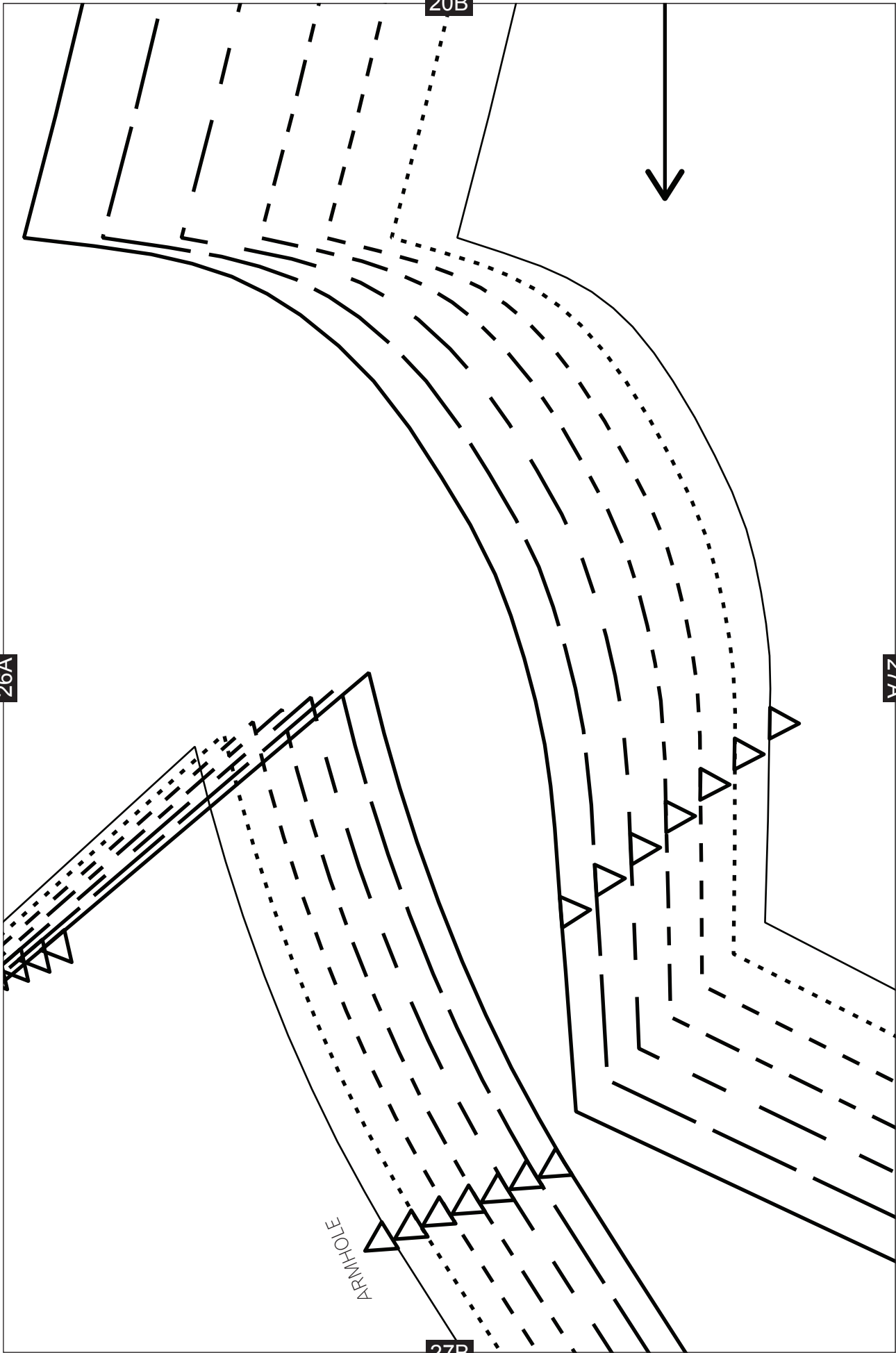
25A

26A



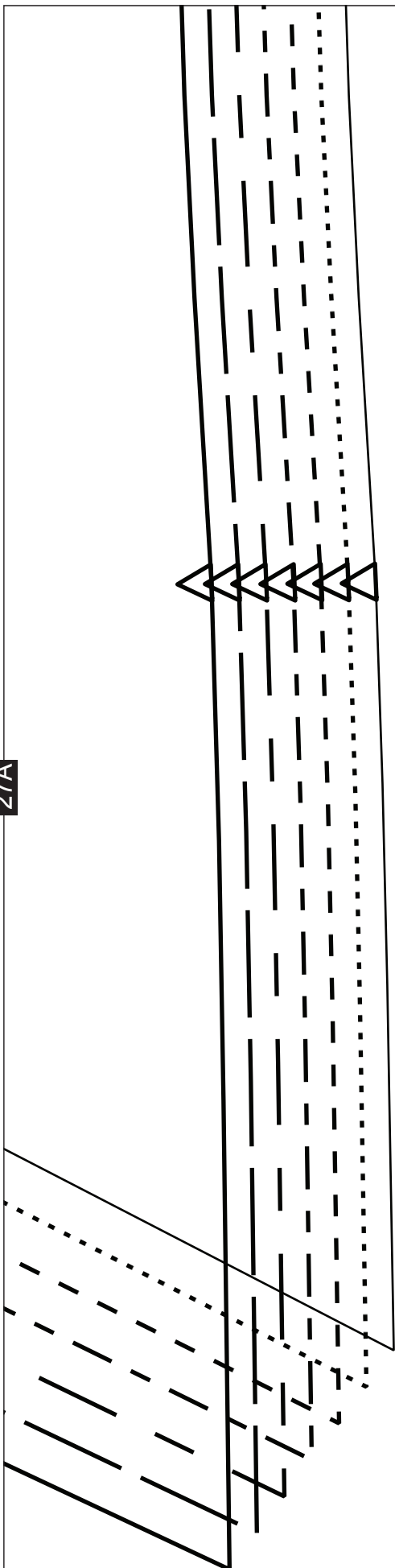
26B

FRONT SHOULDER



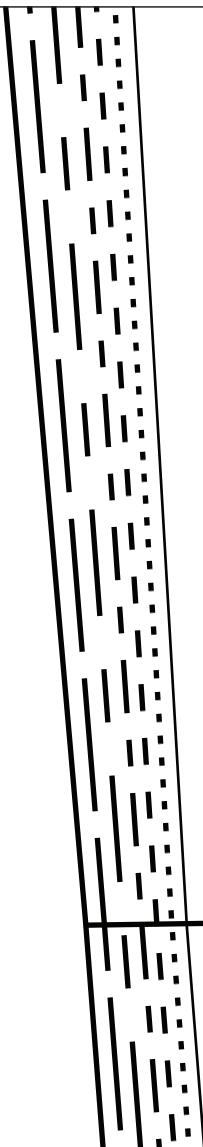
21B

27A



28B

22B

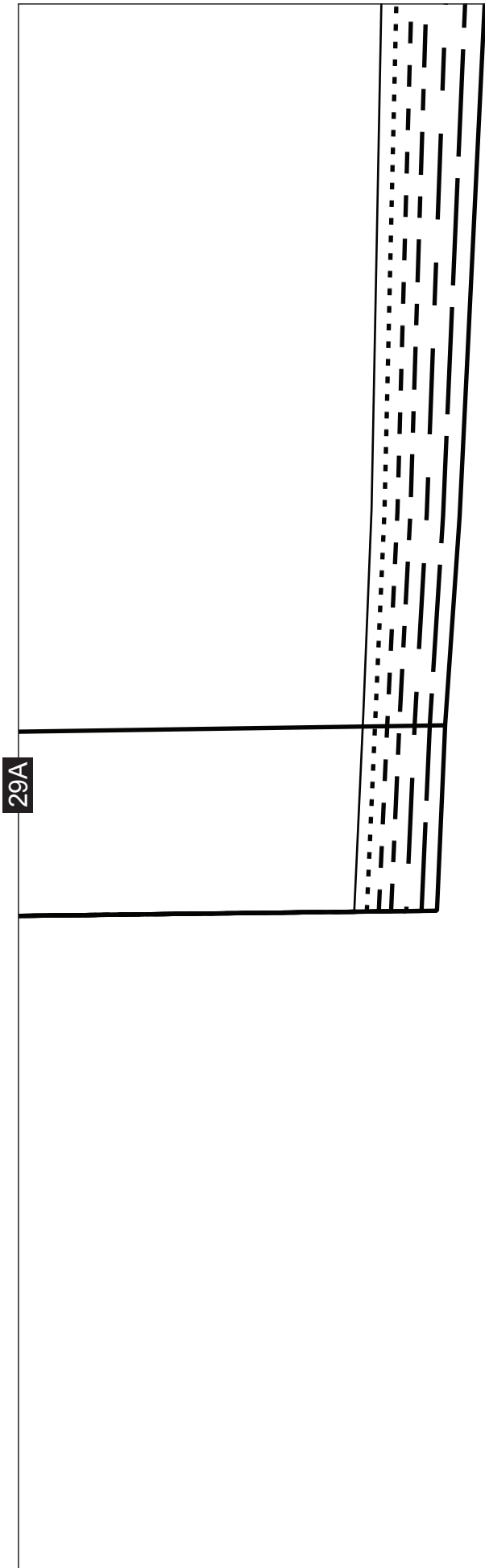


CUT LINE FOR LINING

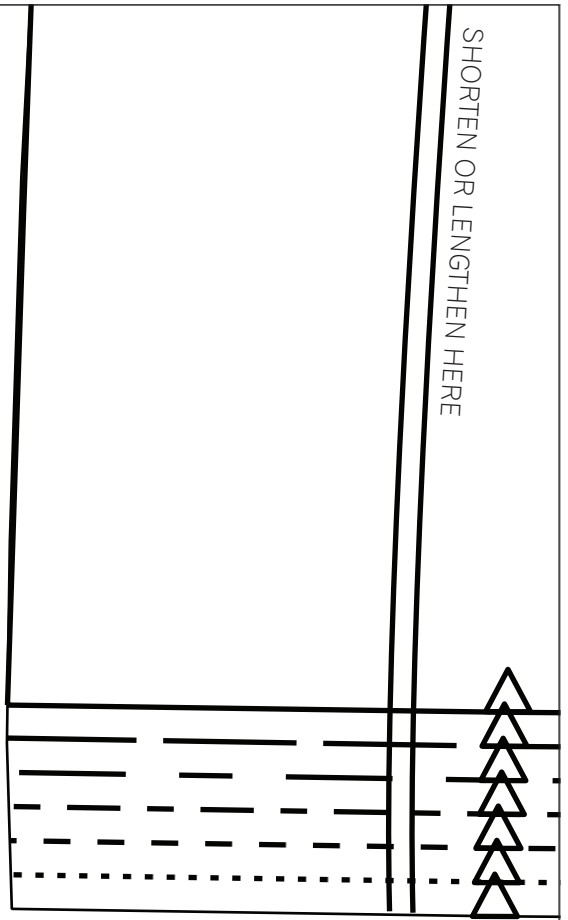
29A

CUT LINE FOR LEATHER

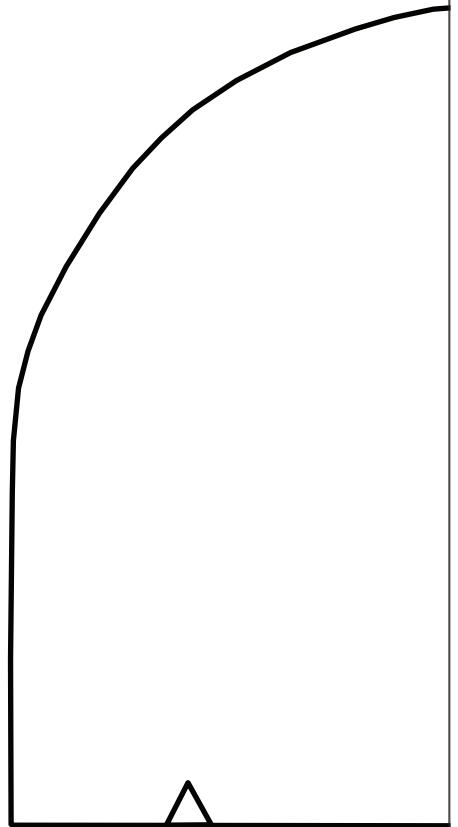
29B



23B



30A



30B

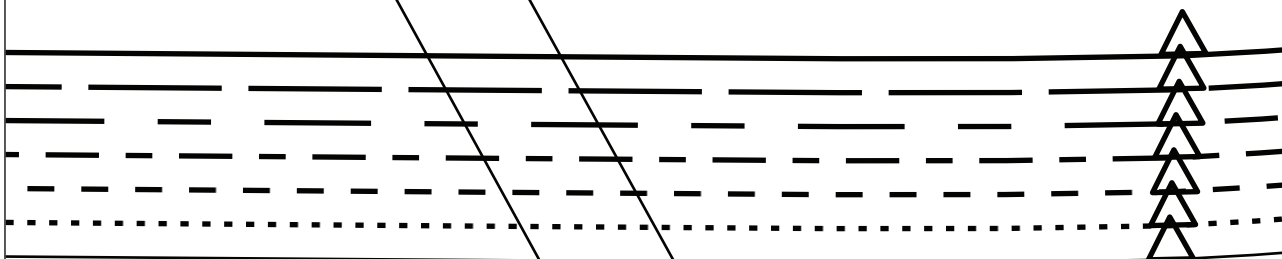
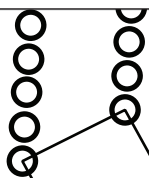


24B

1-CM (3/8-IN) SEAM ALLOWANCE INCLUDED

LEATHER JACKET

SIDE FRONT - CUT 2 IN LEATHER OR FABRIC



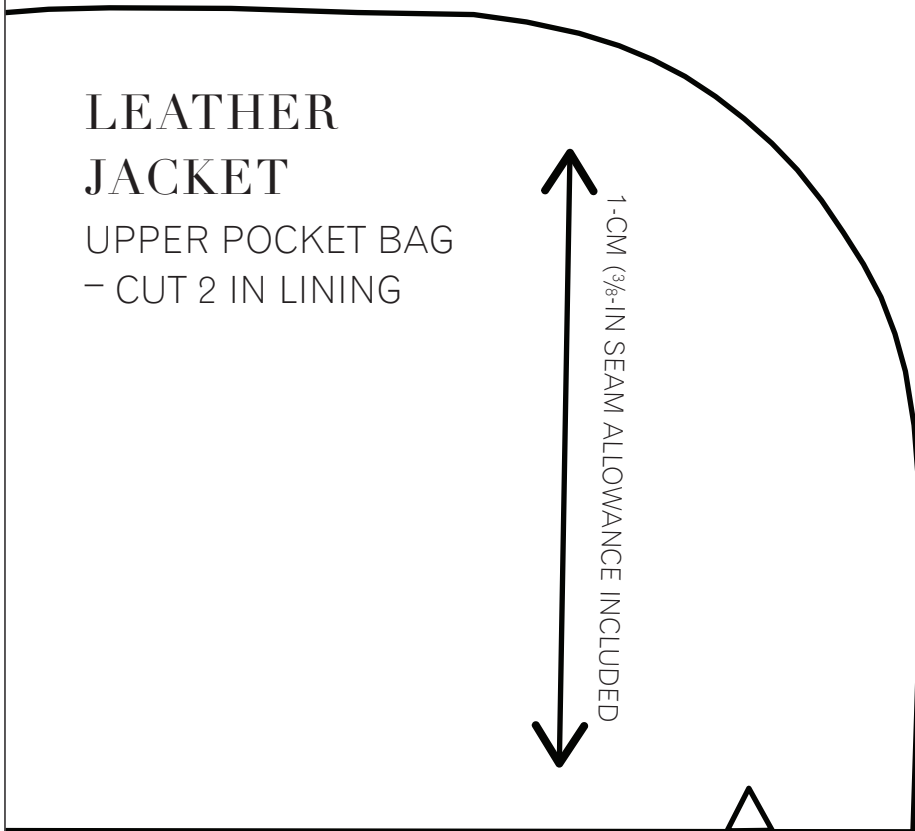
30A

31A

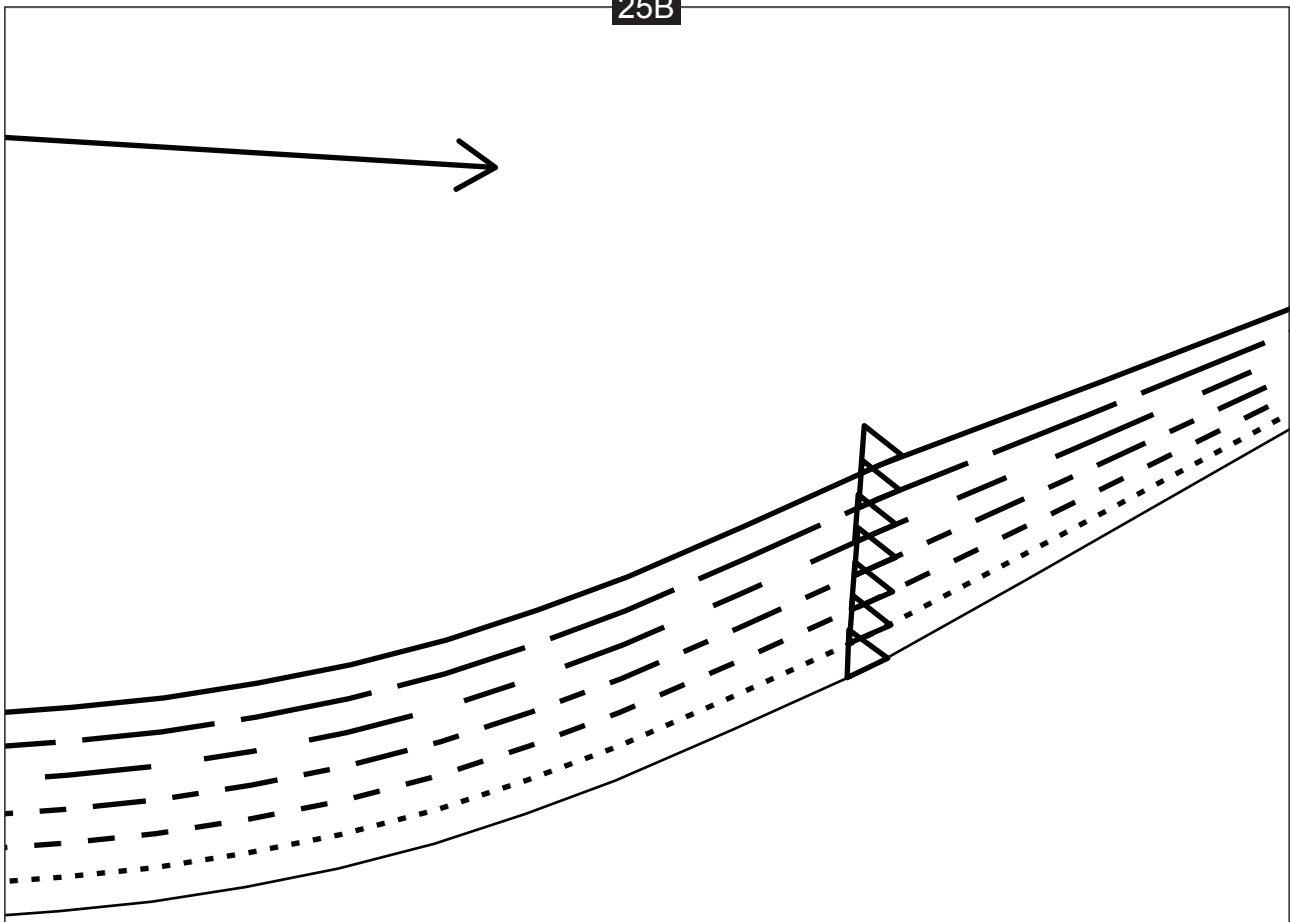
LEATHER JACKET

UPPER POCKET BAG
- CUT 2 IN LINING

1-CM (3/8-IN) SEAM ALLOWANCE INCLUDED

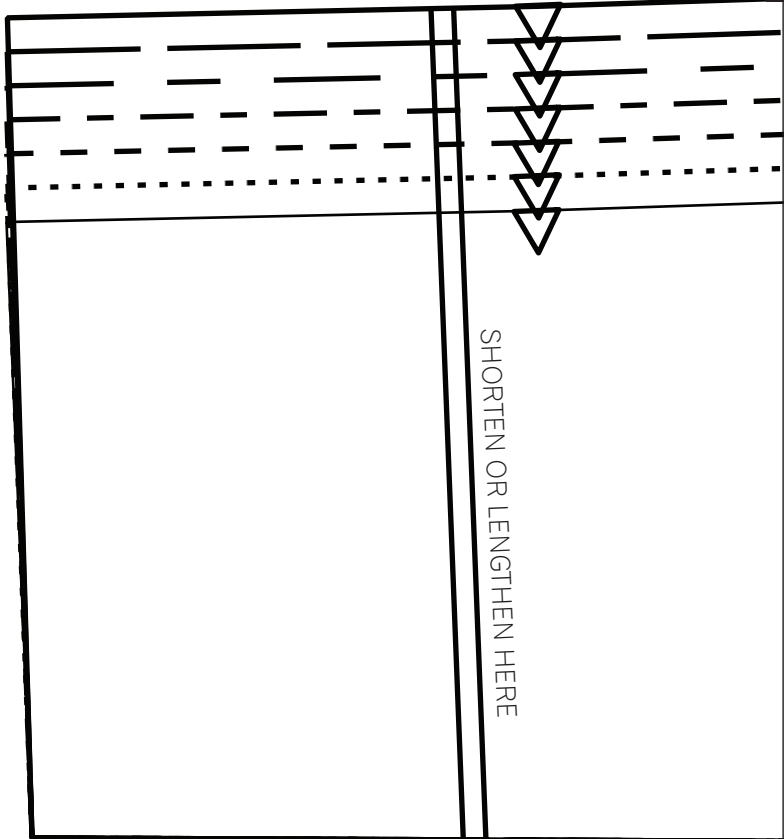


25B

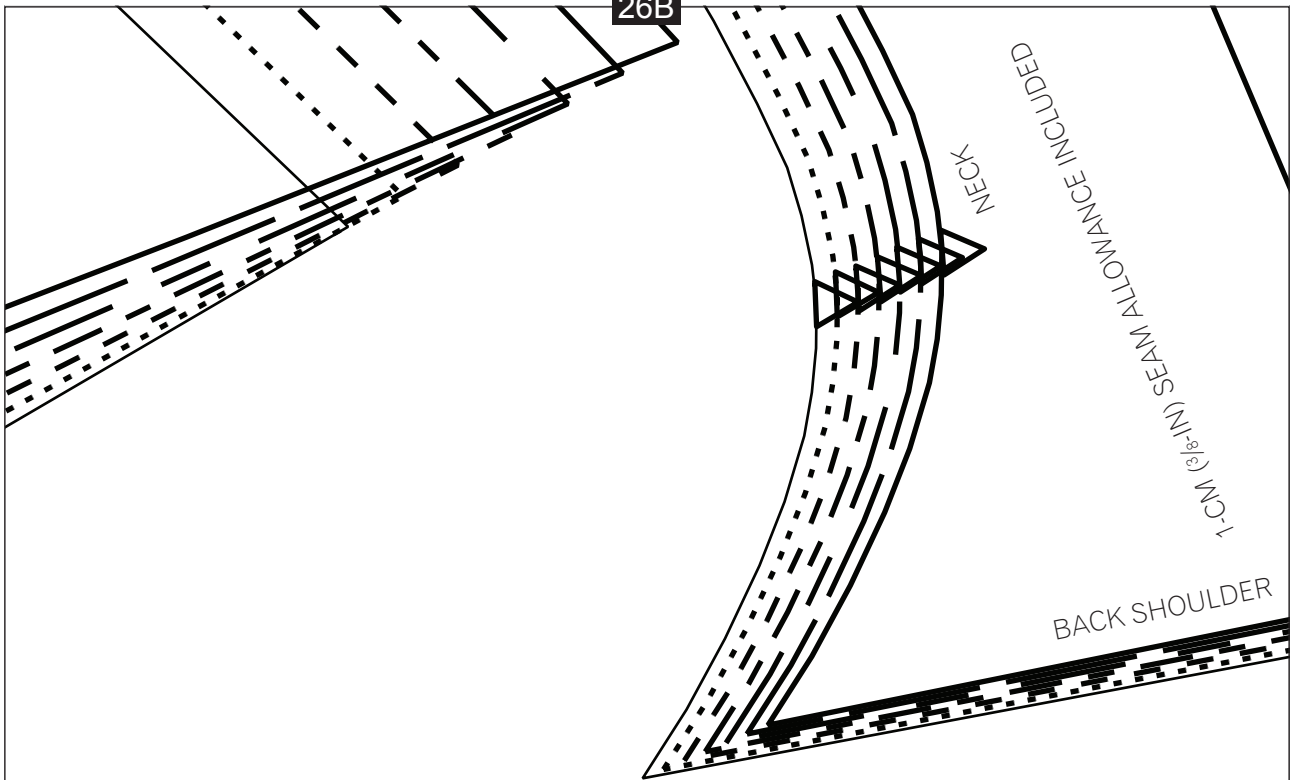


31A

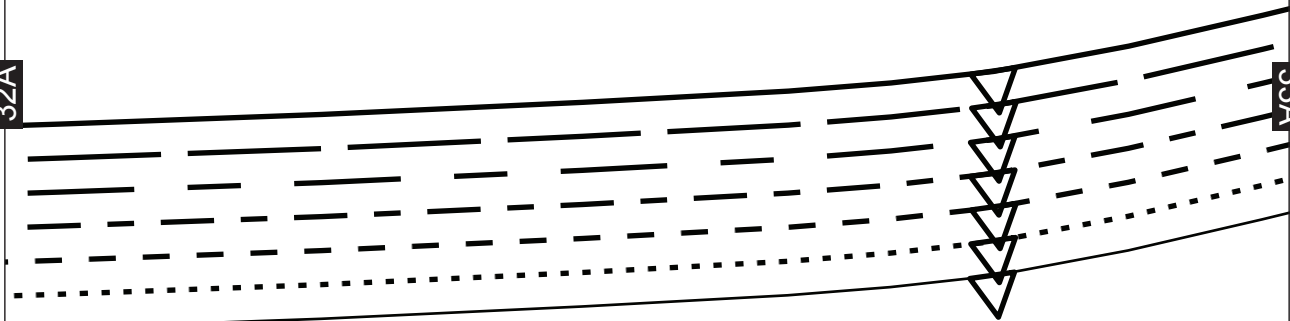
32A



SHORTEN OR LENGTHEN HERE



32A

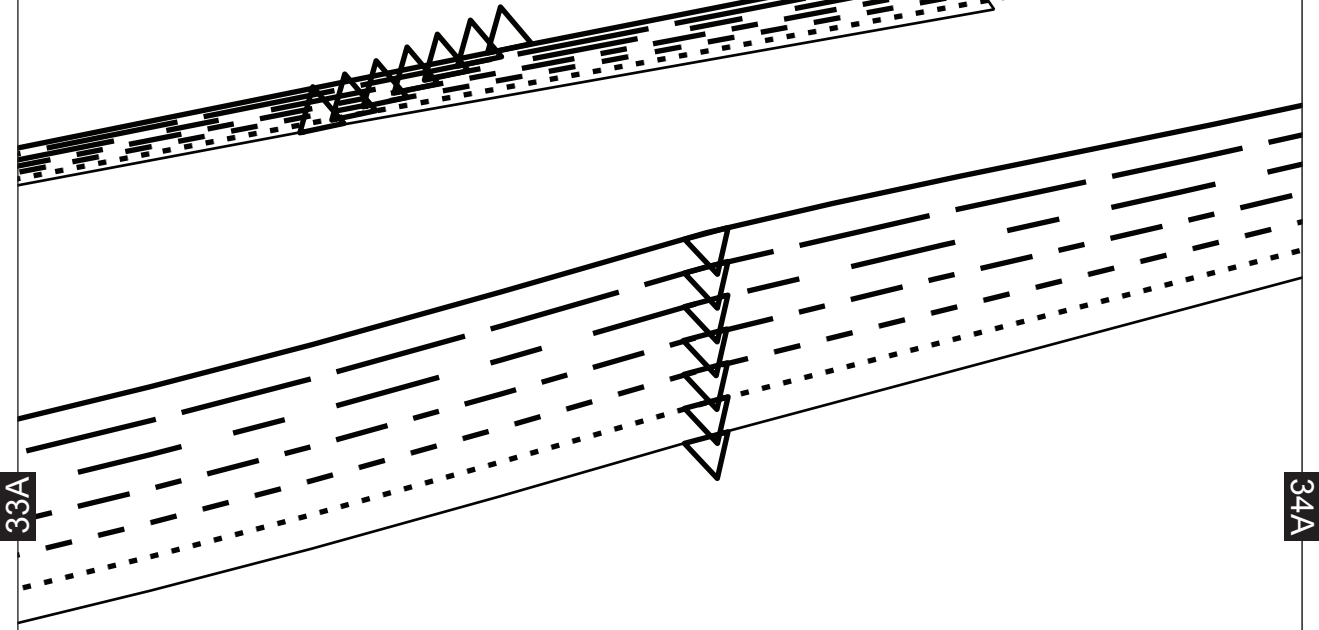
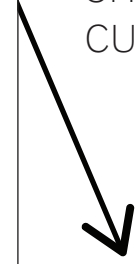


1-CM (3/8-IN SEAM ALLOWANCE INCLUDED

LEATHER JACKET

SHOULDER YOKE –
CUT 2 IN LEATHER OR FABRIC

27B



33A

34A

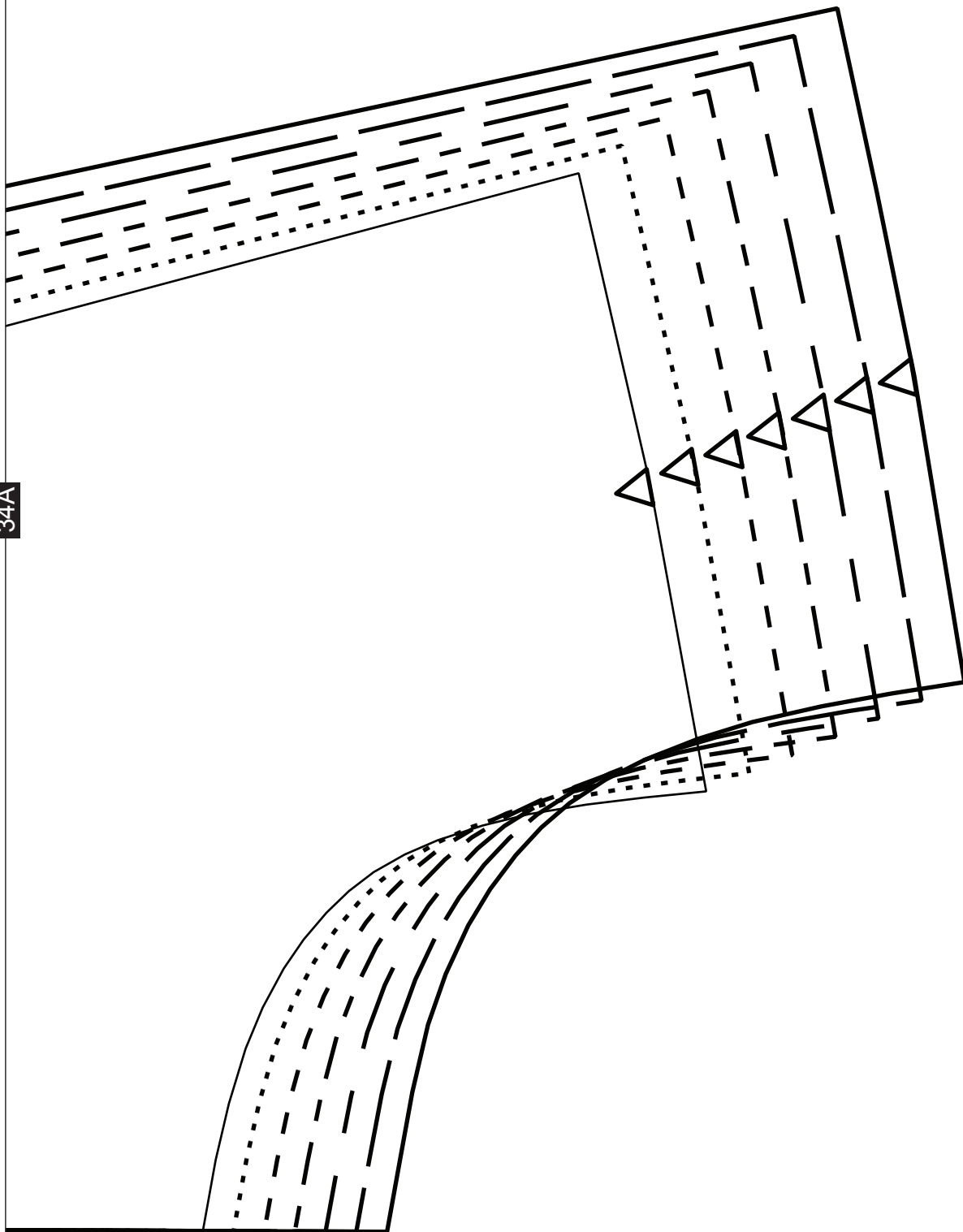
LEATHER JACKET

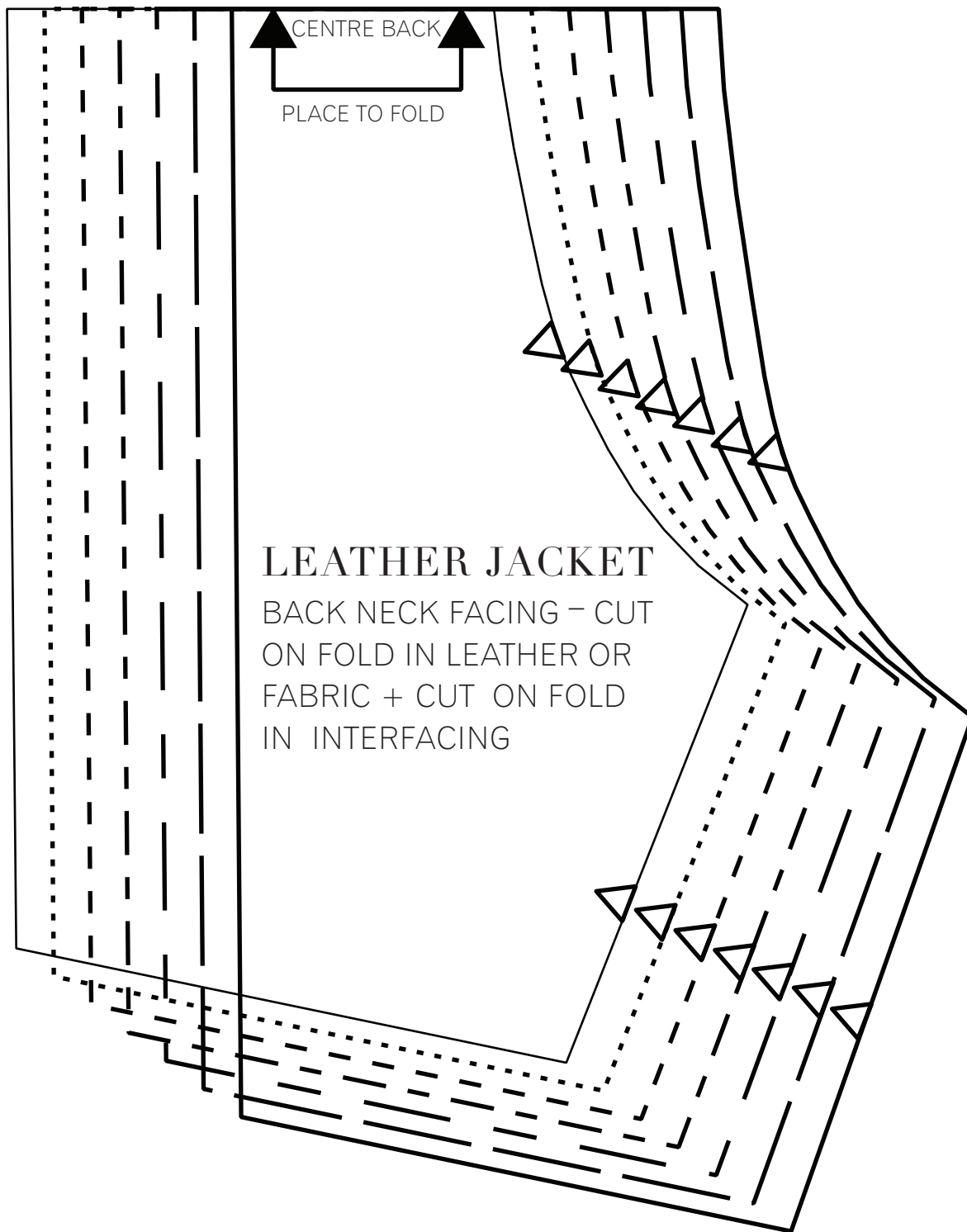
FRONT FACING – CUT 2 IN LEATHER OR FABRIC
+ CUT 2 IN INTERFACING



28B

34A





LEATHER JACKET

BACK NECK FACING - CUT
ON FOLD IN LEATHER OR
FABRIC + CUT ON FOLD
IN INTERFACING



LEATHER JACKET

UNDER POCKET BAG -

CUT 2 IN LINING