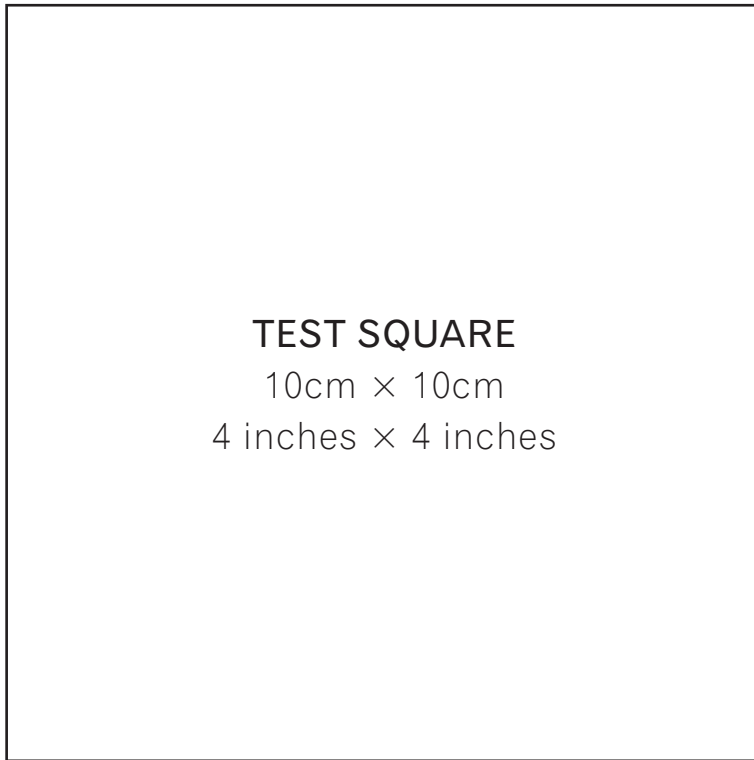
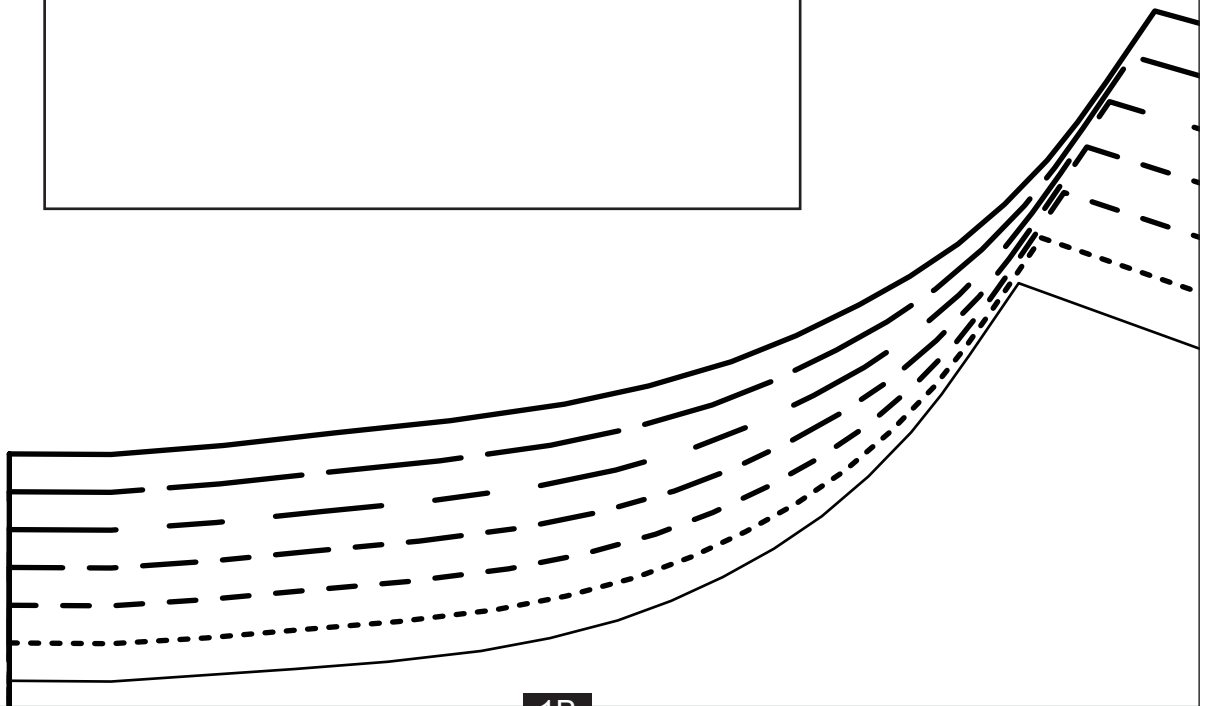


**Jersey Dress**

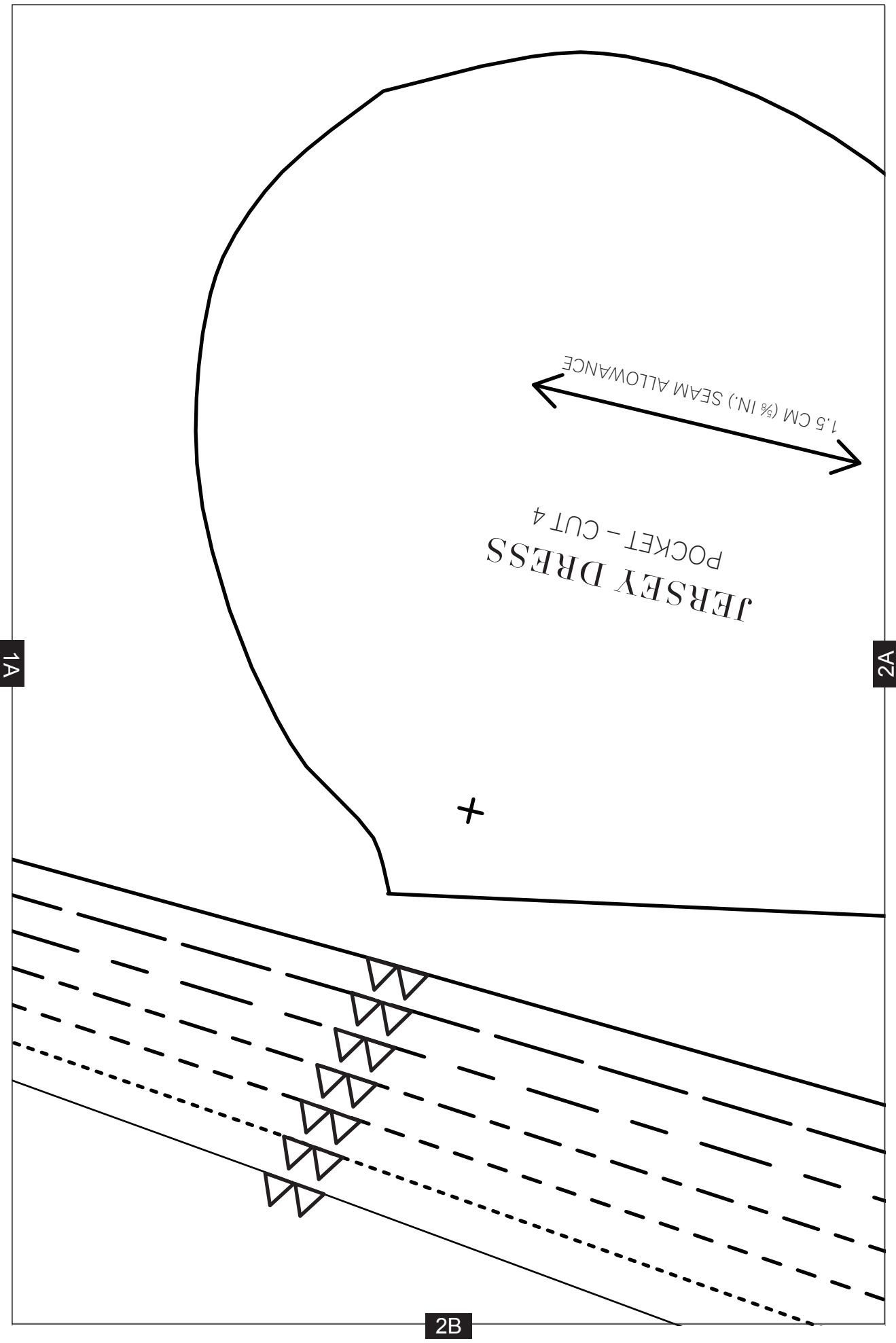
Project design © Love Productions 2016  
This design is protected by copyright and  
must not be made for resale.



1A



1B



1A

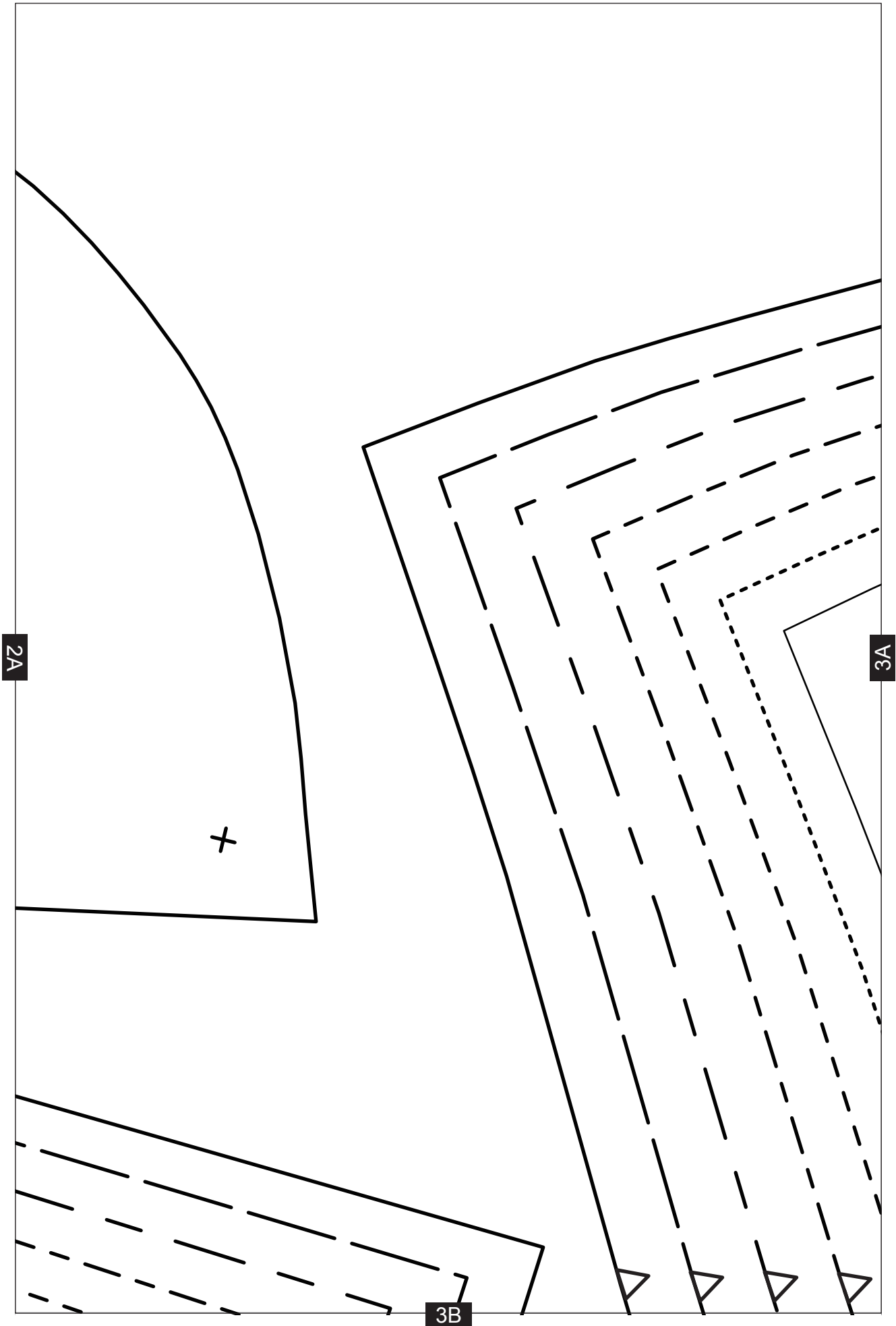
2A

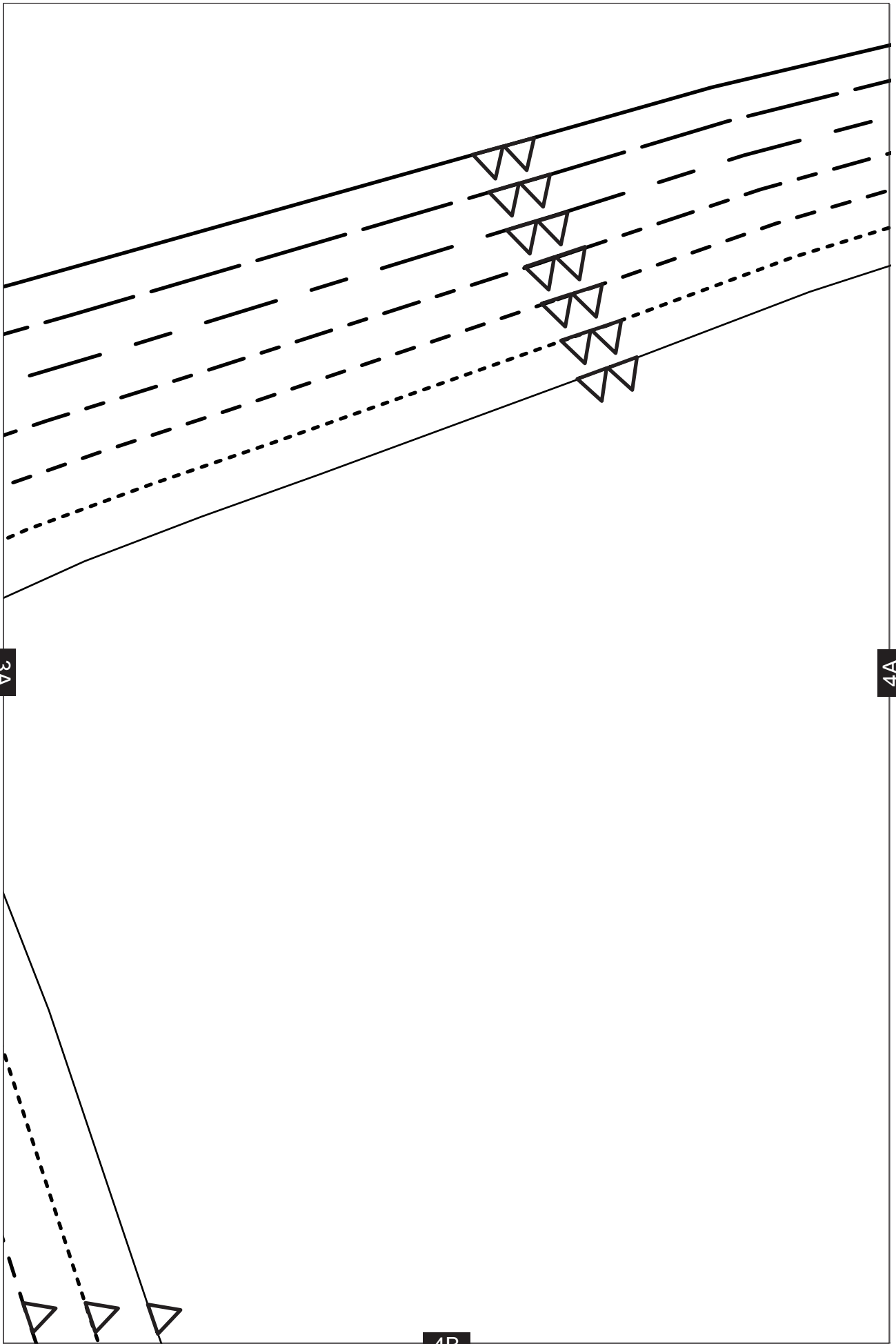
2B

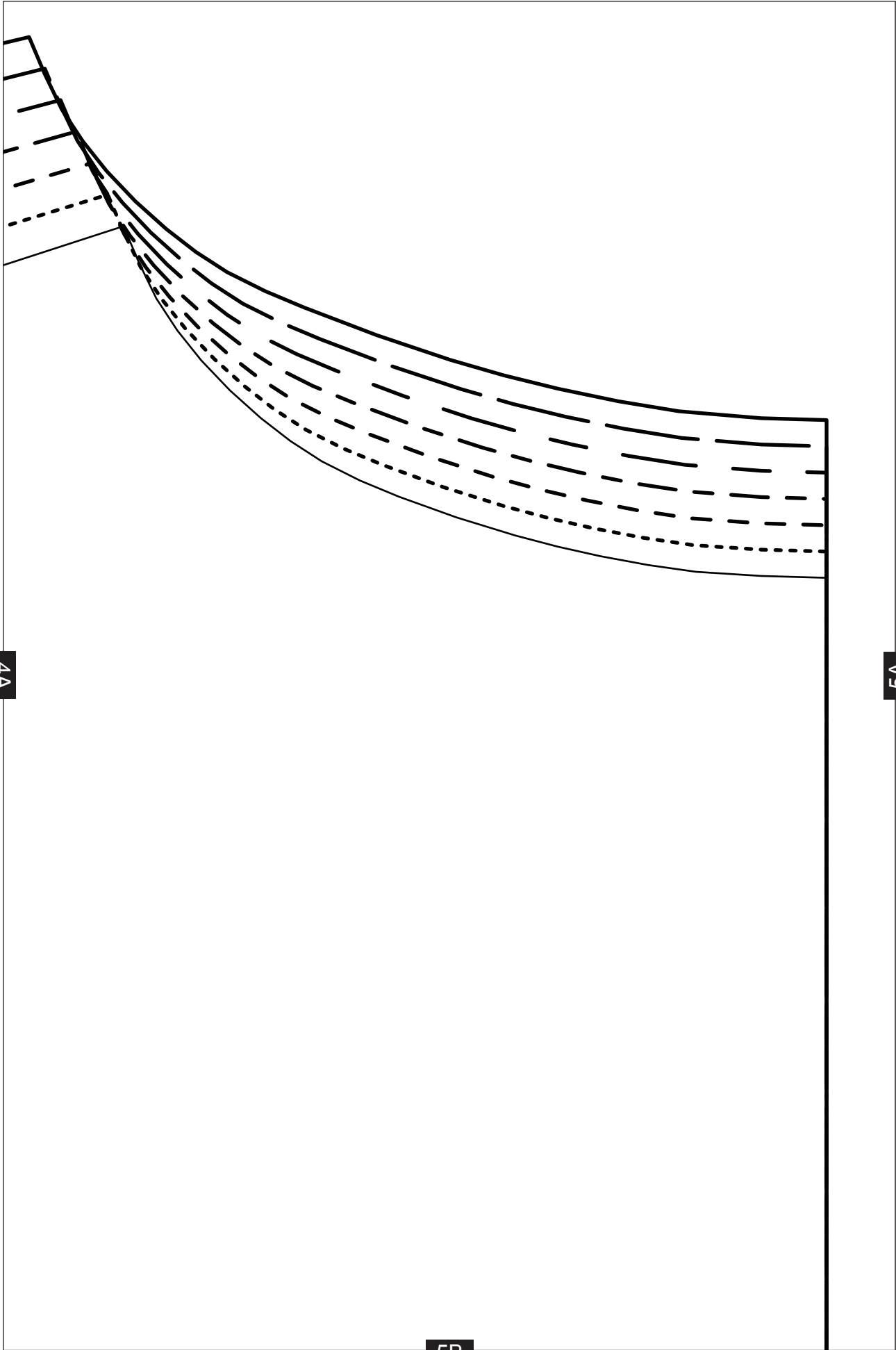
JERSEY DRESS  
POCKET - CUT 4

1.5 CM (5/8 IN.) SEAM ALLOWANCE

+

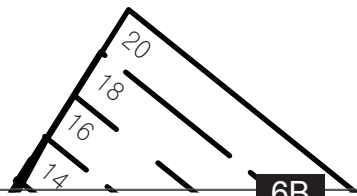




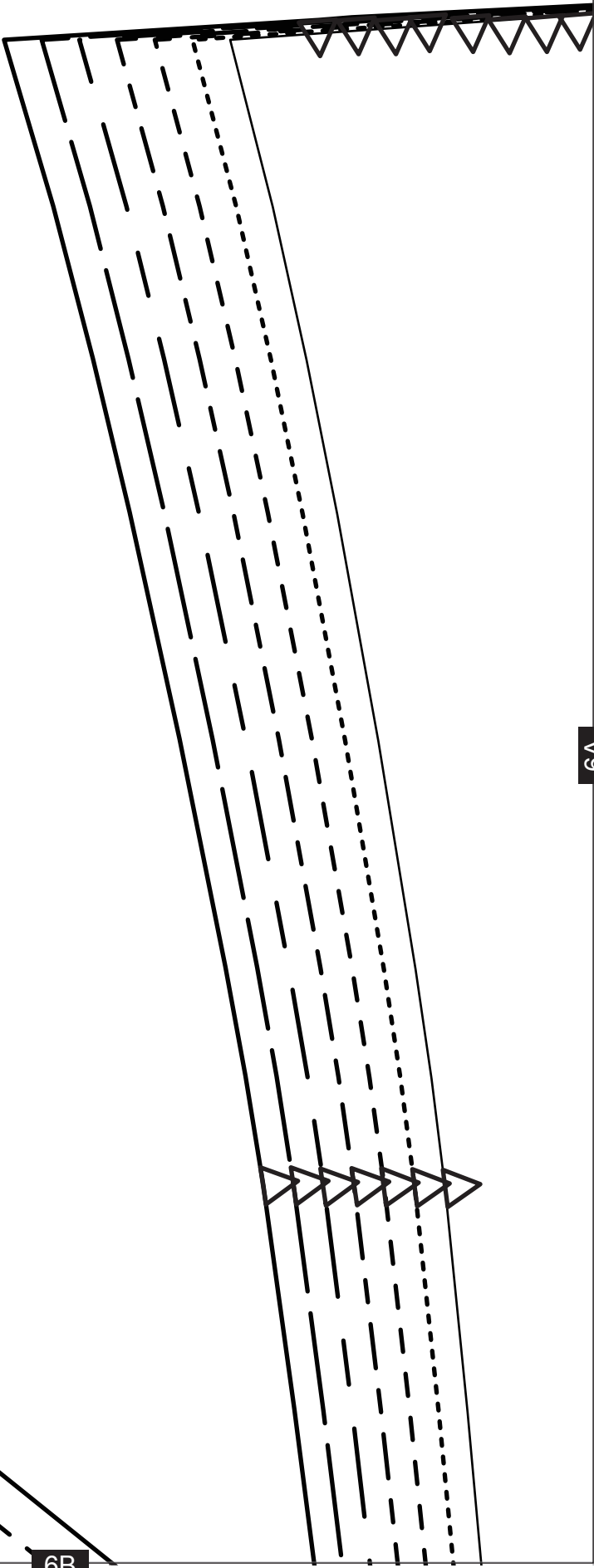


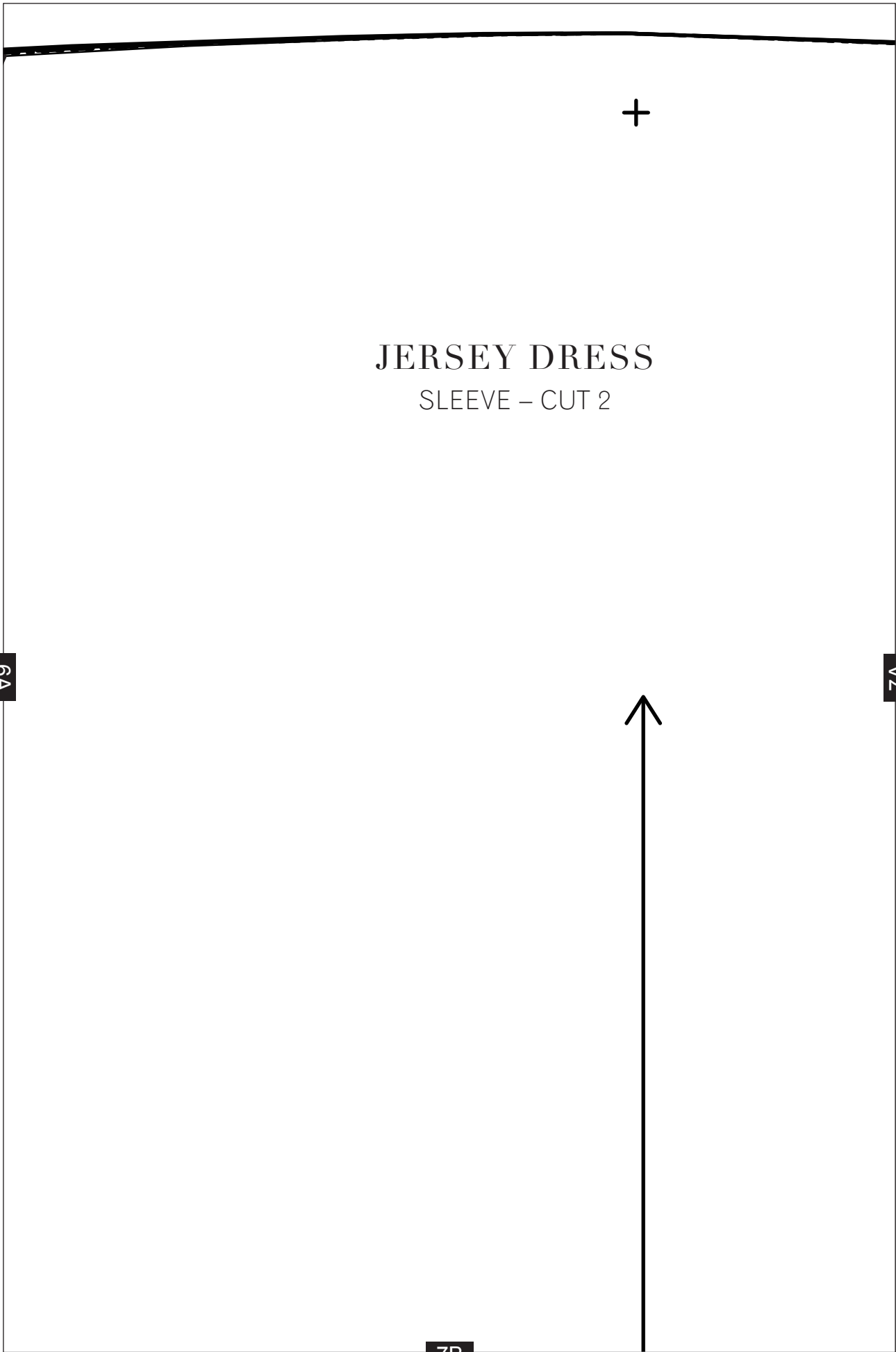
5A

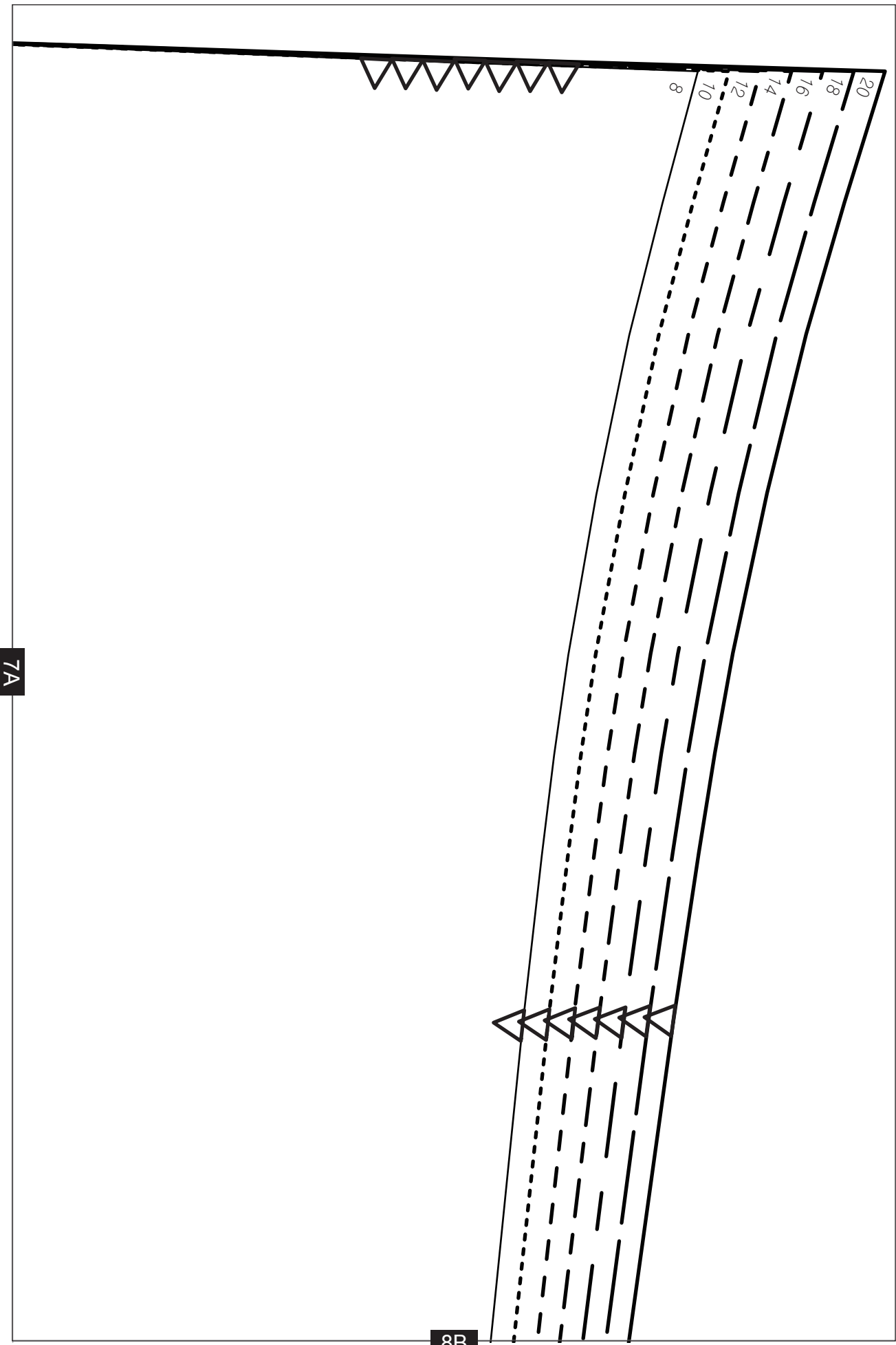
6A



6B







7A

8B



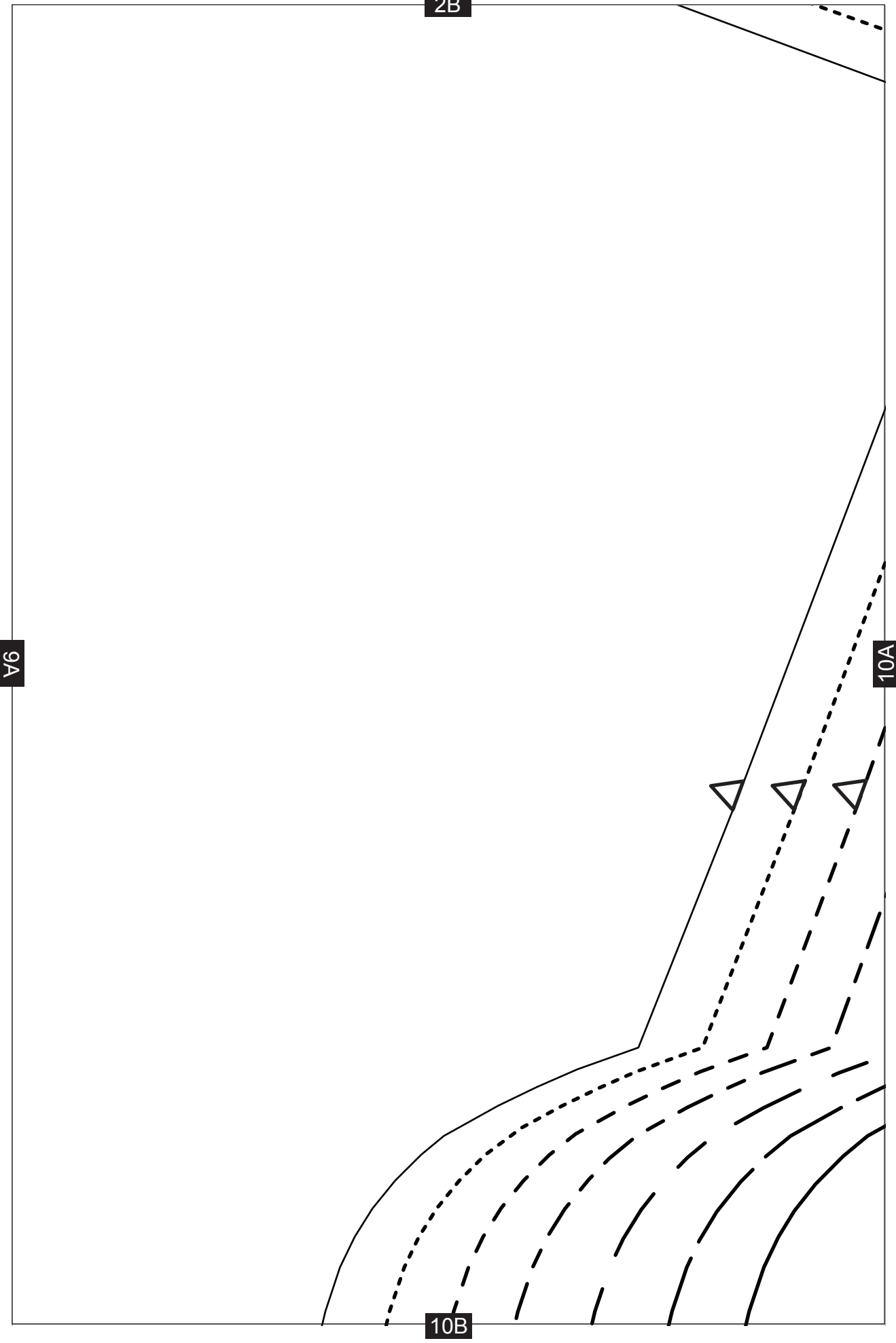
1B

9A

9B

CUT ON FOLD



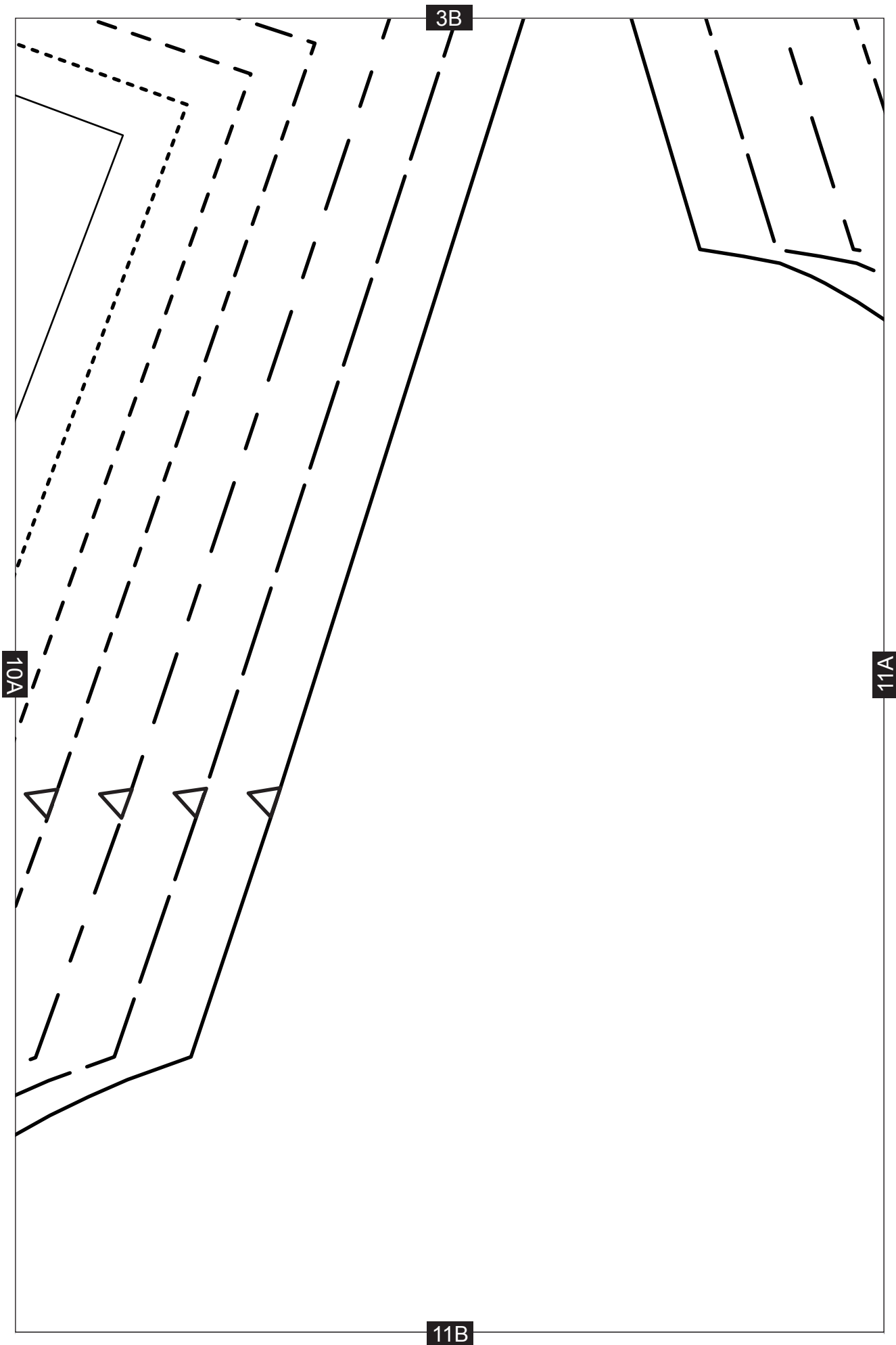


2B

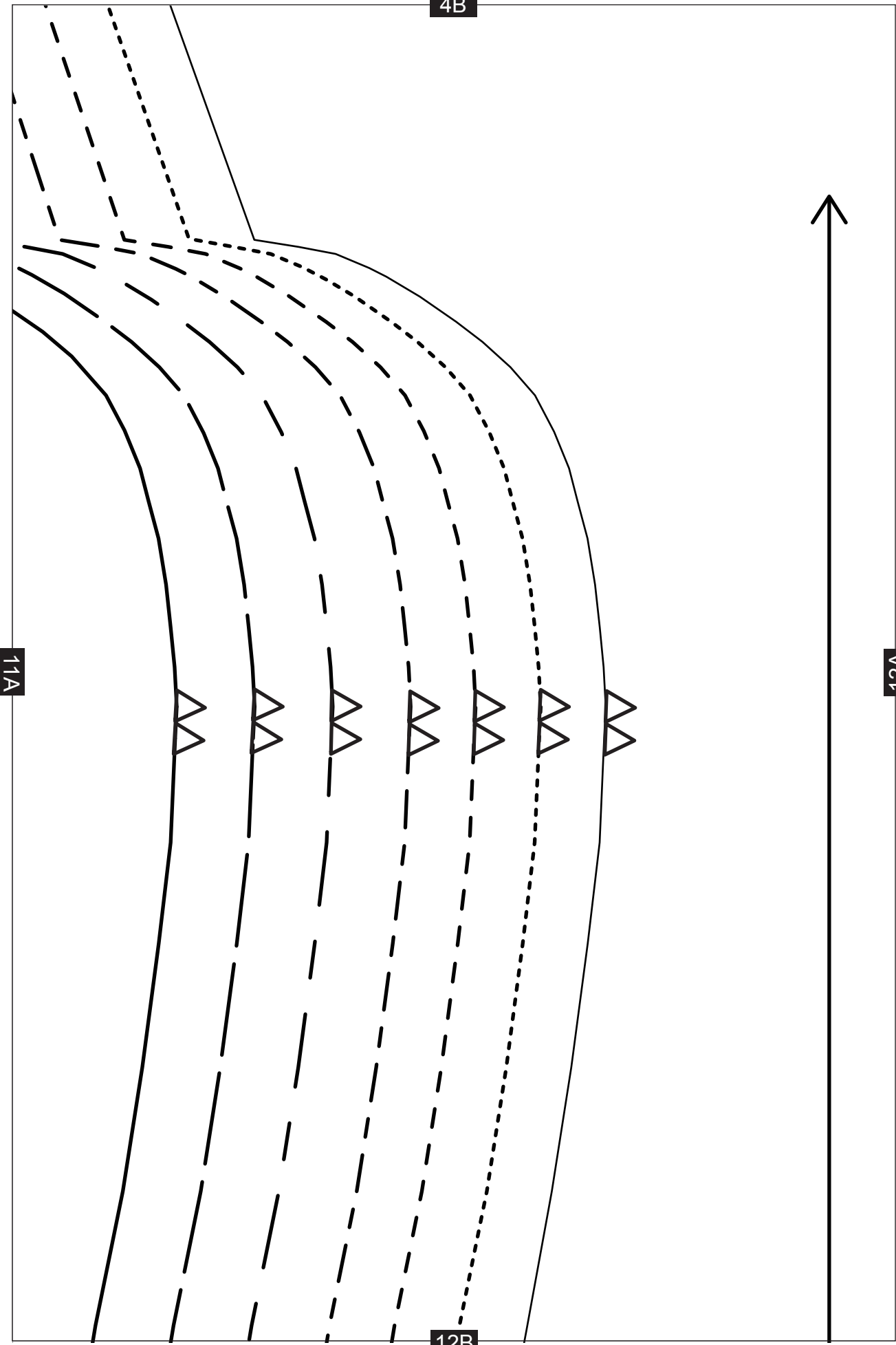
9A

10A

10B



4B



11A

12A

12B

12A

**JERSEY DRESS**  
FRONT – CUT 1 ON FOLD

5B

CUT ON FOLD



13A

13B

6B

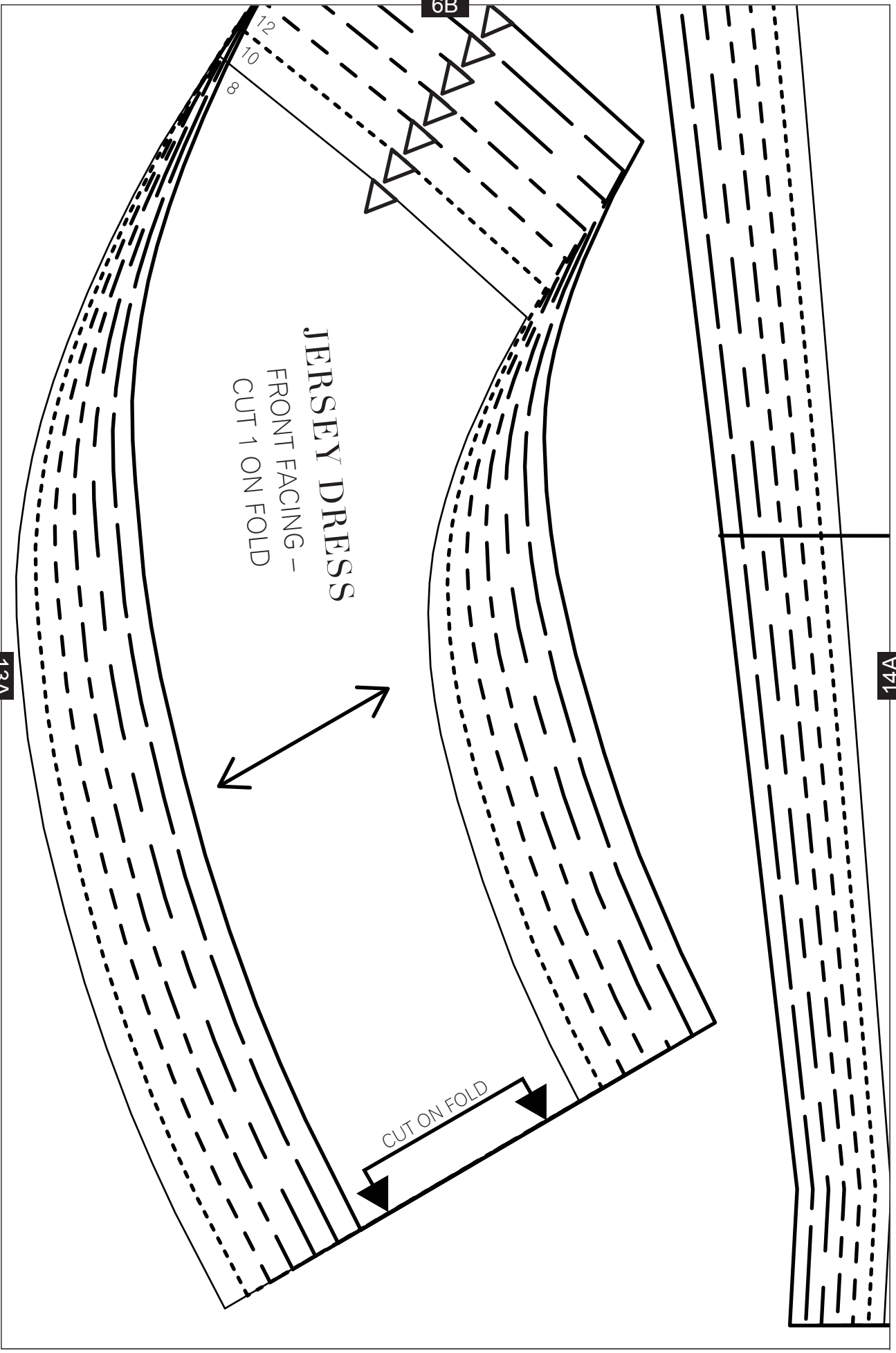
JERSEY DRESS  
FRONT FACING -  
CUT 1 ON FOLD

CUT ON FOLD

13A

14A

12  
10  
8



7B

¾ SLEEVE

14A

15A

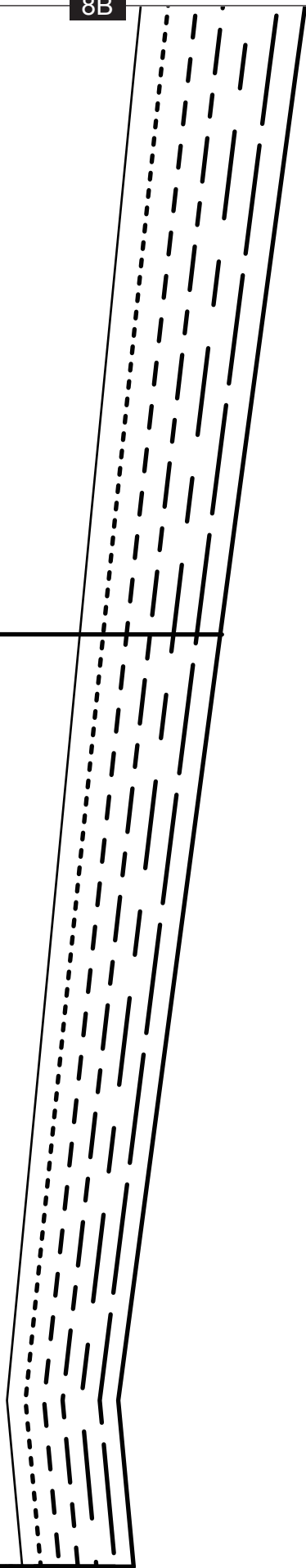


FULL-LENGTH SLEEVE

2.5 CM (1 IN.) HEM

8B

15A





9B

**JERSEY DRESS**  
BACK - CUT 1 ON FOLD



17A

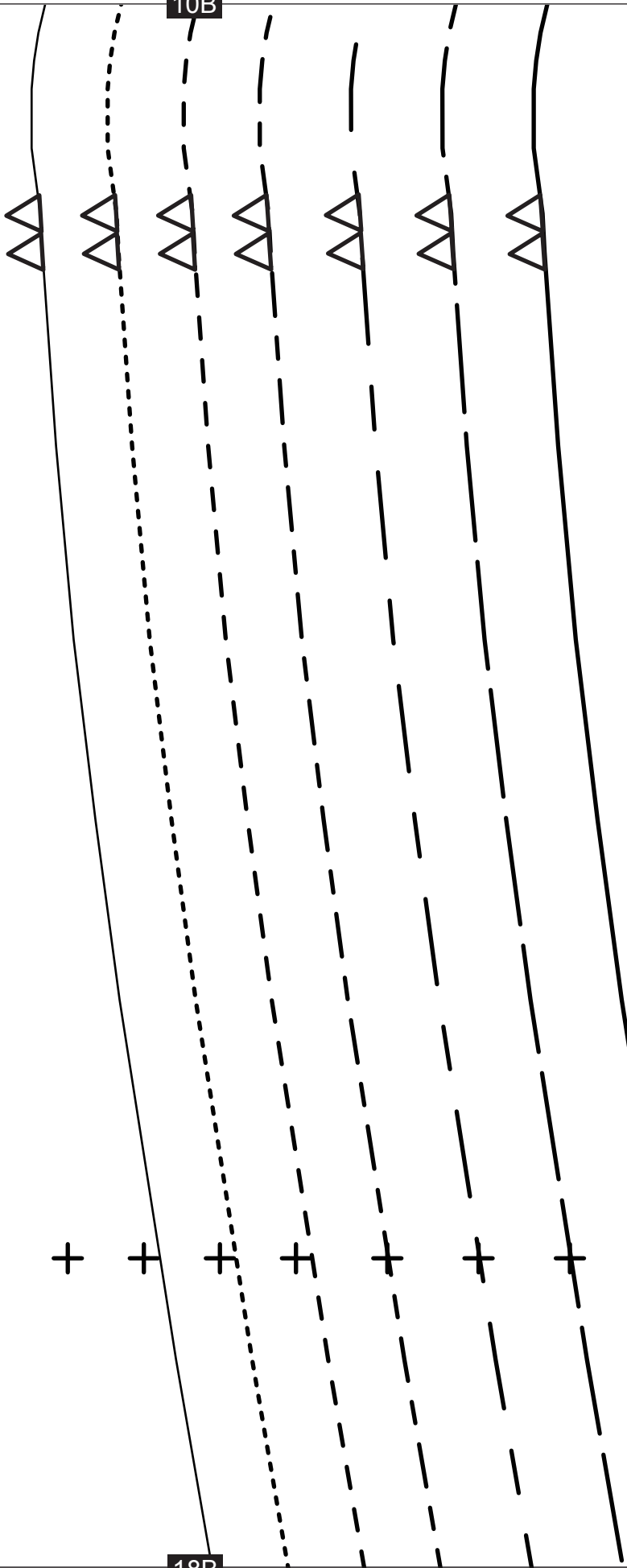
17B

17A

10B

18A

18B

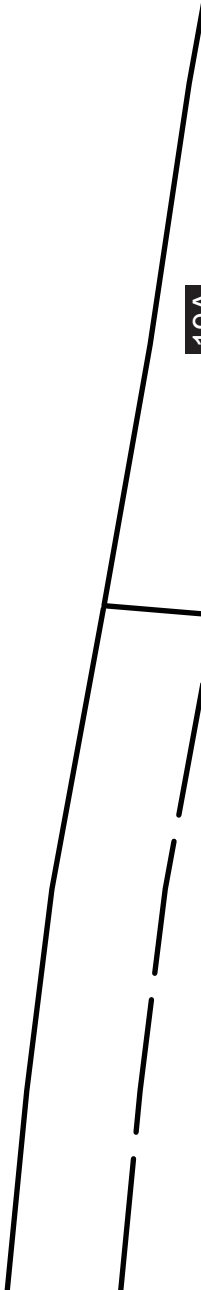


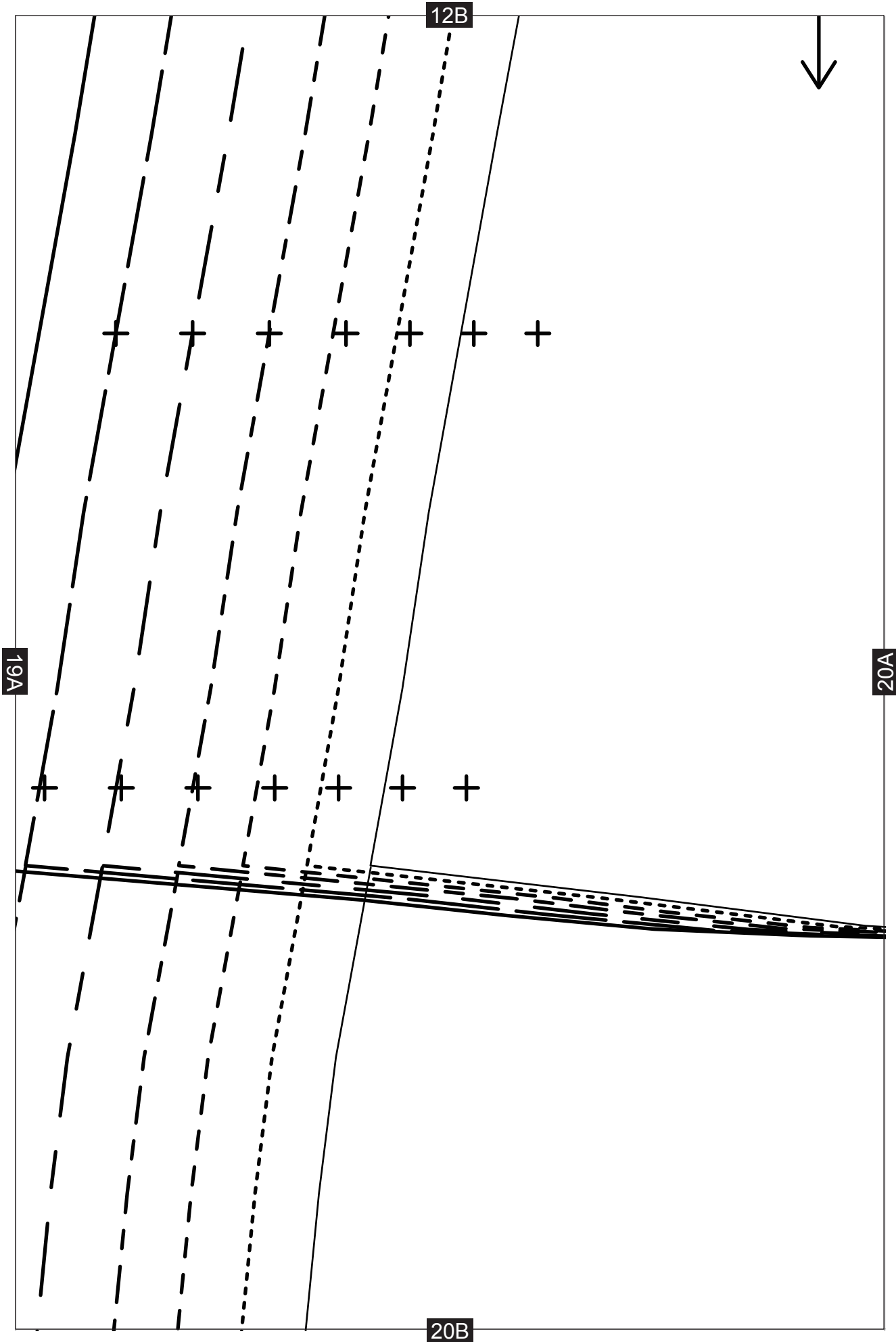
11B

18A

19A

19B





13B

20A

CUT HERE FOR TOP AND TEE

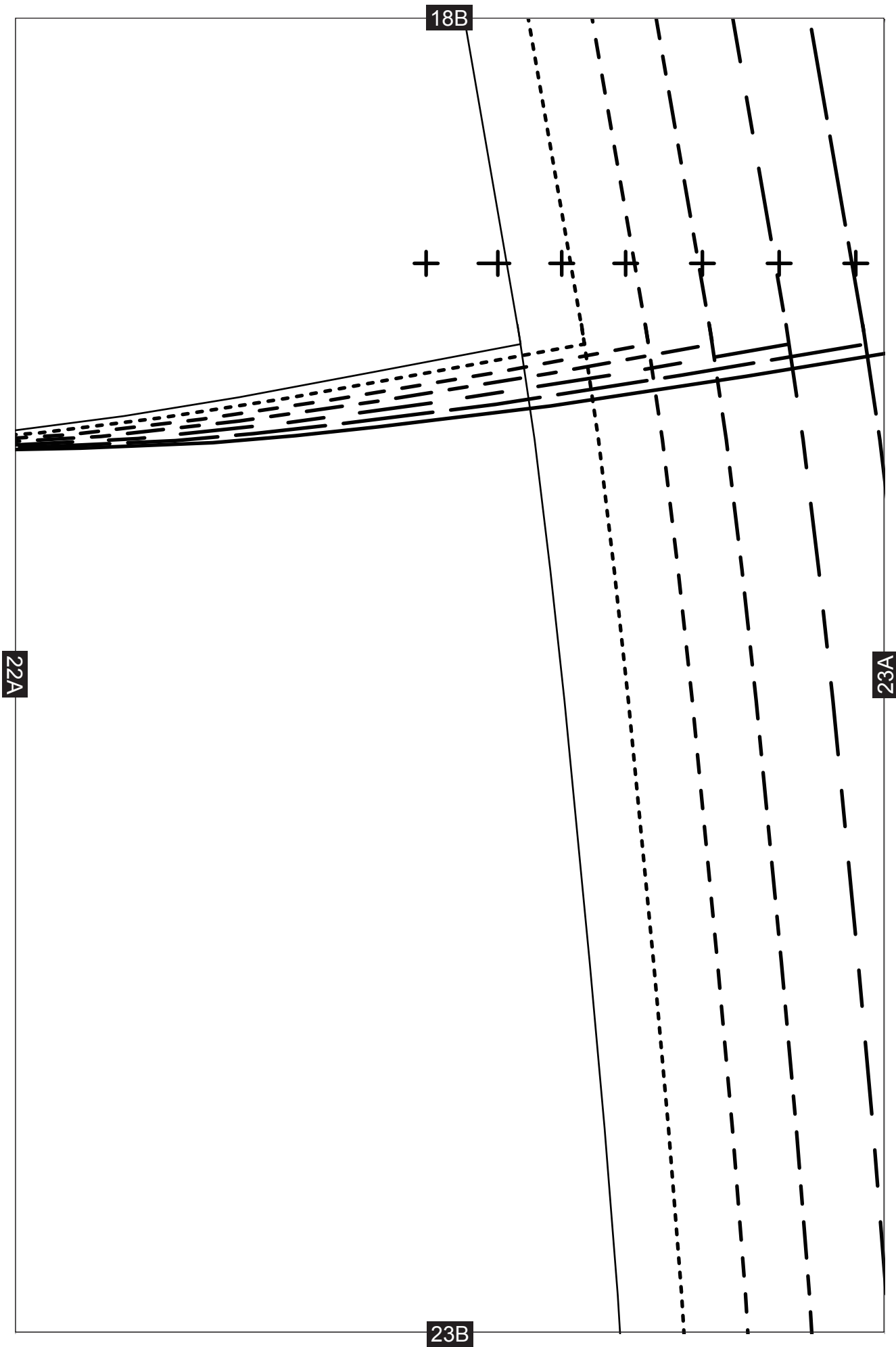
21B

17B

CUT HERE FOR TOP AND TEE

22A

22B

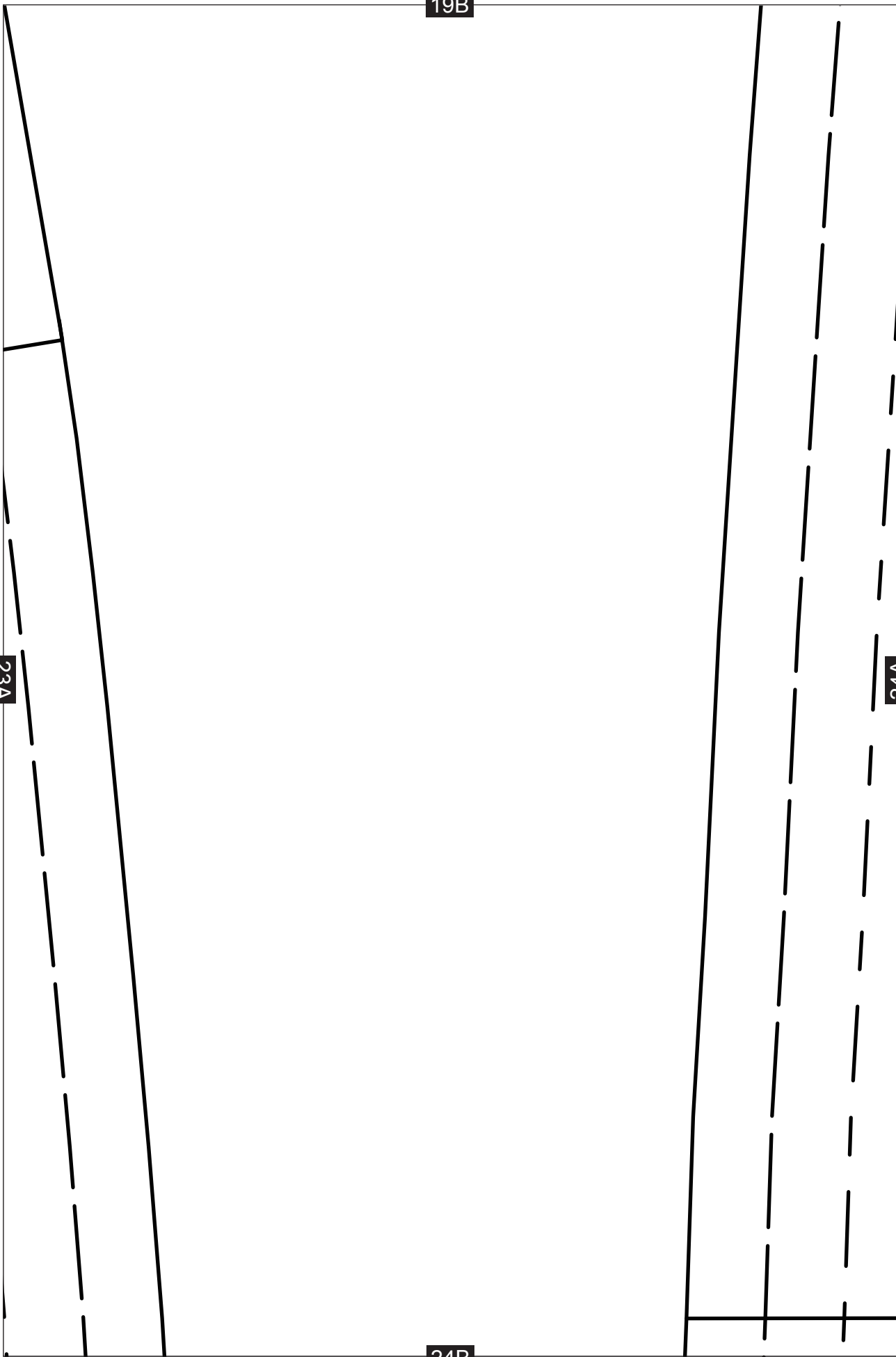


19B

23A

24A

24B



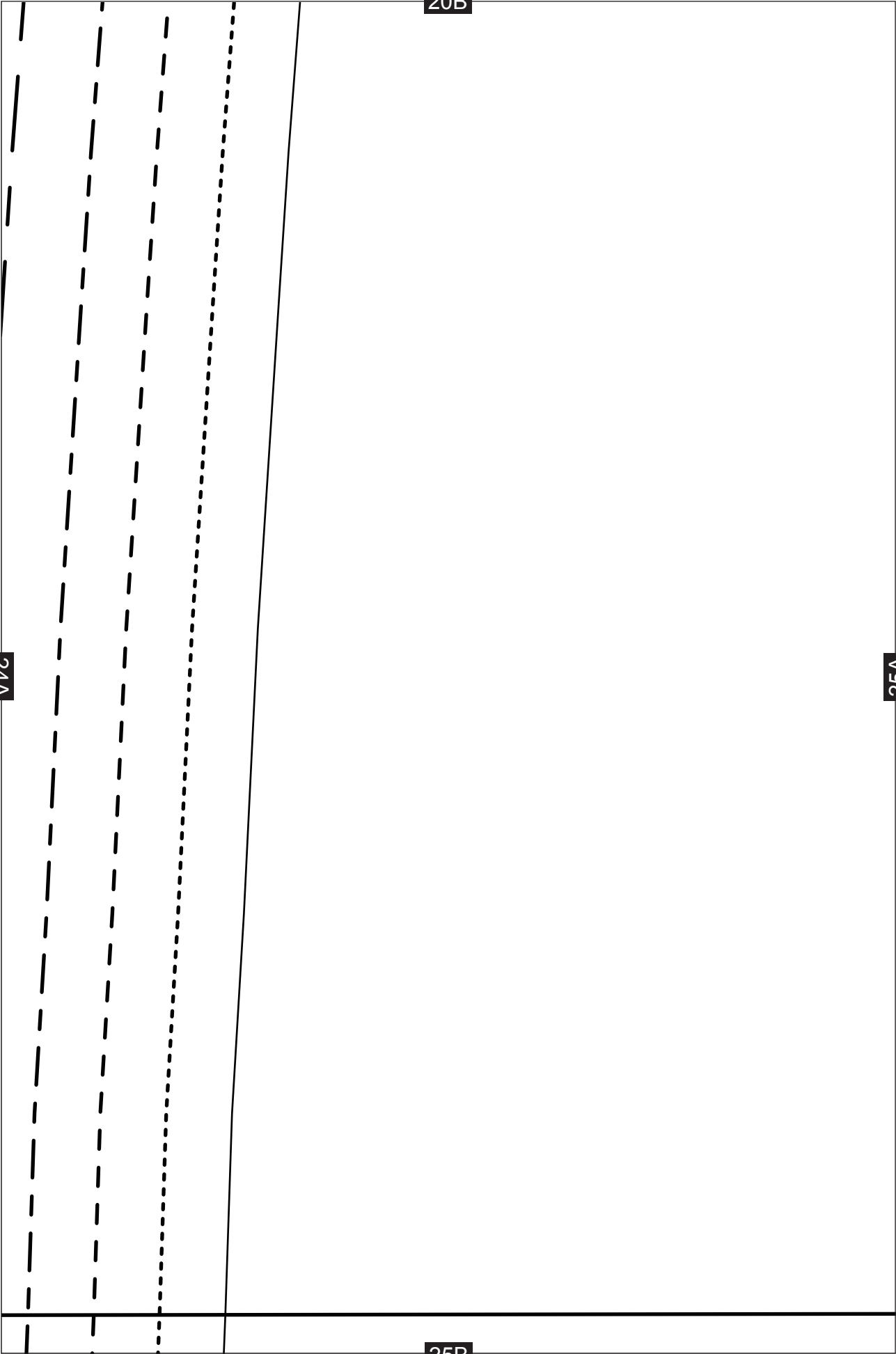


20B

24A

25A

25B



21B

25A

SHORTER DRESS LENGTH

26B

22B

27A

LONGER DRESS LENGTH

23B

27A

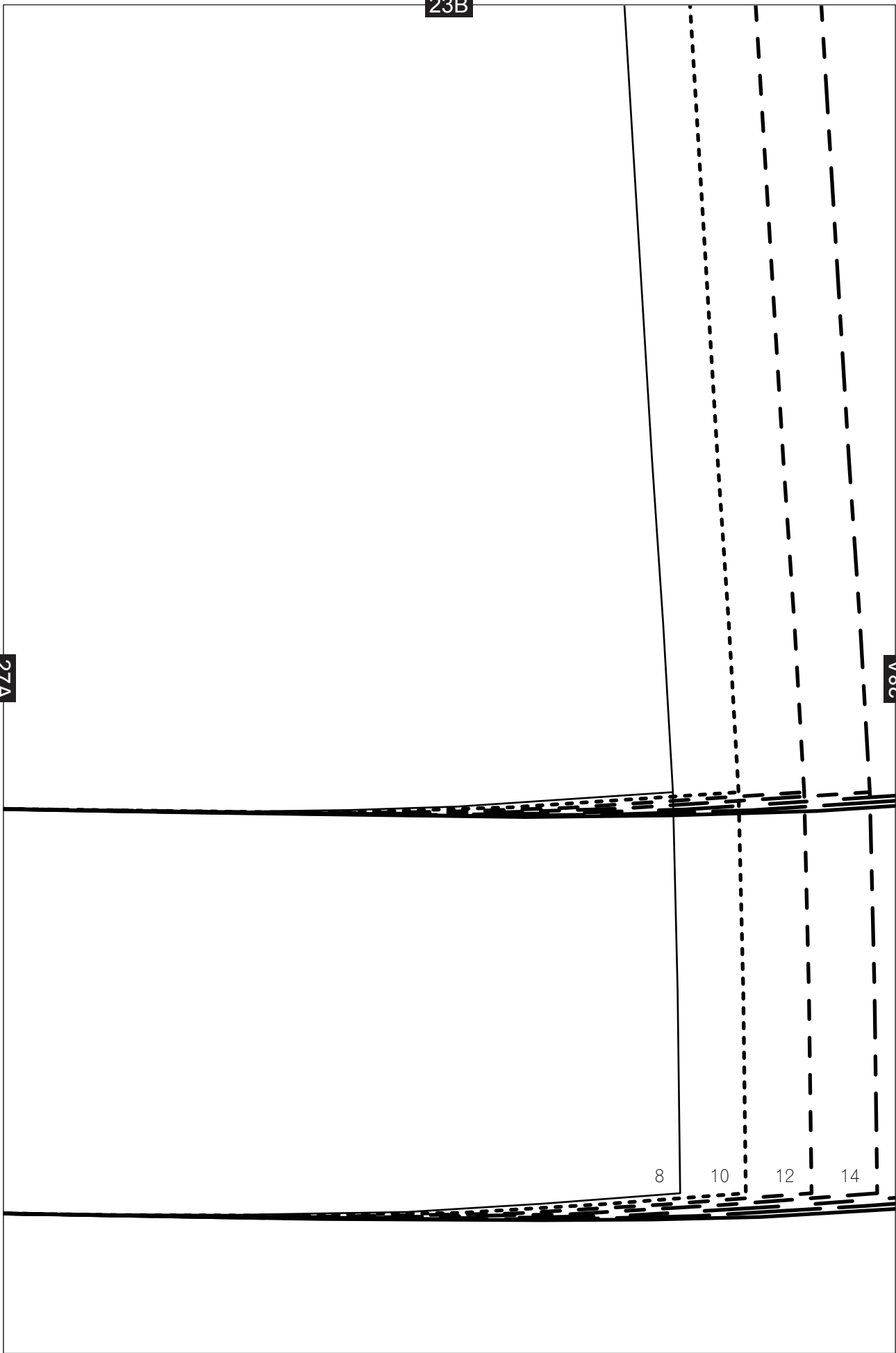
28A

8

10

12

14



24B

20

18

16

28A

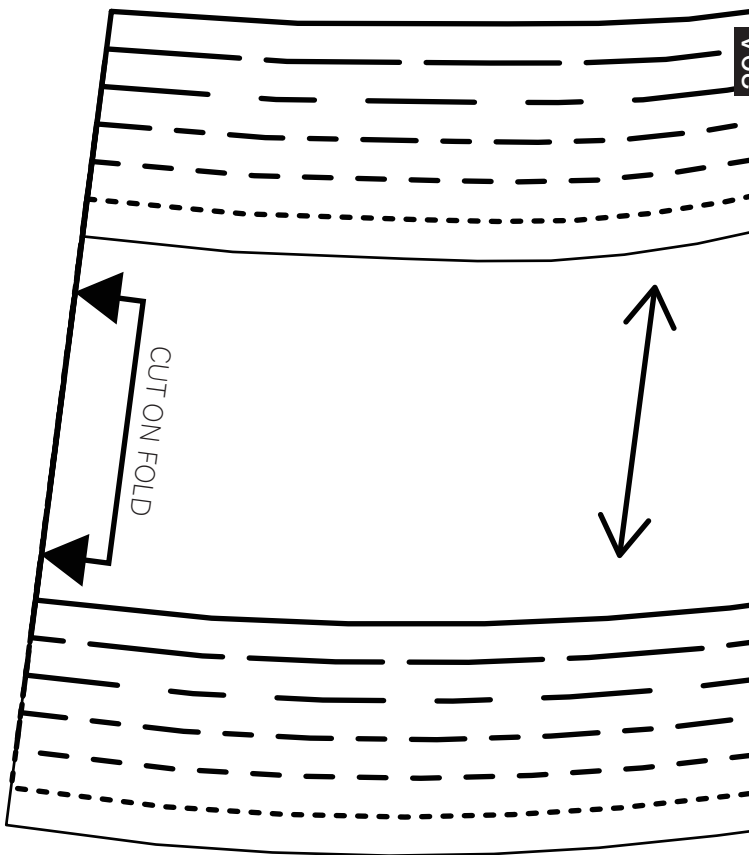
16

18

20

29A

CUT ON FOLD



25B

14

12

10

8

29A

30A

JERSEY DRESS  
BACK FACING -  
CUT 1 ON FOLD

20

18

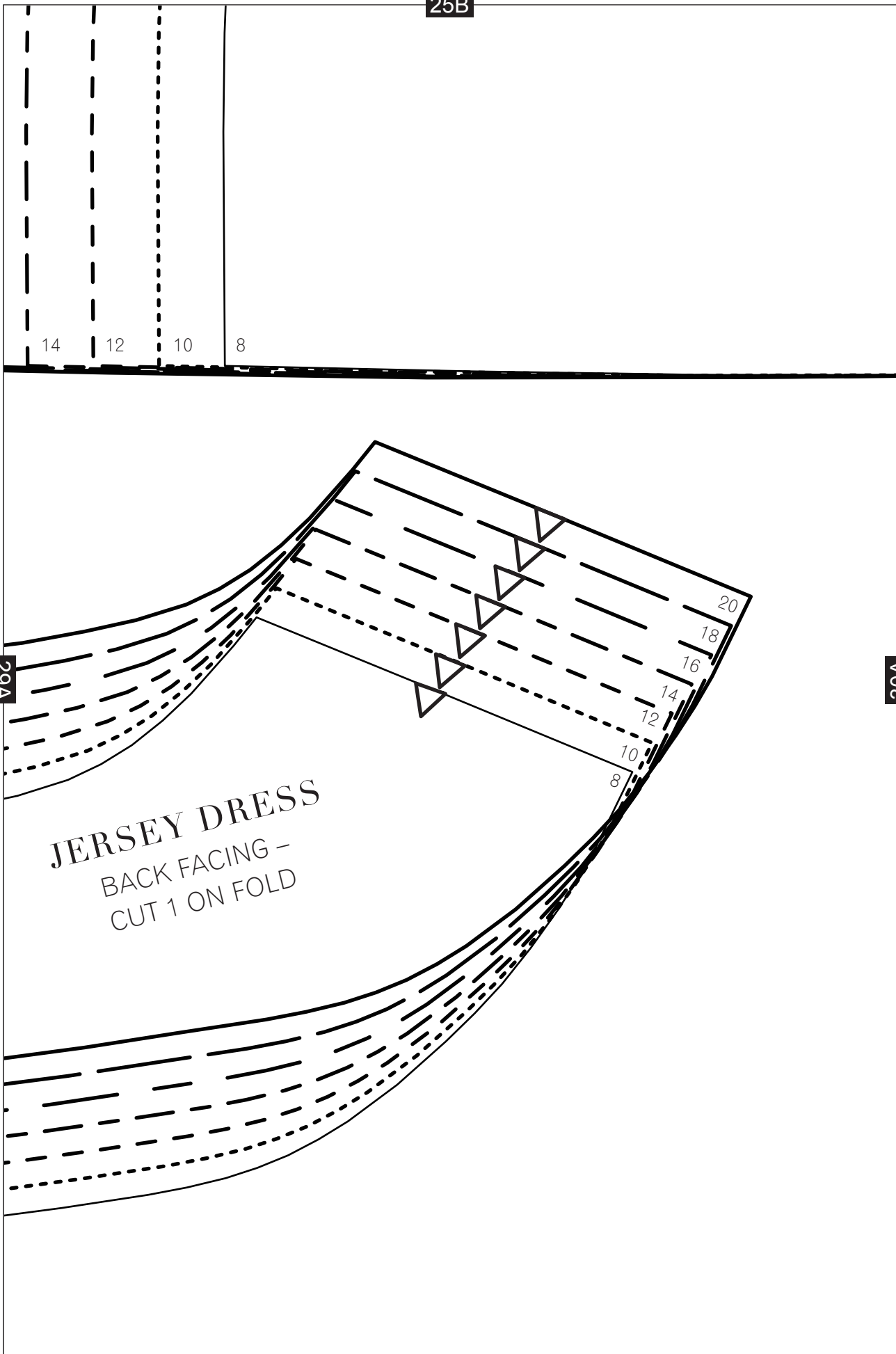
16

14

12

10

8



26B

LONGER DRESS LENGTH

30A