

TEST SQUARE: 10CM x 10CM / 4 INCHES x 4 INCHES



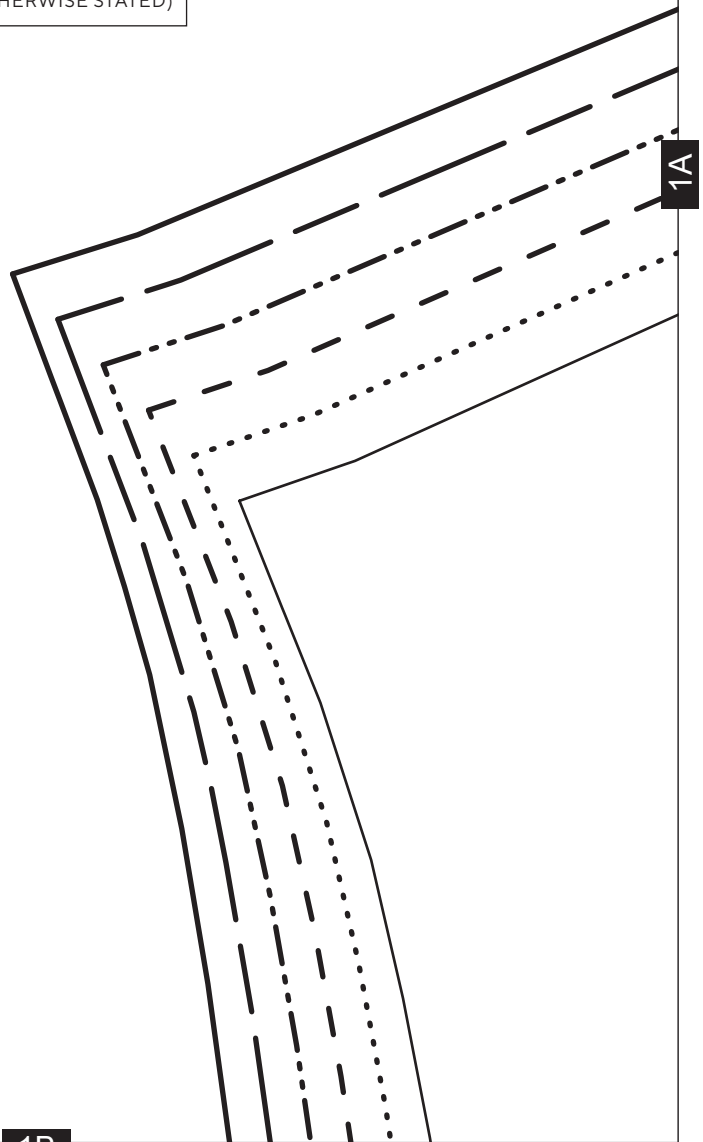
Bomber Jacket

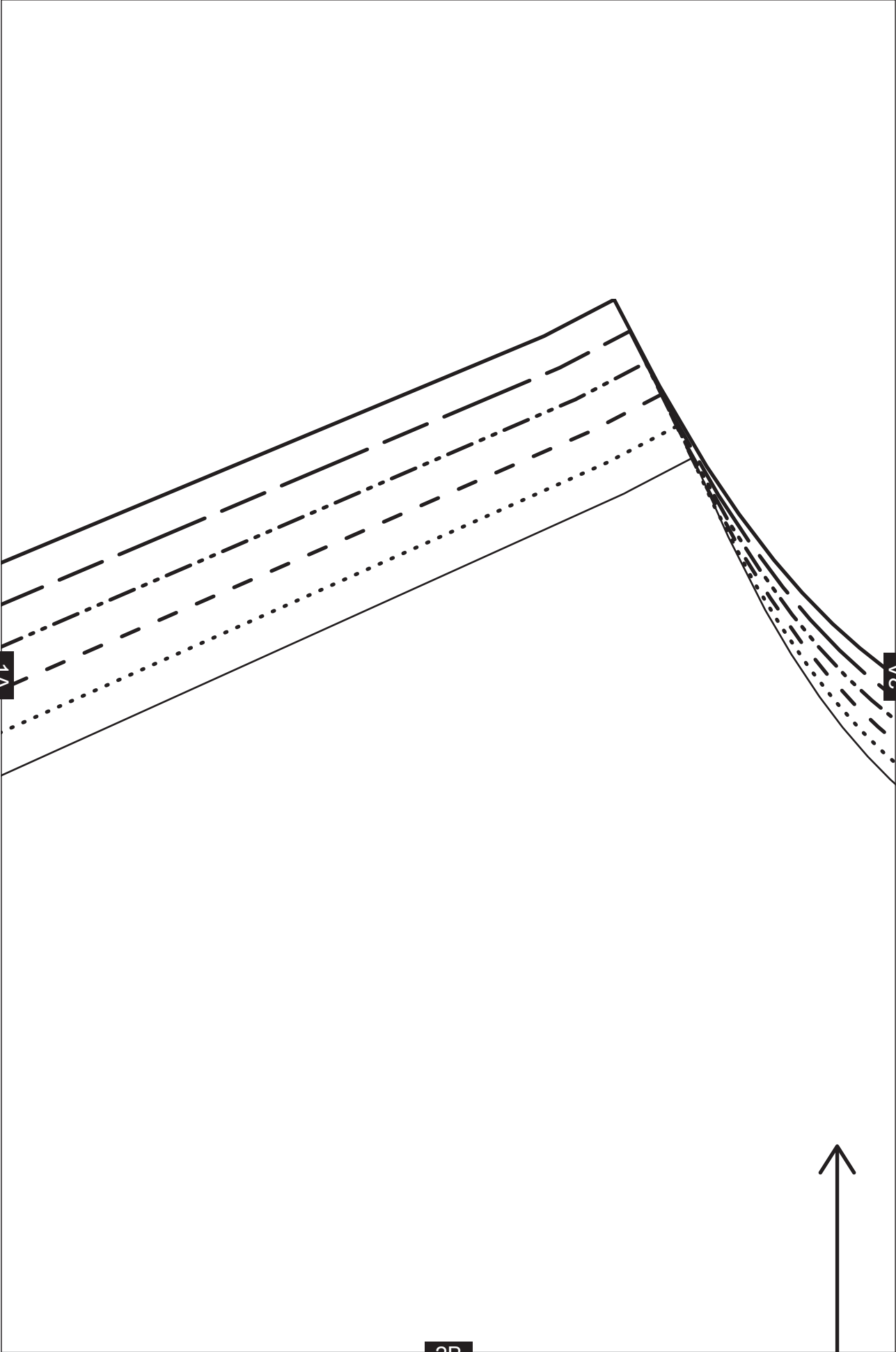
PROJECT DESIGN © LOVE PRODUCTIONS 2020
THIS DESIGN IS PROTECTED BY COPYRIGHT
AND MUST NOT BE MADE FOR RESALE.

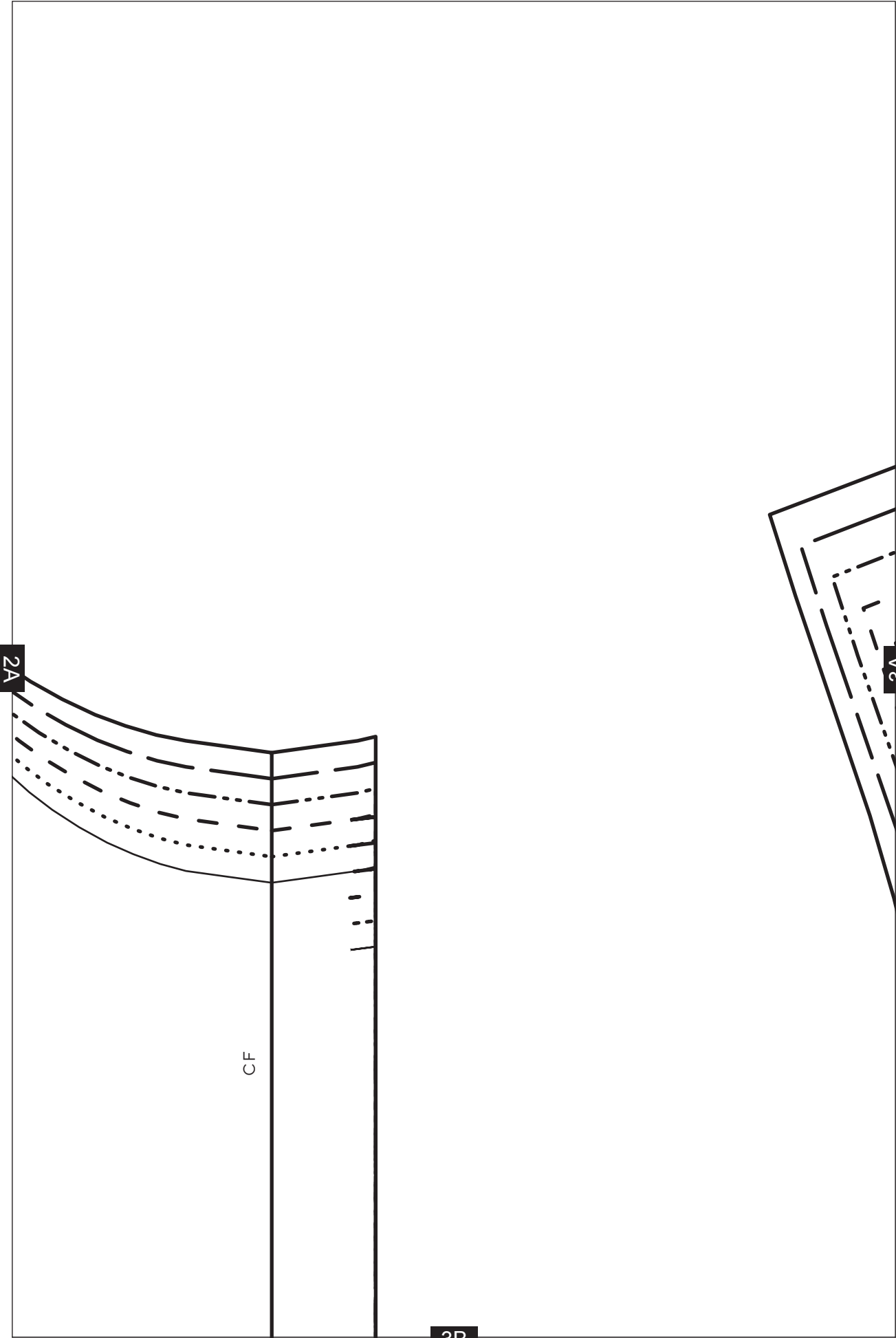
1.5 CM (5/8-IN) SEAM ALLOWANCE INCLUDED (UNLESS OTHERWISE STATED)

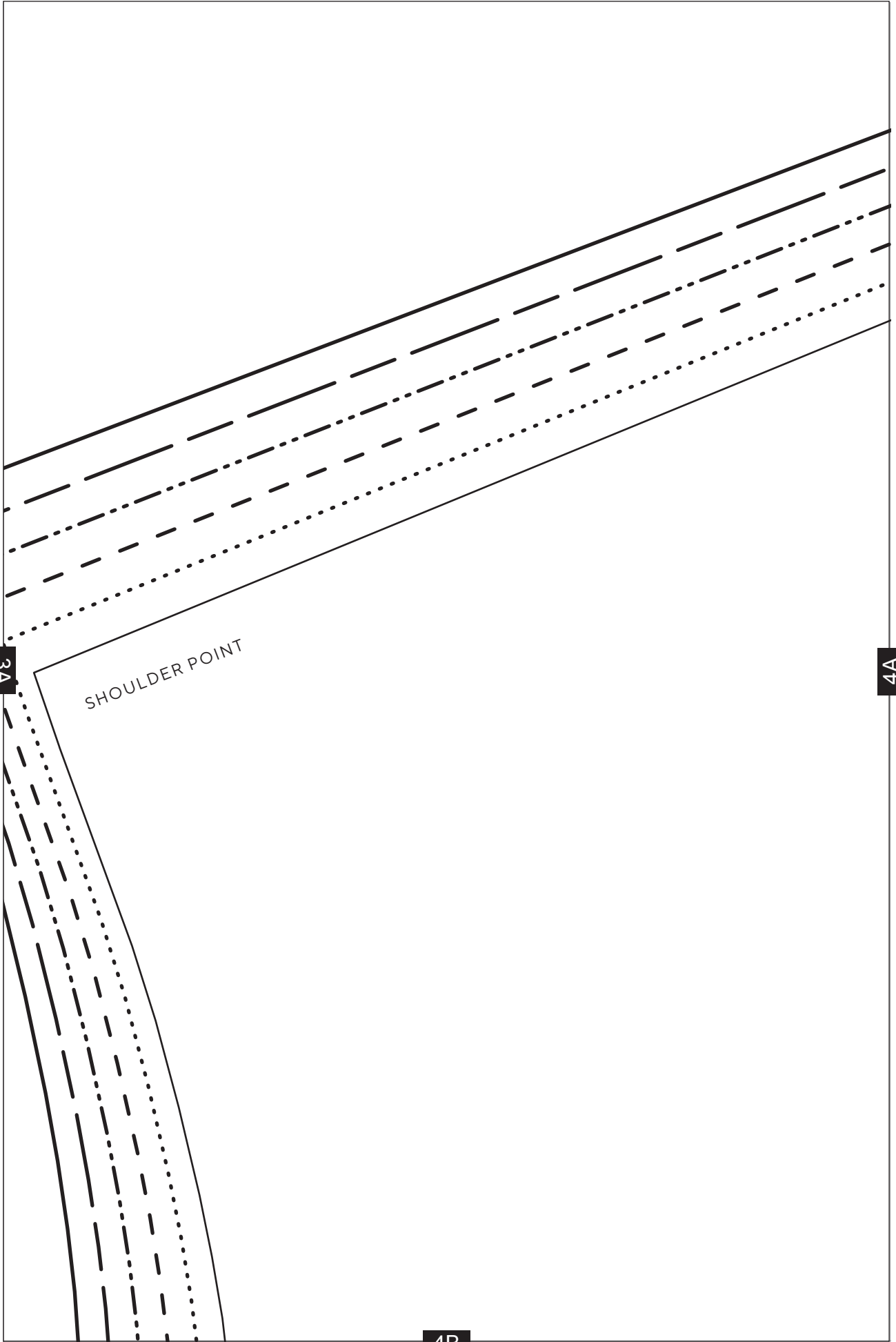
SIZING KEY

—————	34
.....	36
- - - - -	38
- · - · -	40
- - - - -	42
—————	44







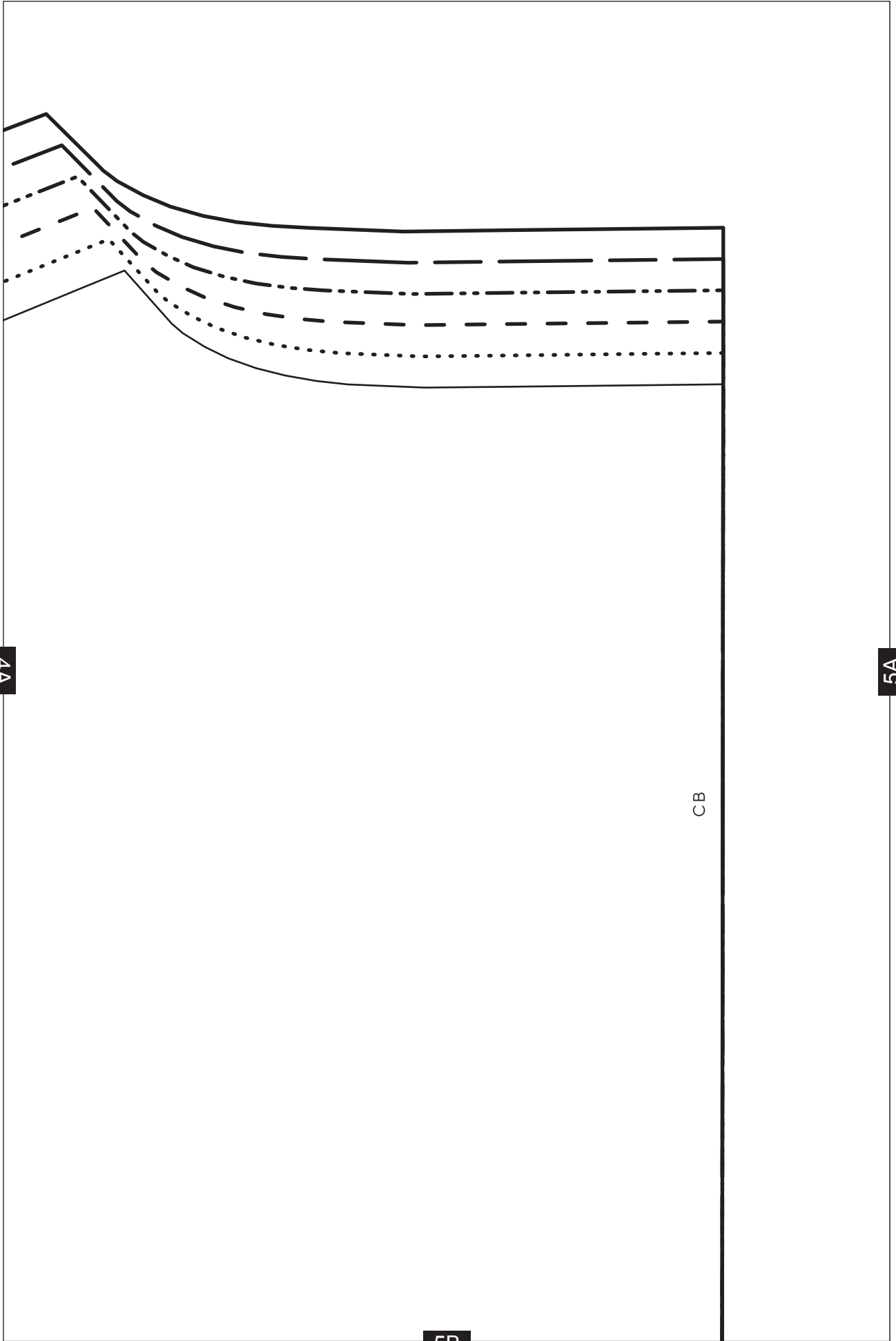


3A

SHOULDER POINT

4A

4B

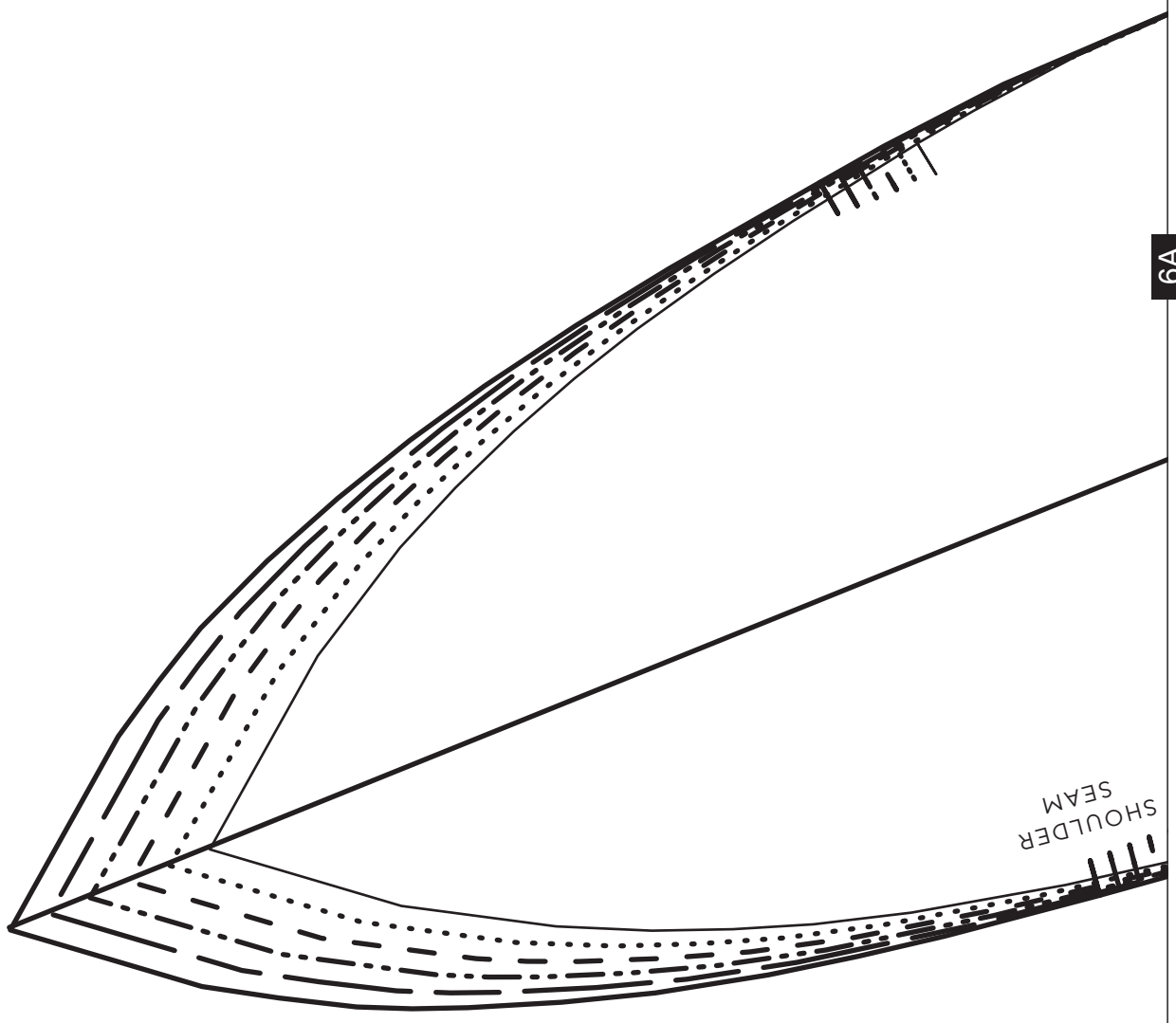


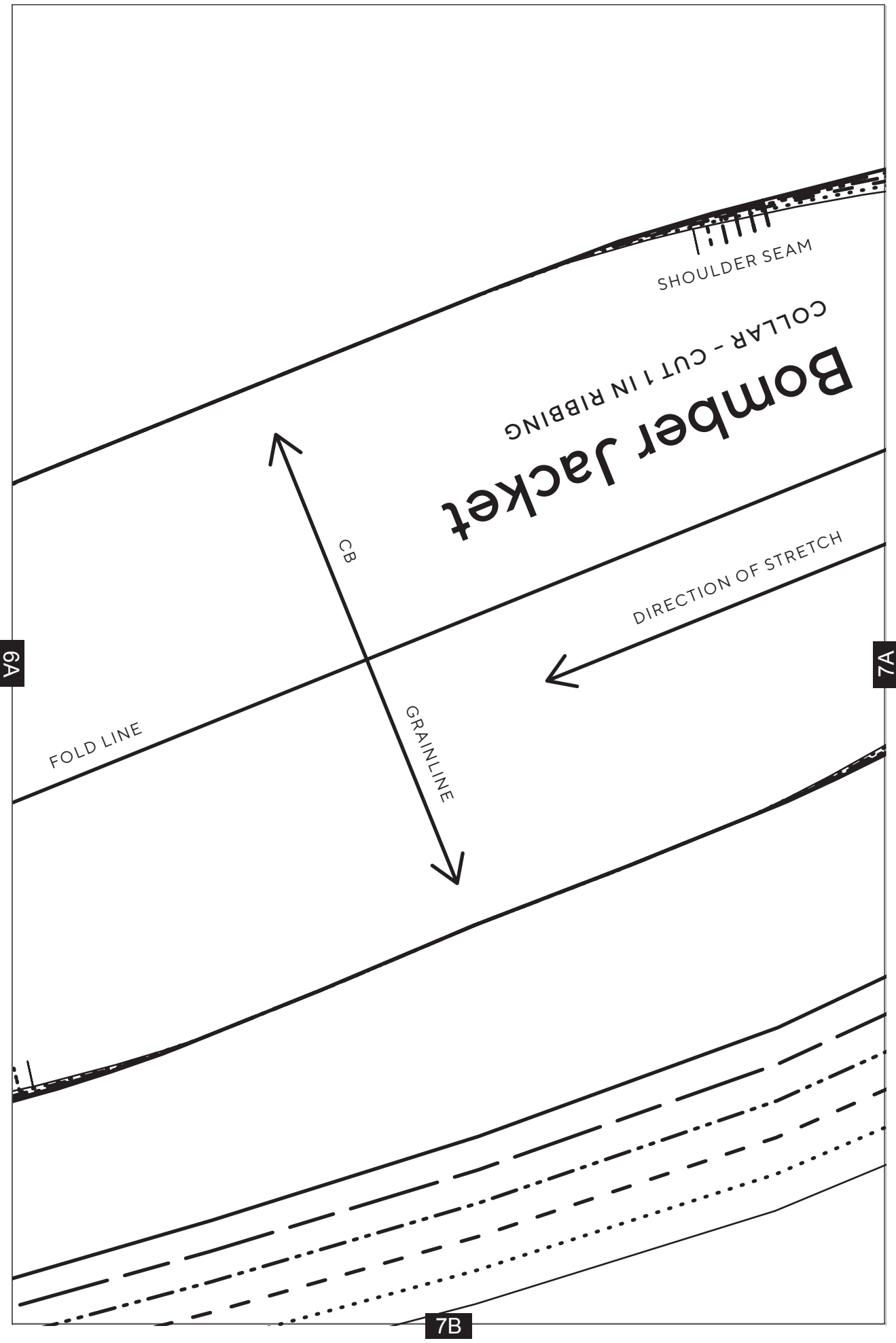
SHOULDER
SEAM

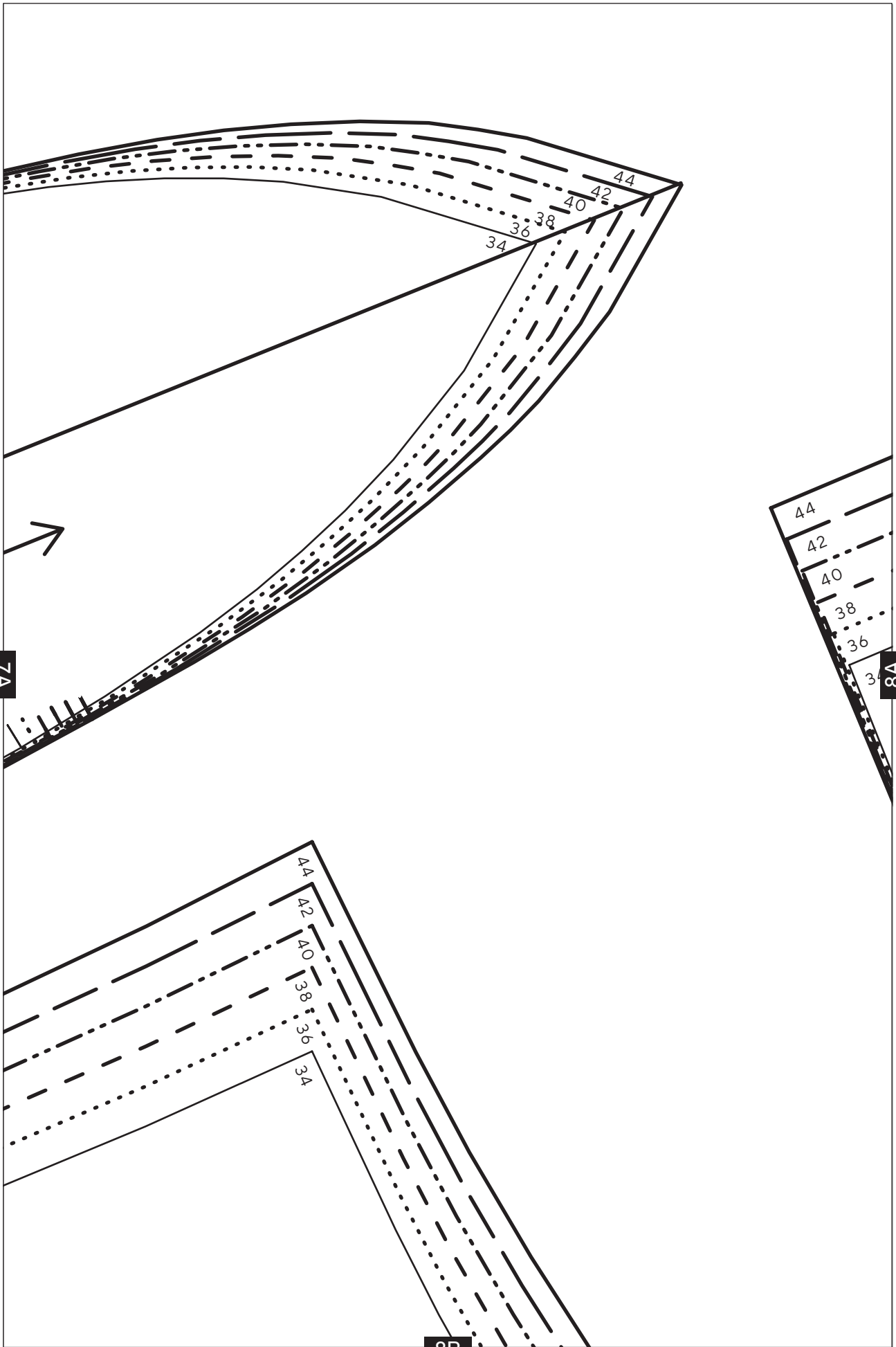
6A

5A

6B



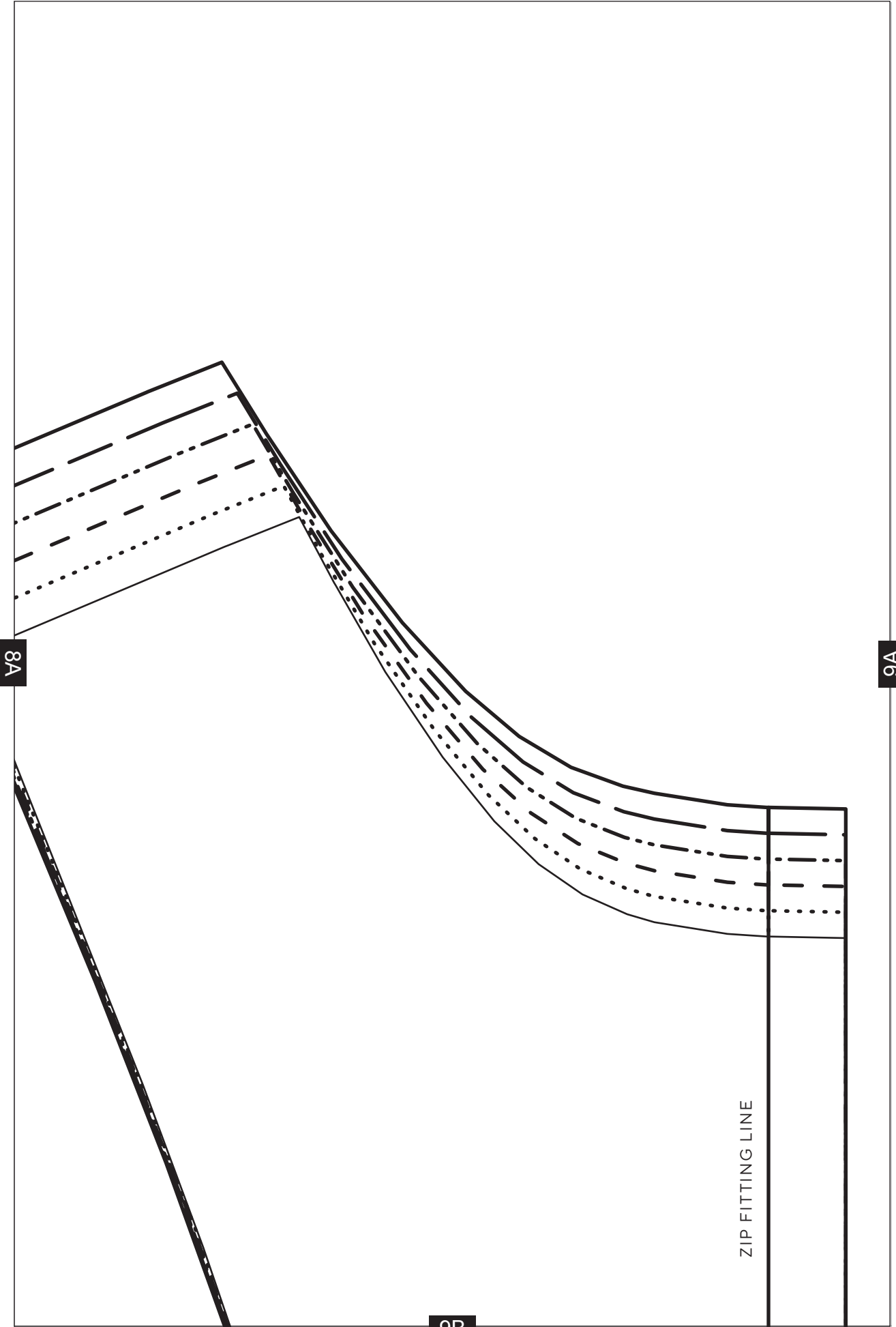




7A

8A

8B



44

42

40

38

36

ATTACH TO ZIP TAB

34

9A

10A

Bomber Jacket

WAISTBAND - CUT 1 ON FOLD IN RIBBING

10B

GRAINLINE



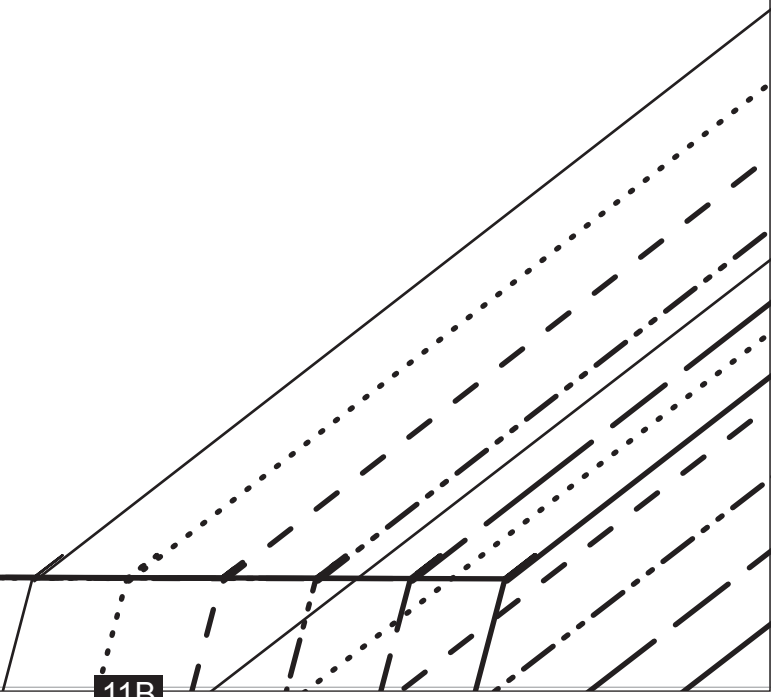
Bomber Jacket

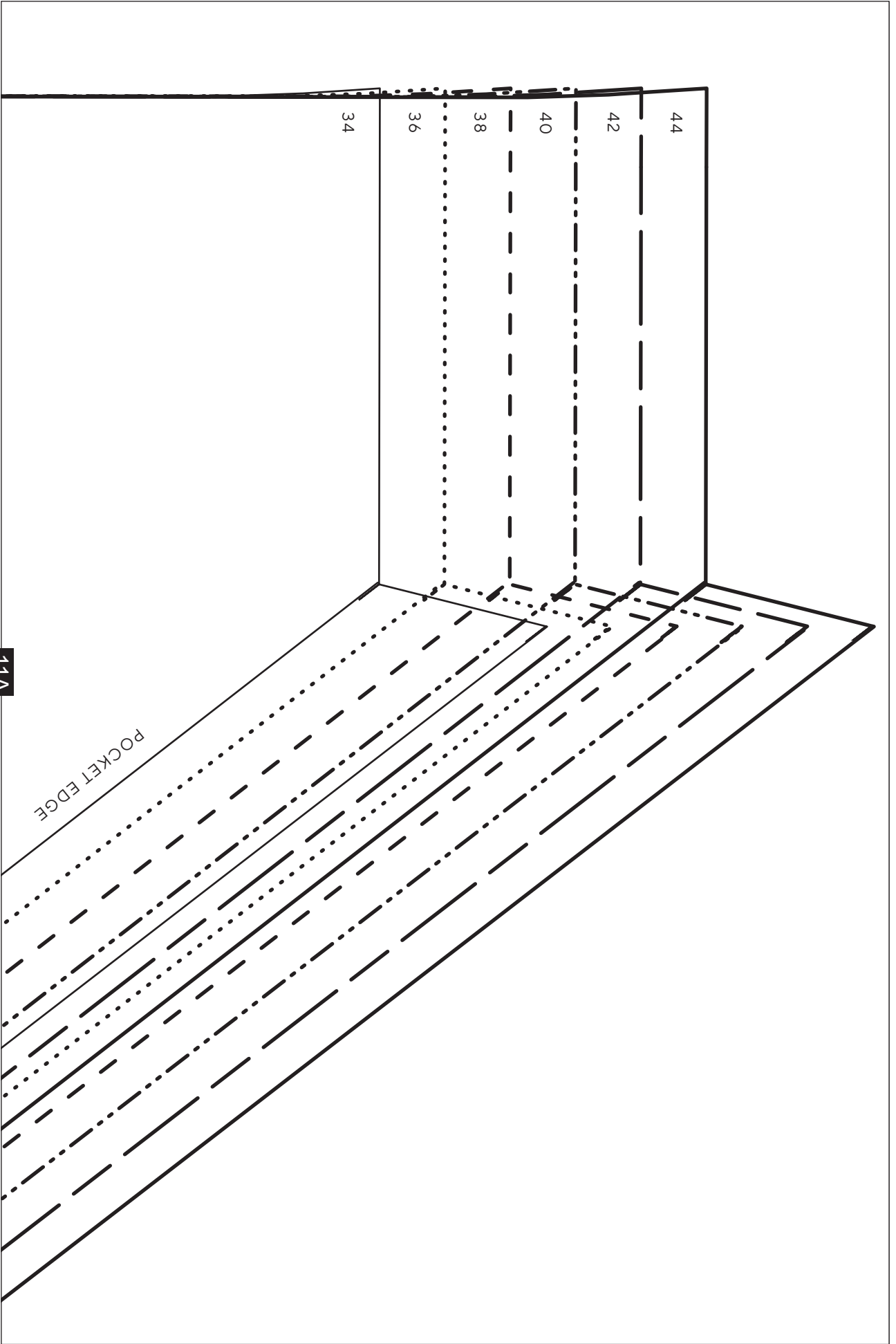
POCKET - CUT 2

11A

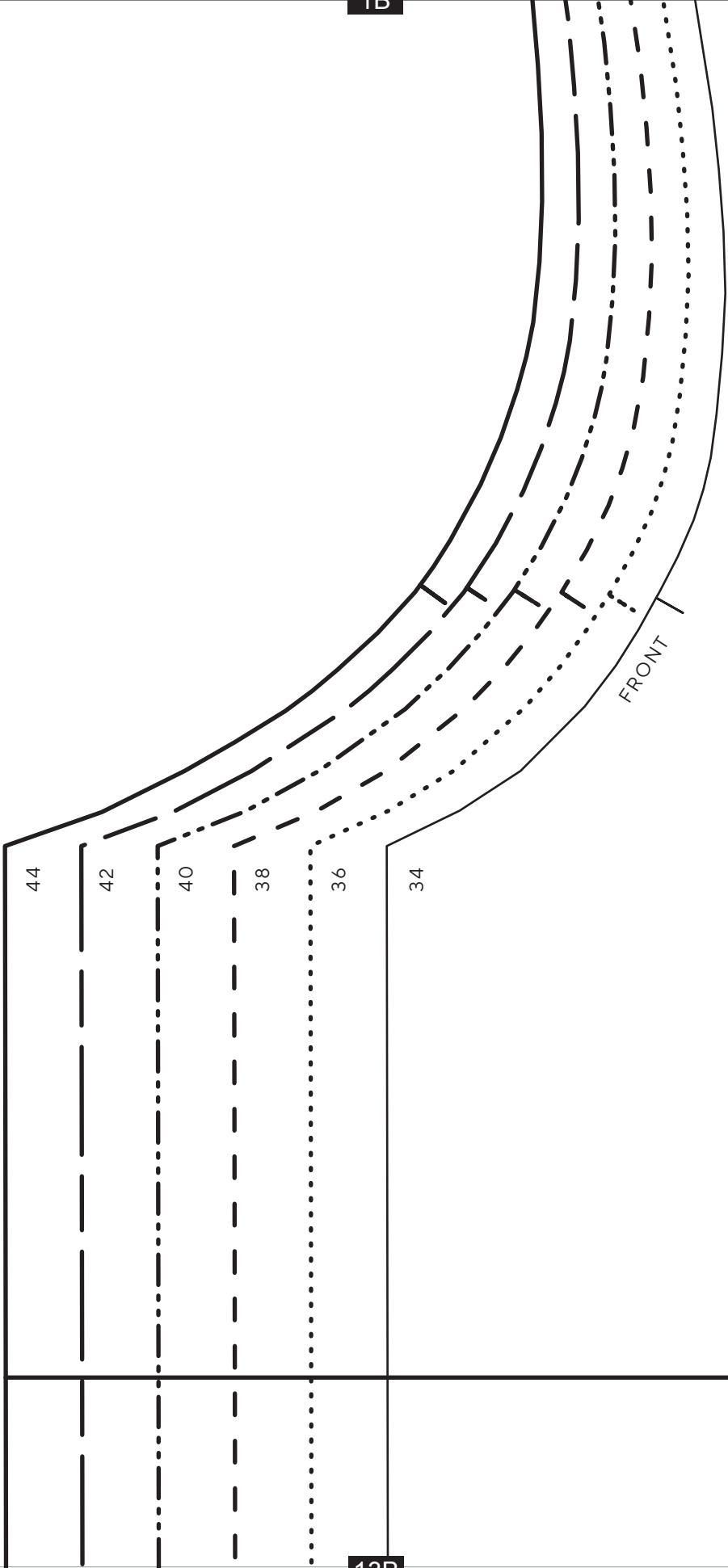
11B

10A





1B



13B

13A

2B

GRAINLINE



14A

ZIP TAB FOR CROPPED VERSION

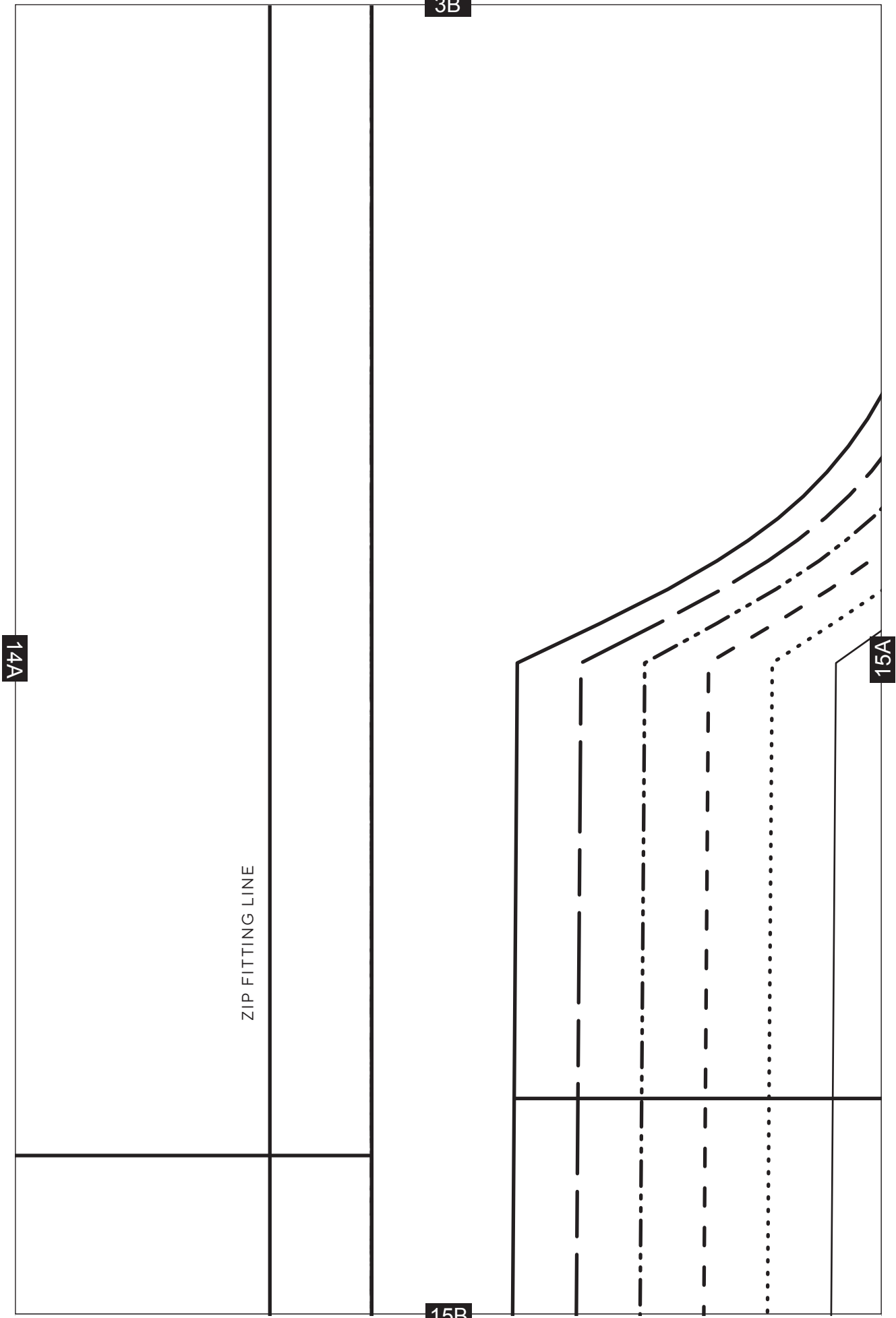
Bomber Jacket

FRONT JACKET - CUT 2

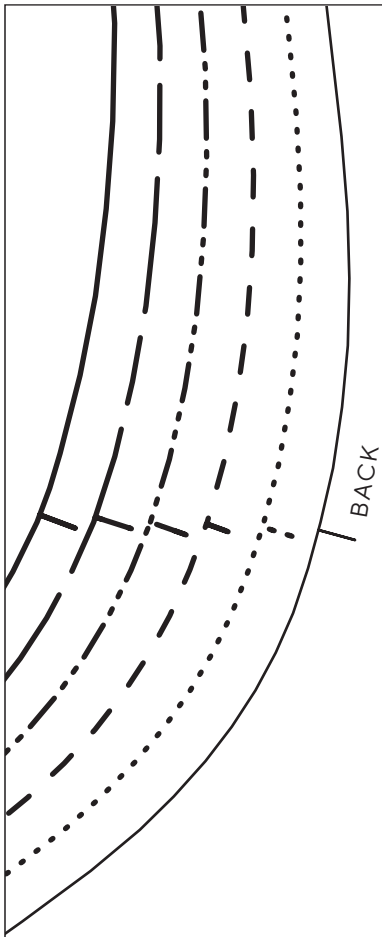
13A

VARIATION: CROPPED VERSION CUTTING LINE
ADD 1.5CM SEAM ALLOWANCE

14B



4B

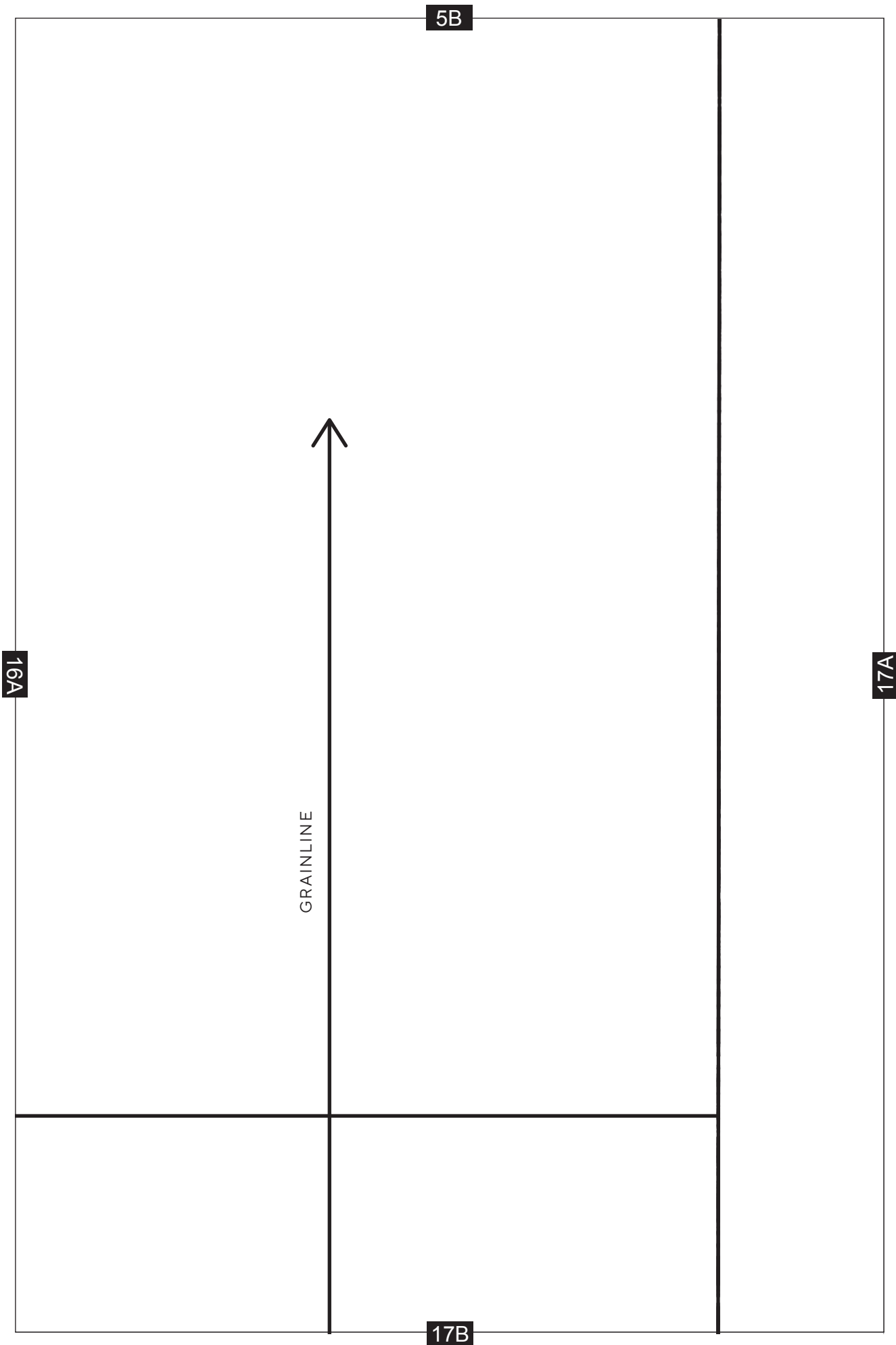


15A

16A

VARIATION: CROPPED VERSION CUTTING LINE
ADD 1.5CM SEAM ALLOWANCE

16B

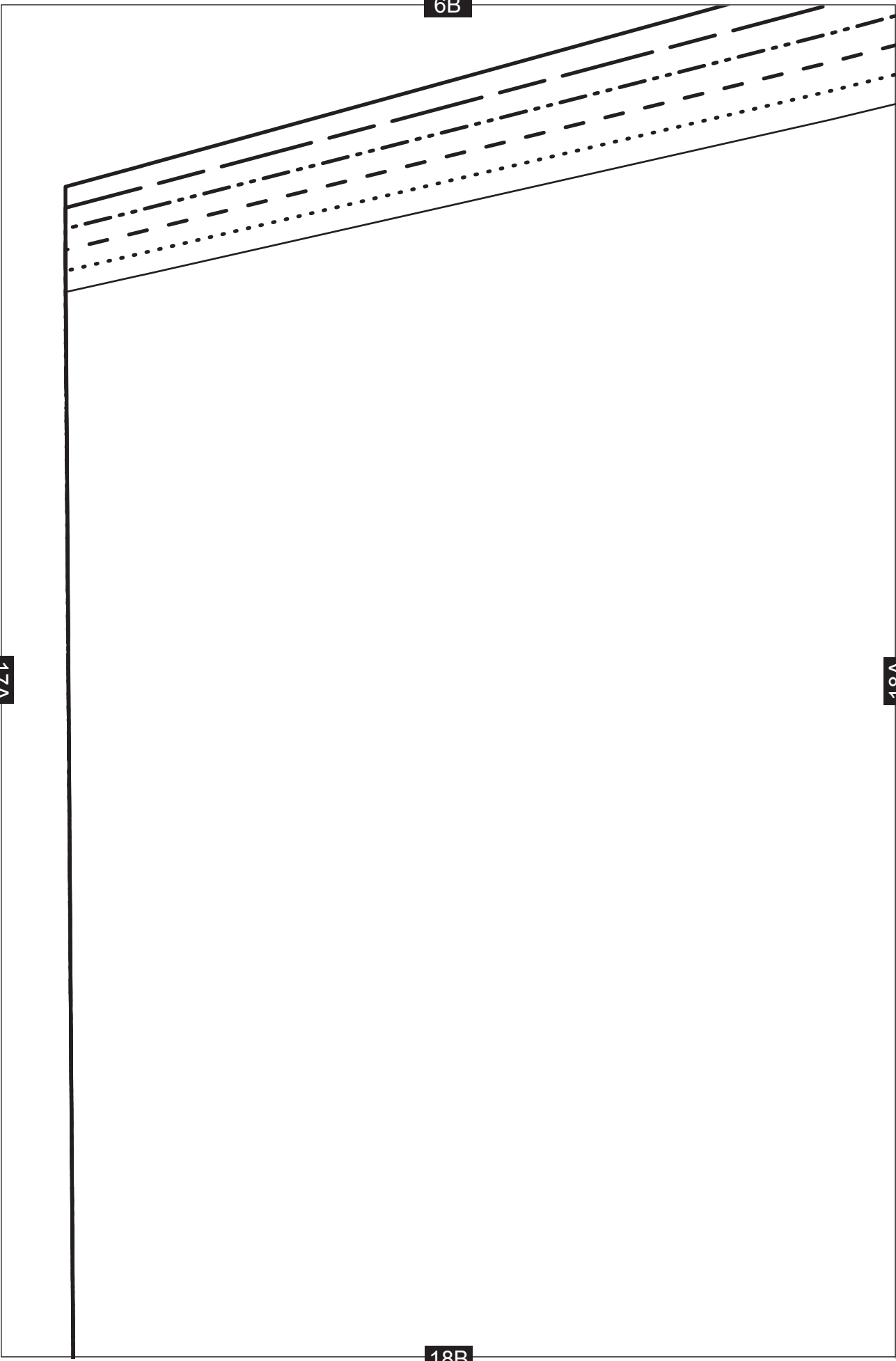


6B

17A

18A

18B



7B

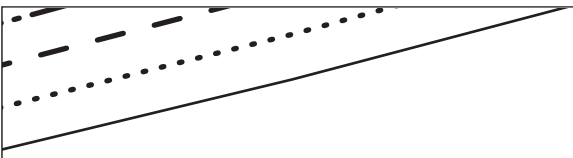
Bomber Jacket

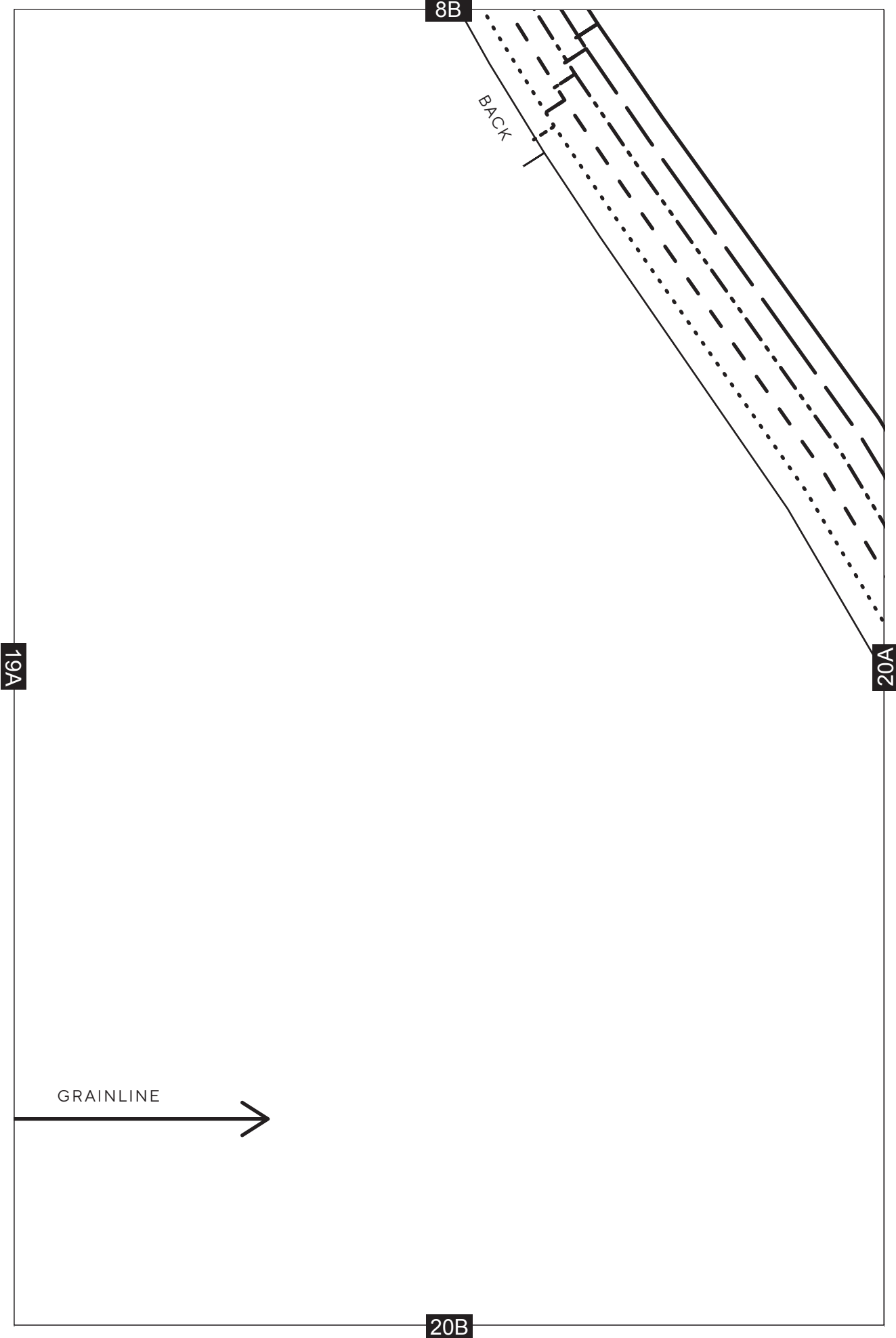
SLEEVE - CUT 2

19A

19B

18A





9B

Bomber Jacket

FRONT FACING - CUT 2 IN MAIN FABRIC
+ CUT 2 IN INTERFACING

GRAINLINE



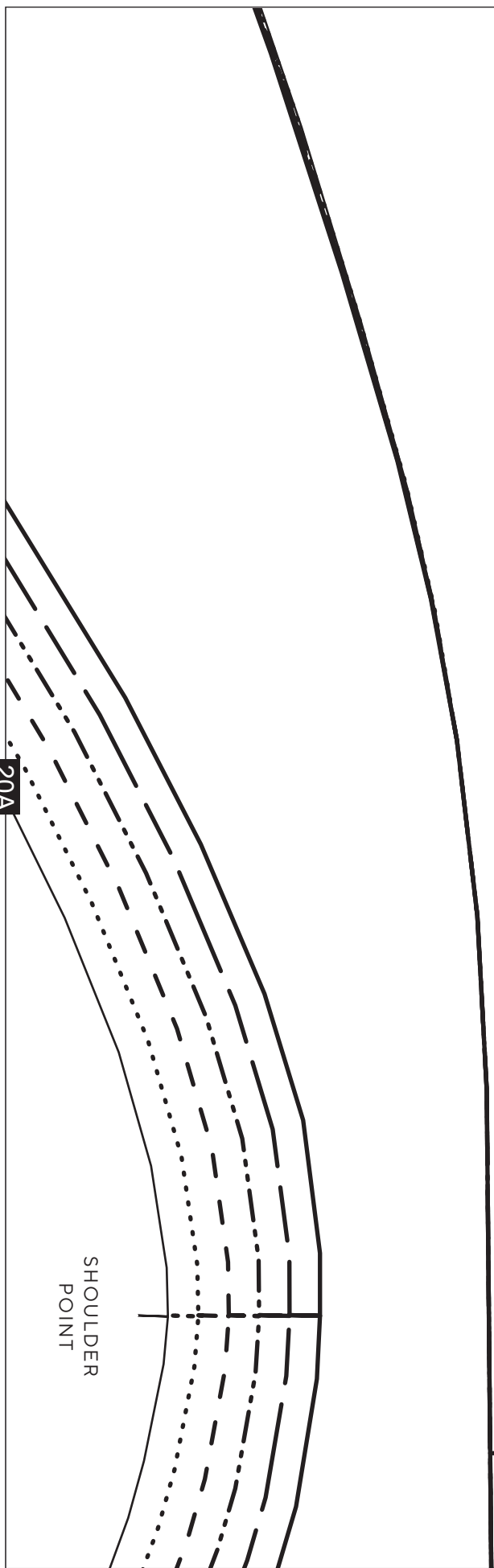
21B

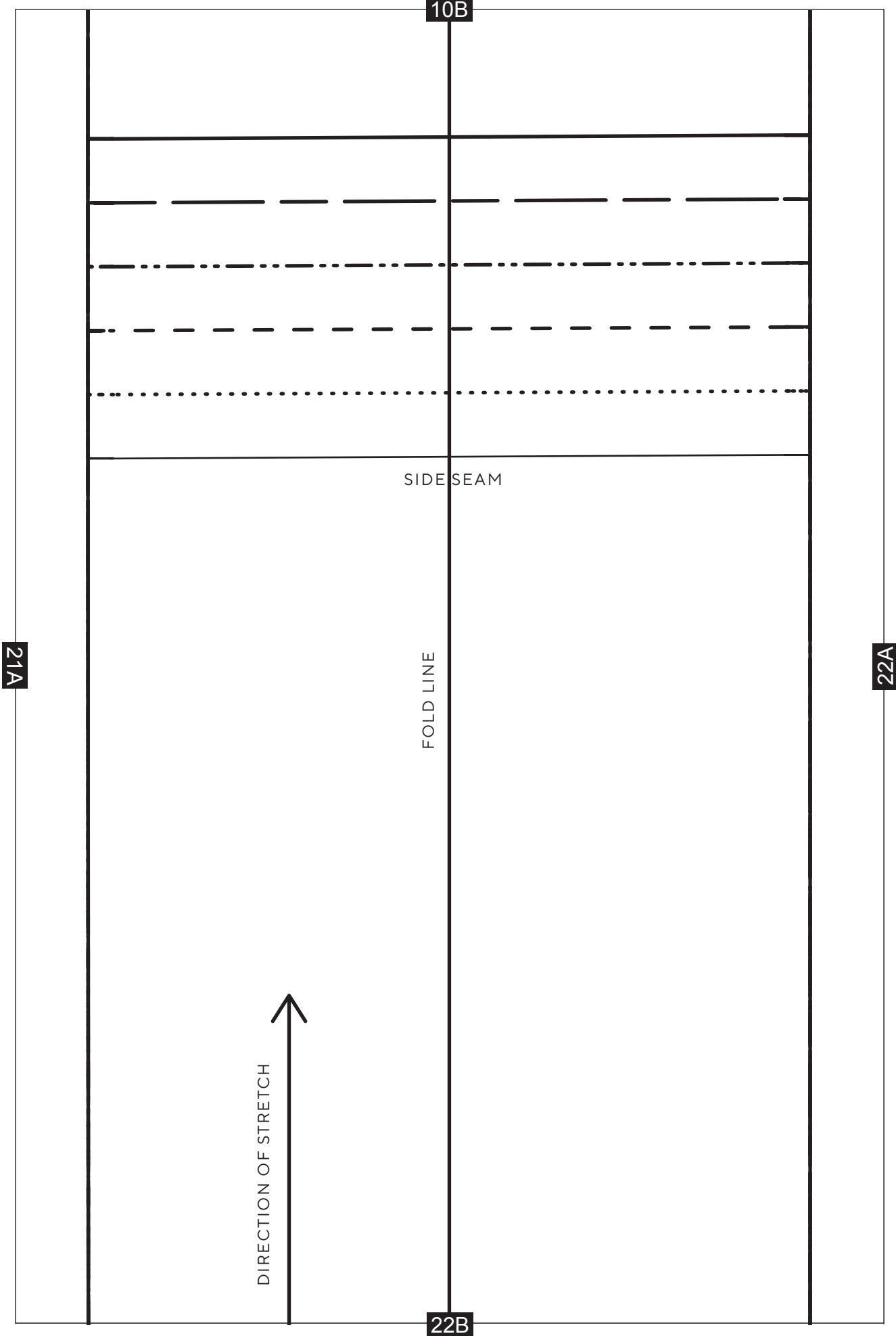
VARIATION: CROPPED
VERSION CUTTING LINE
ADD 1.5CM SEAM
ALLOWANCE

21A

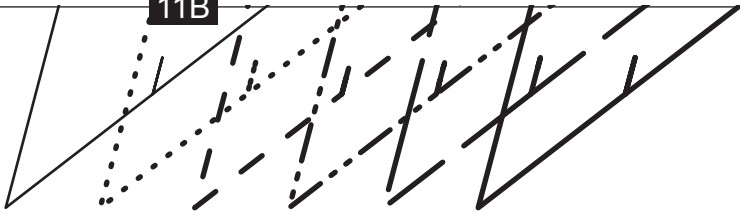
20A

SHOULDER
POINT





11B



Bomber Jacket

SLEEVE CUFF - CUT 2 IN RIBBING

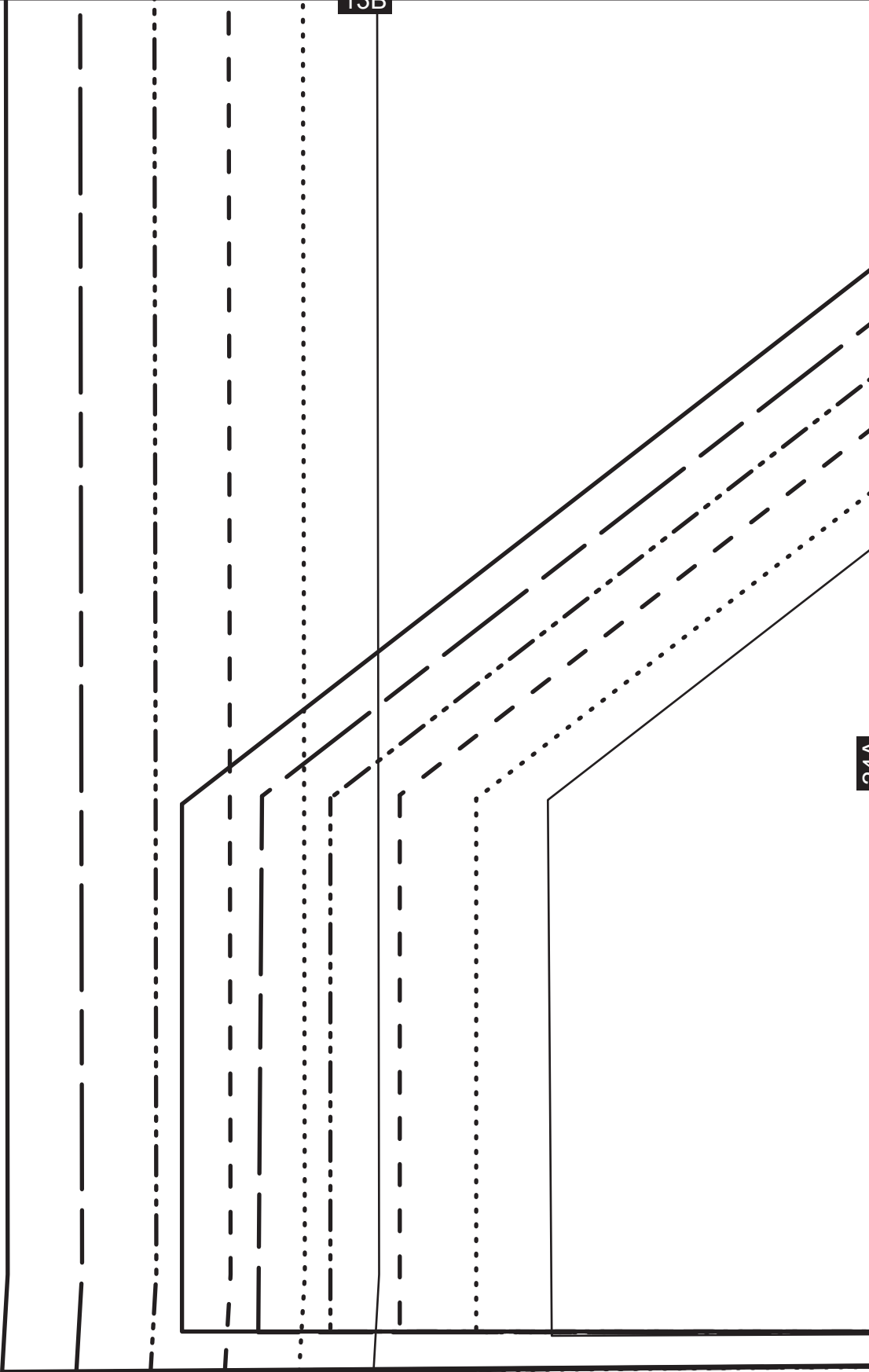
22A

FOLD LINE



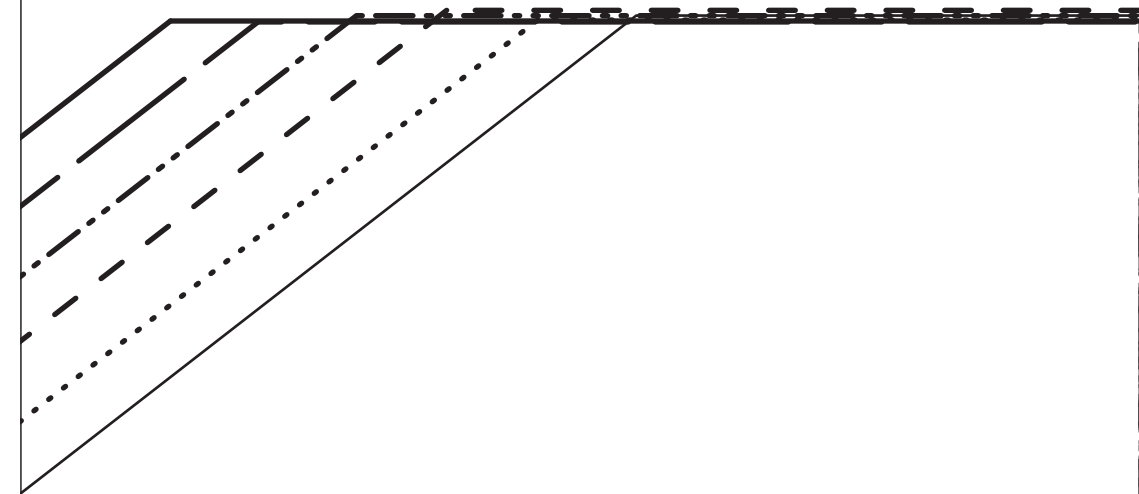
23B

13B



24A

14B



25A

POCKET POSITION

25A

ZIP TAB



26A

CF

15B

44

42

40

38

36

34

26A

16B

27A

27A

17B



28A

28A

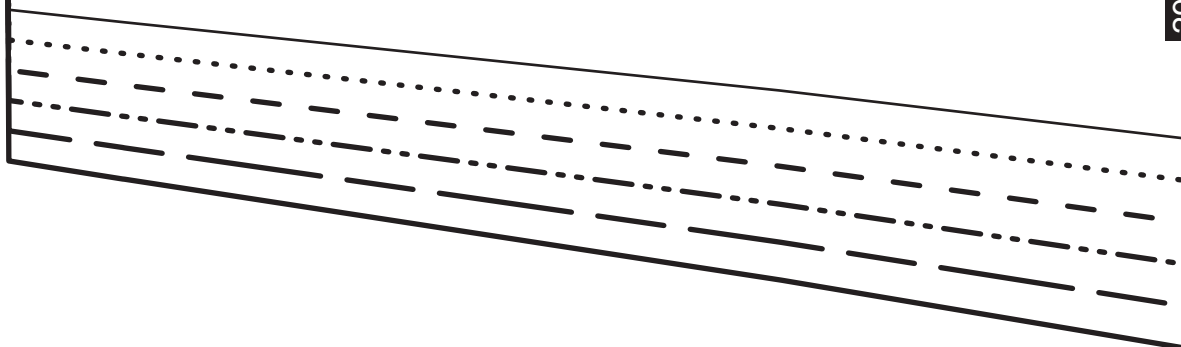
Bomber Jacket

BACK JACKET - CUT 2

18B

29A

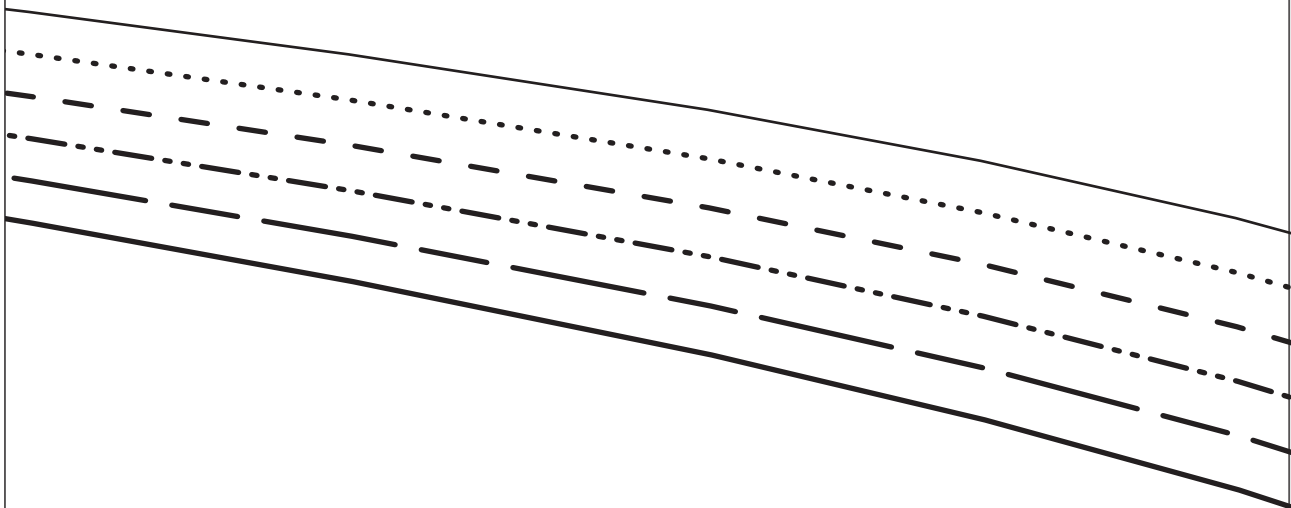
29A



19B

30A

30A

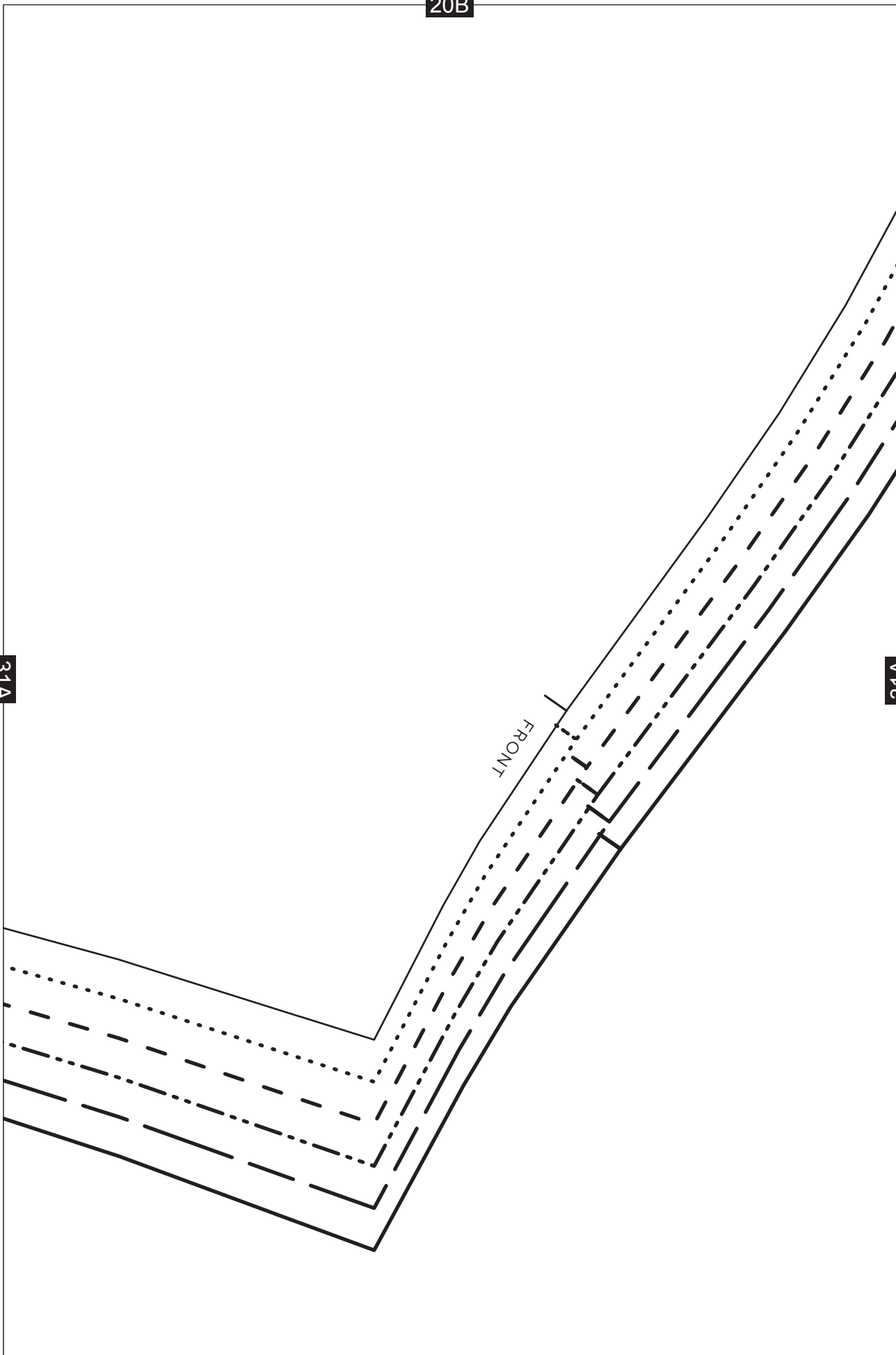


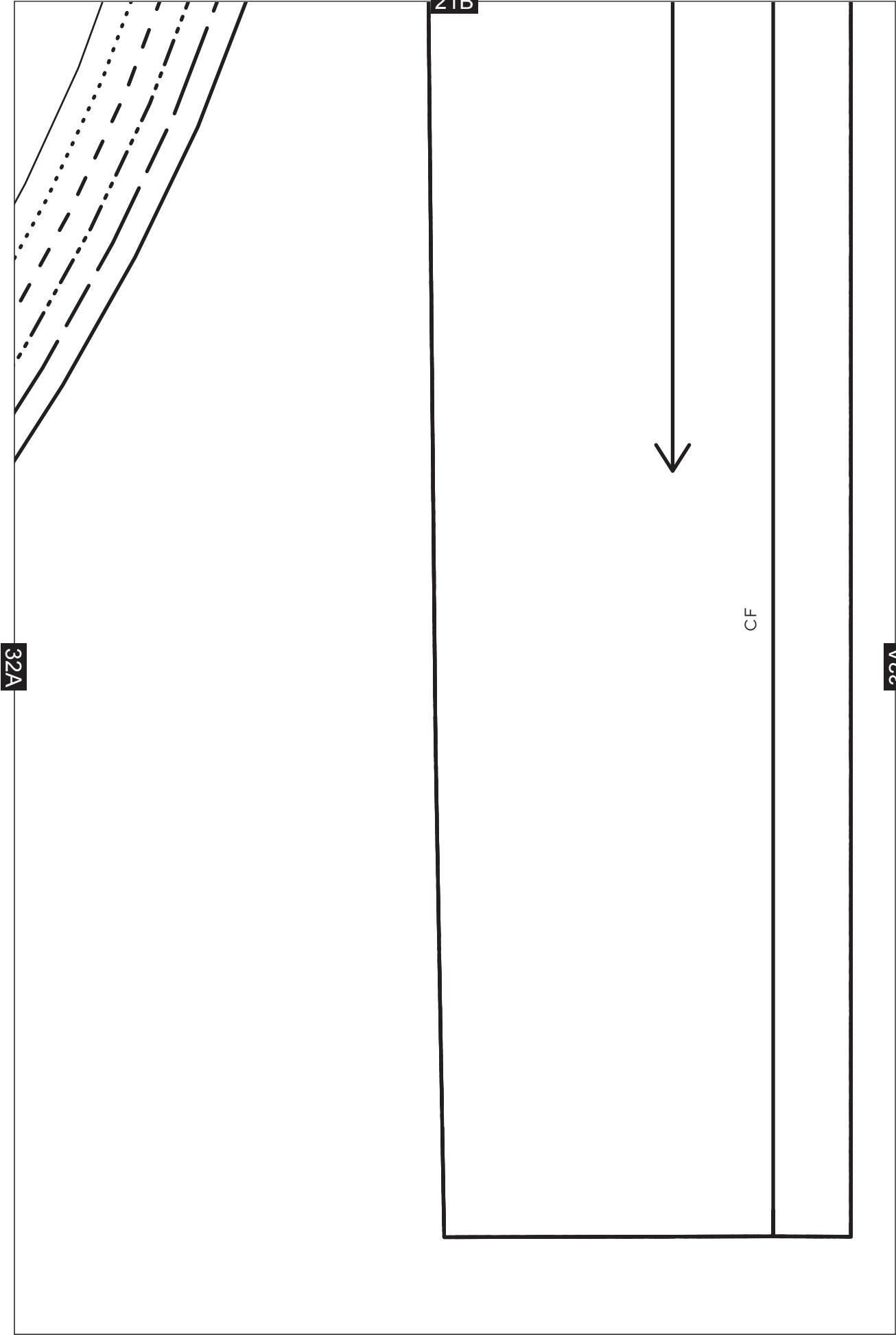
20B

31A

31A

FRONT





21B

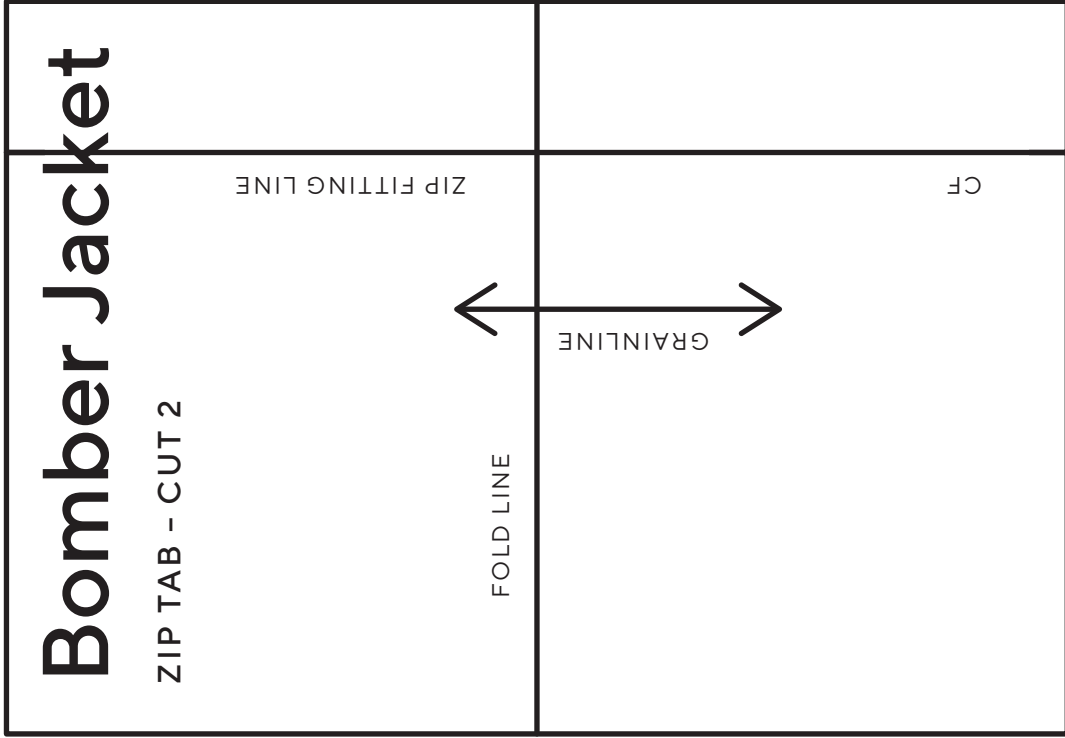
32A

32A

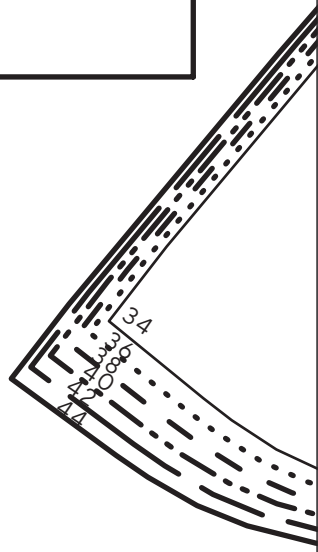
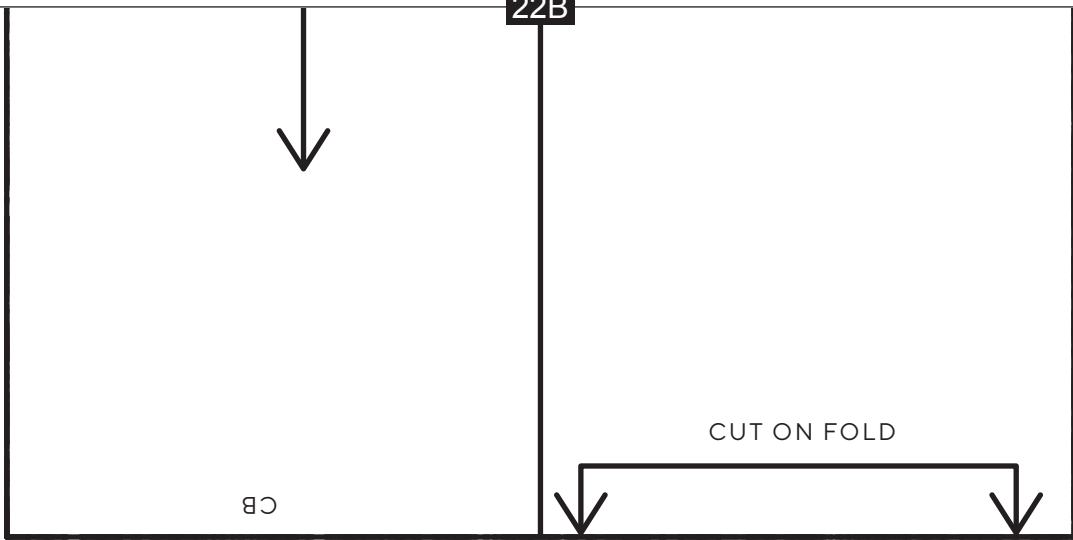
CF



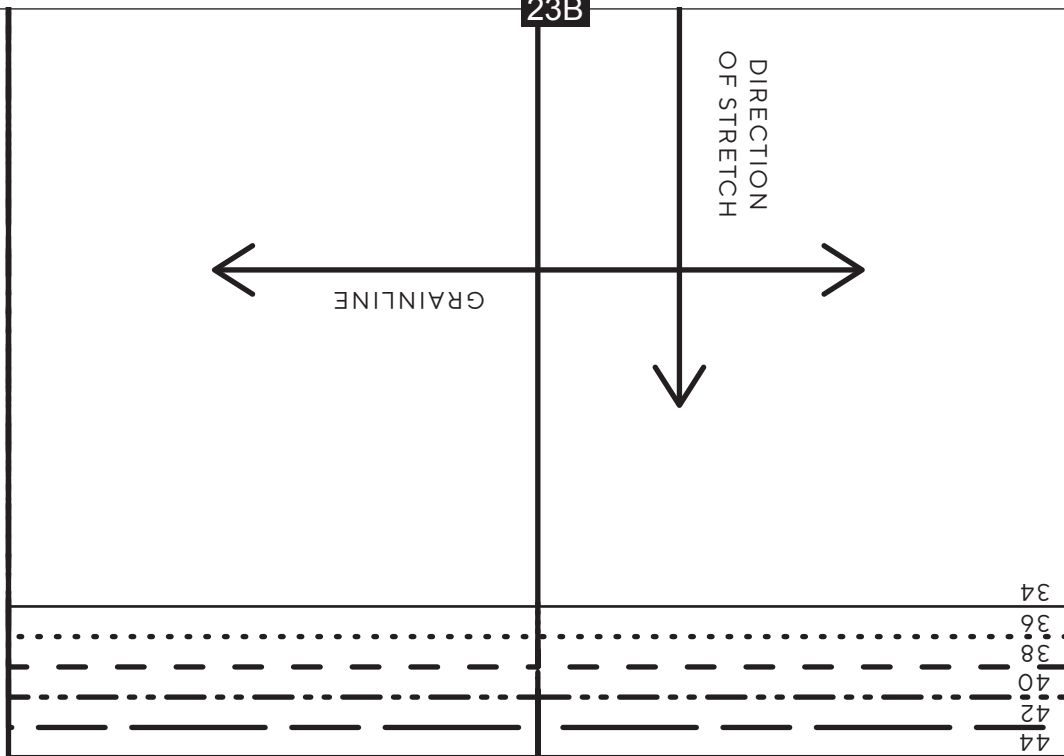
33A



33A



23B



34A

