

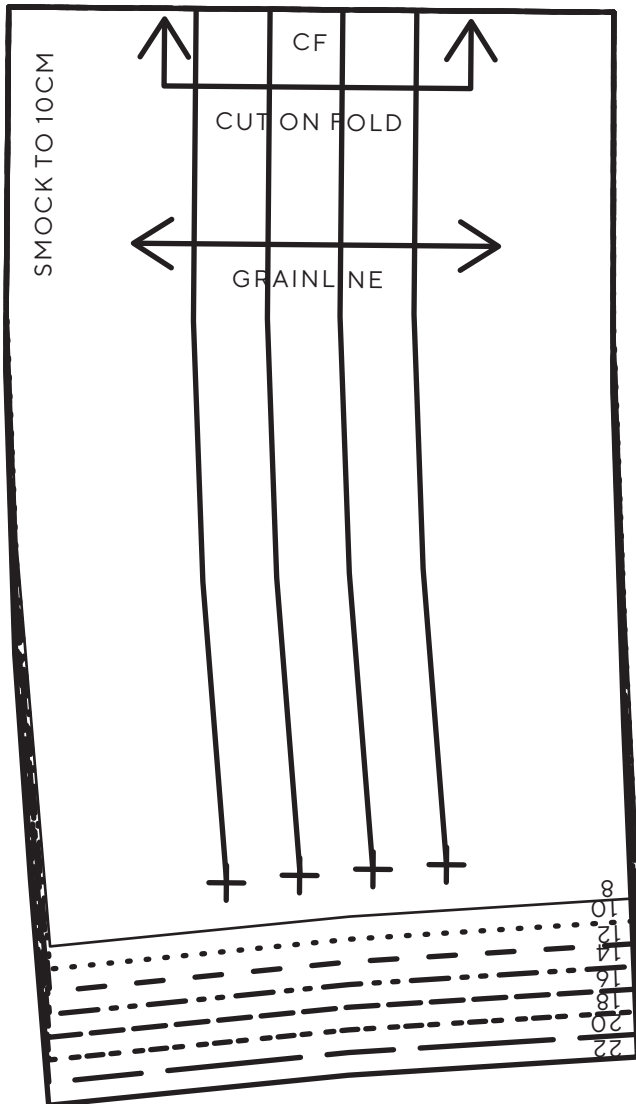
TEST SQUARE: 10CM x 10CM / 4 INCHES x 4 INCHES



Summer Dress & Blouse

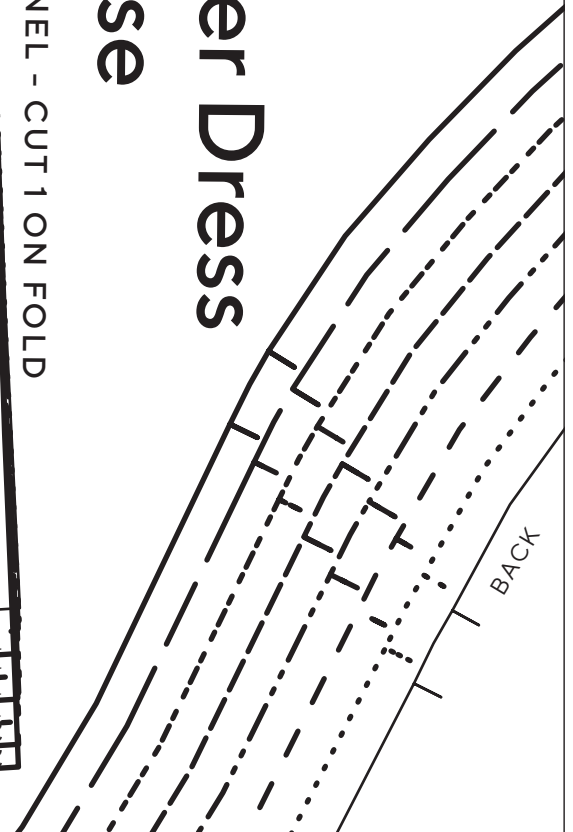
PROJECT DESIGN © LOVE PRODUCTIONS 2020
THIS DESIGN IS PROTECTED BY COPYRIGHT
AND MUST NOT BE MADE FOR RESALE.

1.5 CM (5/8-IN) SEAM ALLOWANCE INCLUDED (UNLESS OTHERWISE STATED)



1B

Summer Dress & Blouse



1A

SIZING KEY

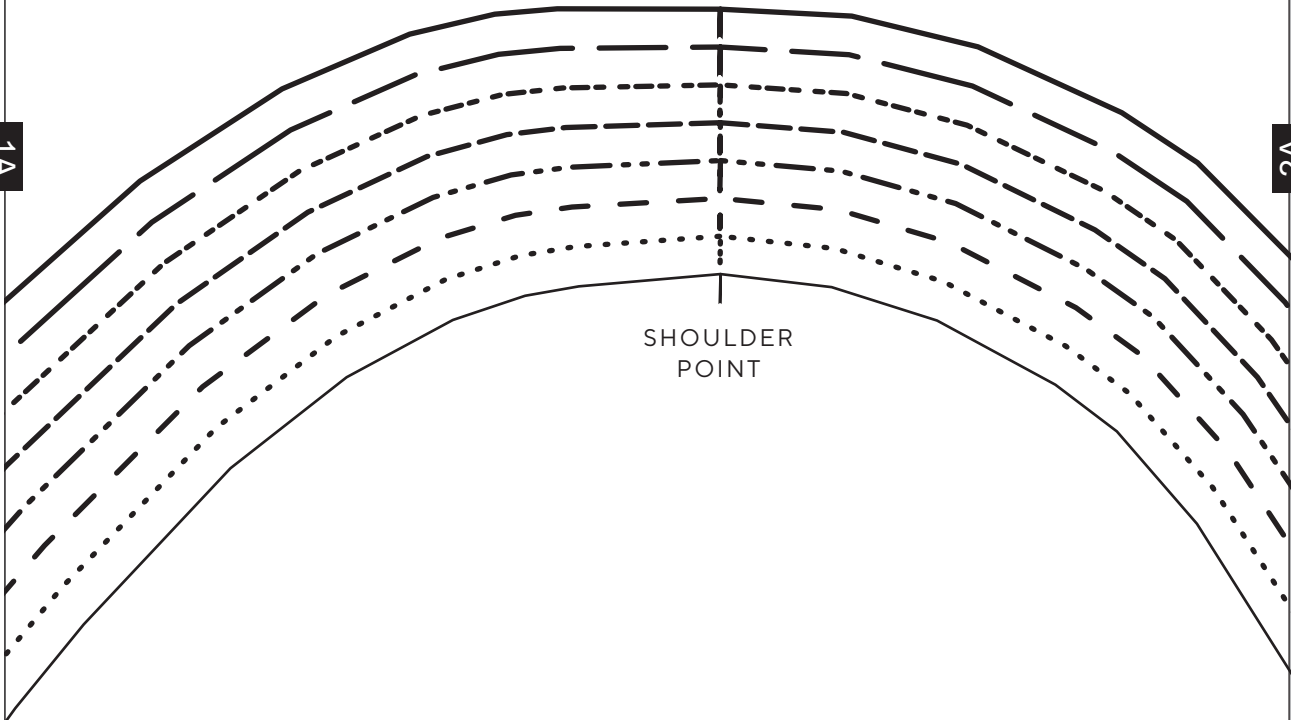
—————	8
.....	10
- - - - -	12
- · - · -	14
- - - - -	16
- · - · -	18
- - - - -	20
—————	22

1A

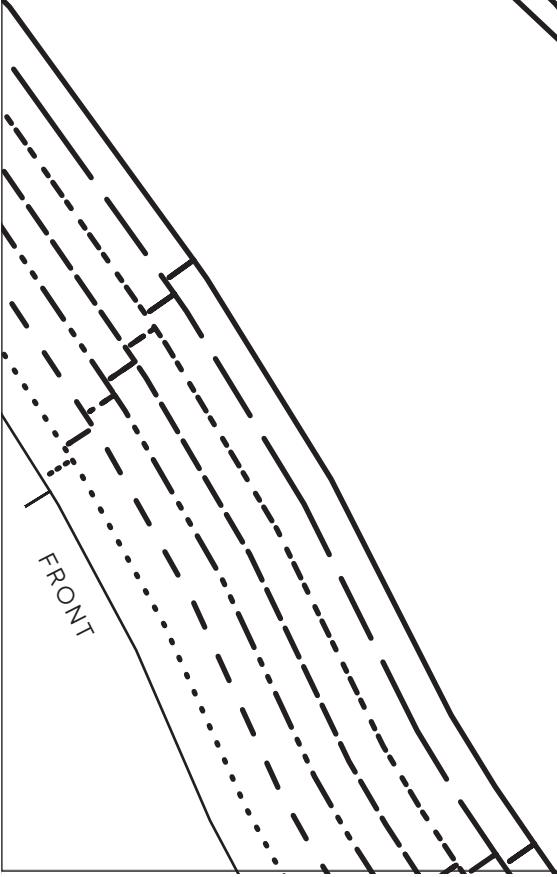
2A

SHOULDER
POINT

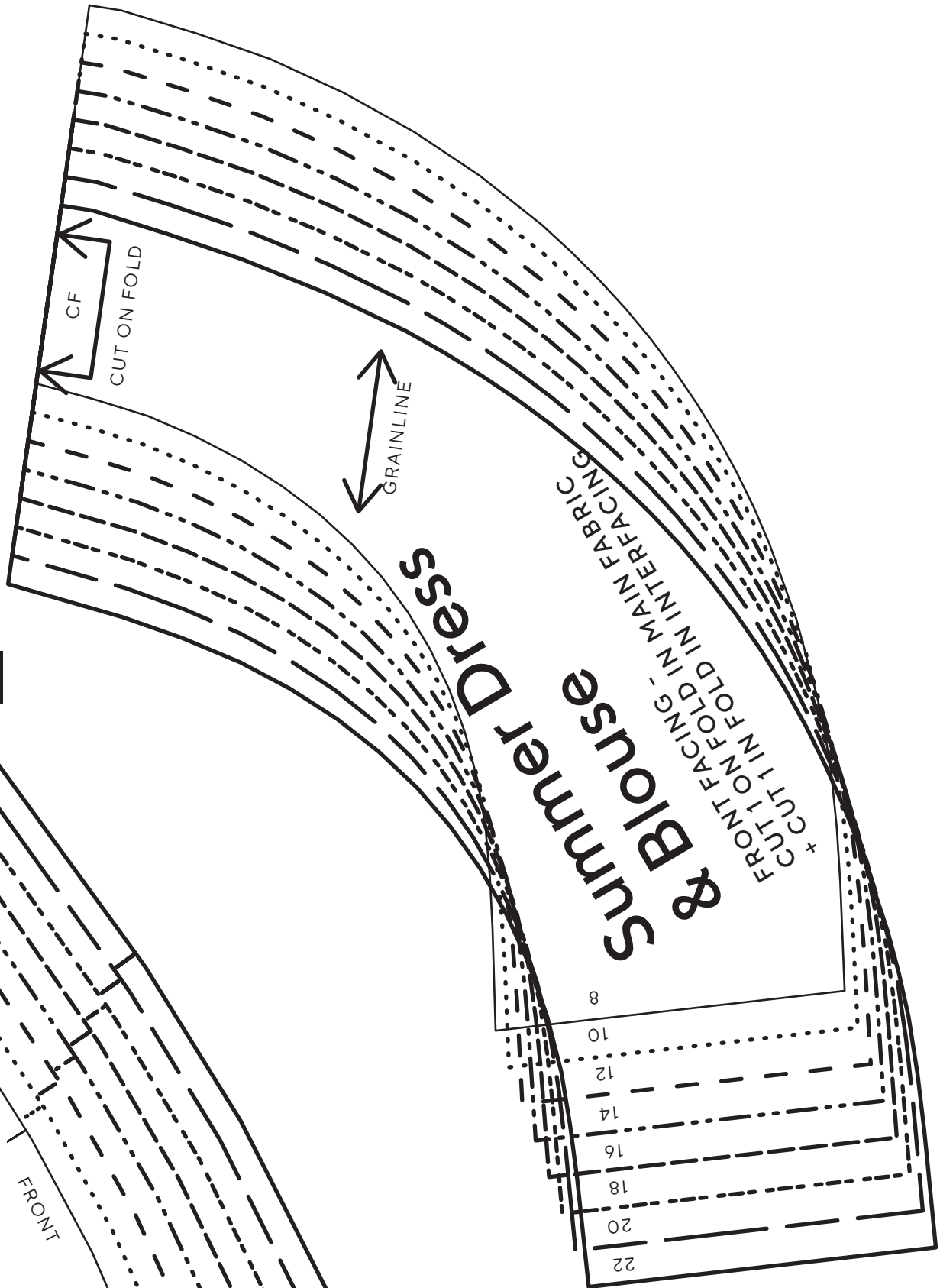
2B



2A

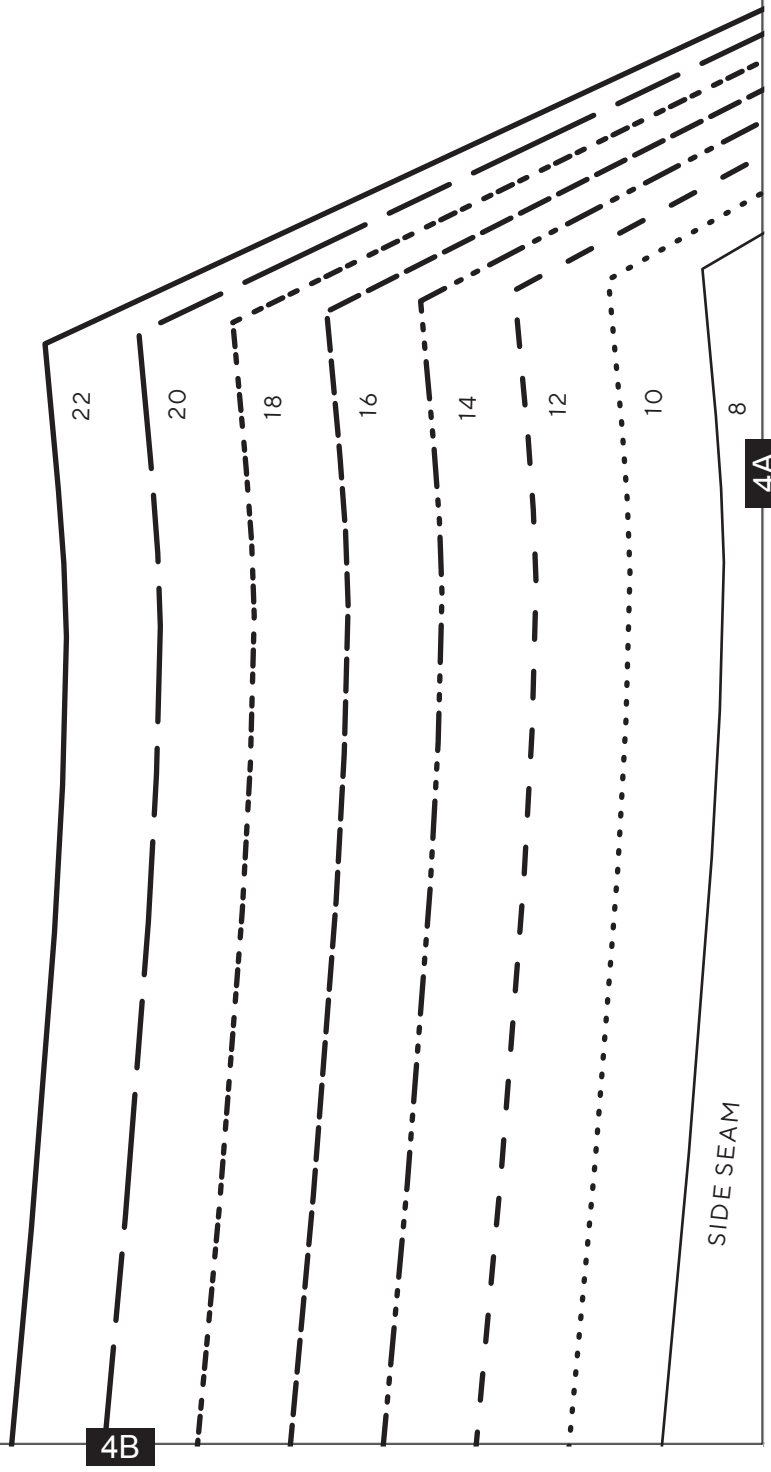


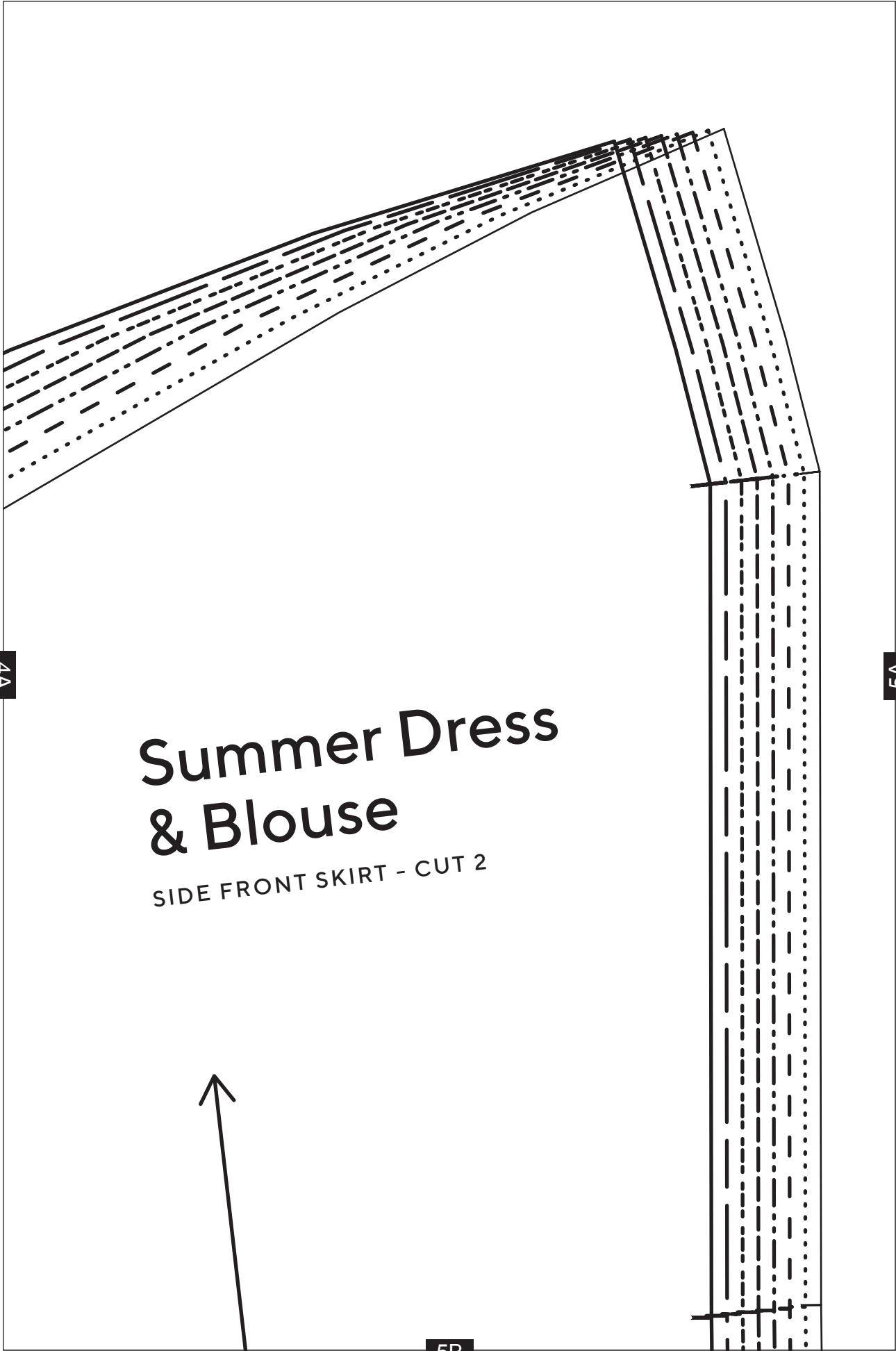
3B



3A

3A





4A

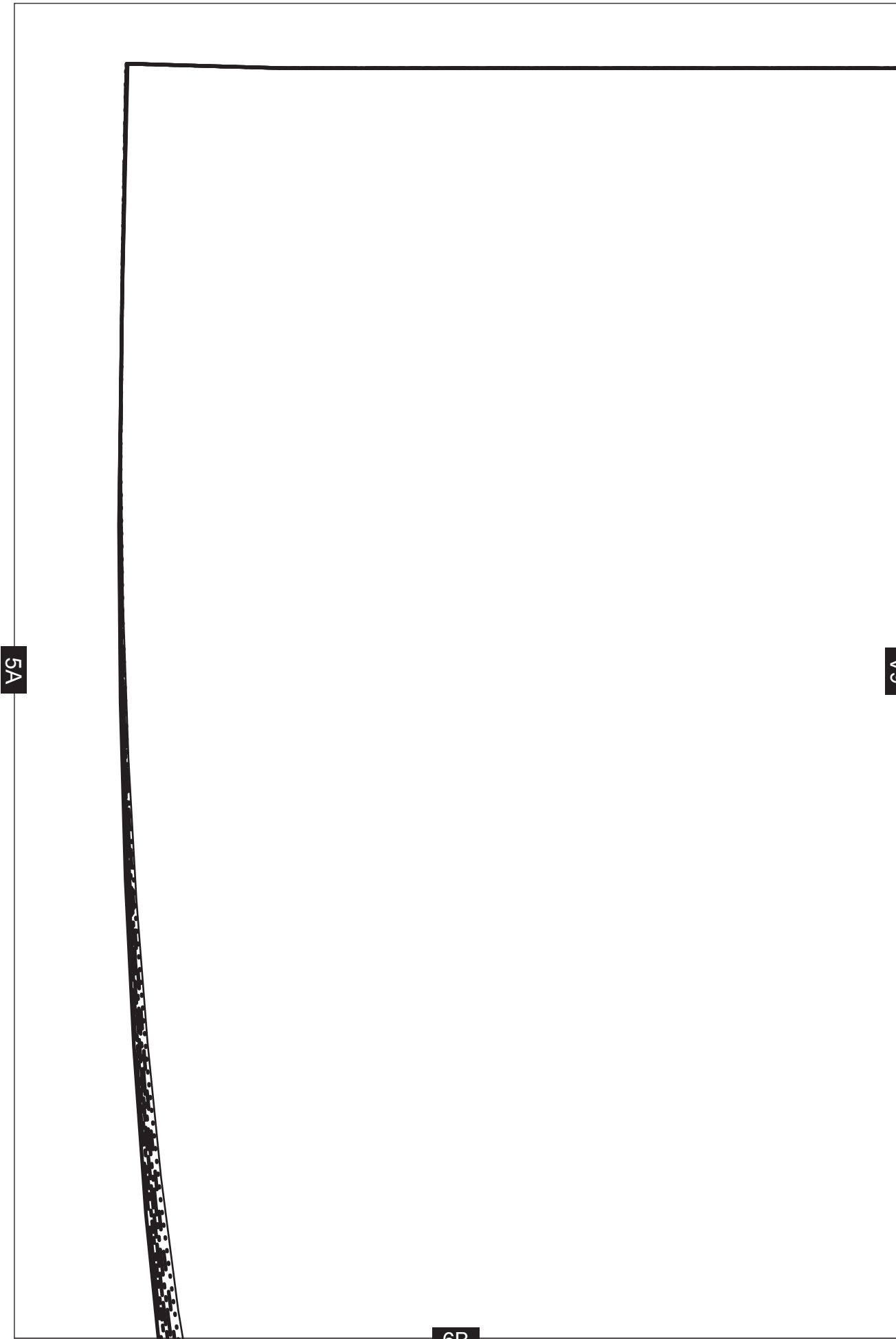
5A

Summer Dress & Blouse

SIDE FRONT SKIRT - CUT 2



5B



5A

6A

6B

CB

RAINLINE

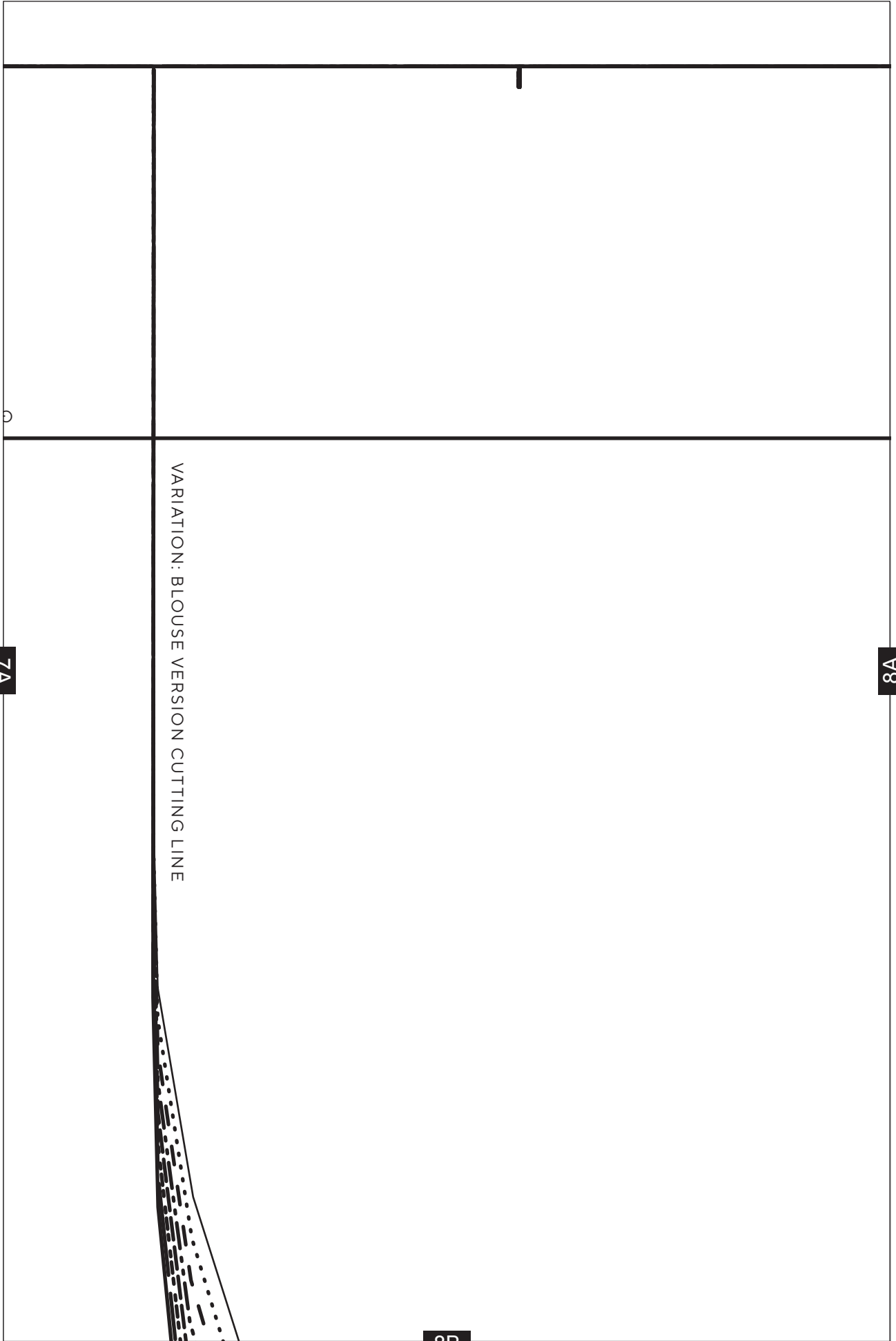


6A

7A

**Summer Dress
& Blouse**
BACK SKIRT - CUT 2

7B

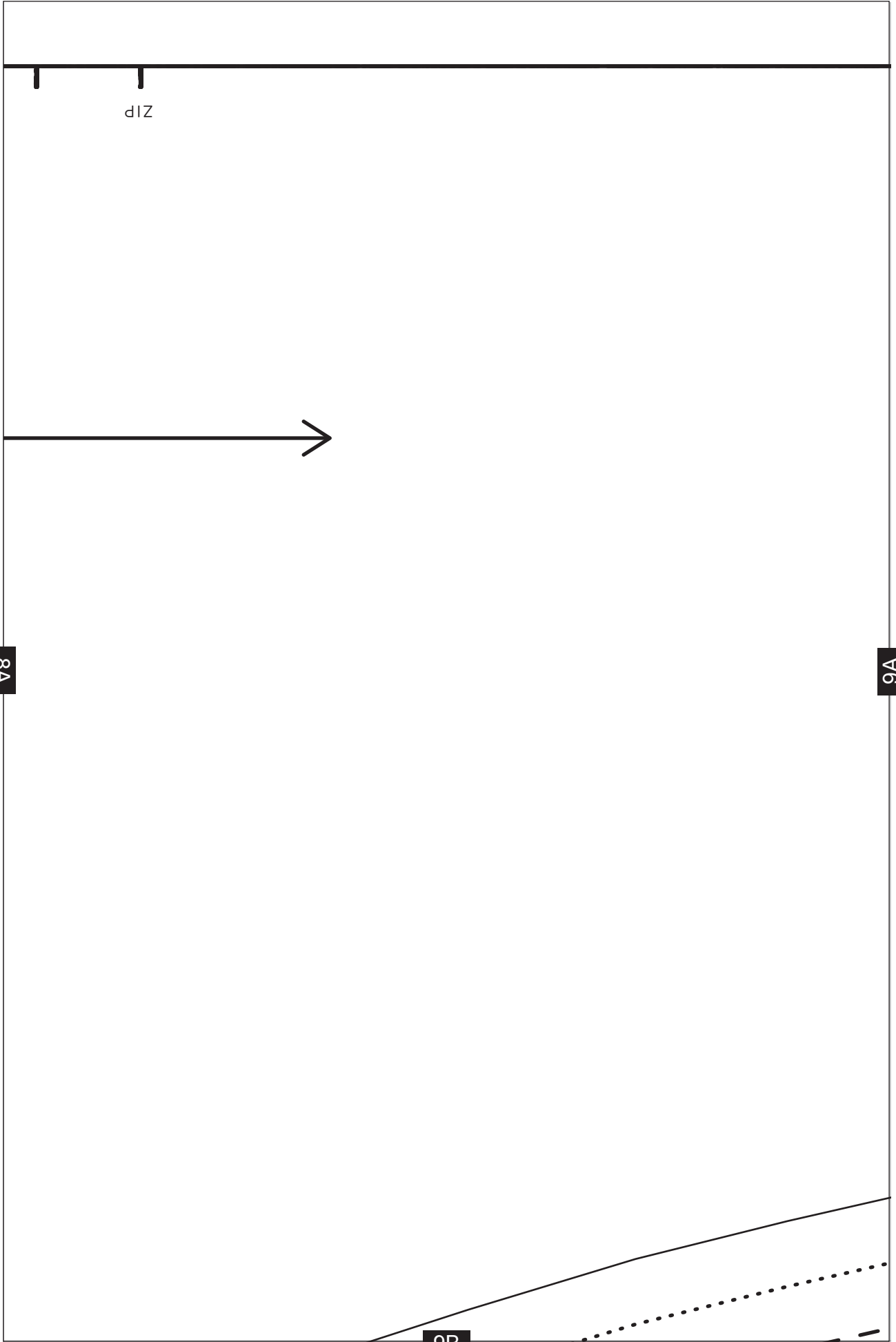


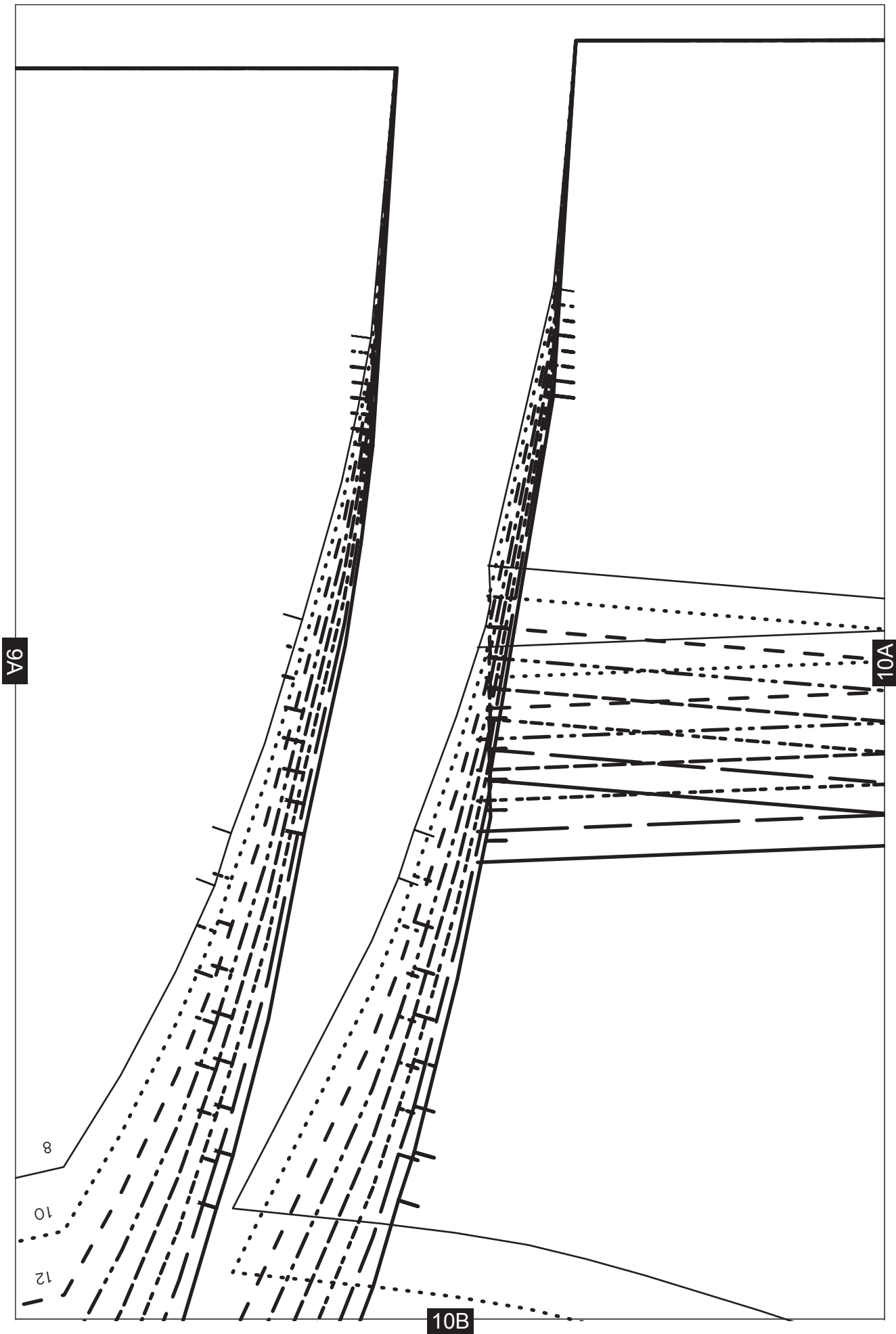
7A

VARIATION: BLOUSE VERSION CUTTING LINE

8A

8B





CB



GRAINLINE

BACK BODICE - CUT 2

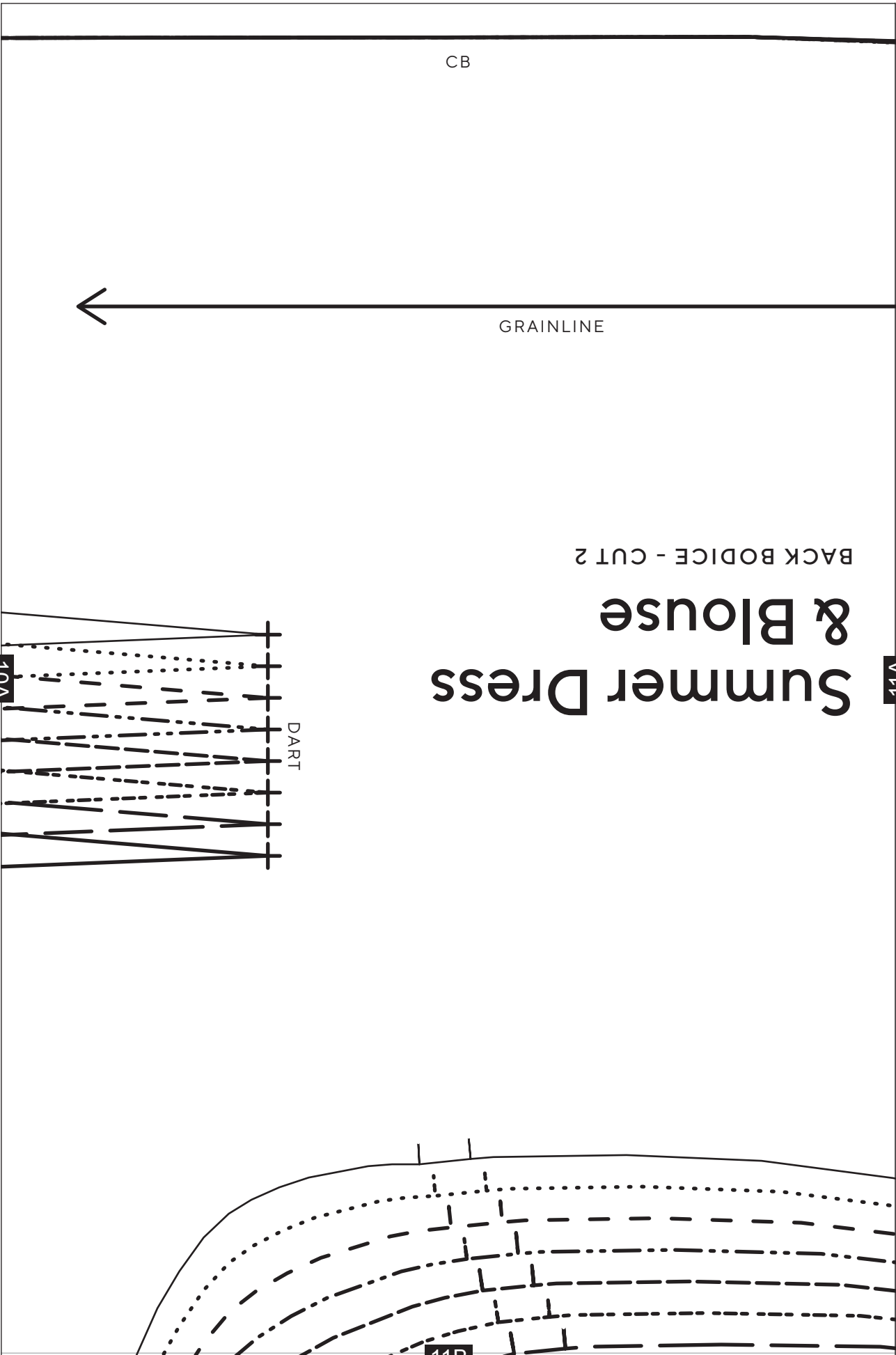
Summer Dress & Blouse

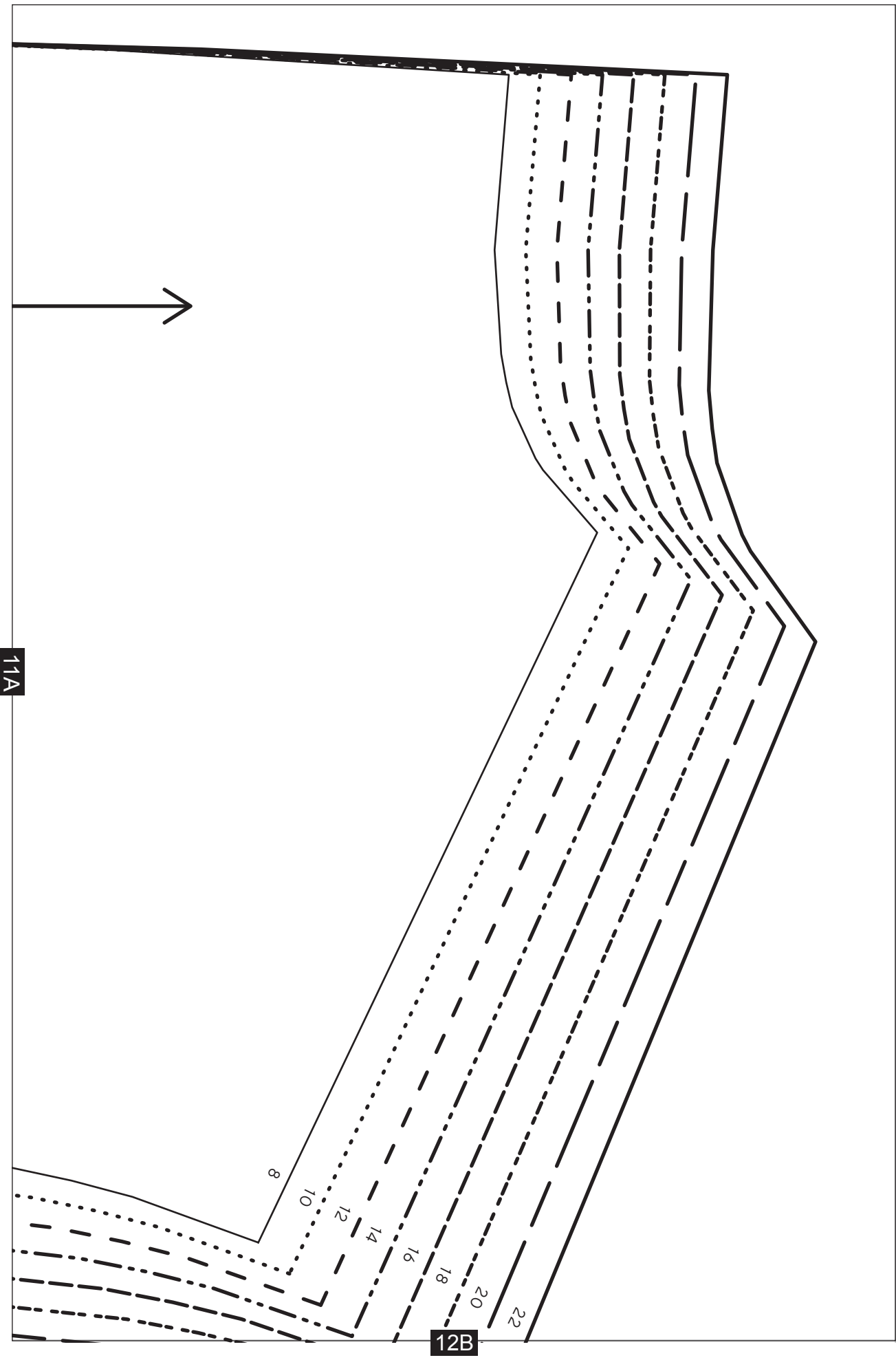
11A

10A

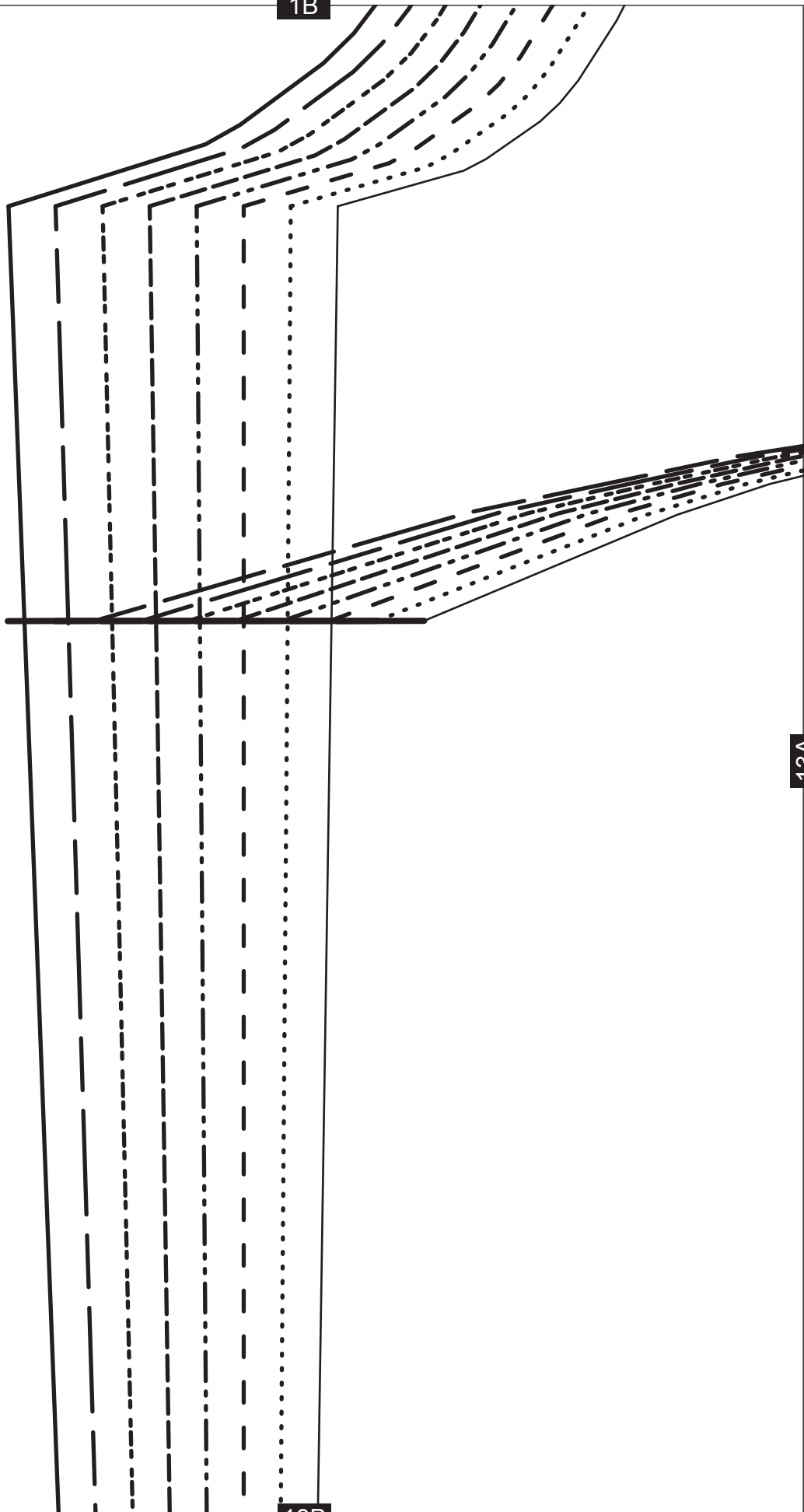
DART

11B





1B



13A

13B

2B

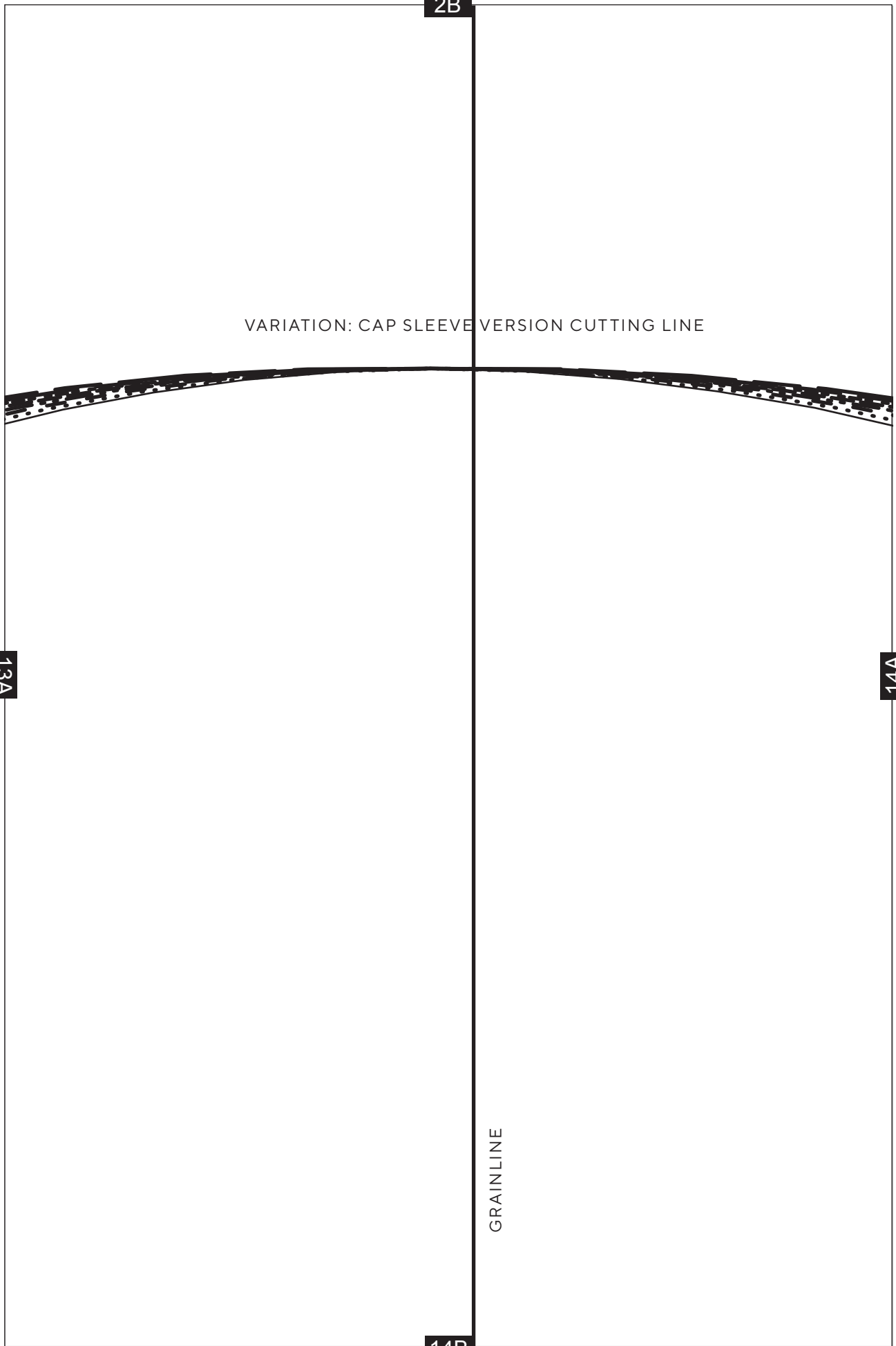
VARIATION: CAP SLEEVE VERSION CUTTING LINE

13A

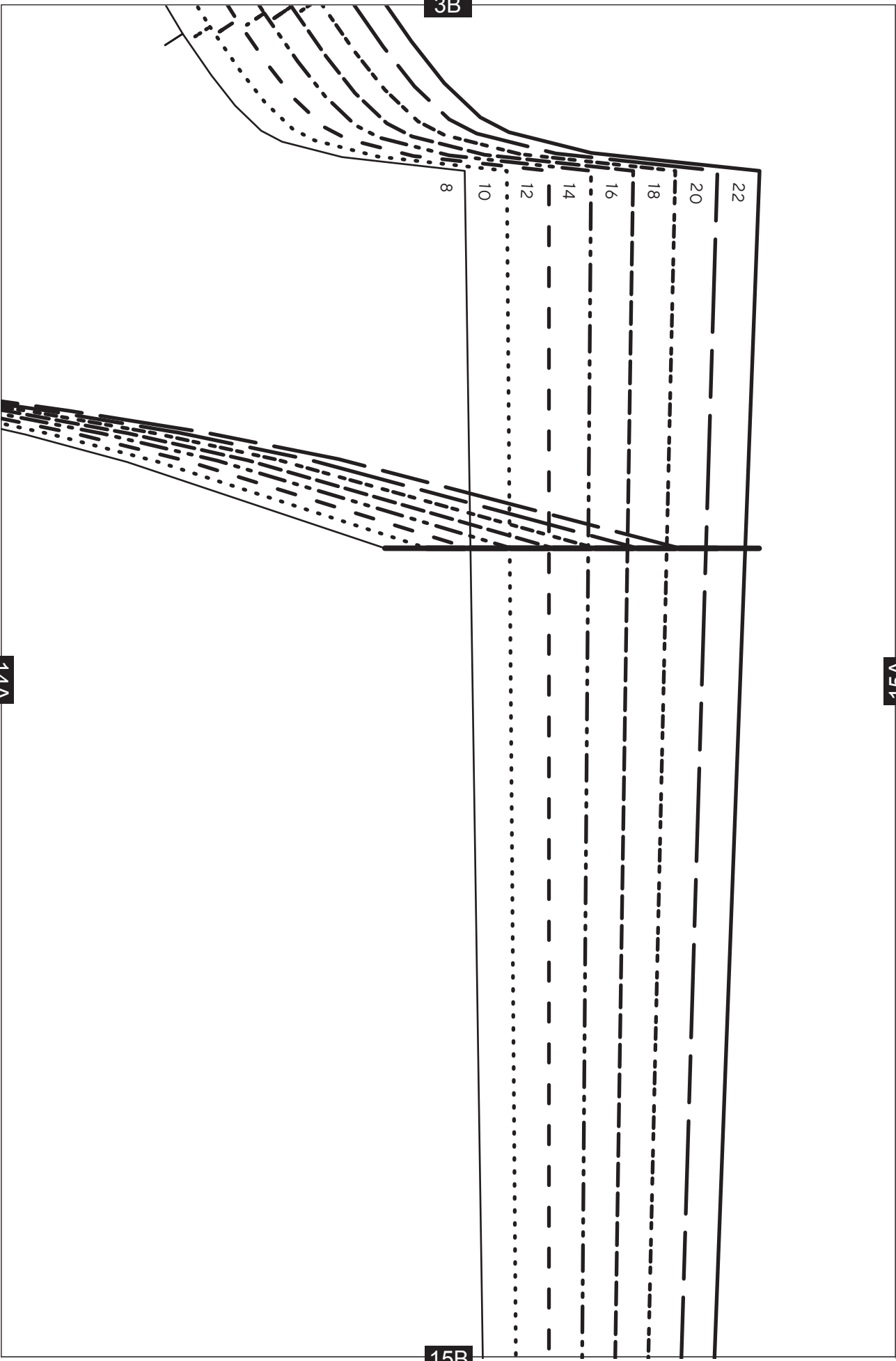
14A

GRAINLINE

14B



3B



14A

15A

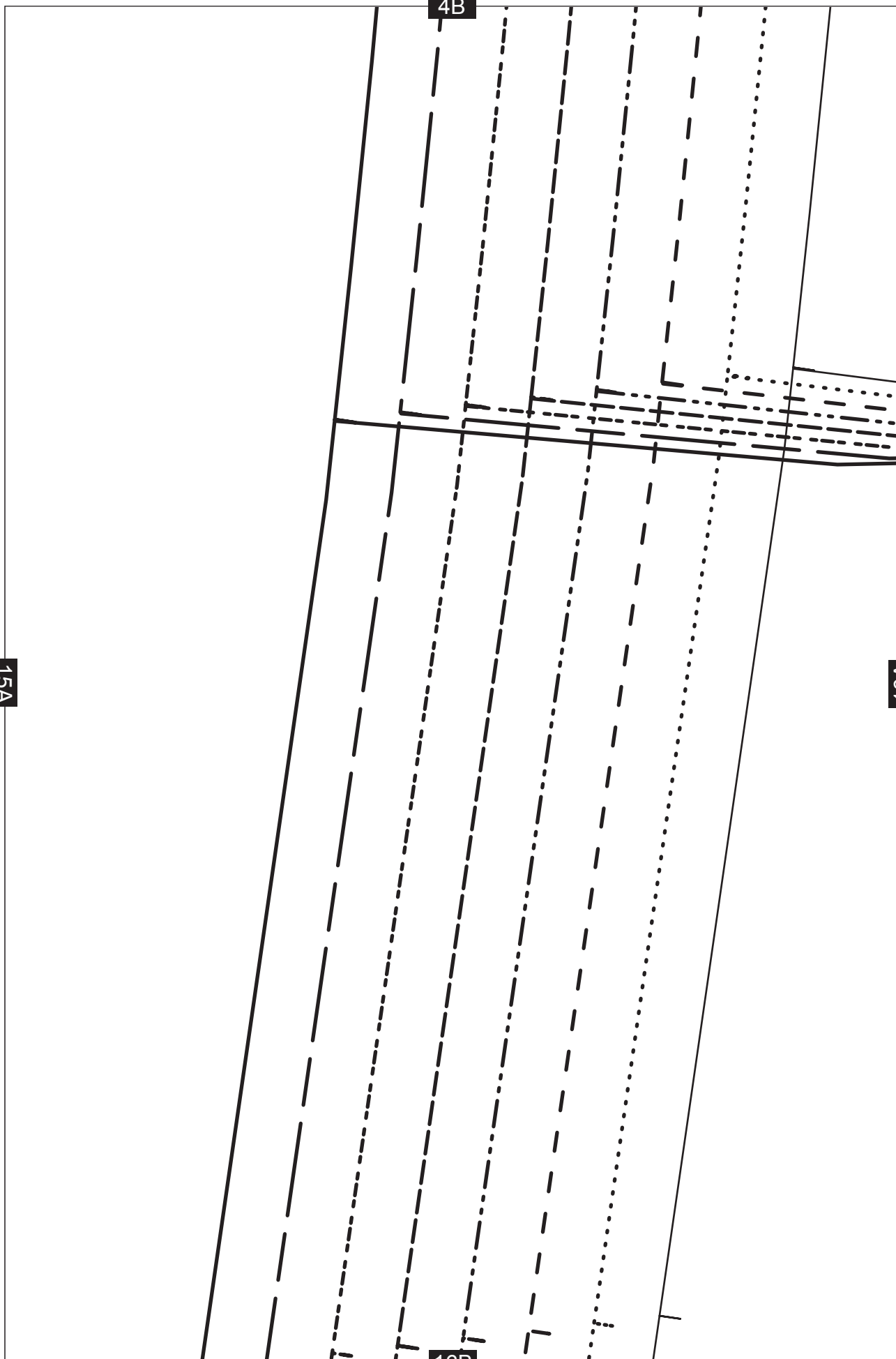
15B

15A

4B

16A

16B



5B

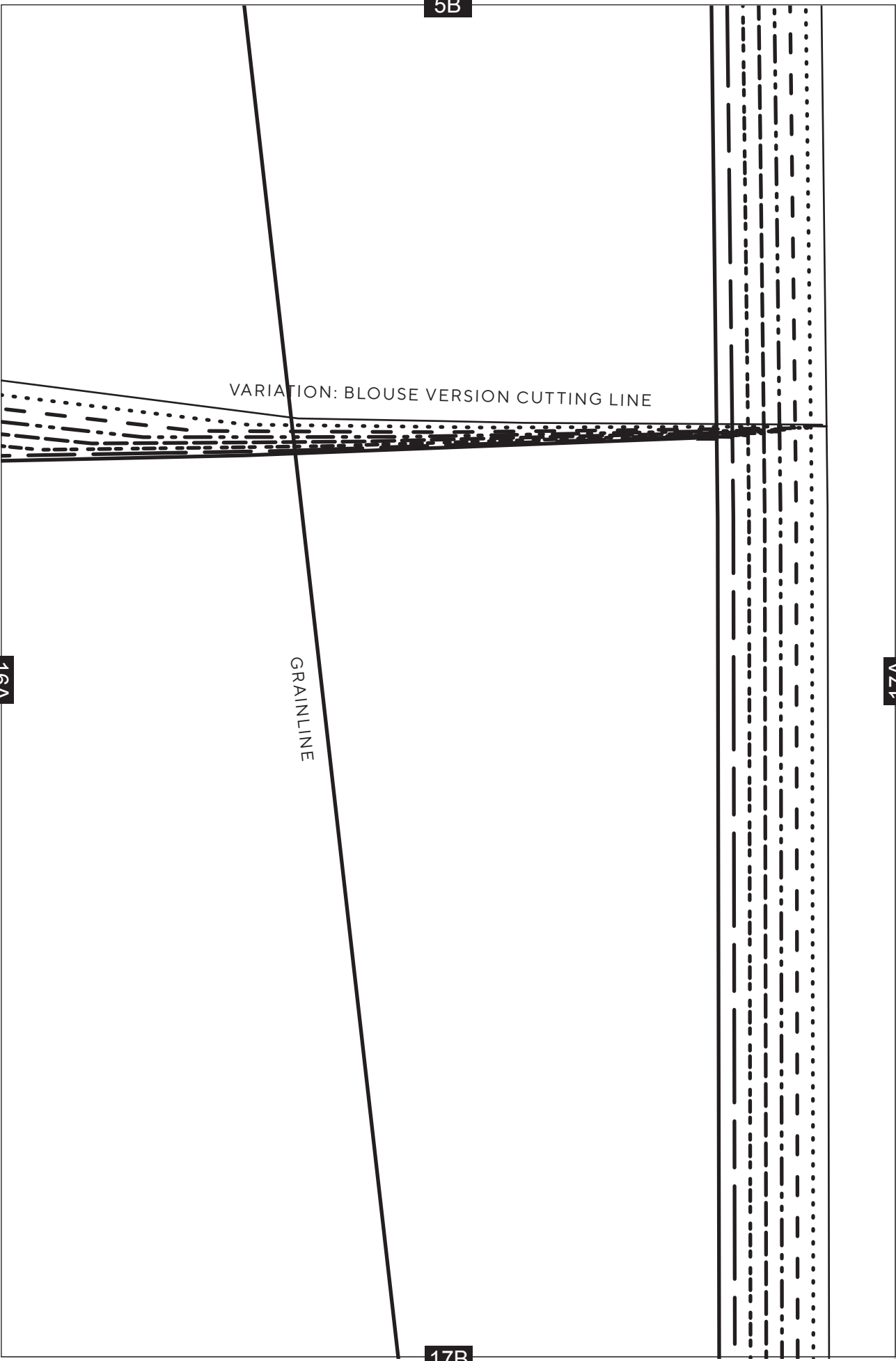
VARIATION: BLOUSE VERSION CUTTING LINE

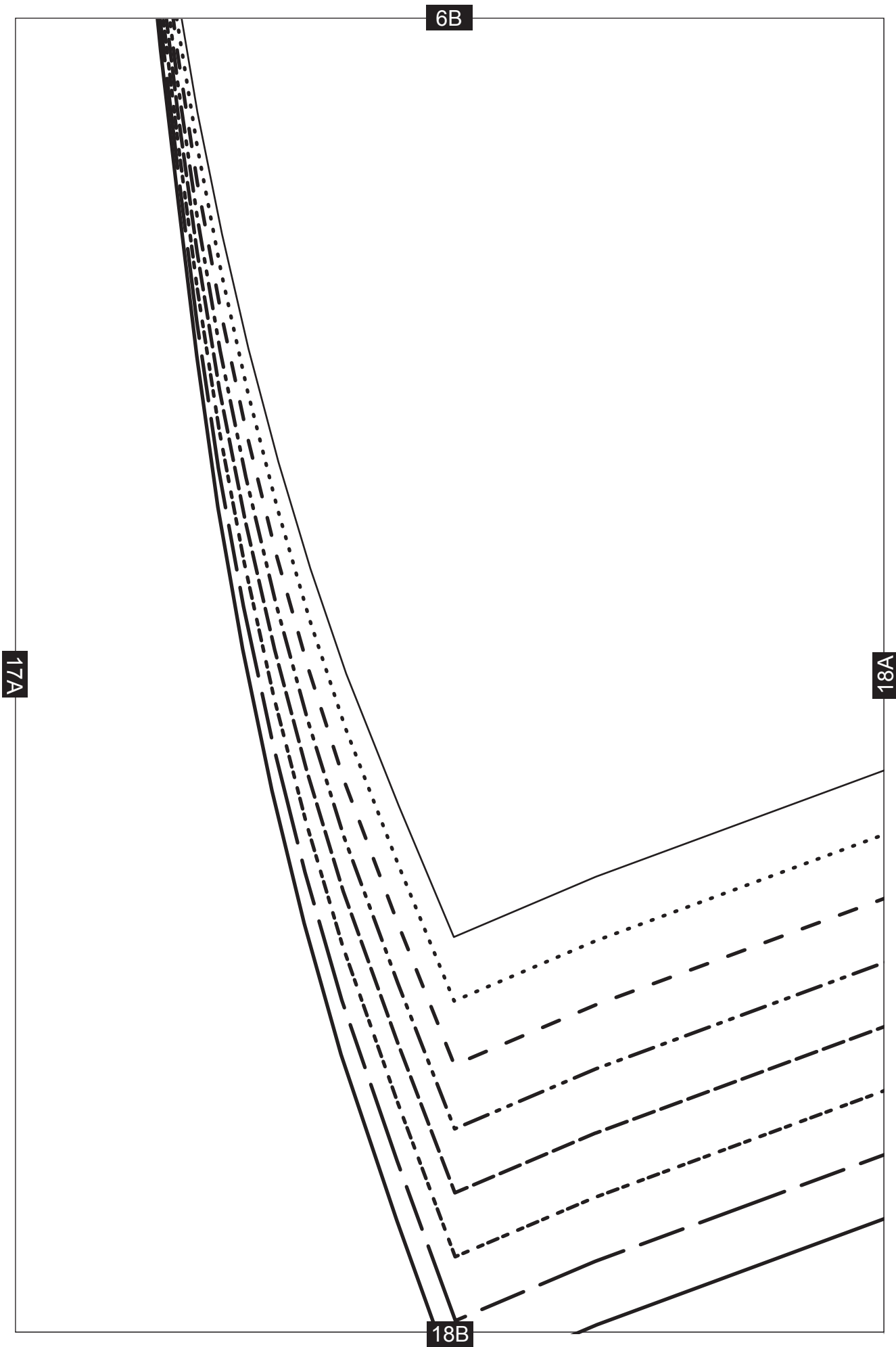
GRAINLINE

16A

17A

17B





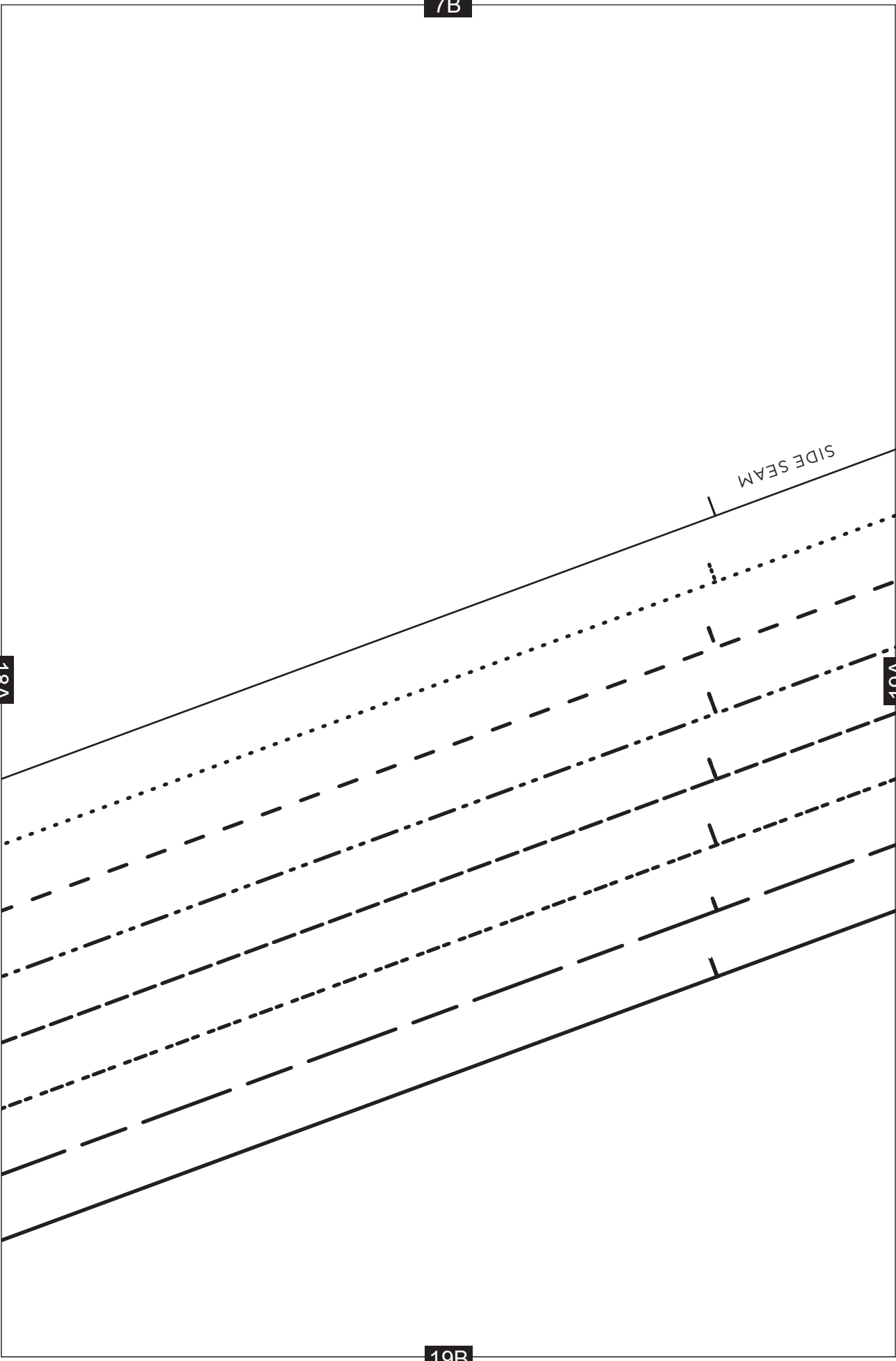
7B

18A

19A

SIDE SEAM

19B

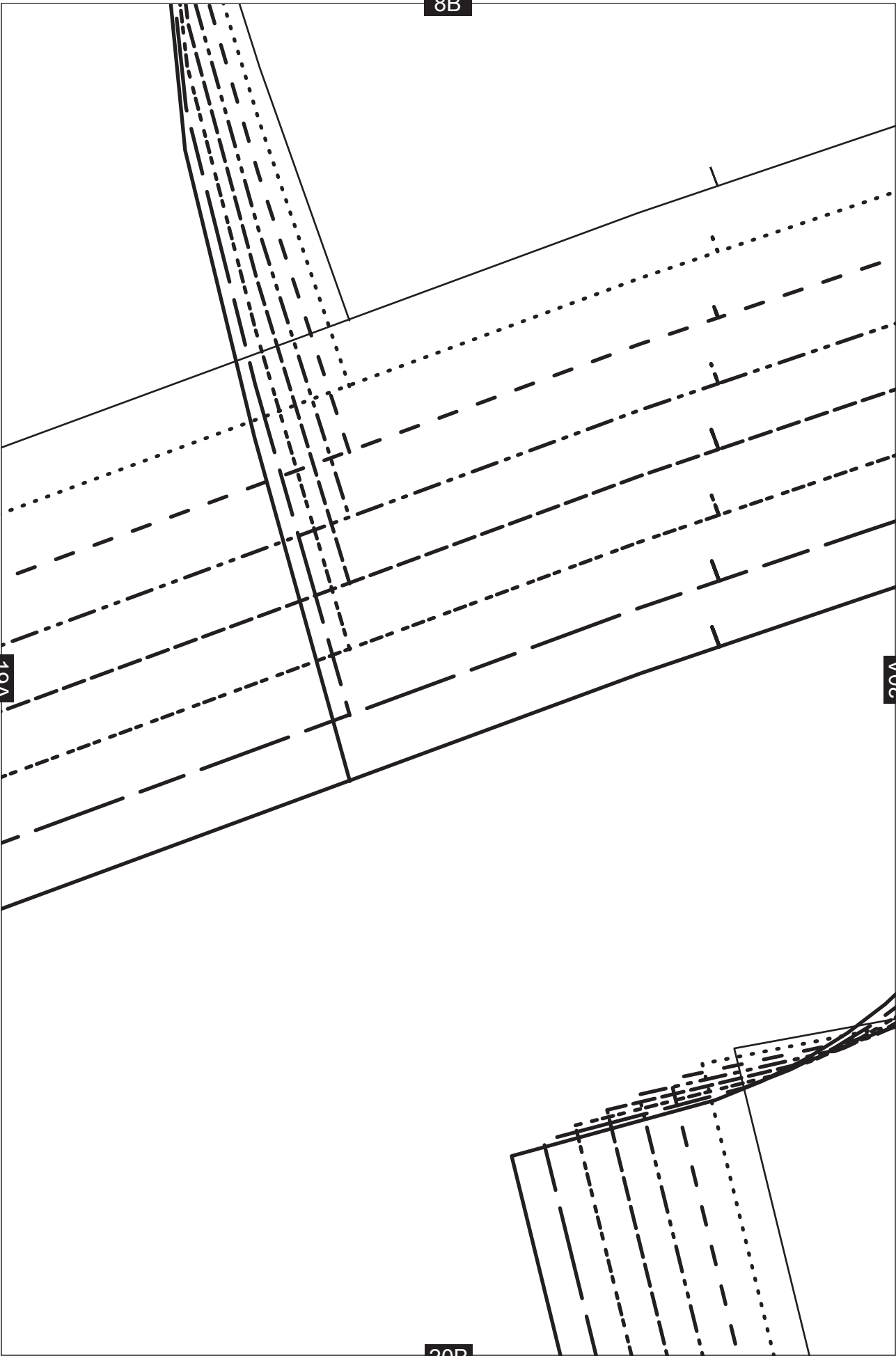


8B

19A

20A

20B



9B

20A

21A

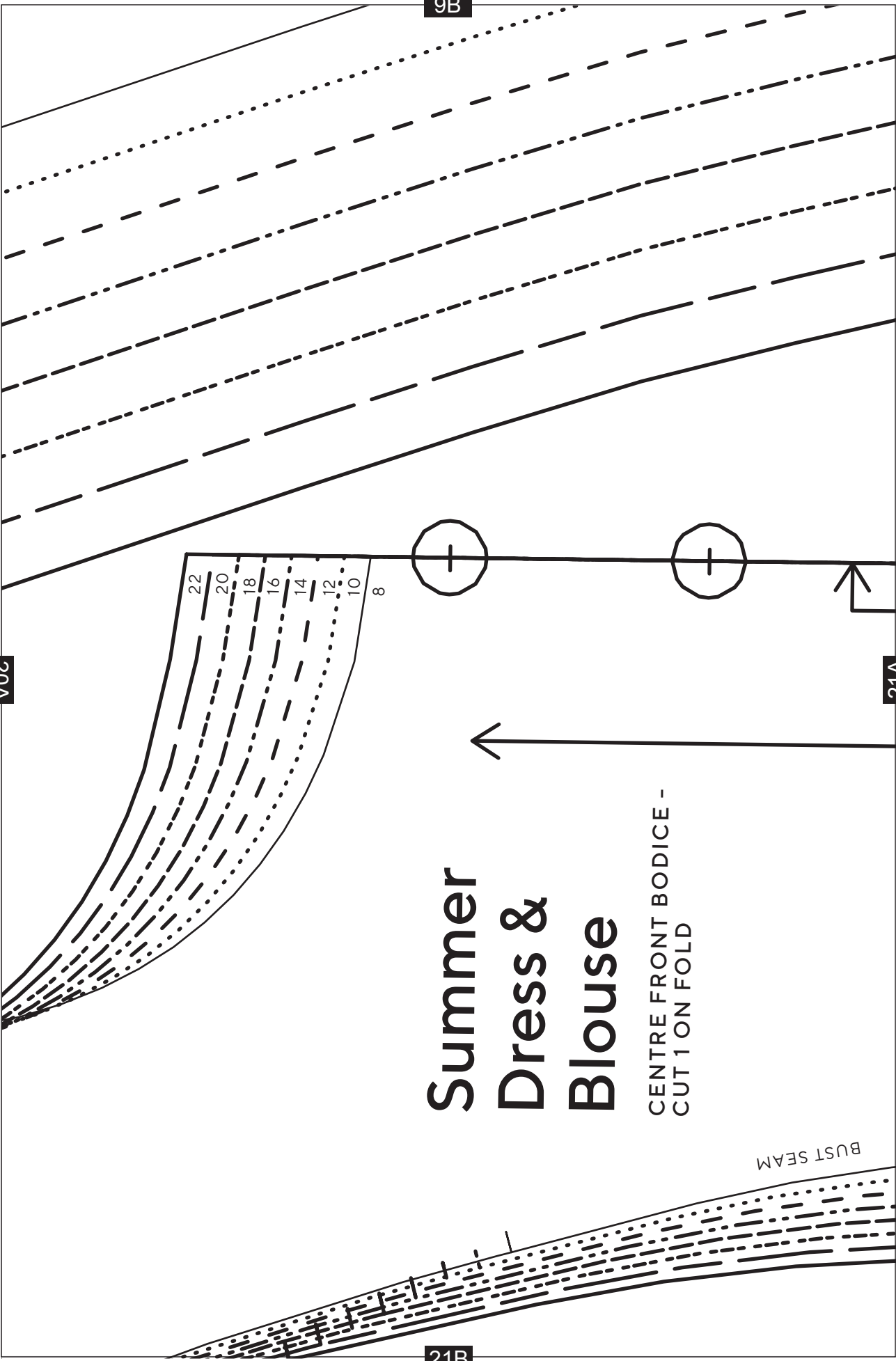
Summer Dress & Blouse

CENTRE FRONT BODICE -
CUT 1 ON FOLD

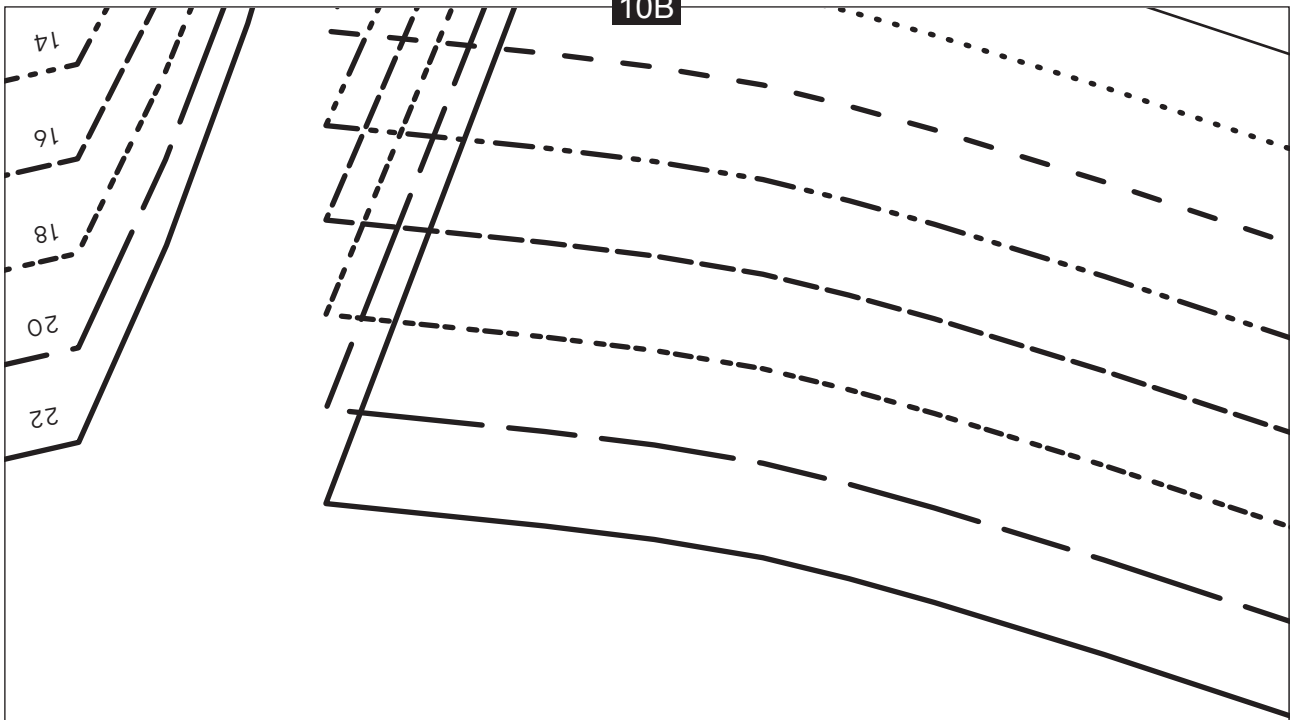
22
20
18
16
14
12
10
8

BUST SEAM

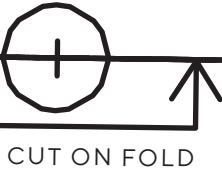
21B



10B



14
16
18
20
22



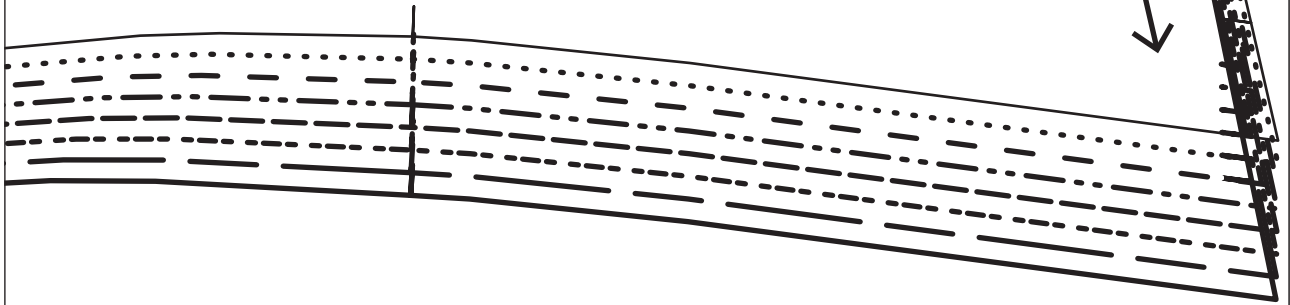
CF

21A

22A

GRAINLINE

GATHER TO 5CM



22B

23A

Summer Dress & Blouse

CUFF - CUT 2 IN MAIN FABRIC + CUT 2 IN INTERFACING
FOR LONG SLEEVE OPTION ONLY

FOLD

GRAINLINE

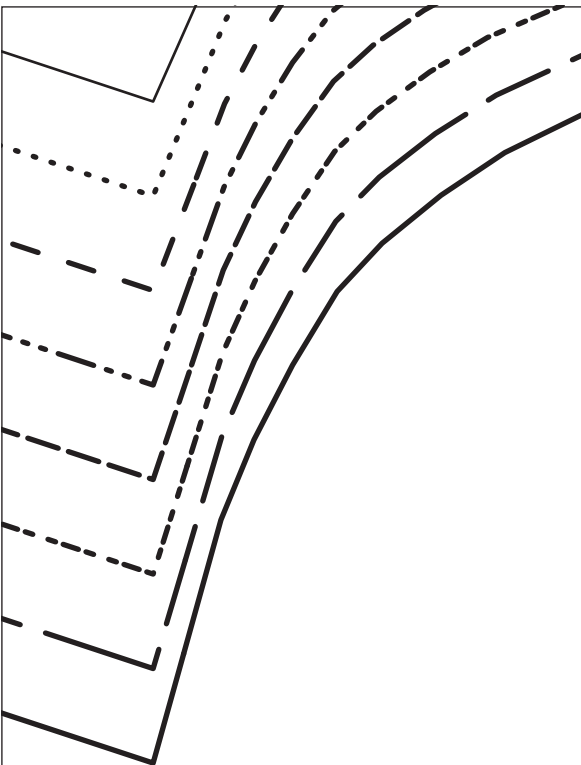
8

10

11B

23B

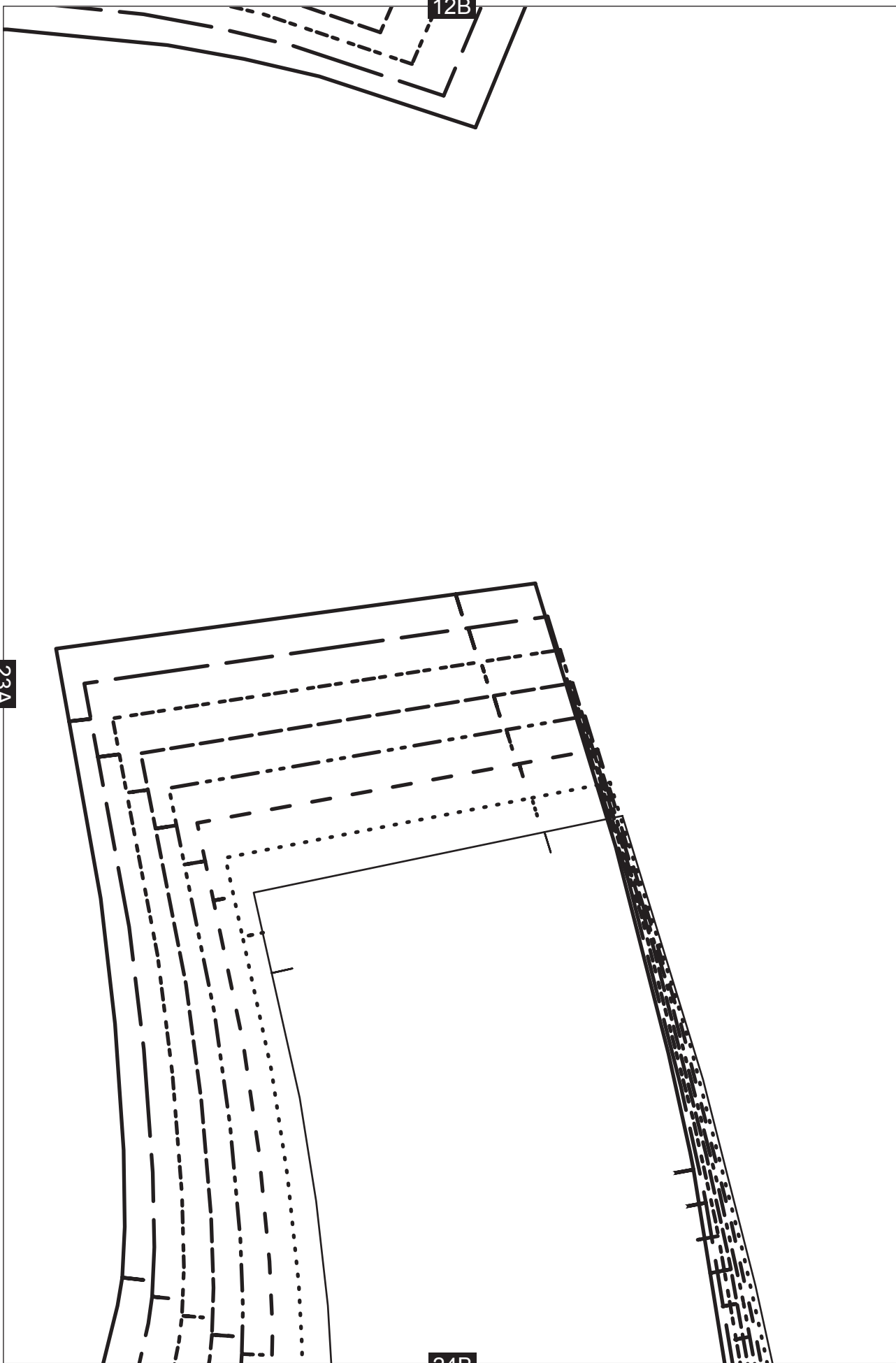
22A



12B

23A

24B



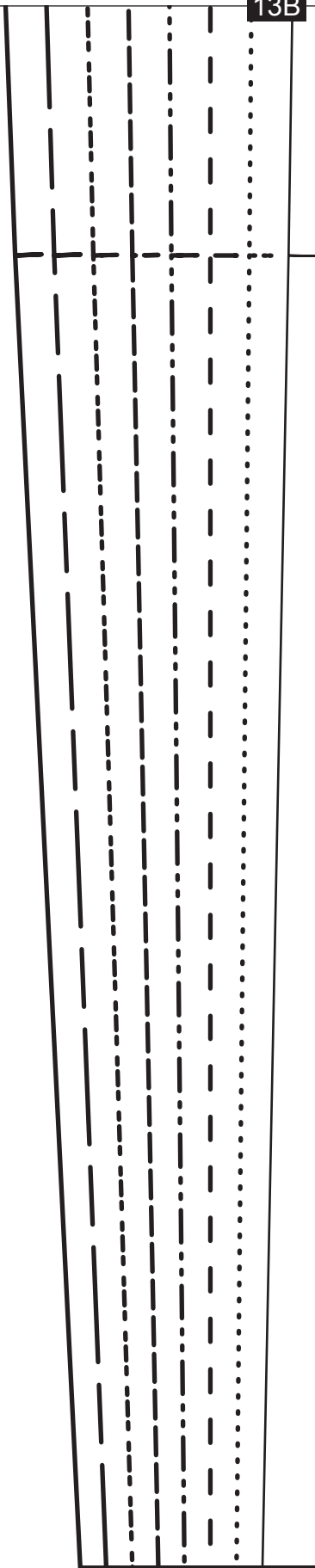
13B

Summer Dress & Blouse

SLEEVE - CUT 2



25A



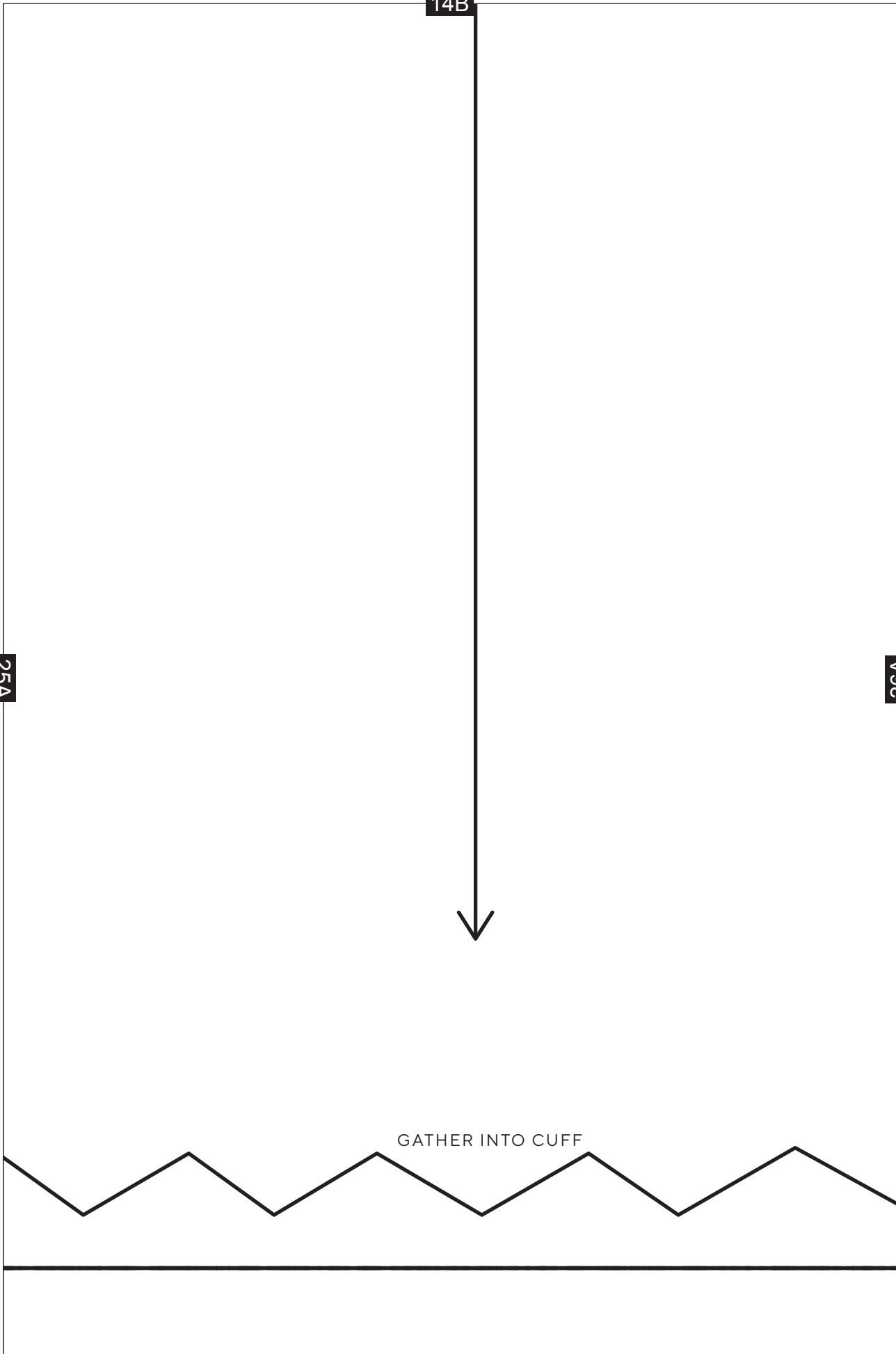
14B

25A

26A



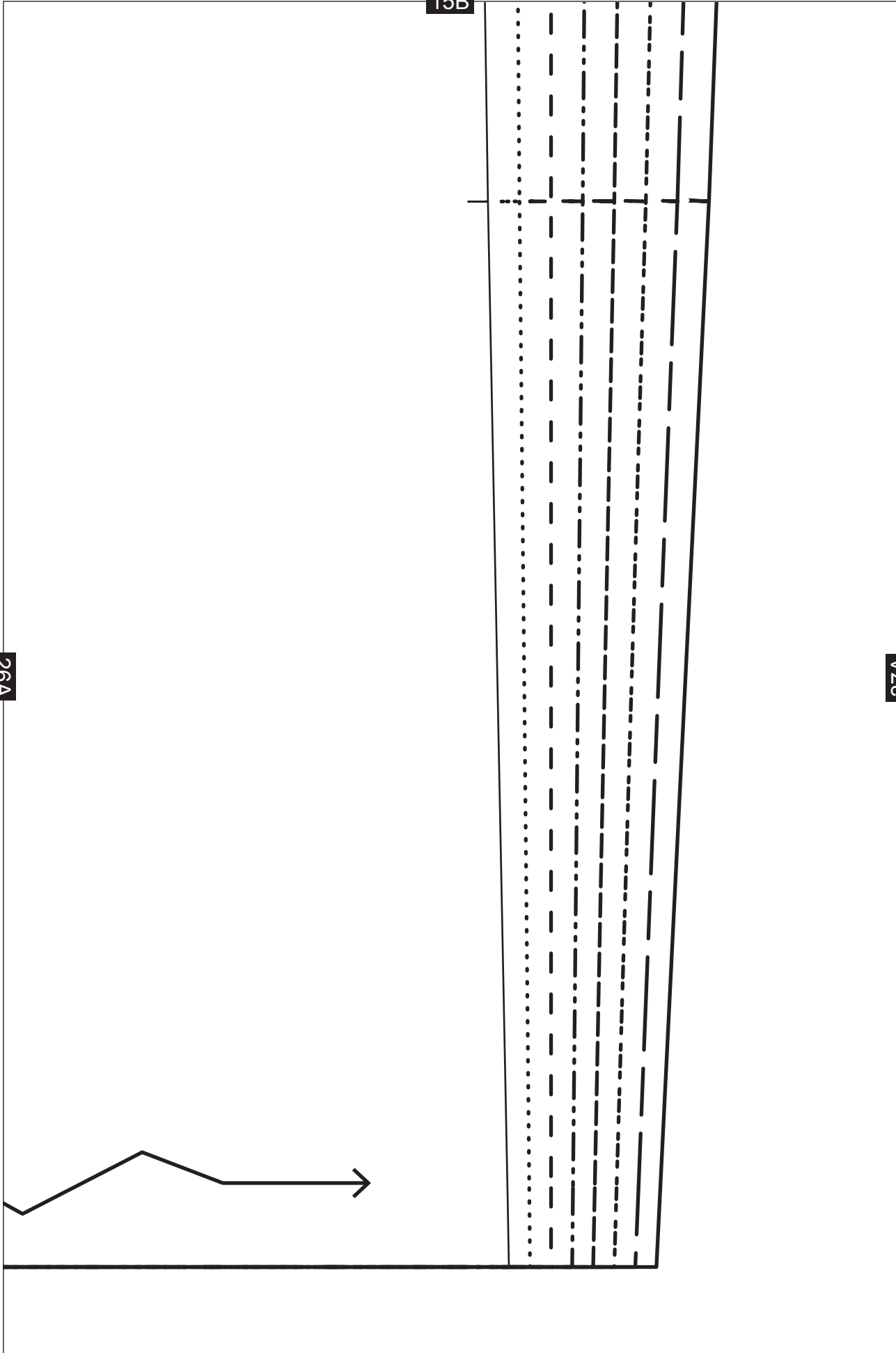
GATHER INTO CUFF



26A

15B

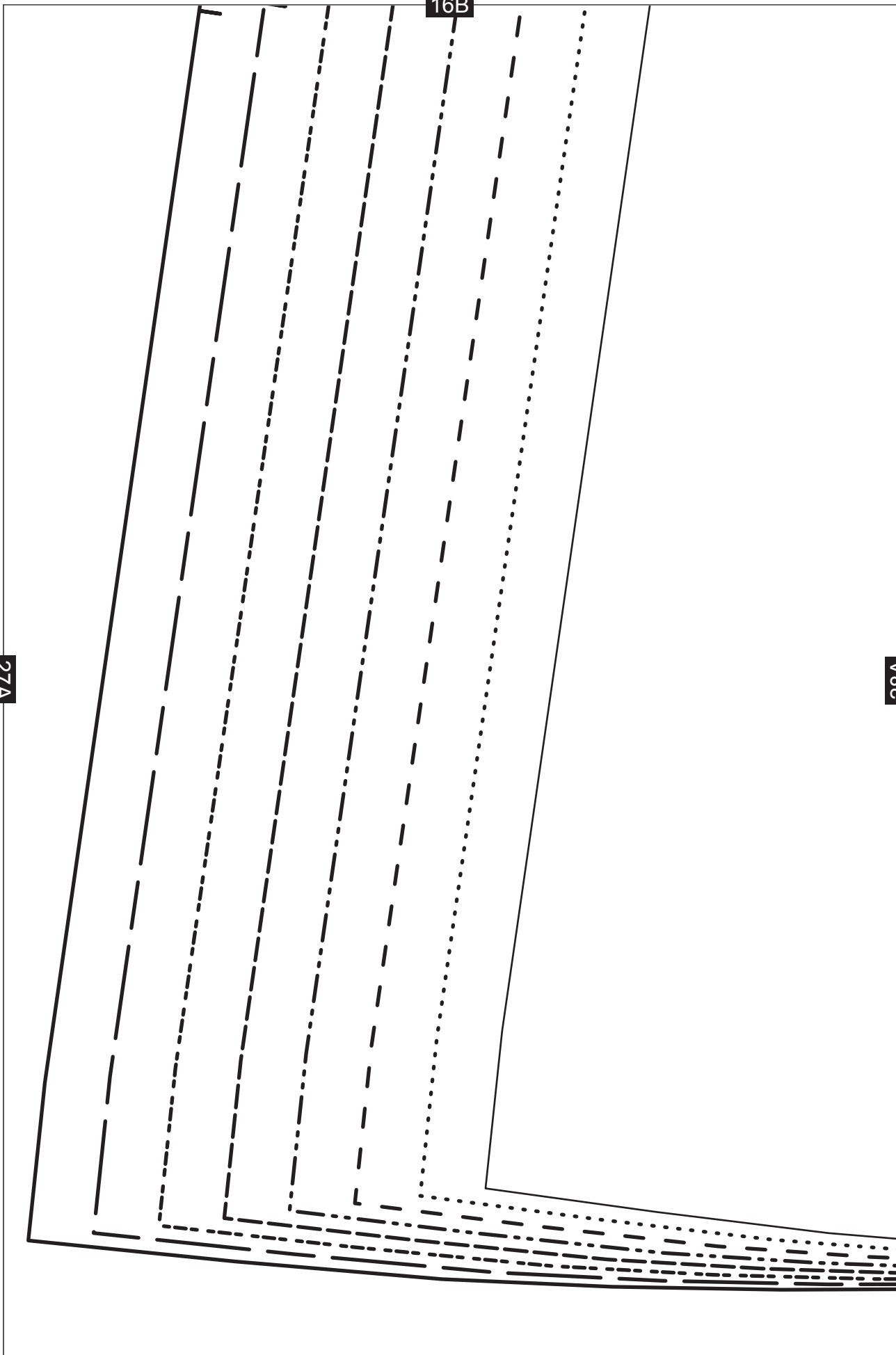
27A



27A

16B

28A



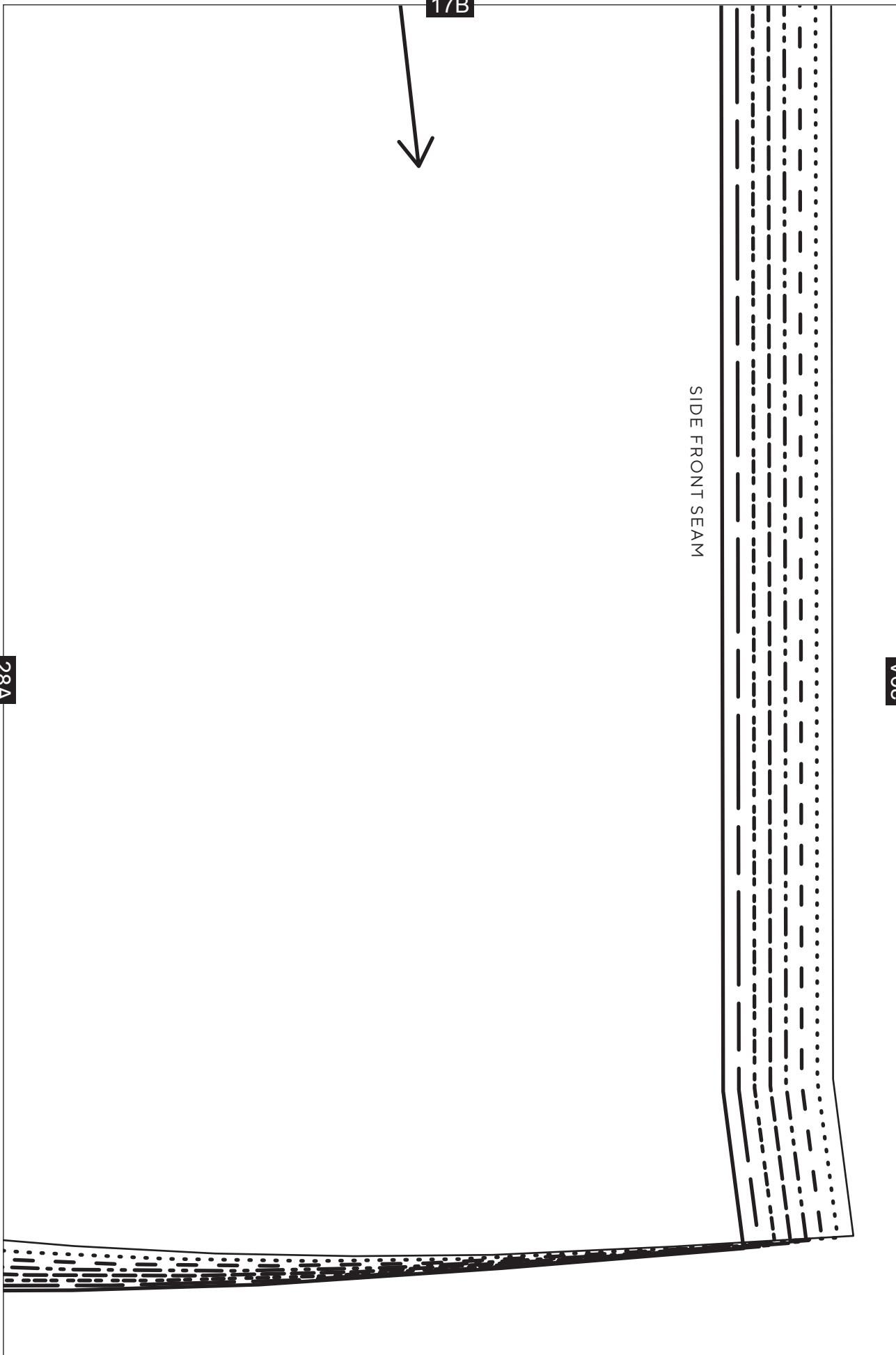
17B



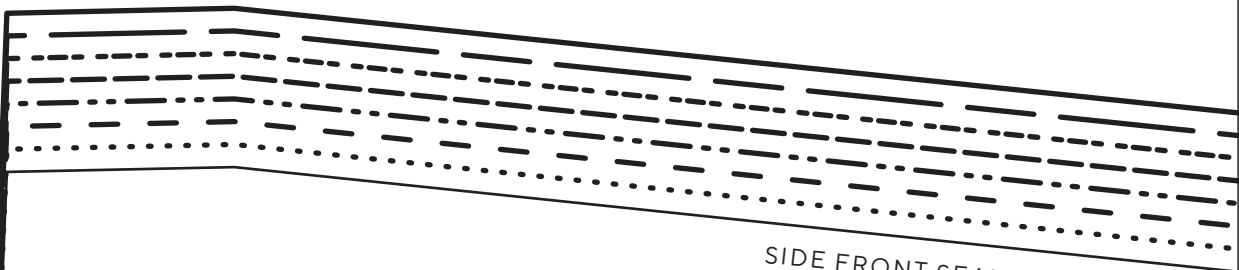
SIDE FRONT SEAM

29A

28A



18B

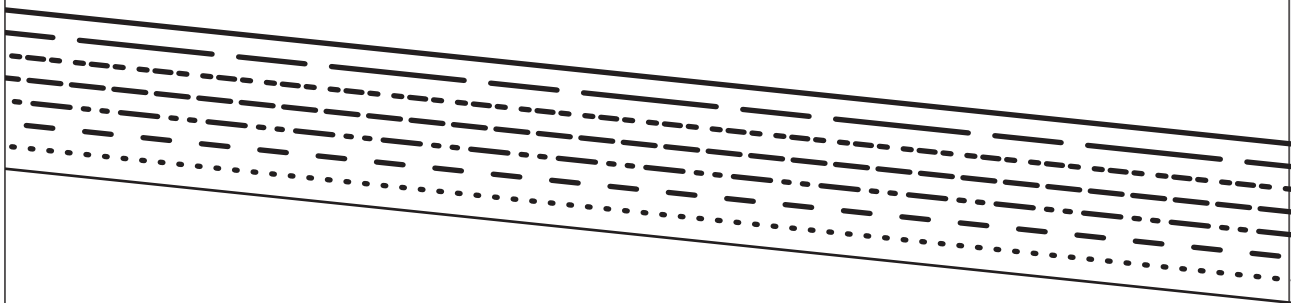


SIDE FRONT SEAM

29A

30A

19B



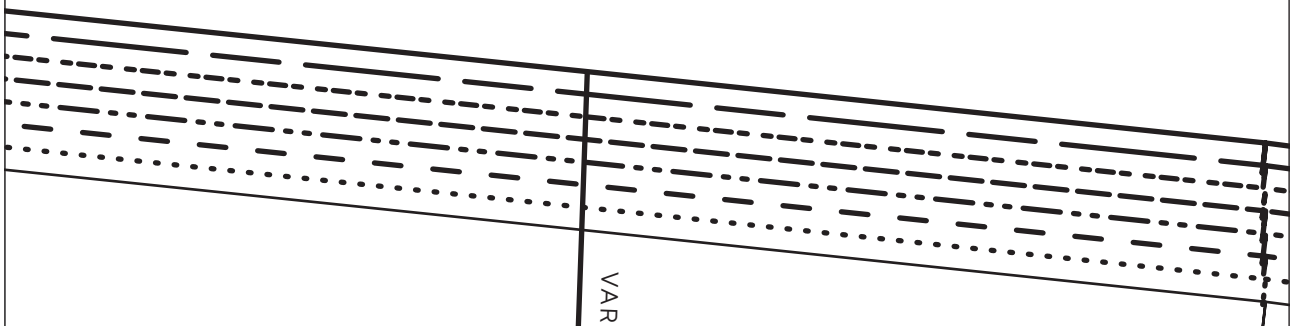
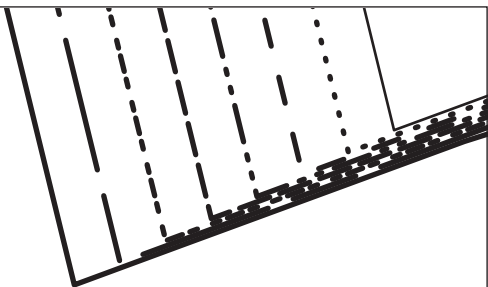
30A

31A

GRAINLINE



20B



31A

32A

VARIATION: BLOUSE VERSION CUTTING LINE



21B

33A

22
20
18
16
14
12
10
8

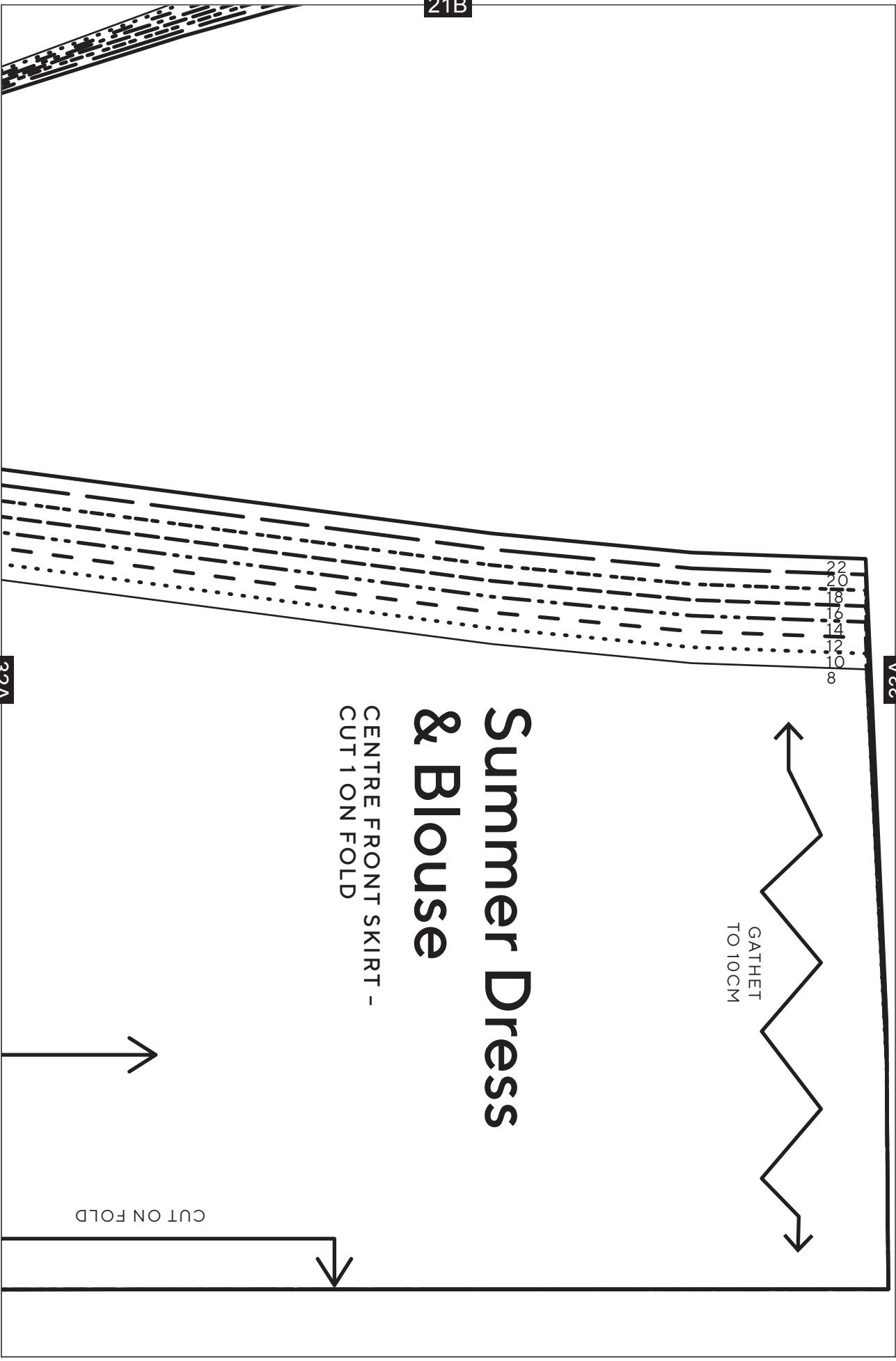
GATHER
TO 10CM

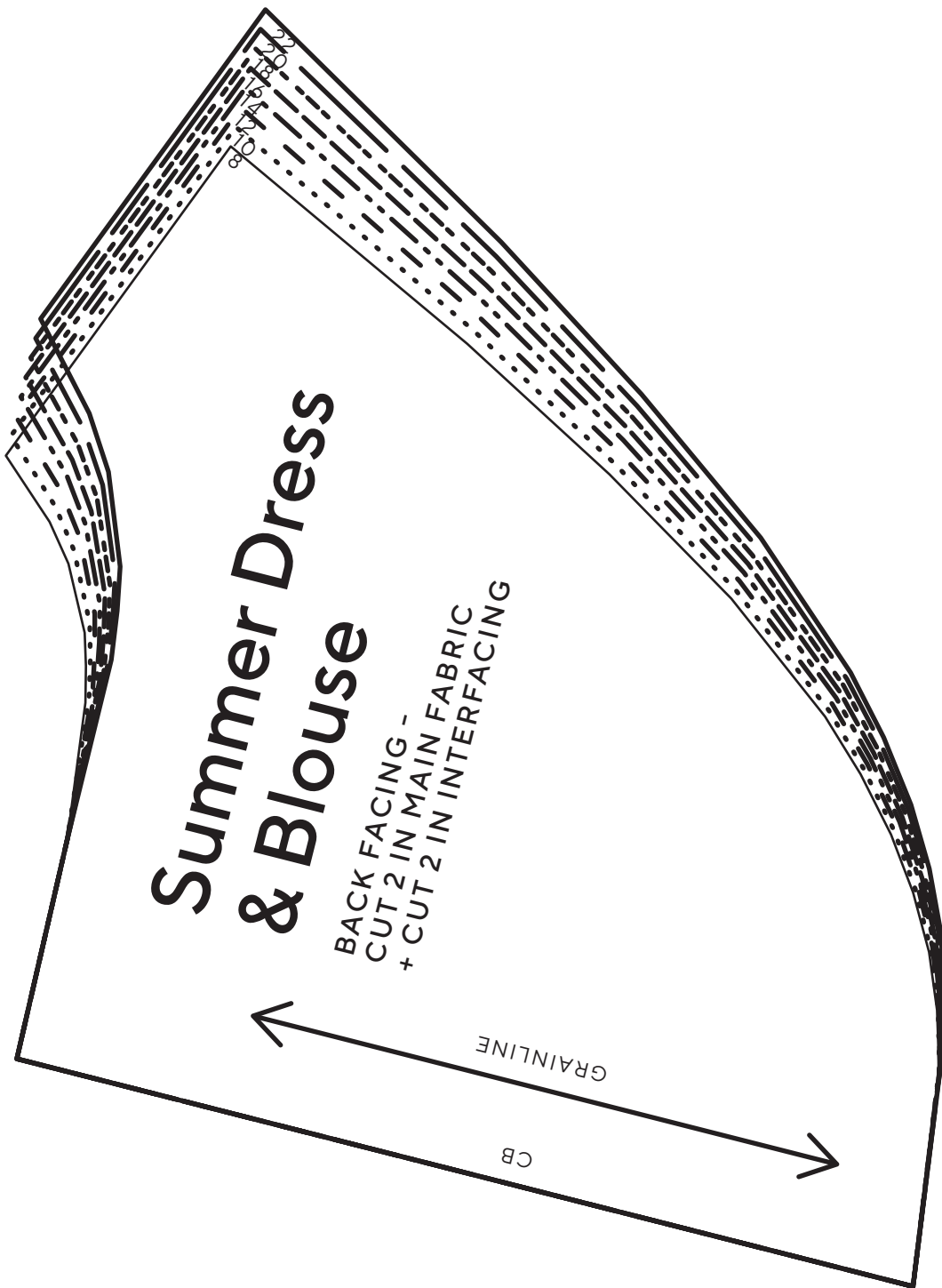
Summer Dress & Blouse

CENTRE FRONT SKIRT -
CUT 1 ON FOLD

CUT ON FOLD

32A





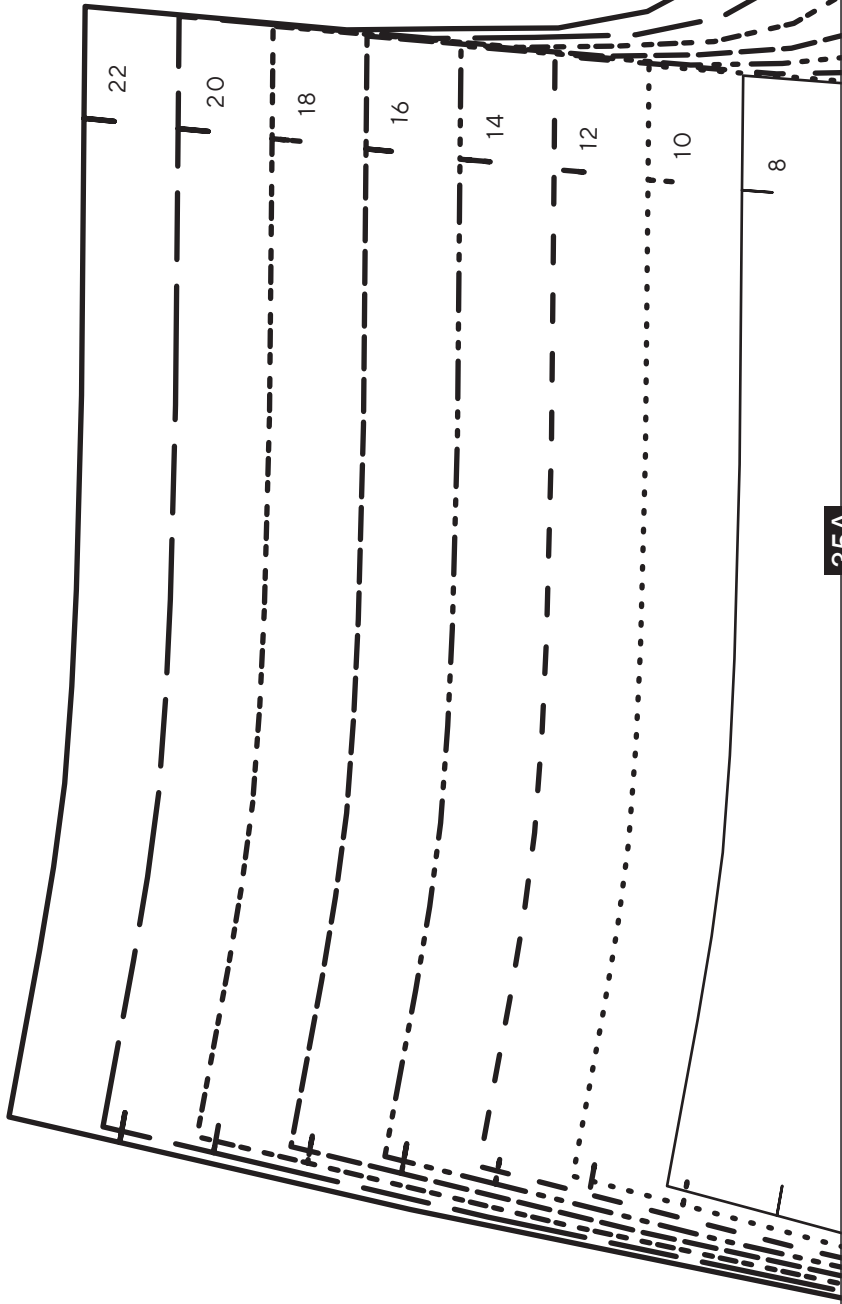
Summer Dress & Blouse

BACK FACING -
CUT 2 IN MAIN FABRIC
+ CUT 2 IN INTERFACING

GRAINLINE

CB

34A



35A

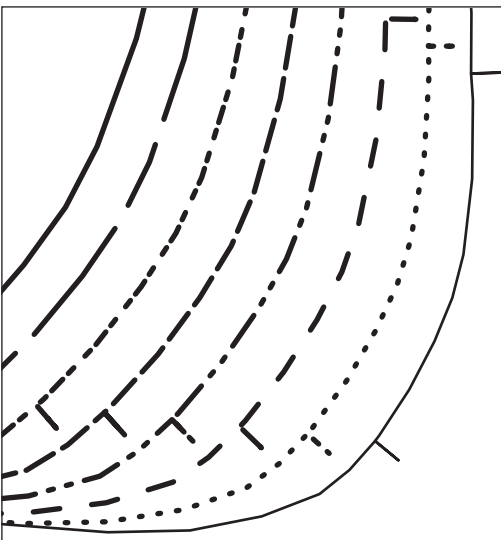
23B

12	
14	
16	
18	
20	
22	

35A

Summer Dress & Blouse

SIDE BODICE - CUT 2



24B



BUST SEAM

