



**Long-sleeved and Sleeveless Shell Top (1 of 2)**  
PROJECT DESIGN © LOVE PRODUCTIONS 2022  
THIS DESIGN IS PROTECTED BY COPYRIGHT  
AND MUST NOT BE MADE FOR RESALE.

DESIGN BY STYLING BY LUCY HODGSON @LUCYHODGSON

1.5 CM (5/8 IN.) SEAM ALLOWANCE INCLUDED (UNLESS OTHERWISE STATED)

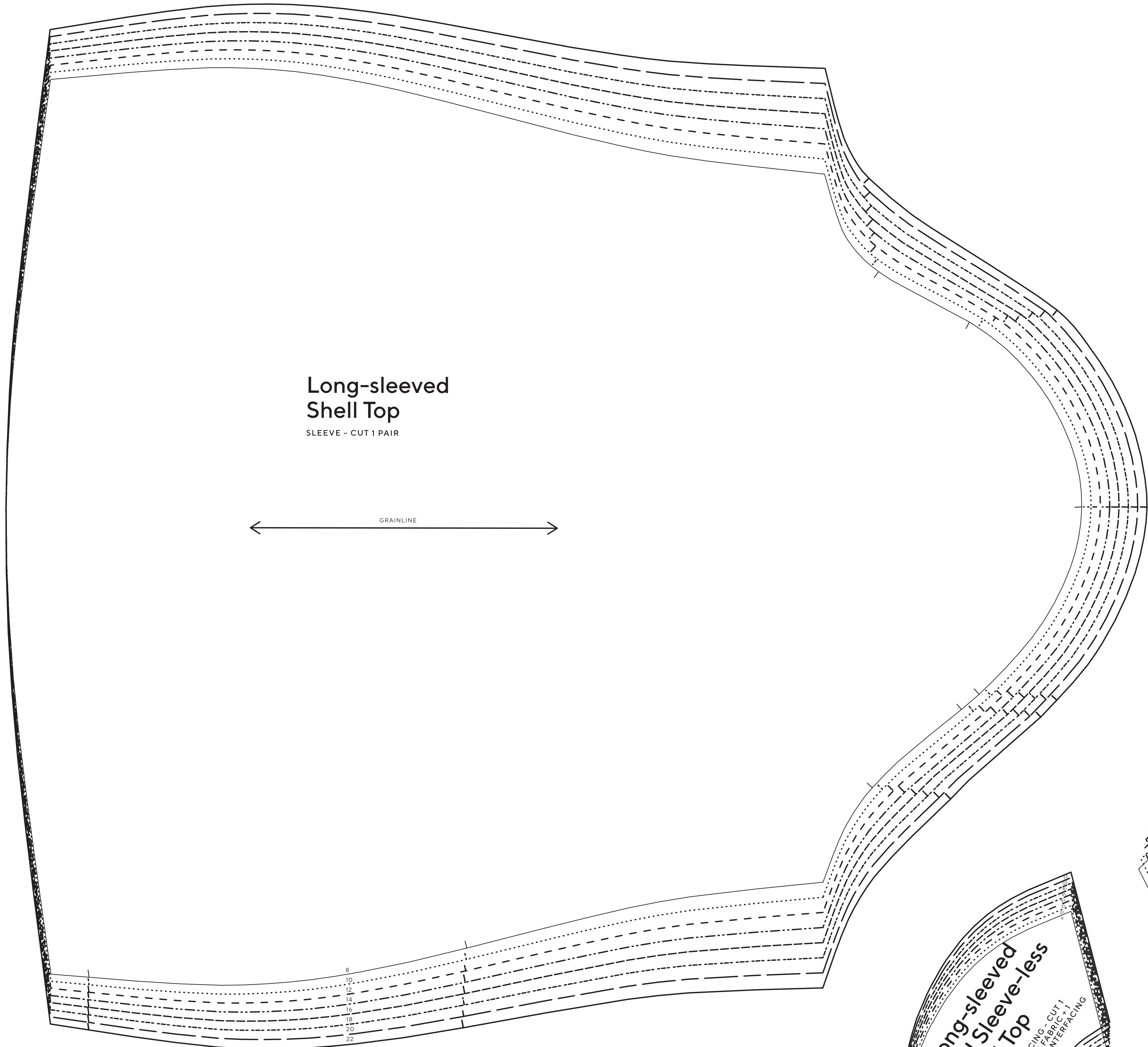
**SIZING KEY**

—	8
.....	10
----	12
----	14
----	16
----	18
----	20
----	22

**Long-sleeved Shell Top**

SLEEVE - CUT 1 PAIR

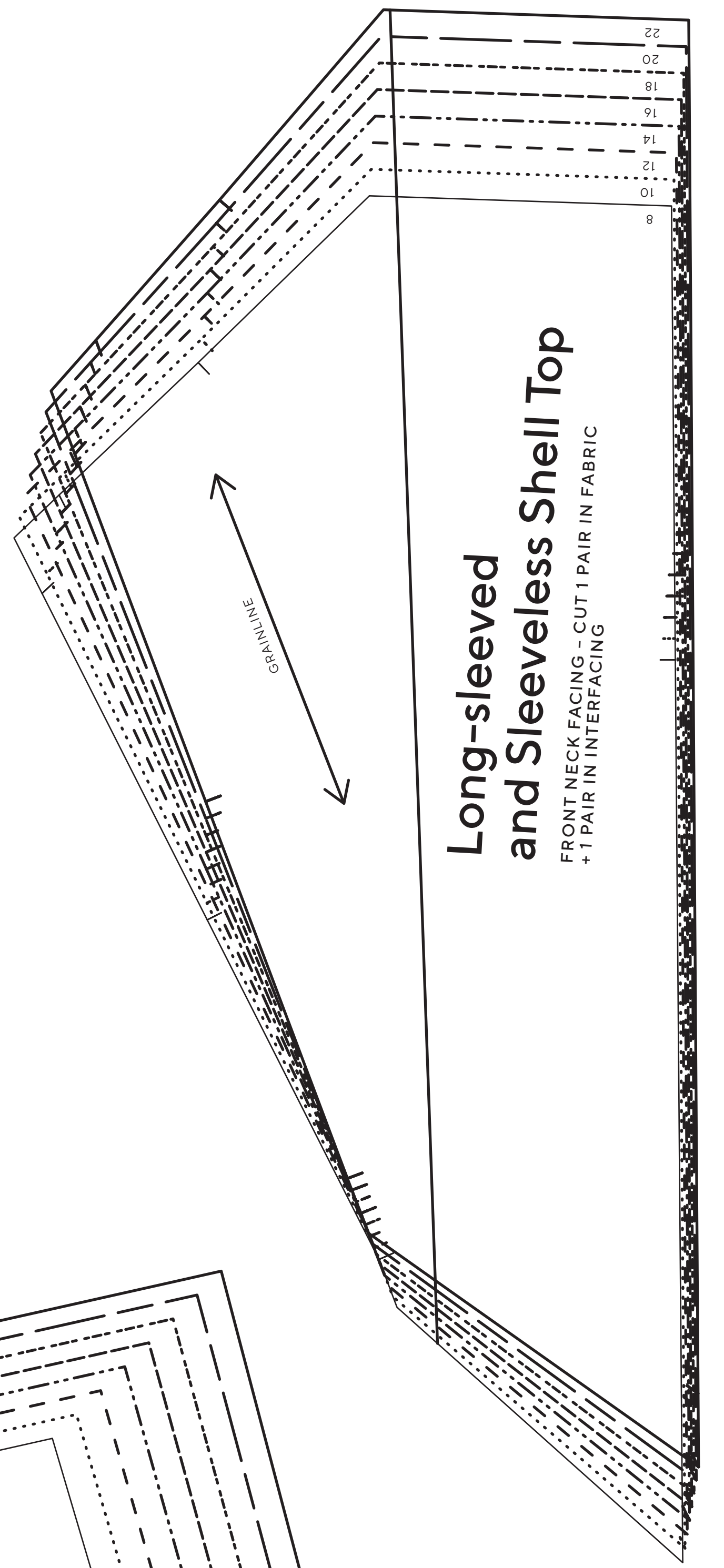
← GRAINLINE →



**Long-sleeved and Sleeveless Shell Top**

FRONT NECK FACINGS - CUT 1 PAIR IN FABRIC  
+ 1 PAIR IN INTERFACING

SHIRTING

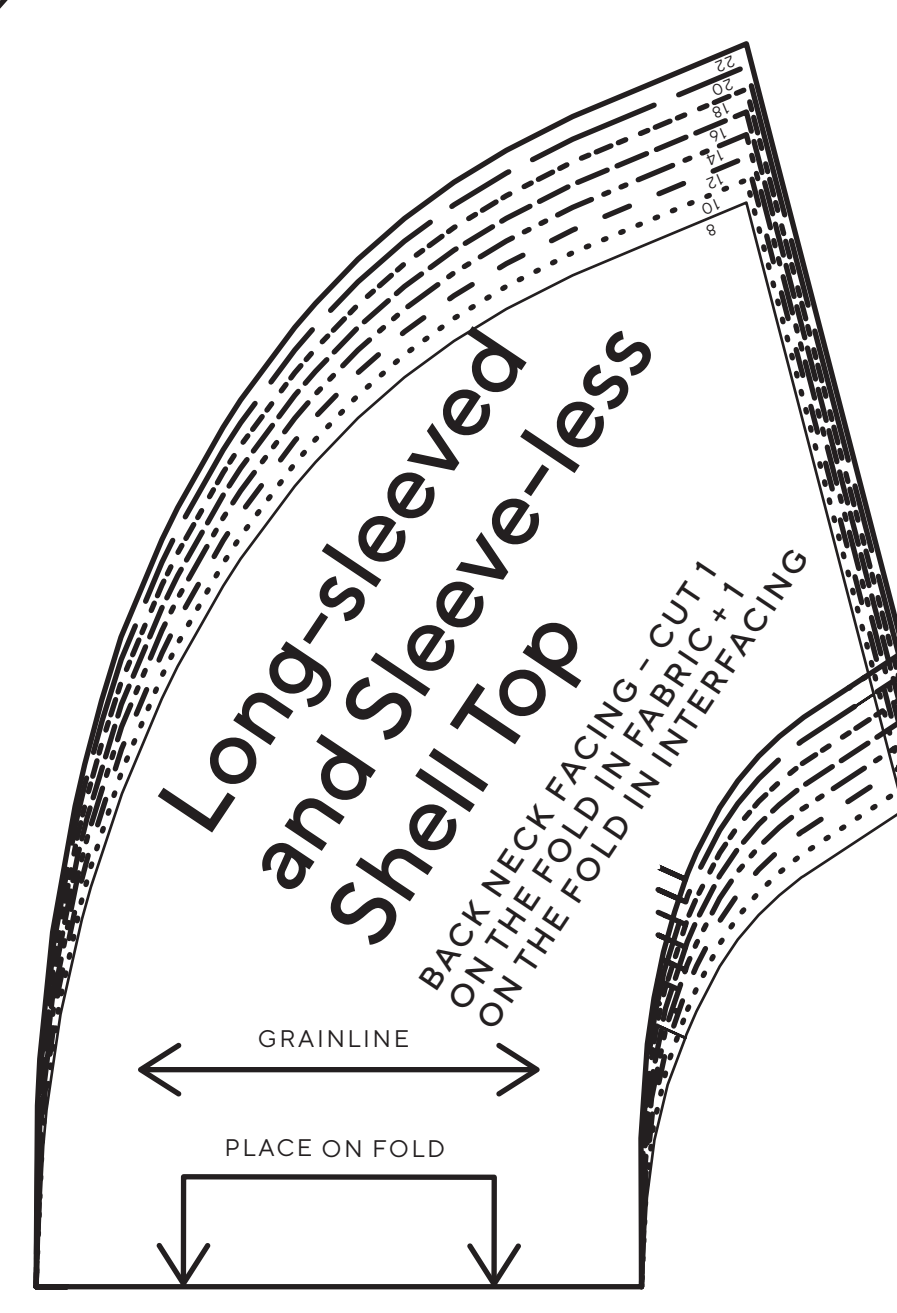


**Long-sleeved and Sleeve-less Shell Top**

BACK NECK FACINGS - CUT 1 ON THE FOLD IN FABRIC  
ON THE FOLD IN INTERFACING

← GRAINLINE →

PLACE ON FOLD



**Long-sleeved + Sleeveless Shell Top**

BACK - CUT 1 ON THE FOLD

← GRAINLINE →

PLACE ON FOLD

