

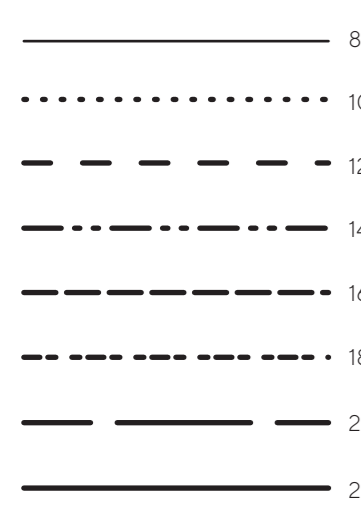


Women's Pyjamas (1 of 3)

PROJECT DESIGN © LOVE PRODUCTIONS 2022
THIS DESIGN IS PROTECTED BY COPYRIGHT
AND MUST NOT BE MADE FOR RESALE.

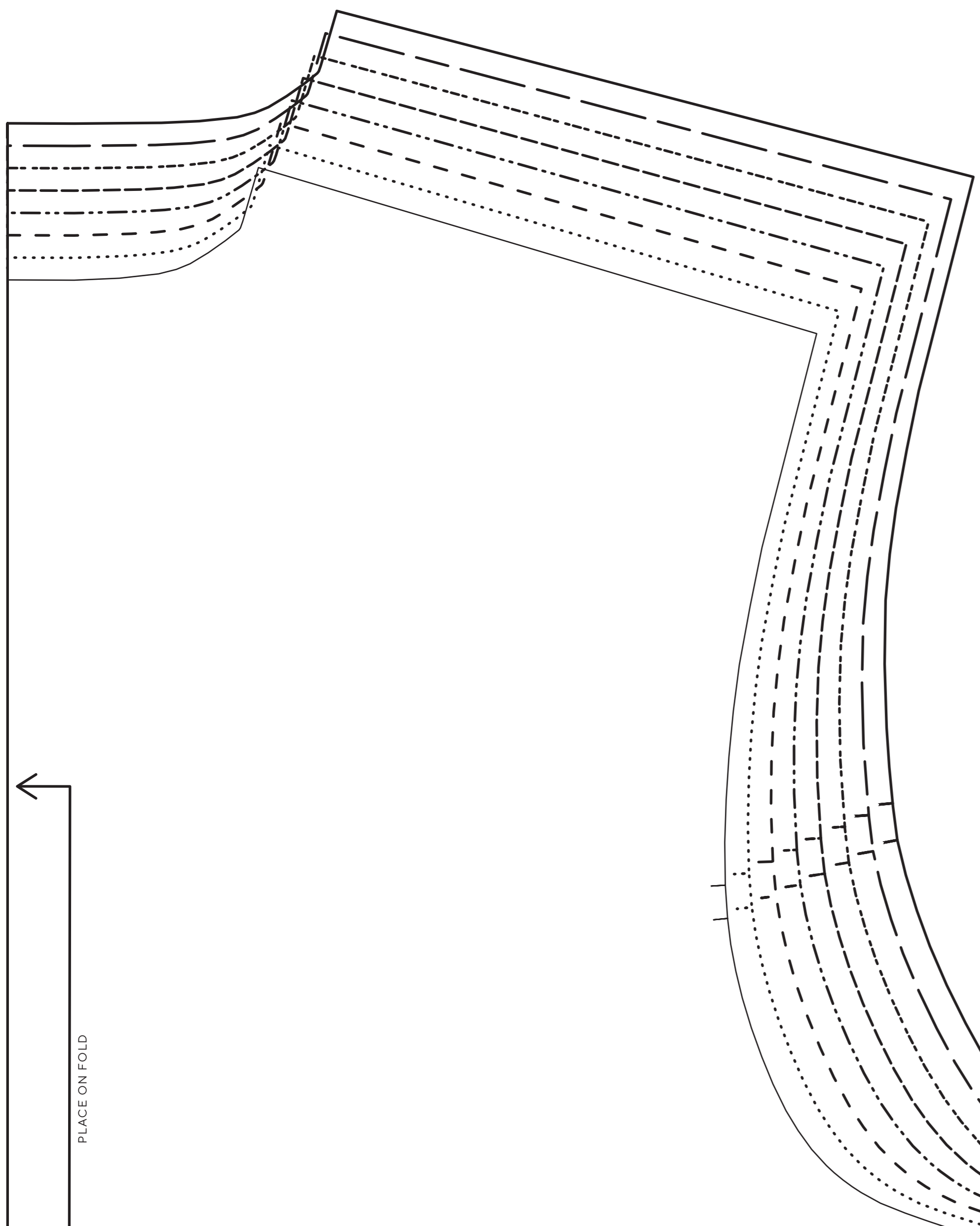
1/3 - CM (2 1/2 IN) SEAM ALLOWANCE INCLUDED (UNLESS OTHERWISE STATED)

SIZING KEY



Women's Pyjamas

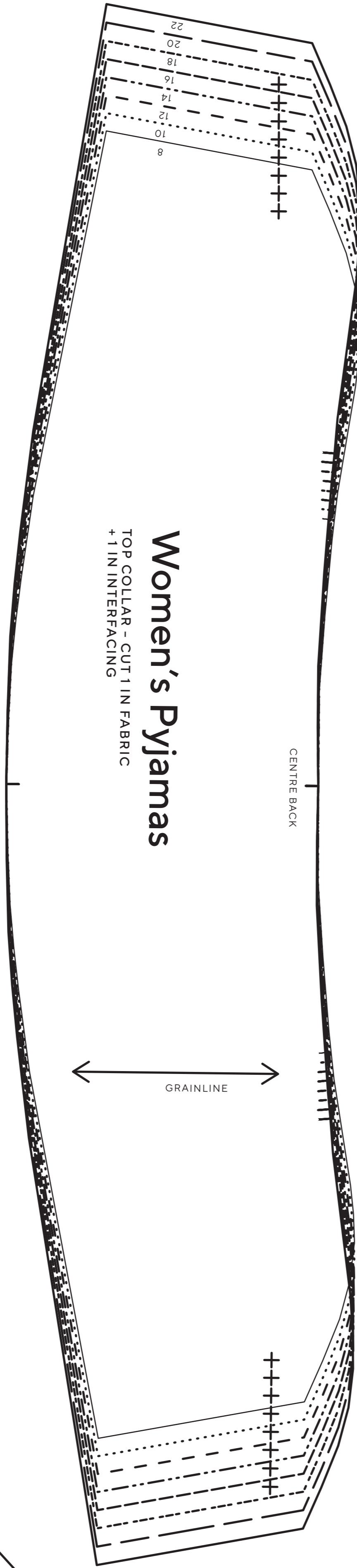
POCKET - CUT 1



Women's Pyjamas

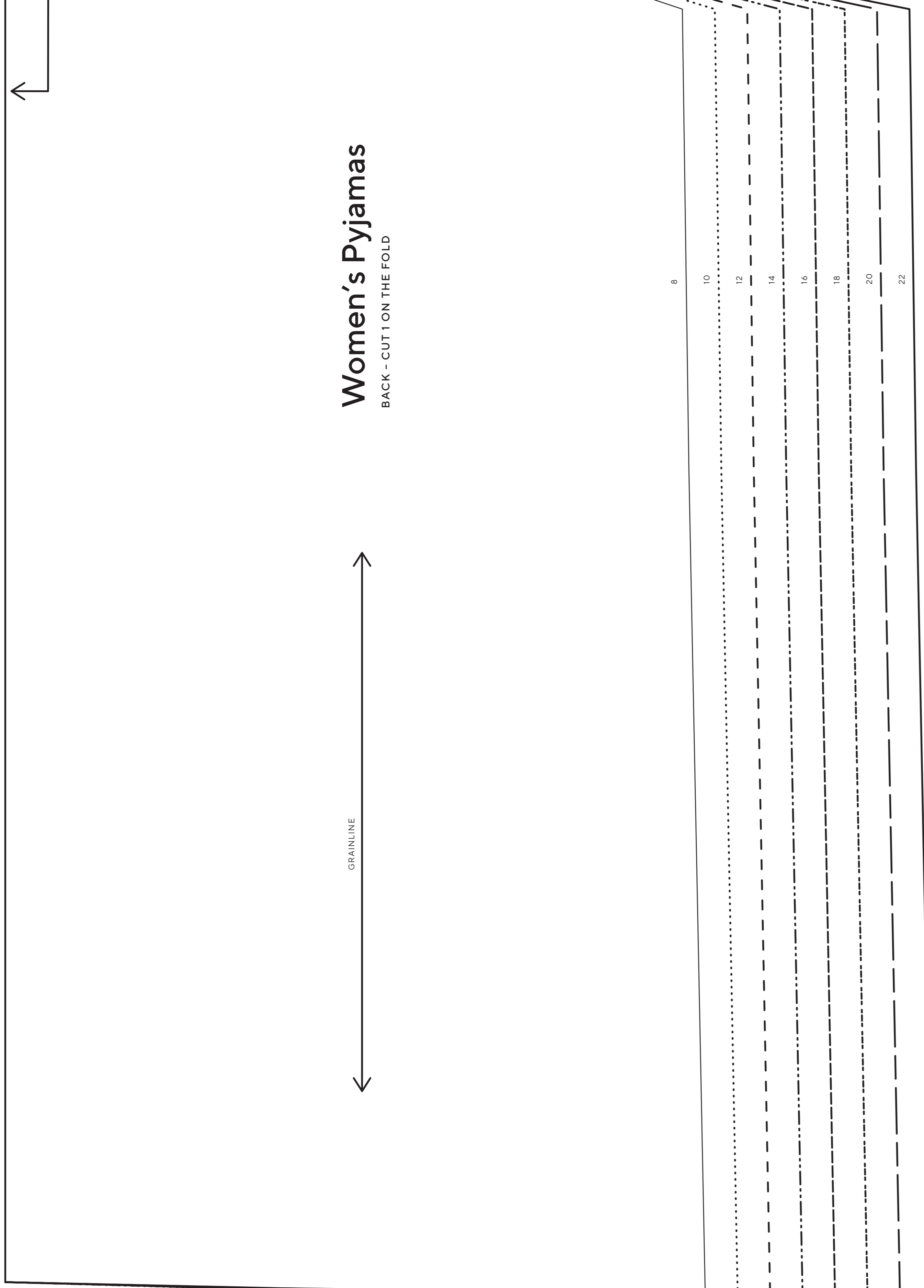
TOP COLLAR - CUT 1 IN FABRIC
+ 1 IN INTERFACING

CENTRE BACK



Women's Pyjamas

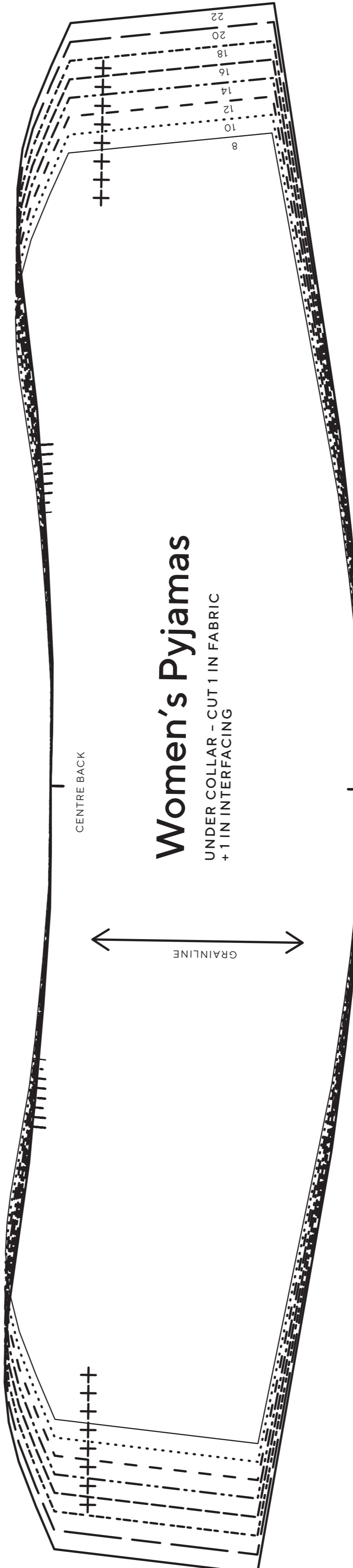
BACK - CUT 1 ON THE FOLD



Women's Pyjamas

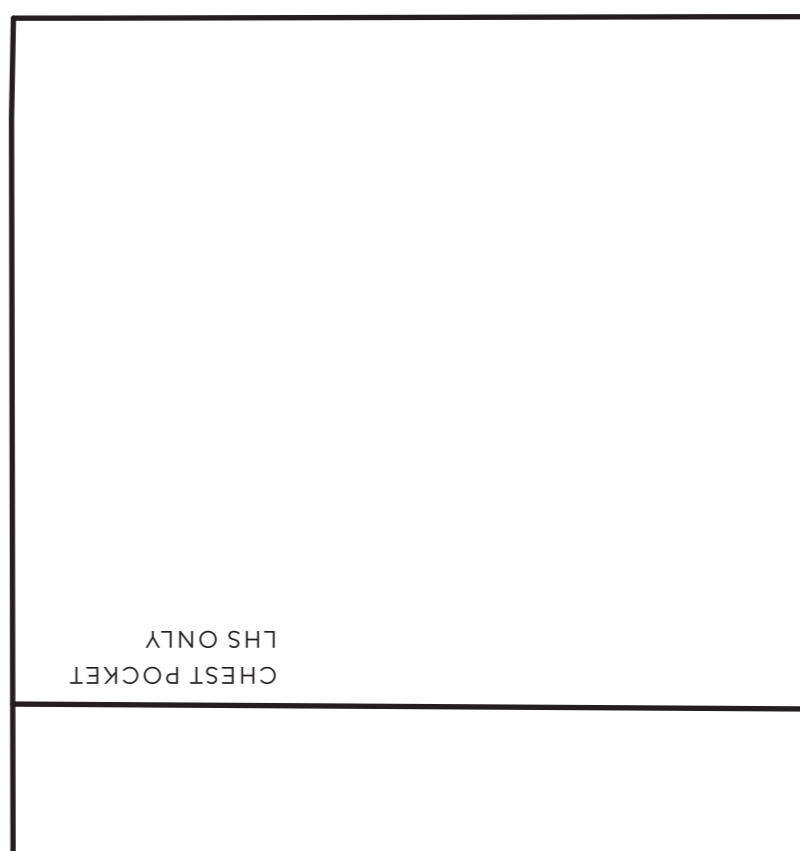
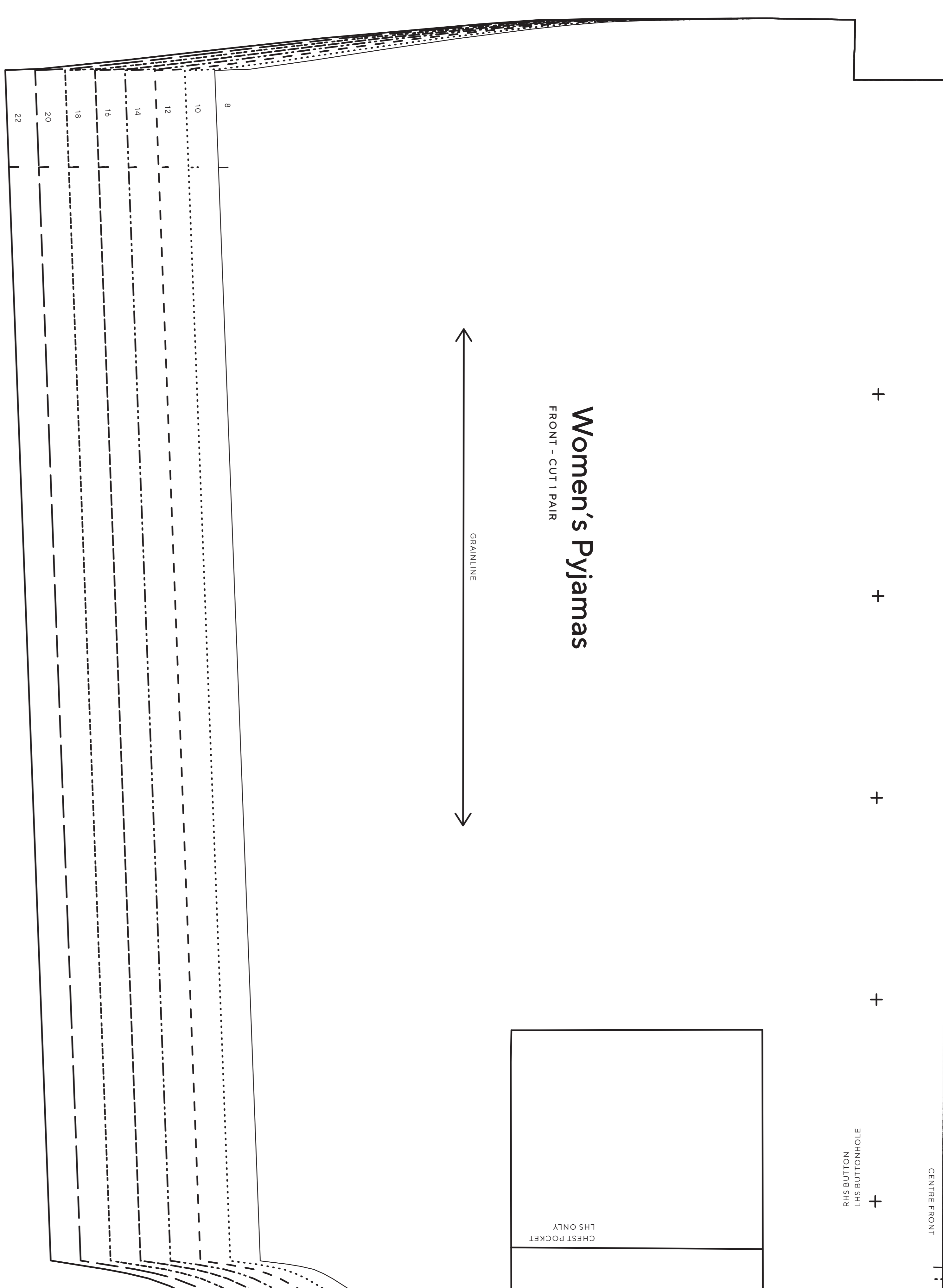
UNDER COLLAR - CUT 1 IN FABRIC
+ 1 IN INTERFACING

CENTRE BACK



Women's Pyjamas

FRONT - CUT 1 PAIR



RIGHT BUTTON
LHS BUTTONHOLE

CENTRE FRONT





Women's Pyjamas (2 of 3)

PROJECT DESIGN © LOVE PRODUCTIONS 2022
THIS DESIGN IS PROTECTED BY COPYRIGHT
AND MUST NOT BE MADE FOR RESALE.

DESIGN BY: ESTHER WOODHEAD @WOODHEADS

1.5 CM (5/8 IN.) SEAM ALLOWANCE INCLUDED (UNLESS OTHERWISE STATED)

Women's Pyjamas
ELASTIC TEMPLATE - DO NOT CUT

Women's Pyjamas
FRONT FACING - CUT 1 PAIR IN FABRIC
+ 1 PAIR IN INTERFACING

GRAINLINE

BAG OUT

BASE 0.5CM

Women's Pyjamas
FRONT TROUSER - CUT 1 PAIR

GRAINLINE

8

10

12

14

16

18

20

22

22
20
18
16
14
12
10
8

22
20
18
16
14
12
10
8



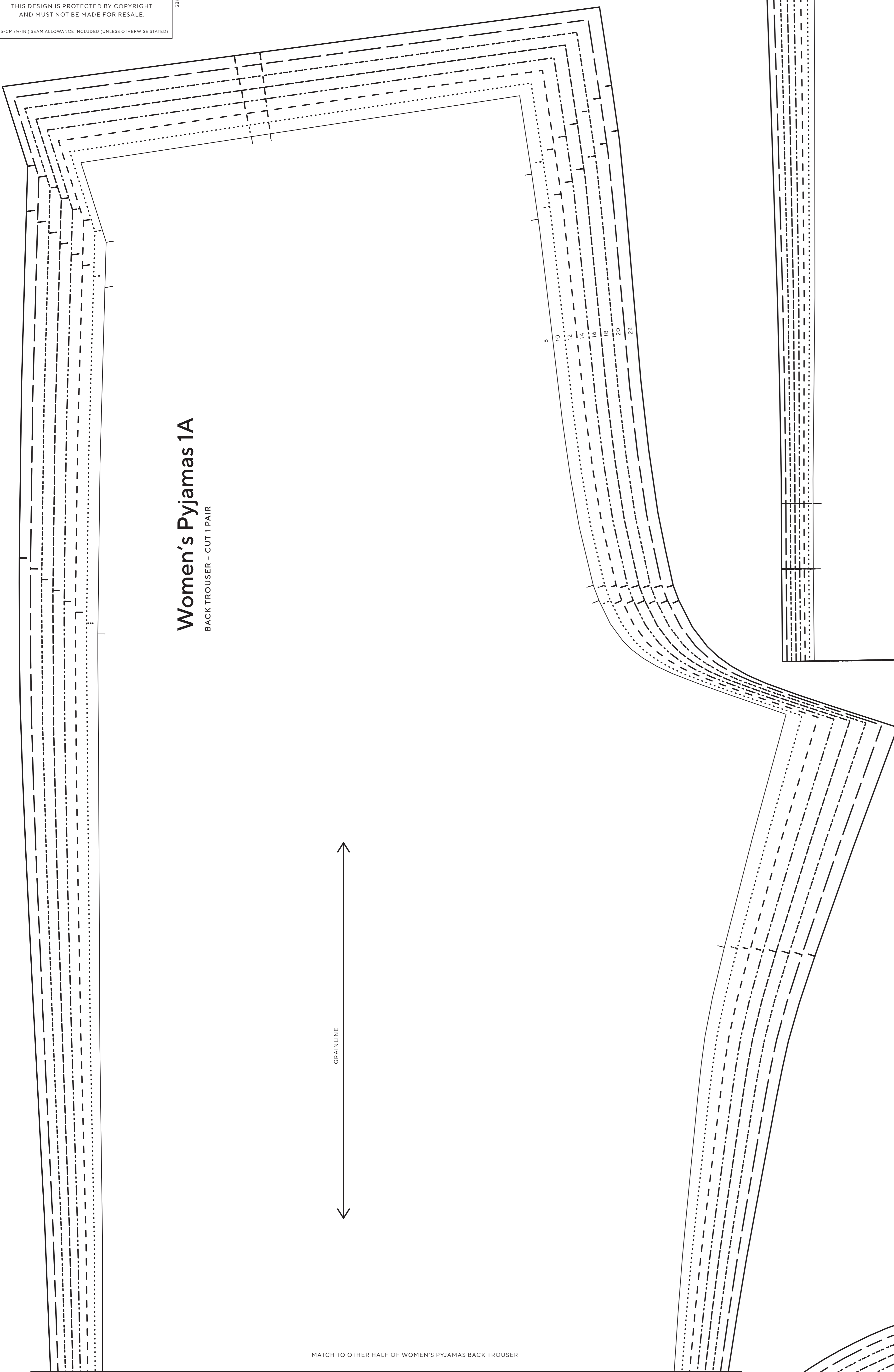
Women's Pyjamas (3 of 3)

PROJECT DESIGN © LOVE PRODUCTIONS 2022
THIS DESIGN IS PROTECTED BY COPYRIGHT
AND MUST NOT BE MADE FOR RESALE.

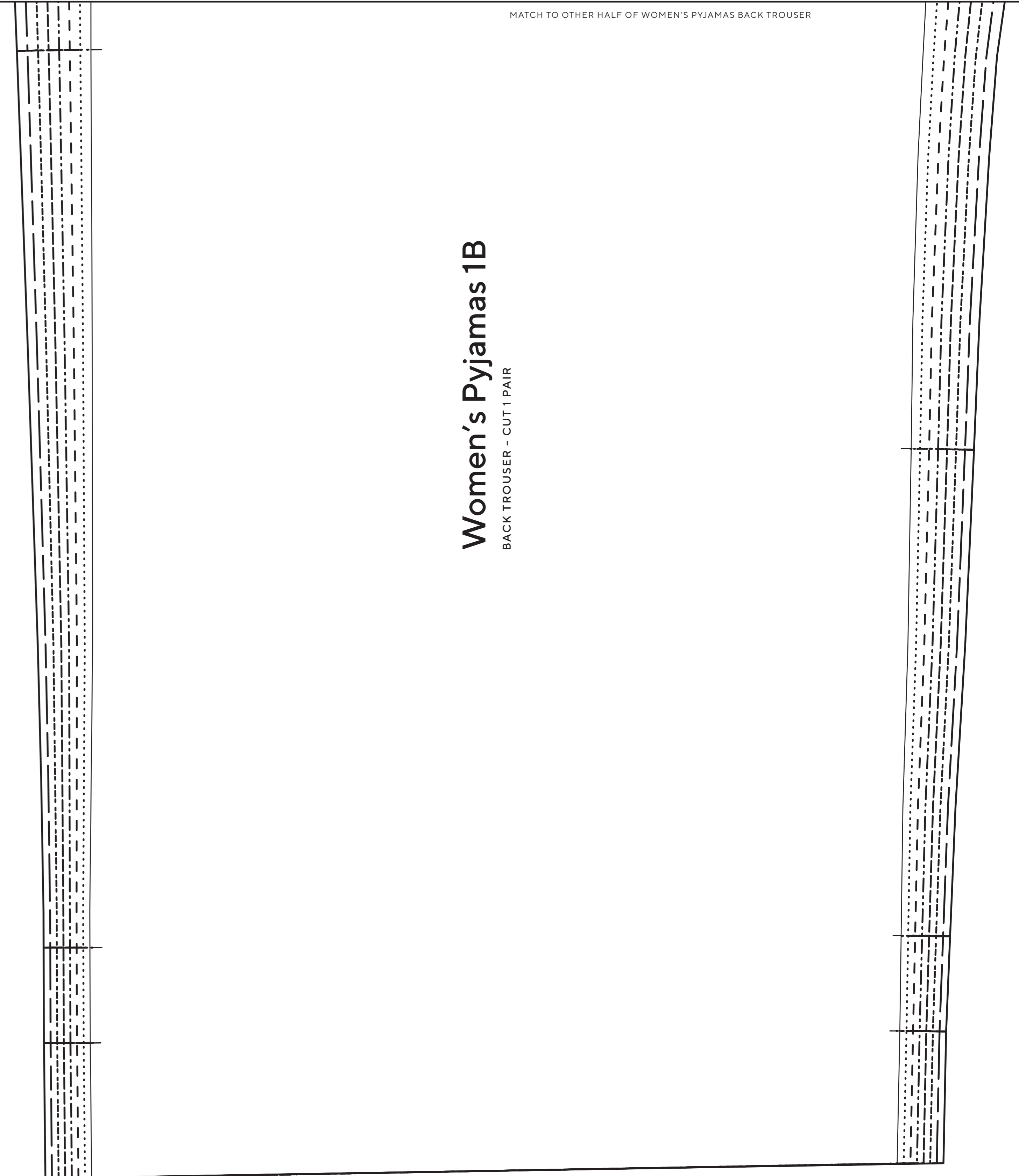
DESIGN BY STONY FROST (2022) 3849024331

1.5 CM (5/16") SEAM ALLOWANCE INCLUDED (UNLESS OTHERWISE STATED)

Women's Pyjamas 1A
BACK TROUSER - CUT 1 PAIR



Women's Pyjamas 1B
BACK TROUSER - CUT 1 PAIR



Women's Pyjamas
SLEEVE - CUT 1 PAIR

