



## Ra-Ra Skirt

PROJECT DESIGN © LOVE PRODUCTIONS 2022  
THIS DESIGN IS PROTECTED BY COPYRIGHT  
AND MUST NOT BE MADE FOR RESALE.

1.5-CM (5/16-IN.) SEAM ALLOWANCE INCLUDED (UNLESS OTHERWISE STATED)

TEST SQUARE: 10CM x 10CM / 4 INCHES x 4 INCHES

CENTRE BACK

ZIP

1A

### SIZING KEY

—————	8
.....	10
- - - - -	12
- . - . -	14
- - - - -	16
- . - . -	18
— — — — —	20
—————	22

1B



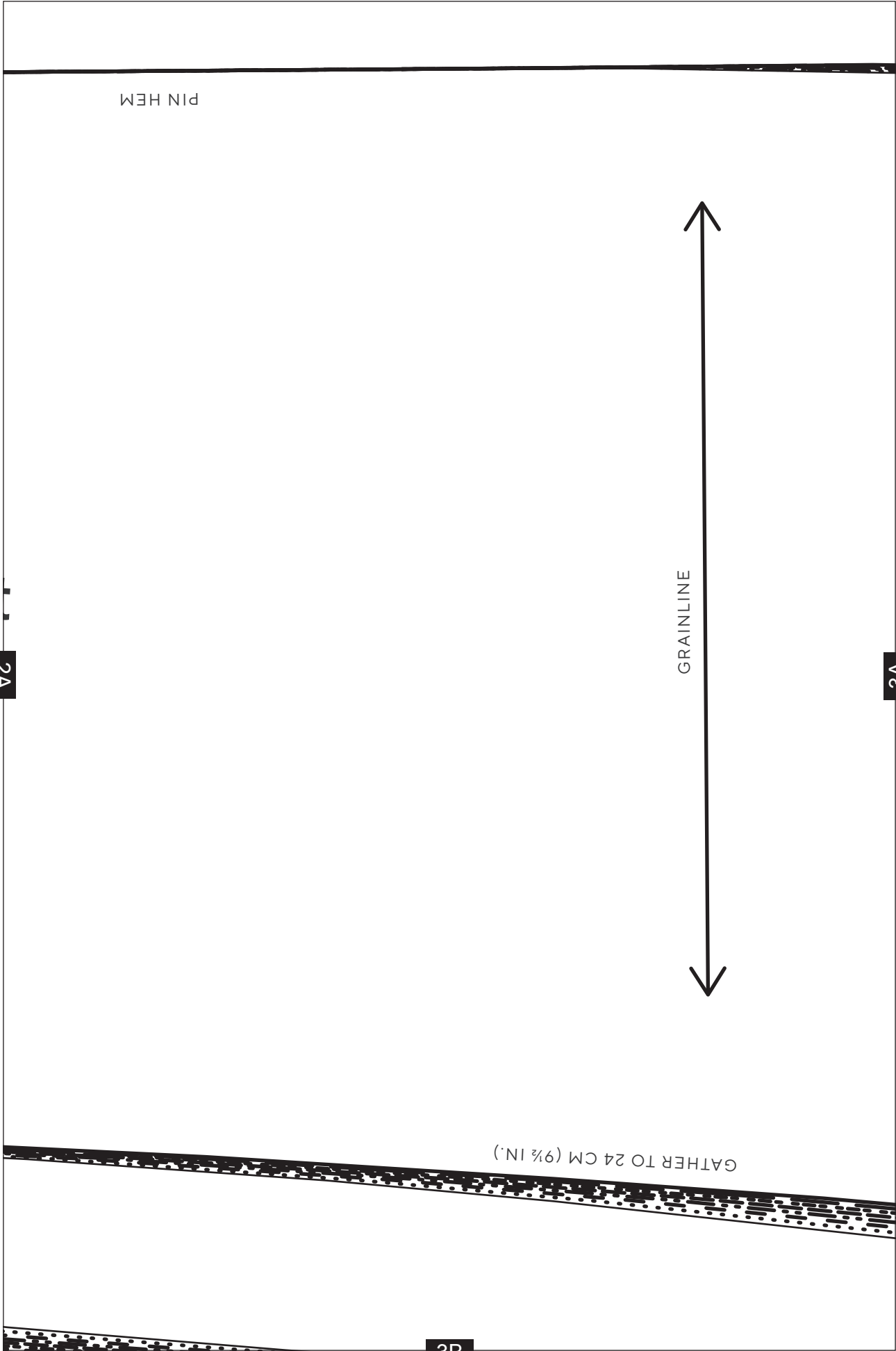
# Ra-Ra Skirt

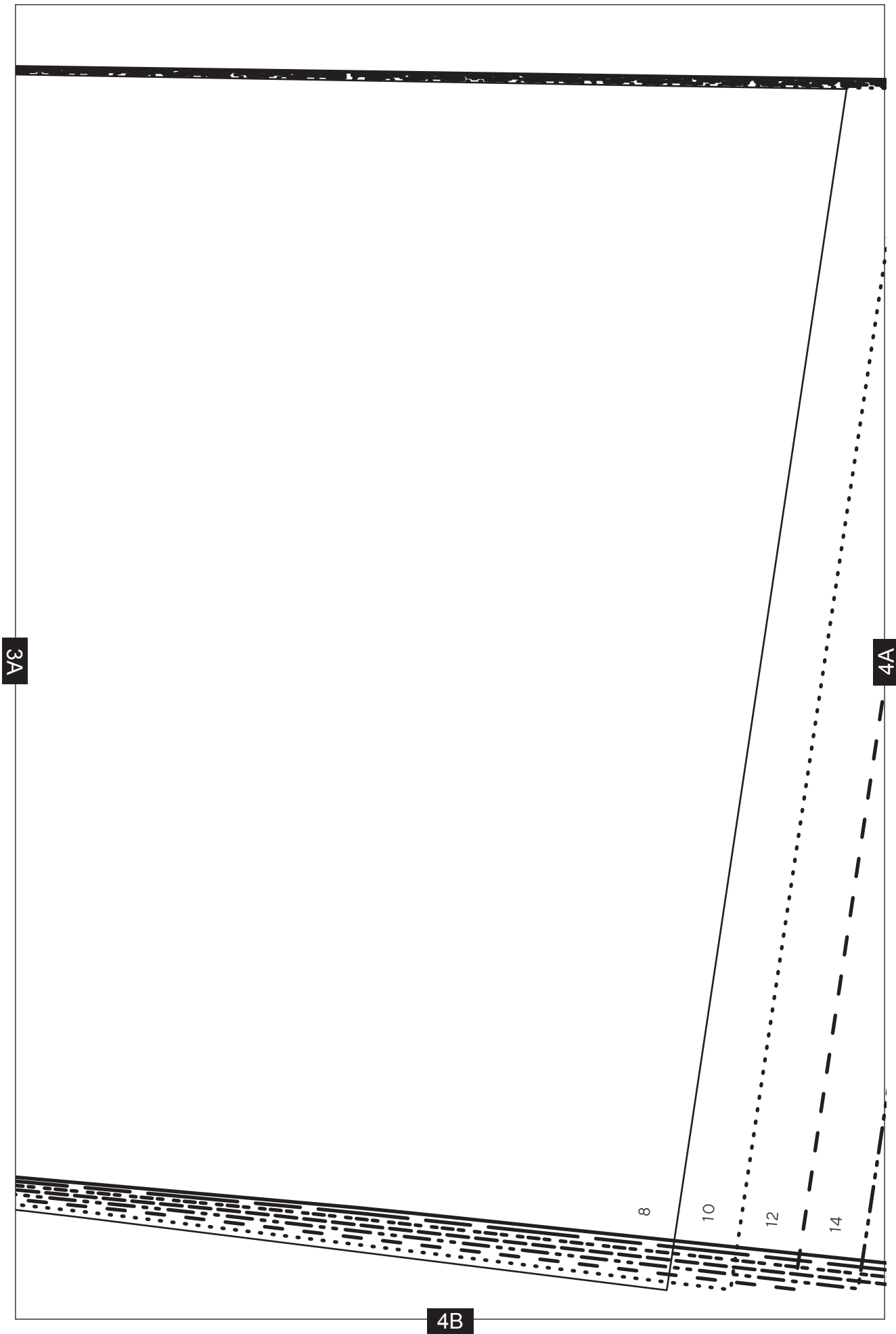
BACK FRILL 1 - CUT 1 PAIR

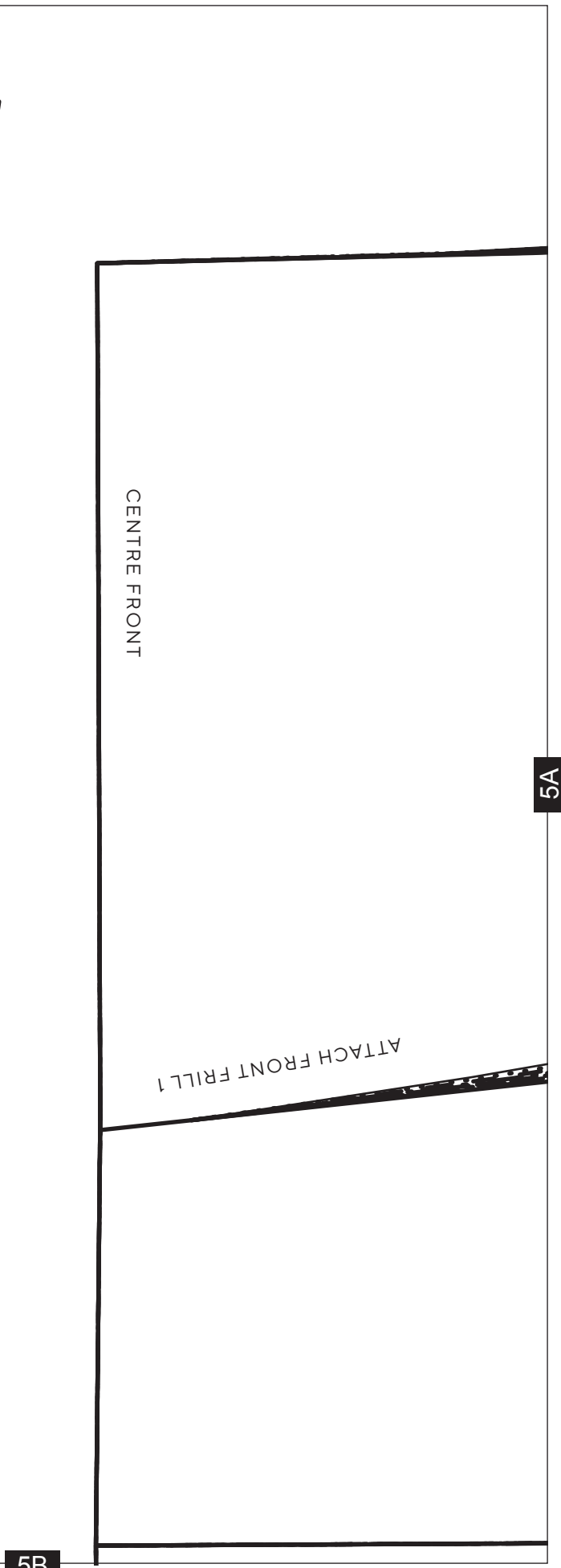
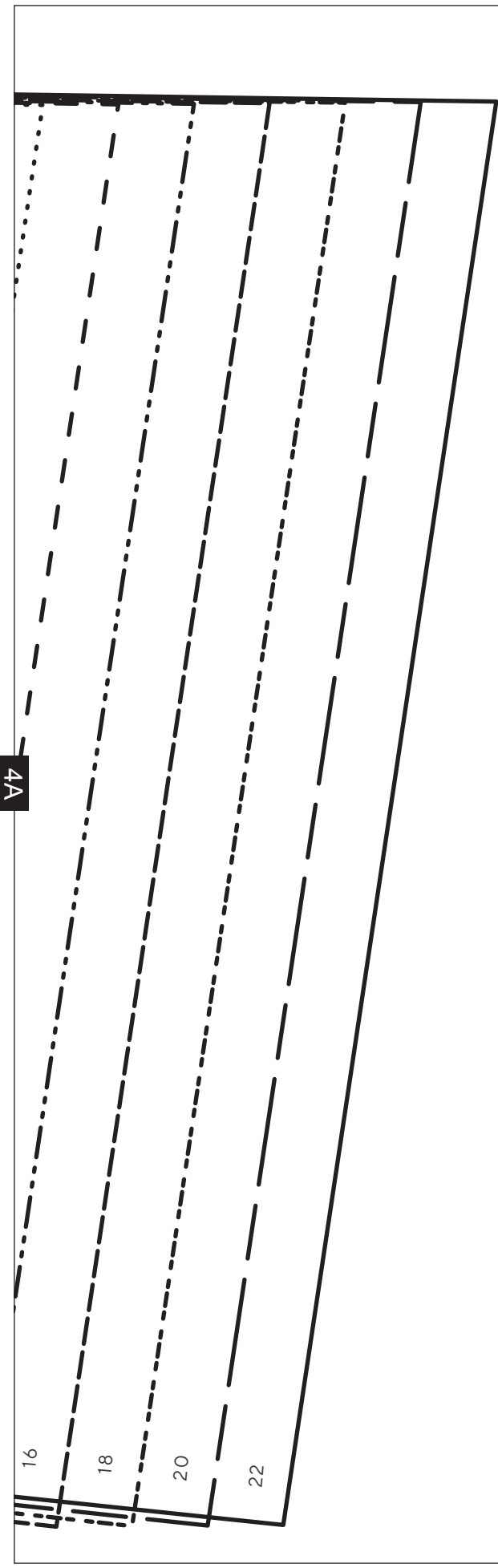
1A

2A

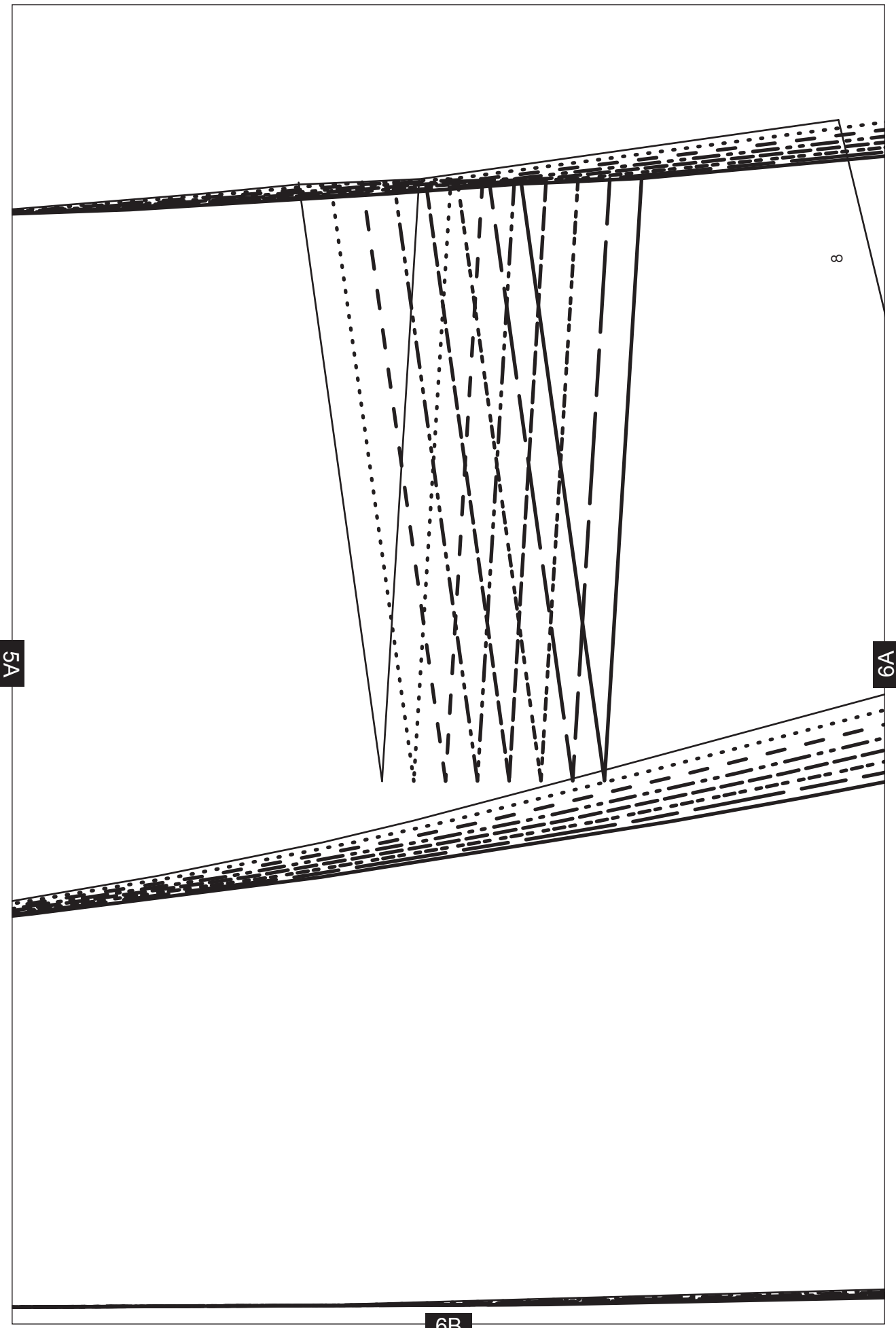
2B







5B

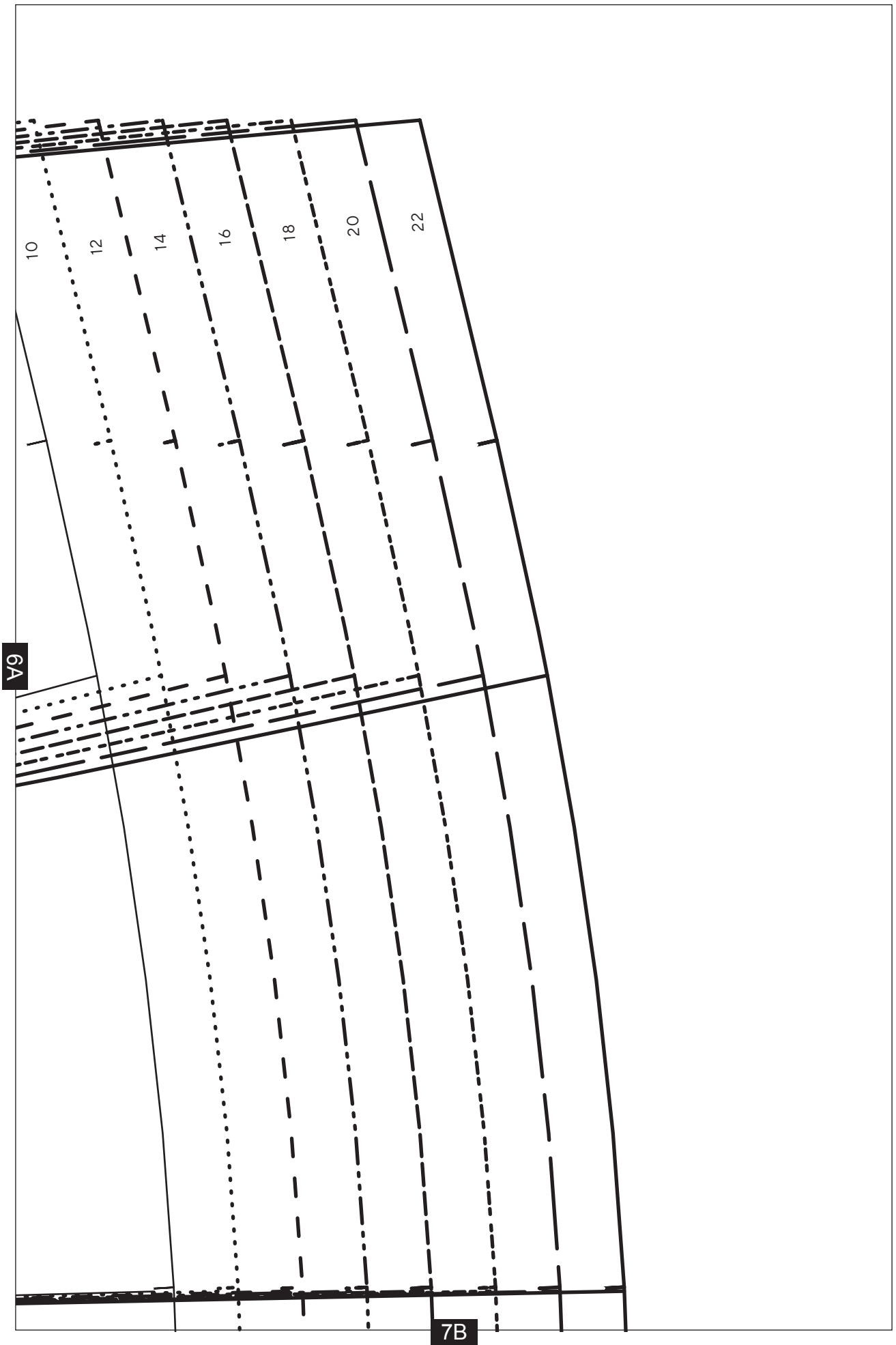


5A

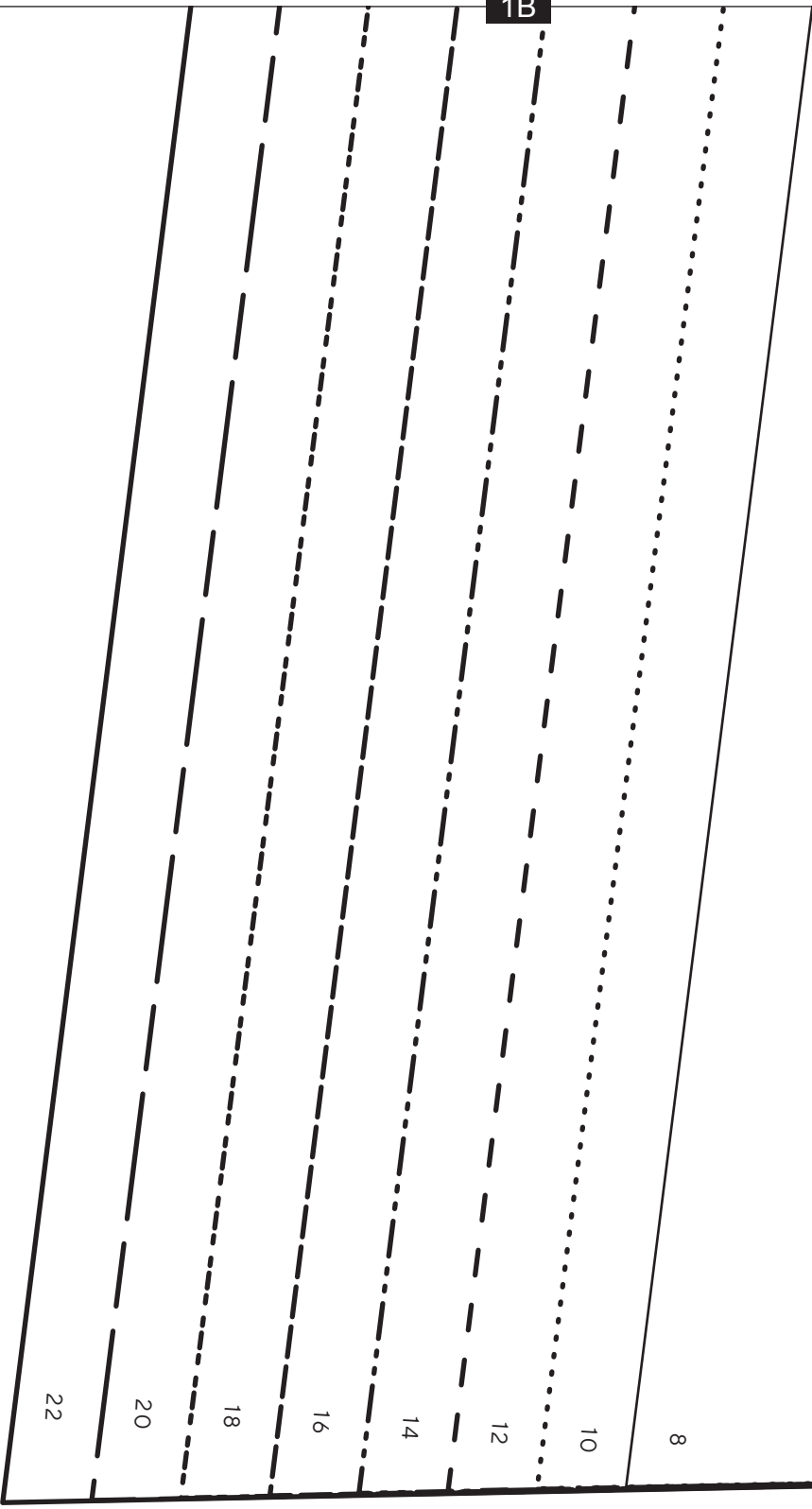
6A

6B

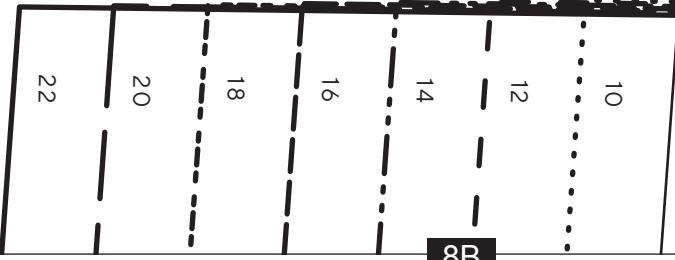
8



1B



8B





2B

# Ra-Ra Skirt

FRONT FRILL 1 - CUT 1 ON THE FOLD

8A

9A

9B

3B

GATHER TO 25 CM



GRAINLINE

9A

10A

GATHER TO 26 CM (10¼ IN.)

10B

4B

CENTRE FRONT

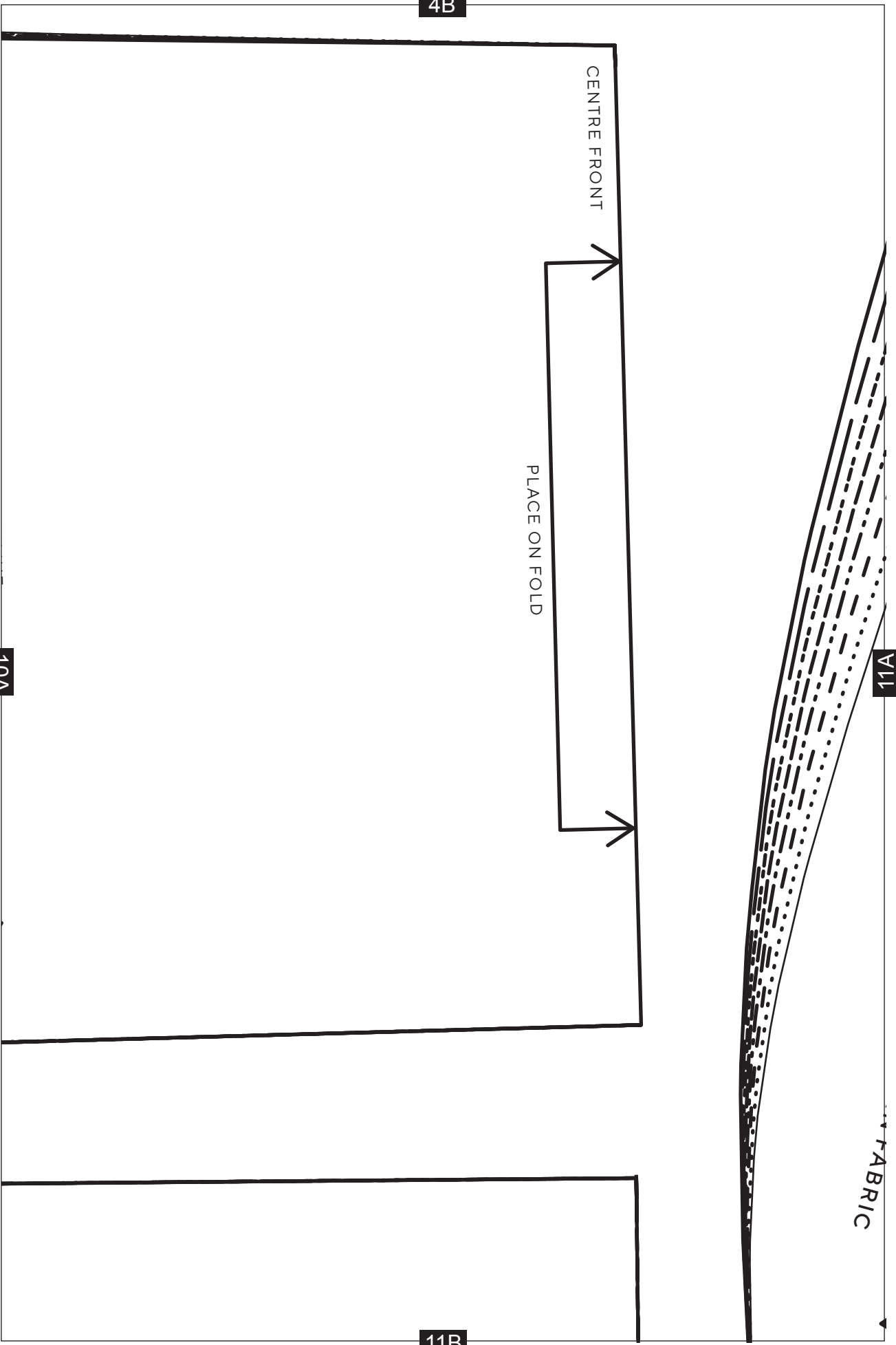
PLACE ON FOLD

10A

11A

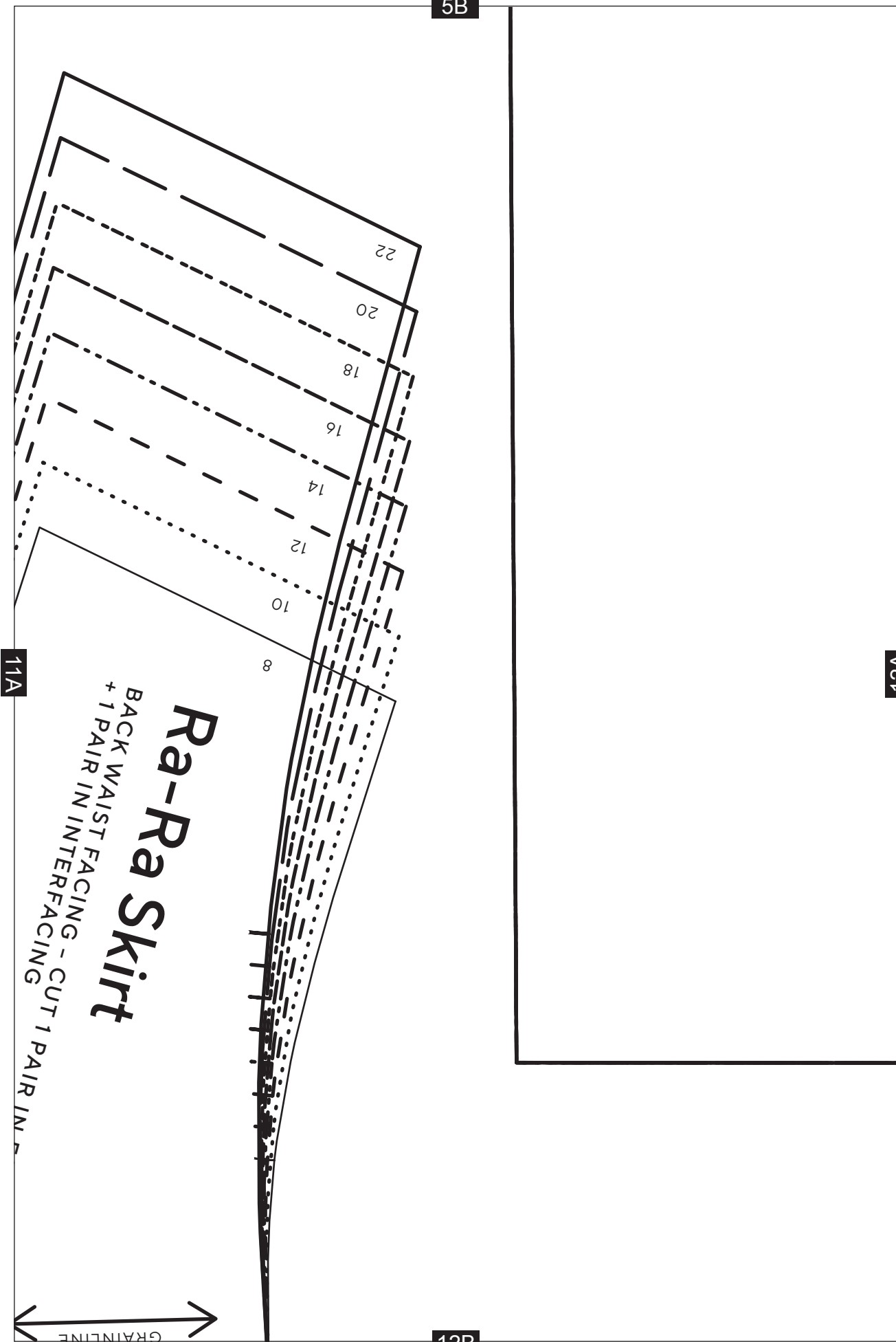
FABRIC

11B



5B

12A



11A

**Ra-Ra Skirt**  
 BACK WAIST FACING - CUT 1 PAIR IN INTERFACING  
 + 1 PAIR IN INTERFACING

12B

GRAINLINE

6B

ATTACH FRONT FRILL 2

# Ra-Ra Skirt

FRONT SKIRT - CUT 1 PAIR



GRAINLINE

PIN HEM

12A

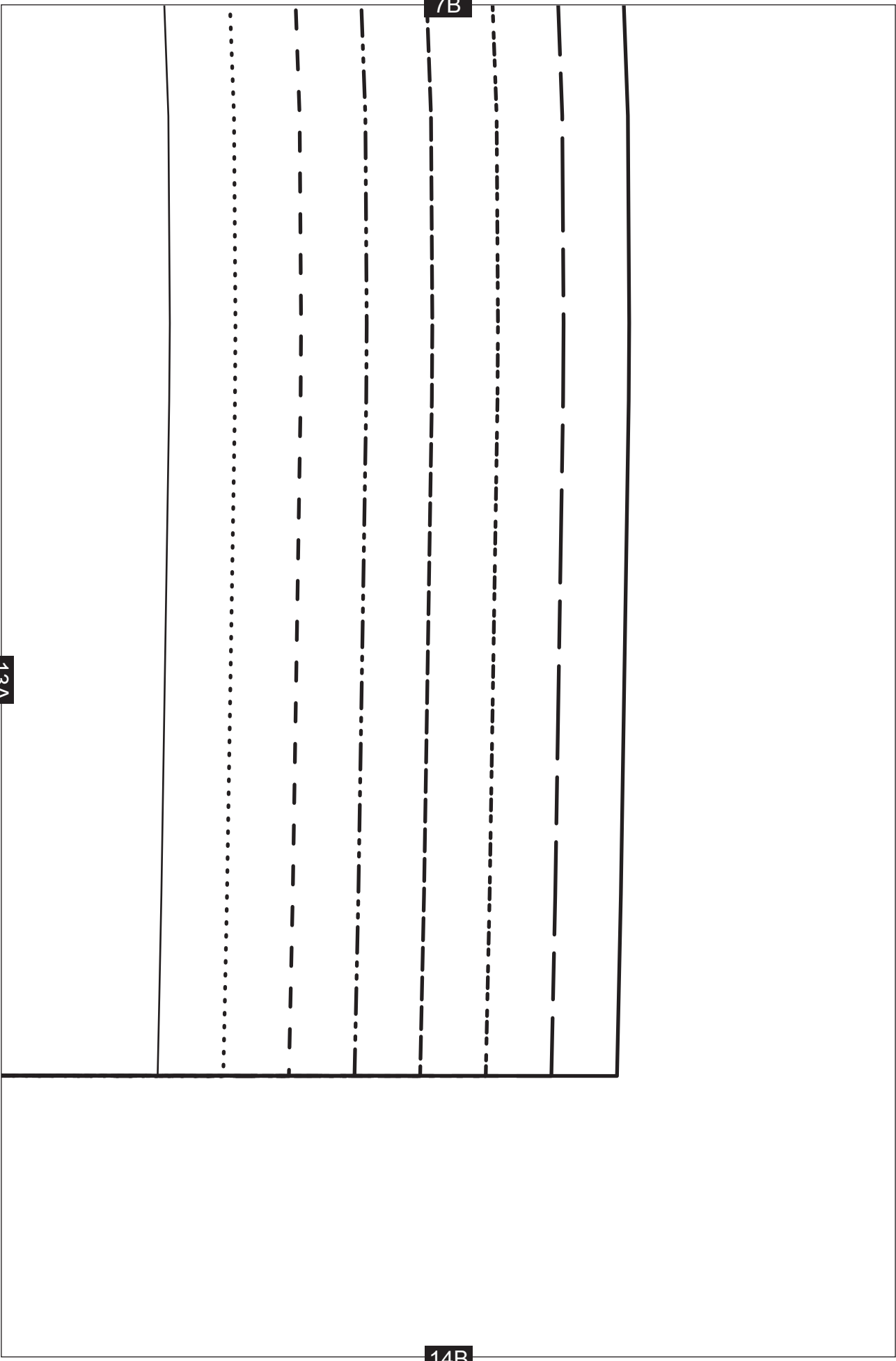
13A

13B

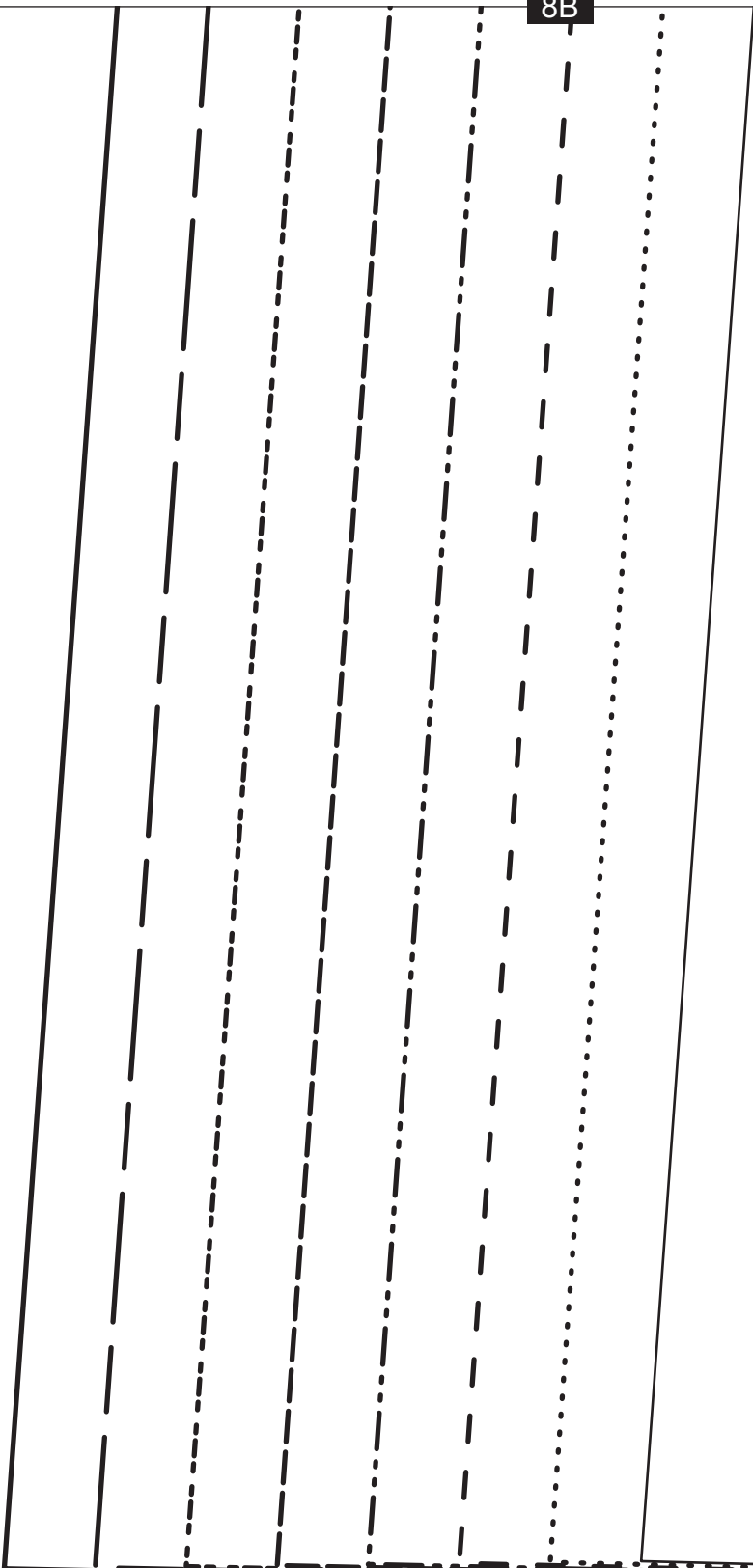
13A

7B

14B



8B



15A

8

10

12

14

16

18

20

22

15B



9B

# Ra-Ra Skirt

BACK FRILL 2 - CUT 1 ON THE FOLD

15A

16A

16B



10B



GRAINLINE



16A

17A

PIN HEM

17B

11B

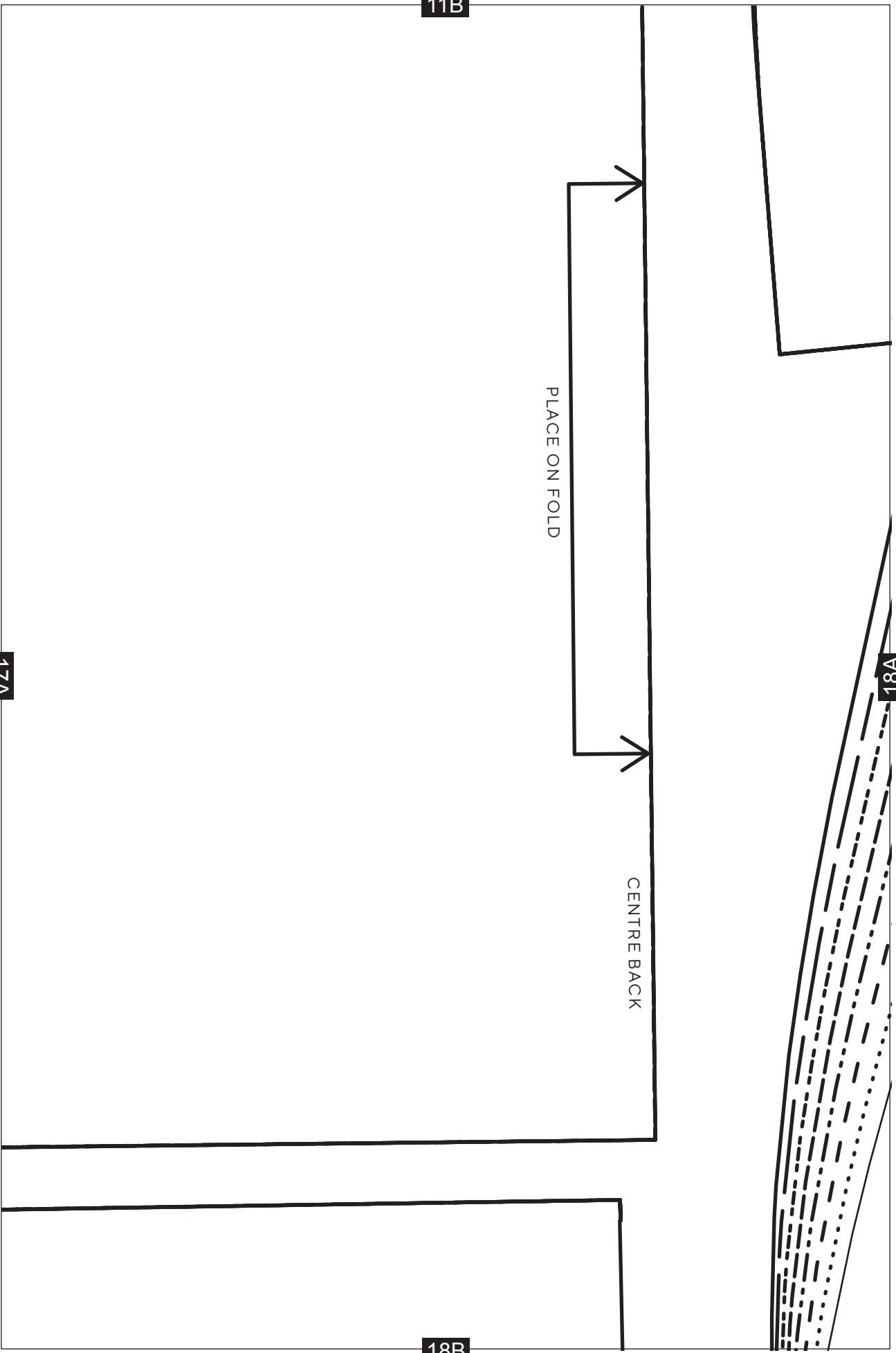
PLACE ON FOLD

CENTRE BACK

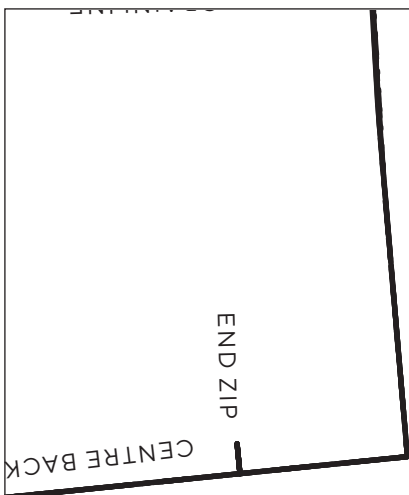
18A

18B

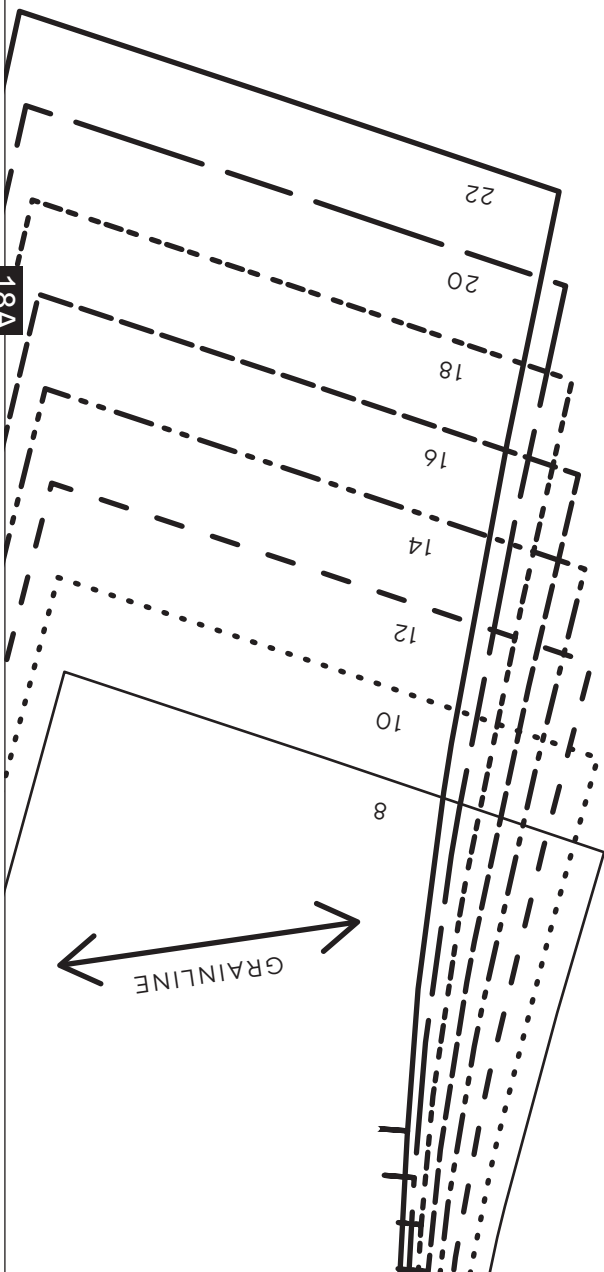
17A



12B



18A

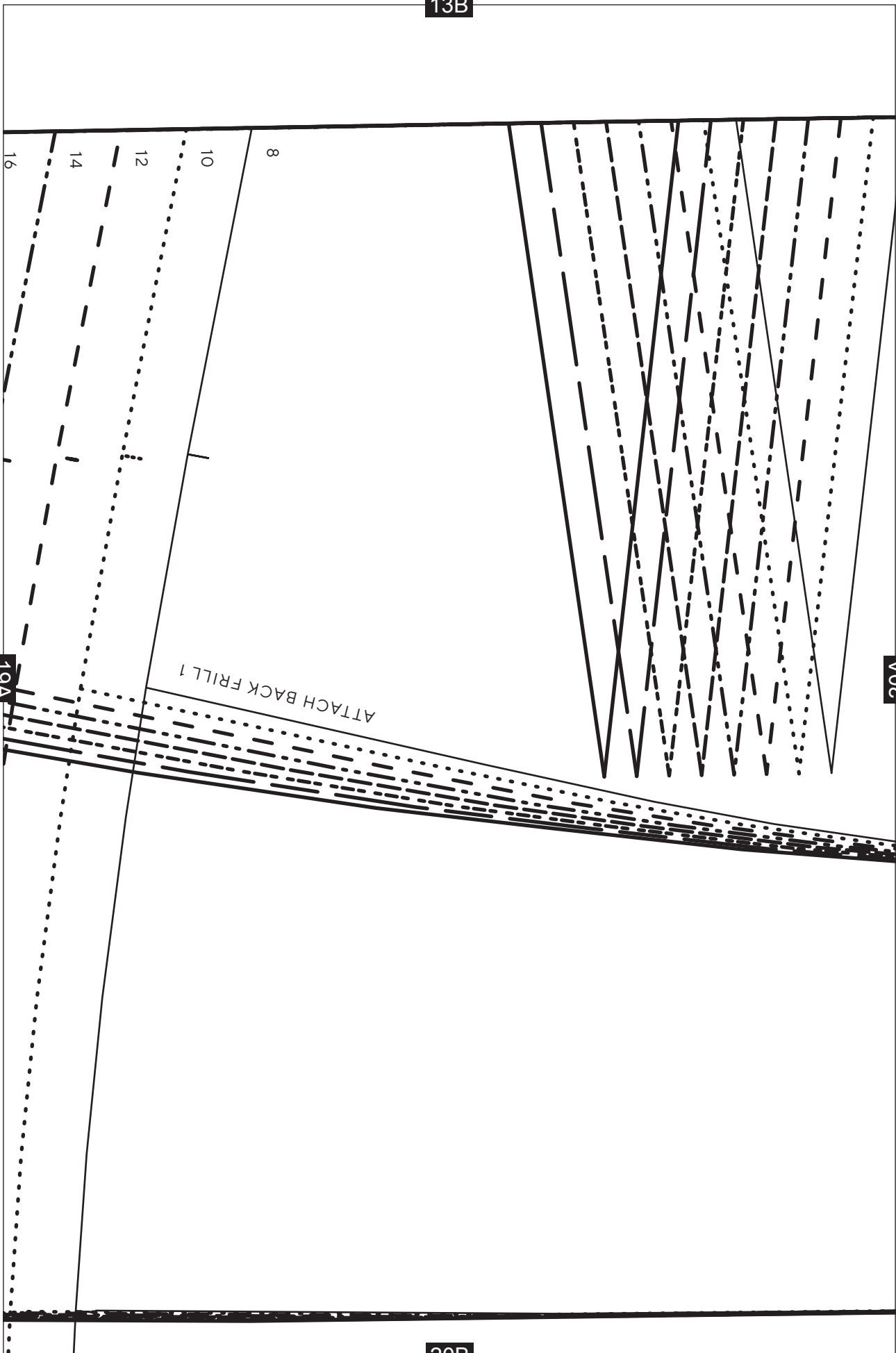


19B



19A

13B



14B

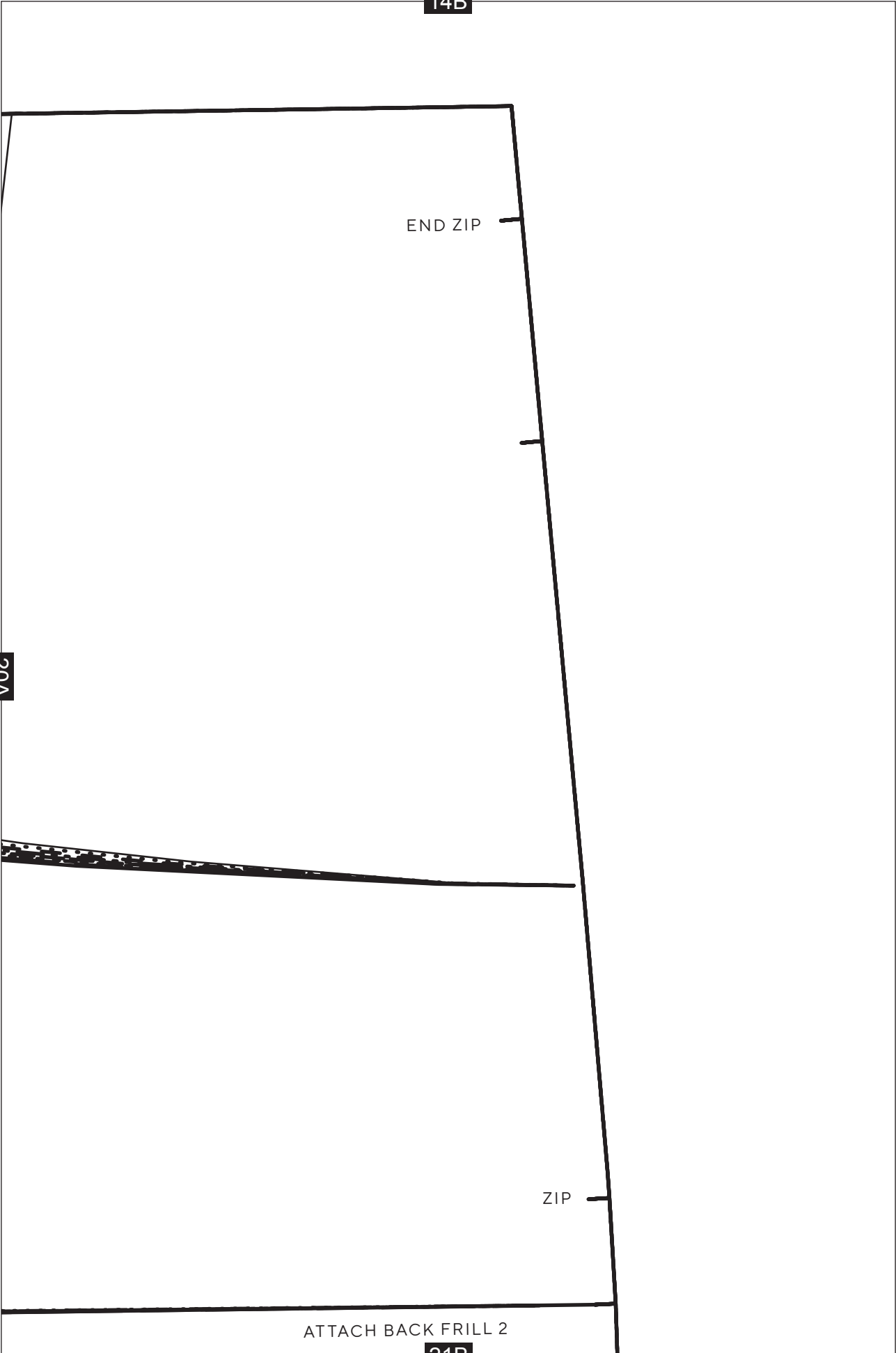
END ZIP

20A

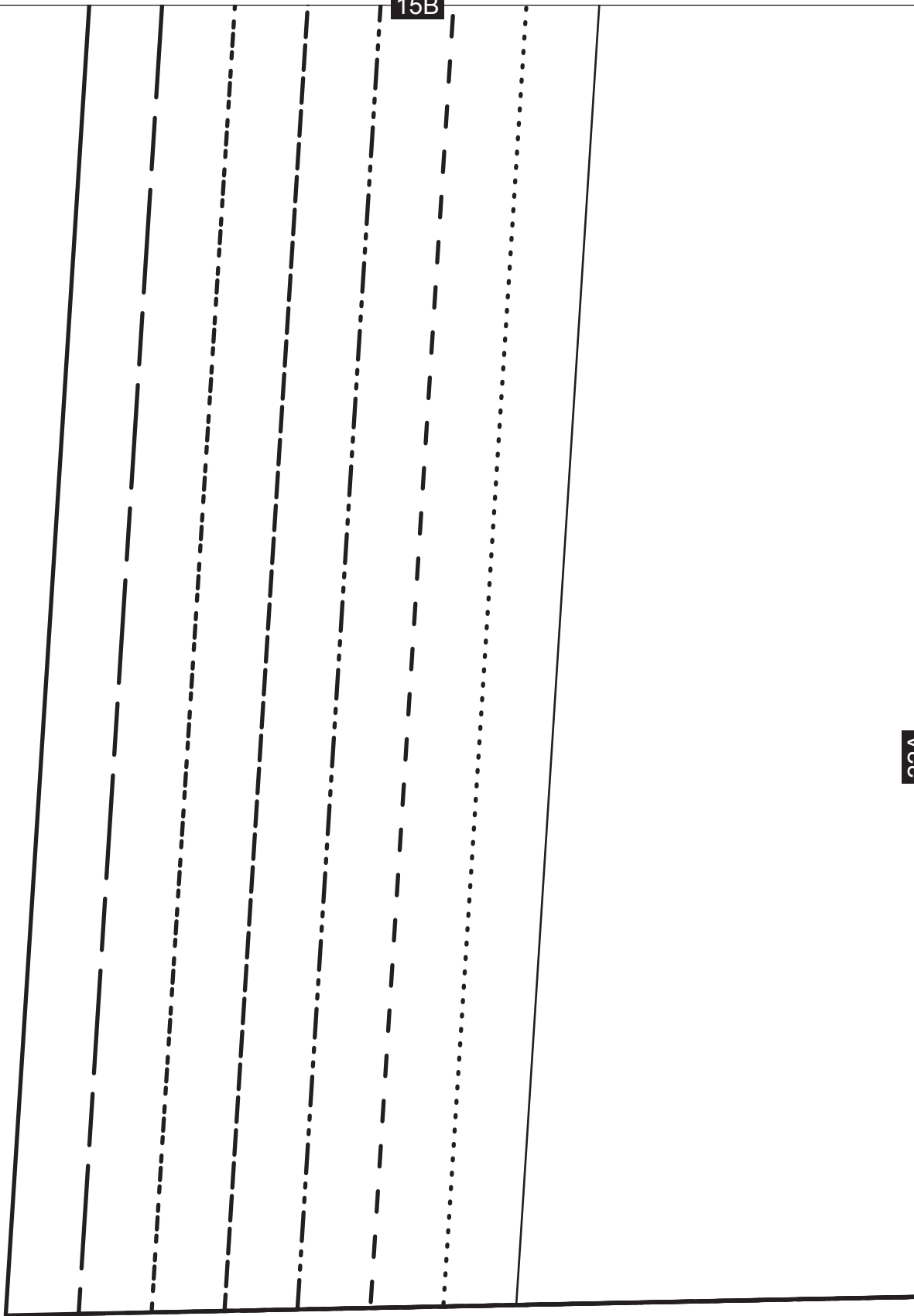
ZIP

ATTACH BACK FRILL 2

21B



15B



22A

16B



GRAINLINE

22A

23A

17B

# Ra-Ra Skirt

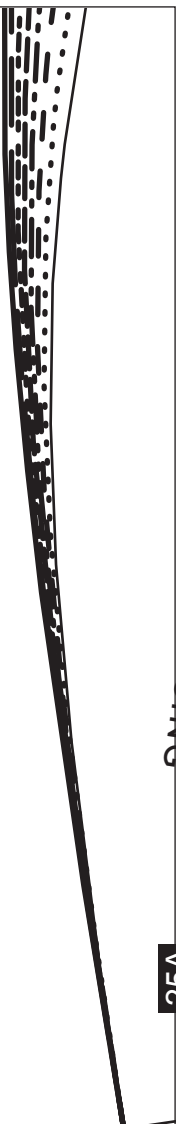
FRONT FRILL 2 - CUT 1 ON THE FOLD

23A

24A

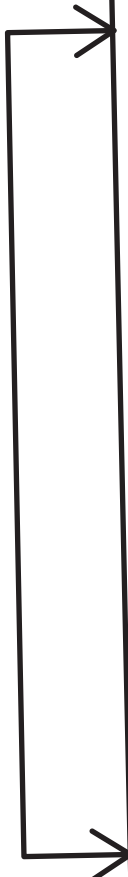


18B



24A

25A



PLACE ON FOLD

CENTRE FRONT

24A

19B

# Ra-Ra Skirt

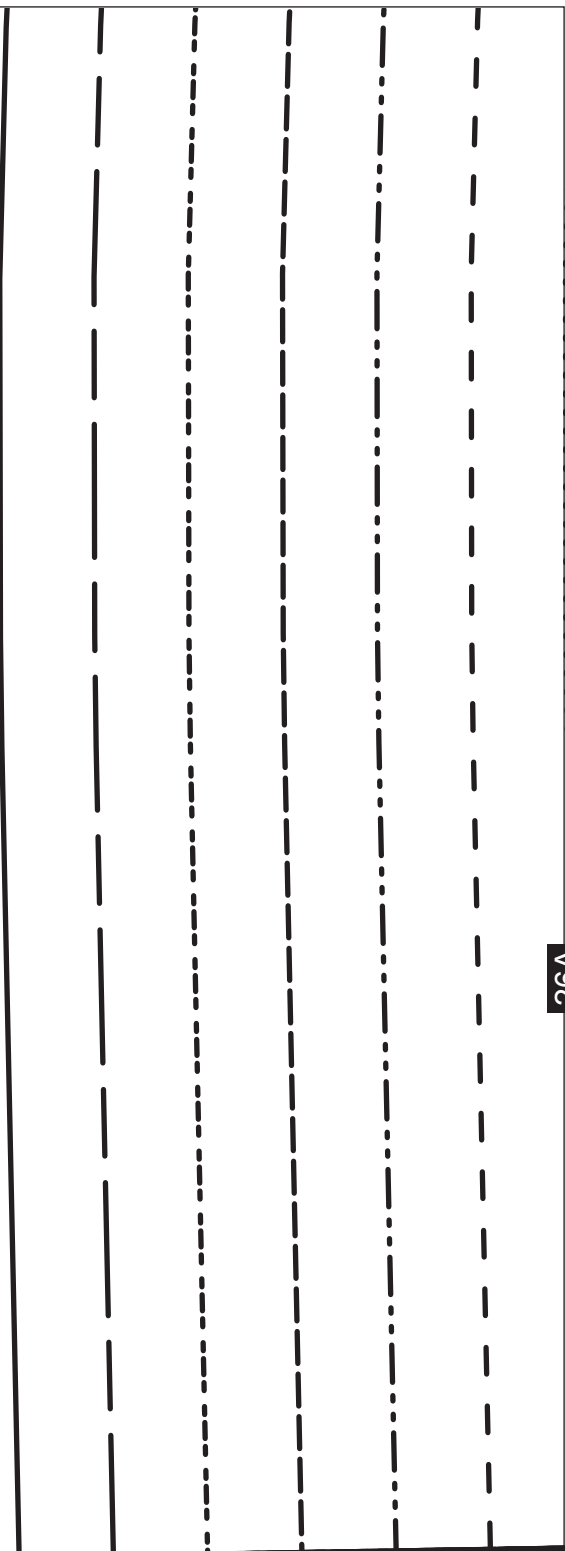
FRONT WAIST FACING -  
CUT 1 ON THE FOLD IN FABRIC  
+ 1 ON THE FOLD IN INTERFACING

PLACE ON FOLD

CENTRE FRONT

25A

26A



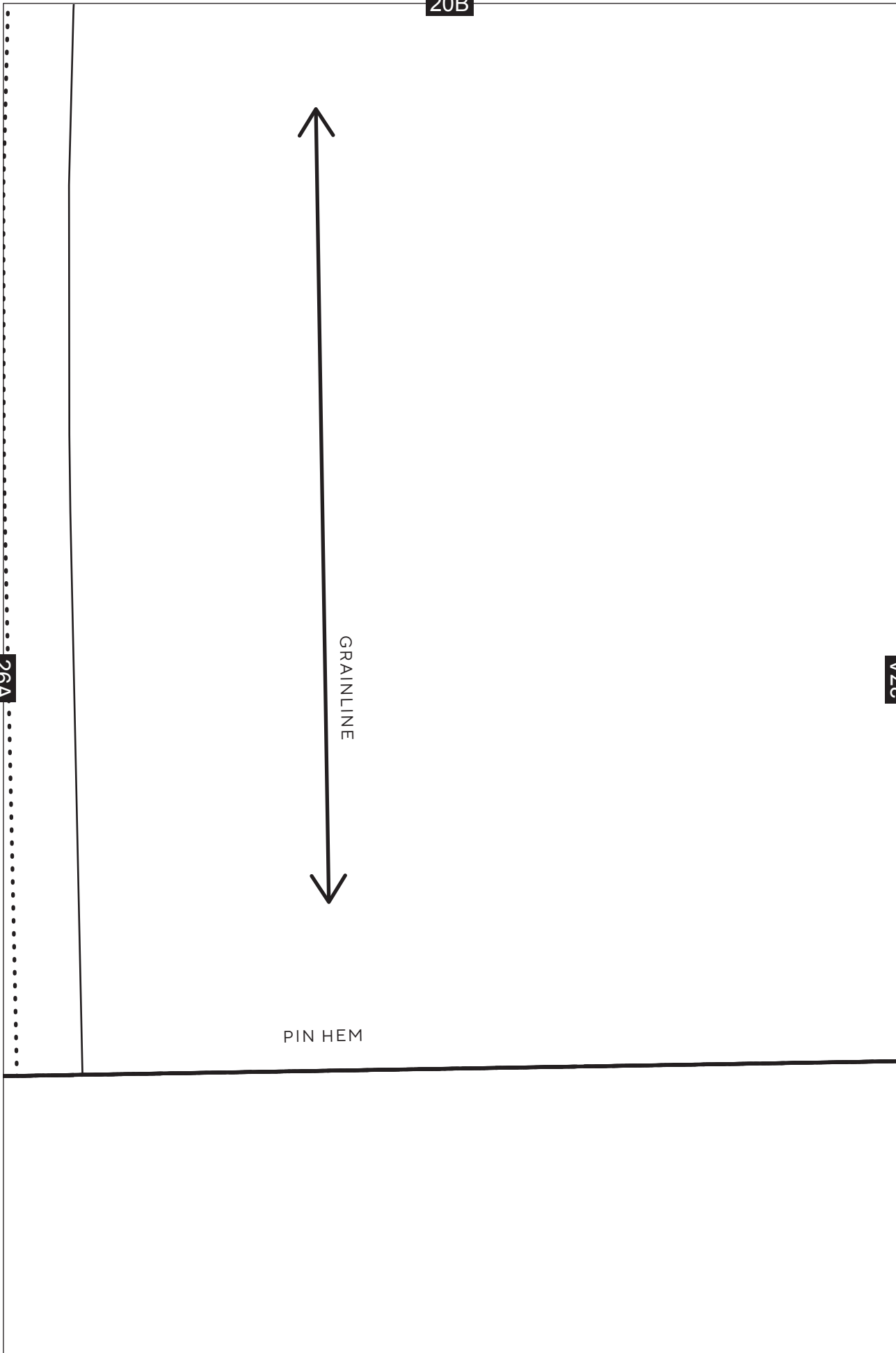
20B

26A

27A

GRAINLINE

PIN HEM



21B

CENTRE BACK

# Ra-Ra Skirt

BACK SKIRT - CUT 1 PAIR

27A